

# Tool Demo

# Dreamweaver Basics

IT 592

Spring 2008

Gina Mason

# Dreamweaver Hell

When I first got the program, I was excited to dig in and begin.

CS3 was expensive but worth it to me so I wouldn't have to drive to Edwardsville. But little did I know, there were going to be some major hurdles to overcome!

- Installation was super tricky! Firewalls, IM programs, yikes!
- Figuring out how to make page #1 was next to impossible
- Buying books was easy (\$100 on Amazon.com) Reading these books was pretty easy too. But interpreting and putting them into action steps was still boggling my brain.
- <http://gina1012.blogspot.com/> tells my web design journey
- [www.thesitewizard.com](http://www.thesitewizard.com) saved my sanity!!! It had a terrific step by step site building instructions that got me going. Finally!

# Purpose

So... my goal with this tool demo is to:

- Explain one feature of Dreamweaver that I've mastered this semester
- Explain some of the options related to that feature
- Explain how to troubleshoot the feature

# Links

- Links are one of the most basic functionalities on a web page.
- There are several types
  - Links to pages and places within your site
  - Links to pages and places outside your site
  - Links to email
  - Broken links (links that don't work)

# Create Whole Site First

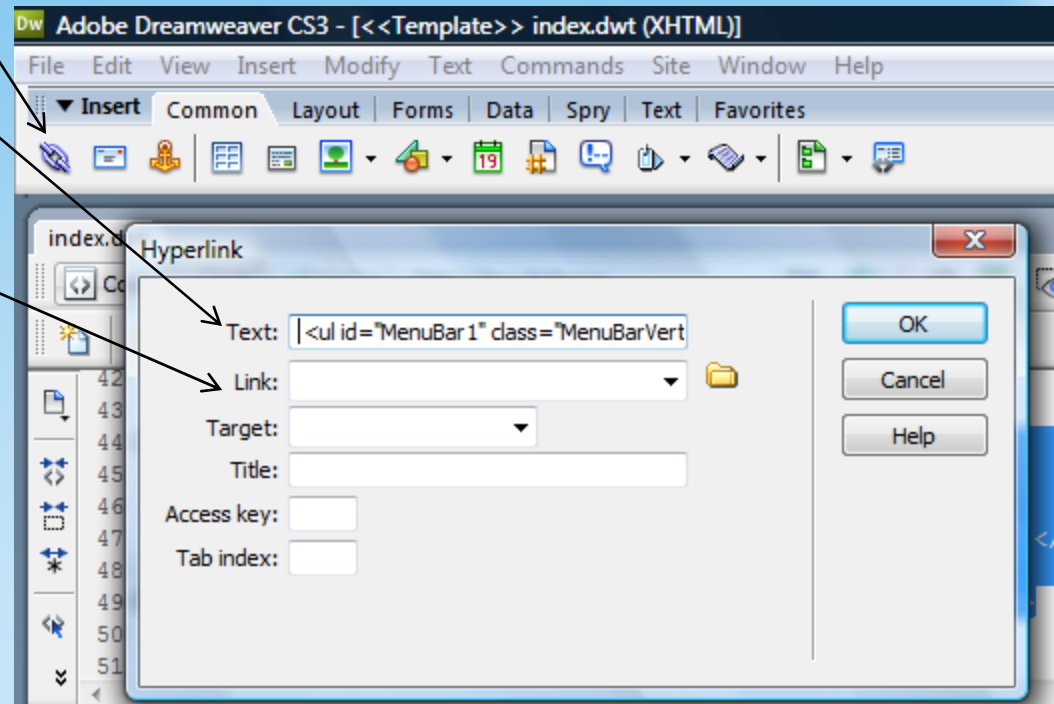
- [Home](#)
- [Resume](#)
- [Current Projects](#)
- [Portfolio](#)
- [Respiratory Care](#)

- If you know you are going to have multiple pages that are linked from the index navigation bar, go ahead and create all of the pages in the beginning stages of the design.
- That way, all of your links on the navigation bar will work from the start and you minimize the chance of broken links!

# Basic Linking :

Click and transport the user to another place within your site.

- Click on “Link” Icon
- Enter text for wording of link
- Fill out box with target URL or site location
- Click OK



# Anchors: links to places on a long page

File Edit View Insert Modify Text Commands Site Window Help

Insert Common Layout Forms Data Spry Text Favorites

technology.html Code Split Design Title: Untitled Document

```
51 <br />
52 </strong><a name="Facilites" id="Facilites"></a><span class="style6">Facilities</span>
53 <ul class="style1">
54 <li>Adaptive Tech Lab</li>
55 <li>IT Lab</li>
56 <li>Academic Computing</li>
```

0 50 100 150 200 250 300 350 400 450 500 550 600 650

**Technology Resources**

Facilities  
Staff  
Hardware  
Software Resources  
Curriculum

**Overview**

The School of Education has a variety of technological resources to assist students and faculty.

**Facilities**

Adaptive Tech Lab

<body> <div> <p.style1> <a#Facilites>

**Properties**

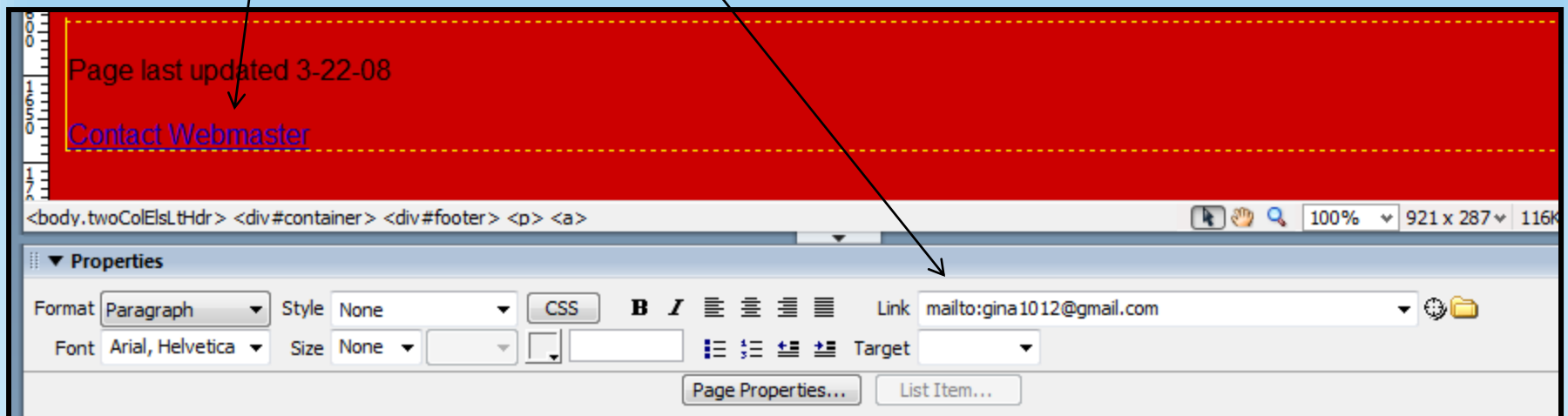
NamedAnchor Name: Facilites Class: style1

1. Put cursor next to the word or image you want to link to
2. Click Anchor Icon
3. Enter a name and click OK
4. Select text to anchor from
5. Click the Link Icon
6. Select the appropriate name for the link

# e-Mail Links:

The user's email program will open with a pre-addressed compose mail screen

- ***Write desired words then highlight***
- ***At the bottom Properties box see "LINK"***
- ***Enter mailto: then the email address***





# External Linking:

Click and the user will be transported to a place in a site other than your own

- Highlight picture or words to use as link
- Enter link information in box



The screenshot shows a web editor interface with a blue background. A circular logo for the "ILLINOIS SOCIETY FOR RESPIRATORY CARE" is highlighted with a blue border. The logo contains the text "Caring", "ISRC", and "Dedication". Below the logo, the text "Illinois Society for Respiratory Care - network of professionals" and the URL "www.isrc.org" are visible. A black arrow points from the highlighted logo to the "Link" field in the "Properties" panel at the bottom. The "Properties" panel shows the "Link" field set to "http://www.isrc.org/" and the "Target" field set to "\_blank". The "Format" dropdown is set to "Paragraph" and the "Style" dropdown is set to "twoColLiqtHdr". The "Font" is set to "Verdana, Arial" and the "Size" is set to "100 %". The "Color" field is set to "#000000". The "Page Properties..." and "List Item..." buttons are also visible.



# Broken Links:

What happens when a link doesn't work?

- First look at the link box for errors
- Dreamweaver can auto-check links
  - Files-site name- check links sitewide
- The report can then be corrected
  - Is it spelled correctly?
  - Is the website valid?
  - Did Dreamweaver suggest a fix?

# References:

Dreamweaver CS3 for Dummies. 2007. Indianapolis:

Wilkey Publishing, Inc.

Dreamweaver CS3 Program