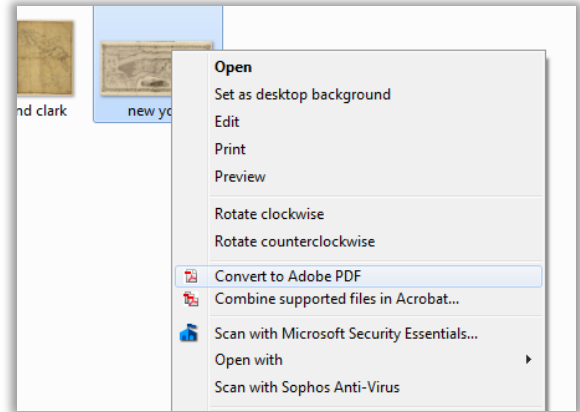
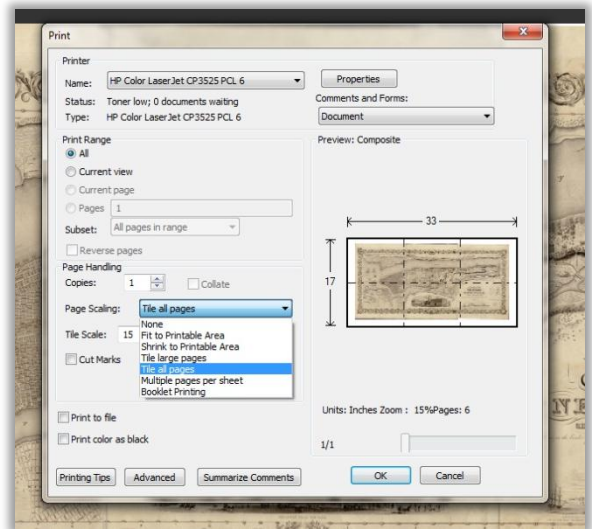


Printing Large Primary Sources in Sections

1. Download the largest file offered. This may take a few minutes. (Because of the large size, you may want to delete this download from your computer after printing.)
2. After saving the file, right click on it and choose “Convert to Adobe PDF”.



3. Choose “File”, “Print” and then, “Tile All Pages” in the dropdown menu next to “Page Scaling”. Depending on how large you want the image, and/or how many pages you want to tape together, select a “Tile Scale” % from the preferences.



4. For easier alignment when you go to tape the pieces together, be sure to increase the overlap. The default is set at an overlap of 0.005 in. Increasing it to 0.1 in. should be sufficient.

