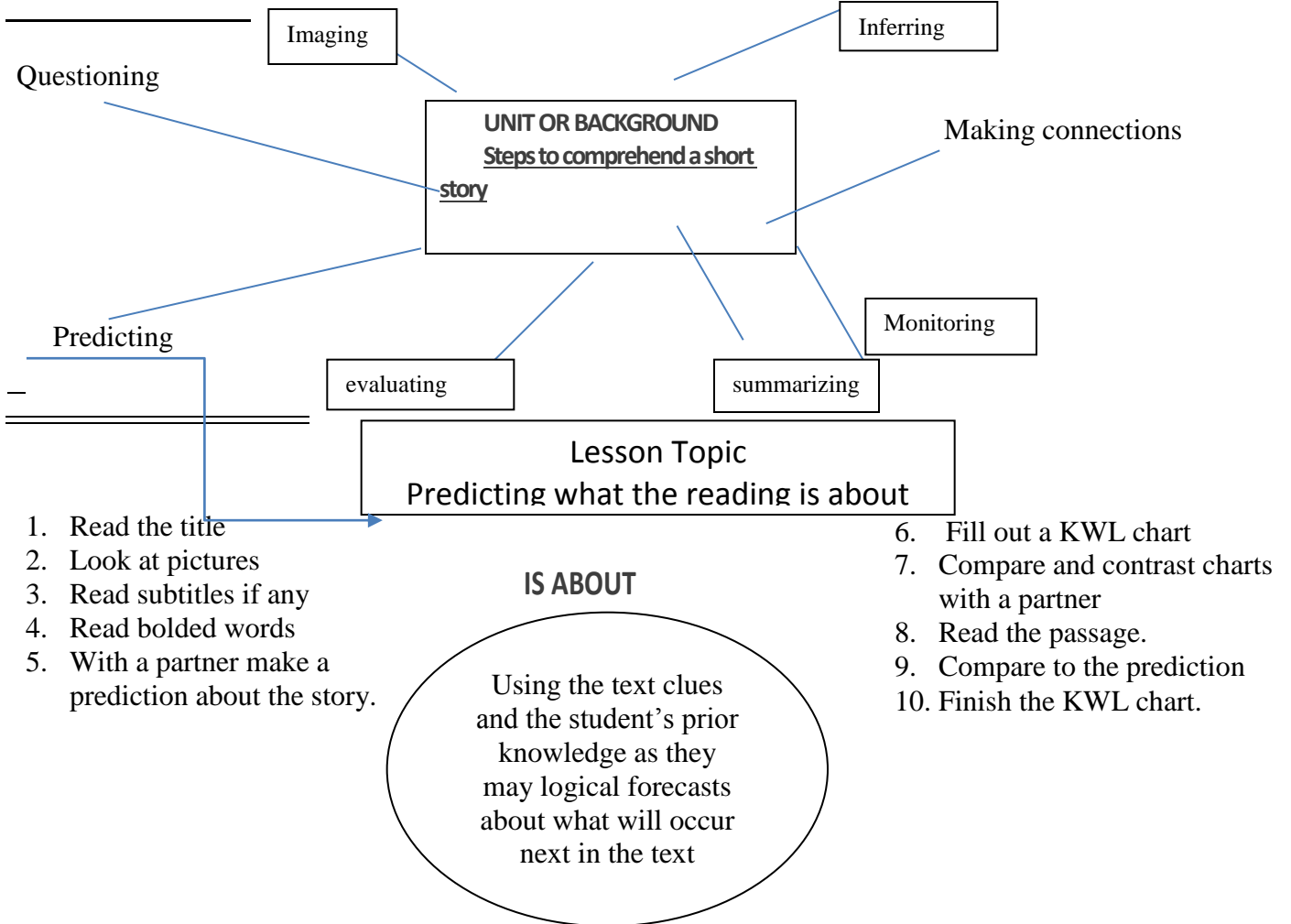


**LESSON ORGANIZER**

**Teaching Reading**

**Comprehension**



**DISCUSSION:** Relationship -1) Lesson to Unit AND 2) Importance of Lesson to Daily Life

It is the 3<sup>rd</sup> step in the Elite 8 reading strategies to be successful at reading.

Predictions are important for problem solving in life and finding solutions to daily situations or problems.

**Self- Test Questions (Evaluation):**

1. Did I read the title?
2. Did I look at the pictures?
3. Did I read any subtitles?
4. Did I read bolded words?
5. Did I make a prediction with a partner?
6. Did I fill out a KWL chart?
7. Did I compare and contrast a KWL chart with a partner?
8. Did I read the passage?
9. Did I compare the prediction with the passage?
10. Did I finish the KWL chart?

**Tasks/Strategies:**

Students will try the task as a whole class.  
Students will do the task again with a partner.  
Teacher will give feedback.  
Student will predict another passage on their own.  
Teacher will give feedback.