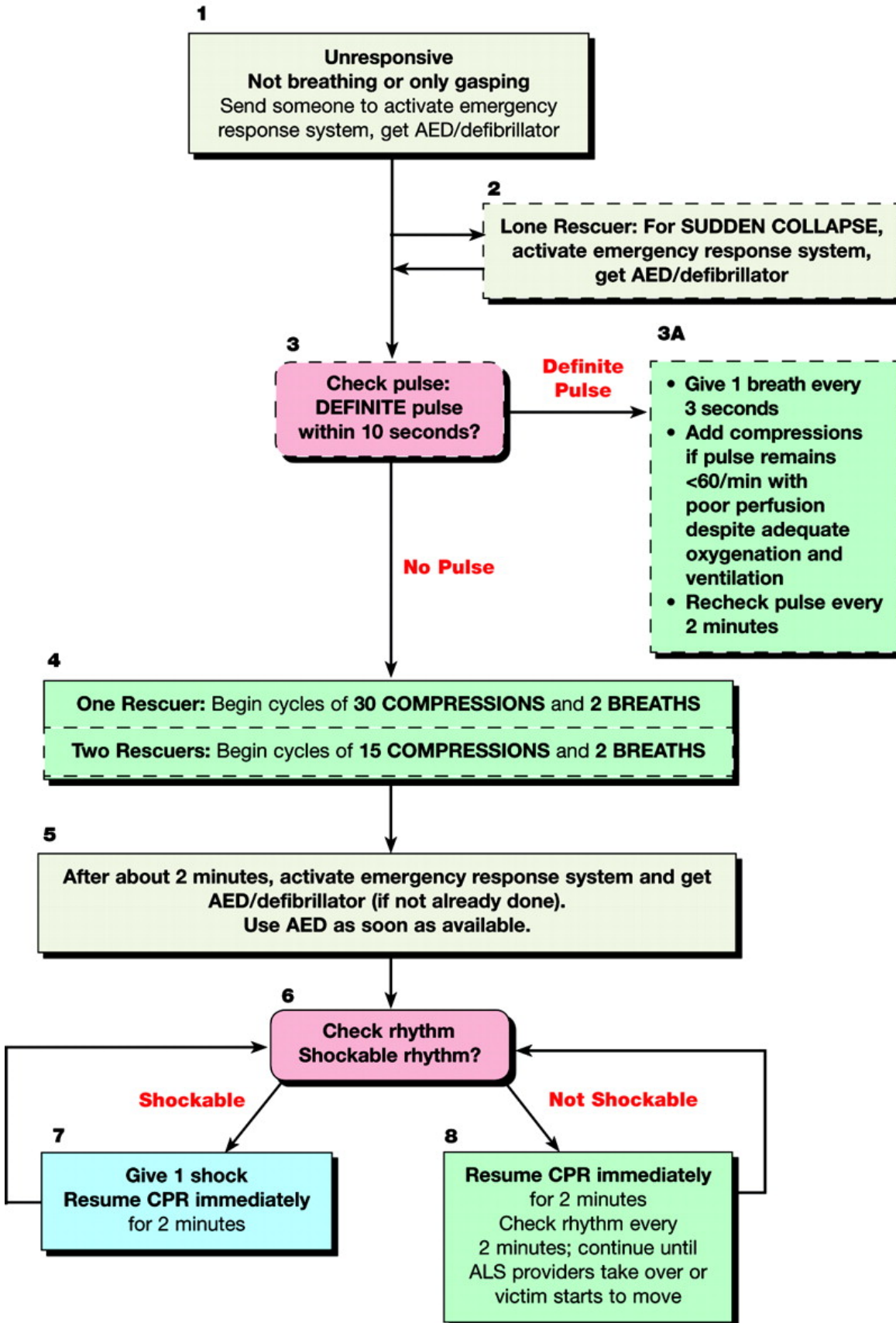


Pediatric BLS Healthcare Providers



High-Quality CPR

- Rate at least 100/min
- Compression depth to at least $\frac{1}{3}$ anterior-posterior diameter of chest, about $1\frac{1}{2}$ inches (4 cm) in infants and 2 inches (5 cm) in children
- Allow complete chest recoil after each compression
- Minimize interruptions in chest compressions
- Avoid excessive ventilation

Note: The boxes bordered with dashed lines are performed by healthcare providers and not by lay rescuers