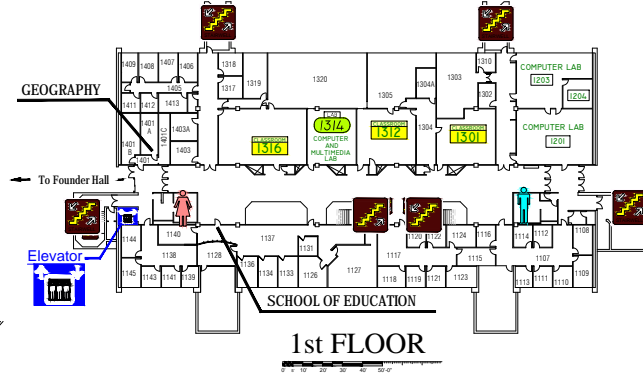
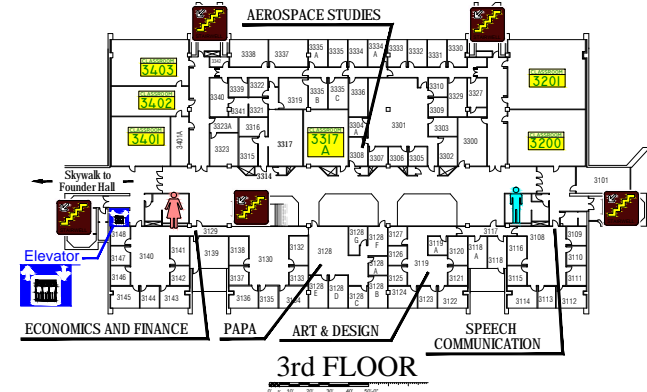
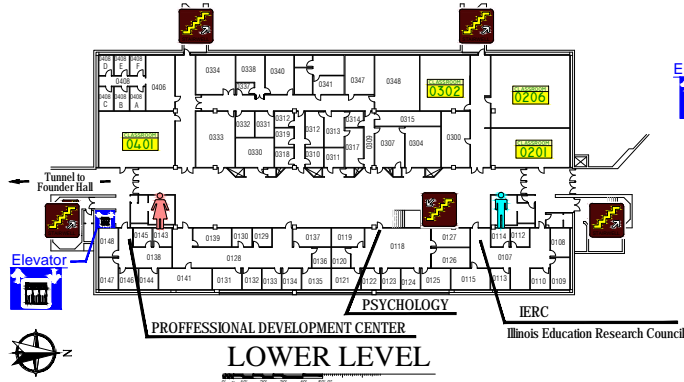


ALUMNI HALL

Send Comments on Floor Plans to:
donande@siue.edu



DIRECTORY

LOWER LEVEL

Illinois Education Research Council	0107
PROFESSIONAL DEVELOPMENT CENTER	0138
PSYCHOLOGY	0118

1st FLOOR OFFICES

GEOGRAPHY	1401
SCHOOL OF EDUCATION	1125

2nd FLOOR OFFICES

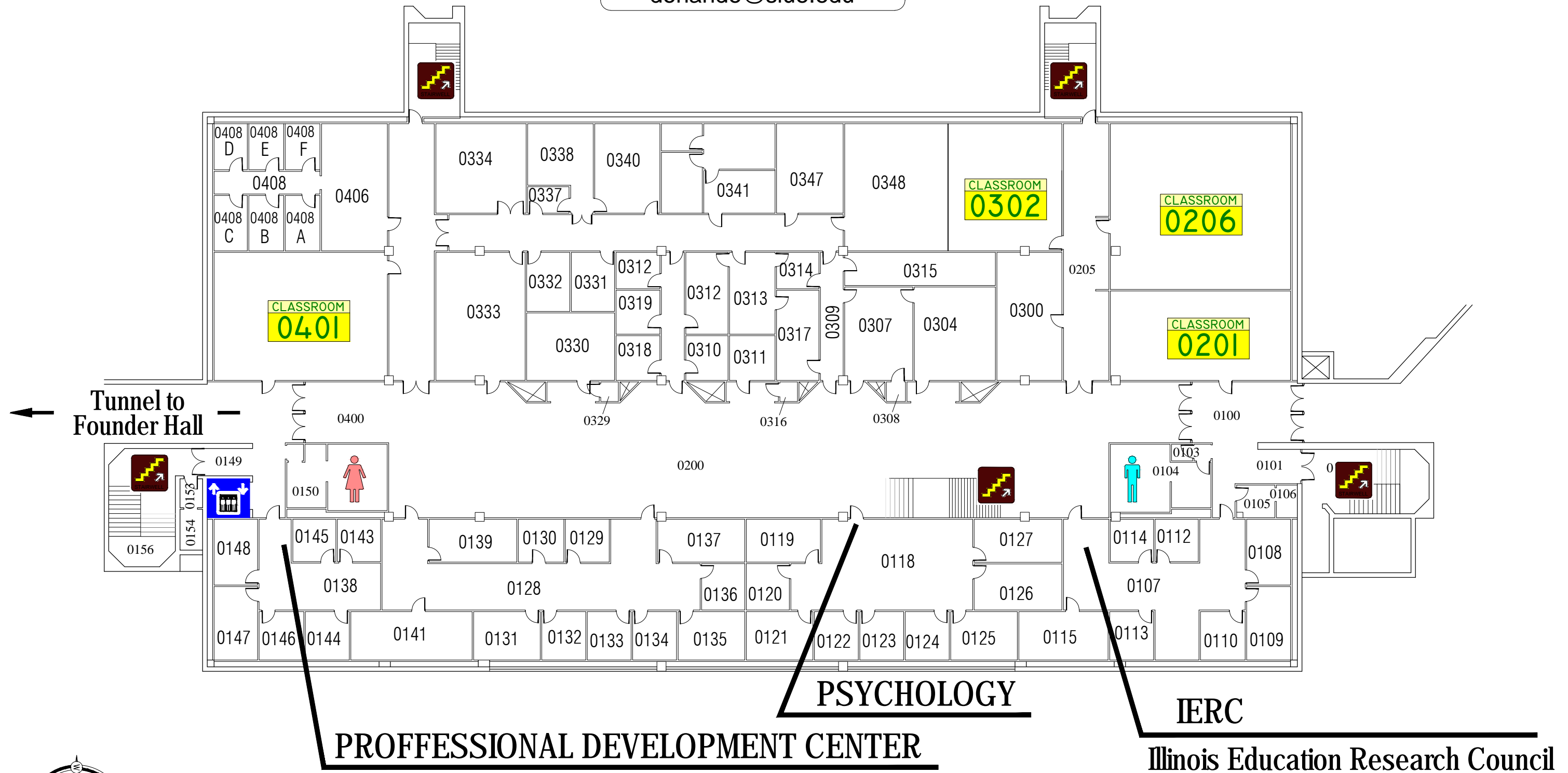
SCHOOL OF NURSING	2333
OUTREACH PROGRAMS	2126

3rd FLOOR OFFICES

AEROSPACE STUDIES	3340
ART & DESIGN	3119
ECONOMICS AND FINANCE	3129
PAPA (Public Administration & Policy Analysis)	3128
SPEECH COMMUNICATION	3108

Alumni Hall

Send Comments on Floor Plan to:
donande@siue.edu

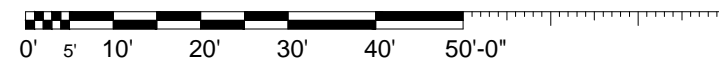
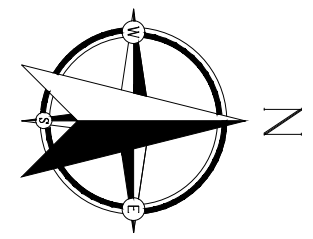


PROFESSIONAL DEVELOPMENT CENTER

PSYCHOLOGY

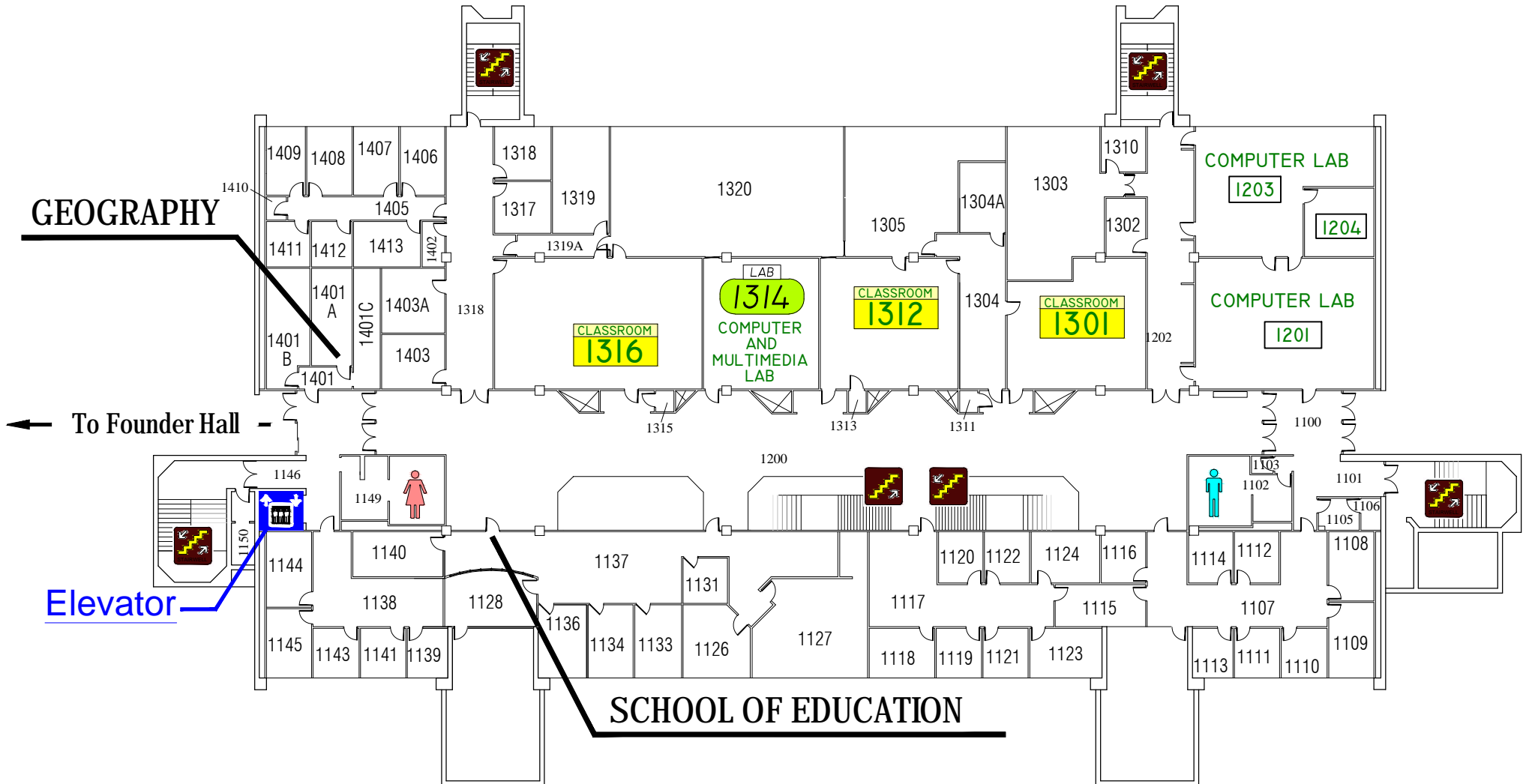
IERC
Illinois Education Research Council

LOWER LEVEL

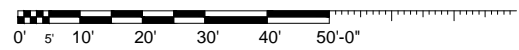
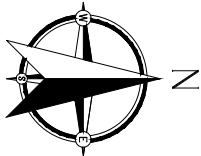


Alumni Hall

Send Comments on Floor Plan to:
donande@siue.edu

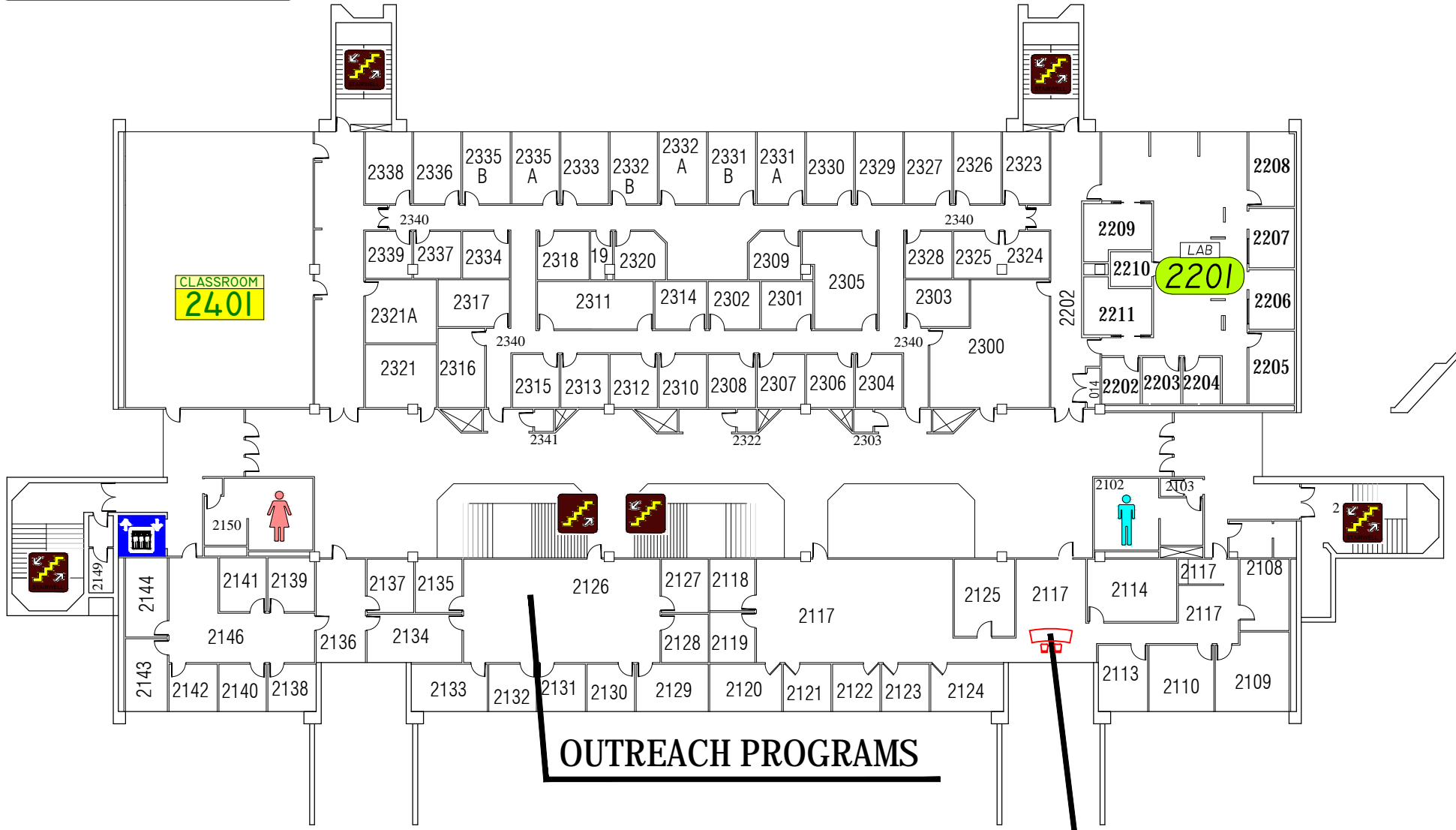


1st FLOOR

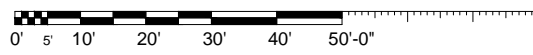
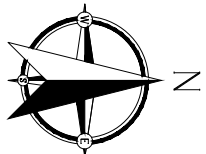


Alumni Hall

Send Comments on Floor Plan to:
donande@siue.edu



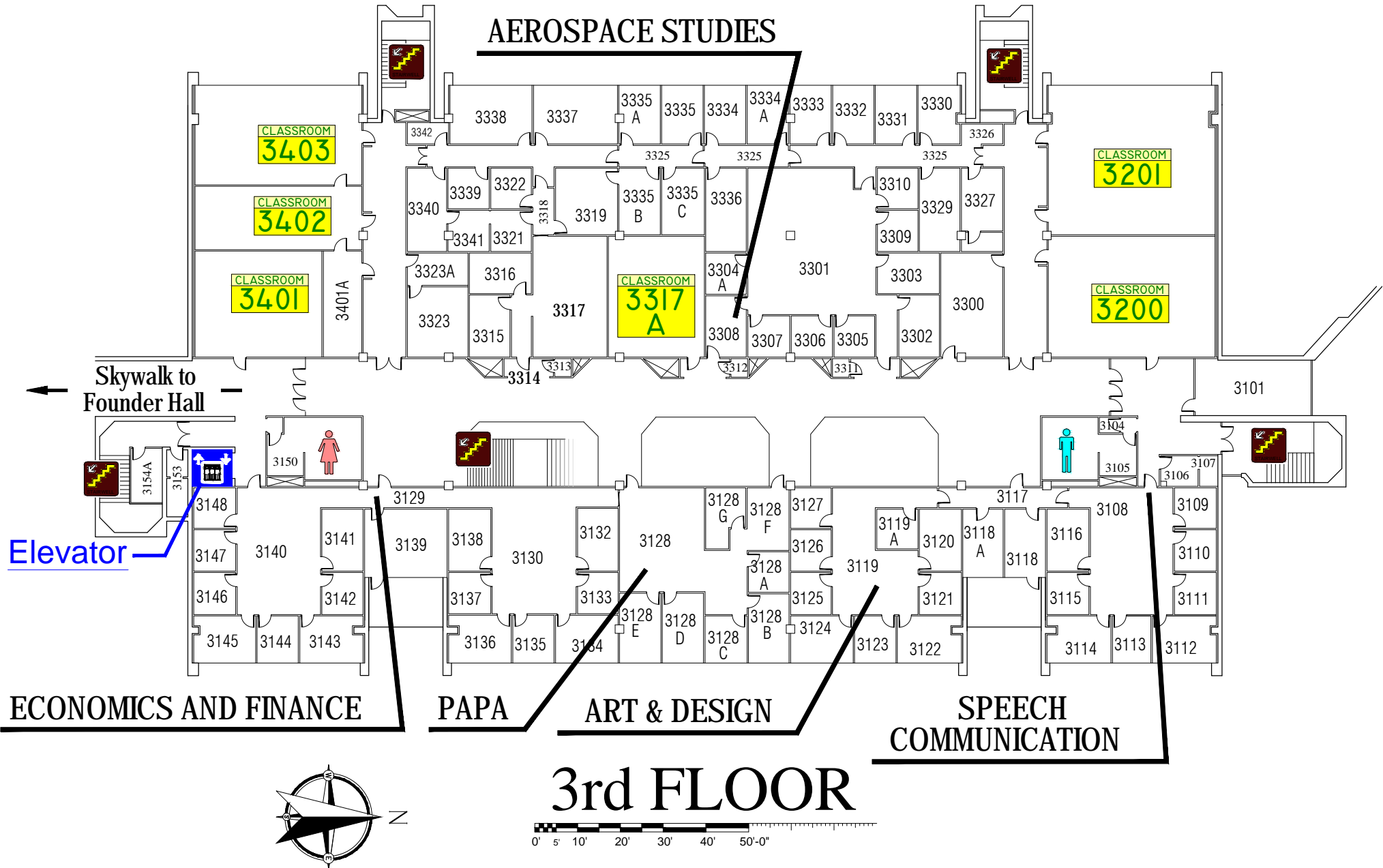
2nd FLOOR



Alumni Hall

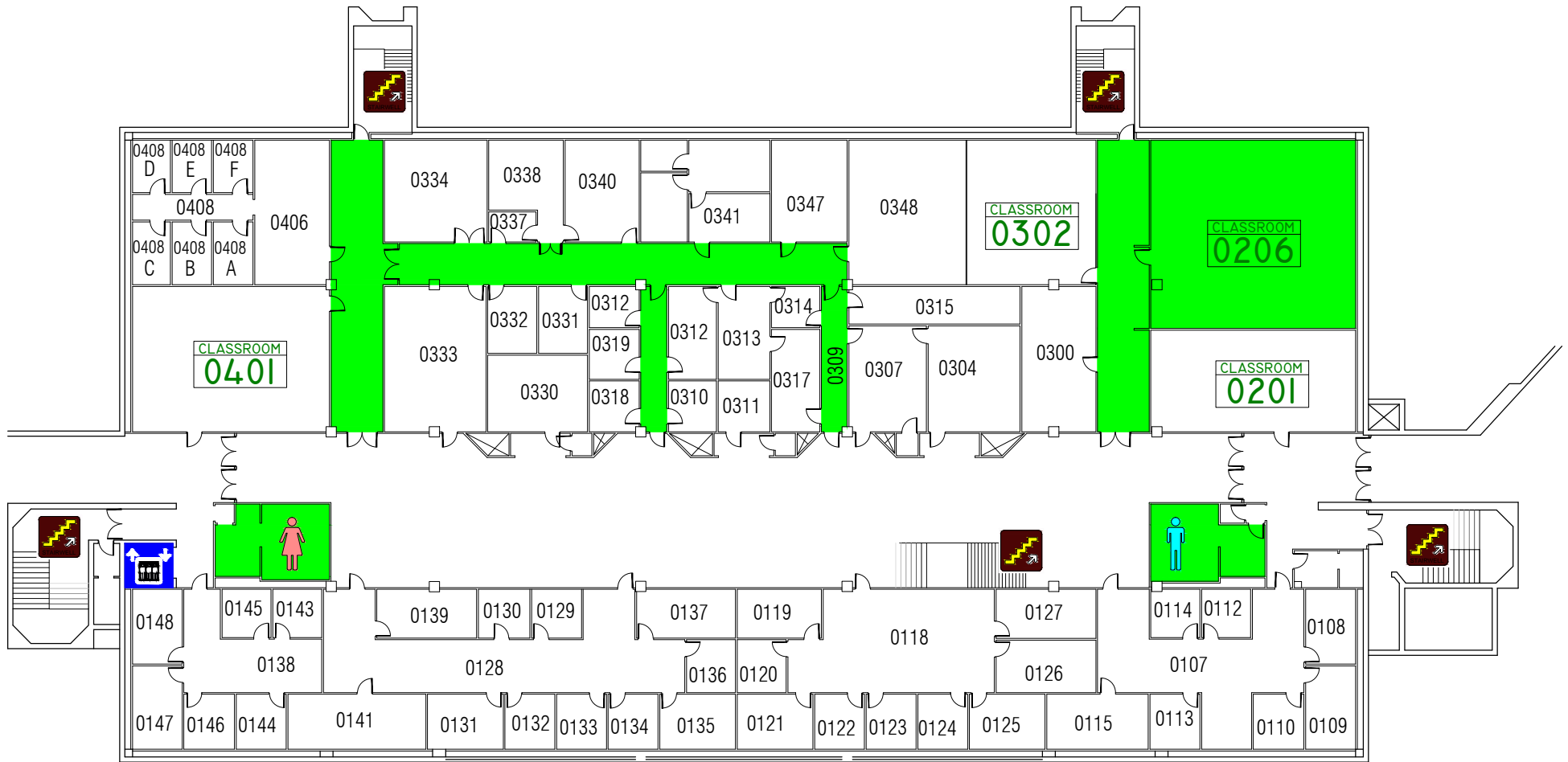
Send Comments on Floor Plan to:

donande@siue.edu

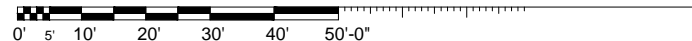


EMERGENCY STORM SHELTERS

In event of a Tornado Warning everyone should go to a Lower Level **Primary Storm Shelter**



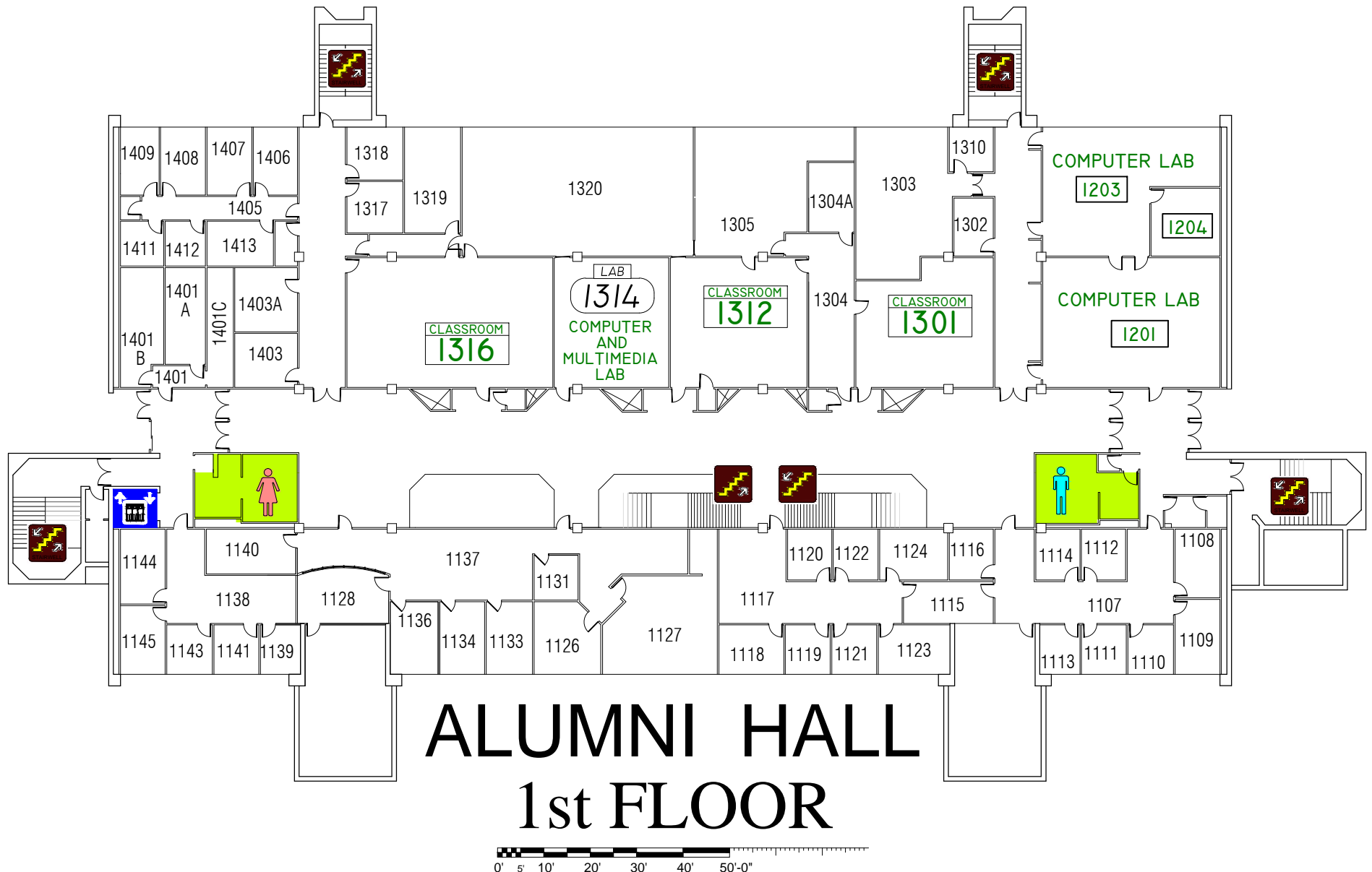
ALUMNI HALL LOWER LEVEL



EMERGENCY STORM SHELTERS

In event of a Tornado Warning everyone should go to a Lower Level **Primary Storm Shelter**

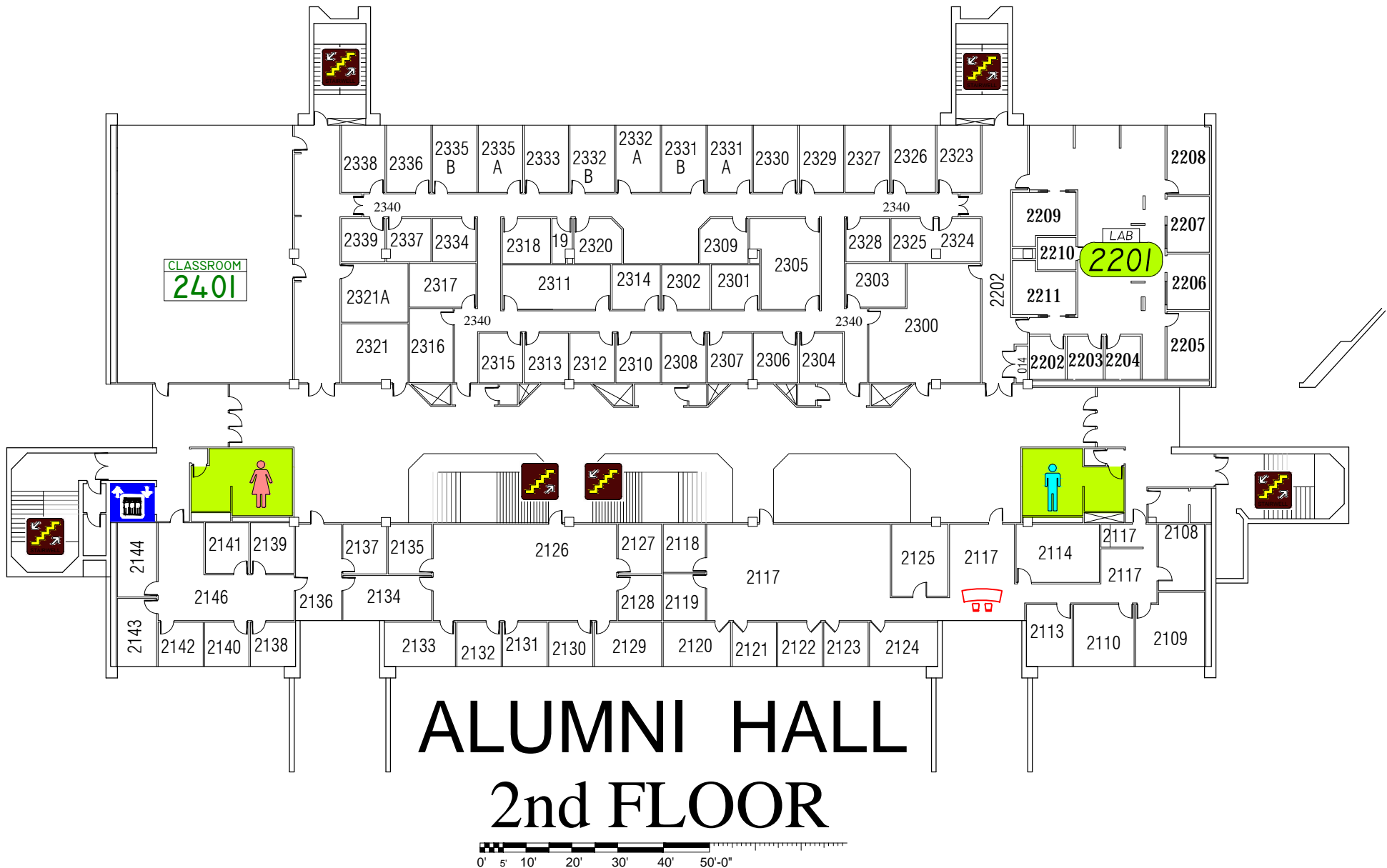
In event you can not get to a Primary Shelter go to a **Secondary Storm Shelter**



EMERGENCY STORM SHELTERS

In event of a Tornado Warning everyone should go to a Lower Level **Primary Storm Shelter**

In event you can not get to a Primary Shelter go to a **Secondary Storm Shelter**



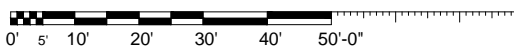
EMERGENCY STORM SHELTERS

In event of a Tornado Warning everyone should go to a Lower Level **Primary Storm Shelter**

In event you can not get to a Primary Shelter go to a **Secondary Storm Shelter**



ALUMNI HALL 3rd FLOOR

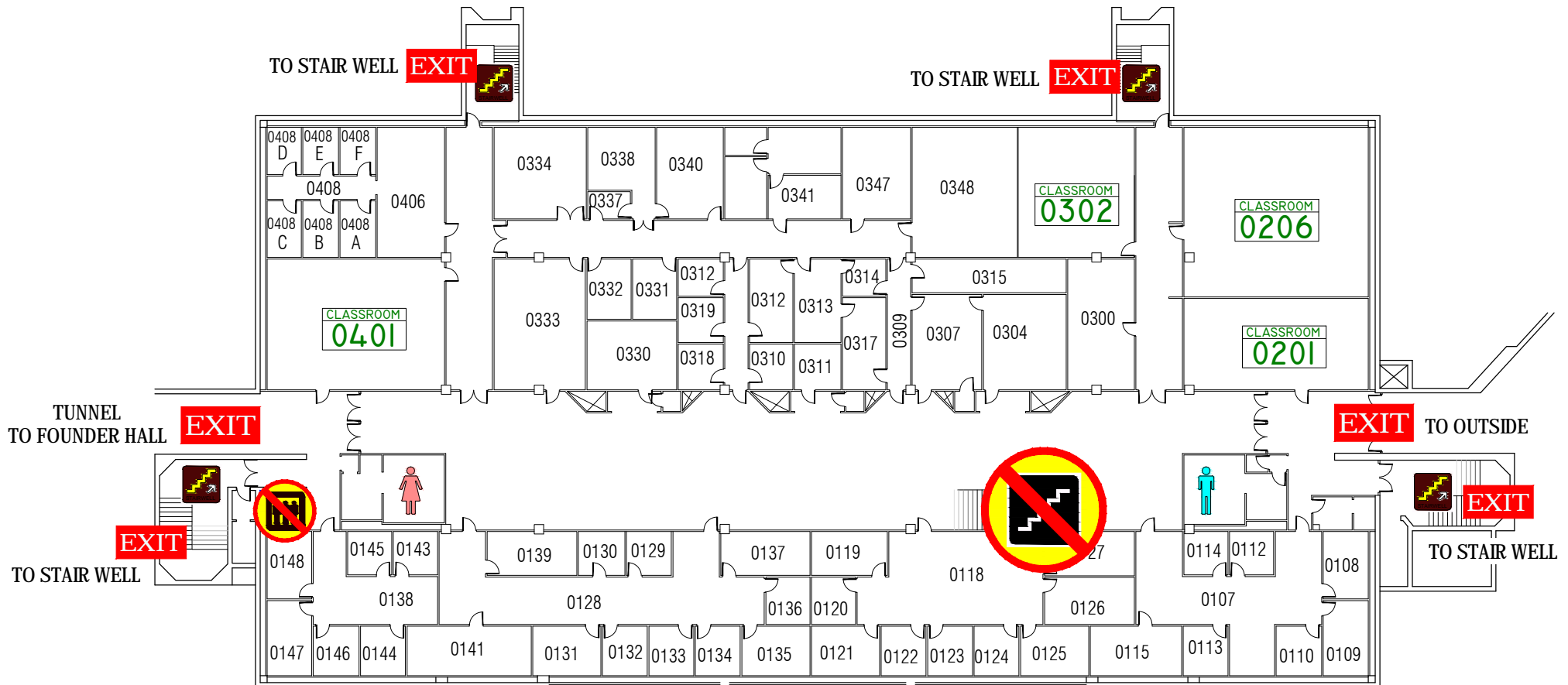


EMERGENCY EXIT PLAN

EXIT IN CASE OF EMERGENCY USE MARKED EXITS **EXIT**

 DO NOT USE OPEN STAIRS OR ELEVATORS 

 WHEELCHAIR USERS ARE TO GO INTO 
STAIR WELLS **EXIT** AND WAIT FOR EMERGENCY PERSONNEL.

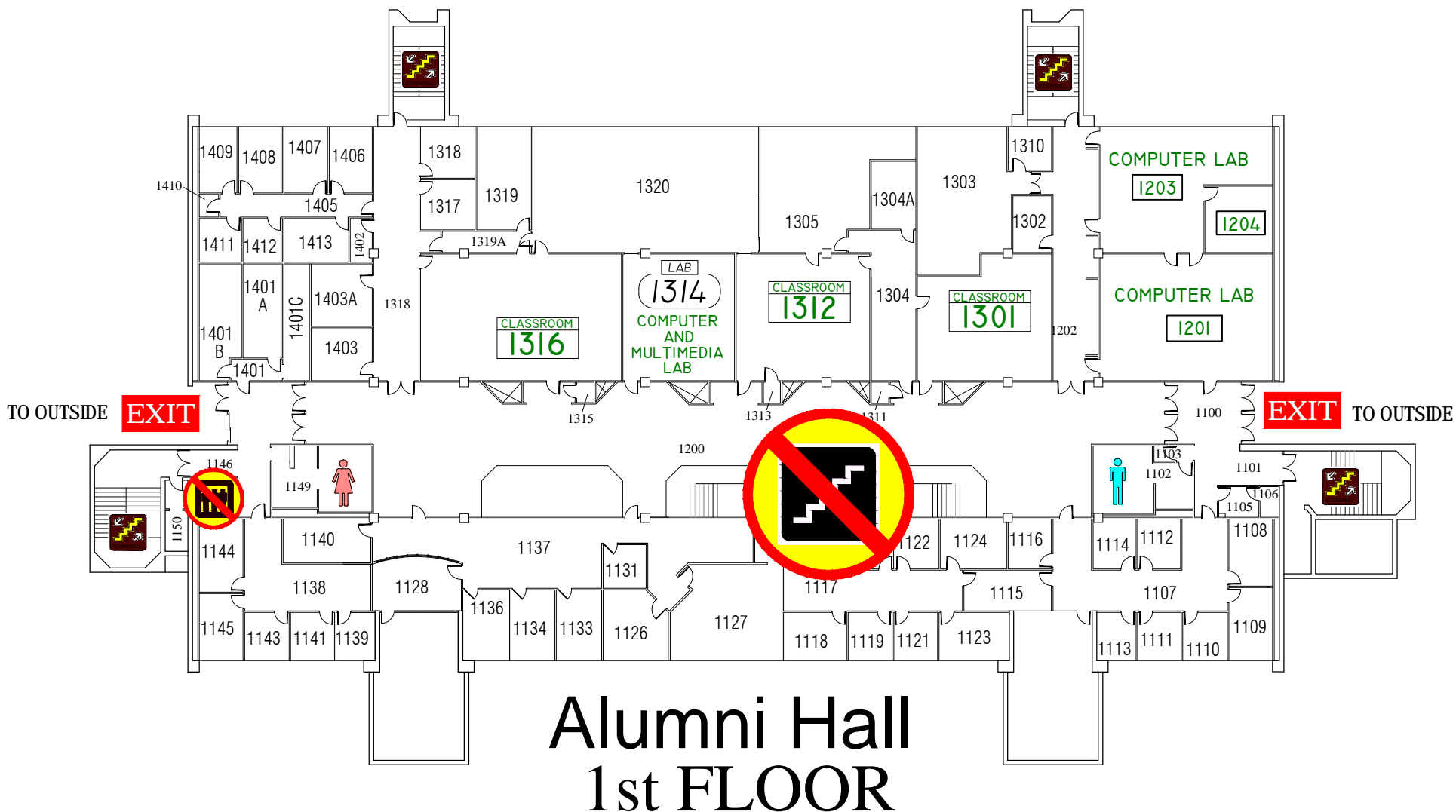


Alumni Hall
LOWER LEVEL

EMERGENCY EXIT PLAN

EXIT IN CASE OF EMERGENCY USE MARKED EXITS **EXIT**

 DO NOT USE OPEN STAIRS OR ELEVATORS 



Alumni Hall
1st FLOOR

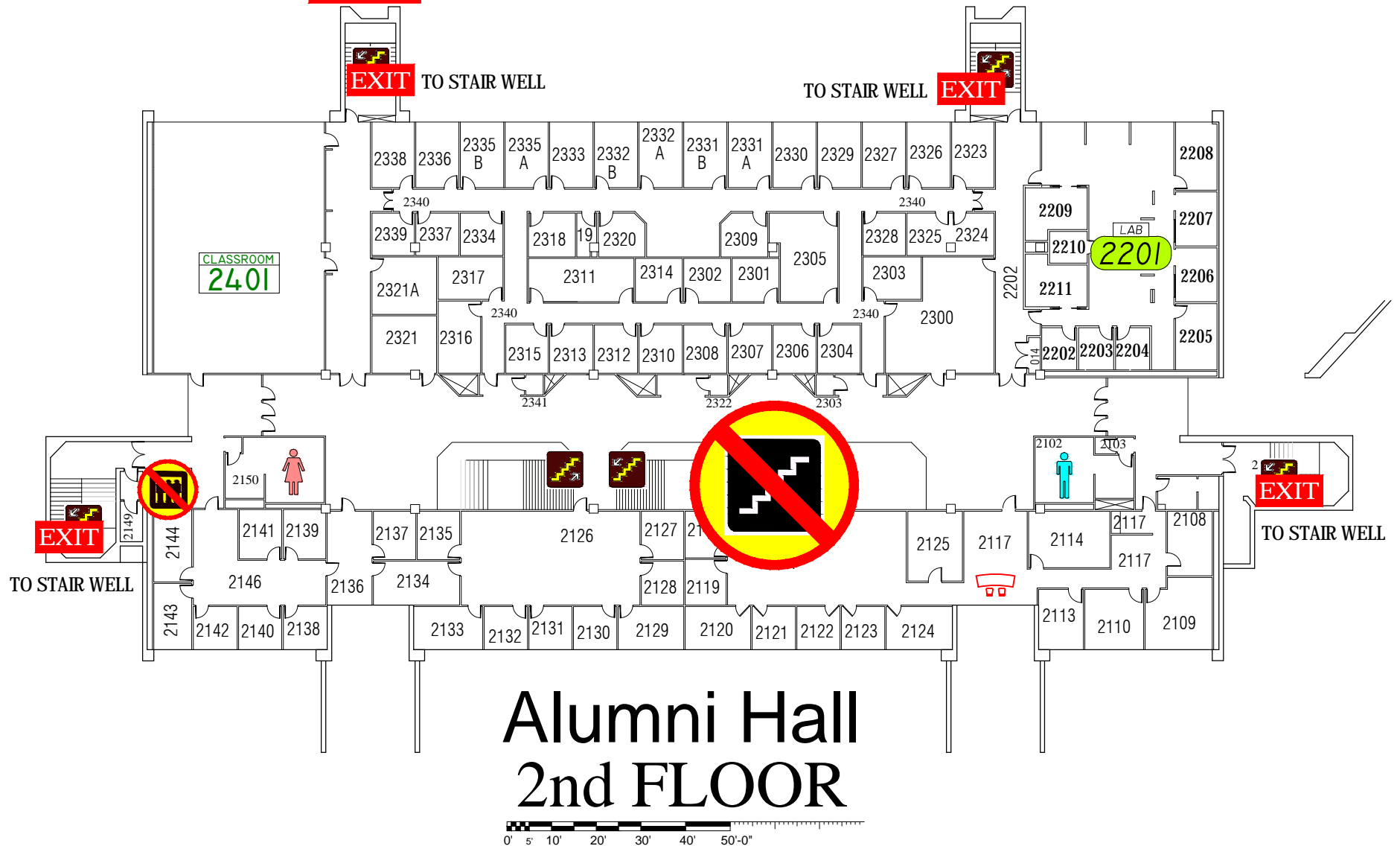
0' 5' 10' 20' 30' 40' 50'-0"

EMERGENCY EXIT PLAN

EXIT IN CASE OF EMERGENCY USE MARKED EXITS **EXIT**

 DO NOT USE OPEN STAIRS OR ELEVATORS 

 WHEELCHAIR USERS ARE TO GO INTO 
STAIR WELLS **EXIT** AND WAIT FOR EMERGENCY PERSONNEL.



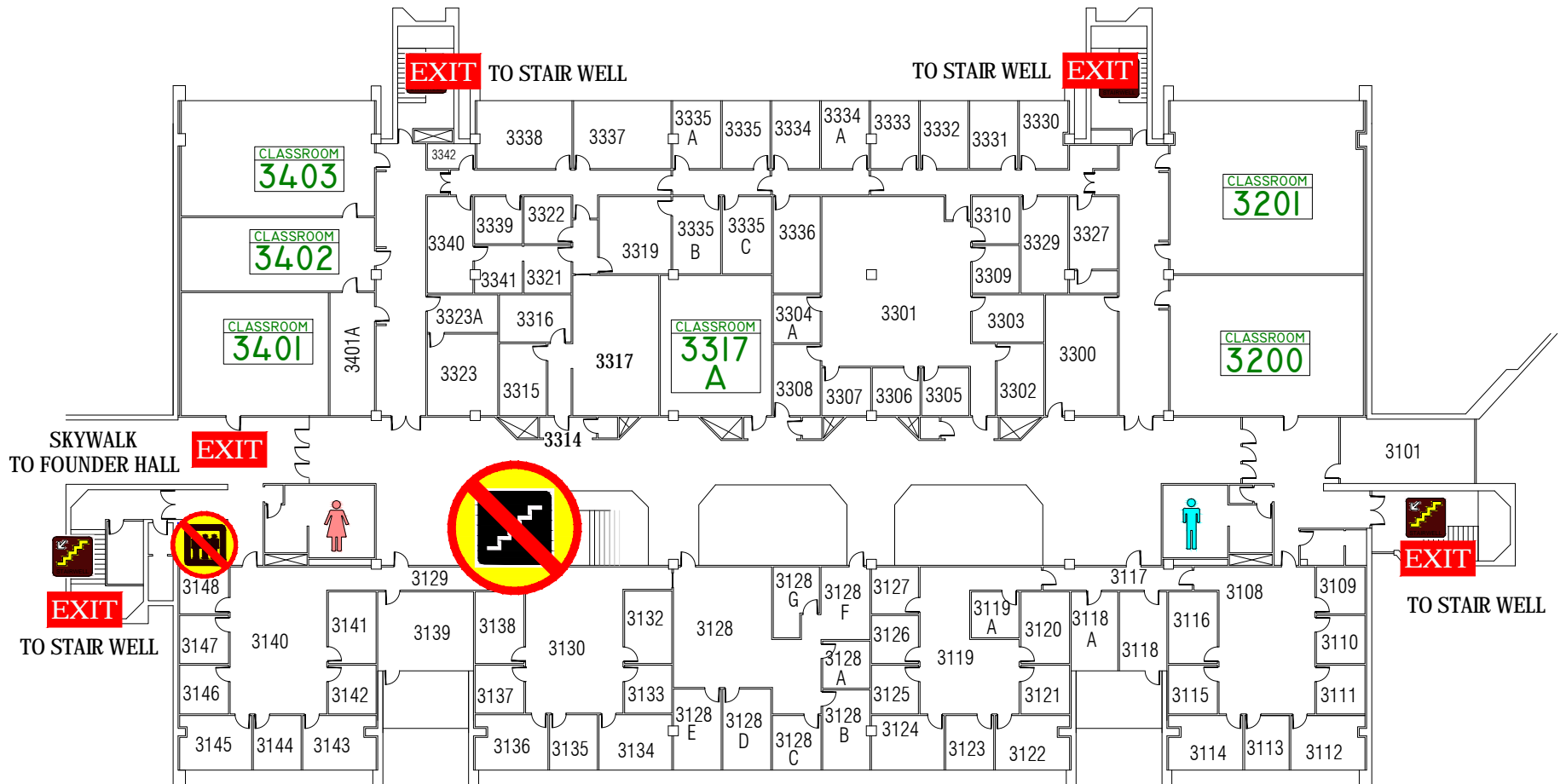
EMERGENCY EXIT PLAN

EXIT IN CASE OF EMERGENCY USE MARKED EXITS **EXIT**

 DO NOT USE OPEN STAIRS OR ELEVATORS 

 WHEELCHAIR USERS ARE TO GO INTO 

STAIR WELLS **EXIT** AND WAIT FOR EMERGENCY PERSONNEL.



Alumni Hall
3rd FLOOR