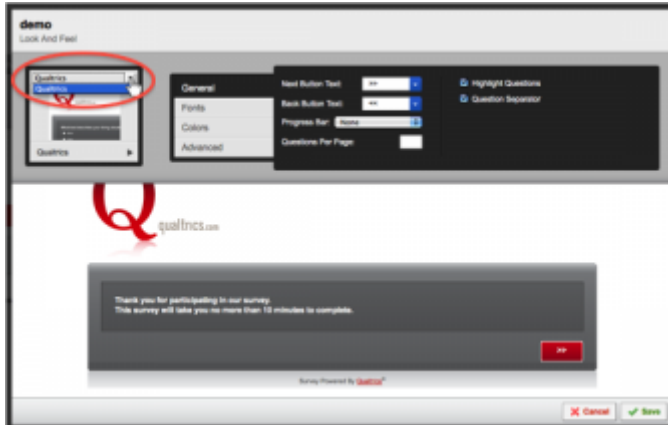
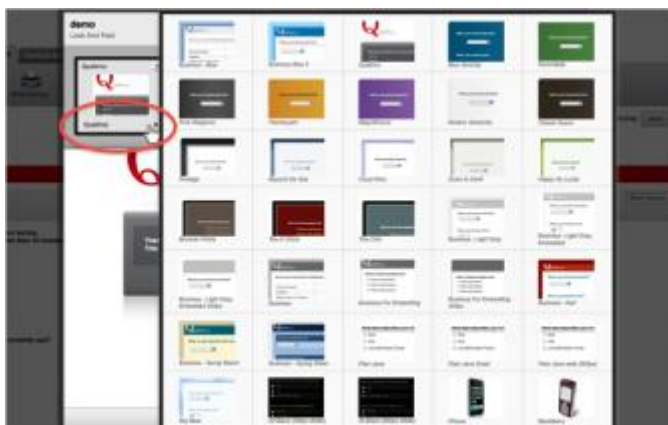


## To apply a skin to your survey in the Look and Feel:

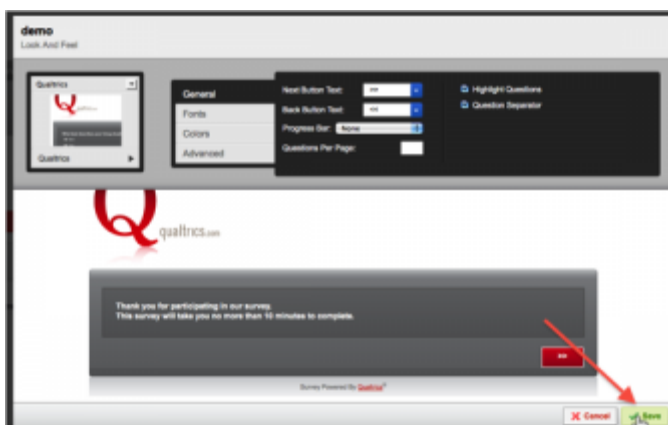
1. Click on the Skins Library drop-down menu in the upper left hand corner of the Look and Feel (found above the thumbnail of the current skin), and select the Qualtrics library or your organization's library.



2. After selecting a library from the drop-down, click the Skins Menu drop-down to see all of the skins contained in the selected library.



3. From the Skins Menu, select a skin you would like to apply to your survey by clicking on the thumbnail of the skin.
4. The skin will be applied to the preview in the Look and Feel. To finalize the change, click **Save**.



## More Information

### [qtips](#)

- If your organization has a license with Qualtrics, we can build you a skin with your organization's logo at the top. If you do not see your organization's branded skins in the Look and Feel, and you would like a skin built, contact your brand administrator.
- If you are going to put a logo into your header that will be the same width as the skin, please note that the default skin width for the Qualtrics skins is 770px.
- All skins available in the skins libraries are built by Qualtrics. If you experience any issues with the skins or need a new skin built, please contact our support team at [support@qualtrics.com](mailto:support@qualtrics.com).
- For information on the Mobile Device Look and Feel Templates and valid question types with those templates, please look at the [Mobile Device Look and Feel](#) page.