

Southern Illinois University at Edwardsville
Survey of 2012 Baccalaureate Graduates -- One Year Out

Survey Results for Schools

February 2014

Survey Administered By
The Office of Undergraduate Assessment and Program Review

Survey Results Compiled By
The Office of Institutional Research and Studies

Southern Illinois University at Edwardsville

Survey of 2012 Baccalaureate Graduates -- One Year Out

Contents

Introduction

Methodology

Survey Population and Respondents

- Charts: *2012 Baccalaureate Recipients, Profile*
- \$ *Gender*
 - \$ *Race/Ethnic*
 - \$ *Age at Graduation*
 - \$ *Matriculation Status*
 - \$ *Time to Degree for New Freshmen*
 - \$ *Time to Degree for New Transfers*

- Table: *Comparison of All Graduates to Survey Respondents*

Survey Results

- Charts: *2012 Baccalaureate Graduates One Year Out, Satisfaction*
- \$ *Present Attitude Toward the University*
 - \$ *Present Attitude Towards Alumni Bachelor's Degree Major*
 - \$ *Quality of SIUE Education Relative to That of Friends at Other Schools*

- 2012 Baccalaureate Graduates One Year Out, Additional Education*
- \$ *Enrolled Since Bachelors Degree*
 - \$ *How Well Bachelor's Degree Prepared Alumni for Additional Degree*

- 2012 Baccalaureate Graduates One Year Out, Employment*
- \$ *Employment Status*
 - \$ *Place of Employment*
 - \$ *Job Relation to Major*
 - \$ *Job Satisfaction*
 - \$ *How Well Bachelor's Degree Program Prepared Alumni for Present Job*
 - \$ *Mean Salary of Alumni Employed Full Time*

- Helpfulness of University Experiences in:*
- \$ *Developing Critical Thinking Ability*
 - \$ *Developing Sense of Ethics*
 - \$ *Understanding People with Different Backgrounds*
 - \$ *Becoming a more Active Citizen*
 - \$ *Improving Quality of Life (aside from financial benefits)*
 - \$ *Developing Reasoning Skills*
 - \$ *Viewing Problems from Different Perspectives*
 - \$ *Developing Ability to Solve Problems*
 - \$ *Making Informed Decisions as a Citizen*

- \$ *Developing Writing Skills*
- \$ *Developing Oral Communication Skills*
- \$ *Developing Knowledge of Scientific and Technological Developments*

Tables:	<i>Part I</i>	<i>Employment Questions</i>
	<i>Part II</i>	<i>Education Questions</i>
	<i>Part III</i>	<i>Satisfaction Questions</i>
	<i>Part IV</i>	<i>Educational Practices Questions</i>
	<i>Part V</i>	<i>Program Quality Questions</i>
	<i>Part VI</i>	<i>Educational Effectiveness Questions</i>

Questionnaire

Southern Illinois University Edwardsville Survey of 2012 Baccalaureate Graduates -- One Year Out

Introduction

This one-year out baccalaureate survey was done to provide data for the University's undergraduate program reviews and other planning uses.

After the first six years, the surveys were reviewed and changed, modifying some questions and value scales, and adding some additional questions.

The current survey was administered during the summer and fall of 2013 to calendar year 2012 baccalaureate graduates of SIUE. The questionnaire includes 18 questions common to all Illinois public universities. These are the first 18 questions in the survey, forming Parts I, II, III, and the beginning of Part IV (Employment Questions, Education Questions, Satisfaction Questions, and Educational Practices Questions). SIUE added to these one question on industry of employment and three additional questions on educational practices, appended two additional parts to the survey to add questions about program quality, and educational effectiveness, and also added a comments section. (A questionnaire is included in Appendix A.)

Methodology

The survey questionnaire and a cover letter were adapted from the questionnaire and letter developed for previous surveys. SIUE Alumni Services provided current addresses for calendar year 2012 graduates as determined from institutional records. The survey was distributed in May 2013 to May 2012 baccalaureate graduates and in September 2013 to August 2012 and December 2012 baccalaureate graduates. Each envelope included a cover letter, a questionnaire, and a postage-paid, pre-addressed return envelope. Each questionnaire was stamped with a sequential, identifying number which was also stamped on a listing of the graduates (this aided in identifying the surveys when returned).

Surveys were mailed first class to the 1,268 May 2012 baccalaureate graduates, for whom addresses were available on May 13, 2013. On June 11, a second wave mailing of the surveys was sent to the 1,063 remaining non-respondents.

The second distribution began on September 26, 2013 to the 865 August and December 2012 baccalaureate graduates with known addresses. Surveys were mailed first class to this group. A second wave mailing of the survey was sent to 750 non-responders on December 3, 2013.

Returned surveys began arriving in mid-May and continued through the summer and fall, with a few arriving as late as January 2014. As the surveys came in, each was matched with the corresponding stamped listing. The students' names were then checked against the alphabetic list of alumni to verify (or, if the alumnus chose not to provide the identification number, to obtain) the student identification number. The student identification number was the key which allowed merging of survey data with administrative records (e.g., biographic, graduation, matriculation, and enrollment information).

Southern Illinois University Edwardsville
Survey of 2012 Baccalaureate Graduates -- One Year Out

Survey Population and Respondents

	Number of Graduates
2012 Baccalaureate Degrees	2,173
Less persons who received 2 baccalaureate degrees	19
2012 Baccalaureate Graduates	2,154
Less Graduates with No Address Available *	28
Graduates Surveyed	2,126
Less Non-Deliverable Surveys	120
Less Non-Responding Graduates	1,568
Survey Respondents	438
Gross Response Rate (Respondents/Total Surveyed)	20.60%
Adjusted Response Rate (Respondents/Delivered Surveys)	21.83%

* Includes deceased alumni, foreign addresses and known bad addresses.

Southern Illinois University Edwardsville
Survey of 2012 Baccalaureate Graduates -- One Year Out

Comparison of All Graduates to Survey Respondents

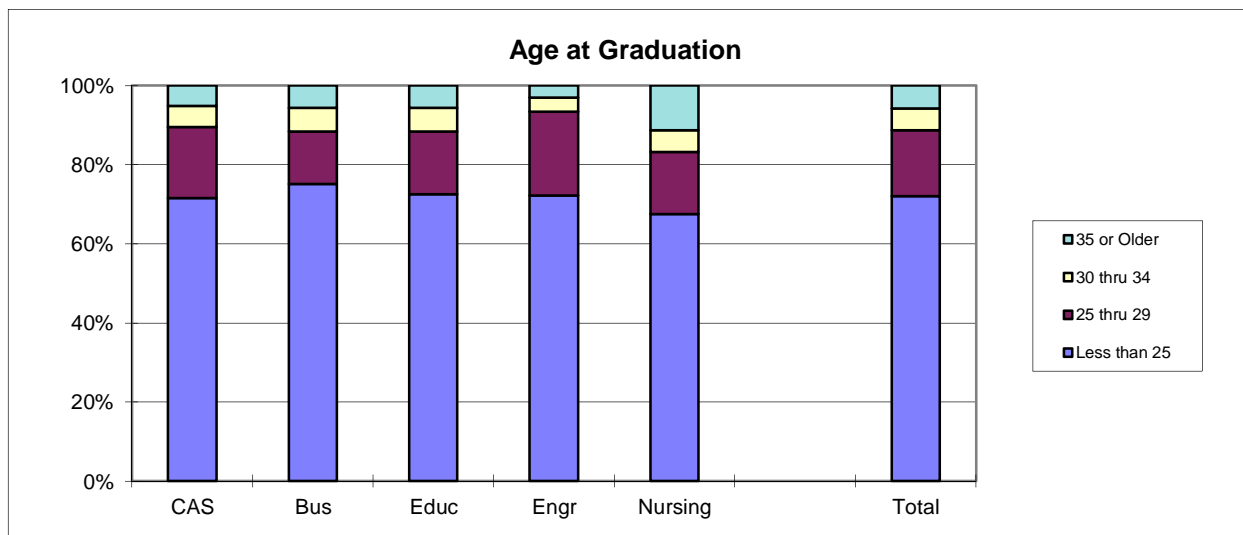
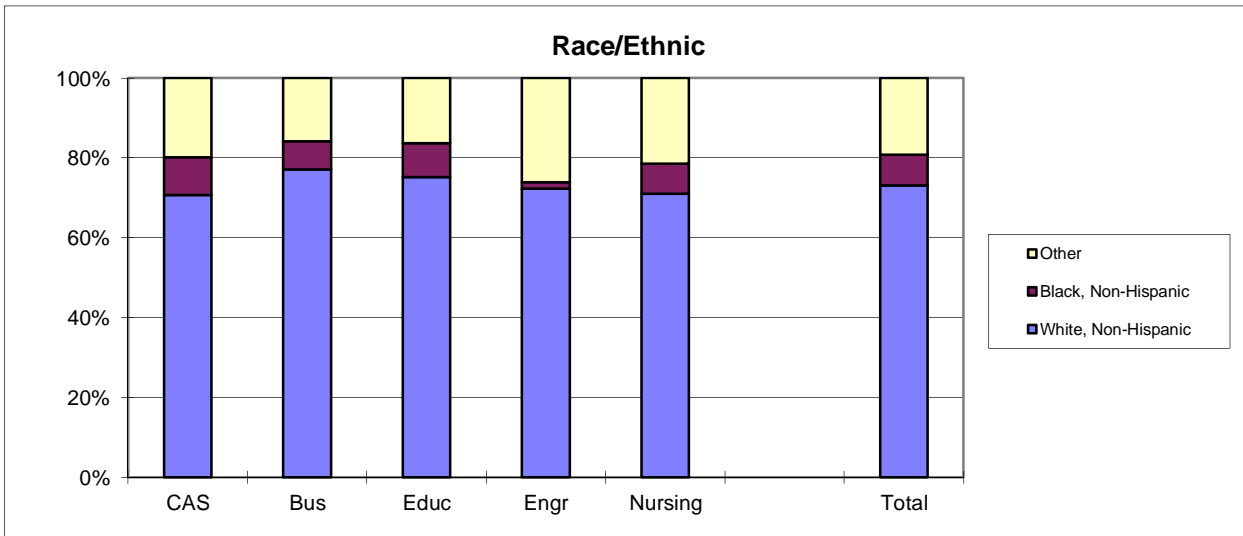
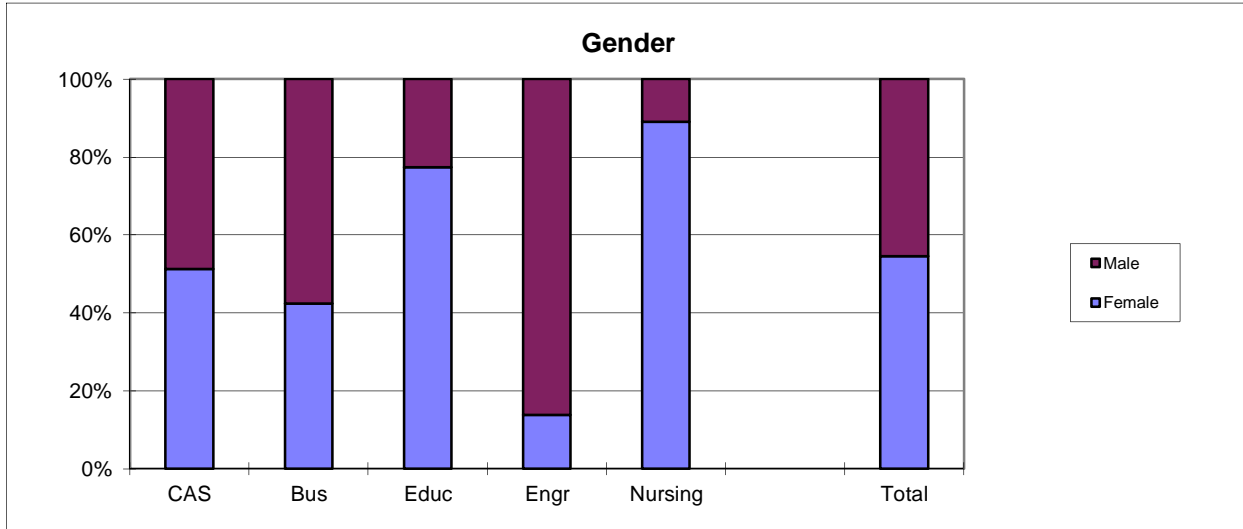
School Detail		All Graduates					Total
		CAS	BUS	EDU	ENG	NUR	
Total		861	410	454	238	210	2173
Female		51.2%	42.4%	77.3%	13.9%	89.0%	54.6%
Male		48.8%	57.6%	22.7%	86.1%	11.0%	45.4%
Missing Data		0.0%	0.0%	0.0%	0.0%	0.0%	0.0%
White, Non-Hispanic		70.7%	77.1%	75.1%	72.3%	71.0%	73.0%
Black, Non-Hispanic		9.4%	7.1%	8.6%	1.7%	7.6%	7.8%
Asian/Pacific Islander		1.9%	0.7%	1.5%	1.3%	1.4%	1.5%
American Indian/Alaskan Native		0.1%	0.0%	0.2%	0.0%	0.0%	0.1%
Hispanic		1.7%	2.0%	2.0%	1.3%	1.4%	1.7%
Non-Resident Alien		0.2%	0.2%	0.2%	8.8%	0.0%	1.2%
Missing Data		15.9%	12.9%	12.3%	14.7%	18.6%	14.7%
Age at Graduation							
range		20 to 57	21 to 54	20 to 66	21 to 52	21 to 54	20 to 66
median		23.0	23.0	23.0	23.0	23.0	23.0
Bachelor of Science		62.1%	73.4%	90.3%	98.7%	100.0%	77.8%
Bachelor of Music		2.4%	0.0%	0.0%	0.0%	0.0%	1.0%
Bachelor of Arts		28.6%	0.0%	9.7%	1.3%	0.0%	13.5%
Bachelor of Fine Arts		2.0%	0.0%	0.0%	0.0%	0.0%	0.8%
Bachelor of Sci in Accountancy		0.0%	26.6%	0.0%	0.0%	0.0%	5.0%
Bachelor of Liberal Studies		0.7%	0.0%	0.0%	0.0%	0.0%	0.3%
Bachelor of Social Work		4.2%	0.0%	0.0%	0.0%	0.0%	1.7%
Missing Data		0.0%	0.0%	0.0%	0.0%	0.0%	0.0%
Graduated Spring 2012		55.4%	55.4%	70.3%	60.5%	55.7%	59.1%
Graduated Summer 2012		17.2%	15.4%	11.5%	8.0%	1.4%	13.1%
Graduated Fall 2012		27.4%	29.3%	18.3%	31.5%	42.9%	27.8%
Missing Data		0.0%	0.0%	0.0%	0.0%	0.0%	0.0%
Matriculated as a New Freshman		53.3%	60.5%	58.6%	51.3%	64.8%	56.6%
Matriculated as a Transfer		44.1%	37.8%	38.8%	47.1%	34.8%	41.2%
Matriculated as a Non-Degree Student		0.1%	0.0%	0.0%	0.0%	0.0%	0.0%
Missing Data		2.4%	1.7%	2.6%	1.7%	0.5%	2.1%
Time to Degree for New Freshmen							
3 Years or Fewer		8.1%	7.7%	3.4%	2.5%	5.1%	6.1%
4 Years		52.7%	56.5%	60.2%	49.2%	61.0%	55.6%
5 Years		23.7%	21.0%	27.1%	32.8%	20.6%	24.5%
6 Years		5.9%	4.4%	4.9%	9.0%	5.1%	5.6%
7 Years		2.6%	1.6%	1.1%	4.1%	1.5%	2.1%
8 Years		2.2%	3.2%	0.8%	0.0%	2.9%	1.9%
9 Years		1.1%	1.6%	1.1%	1.6%	1.5%	1.3%
10 Years		0.7%	0.8%	0.0%	0.0%	0.7%	0.5%
11 Years or More		3.1%	3.2%	1.5%	0.8%	1.5%	2.4%
Missing Data		0.0%	0.0%	0.0%	0.0%	0.0%	0.0%
Time to Degree for Transfers							
2 or Fewer Years		25.8%	34.2%	33.0%	17.9%	54.8%	30.0%
3 Years		32.9%	26.5%	38.1%	43.8%	19.2%	33.0%
4 Years		17.9%	19.4%	13.6%	16.1%	16.4%	17.0%
5 Years		10.5%	7.7%	6.8%	10.7%	5.5%	8.9%
6 Years		5.0%	3.9%	2.8%	4.5%	0.0%	3.9%
7 Years		1.6%	1.9%	0.6%	2.7%	0.0%	1.5%
8 Years		1.3%	2.6%	1.1%	0.9%	1.4%	1.5%
9 Years		1.1%	0.6%	0.6%	0.9%	0.0%	0.8%
10 Years or More		3.4%	1.9%	2.3%	2.7%	2.7%	2.8%
Missing Data		0.0%	0.0%	0.0%	0.0%	0.0%	0.0%
Graduating GPA (4 point scale)							
Mean		3.180	3.106	3.401	3.078	3.345	3.217
Std Dev		0.461	0.415	0.397	0.445	0.340	0.443

Southern Illinois University Edwardsville
Survey of 2012 Baccalaureate Graduates -- One Year Out

Comparison of All Graduates to Survey Respondents, cont.

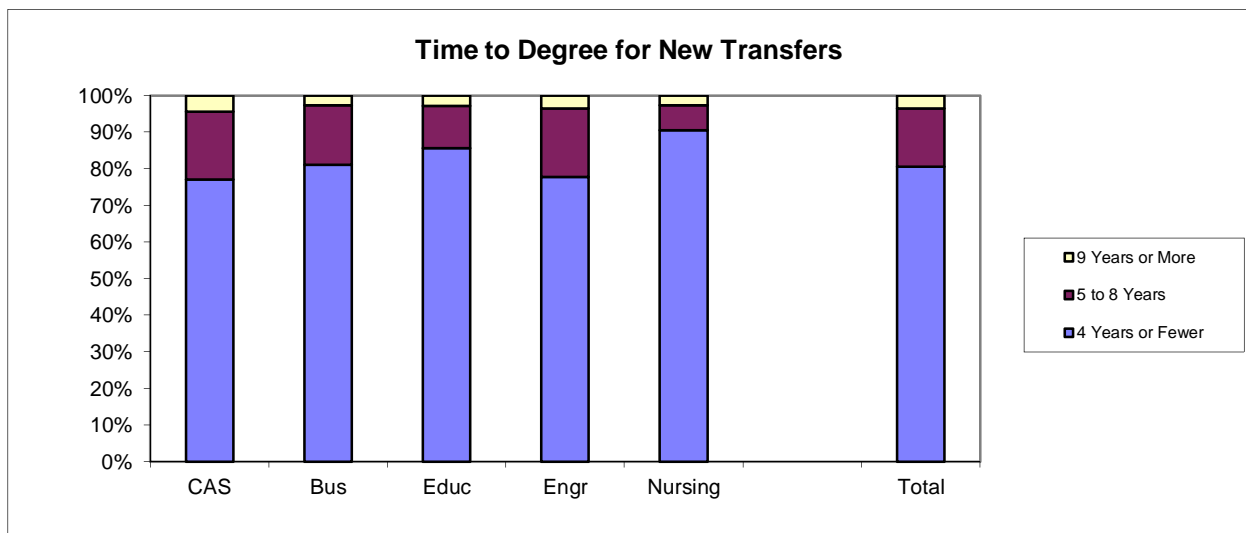
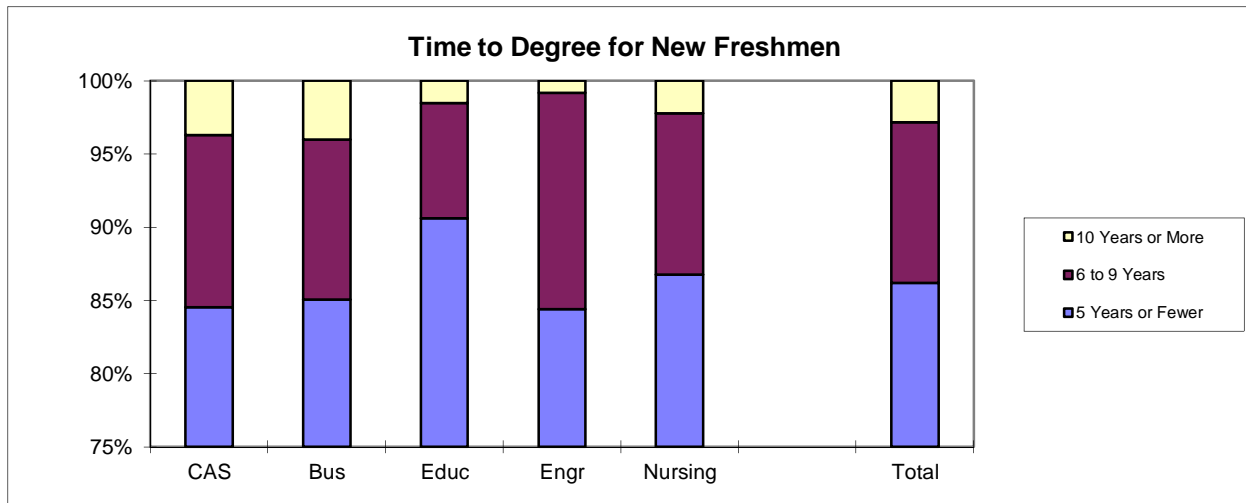
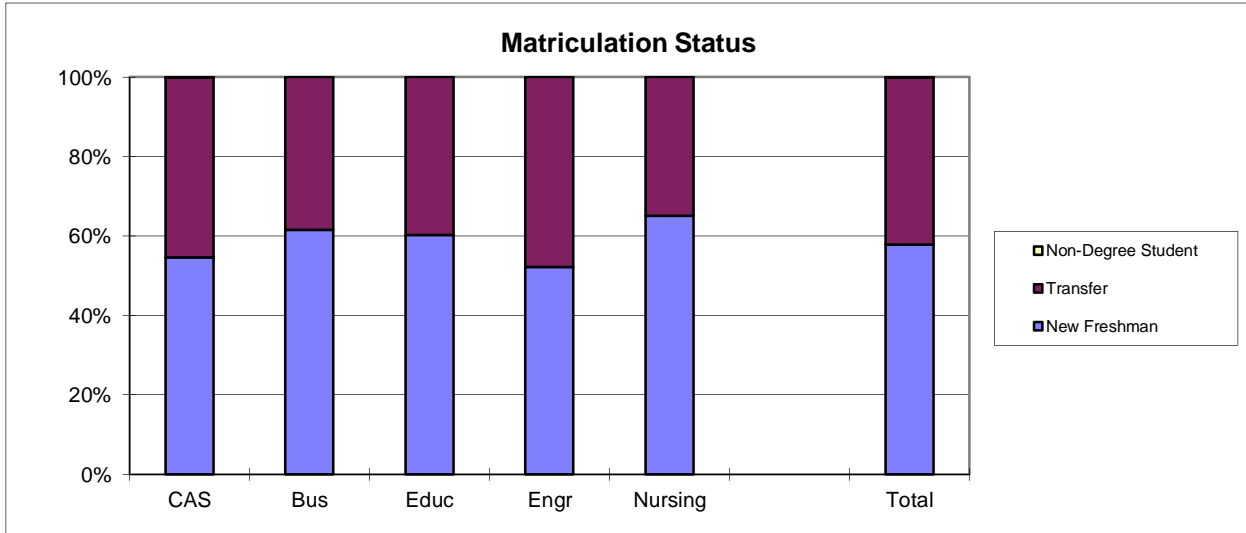
School Detail		All One Year Out Survey Respondents					
		CAS	BUS	EDU	ENG	NUR	Total
Total		156	93	96	39	54	438
Female		59.0%	50.5%	83.3%	10.3%	87.0%	61.6%
Male		41.0%	49.5%	16.7%	89.7%	13.0%	38.4%
Missing Data		0.0%	0.0%	0.0%	0.0%	0.0%	0.0%
White, Non-Hispanic		67.9%	81.7%	76.0%	84.6%	81.5%	75.8%
Black, Non-Hispanic		8.3%	3.2%	5.2%	0.0%	0.0%	4.8%
Asian/Pacific Islander		0.0%	0.0%	1.0%	0.0%	0.0%	0.2%
American Indian/Alaskan Native		0.0%	0.0%	0.0%	0.0%	0.0%	0.0%
Hispanic		3.2%	1.1%	5.2%	2.6%	1.9%	3.0%
Non-Resident Alien		0.0%	0.0%	0.0%	2.6%	0.0%	0.2%
Missing Data		20.5%	14.0%	12.5%	12.8%	16.7%	16.2%
Age at Graduation							
range		20 to 55	21 to 54	21 to 49	21 to 36	21 to 52	20 to 55
median		22.5	23.0	22.5	23.0	22.0	23.0
Bachelor of Science		62.2%	75.3%	86.5%	100.0%	100.0%	78.3%
Bachelor of Music		1.3%	0.0%	0.0%	0.0%	0.0%	0.5%
Bachelor of Arts		25.6%	0.0%	13.5%	0.0%	0.0%	12.1%
Bachelor of Fine Arts		1.9%	0.0%	0.0%	0.0%	0.0%	0.7%
Bachelor of Sci in Accountancy		0.0%	24.7%	0.0%	0.0%	0.0%	5.3%
Bachelor of Liberal Studies		1.3%	0.0%	0.0%	0.0%	0.0%	0.5%
Bachelor of Social Work		7.7%	0.0%	0.0%	0.0%	0.0%	2.7%
Missing Data		0.0%	0.0%	0.0%	0.0%	0.0%	0.0%
Graduated Spring 2012		70.5%	61.3%	79.2%	61.5%	70.4%	69.6%
Graduated Summer 2012		9.0%	15.1%	9.4%	5.1%	0.0%	8.9%
Graduated Fall 2012		20.5%	23.7%	11.5%	33.3%	29.6%	21.5%
Missing Data		0.0%	0.0%	0.0%	0.0%	0.0%	0.0%
Matriculated as a New Freshman		53.2%	63.4%	58.3%	61.5%	68.5%	59.1%
Matriculated as a Transfer		44.9%	33.3%	40.6%	38.5%	31.5%	39.3%
Matriculated as a Non-Degree Student		0.0%	0.0%	0.0%	0.0%	0.0%	0.0%
Missing Data		1.9%	3.2%	1.0%	0.0%	0.0%	1.6%
Time to Degree for New Freshmen							
3 Years or Fewer		4.8%	5.1%	3.6%	4.2%	5.4%	4.6%
4 Years		65.1%	71.2%	69.6%	54.2%	73.0%	67.6%
5 Years		19.3%	15.3%	25.0%	33.3%	13.5%	20.1%
6 Years		3.6%	1.7%	0.0%	4.2%	0.0%	1.9%
7 Years		1.2%	1.7%	0.0%	4.2%	0.0%	1.2%
8 Years		2.4%	1.7%	0.0%	0.0%	2.7%	1.5%
9 Years		1.2%	1.7%	1.8%	0.0%	0.0%	1.2%
10 Years		0.0%	0.0%	0.0%	0.0%	2.7%	0.4%
11 Years or More		2.4%	1.7%	0.0%	0.0%	2.7%	1.5%
Missing Data		0.0%	0.0%	0.0%	0.0%	0.0%	0.0%
Time to Degree for Transfers							
2 or Fewer Years		31.4%	35.5%	25.6%	26.7%	52.9%	32.6%
3 Years		35.7%	32.3%	35.9%	20.0%	23.5%	32.6%
4 Years		17.1%	19.4%	20.5%	20.0%	17.6%	18.6%
5 Years		10.0%	6.5%	7.7%	20.0%	5.9%	9.3%
6 Years		2.9%	6.5%	5.1%	0.0%	0.0%	3.5%
7 Years		0.0%	0.0%	2.6%	6.7%	0.0%	1.2%
8 Years		0.0%	0.0%	2.6%	6.7%	0.0%	1.2%
9 Years		0.0%	0.0%	0.0%	0.0%	0.0%	0.0%
10 Years or More		1.4%	0.0%	0.0%	0.0%	0.0%	0.6%
Missing Data		0.0%	0.0%	0.0%	0.0%	0.0%	0.0%
Graduating GPA (4 point scale)							
Mean		3.260	3.217	3.521	3.123	3.356	3.307
Std Dev		0.439	0.444	0.376	0.423	0.349	0.432

2012 Baccalaureate Recipients Profile



2012 Baccalaureate Recipients

Profile, cont.



Southern Illinois University Edwardsville
Survey of 2012 Baccalaureate Graduates -- One Year Out
Survey Responses -- Part I
Employment Questions

School Detail	CAS	BUS	EDU	ENG	NUR	Total
Number of Survey Respondents *	156	93	96	39	54	438
1. Number Employed:						
Full-time	52.9%	84.9%	58.3%	89.7%	98.1%	69.8%
Part-time	25.8%	6.5%	25.0%	5.1%	1.9%	16.7%
Not, but Seeking	9.7%	5.4%	8.3%	5.1%	0.0%	6.9%
Not, not Seeking	11.6%	3.2%	8.3%	0.0%	0.0%	6.6%
Number Responding	155	93	96	39	54	437
The remaining questions in Part I were to be answered only by respondents who were employed full-time or part-time.						
	122	85	80	37	54	378
2. Place of Employment						
Illinois	66.1%	46.3%	79.5%	44.1%	56.5%	61.1%
Missouri	22.3%	48.8%	16.7%	52.9%	32.6%	31.4%
Other	11.6%	5.0%	3.8%	2.9%	10.9%	7.4%
Number Responding	112	80	78	34	46	350
3. Classification of Primary Employer						
Self-Employed or Private Practice	1.6%	4.7%	3.8%	0.0%	0.0%	2.4%
Business (Industrial, Commercial or Service)	37.7%	71.8%	13.8%	52.8%	1.9%	36.6%
Professional Firm (e.g., Engineering, Law)	3.3%	10.6%	5.0%	41.7%	0.0%	8.5%
College or University	8.2%	3.5%	12.5%	2.8%	0.0%	6.4%
Elementary/Secondary School	10.7%	0.0%	45.0%	0.0%	0.0%	13.0%
Health Agency (e.g. Hospital, Clinic)	6.6%	1.2%	8.8%	0.0%	90.7%	17.2%
Federal, State, or Local Government	9.8%	5.9%	1.3%	2.8%	0.0%	5.0%
Armed Services	3.3%	0.0%	2.5%	0.0%	3.7%	2.1%
NonProfit (Non-Government)	7.4%	0.0%	3.8%	0.0%	3.7%	3.7%
Other	11.5%	2.4%	3.8%	0.0%	0.0%	5.0%
Number Responding	122	85	80	36	54	377
4. Job Satisfaction						
Very Satisfied	24.0%	41.2%	28.8%	45.9%	50.0%	34.7%
Satisfied	27.3%	24.7%	38.8%	29.7%	40.7%	31.3%
Somewhat Satisfied	26.4%	21.2%	23.8%	16.2%	7.4%	21.0%
Somewhat Dissatisfied	7.4%	2.4%	1.3%	0.0%	1.9%	3.4%
Dissatisfied	10.7%	4.7%	5.0%	5.4%	0.0%	6.1%
Very Dissatisfied	4.1%	5.9%	2.5%	2.7%	0.0%	3.4%
Number Responding	121	85	80	37	54	377
5. Job in Field?						
Closely Related	38.5%	54.1%	52.5%	56.8%	90.7%	54.2%
Related	18.0%	31.8%	28.8%	37.8%	9.3%	24.1%
Unrelated (choice unknown)	1.6%	0.0%	0.0%	0.0%	0.0%	0.5%
Unrelated (by choice)	13.1%	3.5%	7.5%	0.0%	0.0%	6.6%
Unrelated (not by choice)	28.7%	10.6%	11.3%	5.4%	0.0%	14.6%
Number Responding	122	85	80	37	54	378
6. Timing of Securing First Job After Degree						
Held the Same Job While Enrolled	22.3%	12.9%	13.8%	21.6%	13.0%	17.0%
Secured Job by Graduation	12.4%	31.8%	8.8%	45.9%	55.6%	25.5%
Secured Job After Graduation (timing unknown)	1.7%	0.0%	2.5%	0.0%	1.9%	1.3%
Less than 1 Month After Graduation	8.3%	11.8%	7.5%	8.1%	3.7%	8.2%
1 to 3 Months After Graduation	11.6%	15.3%	35.0%	10.8%	11.1%	17.2%
3 to 6 Months After Graduation	18.2%	16.5%	13.8%	8.1%	13.0%	15.1%
6 to 9 Months After Graduation	21.5%	5.9%	7.5%	2.7%	1.9%	10.3%
More than 9 Months After Graduation	4.1%	5.9%	11.3%	2.7%	0.0%	5.3%
Number Responding	121	85	80	37	54	377

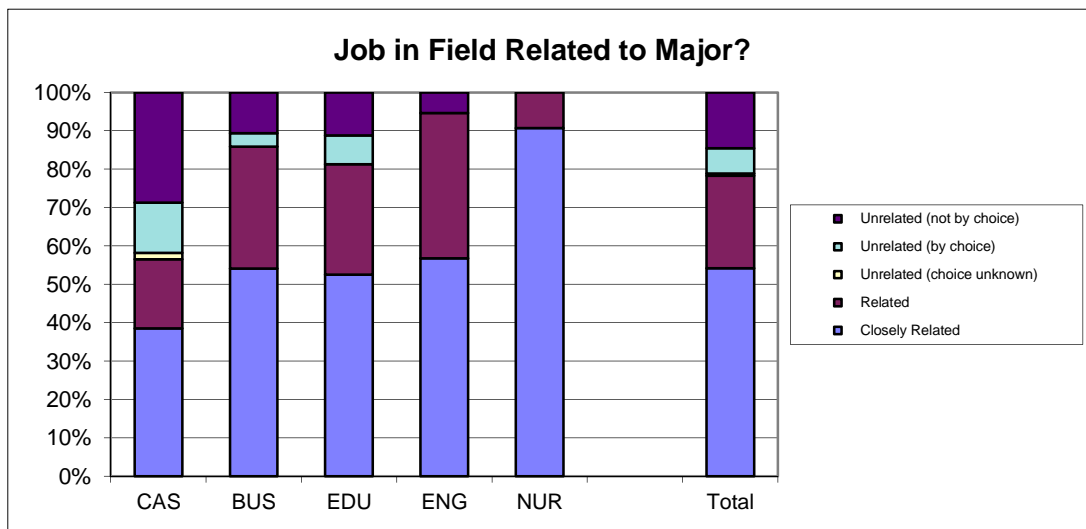
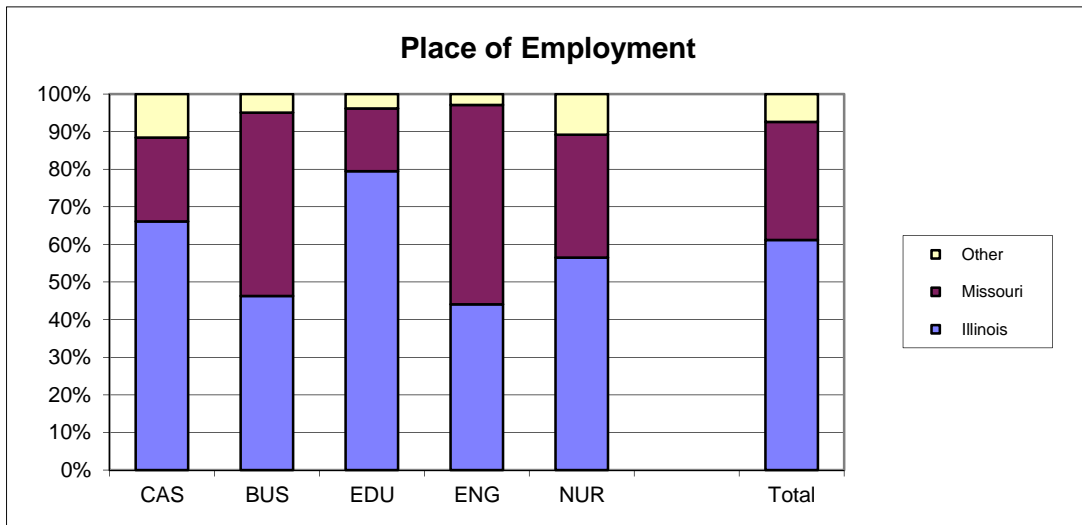
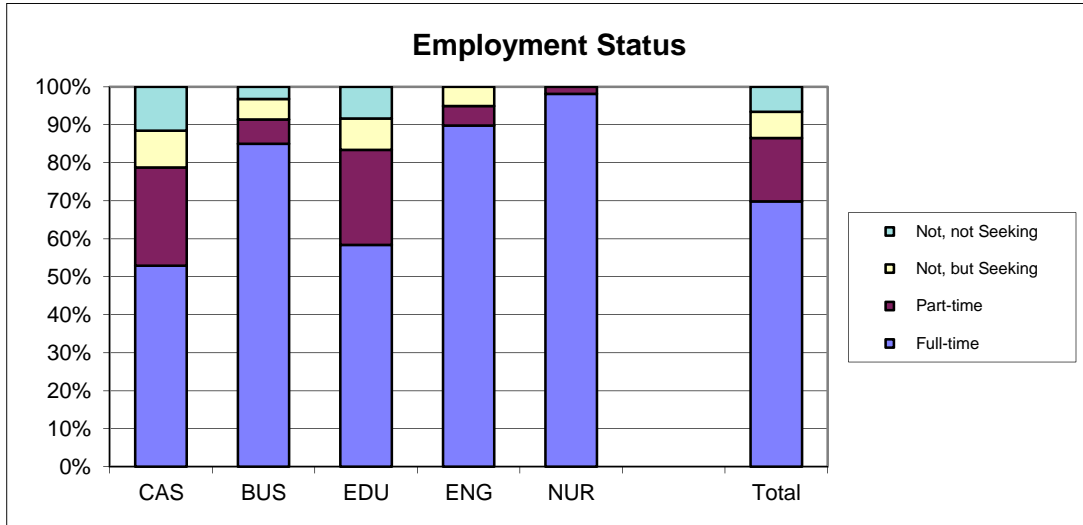
Southern Illinois University Edwardsville
Survey of 2012 Baccalaureate Graduates -- One Year Out
Survey Responses -- Part I
Employment Questions

School Detail, cont.	CAS	BUS	EDU	ENG	NUR	Total
7. Annual Earned Income in Current Job Before Taxes						
Employed Full-Time						
Less Than \$15,000	1.4%	2.8%	5.9%	0.0%	0.0%	2.2%
\$15,000 to 19,999	6.8%	0.0%	13.7%	0.0%	0.0%	4.3%
\$20,000 to \$24,999	12.2%	4.2%	21.6%	0.0%	0.0%	8.2%
\$25,000 to \$29,999	21.6%	18.1%	5.9%	0.0%	0.0%	11.5%
\$30,000 to \$34,999	20.3%	18.1%	29.4%	3.3%	5.8%	16.8%
\$35,000 to \$39,999	8.1%	12.5%	17.6%	3.3%	9.6%	10.8%
\$40,000 or More	29.7%	44.4%	5.9%	93.3%	84.6%	46.2%
Number Responding	74	72	51	30	52	279
Mean Salary	\$33,544	\$39,234	\$27,529	\$53,937	\$45,539	\$38,344
Employed Part-Time						
Less Than \$5,000	12.1%	16.7%	20.0%	0.0%	0.0%	14.5%
5,000 to \$9,999	21.2%	0.0%	15.0%	50.0%	0.0%	17.7%
\$10,000 to \$14,999	24.2%	50.0%	25.0%	0.0%	0.0%	25.8%
\$15,000 to \$19,999	21.2%	16.7%	15.0%	0.0%	0.0%	17.7%
\$20,000 or More	21.2%	16.7%	25.0%	50.0%	100.0%	24.2%
Number Responding	33	6	20	2	1	62
Mean Salary	\$13,904	\$14,602	\$12,455	\$31,750	\$40,000	\$14,501
8. Bachelor's Degree Preparation for Job						
Very Well	17.9%	16.5%	21.3%	18.9%	38.9%	21.4%
Well	23.9%	36.5%	30.0%	37.8%	38.9%	31.6%
Adequately	35.9%	37.6%	37.5%	32.4%	18.5%	33.8%
Inadequately	10.3%	7.1%	7.5%	5.4%	3.7%	7.5%
Poorly	6.8%	0.0%	2.5%	2.7%	0.0%	2.9%
Very Poorly	5.1%	2.4%	1.3%	2.7%	0.0%	2.7%
Number Responding	117	85	80	37	54	373
9a. Primary Occupation						
Management	6.0%	10.8%	3.8%	5.7%	0.0%	5.7%
Business Operations	3.4%	24.1%	0.0%	2.9%	0.0%	6.8%
Financial Specialists	3.4%	21.7%	1.3%	0.0%	0.0%	6.3%
Computer Specialists	2.6%	13.3%	0.0%	2.9%	0.0%	4.1%
Mathematical Scientists and Technicians	1.7%	0.0%	0.0%	0.0%	0.0%	0.5%
Architects, Surveyors, and Cartographers	0.9%	0.0%	1.3%	2.9%	0.0%	0.8%
Engineers and Related Technicians	1.7%	0.0%	1.3%	80.0%	0.0%	8.4%
Life & Physical Scientists, and Technicians	5.1%	0.0%	0.0%	0.0%	0.0%	1.6%
Social Scientists	1.7%	0.0%	2.6%	0.0%	0.0%	1.1%
Health: Doctors	0.9%	0.0%	0.0%	0.0%	0.0%	0.3%
Health: Registered Nurses	0.0%	0.0%	0.0%	0.0%	100.0%	14.7%
Health: Therapists	0.0%	0.0%	1.3%	0.0%	0.0%	0.3%
Health: Oth Practitnrs, Prof.s, & Suppt Wkrs	3.4%	0.0%	7.7%	0.0%	0.0%	2.7%
Community & Social Service	8.5%	0.0%	3.8%	0.0%	0.0%	3.5%
Legal: Attorneys/Judges	0.0%	1.2%	0.0%	0.0%	0.0%	0.3%
Legal: Legal Support Workers	1.7%	0.0%	1.3%	0.0%	0.0%	0.8%
Education: Early Childhood Teachers	0.0%	0.0%	11.5%	0.0%	0.0%	2.5%
Education: Elementary School Teachers	2.6%	0.0%	9.0%	0.0%	0.0%	2.7%
Education: Middle School Teachers	1.7%	0.0%	10.3%	0.0%	0.0%	2.7%
Education: Secondary School Teachers	6.0%	0.0%	1.3%	0.0%	0.0%	2.2%
Education: Special Education Teachers	0.0%	0.0%	10.3%	0.0%	0.0%	2.2%
Education: Other, except Administrators	4.3%	1.2%	12.8%	0.0%	0.0%	4.4%
continued						

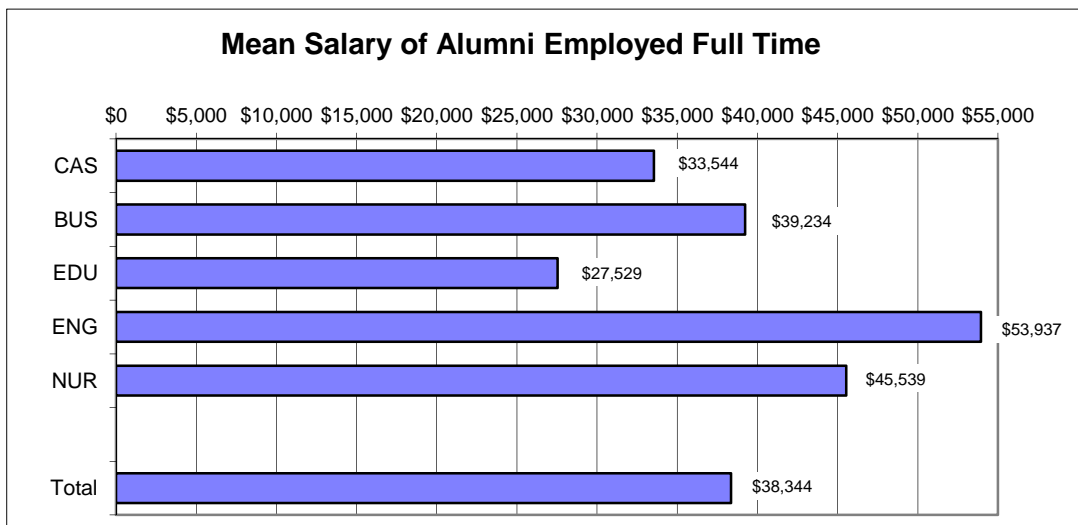
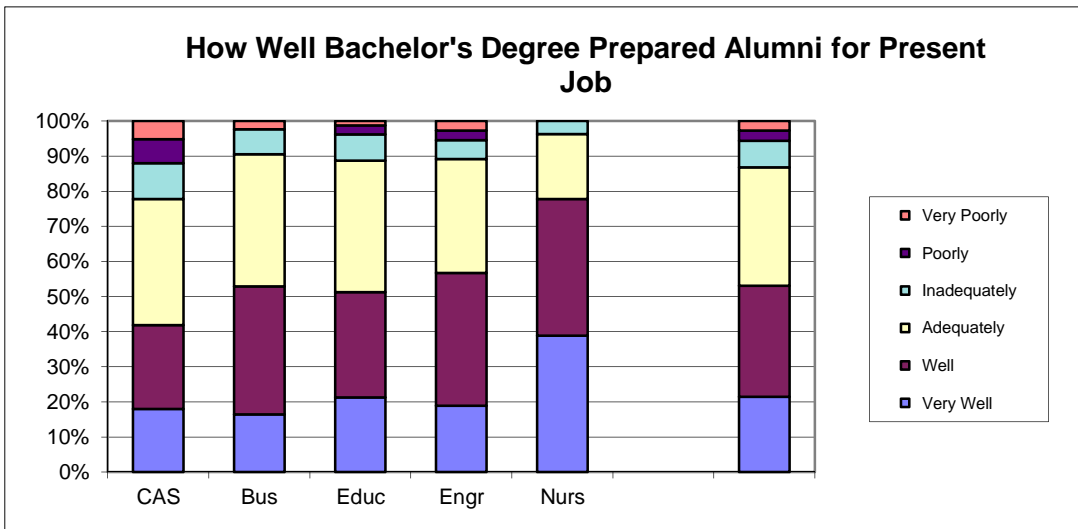
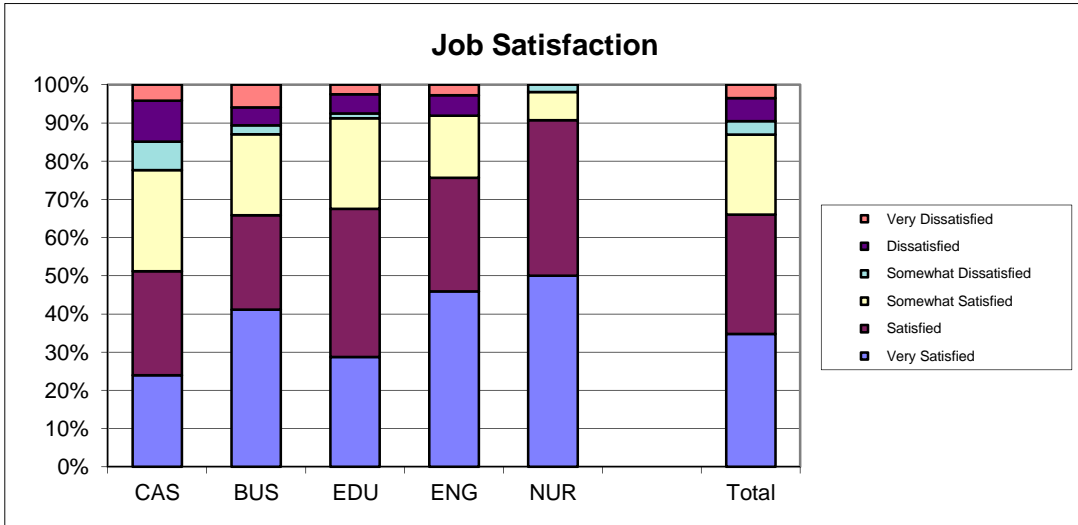
Southern Illinois University Edwardsville
Survey of 2012 Baccalaureate Graduates -- One Year Out
Survey Responses -- Part I
Employment Questions

School Detail, cont.	CAS	BUS	EDU	ENG	NUR	Total
9a. continuation of Primary Occupation						
Library Occupations	0.9%	0.0%	0.0%	0.0%	0.0%	0.3%
Art and Design Workers	2.6%	0.0%	0.0%	0.0%	0.0%	0.8%
Entertainment, Performers, Sports & Related	1.7%	0.0%	0.0%	0.0%	0.0%	0.5%
Media and Communication Workers	1.7%	1.2%	0.0%	0.0%	0.0%	0.8%
Sales	13.7%	10.8%	7.7%	0.0%	0.0%	8.4%
Office & Administration	4.3%	12.0%	5.1%	2.9%	0.0%	5.4%
Protective Services	7.7%	0.0%	0.0%	0.0%	0.0%	2.5%
Food Preparation & Serving	3.4%	1.2%	0.0%	0.0%	0.0%	1.4%
Buildings & Grounds Maintenance	0.0%	0.0%	0.0%	0.0%	0.0%	0.0%
Personal Care and Service	1.7%	1.2%	3.8%	0.0%	0.0%	1.6%
Farming, Fishing, and Forestry	0.0%	0.0%	0.0%	0.0%	0.0%	0.0%
Construction & Extractive	0.0%	0.0%	0.0%	2.9%	0.0%	0.3%
Installation, Maintenance, & Repair	0.0%	0.0%	0.0%	0.0%	0.0%	0.0%
Production	1.7%	0.0%	1.3%	0.0%	0.0%	0.8%
Transportation and Material Moving	1.7%	0.0%	0.0%	0.0%	0.0%	0.5%
Military	3.4%	1.2%	2.6%	0.0%	0.0%	1.9%
Number Responding	117	83	78	35	54	367
9b. Industry						
Agriculture, Forestry, and Fishing	0.9%	0.0%	0.0%	0.0%	0.0%	0.3%
Mining	0.0%	1.3%	0.0%	7.7%	0.0%	1.0%
Utilities	0.9%	3.9%	0.0%	3.8%	0.0%	1.6%
Construction	0.9%	0.0%	1.5%	30.8%	0.0%	3.2%
Manufacturing	4.7%	15.8%	3.1%	15.4%	0.0%	7.3%
Wholesale Trade	1.9%	3.9%	0.0%	0.0%	0.0%	1.6%
Retail Trade	15.1%	9.2%	6.2%	0.0%	0.0%	8.6%
Transportation	3.8%	6.6%	0.0%	3.8%	0.0%	3.2%
Information	1.9%	1.3%	0.0%	0.0%	0.0%	1.0%
Finance & Insurance	2.8%	21.1%	3.1%	0.0%	0.0%	6.7%
Real Estate & Rental & Leasing	0.0%	0.0%	0.0%	0.0%	0.0%	0.0%
Professional, Scientific & Technical Services	12.3%	9.2%	1.5%	30.8%	0.0%	9.2%
Management of Companies & Enterprises	0.0%	3.9%	1.5%	0.0%	0.0%	1.3%
Admin & Suppt, Waste Mgmt & Remedtn Svcs	0.0%	1.3%	0.0%	0.0%	0.0%	0.3%
Educational Services	16.0%	2.6%	58.5%	0.0%	0.0%	18.2%
Health Care & Social Assistance	15.1%	2.6%	16.9%	0.0%	100.0%	22.3%
Arts, Entertainment & Recreation	6.6%	0.0%	1.5%	0.0%	0.0%	2.5%
Accommodations & Food Services	2.8%	2.6%	1.5%	3.8%	0.0%	2.2%
Other Services (except Public Admin)	11.3%	11.8%	4.6%	3.8%	0.0%	8.0%
Public Administration	2.8%	2.6%	0.0%	0.0%	0.0%	1.6%
Number Responding	106	76	65	26	41	314

2012 Baccalaureate Graduates One Year Out Employment



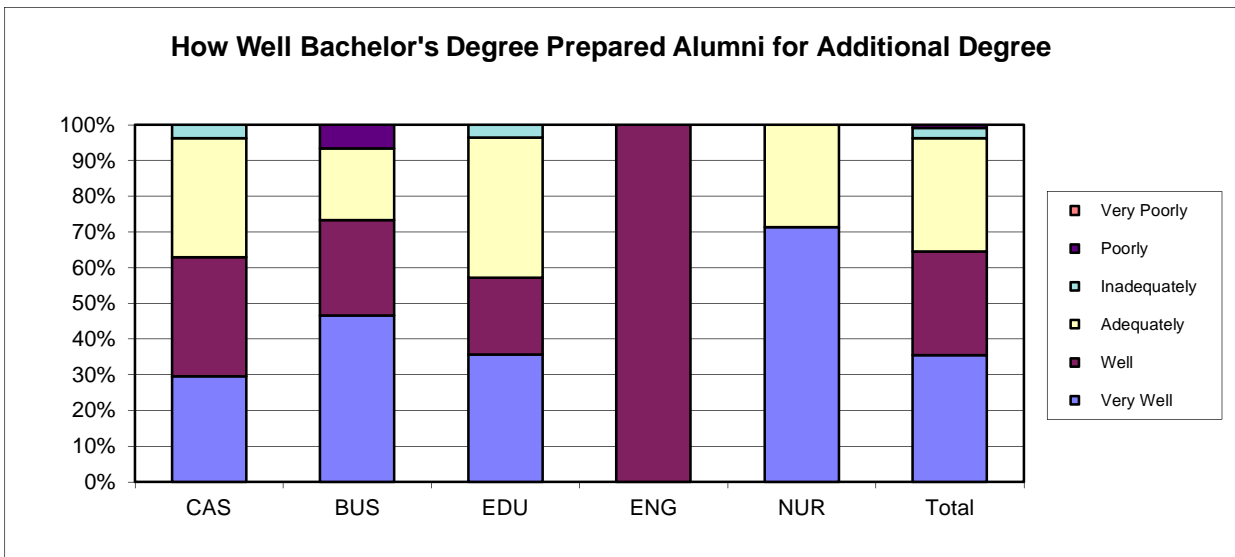
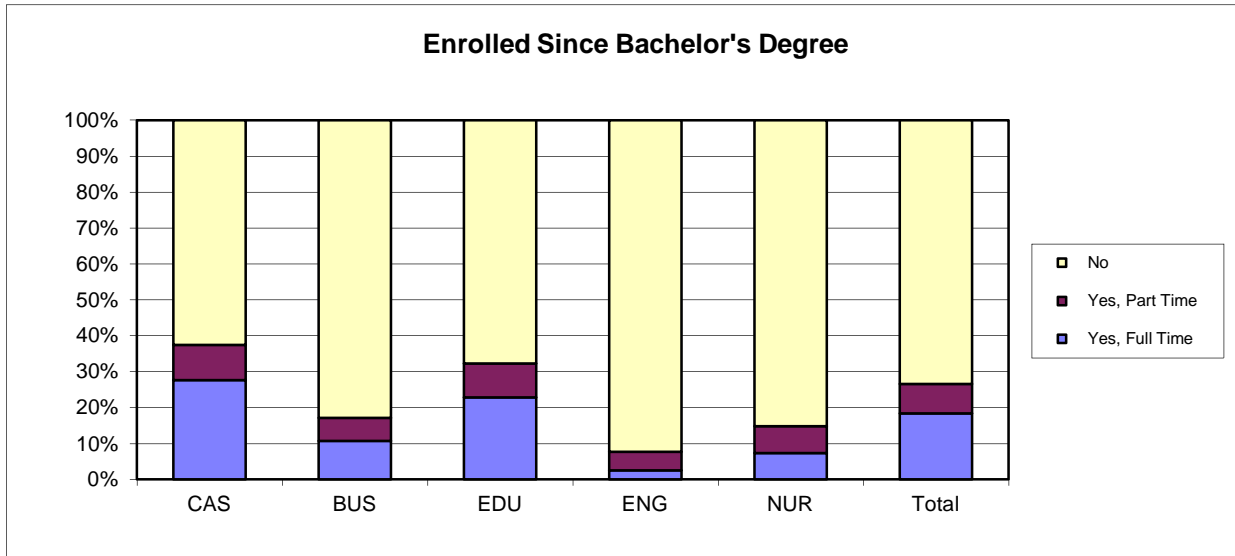
2012 Baccalaureate Graduates One Year Out *Employment, cont.*



Southern Illinois University Edwardsville
Survey of 2012 Baccalaureate Graduates -- One Year Out
Survey Responses -- Part II
Education Questions

School Detail	CAS	BUS	EDU	ENG	NUR	Total
Number of Survey Respondents	156	93	96	39	54	438
10. Enrolled in College or University Since Degree?						
Yes, Full Time	27.7%	10.8%	22.9%	2.6%	7.4%	18.3%
Yes, Part Time	9.7%	6.5%	9.4%	5.1%	7.4%	8.2%
No	62.6%	82.8%	67.7%	92.3%	85.2%	73.5%
Number Responding	155	93	96	39	54	437
11. Pursuing or Have Completed an Additional Degree						
Yes	100.0%	100.0%	100.0%	100.0%	100.0%	100.0%
No	0.0%	0.0%	0.0%	0.0%	0.0%	0.0%
Number Responding	56	15	28	3	7	109
The remaining questions in Part II were to be answered only by respondents who were pursuing or had completed another degree.						
	56	15	28	3	7	109
11b. Pursuing or Completed Which Degree?						
Associate's	3.6%	0.0%	0.0%	0.0%	0.0%	1.9%
Second Bachelor's	1.8%	6.7%	7.1%	0.0%	0.0%	3.7%
Academic Master's (MA, MS, MEd, etc)	38.2%	26.7%	60.7%	66.7%	0.0%	40.7%
Prof. Master's or Ed Specialist	25.5%	60.0%	14.3%	0.0%	28.6%	26.9%
Medicine (MD, OD)	0.0%	0.0%	0.0%	0.0%	0.0%	0.0%
Health Prof. (dentistry, pharmacy, etc.)	16.4%	0.0%	14.3%	0.0%	0.0%	12.0%
Theology/Divinity	1.8%	0.0%	0.0%	0.0%	0.0%	0.9%
Law (LLB, JD)	5.5%	6.7%	0.0%	0.0%	0.0%	3.7%
Doctorate (PhD, EdD, DA, DBA, etc.)	3.6%	0.0%	0.0%	33.3%	14.3%	3.7%
Other	3.6%	0.0%	3.6%	0.0%	57.1%	6.5%
Number Responding	55	15	28	3	7	108
12. How Well Bach. Degree Prepared You for Additional Degree						
Very Well	29.6%	46.7%	35.7%	0.0%	71.4%	35.5%
Well	33.3%	26.7%	21.4%	100.0%	0.0%	29.0%
Adequately	33.3%	20.0%	39.3%	0.0%	28.6%	31.8%
Inadequately	3.7%	0.0%	3.6%	0.0%	0.0%	2.8%
Poorly	0.0%	6.7%	0.0%	0.0%	0.0%	0.9%
Very Poorly	0.0%	0.0%	0.0%	0.0%	0.0%	0.0%
Number Responding	54	15	28	3	7	107
2/6/2014						

2012 Baccalaureate Graduates One Year Out Additional Education

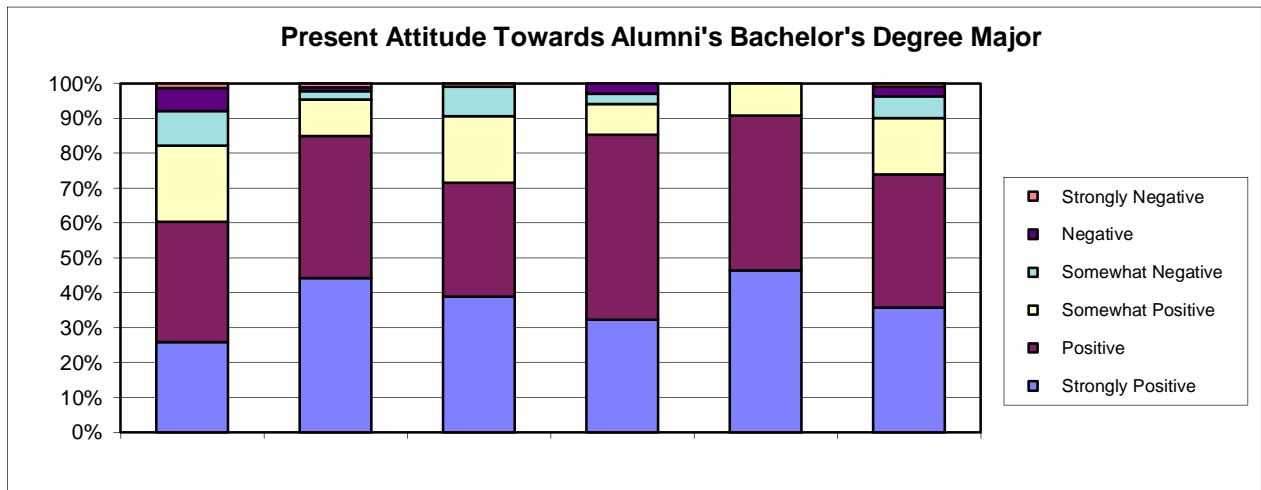
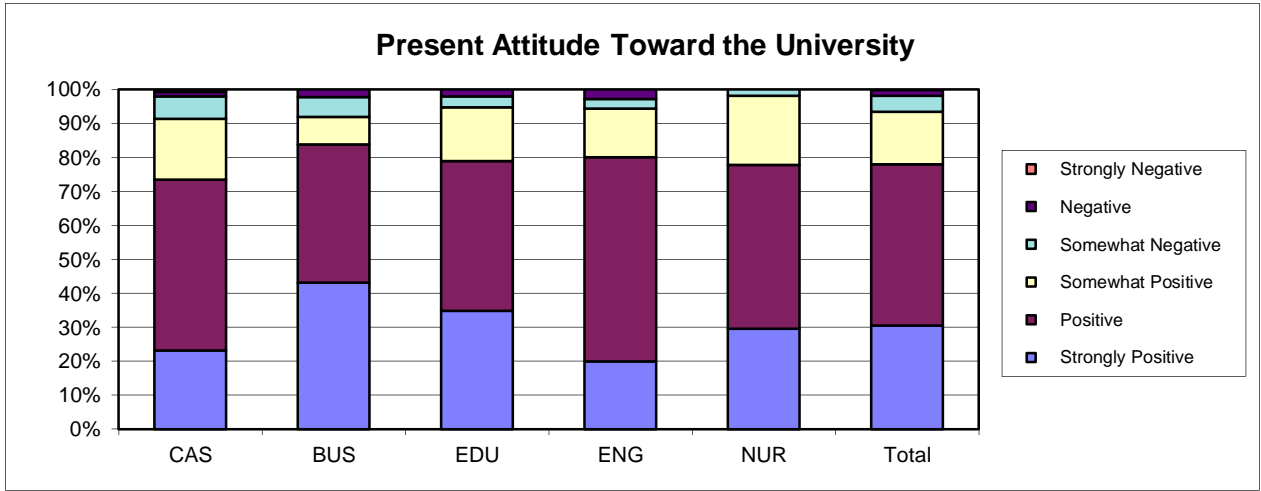


Southern Illinois University Edwardsville
Survey of 2012 Baccalaureate Graduates -- One Year Out
Survey Responses -- Part III
Satisfaction Questions

School Detail	CAS	BUS	EDU	ENG	NUR	Total
Number of Survey Respondents	156	93	96	39	54	438
13. Present Attitude Towards the University						
Strongly Positive	23.2%	43.0%	34.7%	20.0%	29.6%	30.4%
Positive	50.3%	40.7%	44.2%	60.0%	48.1%	47.5%
Somewhat Positive	17.9%	8.1%	15.8%	14.3%	20.4%	15.4%
Somewhat Negative	6.6%	5.8%	3.2%	2.9%	1.9%	4.8%
Negative	1.3%	2.3%	2.1%	2.9%	0.0%	1.7%
Strongly Negative	0.7%	0.0%	0.0%	0.0%	0.0%	0.2%
Number Responding	151	86	95	35	54	421
14. Present Attitude Towards your Bachelor's Degree Major						
Strongly Positive	25.8%	44.2%	38.9%	32.4%	46.3%	35.7%
Positive	34.4%	40.7%	32.6%	52.9%	44.4%	38.1%
Somewhat Positive	21.9%	10.5%	18.9%	8.8%	9.3%	16.2%
Somewhat Negative	9.9%	2.3%	8.4%	2.9%	0.0%	6.2%
Negative	6.6%	1.2%	0.0%	2.9%	0.0%	2.9%
Strongly Negative	1.3%	1.2%	1.1%	0.0%	0.0%	1.0%
Number Responding	151	86	95	34	54	420

2/7/2014

2012 Baccalaureate Graduates One Year Out Satisfaction



Southern Illinois University Edwardsville
Survey of 2012 Baccalaureate Graduates -- One Year Out
Survey Responses -- Part IV
Educational Practices Questions

School Detail	CAS	BUS	EDU	ENG	NUR	Total
Number of Survey Respondents	156	93	96	39	54	438
15. Faculty in Major Were Accessible Outside of Class						
Very Often	47.7%	37.0%	44.8%	35.9%	40.7%	42.9%
Often	40.5%	50.0%	46.9%	56.4%	48.1%	46.3%
Sometimes	11.1%	12.0%	7.3%	7.7%	9.3%	9.9%
Infrequently	0.7%	1.1%	1.0%	0.0%	1.9%	0.9%
Never	0.0%	0.0%	0.0%	0.0%	0.0%	0.0%
Number Responding	153	92	96	39	54	434
16. In Major, Student was Expected to Work Cooperatively with Other Students						
Very Often	34.0%	73.9%	52.1%	33.3%	53.7%	48.8%
Often	37.3%	21.7%	37.5%	53.8%	42.6%	36.2%
Sometimes	25.5%	4.3%	9.4%	10.3%	1.9%	13.1%
Infrequently	2.6%	0.0%	1.0%	2.6%	1.9%	1.6%
Never	0.7%	0.0%	0.0%	0.0%	0.0%	0.2%
Number Responding	153	92	96	39	54	434
17. In Major, Faculty Encouraged Student to Challenge Ideas (student's, other students, and in readings & materials)						
Very Often	30.7%	25.0%	40.6%	17.9%	27.8%	30.2%
Often	38.6%	41.3%	35.4%	41.0%	46.3%	39.6%
Sometimes	22.9%	28.3%	20.8%	25.6%	22.2%	23.7%
Infrequently	7.2%	3.3%	2.1%	10.3%	3.7%	5.1%
Never	0.7%	2.2%	1.0%	5.1%	0.0%	1.4%
Number Responding	153	92	96	39	54	434
18. In Major, Faculty Used Appropriate Teaching Activities to Help Student Learn						
Very Often	32.7%	32.6%	45.8%	17.9%	31.5%	34.1%
Often	45.8%	52.2%	32.3%	59.0%	48.1%	45.6%
Sometimes	19.0%	14.1%	18.8%	17.9%	18.5%	17.7%
Infrequently	2.6%	1.1%	3.1%	5.1%	1.9%	2.5%
Never	0.0%	0.0%	0.0%	0.0%	0.0%	0.0%
Number Responding	153	92	96	39	54	434
19. In Major, Faculty had High Expectations for Quality Of Student Work						
Very Often	34.6%	45.7%	51.0%	35.9%	51.9%	42.9%
Often	48.4%	38.0%	38.5%	51.3%	38.9%	43.1%
Sometimes	13.7%	9.8%	9.4%	7.7%	9.3%	10.8%
Infrequently	2.6%	4.3%	1.0%	5.1%	0.0%	2.5%
Never	0.7%	2.2%	0.0%	0.0%	0.0%	0.7%
Number Responding	153	92	96	39	54	434
20. In Major, Faculty Provided Timely Feedback						
Very Often	28.1%	33.7%	42.7%	23.1%	29.6%	32.3%
Often	47.1%	47.8%	35.4%	59.0%	53.7%	46.5%
Sometimes	22.2%	16.3%	18.8%	15.4%	14.8%	18.7%
Infrequently	2.6%	2.2%	3.1%	2.6%	1.9%	2.5%
Never	0.0%	0.0%	0.0%	0.0%	0.0%	0.0%
Number Responding	153	92	96	39	54	434

Southern Illinois University Edwardsville
Survey of 2012 Baccalaureate Graduates -- One Year Out
Survey Responses -- Part IV
Educational Practices Questions

School Detail, cont.	CAS	BUS	EDU	ENG	NUR	Total
21. In Major, Faculty Encouraged Students' Questions and Discussion in Class						
Very Often	48.4%	50.0%	55.8%	30.8%	42.6%	48.0%
Often	31.4%	38.0%	29.5%	51.3%	48.1%	36.3%
Sometimes	17.6%	12.0%	12.6%	17.9%	9.3%	14.3%
Infrequently	2.6%	0.0%	1.1%	0.0%	0.0%	1.2%
Never	0.0%	0.0%	1.1%	0.0%	0.0%	0.2%
Number Responding	153	92	95	39	54	433
22. In Major, Student Spent Necessary Time and Energy to Come to Class Prepared						
Very Often	47.7%	52.2%	55.2%	28.2%	53.7%	49.3%
Often	40.5%	30.4%	40.6%	53.8%	38.9%	39.4%
Sometimes	11.8%	16.3%	4.2%	12.8%	7.4%	10.6%
Infrequently	0.0%	1.1%	0.0%	5.1%	0.0%	0.7%
Never	0.0%	0.0%	0.0%	0.0%	0.0%	0.0%
Number Responding	153	92	96	39	54	434
2/7/2014						

Southern Illinois University Edwardsville
Survey of 2012 Baccalaureate Graduates -- One Year Out
Survey Responses -- Part V
Program Quality Questions

School Detail	CAS	BUS	EDU	ENG	NUR	Total
Number of Survey Respondents	156	93	96	39	54	438
23A. Quality of Major in Offering						
Sufficient Courses						
Excellent	35.9%	47.8%	43.8%	20.5%	57.4%	41.5%
Good	41.2%	43.5%	50.0%	51.3%	38.9%	44.2%
Fair	20.9%	6.5%	5.2%	25.6%	3.7%	12.7%
Poor	2.0%	2.2%	1.0%	2.6%	0.0%	1.6%
Number Responding	153	92	96	39	54	434
23B. Quality of Major in Offering						
Convenient Class Times						
Excellent	19.7%	38.0%	35.4%	10.3%	38.9%	28.6%
Good	53.9%	47.8%	50.0%	41.0%	44.4%	49.4%
Fair	20.4%	12.0%	12.5%	38.5%	16.7%	18.0%
Poor	5.9%	2.2%	2.1%	10.3%	0.0%	3.9%
Number Responding	152	92	96	39	54	433
23C. Quality of Major in Offering						
Logical Class Sequences						
Excellent	25.0%	43.5%	40.6%	15.8%	46.3%	34.3%
Good	52.6%	44.6%	49.0%	63.2%	35.2%	48.8%
Fair	17.1%	10.9%	9.4%	18.4%	18.5%	14.4%
Poor	5.3%	1.1%	1.0%	2.6%	0.0%	2.5%
Number Responding	152	92	96	38	54	432
24 Quality of Faculty in Major						
Excellent	45.1%	51.1%	50.0%	41.0%	43.4%	46.9%
Good	43.8%	44.4%	40.6%	43.6%	47.2%	43.6%
Fair	10.5%	4.4%	7.3%	12.8%	9.4%	8.6%
Poor	0.7%	0.0%	2.1%	2.6%	0.0%	0.9%
Number Responding	153	90	96	39	53	431
25 Grading Standards in Major Were:						
Too High	3.9%	4.3%	1.0%	0.0%	13.0%	4.1%
About Right	89.0%	89.1%	94.8%	94.9%	87.0%	90.6%
Too Low	7.1%	6.5%	4.2%	5.1%	0.0%	5.3%
Number Responding	154	92	96	39	54	435

2/7/2014

Southern Illinois University Edwardsville
Survey of 2012 Baccalaureate Graduates -- One Year Out
Survey Responses -- Part VI
Educational Effectiveness Questions

School Detail	CAS	BUS	EDU	ENG	NUR	Total
Number of Survey Respondents	156	93	96	39	54	438
26. Helpfulness of University Experiences in:						
A. Developing Critical Thinking Ability						
Extremely Helpful	24.8%	19.4%	18.8%	25.6%	25.9%	22.5%
Very Helpful	40.5%	46.2%	41.7%	43.6%	50.0%	43.4%
Moderately Helpful	29.4%	31.2%	34.4%	25.6%	24.1%	29.9%
Slightly Helpful	3.9%	3.2%	4.2%	0.0%	0.0%	3.0%
Not Helpful	1.3%	0.0%	1.0%	5.1%	0.0%	1.1%
Number Responding	153	93	96	39	54	435
B. Developing Sense of Ethics						
Extremely Helpful	19.7%	24.7%	16.7%	10.3%	22.2%	19.6%
Very Helpful	31.6%	36.6%	40.6%	46.2%	48.1%	38.0%
Moderately Helpful	30.9%	31.2%	33.3%	30.8%	20.4%	30.2%
Slightly Helpful	13.8%	4.3%	7.3%	2.6%	9.3%	8.8%
Not Helpful	3.9%	3.2%	2.1%	10.3%	0.0%	3.5%
Number Responding	152	93	96	39	54	434
C. Understanding People with Different Backgrounds, Habits, Values, Appearances and Abilities						
Extremely Helpful	32.5%	21.7%	26.3%	12.8%	31.5%	26.9%
Very Helpful	37.1%	43.5%	38.9%	30.8%	46.3%	39.4%
Moderately Helpful	19.2%	27.2%	26.3%	41.0%	16.7%	24.1%
Slightly Helpful	7.9%	3.3%	6.3%	5.1%	5.6%	6.0%
Not Helpful	3.3%	4.3%	2.1%	10.3%	0.0%	3.5%
Number Responding	151	92	95	39	54	431
D. Becoming a More Active Citizen						
Extremely Helpful	12.5%	6.5%	11.7%	7.7%	18.5%	11.3%
Very Helpful	21.1%	30.1%	28.7%	25.6%	38.9%	27.3%
Moderately Helpful	39.5%	37.6%	37.2%	38.5%	29.6%	37.3%
Slightly Helpful	21.1%	21.5%	12.8%	17.9%	13.0%	18.1%
Not Helpful	5.9%	4.3%	9.6%	10.3%	0.0%	6.0%
Number Responding	152	93	94	39	54	432
E. Improving Quality of Life (aside from financial benefits)						
Extremely Helpful	15.1%	11.8%	18.9%	10.3%	20.4%	15.5%
Very Helpful	26.3%	30.1%	36.8%	33.3%	50.0%	33.0%
Moderately Helpful	38.2%	40.9%	25.3%	33.3%	25.9%	33.9%
Slightly Helpful	14.5%	11.8%	12.6%	10.3%	3.7%	11.8%
Not Helpful	5.9%	5.4%	6.3%	12.8%	0.0%	5.8%
Number Responding	152	93	95	39	54	433
F. Developing Reasoning Skills						
Extremely Helpful	21.7%	17.2%	22.9%	25.6%	27.8%	22.1%
Very Helpful	44.1%	47.3%	37.5%	51.3%	46.3%	44.2%
Moderately Helpful	26.3%	29.0%	29.2%	20.5%	25.9%	27.0%
Slightly Helpful	5.9%	5.4%	10.4%	0.0%	0.0%	5.5%
Not Helpful	2.0%	1.1%	0.0%	2.6%	0.0%	1.2%
Number Responding	152	93	96	39	54	434

Southern Illinois University Edwardsville
Survey of 2012 Baccalaureate Graduates -- One Year Out
Survey Responses -- Part VI
Educational Effectiveness Questions

School Detail, cont.	CAS	BUS	EDU	ENG	NUR	Total
G. Viewing Problems from Different Perspectives						
Extremely Helpful	31.4%	24.7%	27.4%	20.5%	27.8%	27.6%
Very Helpful	38.6%	46.2%	37.9%	56.4%	42.6%	42.2%
Moderately Helpful	22.2%	22.6%	27.4%	17.9%	25.9%	23.5%
Slightly Helpful	7.8%	6.5%	7.4%	2.6%	3.7%	6.5%
Not Helpful	0.0%	0.0%	0.0%	2.6%	0.0%	0.2%
Number Responding	153	93	95	39	54	434
H. Developing Ability to Solve Problems						
Extremely Helpful	24.8%	23.7%	22.9%	35.9%	33.3%	26.2%
Very Helpful	40.5%	50.5%	36.5%	46.2%	42.6%	42.5%
Moderately Helpful	24.2%	17.2%	29.2%	15.4%	20.4%	22.5%
Slightly Helpful	9.2%	7.5%	11.5%	2.6%	3.7%	8.0%
Not Helpful	1.3%	1.1%	0.0%	0.0%	0.0%	0.7%
Number Responding	153	93	96	39	54	435
I. Making Informed Decisions as a Citizen						
Extremely Helpful	19.6%	18.5%	19.8%	7.7%	16.7%	18.0%
Very Helpful	30.1%	45.7%	31.3%	43.6%	48.1%	37.1%
Moderately Helpful	34.6%	21.7%	32.3%	33.3%	24.1%	30.0%
Slightly Helpful	12.4%	12.0%	11.5%	7.7%	9.3%	11.3%
Not Helpful	3.3%	2.2%	5.2%	7.7%	1.9%	3.7%
Number Responding	153	92	96	39	54	434
J. Developing Writing Skills						
Extremely Helpful	27.5%	28.0%	29.5%	12.8%	16.7%	25.3%
Very Helpful	31.4%	33.3%	35.8%	43.6%	33.3%	34.1%
Moderately Helpful	21.6%	23.7%	23.2%	23.1%	33.3%	24.0%
Slightly Helpful	16.3%	12.9%	9.5%	12.8%	16.7%	13.8%
Not Helpful	3.3%	2.2%	2.1%	7.7%	0.0%	2.8%
Number Responding	153	93	95	39	54	434
K. Developing Oral Communication Skills						
Extremely Helpful	26.8%	34.8%	30.2%	17.9%	31.5%	29.0%
Very Helpful	35.9%	40.2%	38.5%	51.3%	35.2%	38.7%
Moderately Helpful	22.9%	14.1%	21.9%	17.9%	22.2%	20.3%
Slightly Helpful	10.5%	8.7%	8.3%	7.7%	11.1%	9.4%
Not Helpful	3.9%	2.2%	1.0%	5.1%	0.0%	2.5%
Number Responding	153	92	96	39	54	434
L. Developing Knowledge of Scientific and Technological Developments						
Extremely Helpful	21.6%	18.3%	15.6%	33.3%	29.6%	21.6%
Very Helpful	28.8%	26.9%	28.1%	46.2%	40.7%	31.3%
Moderately Helpful	24.8%	38.7%	33.3%	17.9%	25.9%	29.2%
Slightly Helpful	16.3%	14.0%	15.6%	0.0%	3.7%	12.6%
Not Helpful	8.5%	2.2%	7.3%	2.6%	0.0%	5.3%
Number Responding	153	93	96	39	54	435

Southern Illinois University Edwardsville
Survey of 2012 Baccalaureate Graduates -- One Year Out
Survey Responses -- Part VI
Educational Effectiveness Questions

School Detail, cont.	CAS	BUS	EDU	ENG	NUR	Total
27. Undergraduate Education Broadened Interest Beyond Subjects in Major						
Strongly Agree	20.0%	22.6%	17.7%	12.8%	11.1%	18.3%
Agree	45.2%	44.1%	46.9%	51.3%	46.3%	46.0%
Neutral	23.9%	25.8%	25.0%	28.2%	37.0%	26.5%
Disagree	11.0%	6.5%	8.3%	2.6%	5.6%	8.0%
Strongly Disagree	0.0%	1.1%	2.1%	5.1%	0.0%	1.1%
Number Responding	155	93	96	39	54	437
28. Importance of College Education to:						
A. Personal Life						
Very Important	56.8%	63.0%	75.0%	55.3%	74.1%	64.1%
Moderately Important	29.7%	18.5%	17.7%	13.2%	18.5%	21.8%
Slightly Important	11.0%	10.9%	5.2%	21.1%	5.6%	9.9%
Not Important	2.6%	7.6%	2.1%	10.5%	1.9%	4.1%
Number Responding	155	92	96	38	54	435
B. Community Life						
Very Important	31.0%	32.3%	42.7%	34.2%	55.6%	37.2%
Moderately Important	31.0%	32.3%	36.5%	26.3%	33.3%	32.3%
Slightly Important	26.5%	19.4%	18.8%	18.4%	11.1%	20.6%
Not Important	11.6%	16.1%	2.1%	21.1%	0.0%	9.9%
Number Responding	155	93	96	38	54	436
C. Professional Life						
Very Important	61.7%	71.0%	69.8%	81.6%	92.6%	71.0%
Moderately Important	18.8%	18.3%	24.0%	10.5%	7.4%	17.7%
Slightly Important	9.7%	7.5%	3.1%	5.3%	0.0%	6.2%
Not Important	9.7%	3.2%	3.1%	2.6%	0.0%	5.1%
Number Responding	154	93	96	38	54	435
29. Quality of SIUE Education Relative to That of Friends at Other Schools						
Among the Best	14.8%	21.7%	28.4%	19.4%	18.5%	20.1%
Above Average	42.6%	46.7%	44.2%	55.6%	51.9%	46.1%
Average	36.8%	28.3%	26.3%	19.4%	27.8%	30.1%
Below Average	5.2%	3.3%	1.1%	2.8%	1.9%	3.2%
Among the Worst	0.6%	0.0%	0.0%	2.8%	0.0%	0.5%
Number Responding	155	92	95	36	54	432
30. Involvement Since Bachelor's Degree with:						
A. Organized, Formal, Career Related Learning (non-degree)						
Currently Involved	30.1%	33.3%	36.8%	18.4%	50.0%	33.7%
Have Been Involved	28.8%	29.0%	40.0%	47.4%	37.0%	33.9%
Never Involved	41.2%	37.6%	23.2%	34.2%	13.0%	32.3%
Number Responding	153	93	95	38	54	433
B. Personal Enrichment Studies						
Currently Involved	22.9%	18.3%	23.4%	7.9%	7.5%	18.8%
Have Been Involved	28.1%	32.3%	41.5%	31.6%	41.5%	33.9%
Never Involved	49.0%	49.5%	35.1%	60.5%	50.9%	47.3%
Number Responding	153	93	94	38	53	431

Southern Illinois University Edwardsville
Survey of 2012 Baccalaureate Graduates -- One Year Out
Survey Responses -- Part VI
Educational Effectiveness Questions

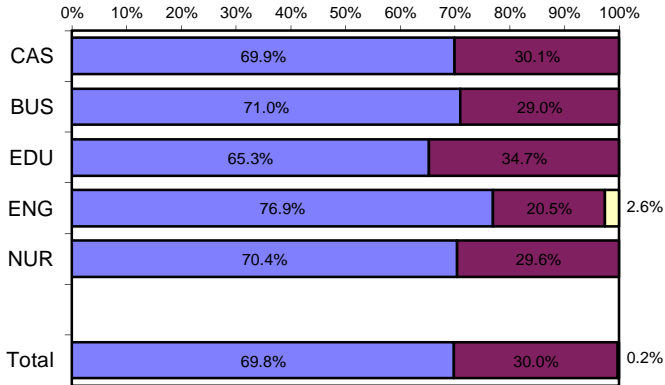
School Detail, cont.	CAS	BUS	EDU	ENG	NUR	Total
C. Professional Activities or Organizations						
Currently Involved	39.5%	37.6%	43.2%	31.6%	35.2%	38.7%
Have Been Involved	23.7%	37.6%	32.6%	44.7%	50.0%	33.8%
Never Involved	36.8%	24.7%	24.2%	23.7%	14.8%	27.5%
Number Responding	152	93	95	38	54	432
D. Volunteer Work / Community Svc Activities or Organizations						
Currently Involved	25.3%	30.1%	36.5%	23.7%	39.6%	30.4%
Have Been Involved	39.0%	34.4%	36.5%	36.8%	39.6%	37.3%
Never Involved	35.7%	35.5%	27.1%	39.5%	20.8%	32.3%
Number Responding	154	93	96	38	53	434
E. Social / Recreational Activities or Organizations						
Currently Involved	32.5%	45.7%	40.6%	50.0%	43.4%	40.0%
Have Been Involved	39.0%	37.0%	32.3%	34.2%	37.7%	36.5%
Never Involved	28.6%	17.4%	27.1%	15.8%	18.9%	23.6%
Number Responding	154	92	96	38	53	433
F. Political Activities or Organizations						
Currently Involved	1.3%	9.7%	5.3%	5.3%	3.8%	4.6%
Have Been Involved	22.1%	10.8%	18.9%	7.9%	11.5%	16.4%
Never Involved	76.6%	79.6%	75.8%	86.8%	84.6%	78.9%
Number Responding	154	93	95	38	52	432
G. Religious / Ethical Activities or Organizations						
Currently Involved	26.6%	19.6%	27.1%	28.9%	18.5%	24.4%
Have Been Involved	18.8%	27.2%	25.0%	18.4%	35.2%	24.0%
Never Involved	54.5%	53.3%	47.9%	52.6%	46.3%	51.6%
Number Responding	154	92	96	38	54	434
H. Support or Participation in the Arts (music, drama, dance, art)						
Currently Involved	24.7%	7.6%	17.9%	15.8%	9.3%	16.9%
Have Been Involved	27.3%	26.1%	29.5%	7.9%	25.9%	25.6%
Never Involved	48.1%	66.3%	52.6%	76.3%	64.8%	57.5%
Number Responding	154	92	95	38	54	433
I. Reading books not directly related to your job						
Currently Involved	57.1%	55.9%	68.8%	39.5%	59.3%	58.2%
Have Been Involved	28.6%	24.7%	20.8%	34.2%	25.9%	26.2%
Never Involved	14.3%	19.4%	10.4%	26.3%	14.8%	15.6%
Number Responding	154	93	96	38	54	435

2/10/2014

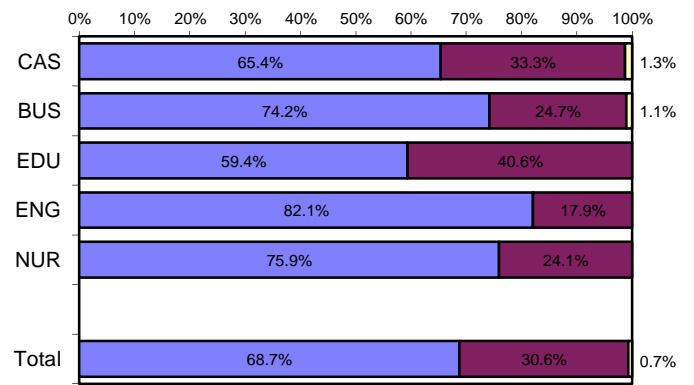
Helpfulness of University Experiences in:

■ Very to Extremely Helpful
 ■ Slightly to Moderately Helpful
 ■ Not Helpful

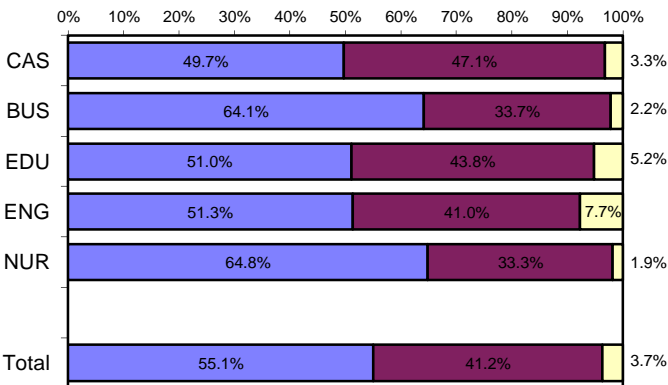
Viewing Problems from Different Perspectives



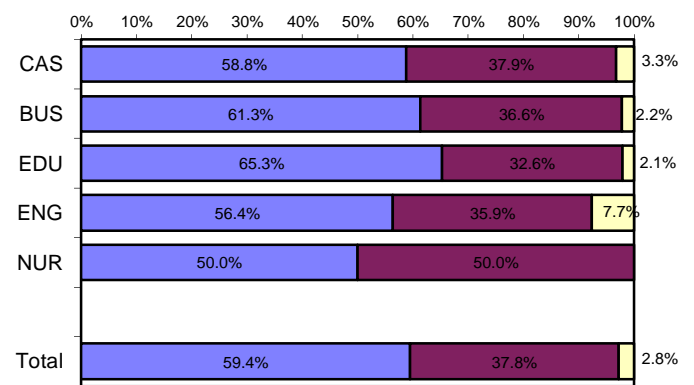
Developing Ability to Solve Problems



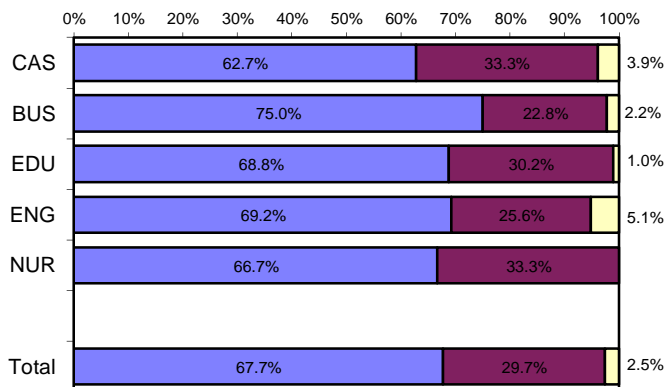
Making Informed Decisions as a Citizen



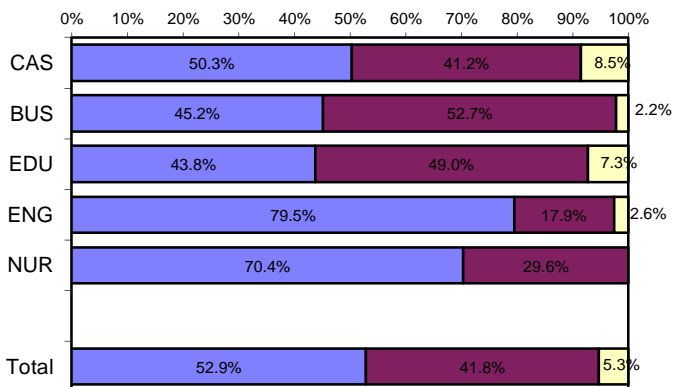
Developing Writing Skills



Developing Oral Communication Skills



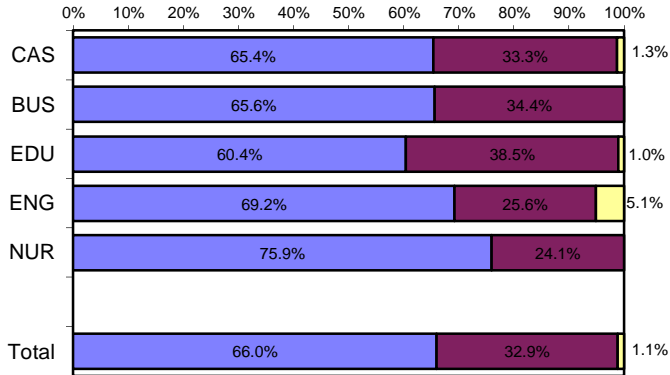
Developing Knowledge of Scientific and Technological Developments



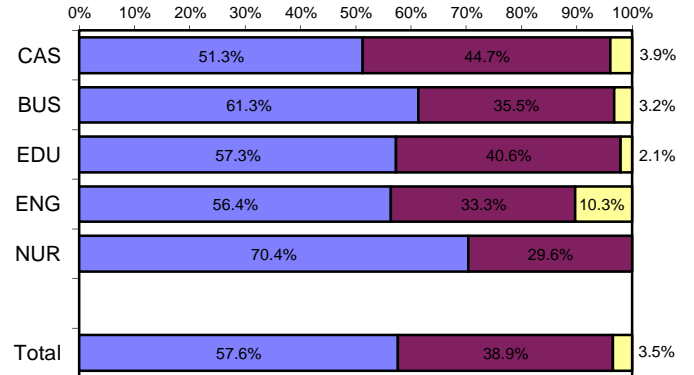
Helpfulness of University Experiences in:

■ Very to Extremely Helpful
 ■ Slightly to Moderately Helpful
 ■ Not Helpful

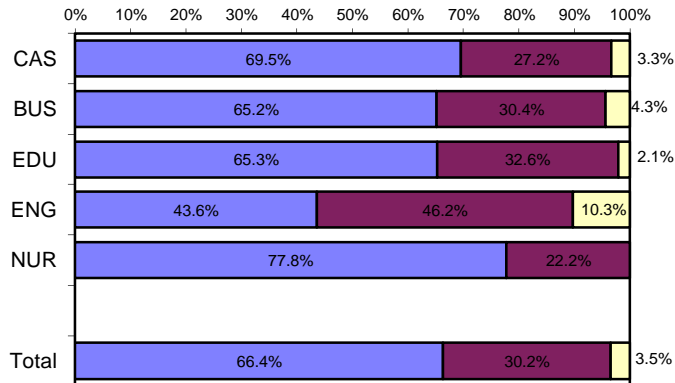
Developing Critical Thinking Ability



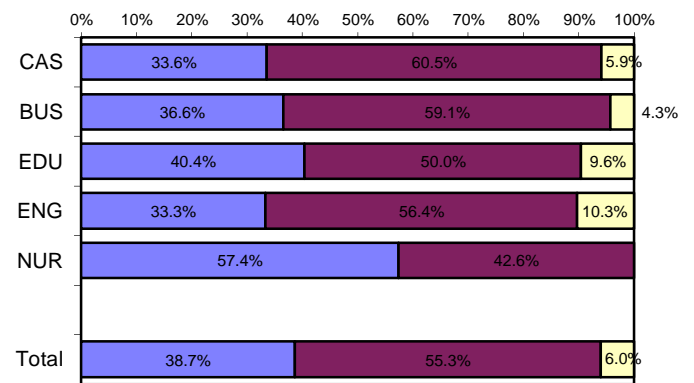
Developing Sense of Ethics



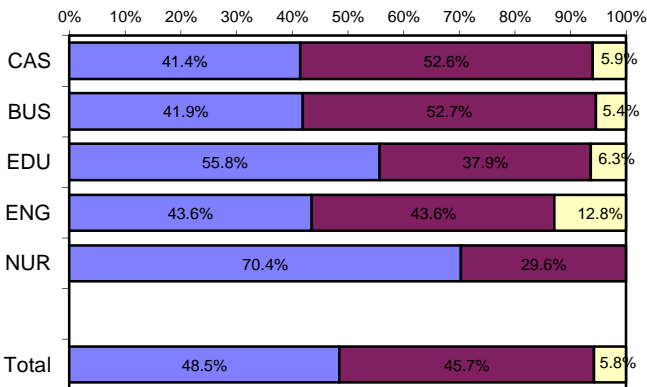
Understanding People with Different Backgrounds



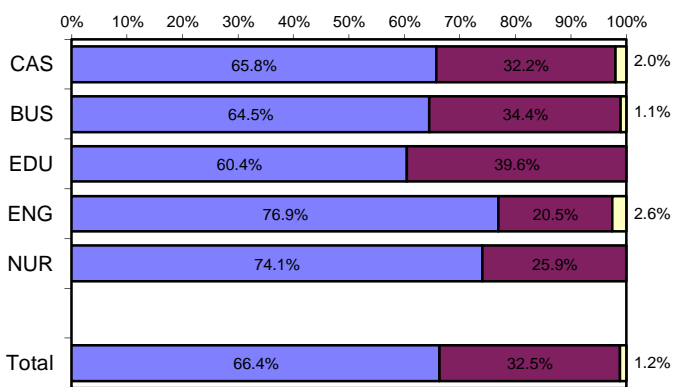
Becoming a More Active Citizen



Improving Quality of Life (aside from financial benefits)



Developing Reasoning Skills



Appendix A

Sample Questionnaire

SOUTHERN ILLINOIS UNIVERSITY EDWARDSVILLE

SURVEY OF 2012 BACCALAUREATE GRADUATES ONE YEAR AFTER GRADUATION

Most of the questions in this survey can be answered simply by circling the appropriate number. We hope you will give us your help and valuable input so that we can design programs that better serve the needs of SIUE students. PLEASE ANSWER THESE QUESTIONS ONLY IN REGARD TO THE SIUE UNDERGRADUATE DEGREE YOU RECEIVED LAST YEAR. Your individual responses to this questionnaire will be kept completely confidential. Thank you for your cooperation. Please return this survey in the envelope provided.

I. Employment

1. Are you currently employed (including self-employed)?

- | | |
|------------------|--------------------------------------------|
| 1 Yes, full-time | 3 No, but <u>am</u> seeking employment |
| 2 Yes, part-time | 4 No, and <u>am not</u> seeking employment |

If you are NOT employed (responses 3 and 4), skip to *Section II*.

2. What is the Zip Code of your place of employment (e.g., your actual workplace, not corporate headquarters)? _____

3. How would you classify your primary employer?

- | | |
|--------------------------------------------------------|------------------------------------------|
| 1 Self-employed or private practice | 6 Health agency (e.g., hospital, clinic) |
| 2 Business (industrial, commercial or service) | 7 Federal, state, or local government |
| 3 Professional firm (e.g., engineering, law) | 8 Armed services |
| 4 College or university | 9 Non-profit (non-government) |
| 5 Elementary/secondary school (including cooperatives) | 10 Other (please specify) _____ |

4. How satisfied are you with your current job?

- 1 Very Satisfied 2 Satisfied 3 Somewhat Satisfied 4 Somewhat Dissatisfied 5 Dissatisfied 6 Very Dissatisfied

5. How closely related is your current job to your bachelor's degree major?

- 1 Closely Related 2 Related 3 Unrelated

If you marked "3" (unrelated), is this by choice?

- 1 Yes 2 No

6. When did you secure your first job following receipt of your bachelor's degree?

- 1 Held the same job while enrolled
2 Secured job by time of graduation
3 Secured job after graduation

If you marked "3," how many months after graduation did you secure employment?

- | | | |
|--------------------------|--------------------------|----------------------|
| 1 Less than 1 month | 3 Between 3 and 6 months | 5 More than 9 months |
| 2 Between 1 and 3 months | 4 Between 6 and 9 months | |

7. What is your annual earned income before taxes in your current job? _____

8. In general, how well did your bachelor's degree prepare you for your present job?

- 1 Very Well 2 Well 3 Adequately 4 Inadequately 5 Poorly 6 Very poorly

9. Please circle on the lists below both your primary **occupation**¹ (what you do) and the **industry** in which you are employed (where you do it). Although some occupations typically work within one industry, they may be employed in other industries also. An example would be a school nurse — Health: Registered Nurses (11) in Educational Services (15). Examples of the types of occupations contained in each category are provided in italics.

Please write in your actual job title _____ (optional)

Circle One

Occupational Categories

- | | |
|-----------------------------------------------------------------------------------------------------------------------------------------------------------------------------------------------------------------------------------------------------------------------------------------------------------------------------------------------------------------------------------------------------------------------------------------------------------------------------------------------------------------------------------------------------------------------------------------------------------------------------------------------------------------------------------------------------------------------------------------------------------------------------------------------------------------------------------------------------------------------------------------------------------------------------------------------------------------------------------------------------------------------------------------------------------------------------------------------------------------------------------------------------------------------------------------------------------------------------------------------------------------------------------------------------------------------------------------------------------------------------------------------------------------------------------------------------------------------------------------------------------------------------------------------------------------------------------------------------------------------------------------------------------------------------------------------------------------------------------------------------------------------------------------------------------------------------------------------------------------------------------------------------------------------------------------------------------------------------------------------------------------------------------------------------------------------------------------------------------------------------------------------------------------------------------------------------------------------------------------------------------------------------------------------------------------------------------------------------------------------------------------------------------------------------------------------------------------------------------------------------------------------------------------------------------------------------------------------------------------------------------------------------------------------------------------|-------------------------------------------------------------------------------------------------------------------------------------------------------------------------------------------------------------------------------------------------------------------------------------------------------------------------------------------------------------------------------------------------------------------------------------------------------------------------------------------------------------------------------------------------------------------------------------------------------------------------------------------------------------------------------------------------------------------------------------------------------------------------------------------------------------------------------------------------------------------------------------------------------------------------------------------------------------------------------------------------------------------------------------------------------------------------------------------------------------------------------------------------------------------------------------------------------------------------------------------------------------------------------------------------------------------------------------------------------------------------------------------------------------------------------------------------------------------------------------------------------------------------------------------------------------------------------------------------------------------------------------------------------------------------------------------------------------------------------------------------------------------------------------------------------------------------------------------------------------------------------------------------------------------------------------------------------------------------------------------------------------------------------------------------------------------------------------------------------------------------------------------------------------------------------------------------------------------------------------------------------------------------------------------------------------------------------------------------------------------------------------------------------------------------------------------------------------------------------------------------------------------------------------------------------------------------------------------------------------------------------------------------------------------------------------------------------------------------------------------------------------------------------|
| <p>01. Management (<i>such as top executives; marketing, P.R., finance, human resources, administrative services, purchasing, & sales managers; educational administrators; health administrators</i>)</p> <p>02. Business Operations (<i>such as buyers & purchasing agents; insurance claims adjusters/examiners; human resources, training, & labor relations specialists; management analysts</i>)</p> <p>03. Financial Specialists (<i>such as accountants, assessors, appraisers, financial & credit analysts/advisors, loan counselors/officers</i>)</p> <p>04. Computer Specialists (<i>such as computer & information scientists, programmers, software specialists, database & network administrators and analysts</i>)</p> <p>05. Mathematical Scientists and Technicians (<i>such as mathematicians, statisticians, actuaries & mathematical technicians</i>)</p> <p>06. Architects, Surveyors, and Cartographers</p> <p>07. Engineers and Related Technicians (<i>such as agricultural, civil, computer hardware, electrical, industrial, mechanical, materials & construction engineers & technicians</i>)</p> <p>08. Life and Physical Scientists and Technicians (<i>such as agricultural & food scientists, biologists, medical scientists, chemists, physicists, atmospheric & environmental scientists, and related technicians</i>)</p> <p>09. Social Scientists (<i>such as economists, psychologists, market & survey researchers, geographers, historians, sociologists, anthropologists, political scientists & urban planners</i>)</p> <p>10. Health: Doctors (<i>such as physicians & surgeons, dentists, veterinarians, optometrists, podiatrists, and chiropractors</i>)</p> <p>11. Health: Registered Nurses</p> <p>12. Health: Therapists (<i>such as occupational, physical, recreational, and speech therapists</i>)</p> <p>13. Health: Other Health Practitioners, Professionals, and Support Workers (<i>such as pharmacists, dieticians, physician assistants, and all other technicians/assistants/aides</i>)</p> <p>14. Community and Social Service (<i>such as counselors, social workers, community & religious workers, probation officers</i>)</p> <p>15. Legal: Attorneys/Judges</p> <p>16. Legal: Legal Support Workers</p> <p>17. Education : Early Childhood Teachers (<i>such as day care, pre-school, and kindergarten teachers</i>)</p> <p>18. Education: Elementary School Teachers</p> <p>19. Education: Middle School Teachers</p> | <p>20. Education: Secondary School Teachers</p> <p>21. Education: Special Education Teachers</p> <p>22. Education: Other, <u>except</u> Administrators (see 01) (<i>such as postsecondary teachers; vocational teachers; teaching & research assistants; other teachers, trainers, & assistants</i>)</p> <p>23. Library Occupations (<i>such as librarians, archivists, curators, and library technicians</i>)</p> <p>24. Arts and Design Workers (<i>such as designers and fine & craft artists</i>)</p> <p>25. Entertainers, Performers, Sports and Related Workers (<i>such as musicians, singers, dancers, actors, producers, directors, composers, athletes, coaches and referees</i>)</p> <p>26. Media and Communication Workers (<i>such as writers & editors, announcers, news analysts & reporters, public relations specialists, and media & communications equipment workers</i>)</p> <p>27. Sales (<i>such as real estate, retail, insurance & securities sales agents, wholesale & manufacturing sales representatives, telemarketers</i>)</p> <p>28. Office and Administration (<i>such as clerical & support personnel, clerks, tellers, distribution workers</i>)</p> <p>29. Protective Services (<i>such as firefighters, correctional officers, police, life guards, security guards, investigators</i>)</p> <p>30. Food Preparation and Serving (<i>such as cooks, bartenders, food service workers & servers</i>)</p> <p>31. Building and Grounds Cleaning and Maintenance (<i>such as janitors, cleaners, landscaping & grounds keeping laborers</i>)</p> <p>32. Personal Care and Services (<i>such as flight attendants, child care workers, hairstylists & personal care workers, recreation workers, hotel & travel industry workers</i>)</p> <p>33. Farming, Fishing, and Forestry (<i>such as farmworkers, animal care workers, foresters, loggers</i>)</p> <p>34. Construction and Extractive (<i>such as carpenters; electricians; painters, construction, oil & mining workers; plumbers</i>)</p> <p>35. Installation, Maintenance, and Repair (<i>such as telecommunications workers; auto repairers; heating, air conditioning, and refrigeration mechanics and installers</i>)</p> <p>36. Production (<i>such as electrical & electronic equipment assemblers; food, metal, plastic, printing, & photography industry technicians & workers</i>)</p> <p>37. Transportation and Material Moving (<i>such as pilots, drivers, air traffic controllers</i>)</p> <p>38. Military (<i>such as officers & enlisted personnel</i>)</p> |
|-----------------------------------------------------------------------------------------------------------------------------------------------------------------------------------------------------------------------------------------------------------------------------------------------------------------------------------------------------------------------------------------------------------------------------------------------------------------------------------------------------------------------------------------------------------------------------------------------------------------------------------------------------------------------------------------------------------------------------------------------------------------------------------------------------------------------------------------------------------------------------------------------------------------------------------------------------------------------------------------------------------------------------------------------------------------------------------------------------------------------------------------------------------------------------------------------------------------------------------------------------------------------------------------------------------------------------------------------------------------------------------------------------------------------------------------------------------------------------------------------------------------------------------------------------------------------------------------------------------------------------------------------------------------------------------------------------------------------------------------------------------------------------------------------------------------------------------------------------------------------------------------------------------------------------------------------------------------------------------------------------------------------------------------------------------------------------------------------------------------------------------------------------------------------------------------------------------------------------------------------------------------------------------------------------------------------------------------------------------------------------------------------------------------------------------------------------------------------------------------------------------------------------------------------------------------------------------------------------------------------------------------------------------------------------------------|-------------------------------------------------------------------------------------------------------------------------------------------------------------------------------------------------------------------------------------------------------------------------------------------------------------------------------------------------------------------------------------------------------------------------------------------------------------------------------------------------------------------------------------------------------------------------------------------------------------------------------------------------------------------------------------------------------------------------------------------------------------------------------------------------------------------------------------------------------------------------------------------------------------------------------------------------------------------------------------------------------------------------------------------------------------------------------------------------------------------------------------------------------------------------------------------------------------------------------------------------------------------------------------------------------------------------------------------------------------------------------------------------------------------------------------------------------------------------------------------------------------------------------------------------------------------------------------------------------------------------------------------------------------------------------------------------------------------------------------------------------------------------------------------------------------------------------------------------------------------------------------------------------------------------------------------------------------------------------------------------------------------------------------------------------------------------------------------------------------------------------------------------------------------------------------------------------------------------------------------------------------------------------------------------------------------------------------------------------------------------------------------------------------------------------------------------------------------------------------------------------------------------------------------------------------------------------------------------------------------------------------------------------------------------------------------------------------------------------------------------------------------------------|

Circle One

Industrial Categories

- | | | |
|-------------------------------------------------------------------------------------------------------------------------------------------------------------------------------------------------------------------------------------------------------------------------------------------------|-----------------------------------------------------------------------------------------------------------------------------------------------------------------------------------------------------------------------------------------------------------------------------------------------------------------------------------------------------|----------------------------------------------------------------------------------------------------------------------------------------------------------------------------------------------------------------------------------------------------------------|
| <p>01 Agriculture, Forestry, and Fishing</p> <p>02 Mining</p> <p>03 Utilities</p> <p>04 Construction</p> <p>05 Manufacturing</p> <p>06 Wholesale Trade</p> <p>07 Retail Trade</p> <p>08 Transportation</p> <p>09 Information</p> | <p>10 Finance and Insurance</p> <p>11 Real Estate and Rental and Leasing</p> <p>12 Professional, Scientific and Technical Services</p> <p>13 Management of Companies and Enterprises</p> <p>14 Administrative and Support, Waste Management & Remediation Services</p> <p>15 Educational Services</p> | <p>16 Health Care and Social Assistance</p> <p>17 Arts, Entertainment and Recreation</p> <p>18 Accommodations and Food Services</p> <p>19 Other Services (except Public Administration)</p> <p>20 Public Administration</p> |
|-------------------------------------------------------------------------------------------------------------------------------------------------------------------------------------------------------------------------------------------------------------------------------------------------|-----------------------------------------------------------------------------------------------------------------------------------------------------------------------------------------------------------------------------------------------------------------------------------------------------------------------------------------------------|----------------------------------------------------------------------------------------------------------------------------------------------------------------------------------------------------------------------------------------------------------------|

¹For some occupations, such as doctors, the occupation is not appropriate for students one year after earning a baccalaureate degree. This complete listing is also used for surveys of alumni five-years and nine-years after graduation.

II. Education

10. Have you enrolled in a college or university since earning your bachelor's degree?

- 1 Yes, full-time 2 Yes, part-time 3 No

If you have NOT enrolled in a college or university (response "3"), skip to *Section III*.

11. Are you pursuing (or have you completed) an additional degree since earning your bachelor's?

- 1 Yes 2 No (If your answer is "no," skip to *Section III*.)

If you are pursuing (or have completed) another degree, please indicate which degree below:

- | | |
|----------------------------------------------------------------------------|------------------------------------------------------------------------|
| 1 Associate's | 6 Health Professional (dentistry, pharmacy, podiatry, optometry, etc.) |
| 2 Second Bachelor's | 7 Theology/Divinity |
| 3 Academic Master's (MA, MS, MEd, etc.) | 8 Law (LLB, JD) |
| 4 Professional Master's (MBA, MSW, MFA, MPA, etc.) or Education Specialist | 9 Doctorate (PhD, EdD, DA, DBA, etc.) |
| 5 Medicine (MD, DO) | 10 Other, please specify: _____ |

12. In general, how well did your bachelor's degree prepare you for your additional degree program?

- 1 Very well 2 Well 3 Adequately 4 Inadequately 5 Poorly 6 Very poorly

III. Satisfaction

13. What is your present attitude towards the University?

- 1 Strongly Positive 2 Positive 3 Somewhat Positive 4 Somewhat Negative 5 Negative 6 Strongly Negative

14. What is your present attitude towards your bachelor's degree major?

- 1 Strongly Positive 2 Positive 3 Somewhat Positive 4 Somewhat Negative 5 Negative 6 Strongly Negative

IV. Educational Practices: *The questions below will provide feedback to help the University improve undergraduate education. Please respond to each question by evaluating your program as a whole.*

In my major degree program, --	Very Often	Often	Sometimes	Infrequently	Never
15. professors were accessible outside of class.	1	2	3	4	5
16. I was expected or required to work cooperatively with other students on projects, homework, and assignments.	1	2	3	4	5
17. professors encouraged me to challenge my own ideas, the ideas of other students, and those presented in readings and other course materials.	1	2	3	4	5
18. professors used appropriate teaching activities to help me learn.	1	2	3	4	5
19. professors' expectations for the quality of student work was high.	1	2	3	4	5
20. professors provided me with timely feedback on my performance.	1	2	3	4	5
21. professors encouraged students' questions and discussion in class.	1	2	3	4	5
22. I spent the necessary time and energy to come to class prepared.	1	2	3	4	5

V. Program Quality

23. How would you rate the quality of your major degree program concerning the:

	Excellent	Good	Fair	Poor
A. Number of courses offered in your major for you to complete your program in a reasonable amount of time.	1	2	3	4
B. Classes being offered at convenient times.	1	2	3	4
C. Classes being offered in a logical sequence.	1	2	3	4

24. How would you rate the quality of the faculty in your major degree program:

- 1 2 3 4

25. Were the academic standards in grading students by faculty in your degree program:

- 1 Too High 2 About Right 3 Too Low

VI. Educational Effectiveness

26. Listed below are some abilities often mentioned as important for personal and professional success in the 21st century. In your view, how effective were your University experiences in —

	Extremely Helpful	Very Helpful	Moderately Helpful	Slightly Helpful	Not Helpful
A. helping you to better develop your critical thinking ability?	1	2	3	4	5
B. helping you to better develop your sense of ethics?	1	2	3	4	5
C. contributing to a greater understanding of people with different backgrounds, habits, values, appearances, and abilities?	1	2	3	4	5
D. helping you to become a more active citizen?	1	2	3	4	5
E. improving the quality of your life aside from financial benefits?	1	2	3	4	5
F. helping you to better develop your reasoning skills?	1	2	3	4	5
G. helping you to better develop your capacity to view problems from different perspectives?	1	2	3	4	5
H. helping you to better develop your ability to solve problems?	1	2	3	4	5
I. helping you to better develop your ability to make informed decisions as a citizen?	1	2	3	4	5
J. helping you to better develop your writing skills?	1	2	3	4	5
K. helping you to better develop your oral communication skills?	1	2	3	4	5
L. helping you to better develop your knowledge of scientific and technological developments?	1	2	3	4	5

27. My SIUE undergraduate education broadened my interest in issues beyond the subjects in my major.

1 Strongly Agree 2 Agree 3 Neutral 4 Disagree 5 Strongly Disagree

28. How important has your college education been to your —

	Very Important	Moderately Important	Slightly Important	Not Important
A. Personal Life	1	2	3	4
B. Community Life	1	2	3	4
C. Professional Life	1	2	3	4

29. How would you rate the quality of education that you received from SIUE relative to the education that your friends and colleagues have received from other colleges or universities?

1 Among the Best 2 Above Average 3 Average 4 Below Average 5 Among the worst

30. Please indicate your involvement with each of the following since completing your bachelor's degree:

	Currently Involved	Have Been Involved	Never Involved
A. Organized, formal learning that is career-related (non-degree)	1	2	3
B. Personal enrichment studies	1	2	3
C. Professional activities or organizations	1	2	3
D. Volunteer work / community service activities or organizations	1	2	3
E. Social/recreational activities or organizations	1	2	3
F. Political activities or organizations	1	2	3
G. Religious/ethical activities or organizations	1	2	3
H. Support or participation in the Arts (<i>music, drama, dance, art</i>)	1	2	3
I. Reading books not directly related to your job	1	2	3

VII. Comments