

Southern Illinois University at Edwardsville
Survey of 2011 Baccalaureate Graduates -- One Year Out

Survey Results for Schools

April 2013

Survey Administered By
The Office of Undergraduate Assessment and Program Review

Survey Results Compiled By
The Office of Institutional Research and Studies

Southern Illinois University at Edwardsville

Survey of 2011 Baccalaureate Graduates -- One Year Out

Contents

Introduction

Methodology

Survey Population and Respondents

- Charts: *2011 Baccalaureate Recipients, Profile*
- \$ *Gender*
 - \$ *Race/Ethnic*
 - \$ *Age at Graduation*
 - \$ *Matriculation Status*
 - \$ *Time to Degree for New Freshmen*
 - \$ *Time to Degree for New Transfers*

- Table: *Comparison of All Graduates to Survey Respondents*

Survey Results

- Charts: *2011 Baccalaureate Graduates One Year Out, Satisfaction*
- \$ *Present Attitude Toward the University*
 - \$ *Present Attitude Towards Alumni's Bachelor's Degree Major*
 - \$ *Quality of SIUE Education Relative to That of Friends at Other Schools*

- 2011 Baccalaureate Graduates One Year Out, Additional Education*
- \$ *Enrolled Since Bachelors Degree*
 - \$ *How Well Bachelor's Degree Prepared Alumni for Additional Degree*

- 2011 Baccalaureate Graduates One Year Out, Employment*
- \$ *Employment Status*
 - \$ *Place of Employment*
 - \$ *Job in Field Related to Major?*
 - \$ *Job Satisfaction*
 - \$ *How Well Bachelor's Degree Program Prepared Alumni for Present Job*
 - \$ *Mean Salary of Alumni Employed Full Time*

- Helpfulness of University Experiences in:*
- \$ *Developing Critical Thinking Ability*
 - \$ *Developing Sense of Ethics*
 - \$ *Understanding People with Different Backgrounds*
 - \$ *Becoming a more Active Citizen*
 - \$ *Improving Quality of Life (aside from financial benefits)*
 - \$ *Developing Reasoning Skills*
 - \$ *Viewing Problems from Different Perspectives*
 - \$ *Developing Ability to Solve Problems*
 - \$ *Making Informed Decisions as a Citizen*

- \$ *Developing Writing Skills*
- \$ *Developing Oral Communication Skills*
- \$ *Developing Knowledge of Scientific and Technological Developments*

Tables:

<i>Part I</i>	<i>Employment Questions</i>
<i>Part II</i>	<i>Education Questions</i>
<i>Part III</i>	<i>Satisfaction Questions</i>
<i>Part IV</i>	<i>Educational Practices Questions</i>
<i>Part V</i>	<i>Program Quality Questions</i>
<i>Part VI</i>	<i>Educational Effectiveness Questions</i>

Questionnaire

Southern Illinois University Edwardsville
Survey of 2011 Baccalaureate Graduates -- One Year Out

Introduction

This one-year out baccalaureate survey was done to provide data for the University's undergraduate program reviews and other planning uses, and to participate in the Illinois Board of Higher Education Baccalaureate Graduates Follow-up System.

IBHE Survey Schedule and Population Definition		
Survey Year	Survey Type	Survey Group
1992	One-Year Out Survey	Class of >91
1993	Five-Year Out Survey	Class of >88
1994	Ten-Year Out Survey	Class of >84
1995	One-Year Out Survey	Class of >94
1996	Five-Year Out Survey	Class of >91
1997	Nine-Year Out Survey	Class of >88
1998	One-Year Out Survey	Class of >97
1999	Five-Year Out Survey	Class of >94
2000	Nine-Year Out Survey	Class of >91
2001	One-Year Out Survey	Class of >00
2002	Five-Year Out Survey	Class of >97
2003	Nine-Year Out Survey	Class of >94
2004	One-Year Out Survey	Class of '03
2005	Five-Year Out Survey	Class of '00
2006	Nine-Year Out Survey	Class of '97
2007	One-Year Out Survey	Class of '06
2008	Five-Year Out Survey	Class of '03
2009	Nine-Year Out Survey	Class of '00
2010	One-Year Out Survey	Class of '09
2011	Five-Year Out Survey	Class of '06

After the first six years, the surveys were reviewed and changed, modifying some questions and value scales, and adding some additional questions.

The current survey was administered during the spring and summer of 2012 to calendar year 2011 baccalaureate graduates of SIUE. The questionnaire includes 18 questions common to all Illinois public universities. These are the first 18 questions in the survey, forming Parts I, II, III, and the beginning of Part IV (Employment Questions, Education Questions, Satisfaction Questions, and Educational Practices Questions). SIUE added to these one question on industry of employment and

three additional questions on educational practices, and appended two additional parts to the survey to add questions about program quality, and educational effectiveness. (A questionnaire is included in Appendix A.)

Methodology

The survey questionnaire and a cover letter were adapted from the questionnaire and letter developed for previous surveys. SIUE Alumni Services provided current addresses for calendar year 2011 graduates as determined from institutional records. The survey was distributed in May 2012 to May 2011 baccalaureate graduates and in August 2012 to August 2011 and December 2011 baccalaureate graduates. Each envelope included a cover letter, a questionnaire, and a postage-paid, pre-addressed return envelope. Each questionnaire was stamped with a sequential, identifying number which was also stamped on a listing of the graduates (this aided in identifying the surveys when returned).

On April 27, 2012 approximately two weeks before the first set of surveys were to be mailed, a postcard was sent to the 1,224 May 2011 baccalaureate graduates, for whom addresses were available, notifying the alumni that they would be receiving a questionnaire and encouraging them to complete and return the survey. Surveys were mailed first class on May 11, 2011. On June 1, approximately three weeks after the survey was mailed and when the rate of survey returns had decreased, a follow-up postcard requesting that the survey be returned was mailed to each student who had not returned his or her survey. On June 22, a second wave mailing of the surveys was sent to the 1015 remaining non-respondents.

The second distribution began with the preliminary postcard mailed on August 10, 2012 to the 921 August and December 2011 baccalaureate graduates with known addresses. Surveys were mailed first class to this group on August 24, 2012. A second wave mailing of the survey was sent to 795 non-responders on October 1, 2012.

Returned surveys began arriving in mid-May and continued through the summer and fall, with a few arriving as late as February 2013. As the surveys came in, each was matched with the corresponding stamped listing. The students' names were then checked against the alphabetic list of alumni to verify (or, if the alumnus chose not to provide the identification number, to obtain) the student identification number. The student identification number was the key which allowed merging of survey data with administrative records (e.g., biographic, graduation, matriculation, and enrollment information).

Southern Illinois University Edwardsville
Survey of 2011 Baccalaureate Graduates -- One Year Out

Survey Population and Respondents

	Number of Graduates
2011 Baccalaureate Degrees	2,246
Less persons who received 2 baccalaureate degrees	26
2011 Baccalaureate Graduates	2,220
Less Graduates with No Address Available *	60
Graduates Surveyed	2,160
Less Non-Deliverable Surveys	39
Less Non-Responding Graduates	1,650
Survey Respondents	471
Gross Response Rate (Respondents/Total Surveyed)	21.81%
Adjusted Response Rate (Respondents/Delivered Surveys)	22.21%

* Includes deceased alumni, foreign addresses and known bad addresses.

Southern Illinois University Edwardsville
Survey of 2011 Baccalaureate Graduates -- One Year Out

Comparison of All Graduates to Survey Respondents

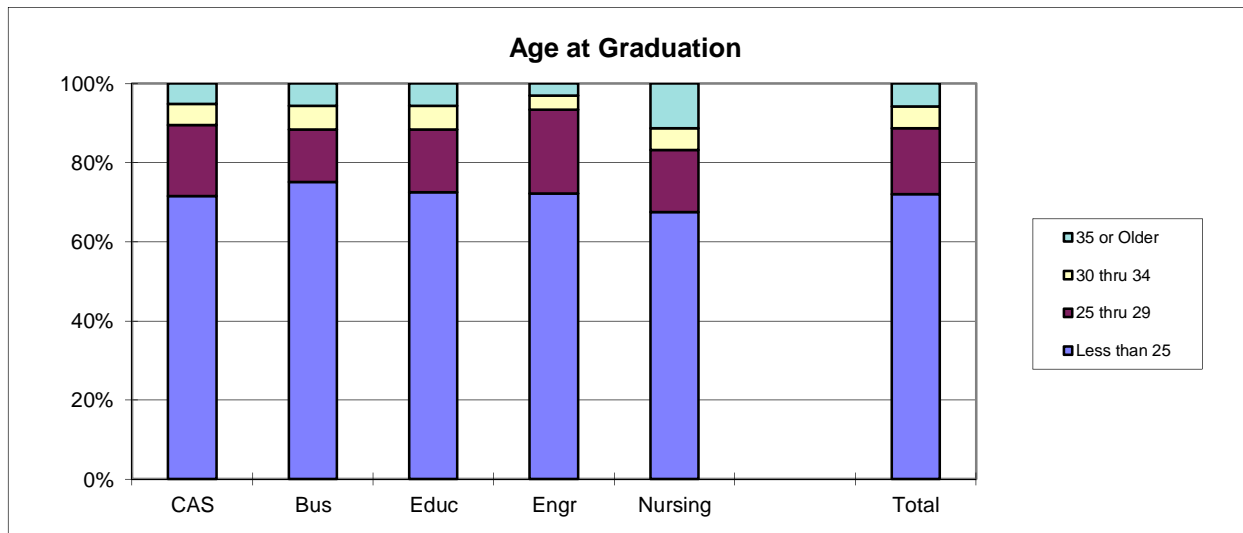
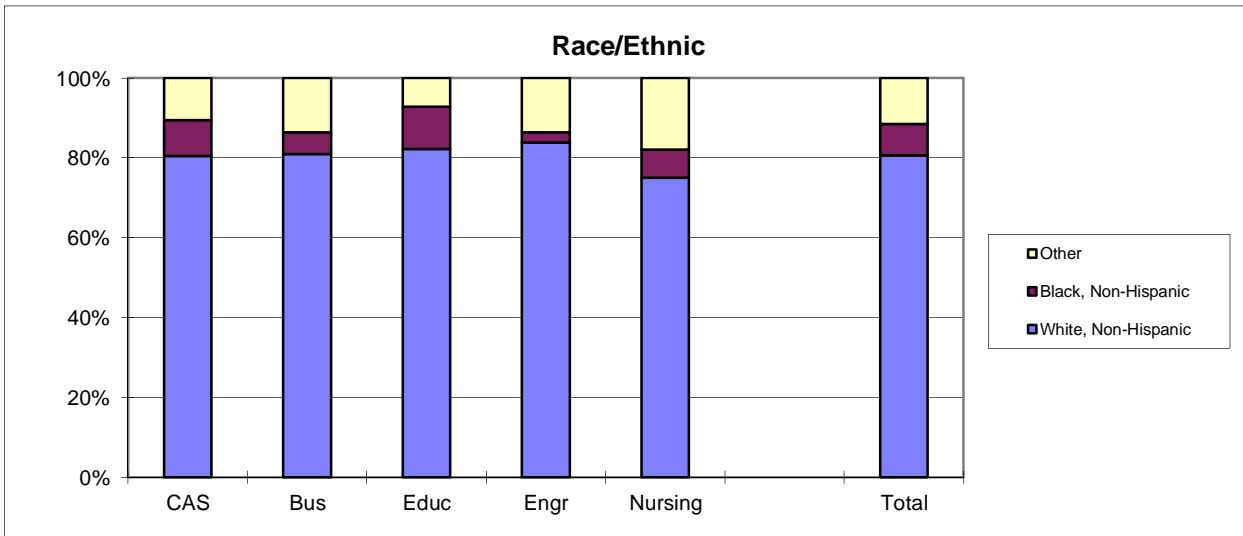
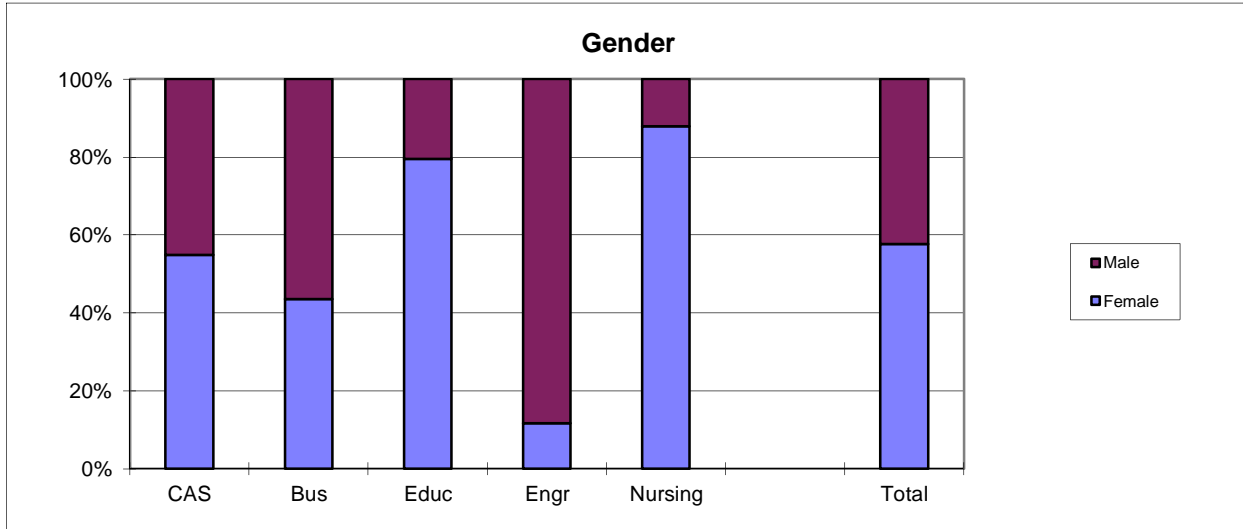
School Detail		All Graduates					Total
		CAS	BUS	EDU	ENG	NUR	
Total		867	441	458	198	256	2220
Female		54.9%	43.5%	79.5%	11.6%	87.9%	57.7%
Male		45.1%	56.5%	20.5%	88.4%	12.1%	42.3%
Missing Data		0.0%	0.0%	0.0%	0.0%	0.0%	0.0%
White, Non-Hispanic		80.5%	81.0%	82.3%	83.8%	75.0%	80.6%
Black, Non-Hispanic		9.0%	5.4%	10.5%	2.5%	7.0%	7.8%
Asian/Pacific Islander		2.1%	1.8%	1.3%	1.5%	3.9%	2.0%
American Indian/Alaskan Native		0.2%	0.0%	0.4%	0.0%	0.8%	0.3%
Hispanic		1.4%	2.0%	1.1%	1.0%	2.0%	1.5%
Non-Resident Alien		0.3%	0.9%	0.0%	4.0%	0.8%	0.8%
Missing Data		6.5%	8.8%	4.4%	7.1%	10.5%	7.0%
Age at Graduation		20 to 60	20 to 60	20 to 54	20 to 52	21 to 57	20 to 60
range							
median		23.0	23.0	23.0	23.0	23.0	23.0
Bachelor of Science		64.9%	80.0%	93.0%	99.0%	100.0%	80.8%
Bachelor of Music		2.7%	0.0%	0.0%	0.0%	0.0%	1.0%
Bachelor of Arts		25.4%	0.0%	7.0%	1.0%	0.0%	11.4%
Bachelor of Fine Arts		2.1%	0.0%	0.0%	0.0%	0.0%	0.8%
Bachelor of Sci in Accountancy		0.0%	20.0%	0.0%	0.0%	0.0%	4.0%
Bachelor of Liberal Studies		1.2%	0.0%	0.0%	0.0%	0.0%	0.5%
Bachelor of Social Work		3.8%	0.0%	0.0%	0.0%	0.0%	1.5%
Missing Data		0.0%	0.0%	0.0%	0.0%	0.0%	0.0%
Graduated Spring 2011		54.0%	51.0%	71.8%	54.0%	59.8%	57.7%
Graduated Summer 2011		14.4%	15.2%	13.5%	14.1%	0.8%	12.8%
Graduated Fall 2011		31.6%	33.8%	14.6%	31.8%	39.5%	29.5%
Missing Data		0.0%	0.0%	0.0%	0.0%	0.0%	0.0%
Matriculated as a New Freshman		51.7%	57.4%	49.8%	54.5%	52.7%	52.8%
Matriculated as a Transfer		46.1%	39.0%	48.0%	44.4%	44.9%	44.8%
Matriculated as a Non-Degree Student		0.3%	0.0%	0.4%	0.0%	0.4%	0.3%
Missing Data		1.8%	3.6%	1.7%	1.0%	2.0%	2.1%
Time to Degree for New Freshmen							
3 Years or Fewer		5.1%	6.3%	7.0%	1.9%	8.1%	5.8%
4 Years		52.2%	60.9%	48.2%	53.7%	67.4%	55.2%
5 Years		22.1%	17.8%	27.6%	28.7%	11.9%	21.7%
6 Years		7.6%	4.7%	6.6%	8.3%	6.7%	6.7%
7 Years		4.5%	1.2%	3.9%	0.0%	1.5%	2.9%
8 Years		2.2%	1.6%	1.8%	4.6%	1.5%	2.1%
9 Years		1.6%	2.4%	1.8%	0.9%	0.0%	1.5%
10 Years		1.1%	1.2%	0.9%	1.9%	1.5%	1.2%
11 Years or More		3.6%	4.0%	2.2%	0.0%	1.5%	2.8%
Missing Data		0.0%	0.0%	0.0%	0.0%	0.0%	0.0%
Time to Degree for Transfers							
2 or Fewer Years		26.5%	39.5%	30.5%	28.4%	38.3%	31.2%
3 Years		33.3%	30.8%	38.2%	33.0%	27.8%	33.3%
4 Years		19.0%	13.4%	17.3%	26.1%	20.9%	18.5%
5 Years		8.0%	5.8%	4.5%	4.5%	7.8%	6.5%
6 Years		5.0%	2.9%	2.3%	2.3%	0.9%	3.3%
7 Years		2.5%	1.7%	3.6%	3.4%	0.9%	2.5%
8 Years		1.3%	0.6%	0.5%	0.0%	0.0%	0.7%
9 Years		1.3%	2.9%	2.3%	0.0%	0.9%	1.6%
10 Years or More		3.3%	2.3%	0.9%	2.3%	2.6%	2.4%
Missing Data		0.0%	0.0%	0.0%	0.0%	0.0%	0.0%
Graduating GPA (4 point scale)							
Mean		3.155	3.089	3.372	3.076	3.298	3.196
Std Dev		0.450	0.395	0.399	0.392	0.357	0.428

Southern Illinois University Edwardsville
Survey of 2011 Baccalaureate Graduates -- One Year Out

Comparison of All Graduates to Survey Respondents, cont.

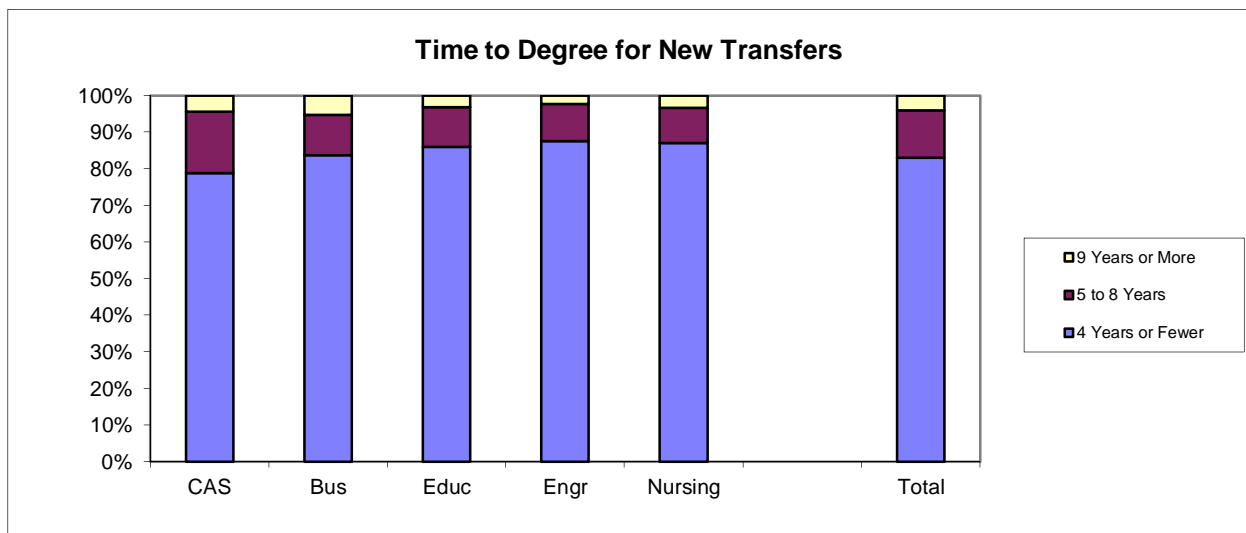
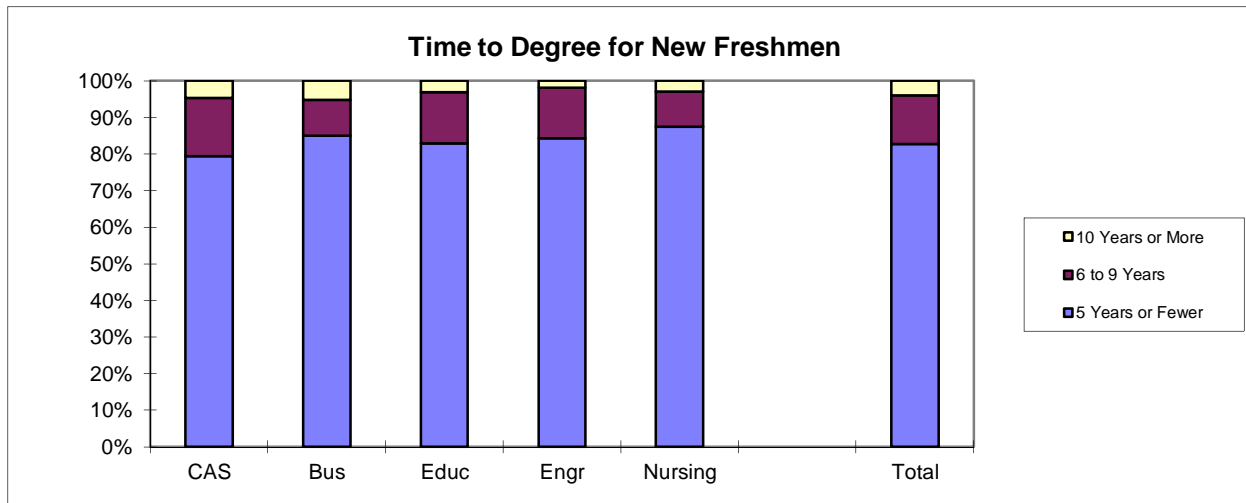
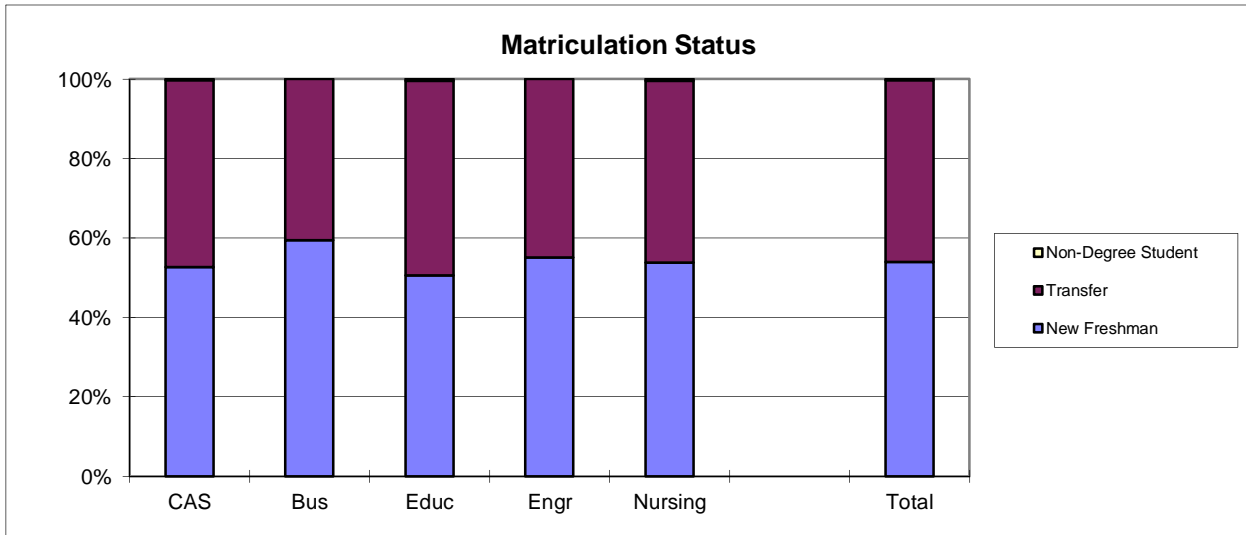
		All One Year Out Survey Respondents					
School Detail		CAS	BUS	EDU	ENG	NUR	Total
Total		163	95	103	37	73	471
Female		62.0%	56.8%	92.2%	10.8%	91.8%	68.2%
Male		38.0%	43.2%	7.8%	89.2%	8.2%	31.8%
Missing Data		0.0%	0.0%	0.0%	0.0%	0.0%	0.0%
White, Non-Hispanic		82.2%	85.3%	79.6%	89.2%	78.1%	82.2%
Black, Non-Hispanic		1.8%	3.2%	8.7%	0.0%	5.5%	4.0%
Asian/Pacific Islander		1.2%	1.1%	1.9%	0.0%	2.7%	1.5%
American Indian/Alaskan Native		0.0%	0.0%	1.0%	0.0%	1.4%	0.4%
Hispanic		3.1%	3.2%	1.9%	2.7%	1.4%	2.5%
Non-Resident Alien		0.0%	1.1%	0.0%	2.7%	0.0%	0.4%
Missing Data		11.7%	6.3%	6.8%	5.4%	11.0%	8.9%
Age at Graduation							
range		21 to 56	20 to 60	20 to 53	21 to 30	21 to 54	20 to 60
median		23.0	22.0	23.0	23.0	23.0	23.0
Bachelor of Science		65.6%	81.1%	97.1%	100.0%	100.0%	83.7%
Bachelor of Music		1.8%	0.0%	0.0%	0.0%	0.0%	0.6%
Bachelor of Arts		25.8%	0.0%	2.9%	0.0%	0.0%	9.6%
Bachelor of Fine Arts		1.2%	0.0%	0.0%	0.0%	0.0%	0.4%
Bachelor of Sci in Accountancy		0.0%	18.9%	0.0%	0.0%	0.0%	3.8%
Bachelor of Liberal Studies		1.2%	0.0%	0.0%	0.0%	0.0%	0.4%
Bachelor of Social Work		4.3%	0.0%	0.0%	0.0%	0.0%	1.5%
Missing Data		0.0%	0.0%	0.0%	0.0%	0.0%	0.0%
Graduated Spring 2011		59.5%	64.2%	81.6%	56.8%	69.9%	66.7%
Graduated Summer 2011		8.6%	11.6%	7.8%	13.5%	1.4%	8.3%
Graduated Fall 2011		31.9%	24.2%	10.7%	29.7%	28.8%	25.1%
Missing Data		0.0%	0.0%	0.0%	0.0%	0.0%	0.0%
Matriculated as a New Freshman		49.7%	60.0%	59.2%	67.6%	60.3%	56.9%
Matriculated as a Transfer		48.5%	35.8%	40.8%	32.4%	38.4%	41.4%
Matriculated as a Non-Degree Student		0.0%	0.0%	0.0%	0.0%	0.0%	0.0%
Missing Data		1.8%	4.2%	0.0%	0.0%	1.4%	1.7%
Time to Degree for New Freshmen							
3 Years or Fewer		6.2%	7.0%	13.1%	8.0%	6.8%	8.2%
4 Years		59.3%	59.6%	49.2%	64.0%	70.5%	59.3%
5 Years		24.7%	15.8%	24.6%	20.0%	15.9%	20.9%
6 Years		1.2%	7.0%	4.9%	4.0%	4.5%	4.1%
7 Years		0.0%	0.0%	4.9%	0.0%	0.0%	1.1%
8 Years		1.2%	1.8%	1.6%	4.0%	0.0%	1.5%
9 Years		0.0%	3.5%	0.0%	0.0%	0.0%	0.7%
10 Years		1.2%	1.8%	1.6%	0.0%	0.0%	1.1%
11 Years or More		6.2%	3.5%	0.0%	0.0%	2.3%	3.0%
Missing Data		0.0%	0.0%	0.0%	0.0%	0.0%	0.0%
Time to Degree for Transfers							
2 or Fewer Years		32.9%	52.9%	33.3%	50.0%	39.3%	38.5%
3 Years		36.7%	23.5%	38.1%	16.7%	28.6%	32.3%
4 Years		15.2%	8.8%	21.4%	33.3%	21.4%	17.4%
5 Years		7.6%	8.8%	4.8%	0.0%	3.6%	6.2%
6 Years		0.0%	0.0%	2.4%	0.0%	0.0%	0.5%
7 Years		2.5%	0.0%	0.0%	0.0%	3.6%	1.5%
8 Years		0.0%	0.0%	0.0%	0.0%	0.0%	0.0%
9 Years		1.3%	0.0%	0.0%	0.0%	0.0%	0.5%
10 Years or More		3.8%	5.9%	0.0%	0.0%	3.6%	3.1%
Missing Data		0.0%	0.0%	0.0%	0.0%	0.0%	0.0%
Graduating GPA (4 point scale)							
Mean		3.265	3.162	3.461	3.235	3.295	3.289
Std Dev		0.445	0.427	0.386	0.394	0.351	0.422

2011 Baccalaureate Recipients Profile



2011 Baccalaureate Recipients

Profile, cont.



Southern Illinois University Edwardsville
Survey of 2011 Baccalaureate Graduates -- One Year Out
Survey Responses -- Part I
Employment Questions

School Detail	CAS	BUS	EDU	ENG	NUR	Total
Number of Survey Respondents *	163	95	103	37	73	471
1. Number Employed:						
Full-time	59.5%	81.7%	52.0%	86.5%	95.9%	70.1%
Part-time	22.1%	11.8%	27.5%	2.7%	1.4%	16.5%
Not, but Seeking	10.4%	3.2%	8.8%	5.4%	2.7%	7.1%
Not, not Seeking	8.0%	3.2%	11.8%	5.4%	0.0%	6.4%
Number Responding	163	93	102	37	73	468
The remaining questions in Part I were to be answered only by respondents who were employed full-time or part-time.						
	133	87	81	33	71	405
2. Place of Employment						
Illinois	64.4%	64.6%	81.3%	60.6%	66.1%	67.8%
Missouri	27.1%	30.5%	13.3%	24.2%	23.7%	24.3%
Other	8.5%	4.9%	5.3%	15.2%	10.2%	7.9%
Number Responding	118	82	75	33	59	367
3. Classification of Primary Employer						
Self-Employed or Private Practice	0.8%	5.9%	3.8%	0.0%	0.0%	2.3%
Business (Industrial, Commercial or Service)	40.0%	64.7%	16.5%	53.1%	0.0%	34.5%
Professional Firm (e.g., Engineering, Law)	3.1%	12.9%	0.0%	28.1%	0.0%	6.0%
College or University	5.4%	2.4%	8.9%	3.1%	1.4%	4.5%
Elementary/Secondary School	14.6%	1.2%	40.5%	3.1%	0.0%	13.4%
Health Agency (e.g. Hospital, Clinic)	6.2%	3.5%	10.1%	0.0%	94.4%	21.7%
Federal, State, or Local Government	12.3%	5.9%	1.3%	9.4%	1.4%	6.5%
Armed Services	2.3%	1.2%	1.3%	3.1%	0.0%	1.5%
NonProfit (Non-Government)	5.4%	0.0%	11.4%	0.0%	2.8%	4.5%
Other	10.0%	2.4%	6.3%	0.0%	0.0%	5.0%
Number Responding	130	85	79	32	71	397
4. Job Satisfaction						
Very Satisfied	28.8%	24.1%	33.3%	57.6%	33.8%	31.9%
Satisfied	31.8%	39.1%	22.2%	24.2%	43.7%	32.9%
Somewhat Satisfied	22.0%	27.6%	30.9%	18.2%	18.3%	24.0%
Somewhat Dissatisfied	7.6%	3.4%	6.2%	0.0%	1.4%	4.7%
Dissatisfied	3.8%	5.7%	6.2%	0.0%	2.8%	4.2%
Very Dissatisfied	6.1%	0.0%	1.2%	0.0%	0.0%	2.2%
Number Responding	132	87	81	33	71	404
5. Job in Field?						
Closely Related	31.8%	43.7%	54.3%	51.5%	93.0%	51.2%
Related	26.5%	36.8%	27.2%	42.4%	7.0%	26.7%
Unrelated (choice unknown)	0.8%	1.1%	1.2%	0.0%	0.0%	0.7%
Unrelated (by choice)	13.6%	5.7%	8.6%	3.0%	0.0%	7.7%
Unrelated (not by choice)	27.3%	12.6%	8.6%	3.0%	0.0%	13.6%
Number Responding	132	87	81	33	71	404
6. Timing of Securing First Job After Degree						
Held the Same Job While Enrolled	22.6%	29.9%	22.2%	18.2%	11.3%	21.7%
Secured Job by Graduation	14.3%	14.9%	6.2%	48.5%	50.7%	22.0%
Secured Job After Graduation(timing unknown)	0.0%	0.0%	0.0%	0.0%	0.0%	0.0%
Less than 1 Month After Graduation	6.0%	8.0%	8.6%	3.0%	8.5%	7.2%
1 to 3 Months After Graduation	12.8%	12.6%	25.9%	24.2%	5.6%	15.1%
3 to 6 Months After Graduation	17.3%	14.9%	21.0%	3.0%	14.1%	15.8%
6 to 9 Months After Graduation	20.3%	10.3%	8.6%	0.0%	4.2%	11.4%
More than 9 Months After Graduation	6.8%	9.2%	7.4%	3.0%	5.6%	6.9%
Number Responding	133	87	81	33	71	405

Southern Illinois University Edwardsville
Survey of 2011 Baccalaureate Graduates -- One Year Out
Survey Responses -- Part I
Employment Questions

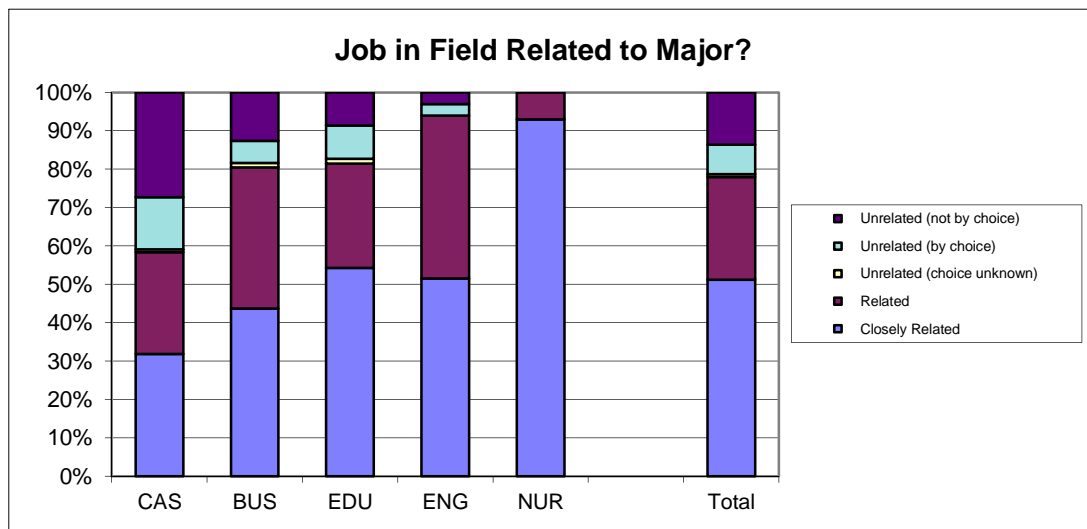
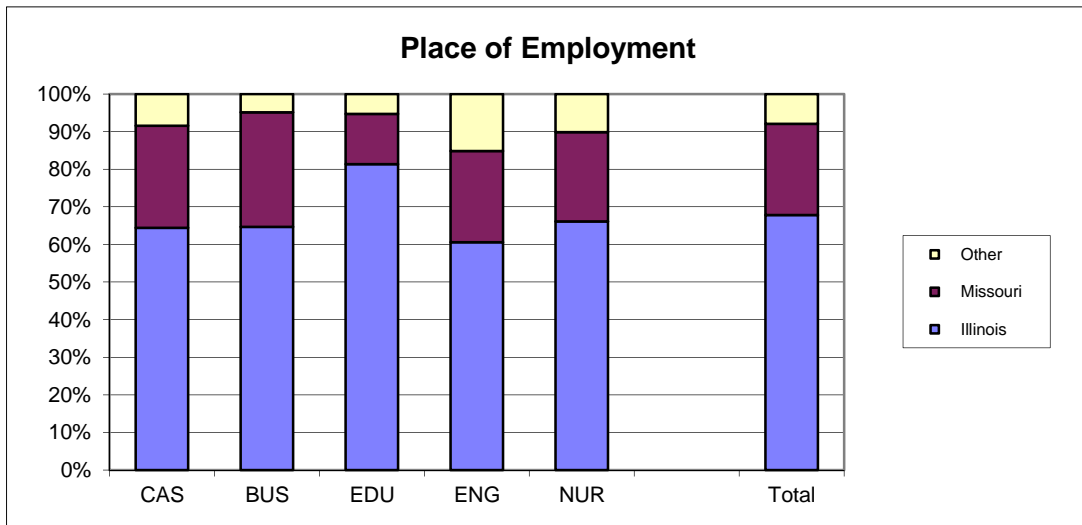
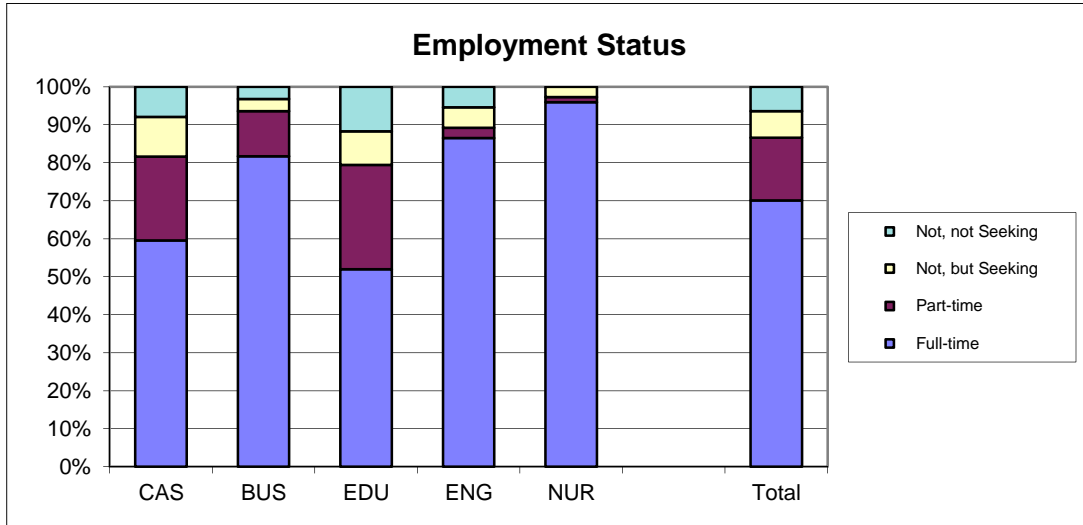
School Detail, cont.	CAS	BUS	EDU	ENG	NUR	Total
7. Annual Earned Income in Current Job Before Taxes						
Employed Full-Time						
Less Than \$15,000	3.3%	0.0%	4.5%	0.0%	0.0%	1.7%
\$15,000 to 19,999	5.6%	2.9%	11.4%	0.0%	0.0%	4.1%
\$20,000 to \$24,999	15.6%	5.7%	13.6%	0.0%	1.8%	8.5%
\$25,000 to \$29,999	17.8%	5.7%	25.0%	6.3%	0.0%	11.3%
\$30,000 to \$34,999	17.8%	24.3%	22.7%	6.3%	7.0%	16.7%
\$35,000 to \$39,999	15.6%	15.7%	20.5%	6.3%	19.3%	16.0%
\$40,000 or More	24.4%	45.7%	2.3%	81.3%	71.9%	41.6%
Number Responding	90	70	44	32	57	293
Mean Salary	\$33,450	\$40,629	\$27,492	\$50,216	\$43,256	\$38,009
Employed Part-Time						
Less Than \$5,000	3.8%	12.5%	5.0%	0.0%	0.0%	5.4%
5,000 to \$9,999	11.5%	0.0%	15.0%	0.0%	0.0%	10.7%
\$10,000 to \$14,999	34.6%	12.5%	50.0%	100.0%	0.0%	37.5%
\$15,000 to \$19,999	15.4%	37.5%	15.0%	0.0%	0.0%	17.9%
\$20,000 or More	34.6%	37.5%	15.0%	0.0%	100.0%	28.6%
Number Responding	26	8	20	1	1	56
Mean Salary	\$17,600	\$17,000	\$13,311	\$10,000	\$24,076	\$15,962
8. Bachelor's Degree Preparation for Job						
Very Well	12.5%	10.3%	31.6%	27.3%	29.6%	20.1%
Well	26.6%	43.7%	30.4%	21.2%	35.2%	32.2%
Adequately	39.1%	36.8%	21.5%	36.4%	29.6%	33.2%
Inadequately	14.1%	5.7%	8.9%	12.1%	2.8%	9.0%
Poorly	2.3%	3.4%	3.8%	3.0%	1.4%	2.8%
Very Poorly	5.5%	0.0%	3.8%	0.0%	1.4%	2.8%
Number Responding	128	87	79	33	71	398
9a. Primary Occupation						
Management	7.1%	10.5%	1.3%	0.0%	1.4%	5.1%
Business Operations	2.4%	14.0%	1.3%	3.1%	0.0%	4.3%
Financial Specialists	3.1%	20.9%	1.3%	0.0%	0.0%	5.8%
Computer Specialists	0.8%	18.6%	0.0%	15.6%	0.0%	5.6%
Mathematical Scientists and Technicians	0.8%	0.0%	0.0%	0.0%	0.0%	0.3%
Architects, Surveyors, and Cartographers	0.0%	1.2%	0.0%	0.0%	0.0%	0.3%
Engineers and Related Technicians	2.4%	1.2%	0.0%	59.4%	0.0%	5.8%
Life & Physical Scientists, and Technicians	9.4%	0.0%	0.0%	0.0%	0.0%	3.0%
Social Scientists	0.8%	1.2%	2.5%	0.0%	0.0%	1.0%
Health: Doctors	0.8%	0.0%	0.0%	0.0%	0.0%	0.3%
Health: Registered Nurses	0.0%	1.2%	0.0%	0.0%	98.6%	17.9%
Health: Therapists	0.0%	0.0%	3.8%	0.0%	0.0%	0.8%
Health: Oth Practitnrs, Prof.s, & Suppt Wkrs	2.4%	3.5%	2.5%	0.0%	0.0%	2.0%
Community & Social Service	7.1%	0.0%	12.5%	0.0%	0.0%	4.8%
Legal: Attorneys/Judges	0.0%	0.0%	0.0%	0.0%	0.0%	0.0%
Legal: Legal Support Workers	1.6%	0.0%	0.0%	0.0%	0.0%	0.5%
Education: Early Childhood Teachers	0.8%	0.0%	12.5%	0.0%	0.0%	2.8%
Education: Elementary School Teachers	1.6%	0.0%	22.5%	0.0%	0.0%	5.1%
Education: Middle School Teachers	1.6%	0.0%	1.3%	0.0%	0.0%	0.8%
Education: Secondary School Teachers	10.2%	0.0%	1.3%	3.1%	0.0%	3.8%
Education: Special Education Teachers	0.0%	0.0%	7.5%	0.0%	0.0%	1.5%
Education: Other, except Administrators	2.4%	2.3%	6.3%	3.1%	0.0%	2.8%
continued						

Southern Illinois University Edwardsville
Survey of 2011 Baccalaureate Graduates -- One Year Out
Survey Responses -- Part I
Employment Questions

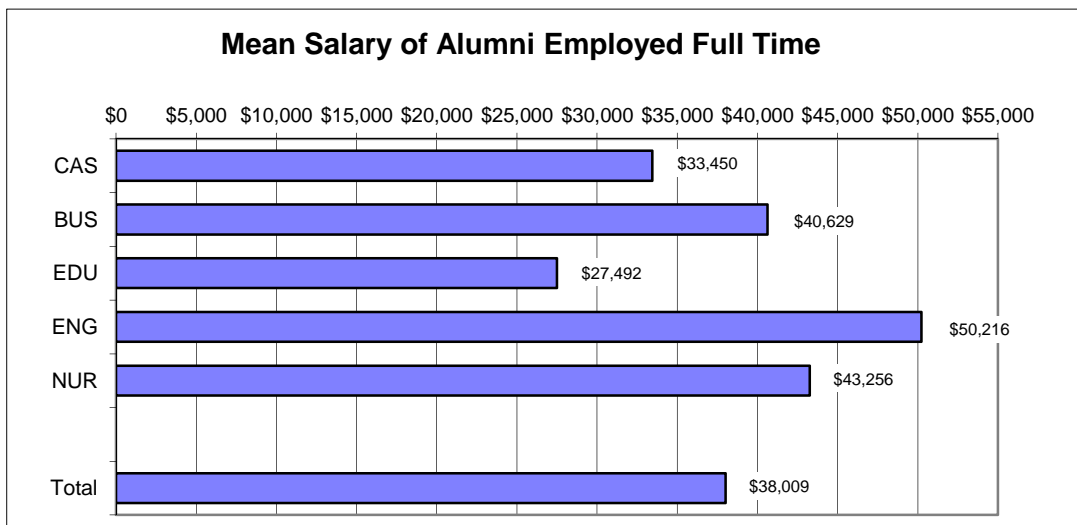
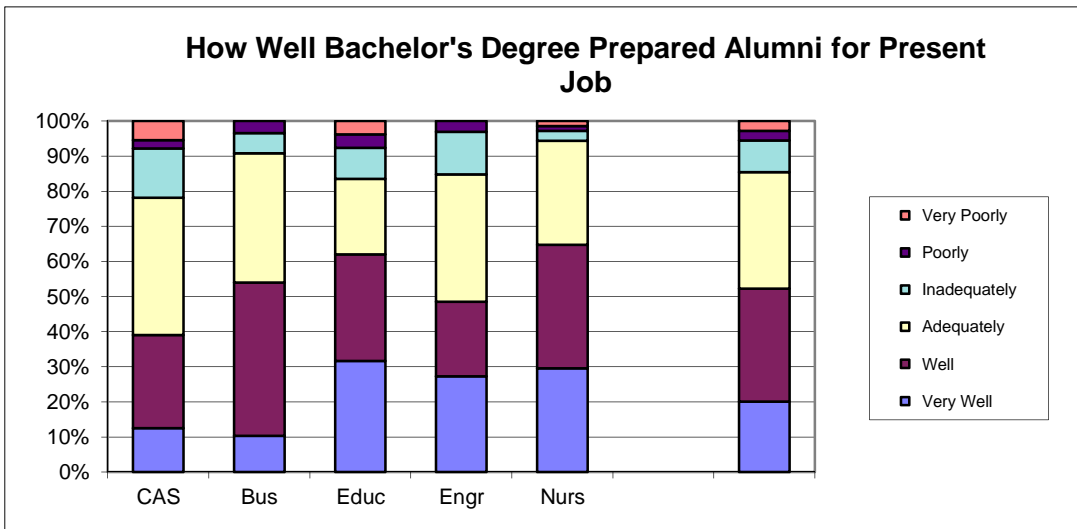
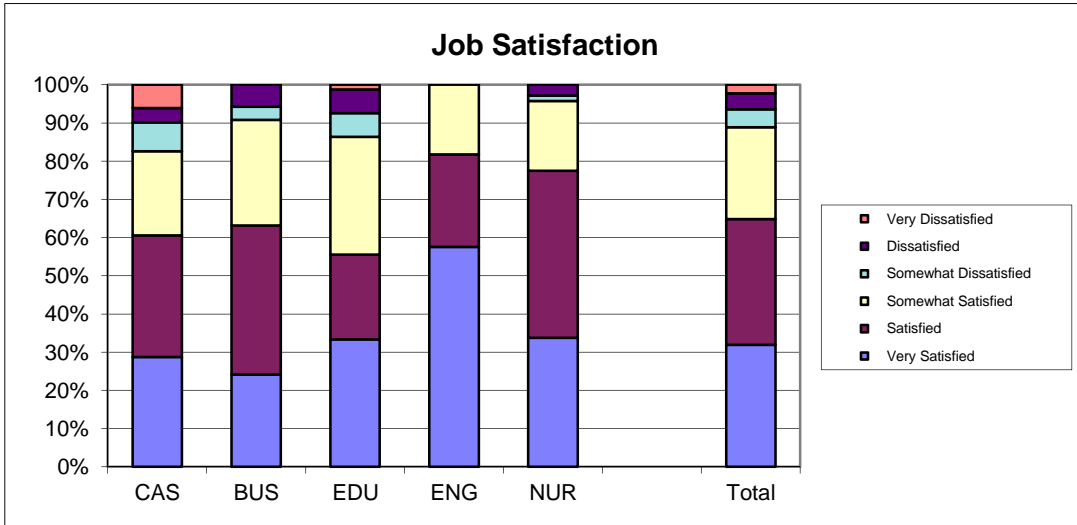
School Detail, cont.	CAS	BUS	EDU	ENG	NUR	Total
9a. continuation of Primary Occupation						
Library Occupations	1.6%	0.0%	0.0%	0.0%	0.0%	0.5%
Art and Design Workers	0.0%	0.0%	0.0%	0.0%	0.0%	0.0%
Entertainment, Performers, Sports & Related	1.6%	0.0%	0.0%	0.0%	0.0%	0.5%
Media and Communication Workers	4.7%	0.0%	0.0%	0.0%	0.0%	1.5%
Sales	10.2%	9.3%	6.3%	3.1%	0.0%	6.8%
Office & Administration	11.0%	10.5%	7.5%	0.0%	0.0%	7.3%
Protective Services	3.1%	0.0%	0.0%	0.0%	0.0%	1.0%
Food Preparation & Serving	4.7%	3.5%	5.0%	0.0%	0.0%	3.3%
Buildings & Grounds Maintenance	0.0%	0.0%	0.0%	0.0%	0.0%	0.0%
Personal Care and Service	1.6%	0.0%	3.8%	0.0%	0.0%	1.3%
Farming, Fishing, and Forestry	0.8%	0.0%	0.0%	0.0%	0.0%	0.3%
Construction & Extractive	0.8%	0.0%	0.0%	9.4%	0.0%	1.0%
Installation, Maintenance, & Repair	0.8%	0.0%	0.0%	0.0%	0.0%	0.3%
Production	0.8%	1.2%	0.0%	0.0%	0.0%	0.5%
Transportation and Material Moving	0.0%	1.2%	0.0%	0.0%	0.0%	0.3%
Military	3.1%	0.0%	1.3%	3.1%	0.0%	1.5%
Number Responding	127	86	80	32	71	396
9b. Industry						
Agriculture, Forestry, and Fishing	1.9%	1.2%	0.0%	0.0%	0.0%	0.9%
Mining	0.9%	0.0%	0.0%	6.7%	0.0%	0.9%
Utilities	0.9%	2.5%	1.5%	10.0%	0.0%	2.0%
Construction	1.9%	4.9%	0.0%	23.3%	0.0%	3.8%
Manufacturing	5.6%	9.9%	0.0%	16.7%	0.0%	5.5%
Wholesale Trade	0.0%	1.2%	0.0%	0.0%	0.0%	0.3%
Retail Trade	13.9%	8.6%	6.0%	3.3%	0.0%	7.8%
Transportation	1.9%	6.2%	0.0%	3.3%	0.0%	2.3%
Information	0.0%	3.7%	0.0%	0.0%	0.0%	0.9%
Finance & Insurance	5.6%	22.2%	4.5%	6.7%	0.0%	8.4%
Real Estate & Rental & Leasing	0.9%	2.5%	0.0%	0.0%	0.0%	0.9%
Professional, Scientific & Technical Services	9.3%	8.6%	4.5%	13.3%	0.0%	7.0%
Management of Companies & Enterprises	2.8%	6.2%	0.0%	0.0%	0.0%	2.3%
Admin & Suppt, Waste Mgmt & Remedtn Svcs	1.9%	1.2%	0.0%	0.0%	0.0%	0.9%
Educational Services	18.5%	2.5%	53.7%	6.7%	3.4%	18.0%
Health Care & Social Assistance	11.1%	4.9%	16.4%	3.3%	96.6%	24.6%
Arts, Entertainment & Recreation	8.3%	1.2%	3.0%	0.0%	0.0%	3.5%
Accommodations & Food Services	6.5%	2.5%	6.0%	0.0%	0.0%	3.8%
Other Services (except Public Admin)	6.5%	7.4%	4.5%	6.7%	0.0%	5.2%
Public Administration	1.9%	2.5%	0.0%	0.0%	0.0%	1.2%
Number Responding	108	81	67	30	59	345

3/14/2013

2011 Baccalaureate Graduates One Year Out Employment



2011 Baccalaureate Graduates One Year Out Employment, cont.

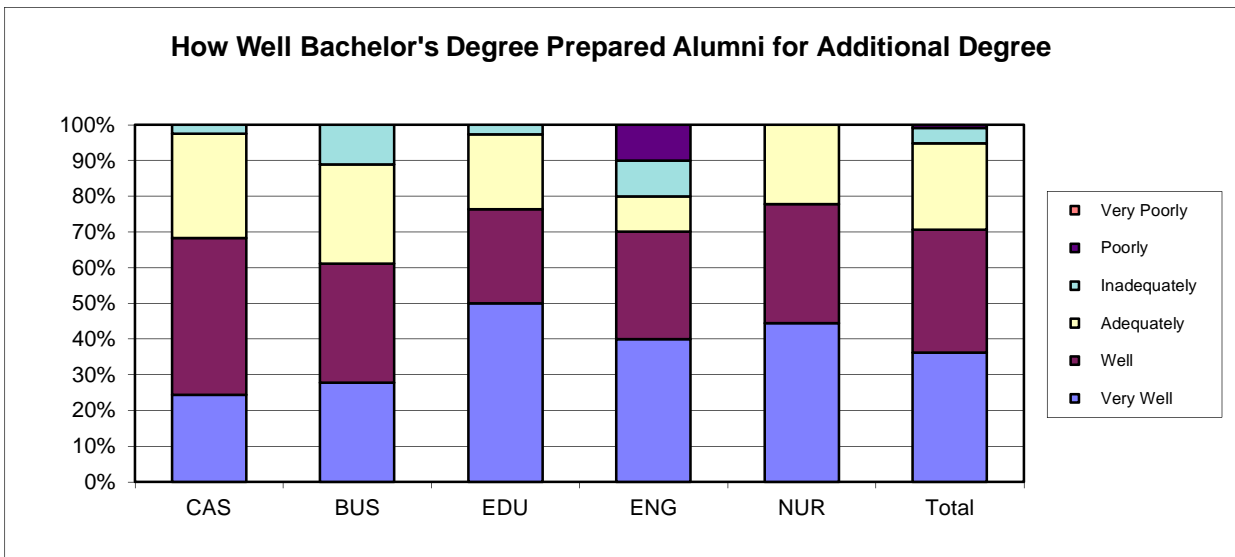
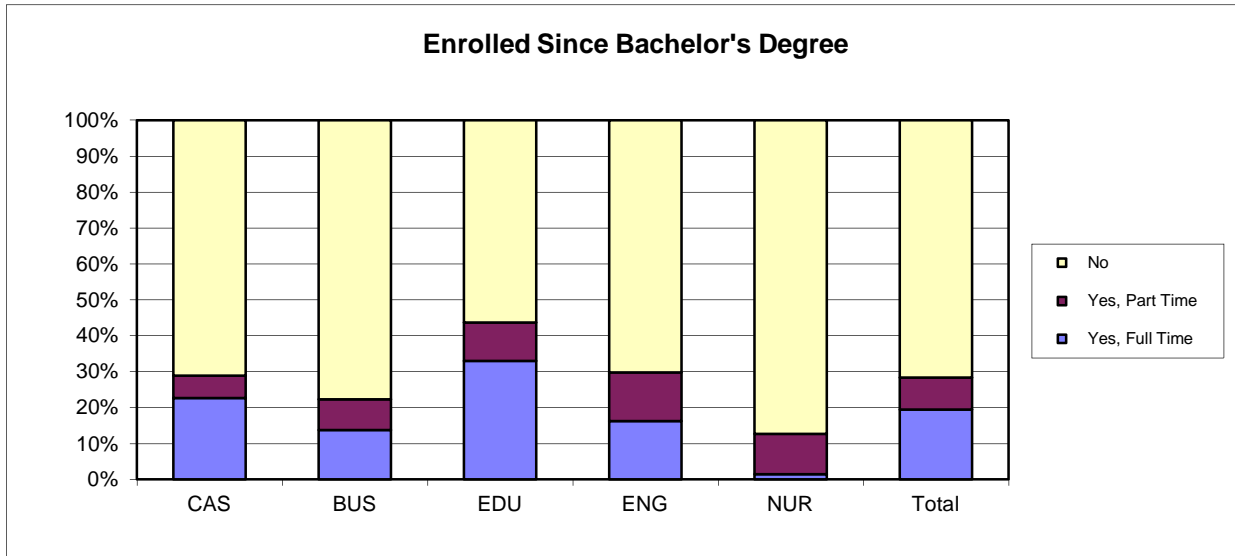


Southern Illinois University Edwardsville
Survey of 2011 Baccalaureate Graduates -- One Year Out
Survey Responses -- Part II
Education Questions

School Detail	CAS	BUS	EDU	ENG	NUR	Total
Number of Survey Respondents	163	95	103	37	73	471
10. Enrolled in College or University Since Degree?						
Yes, Full Time	22.7%	13.8%	33.0%	16.2%	1.4%	19.4%
Yes, Part Time	6.1%	8.5%	10.7%	13.5%	11.3%	9.0%
No	71.2%	77.7%	56.3%	70.3%	87.3%	71.6%
Number Responding	163	94	103	37	71	468
11. Pursuing or Have Completed an Additional Degree?						
Yes	100.0%	100.0%	100.0%	100.0%	100.0%	100.0%
No	0.0%	0.0%	0.0%	0.0%	0.0%	0.0%
Number Responding	41	18	40	10	9	118
The remaining questions in Part II were to be answered only by respondents who were pursuing or had completed another degree.						
	41	18	40	10	9	118
11b. Pursuing or Completed Which Degree?						
Associate's	0.0%	5.9%	5.1%	0.0%	0.0%	2.6%
Second Bachelor's	2.4%	11.8%	5.1%	0.0%	0.0%	4.3%
Academic Master's (MA, MS, MEd, etc)	56.1%	17.6%	66.7%	90.0%	44.4%	56.0%
Prof. Master's or Ed Specialist	17.1%	52.9%	5.1%	10.0%	33.3%	19.0%
Medicine (MD, OD)	4.9%	0.0%	0.0%	0.0%	11.1%	2.6%
Health Prof. (dentistry, pharmacy, etc.)	9.8%	0.0%	7.7%	0.0%	11.1%	6.9%
Theology/Divinity	0.0%	0.0%	0.0%	0.0%	0.0%	0.0%
Law (LLB, JD)	2.4%	11.8%	0.0%	0.0%	0.0%	2.6%
Doctorate (PhD, EdD, DA, DBA, etc.)	7.3%	0.0%	5.1%	0.0%	0.0%	4.3%
Other	0.0%	0.0%	5.1%	0.0%	0.0%	1.7%
Number Responding	41	17	39	10	9	116
12. How Well Bach. Degree Prepared You for Additional Degree						
Very Well	24.4%	27.8%	50.0%	40.0%	44.4%	36.2%
Well	43.9%	33.3%	26.3%	30.0%	33.3%	34.5%
Adequately	29.3%	27.8%	21.1%	10.0%	22.2%	24.1%
Inadequately	2.4%	11.1%	2.6%	10.0%	0.0%	4.3%
Poorly	0.0%	0.0%	0.0%	10.0%	0.0%	0.9%
Very Poorly	0.0%	0.0%	0.0%	0.0%	0.0%	0.0%
Number Responding	41	18	38	10	9	116

4/2/2013

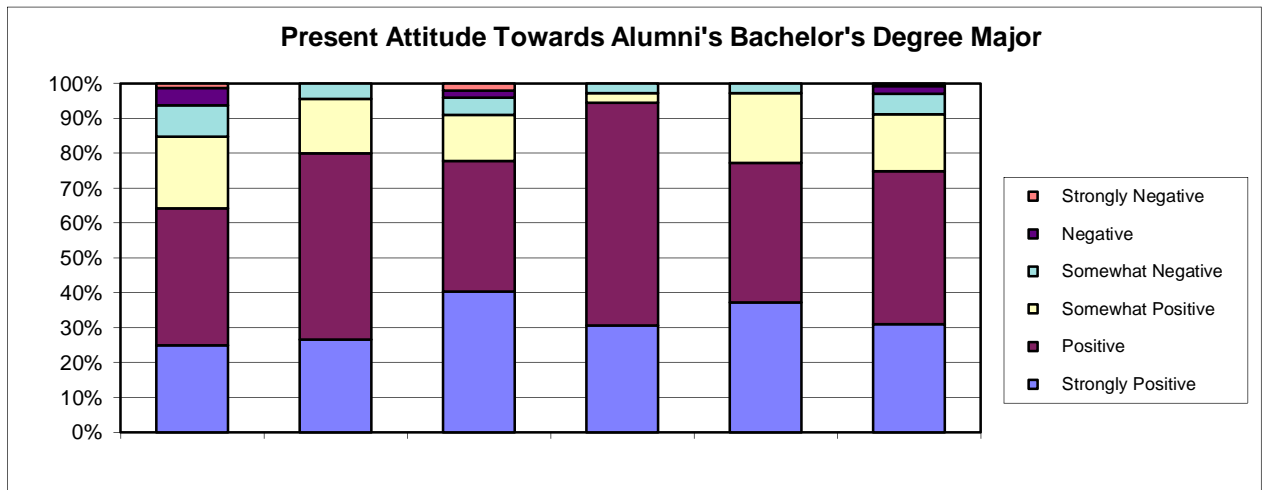
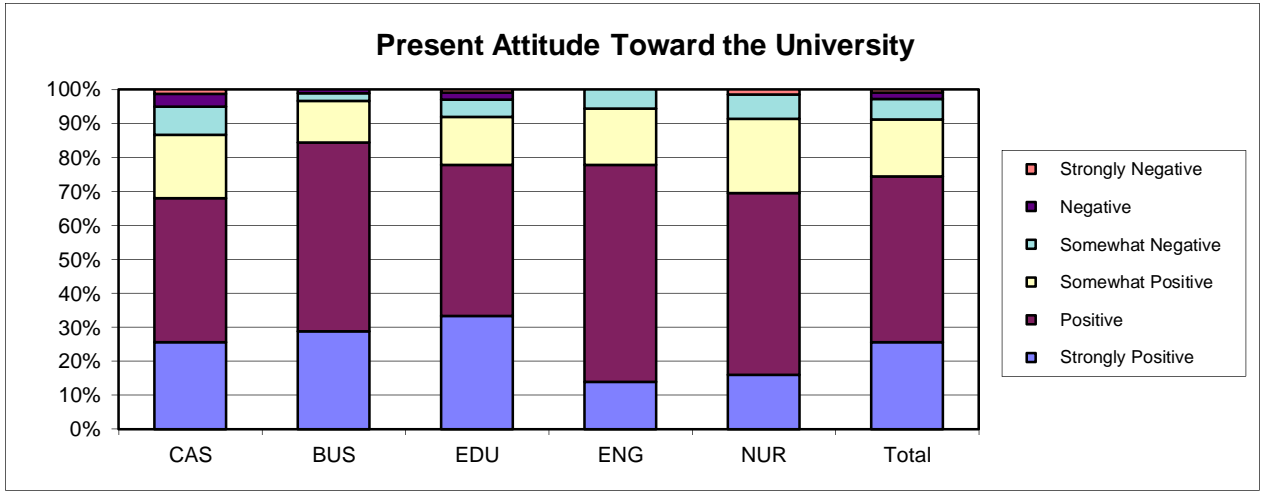
2011 Baccalaureate Graduates One Year Out Additional Education



Southern Illinois University Edwardsville
Survey of 2011 Baccalaureate Graduates -- One Year Out
Survey Responses -- Part III
Satisfaction Questions

School Detail	CAS	BUS	EDU	ENG	NUR	Total
Number of Survey Respondents	163	95	103	37	73	471
13. Present Attitude Towards the University						
Strongly Positive	25.6%	28.9%	33.3%	13.9%	15.9%	25.6%
Positive	42.3%	55.6%	44.4%	63.9%	53.6%	48.9%
Somewhat Positive	18.6%	12.2%	14.1%	16.7%	21.7%	16.7%
Somewhat Negative	8.3%	2.2%	5.1%	5.6%	7.2%	6.0%
Negative	3.8%	1.1%	2.0%	0.0%	0.0%	2.0%
Strongly Negative	1.3%	0.0%	1.0%	0.0%	1.4%	0.9%
Number Responding	156	90	99	36	69	450
14. Present Attitude Towards your Bachelor's Degree Major						
Strongly Positive	25.0%	26.7%	40.4%	30.6%	37.1%	31.0%
Positive	39.1%	53.3%	37.4%	63.9%	40.0%	43.7%
Somewhat Positive	20.5%	15.6%	13.1%	2.8%	20.0%	16.4%
Somewhat Negative	9.0%	4.4%	5.1%	2.8%	2.9%	5.8%
Negative	5.1%	0.0%	2.0%	0.0%	0.0%	2.2%
Strongly Negative	1.3%	0.0%	2.0%	0.0%	0.0%	0.9%
Number Responding	156	90	99	36	70	451
04/16/2013						

2011 Baccalaureate Graduates One Year Out Satisfaction



Southern Illinois University Edwardsville
Survey of 2011 Baccalaureate Graduates -- One Year Out
Survey Responses -- Part IV
Educational Practices Questions

School Detail	CAS	BUS	EDU	ENG	NUR	Total
Number of Survey Respondents	163	95	103	37	73	471
15. Faculty in Major Were Accessible Outside of Class						
Very Often	41.9%	36.6%	51.0%	47.2%	26.0%	40.7%
Often	41.9%	60.2%	37.3%	38.9%	50.7%	45.7%
Sometimes	13.1%	2.2%	10.8%	13.9%	19.2%	11.4%
Infrequently	3.1%	1.1%	1.0%	0.0%	4.1%	2.2%
Never	0.0%	0.0%	0.0%	0.0%	0.0%	0.0%
Number Responding	160	93	102	36	73	464
16. In Major, Student was Expected to Work Cooperatively with Other Students						
Very Often	31.7%	60.6%	70.6%	32.4%	57.5%	50.1%
Often	39.1%	34.0%	23.5%	48.6%	35.6%	34.9%
Sometimes	26.7%	5.3%	4.9%	18.9%	5.5%	13.7%
Infrequently	2.5%	0.0%	1.0%	0.0%	1.4%	1.3%
Never	0.0%	0.0%	0.0%	0.0%	0.0%	0.0%
Number Responding	161	94	102	37	73	467
17. In Major, Faculty Encouraged Student to Challenge Ideas (student's, other students, and in readings & materials)						
Very Often	30.4%	19.1%	47.1%	24.3%	18.1%	29.4%
Often	34.2%	40.4%	32.4%	37.8%	48.6%	37.6%
Sometimes	24.2%	35.1%	17.6%	21.6%	22.2%	24.5%
Infrequently	9.3%	5.3%	2.0%	13.5%	9.7%	7.3%
Never	1.9%	0.0%	1.0%	2.7%	1.4%	1.3%
Number Responding	161	94	102	37	72	466
18. In Major, Faculty Used Appropriate Teaching Activities to Help Student Learn						
Very Often	36.6%	22.3%	50.0%	21.6%	15.3%	32.2%
Often	37.9%	61.7%	37.3%	45.9%	43.1%	44.0%
Sometimes	19.9%	16.0%	10.8%	29.7%	33.3%	20.0%
Infrequently	5.0%	0.0%	1.0%	2.7%	6.9%	3.2%
Never	0.6%	0.0%	1.0%	0.0%	1.4%	0.6%
Number Responding	161	94	102	37	72	466
19. In Major, Faculty had High Expectations for Quality Of Student Work						
Very Often	41.0%	29.8%	51.0%	32.4%	37.0%	39.6%
Often	37.9%	50.0%	37.3%	45.9%	43.8%	41.8%
Sometimes	18.6%	18.1%	8.8%	21.6%	17.8%	16.5%
Infrequently	2.5%	2.1%	2.0%	0.0%	1.4%	1.9%
Never	0.0%	0.0%	1.0%	0.0%	0.0%	0.2%
Number Responding	161	94	102	37	73	467
20. In Major, Faculty Provided Timely Feedback						
Very Often	34.6%	20.7%	36.3%	24.3%	19.2%	29.0%
Often	35.2%	59.8%	41.2%	43.2%	54.8%	45.1%
Sometimes	22.8%	17.4%	20.6%	29.7%	19.2%	21.2%
Infrequently	6.2%	2.2%	2.0%	2.7%	5.5%	4.1%
Never	1.2%	0.0%	0.0%	0.0%	1.4%	0.6%
Number Responding	162	92	102	37	73	466

Southern Illinois University Edwardsville
Survey of 2011 Baccalaureate Graduates -- One Year Out
Survey Responses -- Part IV
Educational Practices Questions

School Detail, cont.	CAS	BUS	EDU	ENG	NUR	Total
21. In Major, Faculty Encouraged Students' Questions and Discussion in Class						
Very Often	45.3%	47.9%	60.8%	40.5%	27.4%	46.0%
Often	35.4%	43.6%	29.4%	35.1%	49.3%	37.9%
Sometimes	16.8%	7.4%	6.9%	24.3%	19.2%	13.7%
Infrequently	2.5%	1.1%	2.0%	0.0%	2.7%	1.9%
Never	0.0%	0.0%	1.0%	0.0%	1.4%	0.4%
Number Responding	161	94	102	37	73	467
22. In Major, Student Spent Necessary Time and Energy to Come to Class Prepared						
Very Often	48.1%	40.4%	57.8%	45.9%	47.2%	48.4%
Often	43.2%	48.9%	36.3%	43.2%	44.4%	43.0%
Sometimes	8.0%	10.6%	5.9%	8.1%	6.9%	7.9%
Infrequently	0.6%	0.0%	0.0%	2.7%	1.4%	0.6%
Never	0.0%	0.0%	0.0%	0.0%	0.0%	0.0%
Number Responding	162	94	102	37	72	467

04/16/2013

Southern Illinois University Edwardsville
Survey of 2011 Baccalaureate Graduates -- One Year Out
Survey Responses -- Part V
Program Quality Questions

School Detail	CAS	BUS	EDU	ENG	NUR	Total
Number of Survey Respondents	163	95	103	37	73	471
23A. Quality of Major in Offering						
Sufficient Courses						
Excellent	29.6%	41.5%	51.5%	30.6%	39.7%	38.5%
Good	44.4%	47.9%	40.8%	47.2%	47.9%	45.1%
Fair	18.5%	10.6%	6.8%	16.7%	11.0%	13.0%
Poor	7.4%	0.0%	1.0%	5.6%	1.4%	3.4%
Number Responding	162	94	103	36	73	468
23B. Quality of Major in Offering						
Convenient Class Times						
Excellent	17.4%	27.7%	42.7%	32.4%	25.0%	27.4%
Good	45.3%	51.1%	37.9%	37.8%	47.2%	44.5%
Fair	29.8%	19.1%	16.5%	27.0%	23.6%	23.6%
Poor	7.5%	2.1%	2.9%	2.7%	4.2%	4.5%
Number Responding	161	94	103	37	72	467
23C. Quality of Major in Offering						
Logical Class Sequences						
Excellent	26.9%	38.3%	47.6%	43.2%	30.0%	35.6%
Good	45.6%	51.1%	43.7%	29.7%	45.7%	45.0%
Fair	25.0%	7.4%	7.8%	27.0%	20.0%	17.0%
Poor	2.5%	3.2%	1.0%	0.0%	4.3%	2.4%
Number Responding	160	94	103	37	70	464
24 Quality of Faculty in Major						
Excellent	45.9%	37.2%	61.8%	33.3%	30.0%	44.3%
Good	40.3%	57.4%	29.4%	58.3%	40.0%	42.7%
Fair	13.8%	5.3%	6.9%	8.3%	24.3%	11.7%
Poor	0.0%	0.0%	2.0%	0.0%	5.7%	1.3%
Number Responding	159	94	102	36	70	461
25 Grading Standards in Major Were:						
Too High	3.1%	1.1%	3.9%	5.4%	12.5%	4.5%
About Right	92.6%	92.6%	90.3%	89.2%	83.3%	90.4%
Too Low	4.3%	6.4%	5.8%	5.4%	4.2%	5.1%
Number Responding	162	94	103	37	72	468
04/16/2013						

Southern Illinois University Edwardsville
Survey of 2011 Baccalaureate Graduates -- One Year Out
Survey Responses -- Part VI
Educational Effectiveness Questions

School Detail	CAS	BUS	EDU	ENG	NUR	Total
Number of Survey Respondents	163	95	103	37	73	471
26. Helpfulness of University Experiences in:						
A. Developing Critical Thinking Ability						
Extremely Helpful	25.9%	14.7%	21.8%	18.9%	16.7%	20.8%
Very Helpful	40.7%	54.7%	48.5%	43.2%	50.0%	46.9%
Moderately Helpful	21.6%	27.4%	22.8%	37.8%	30.6%	25.7%
Slightly Helpful	8.0%	3.2%	5.9%	0.0%	2.8%	5.1%
Not Helpful	3.7%	0.0%	1.0%	0.0%	0.0%	1.5%
Number Responding	162	95	101	37	72	467
B. Developing Sense of Ethics						
Extremely Helpful	20.4%	16.8%	20.8%	18.9%	18.1%	19.3%
Very Helpful	29.6%	53.7%	45.5%	37.8%	45.8%	41.1%
Moderately Helpful	33.3%	22.1%	26.7%	32.4%	30.6%	29.1%
Slightly Helpful	9.3%	4.2%	3.0%	5.4%	5.6%	6.0%
Not Helpful	7.4%	3.2%	4.0%	5.4%	0.0%	4.5%
Number Responding	162	95	101	37	72	467
C. Understanding People with Different Backgrounds, Habits, Values, Appearances and Abilities						
Extremely Helpful	32.7%	16.8%	34.7%	13.5%	23.6%	27.0%
Very Helpful	29.0%	49.5%	37.6%	48.6%	41.7%	38.5%
Moderately Helpful	21.6%	22.1%	21.8%	21.6%	31.9%	23.3%
Slightly Helpful	10.5%	9.5%	4.0%	8.1%	2.8%	7.5%
Not Helpful	6.2%	2.1%	2.0%	8.1%	0.0%	3.6%
Number Responding	162	95	101	37	72	467
D. Becoming a More Active Citizen						
Extremely Helpful	13.6%	10.6%	16.8%	2.7%	15.5%	13.1%
Very Helpful	22.8%	24.5%	23.8%	27.0%	29.6%	24.7%
Moderately Helpful	28.4%	38.3%	33.7%	27.0%	33.8%	32.3%
Slightly Helpful	20.4%	19.1%	19.8%	27.0%	16.9%	20.0%
Not Helpful	14.8%	7.4%	5.9%	16.2%	4.2%	9.9%
Number Responding	162	94	101	37	71	465
E. Improving Quality of Life (aside from financial benefits)						
Extremely Helpful	16.7%	11.8%	20.8%	10.8%	18.6%	16.4%
Very Helpful	29.6%	44.1%	34.7%	27.0%	28.6%	33.3%
Moderately Helpful	27.8%	25.8%	24.8%	40.5%	31.4%	28.3%
Slightly Helpful	13.0%	16.1%	12.9%	18.9%	17.1%	14.7%
Not Helpful	13.0%	2.2%	6.9%	2.7%	4.3%	7.3%
Number Responding	162	93	101	37	70	463
F. Developing Reasoning Skills						
Extremely Helpful	23.0%	17.9%	31.7%	21.6%	18.1%	23.0%
Very Helpful	41.6%	50.5%	40.6%	45.9%	41.7%	43.6%
Moderately Helpful	23.0%	23.2%	20.8%	32.4%	30.6%	24.5%
Slightly Helpful	9.9%	7.4%	5.9%	0.0%	9.7%	7.7%
Not Helpful	2.5%	1.1%	1.0%	0.0%	0.0%	1.3%
Number Responding	161	95	101	37	72	466

Southern Illinois University Edwardsville
Survey of 2011 Baccalaureate Graduates -- One Year Out
Survey Responses -- Part VI
Educational Effectiveness Questions

School Detail, cont.	CAS	BUS	EDU	ENG	NUR	Total
G. Viewing Problems from Different Perspectives						
Extremely Helpful	25.9%	24.2%	33.7%	18.9%	19.4%	25.7%
Very Helpful	37.7%	52.6%	43.6%	51.4%	40.3%	43.5%
Moderately Helpful	23.5%	17.9%	14.9%	24.3%	27.8%	21.2%
Slightly Helpful	8.6%	5.3%	6.9%	5.4%	12.5%	7.9%
Not Helpful	4.3%	0.0%	1.0%	0.0%	0.0%	1.7%
Number Responding	162	95	101	37	72	467
H. Developing Ability to Solve Problems						
Extremely Helpful	28.0%	22.3%	33.0%	21.6%	12.9%	25.1%
Very Helpful	32.9%	52.1%	37.0%	59.5%	54.3%	43.1%
Moderately Helpful	28.0%	21.3%	22.0%	16.2%	25.7%	24.0%
Slightly Helpful	8.1%	4.3%	7.0%	2.7%	7.1%	6.5%
Not Helpful	3.1%	0.0%	1.0%	0.0%	0.0%	1.3%
Number Responding	161	94	100	37	70	462
I. Making Informed Decisions as a Citizen						
Extremely Helpful	20.5%	24.5%	25.7%	13.5%	16.7%	21.3%
Very Helpful	36.6%	45.7%	32.7%	40.5%	37.5%	38.1%
Moderately Helpful	27.3%	17.0%	26.7%	18.9%	27.8%	24.5%
Slightly Helpful	8.1%	10.6%	12.9%	21.6%	15.3%	11.8%
Not Helpful	7.5%	2.1%	2.0%	5.4%	2.8%	4.3%
Number Responding	161	94	101	37	72	465
J. Developing Writing Skills						
Extremely Helpful	33.1%	22.1%	35.6%	10.8%	16.7%	27.1%
Very Helpful	35.6%	38.9%	31.7%	32.4%	37.5%	35.5%
Moderately Helpful	14.4%	30.5%	21.8%	32.4%	25.0%	22.4%
Slightly Helpful	13.1%	6.3%	7.9%	16.2%	18.1%	11.6%
Not Helpful	3.8%	2.1%	3.0%	8.1%	2.8%	3.4%
Number Responding	160	95	101	37	72	465
K. Developing Oral Communication Skills						
Extremely Helpful	31.5%	28.4%	37.6%	10.8%	15.3%	28.1%
Very Helpful	32.7%	47.4%	35.6%	56.8%	47.2%	40.5%
Moderately Helpful	21.6%	17.9%	18.8%	18.9%	19.4%	19.7%
Slightly Helpful	9.3%	6.3%	6.9%	10.8%	18.1%	9.6%
Not Helpful	4.9%	0.0%	1.0%	2.7%	0.0%	2.1%
Number Responding	162	95	101	37	72	467
L. Developing Knowledge of Scientific and Technological Developments						
Extremely Helpful	21.0%	17.9%	18.8%	29.7%	20.8%	20.6%
Very Helpful	28.4%	30.5%	35.6%	56.8%	40.3%	34.5%
Moderately Helpful	24.1%	41.1%	27.7%	13.5%	31.9%	28.7%
Slightly Helpful	20.4%	9.5%	12.9%	0.0%	6.9%	12.8%
Not Helpful	6.2%	1.1%	5.0%	0.0%	0.0%	3.4%
Number Responding	162	95	101	37	72	467

Southern Illinois University Edwardsville
Survey of 2011 Baccalaureate Graduates -- One Year Out
Survey Responses -- Part VI
Educational Effectiveness Questions

School Detail, cont.	CAS	BUS	EDU	ENG	NUR	Total
27. Undergraduate Education Broadened Interest Beyond Subjects in Major						
Strongly Agree	23.6%	13.7%	24.3%	2.7%	15.1%	18.8%
Agree	48.4%	62.1%	45.6%	62.2%	38.4%	50.1%
Neutral	21.7%	15.8%	24.3%	27.0%	27.4%	22.4%
Disagree	5.0%	8.4%	3.9%	8.1%	19.2%	7.9%
Strongly Disagree	1.2%	0.0%	1.9%	0.0%	0.0%	0.9%
Number Responding	161	95	103	37	73	469
28. Importance of College Education to:						
A. Personal Life						
Very Important	66.0%	58.9%	68.6%	45.9%	61.6%	62.9%
Moderately Important	22.2%	28.4%	24.5%	35.1%	31.5%	26.4%
Slightly Important	6.8%	9.5%	5.9%	16.2%	6.8%	7.9%
Not Important	4.9%	3.2%	1.0%	2.7%	0.0%	2.8%
Number Responding	162	95	102	37	73	469
B. Community Life						
Very Important	36.4%	33.7%	55.9%	13.5%	46.6%	39.9%
Moderately Important	29.0%	34.7%	26.5%	37.8%	35.6%	31.3%
Slightly Important	17.9%	21.1%	10.8%	32.4%	16.4%	17.9%
Not Important	16.7%	10.5%	6.9%	16.2%	1.4%	10.9%
Number Responding	162	95	102	37	73	469
C. Professional Life						
Very Important	58.4%	76.8%	81.6%	86.5%	89.0%	74.2%
Moderately Important	16.1%	16.8%	8.7%	8.1%	9.6%	13.0%
Slightly Important	16.1%	3.2%	6.8%	5.4%	1.4%	8.3%
Not Important	9.3%	3.2%	2.9%	0.0%	0.0%	4.5%
Number Responding	161	95	103	37	73	469
29. Quality of SIUE Education Relative to That of Friends at Other Schools						
Among the Best	13.1%	18.9%	26.0%	13.5%	16.4%	17.6%
Above Average	43.8%	55.8%	47.0%	62.2%	42.5%	48.2%
Average	33.1%	24.2%	25.0%	21.6%	31.5%	28.4%
Below Average	8.8%	1.1%	1.0%	2.7%	9.6%	5.2%
Among the Worst	1.3%	0.0%	1.0%	0.0%	0.0%	0.6%
Number Responding	160	95	100	37	73	465
30. Involvement Since Bachelor's Degree with:						
A. Organized, Formal, Career Related Learning (non-degree)						
Currently Involved	25.8%	18.5%	31.6%	27.8%	42.5%	28.4%
Have Been Involved	30.2%	41.3%	37.8%	44.4%	35.6%	36.0%
Never Involved	44.0%	40.2%	30.6%	27.8%	21.9%	35.6%
Number Responding	159	92	98	36	73	458
B. Personal Enrichment Studies						
Currently Involved	22.6%	12.9%	19.4%	35.1%	13.7%	19.6%
Have Been Involved	31.4%	31.2%	32.7%	27.0%	32.9%	31.5%
Never Involved	45.9%	55.9%	48.0%	37.8%	53.4%	48.9%
Number Responding	159	93	98	37	73	460

Southern Illinois University Edwardsville
Survey of 2011 Baccalaureate Graduates -- One Year Out
Survey Responses -- Part VI
Educational Effectiveness Questions

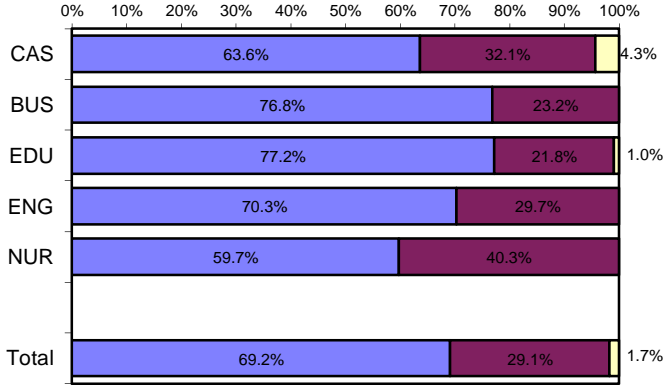
School Detail, cont.	CAS	BUS	EDU	ENG	NUR	Total
C. Professional Activities or Organizations						
Currently Involved	38.1%	28.0%	34.3%	43.2%	37.5%	35.6%
Have Been Involved	28.1%	36.6%	43.4%	32.4%	43.1%	35.8%
Never Involved	33.8%	35.5%	22.2%	24.3%	19.4%	28.6%
Number Responding	160	93	99	37	72	461
D. Volunteer Work / Community Svc Activities or Organizations						
Currently Involved	28.1%	20.2%	38.4%	13.5%	27.8%	27.5%
Have Been Involved	36.3%	37.2%	39.4%	43.2%	48.6%	39.6%
Never Involved	35.6%	42.6%	22.2%	43.2%	23.6%	32.9%
Number Responding	160	94	99	37	72	462
E. Social / Recreational Activities or Organizations						
Currently Involved	36.3%	37.6%	46.0%	37.8%	37.5%	39.0%
Have Been Involved	35.6%	37.6%	35.0%	37.8%	30.6%	35.3%
Never Involved	28.1%	24.7%	19.0%	24.3%	31.9%	25.8%
Number Responding	160	93	100	37	72	462
F. Political Activities or Organizations						
Currently Involved	6.9%	5.4%	7.0%	5.4%	6.8%	6.5%
Have Been Involved	15.0%	16.3%	9.0%	18.9%	24.7%	15.8%
Never Involved	78.1%	78.3%	84.0%	75.7%	68.5%	77.7%
Number Responding	160	92	100	37	73	462
G. Religious / Ethical Activities or Organizations						
Currently Involved	26.3%	21.3%	29.0%	29.7%	20.5%	25.2%
Have Been Involved	23.1%	27.7%	26.0%	24.3%	28.8%	25.6%
Never Involved	50.6%	51.1%	45.0%	45.9%	50.7%	49.1%
Number Responding	160	94	100	37	73	464
H. Support or Participation in the Arts (music, drama, dance, art)						
Currently Involved	25.6%	8.6%	17.0%	10.8%	6.8%	16.2%
Have Been Involved	25.6%	24.7%	37.0%	29.7%	37.0%	30.0%
Never Involved	48.8%	66.7%	46.0%	59.5%	56.2%	53.8%
Number Responding	160	93	100	37	73	463
I. Reading books not directly related to your job						
Currently Involved	66.9%	55.3%	69.0%	48.6%	57.5%	62.1%
Have Been Involved	21.9%	17.0%	25.0%	18.9%	28.8%	22.4%
Never Involved	11.3%	27.7%	6.0%	32.4%	13.7%	15.5%
Number Responding	160	94	100	37	73	464

04/16/2013

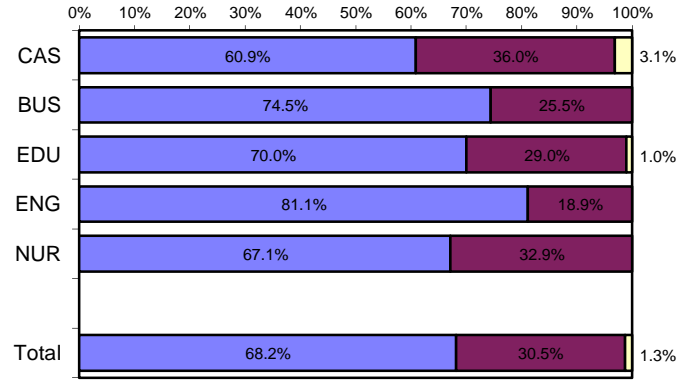
Helpfulness of University Experiences in:

■ Very to Extremely Helpful
 ■ Slightly to Moderately Helpful
 ■ Not Helpful

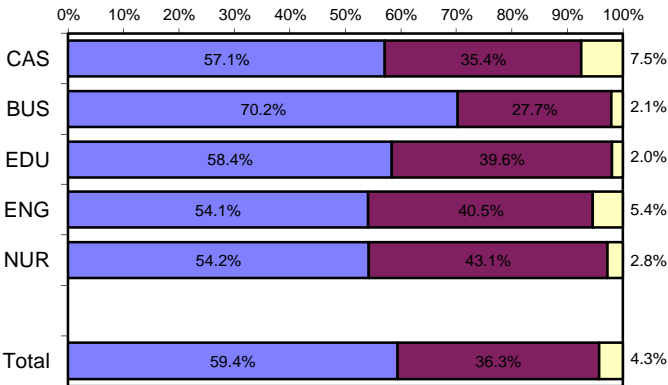
Viewing Problems from Different Perspectives



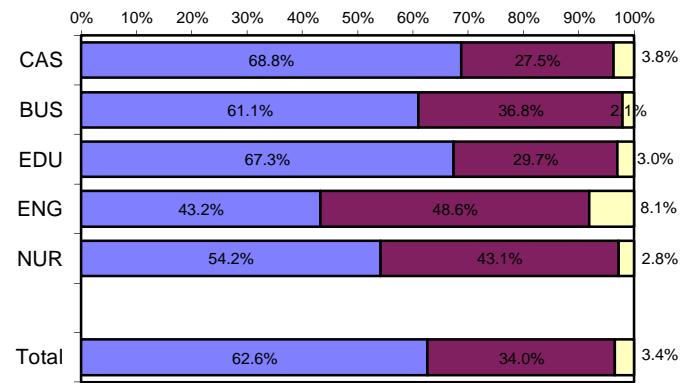
Developing Ability to Solve Problems



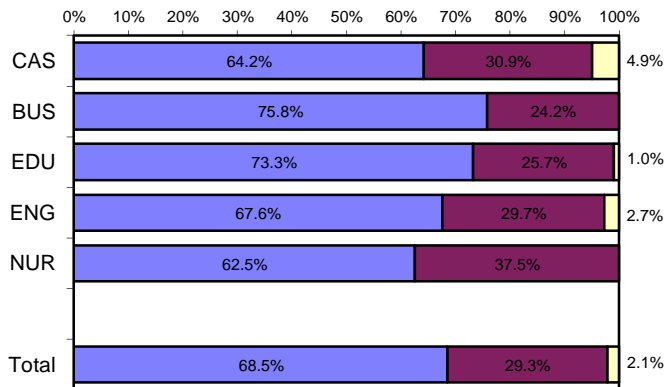
Making Informed Decisions as a Citizen



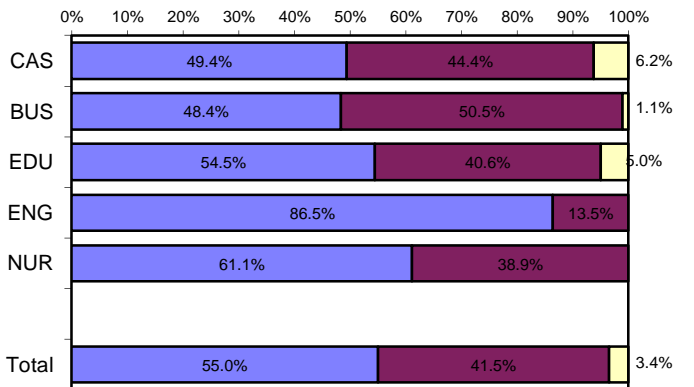
Developing Writing Skills



Developing Oral Communication Skills



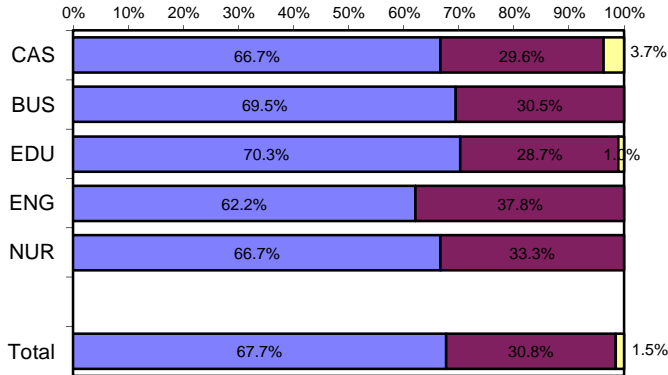
Developing Knowledge of Scientific and Technological Developments



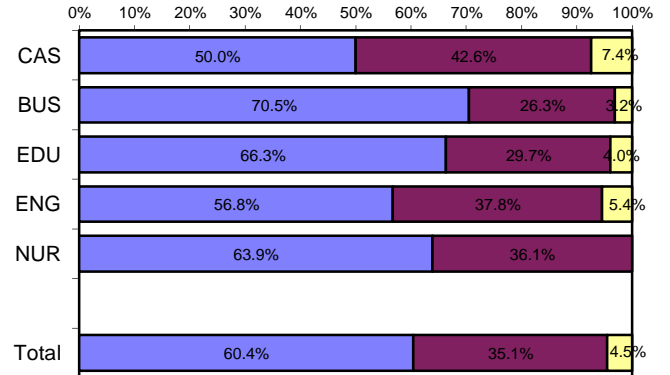
Helpfulness of University Experiences in:

■ Very to Extremely Helpful
 ■ Slightly to Moderately Helpful
 ■ Not Helpful

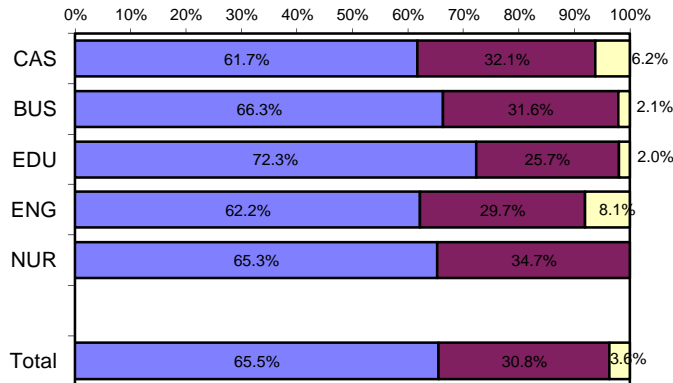
Developing Critical Thinking Ability



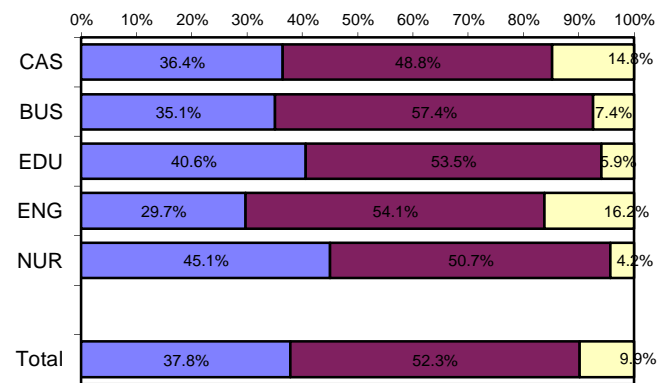
Developing Sense of Ethics



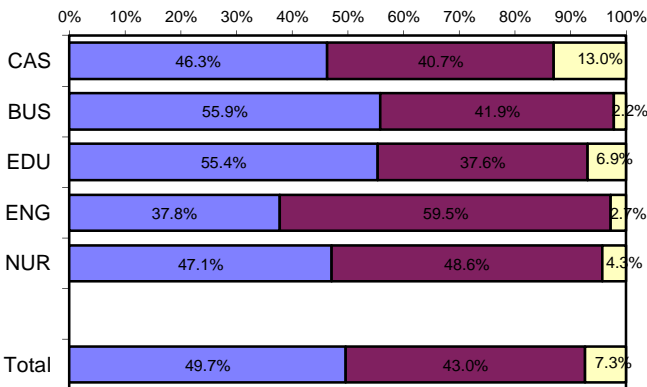
Understanding People with Different Backgrounds



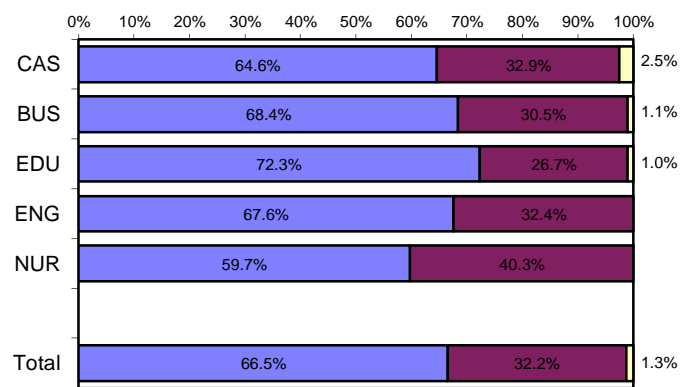
Becoming a More Active Citizen



Improving Quality of Life (aside from financial benefits)



Developing Reasoning Skills



Appendix A

Sample Questionnaire

SOUTHERN ILLINOIS UNIVERSITY EDWARDSVILLE

SURVEY OF 2011 BACCALAUREATE GRADUATES ONE YEAR AFTER GRADUATION

Most of the questions in this survey can be answered simply by circling the appropriate number. We hope you will give us your help and valuable input so that we can design programs that better serve the needs of SIUE students. PLEASE ANSWER THESE QUESTIONS ONLY IN REGARD TO THE SIUE UNDERGRADUATE DEGREE YOU RECEIVED LAST YEAR. Your individual responses to this questionnaire will be kept completely confidential. Thank you for your cooperation. Please return this survey in the envelope provided.

I. Employment

1. Are you currently employed (including self-employed)?

- | | |
|------------------|--|
| 1 Yes, full-time | 3 No, but <u>am</u> seeking employment |
| 2 Yes, part-time | 4 No, and <u>am not</u> seeking employment |

If you are NOT employed (responses 3 and 4), skip to *Section II*.

2. What is the Zip Code of your place of employment (e.g., your actual workplace, not corporate headquarters)? _____

3. How would you classify your primary employer?

- | | |
|--|--|
| 1 Self-employed or private practice | 6 Health agency (e.g., hospital, clinic) |
| 2 Business (industrial, commercial or service) | 7 Federal, state, or local government |
| 3 Professional firm (e.g., engineering, law) | 8 Armed services |
| 4 College or university | 9 Non-profit (non-government) |
| 5 Elementary/secondary school (including cooperatives) | 10 Other (please specify) _____ |

4. How satisfied are you with your current job?

- 1 Very Satisfied 2 Satisfied 3 Somewhat Satisfied 4 Somewhat Dissatisfied 5 Dissatisfied 6 Very Dissatisfied

5. How closely related is your current job to your bachelor's degree major?

- 1 Closely Related 2 Related 3 Unrelated

If you marked "3" (unrelated), is this by choice?

- 1 Yes 2 No

6. When did you secure your first job following receipt of your bachelor's degree?

- 1 Held the same job while enrolled
2 Secured job by time of graduation
3 Secured job after graduation

If you marked "3," how many months after graduation did you secure employment?

- | | | |
|--------------------------|--------------------------|----------------------|
| 1 Less than 1 month | 3 Between 3 and 6 months | 5 More than 9 months |
| 2 Between 1 and 3 months | 4 Between 6 and 9 months | |

7. What is your annual earned income before taxes in your current job? _____

8. In general, how well did your bachelor's degree prepare you for your present job?

- 1 Very Well 2 Well 3 Adequately 4 Inadequately 5 Poorly 6 Very poorly

9. Please circle on the lists below both your primary **occupation**¹ (what you do) and the **industry** in which you are employed (where you do it). Although some occupations typically work within one industry, they may be employed in other industries also. An example would be a school nurse — Health: Registered Nurses (11) in Educational Services (15). Examples of the types of occupations contained in each category are provided in italics.

Please write in your actual job title _____ (optional)

Circle One

Occupational Categories

- | | |
|--|---|
| <p>01. Management (such as top executives; marketing, P.R., finance, human resources, administrative services, purchasing, & sales managers; educational administrators; health administrators)</p> <p>02. Business Operations (such as buyers & purchasing agents; insurance claims adjusters/examiners; human resources, training, & labor relations specialists; management analysts)</p> <p>03. Financial Specialists (such as accountants, assessors, appraisers, financial & credit analysts/advisors, loan counselors/officers)</p> <p>04. Computer Specialists (such as computer & information scientists, programmers, software specialists, database & network administrators and analysts)</p> <p>05. Mathematical Scientists and Technicians (such as mathematicians, statisticians, actuaries & mathematical technicians)</p> <p>06. Architects, Surveyors, and Cartographers</p> <p>07. Engineers and Related Technicians (such as agricultural, civil, computer hardware, electrical, industrial, mechanical, materials & construction engineers & technicians)</p> <p>08. Life and Physical Scientists and Technicians (such as agricultural & food scientists, biologists, medical scientists, chemists, physicists, atmospheric & environmental scientists, and related technicians)</p> <p>09. Social Scientists (such as economists, psychologists, market & survey researchers, geographers, historians, sociologists, anthropologists, political scientists & urban planners)</p> <p>10. Health: Doctors (such as physicians & surgeons, dentists, veterinarians, optometrists, podiatrists, and chiropractors)</p> <p>11. Health: Registered Nurses</p> <p>12. Health: Therapists (such as occupational, physical, recreational, and speech therapists)</p> <p>13. Health: Other Health Practitioners, Professionals, and Support Workers (such as pharmacists, dieticians, physician assistants, and all other technicians/assistants/aides)</p> <p>14. Community and Social Service (such as counselors, social workers, community & religious workers, probation officers)</p> <p>15. Legal: Attorneys/Judges</p> <p>16. Legal: Legal Support Workers</p> <p>17. Education : Early Childhood Teachers (such as day care, pre-school, and kindergarten teachers)</p> <p>18. Education: Elementary School Teachers</p> <p>19. Education: Middle School Teachers</p> | <p>20. Education: Secondary School Teachers</p> <p>21. Education: Special Education Teachers</p> <p>22. Education: Other, except Administrators (see 01) (such as postsecondary teachers; vocational teachers; teaching & research assistants; other teachers, trainers, & assistants)</p> <p>23. Library Occupations (such as librarians, archivists, curators, and library technicians)</p> <p>24. Arts and Design Workers (such as designers and fine & craft artists)</p> <p>25. Entertainers, Performers, Sports and Related Workers (such as musicians, singers, dancers, actors, producers, directors, composers, athletes, coaches and referees)</p> <p>26. Media and Communication Workers (such as writers & editors, announcers, news analysts & reporters, public relations specialists, and media & communications equipment workers)</p> <p>27. Sales (such as real estate, retail, insurance & securities sales agents, wholesale & manufacturing sales representatives, telemarketers)</p> <p>28. Office and Administration (such as clerical & support personnel, clerks, tellers, distribution workers)</p> <p>29. Protective Services (such as firefighters, correctional officers, police, life guards, security guards, investigators)</p> <p>30. Food Preparation and Serving (such as cooks, bartenders, food service workers & servers)</p> <p>31. Building and Grounds Cleaning and Maintenance (such as janitors, cleaners, landscaping & grounds keeping laborers)</p> <p>32. Personal Care and Services (such as flight attendants, child care workers, hairstylists & personal care workers, recreation workers, hotel & travel industry workers)</p> <p>33. Farming, Fishing, and Forestry (such as farmworkers, animal care workers, foresters, loggers)</p> <p>34. Construction and Extractive (such as carpenters; electricians; painters, construction, oil & mining workers; plumbers)</p> <p>35. Installation, Maintenance, and Repair (such as telecommunications workers; auto repairers; heating, air conditioning, and refrigeration mechanics and installers)</p> <p>36. Production (such as electrical & electronic equipment assemblers; food, metal, plastic, printing, & photography industry technicians & workers)</p> <p>37. Transportation and Material Moving (such as pilots, drivers, air traffic controllers)</p> <p>38. Military (such as officers & enlisted personnel)</p> |
|--|---|

Circle One

Industrial Categories

- | | | |
|---|---|--|
| <p>01 Agriculture, Forestry, and Fishing</p> <p>02 Mining</p> <p>03 Utilities</p> <p>04 Construction</p> <p>05 Manufacturing</p> <p>06 Wholesale Trade</p> <p>07 Retail Trade</p> <p>08 Transportation</p> <p>09 Information</p> | <p>10 Finance and Insurance</p> <p>11 Real Estate and Rental and Leasing</p> <p>12 Professional, Scientific and Technical Services</p> <p>13 Management of Companies and Enterprises</p> <p>14 Administrative and Support, Waste Management & Remediation Services</p> <p>15 Educational Services</p> | <p>16 Health Care and Social Assistance</p> <p>17 Arts, Entertainment and Recreation</p> <p>18 Accommodations and Food Services</p> <p>19 Other Services (except Public Administration)</p> <p>20 Public Administration</p> |
|---|---|--|

¹For some occupations, such as doctors, the occupation is not appropriate for students one year after earning a baccalaureate degree. This complete listing is also used for surveys of alumni five-years and nine-years after graduation.

II. Education

10. Have you enrolled in a college or university since earning your bachelor's degree?

- 1 Yes, full-time 2 Yes, part-time 3 No

If you have NOT enrolled in a college or university (response "3"), skip to *Section III*.

11. Are you pursuing (or have you completed) an additional degree since earning your bachelor's?

- 1 Yes 2 No (If your answer is "no," skip to *Section III*.)

If you are pursuing (or have completed) another degree, please indicate which degree below:

- | | |
|--|--|
| 1 Associate's | 6 Health Professional (dentistry, pharmacy, podiatry, optometry, etc.) |
| 2 Second Bachelor's | 7 Theology/Divinity |
| 3 Academic Master's (MA, MS, MEd, etc.) | 8 Law (LLB, JD) |
| 4 Professional Master's (MBA, MSW, MFA, MPA, etc.) or Education Specialist | 9 Doctorate (PhD, EdD, DA, DBA, etc.) |
| 5 Medicine (MD, DO) | 10 Other, please specify: _____ |

12. In general, how well did your bachelor's degree prepare you for your additional degree program?

- 1 Very well 2 Well 3 Adequately 4 Inadequately 5 Poorly 6 Very poorly

III. Satisfaction

13. What is your present attitude towards the University?

- 1 Strongly Positive 2 Positive 3 Somewhat Positive 4 Somewhat Negative 5 Negative 6 Strongly Negative

14. What is your present attitude towards your bachelor's degree major?

- 1 Strongly Positive 2 Positive 3 Somewhat Positive 4 Somewhat Negative 5 Negative 6 Strongly Negative

IV. Educational Practices: *The questions below will provide feedback to help the University improve undergraduate education. Please respond to each question by evaluating your program as a whole.*

In my major degree program, --	Very Often	Often	Sometimes	Infrequently	Never
15. professors were accessible outside of class.	1	2	3	4	5
16. I was expected or required to work cooperatively with other students on projects, homework, and assignments.	1	2	3	4	5
17. professors encouraged me to challenge my own ideas, the ideas of other students, and those presented in readings and other course materials.	1	2	3	4	5
18. professors used appropriate teaching activities to help me learn.	1	2	3	4	5
19. professors' expectations for the quality of student work was high.	1	2	3	4	5
20. professors provided me with timely feedback on my performance.	1	2	3	4	5
21. professors encouraged students' questions and discussion in class.	1	2	3	4	5
22. I spent the necessary time and energy to come to class prepared.	1	2	3	4	5

V. Program Quality

23. How would you rate the quality of your major degree program concerning the:

	Excellent	Good	Fair	Poor
A. Number of courses offered in your major for you to complete your program in a reasonable amount of time.	1	2	3	4
B. Classes being offered at convenient times.	1	2	3	4
C. Classes being offered in a logical sequence.	1	2	3	4

24. How would you rate the quality of the faculty in your major degree program: 1 2 3 4

25. Were the academic standards in grading students by faculty in your degree program:

- 1 Too High 2 About Right 3 Too Low

VI. Educational Effectiveness

26. Listed below are some abilities often mentioned as important for personal and professional success in the 21st century. In your view, how effective were your University experiences in —

	Extremely Helpful	Very Helpful	Moderately Helpful	Slightly Helpful	Not Helpful
A. helping you to better develop your critical thinking ability?	1	2	3	4	5
B. helping you to better develop your sense of ethics?	1	2	3	4	5
C. contributing to a greater understanding of people with different backgrounds, habits, values, appearances, and abilities?	1	2	3	4	5
D. helping you to become a more active citizen?	1	2	3	4	5
E. improving the quality of your life aside from financial benefits?	1	2	3	4	5
F. helping you to better develop your reasoning skills?	1	2	3	4	5
G. helping you to better develop your capacity to view problems from different perspectives?	1	2	3	4	5
H. helping you to better develop your ability to solve problems?	1	2	3	4	5
I. helping you to better develop your ability to make informed decisions as a citizen?	1	2	3	4	5
J. helping you to better develop your writing skills?	1	2	3	4	5
K. helping you to better develop your oral communication skills?	1	2	3	4	5
L. helping you to better develop your knowledge of scientific and technological developments?	1	2	3	4	5

27. My SIUE undergraduate education broadened my interest in issues beyond the subjects in my major.

1 Strongly Agree 2 Agree 3 Neutral 4 Disagree 5 Strongly Disagree

28. How important has your college education been to your —

	Very Important	Moderately Important	Slightly Important	Not Important
A. Personal Life	1	2	3	4
B. Community Life	1	2	3	4
C. Professional Life	1	2	3	4

29. How would you rate the quality of education that you received from SIUE relative to the education that your friends and colleagues have received from other colleges or universities?

1 Among the Best 2 Above Average 3 Average 4 Below Average 5 Among the worst

30. Please indicate your involvement with each of the following since completing your bachelor's degree:

	Currently Involved	Have Been Involved	Never Involved
A. Organized, formal learning that is career-related (non-degree)	1	2	3
B. Personal enrichment studies	1	2	3
C. Professional activities or organizations	1	2	3
D. Volunteer work / community service activities or organizations	1	2	3
E. Social/recreational activities or organizations	1	2	3
F. Political activities or organizations	1	2	3
G. Religious/ethical activities or organizations	1	2	3
H. Support or participation in the Arts (<i>music, drama, dance, art</i>)	1	2	3
I. Reading books not directly related to your job	1	2	3

VII. Comments