

Southern Illinois University Edwardsville
Survey of 2009 Baccalaureate Graduates -- Five Years Out

Survey Results for Schools

April 2015

Survey Administered By
The Office of Undergraduate Assessment and Program Review

Survey Results Compiled By
The Office of Institutional Research and Studies

**Southern Illinois University at Edwardsville
Survey of 2009 Baccalaureate Graduates -- Five Years Out**

Contents

Introduction

Methodology

Survey Population and Respondents

Charts: *2009 Baccalaureate Recipients, Profile*

- § *Gender*
- § *Race/Ethnic*
- § *Age at Graduation*
- § *Matriculation Status*
- § *Time to Degree for New Freshmen*
- § *Time to Degree for New Transfers*

Table: *Comparison of All Graduates to Survey Respondents*

Survey Results

Charts: *2009 Baccalaureate Graduates Five Years Out, Satisfaction*

- § *Present Attitude Toward the University*
- § *Present Attitude Towards Alumni=s Bachelor=s Degree Major*
- § *Quality of SIUE Education Relative to That of Friends at Other Schools*

2009 Baccalaureate Graduates Five Years Out, Additional Education

- § *Additional Postsecondary Degree?*
- § *Currently Pursuing a Degree?*
- § *How Well Bachelor' s Degree Prepared Alumni for Additional Degree*

2009 Baccalaureate Graduates Five Years Out, Employment Status

- § *Employment Status*
- § *Place of Employment*
- § *Job in Field Related to Major?*
- § *Job Satisfaction*
- § *How Well Bachelor' s Degree Prepared Alum for Current Career Path*
- § *Mean Salary of Alumni Employed Full Time*

Tables: *Part I Employment Questions*
 Part II Education Questions
 Part III Satisfaction Questions
 Part IV Educational Effectiveness Questions

Questionnaire

Southern Illinois University Edwardsville Survey of 2009 Baccalaureate Graduates -- Five Year Out

Introduction

This five-year out baccalaureate survey was done to provide data for the University's undergraduate program reviews and other planning uses.

After the first six years, the surveys were reviewed and changed, modifying some questions and value scales, and adding some additional questions.

The current survey was administered during the spring and fall of 2014 to calendar year 2009 baccalaureate graduates of SIUE. The questionnaire includes 20 questions, separated in four themed sections - Employment, Education, Satisfaction Questions, and Educational Effectiveness Questions. The fifth section of the survey includes space for any comment the survey participant wishes to leave. See Appendix 1 for a survey form.

Methodology

The survey questionnaire and a cover letter were adapted from the questionnaire and letter developed for previous surveys. SIUE Alumni Services provided current addresses for calendar year 2009 graduates as determined from institutional records.

The survey was distributed in April 2014. Each envelope included a cover letter, a questionnaire, and a postage-paid, pre-addressed return envelope. Each questionnaire was stamped with a sequential, identifying number which was also stamped on a listing of the graduates (this aided in identifying the surveys when returned).

Surveys were mailed first class to the 1,884 baccalaureate graduates, for whom addresses were available on April 1, 2014. On April 29, a second wave mailing of the surveys was sent to the remaining 1,604 non-respondents.

Returned surveys began arriving as soon as April 8, and continued through the summer and fall, with a few arriving as late as January 2015. As the surveys came in, each was matched with the corresponding stamped listing. The students' names were then checked against the alphabetic list of alumni to verify (or, if the alumnus chose not to provide the identification number, to obtain) the student identification number. The student identification number was the key which allowed merging of survey data with administrative records (e.g., biographic, graduation, matriculation, and enrollment information).

Southern Illinois University Edwardsville
Survey of 2009 Baccalaureate Graduates -- Five Years Out

Survey Population and Respondents

	Number of Graduates
2009 Baccalaureate Degrees	2,151
Less persons who received 2 baccalaureate degrees	42
2009 Baccalaureate Graduates	2,109
Less Graduates with No Address Available *	226
Graduates Surveyed	1,883
Less Non-Deliverable Surveys	62
Less Non-Responding Graduates	1,388
Survey Respondents	433
Gross Response Rate (Respondents/Total Surveyed)	23.00%
Adjusted Response Rate (Respondents/Delivered Surveys)	23.78%

* Includes deceased alumni, foreign addresses and known bad addresses.

4/28/2015

Southern Illinois University at Edwardsville
Survey of 2009 Baccalaureate Graduates -- Five Years Out

Comparison of All Graduates to Survey Respondents

	All Baccalaureate Graduates		One Year Out Survey Respondents		Five Year Out Survey Respondents	
	Number	Percent	Number	Percent	Number	Percent
Total	2109	100.0%	646	100.0%	433	100.0%
Female	1148	45.6%	420	35.0%	262	60.5%
Male	961	54.4%	226	65.0%	171	39.5%
Missing Data	0	0.0%	0	0.0%	0	0.0%
White, Non-Hispanic	1823	86.4%	580	89.8%	393	90.8%
Black, Non-Hispanic	137	6.5%	23	3.6%	19	4.4%
Asian/Pacific Islander	45	2.1%	16	2.5%	6	1.4%
American Indian/Alaskan Native	4	0.2%	1	0.2%	0	0.0%
Hispanic	42	2.0%	12	1.9%	8	1.8%
Non-Resident Alien	16	0.8%	1	0.2%	0	0.0%
Missing Data	42	2.0%	13	2.0%	7	1.6%
Age at Graduation	range = 19 to 63 median = 23.0		range = 20 to 63 median = 23.0		range = 19 to 56 median = 23.0	
Bachelor of Science	1692	80.2%	528	81.7%	345	79.7%
Bachelor of Music	24	1.1%	2	0.3%	3	0.7%
Bachelor of Arts	271	12.8%	77	11.9%	58	13.4%
Bachelor of Fine Arts	24	1.1%	9	1.4%	5	1.2%
Bachelor of Sci in Accountancy	85	4.0%	26	4.0%	22	5.1%
Bachelor of Liberal Studies	13	0.6%	4	0.6%	0	0.0%
Bachelor of Social Work	0	0.0%	0	0.0%	0	0.0%
Missing Data	0	0.0%	0	0.0%	0	0.0%
Graduated Spring 2009	1239	58.7%	404	62.5%	254	58.7%
Graduated Summer 2009	285	13.5%	63	9.8%	52	12.0%
Graduated Fall 2009	585	27.7%	179	27.7%	127	29.3%
Missing Data	0	0.0%	0	0.0%	0	0.0%
Degree From College of Arts and Sciences	855	40.5%	208	32.2%	145	33.5%
Degree From School of Business	414	19.6%	133	20.6%	101	23.3%
Degree from School of Education	420	19.9%	157	24.3%	91	21.0%
Degree from School of Engineering	201	9.5%	63	9.8%	45	10.4%
Degree from School of Nursing	219	10.4%	85	13.2%	51	11.8%
Missing Data	0	0.0%	0	0.0%	0	0.0%
Matriculated as a New Freshman	1029	48.8%	325	50.3%	232	53.6%
Matriculated as a Transfer	1062	50.4%	315	48.8%	196	45.3%
Matriculated as a Non-Degree Student	18	0.9%	6	0.9%	5	1.2%
Missing Data	0	0.0%	0	0.0%	0	0.0%
Time to Degree for New Freshmen						
3 Years or Fewer	76	7.4%	32	9.8%	18	7.8%
4 Years	549	53.4%	187	57.5%	154	66.4%
5 Years	218	21.2%	67	20.6%	39	16.8%
6 Years	73	7.1%	20	6.2%	8	3.4%
7 Years	38	3.7%	6	1.8%	3	1.3%
8 Years	16	1.6%	3	0.9%	3	1.3%
9 Years	17	1.7%	6	1.8%	4	1.7%
10 Years	7	0.7%	2	0.6%	1	0.4%
11 Years or More	35	3.4%	2	0.6%	2	0.9%
Missing Data	0	0.0%	0	0.0%	0	0.0%
Time to Degree for Transfers						
2 or Fewer Years	353	33.2%	119	37.8%	77	39.3%
3 Years	363	34.2%	107	34.0%	60	30.6%
4 Years	170	16.0%	38	12.1%	25	12.8%
5 Years	70	6.6%	18	5.7%	18	9.2%
6 Years	31	2.9%	10	3.2%	6	3.1%
7 Years	17	1.6%	3	1.0%	0	0.0%
8 Years	11	1.0%	2	0.6%	1	0.5%
9 Years	8	0.8%	1	0.3%	0	0.0%
10 Years or More	39	3.7%	17	5.4%	9	4.6%
Missing Data	0	0.0%	0	0.0%	0	0.0%
Graduating GPA (4 point scale)	Mean = 3.208 Std Dev = 0.454 Maximum = 4.000 Minimum = 2.000 N = 0		Mean = 3.299 Std Dev = 0.457 Maximum = 4.000 Minimum = 2.000 N = 0		Mean = 3.325 Std Dev = 0.437 Maximum = 4.000 Minimum = 2.075 N = 433	

Southern Illinois University at Edwardsville
Survey of 2009 Baccalaureate Graduates -- Five Years Out

Comparison of All Graduates to Survey Respondents

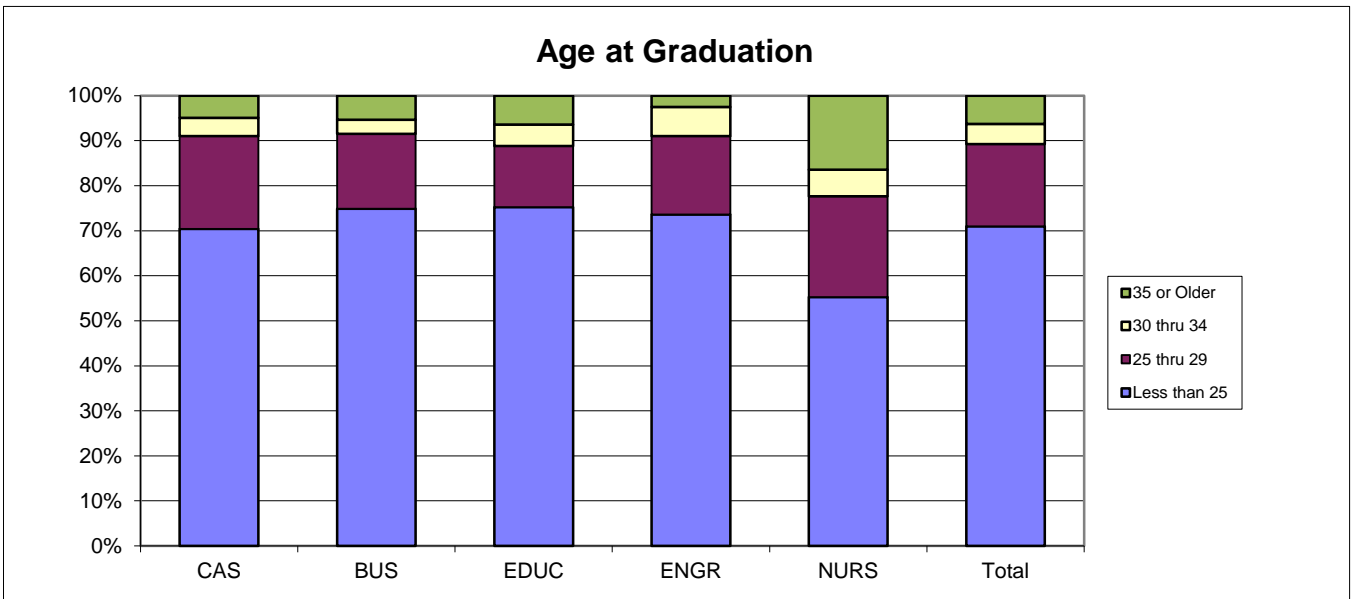
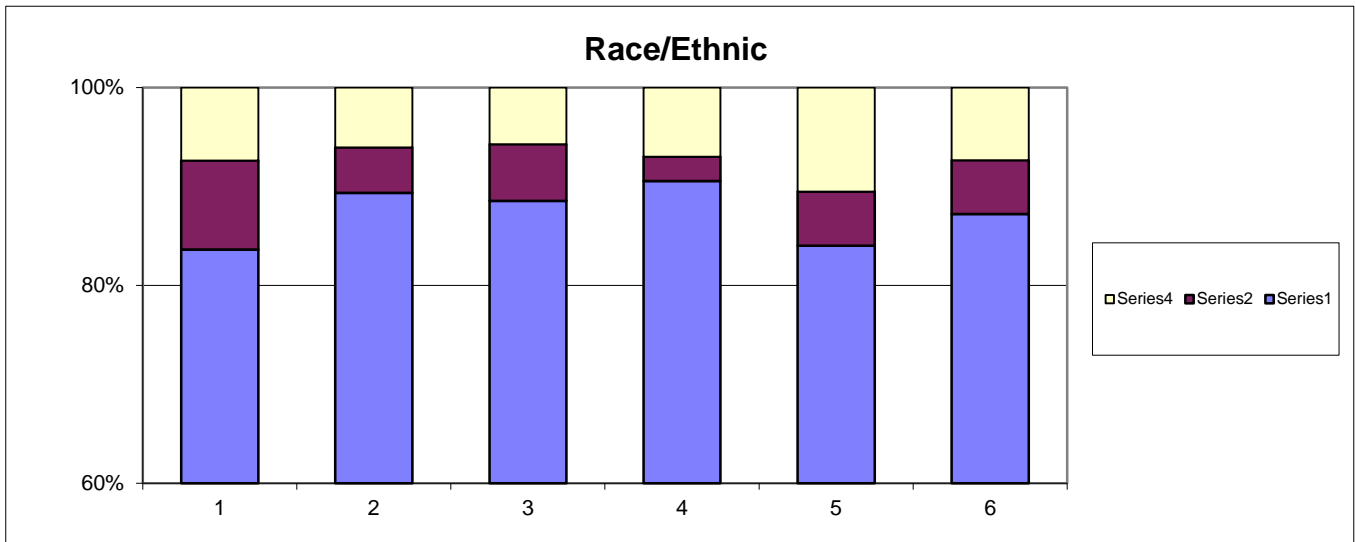
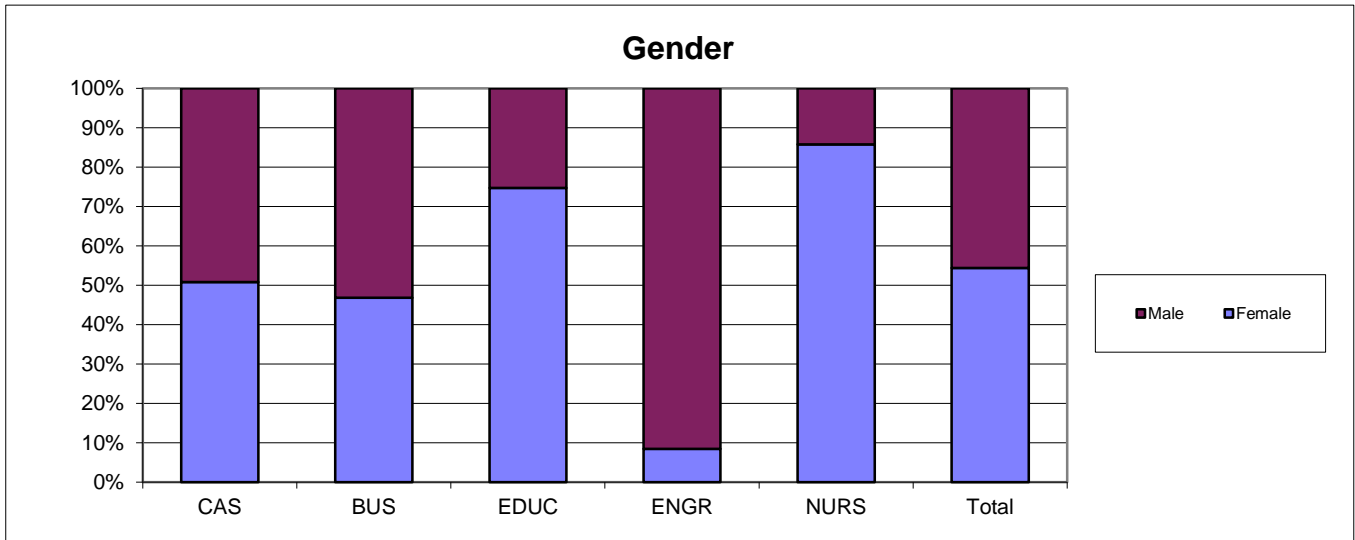
School Detail	All Graduates					
	CAS	BUS	EDUC	ENGR	NURS	Total
Total	855	414	420	201	219	2109
Female	50.9%	46.9%	74.8%	8.5%	85.8%	54.4%
Male	49.1%	53.1%	25.2%	91.5%	14.2%	45.6%
Missing Data	0.0%	0.0%	0.0%	0.0%	0.0%	0.0%
White, Non-Hispanic	83.6%	89.4%	88.6%	90.5%	84.0%	86.4%
Black, Non-Hispanic	9.0%	4.6%	5.7%	2.5%	5.5%	6.5%
Asian/Pacific Islander	2.5%	1.2%	1.4%	2.0%	4.1%	2.1%
American Indian/Alaskan Native	0.1%	0.5%	0.0%	0.5%	0.0%	0.2%
Hispanic	2.3%	1.7%	2.1%	1.0%	1.8%	2.0%
Non-Resident Alien	0.5%	1.4%	0.0%	1.5%	1.4%	0.8%
Missing Data	2.0%	1.2%	2.1%	2.0%	3.2%	2.0%
Age at Graduation	19 to 59	20 to 54	20 to 63	20 to 53	21 to 58	19 to 63
range						
median	23.0	23.0	23.0	23.0	24.0	23.0
Bachelor of Science	65.3%	79.5%	92.1%	99.0%	100.0%	80.2%
Bachelor of Music	2.8%	0.0%	0.0%	0.0%	0.0%	1.1%
Bachelor of Arts	27.6%	0.0%	7.9%	1.0%	0.0%	12.8%
Bachelor of Fine Arts	2.8%	0.0%	0.0%	0.0%	0.0%	1.1%
Bachelor of Sci in Accountancy	0.0%	20.5%	0.0%	0.0%	0.0%	4.0%
Bachelor of Liberal Studies	1.5%	0.0%	0.0%	0.0%	0.0%	0.6%
Bachelor of Social Work	0.0%	0.0%	0.0%	0.0%	0.0%	0.0%
Missing Data	0.0%	0.0%	0.0%	0.0%	0.0%	0.0%
Graduated Spring 2009	53.1%	49.8%	71.7%	54.2%	77.2%	58.7%
Graduated Summer 2009	18.7%	15.0%	8.8%	11.9%	0.9%	13.5%
Graduated Fall 2009	28.2%	35.3%	19.5%	33.8%	21.9%	27.7%
Missing Data	0.0%	0.0%	0.0%	0.0%	0.0%	0.0%
Matriculated as a New Freshman	48.5%	53.6%	48.3%	51.2%	39.3%	48.8%
Matriculated as a Transfer	50.8%	46.1%	51.2%	46.8%	58.4%	50.4%
Matriculated as a Non-Degree Student	0.7%	0.2%	0.5%	2.0%	2.3%	0.9%
Missing Data	0.0%	0.0%	0.0%	0.0%	0.0%	0.0%
Time to Degree for New Freshmen						
3 Years or Fewer	6.3%	14.0%	6.9%	3.9%	1.2%	7.4%
4 Years	48.7%	51.4%	63.1%	53.4%	58.1%	53.4%
5 Years	25.3%	15.8%	18.2%	26.2%	16.3%	21.2%
6 Years	7.0%	7.7%	4.9%	5.8%	12.8%	7.1%
7 Years	5.3%	3.2%	0.5%	4.9%	3.5%	3.7%
8 Years	1.7%	0.9%	1.0%	1.0%	4.7%	1.6%
9 Years	2.2%	1.8%	1.0%	1.0%	1.2%	1.7%
10 Years	0.2%	1.0%	0.9%	2.1%	0.0%	0.7%
11 Years or More	3.4%	4.5%	3.4%	1.9%	2.3%	3.4%
Missing Data	0.0%	0.0%	0.0%	0.0%	0.0%	0.0%
Time to Degree for Transfers						
2 or Fewer Years	28.1%	37.7%	37.2%	23.4%	44.5%	33.2%
3 Years	32.9%	33.5%	38.6%	38.3%	28.9%	34.2%
4 Years	19.1%	12.0%	11.6%	23.4%	13.3%	16.0%
5 Years	10.4%	5.8%	1.9%	4.3%	4.7%	6.6%
6 Years	3.0%	3.1%	3.3%	3.2%	1.6%	2.9%
7 Years	1.4%	1.6%	1.9%	4.3%	0.0%	1.6%
8 Years	0.7%	1.6%	1.4%	1.1%	0.8%	1.0%
9 Years	1.4%	0.0%	0.5%	0.0%	0.8%	0.8%
10 Years or More	3.0%	4.7%	3.7%	2.1%	5.5%	3.7%
Missing Data	0.0%	0.0%	0.0%	0.0%	0.0%	0.0%
Graduating GPA (4 point scale) mean	3.128	3.118	3.416	3.042	3.445	3.208
Std Dev	0.467	0.410	0.410	0.436	0.340	0.454

Southern Illinois University at Edwardsville
Survey of 2009 Baccalaureate Graduates -- Five Years Out

Comparison of All Graduates to Survey Respondents

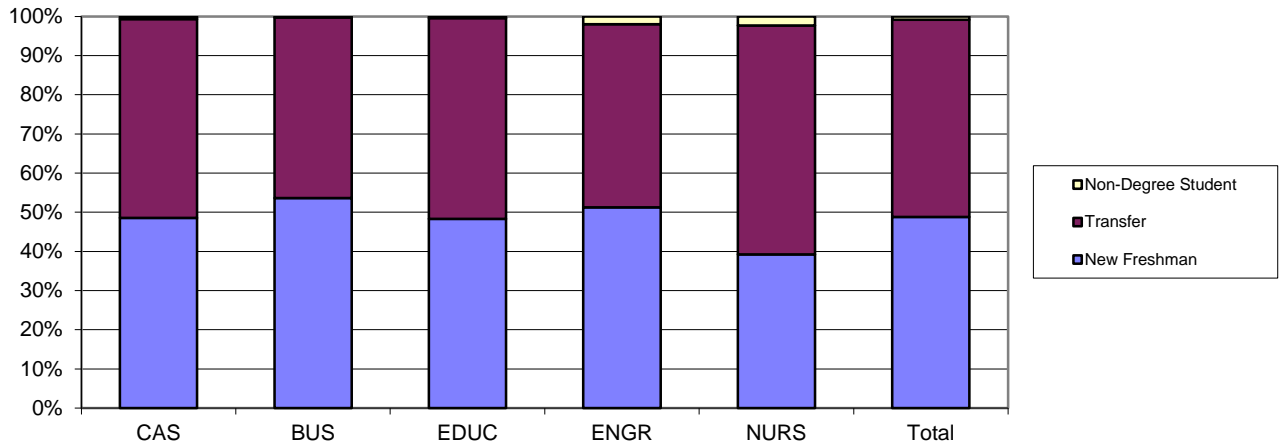
School Detail	Survey Respondents					
	CAS	BUS	EDUC	ENGR	NURS	Total
Total	145	101	91	45	51	433
Female	63.4%	54.5%	79.1%	2.2%	82.4%	60.5%
Male	36.6%	45.5%	20.9%	97.8%	17.6%	39.5%
Missing Data	0.0%	0.0%	0.0%	0.0%	0.0%	0.0%
White, Non-Hispanic	89.7%	96.0%	89.0%	95.6%	82.4%	90.8%
Black, Non-Hispanic	4.8%	2.0%	7.7%	0.0%	5.9%	4.4%
Asian/Pacific Islander	1.4%	1.0%	0.0%	2.2%	3.9%	1.4%
American Indian/Alaskan Native	0.0%	0.0%	0.0%	0.0%	0.0%	0.0%
Hispanic	2.8%	1.0%	2.2%	2.2%	0.0%	1.8%
Non-Resident Alien	0.0%	0.0%	0.0%	0.0%	0.0%	0.0%
Missing Data	1.4%	0.0%	1.1%	0.0%	7.8%	1.6%
Age at Graduation	range	range	range	range	range	range
	19 to 50	20 to 51	20 to 56	21 to 50	21 to 52	19 to 56
	median	median	median	median	median	median
	23.0	22.0	22.0	23.0	24.0	23.0
Bachelor of Science	61.4%	78.2%	89.0%	100.0%	100.0%	79.7%
Bachelor of Music	2.1%	0.0%	0.0%	0.0%	0.0%	0.7%
Bachelor of Arts	33.1%	0.0%	11.0%	0.0%	0.0%	13.4%
Bachelor of Fine Arts	3.4%	0.0%	0.0%	0.0%	0.0%	1.2%
Bachelor of Sci in Accountancy	0.0%	21.8%	0.0%	0.0%	0.0%	5.1%
Bachelor of Liberal Studies	0.0%	0.0%	0.0%	0.0%	0.0%	0.0%
Bachelor of Social Work	0.0%	0.0%	0.0%	0.0%	0.0%	0.0%
Missing Data	0.0%	0.0%	0.0%	0.0%	0.0%	0.0%
Graduated Spring 2009	53.1%	51.5%	72.5%	48.9%	72.5%	58.7%
Graduated Summer 2009	20.0%	10.9%	6.6%	13.3%	0.0%	12.0%
Graduated Fall 2009	26.9%	37.6%	20.9%	37.8%	27.5%	29.3%
Missing Data	0.0%	0.0%	0.0%	0.0%	0.0%	0.0%
Matriculated as a New Freshman	53.1%	60.4%	58.2%	51.1%	35.3%	53.6%
Matriculated as a Transfer	46.2%	38.6%	41.8%	44.4%	62.7%	45.3%
Matriculated as a Non-Degree Student	0.7%	1.0%	0.0%	4.4%	2.0%	1.2%
Missing Data	0.0%	0.0%	0.0%	0.0%	0.0%	0.0%
Time to Degree for New Freshmen						
3 Years or Fewer	2.8%	16.4%	7.5%	0.0%	0.0%	7.8%
4 Years	37.2%	67.2%	64.2%	60.9%	61.1%	66.4%
5 Years	9.7%	11.5%	18.9%	26.1%	11.1%	16.8%
6 Years	0.7%	1.6%	3.8%	8.7%	11.1%	3.4%
7 Years	0.7%	1.6%	0.0%	4.3%	0.0%	1.3%
8 Years	0.7%	0.0%	0.0%	0.0%	11.1%	1.3%
9 Years	1.4%	1.6%	0.0%	0.0%	5.6%	1.7%
10 Years	0.0%	0.0%	2.6%	0.0%	0.0%	0.5%
11 Years or More	0.0%	0.0%	3.8%	0.0%	0.0%	0.9%
Missing Data	0.0%	0.0%	0.0%	0.0%	0.0%	0.0%
Time to Degree for Transfers						
2 or Fewer Years	34.3%	35.9%	52.6%	40.0%	37.5%	39.3%
3 Years	23.9%	33.3%	34.2%	40.0%	31.3%	30.6%
4 Years	19.4%	10.3%	7.9%	10.0%	9.4%	12.8%
5 Years	16.4%	7.7%	2.6%	5.0%	6.3%	9.2%
6 Years	1.5%	5.1%	2.6%	0.0%	6.3%	3.1%
7 Years	0.0%	0.0%	0.0%	0.0%	0.0%	0.0%
8 Years	0.0%	2.6%	0.0%	0.0%	0.0%	0.5%
9 Years	0.0%	0.0%	0.0%	0.0%	0.0%	0.0%
10 Years or More	4.5%	5.1%	0.0%	5.0%	9.4%	4.6%
Missing Data	0.0%	0.0%	0.0%	0.0%	0.0%	0.0%
Graduating GPA (4 point scale)	mean	mean	mean	mean	mean	mean
	3.301	3.276	3.475	3.050	3.462	3.325
	Std Dev	Std Dev	Std Dev	Std Dev	Std Dev	Std Dev
	0.461	0.434	0.376	0.390	0.371	0.437

2009 Baccalaureate Recipients Profile

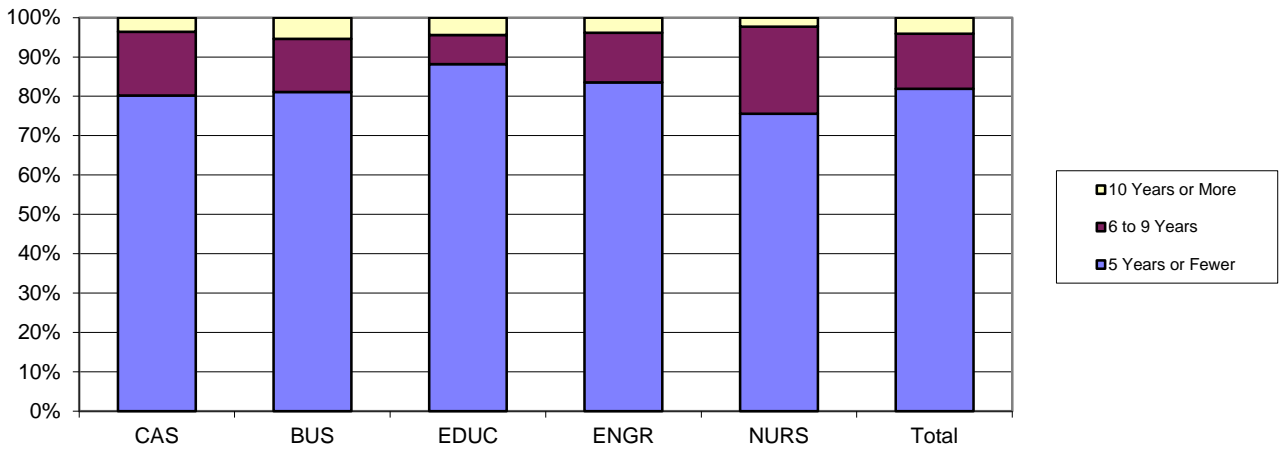


2009 Baccalaureate Recipients *Profile*, cont.

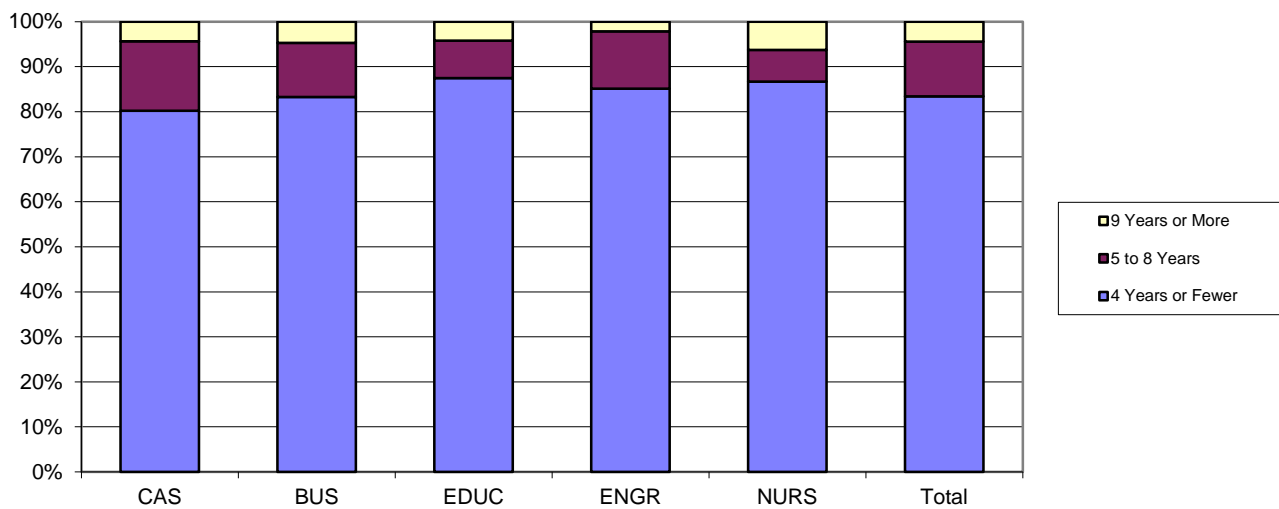
Matriculation Status



Time to Degree for New Freshmen



Time to Degree for New Transfers



Southern Illinois University Edwardsville
Survey of 2009 Baccalaureate Graduates -- Five Years Out
Survey Responses -- Part I
Employment Questions

School Detail	CAS	BUS	EDU	ENG	NUR	Total
Number of Survey Respondents	145	101	91	45	51	433
1. Number Employed:						
Full-time	77.2%	95.0%	80.2%	97.8%	86.3%	85.2%
Part-time	14.5%	2.0%	13.2%	0.0%	11.8%	9.5%
Not, but Seeking	4.1%	2.0%	3.3%	2.2%	0.0%	2.8%
Not, not Seeking	4.1%	1.0%	3.3%	0.0%	2.0%	2.5%
Number Responding	145	101	91	45	51	433
The remaining questions in Part I were to be answered only by respondents who were employed full-time or part-time.						
	133	98	85	44	50	410
2. Place of Employment						
Illinois	50.4%	44.8%	69.9%	65.9%	55.1%	55.4%
Missouri	36.4%	41.7%	21.7%	15.9%	32.7%	31.9%
Other	13.2%	13.5%	8.4%	18.2%	12.2%	12.7%
Number Responding	129	96	83	44	49	401
3. Classification of Primary Employer						
Self-Employed or Private Practice	6.8%	2.1%	0.0%	0.0%	2.0%	2.9%
Business (Industrial, Commercial or Service)	24.2%	62.9%	14.1%	56.8%	0.0%	31.9%
Professional Firm (e.g., Engineering, Law)	4.5%	12.4%	0.0%	31.8%	0.0%	7.8%
College or University	9.1%	3.1%	3.5%	0.0%	4.0%	4.9%
Elementary/Secondary School	17.4%	0.0%	47.1%	0.0%	2.0%	15.7%
Health Agency (e.g. Hospital, Clinic)	9.1%	2.1%	16.5%	0.0%	84.0%	17.2%
Federal, State, or Local Government	12.9%	10.3%	7.1%	4.5%	4.0%	9.1%
Armed Services	3.0%	2.1%	1.2%	4.5%	2.0%	2.5%
NonProfit (Non-Government)	7.6%	3.1%	10.6%	0.0%	0.0%	5.4%
Other	5.3%	2.1%	0.0%	2.3%	2.0%	2.7%
Number Responding	132	97	85	44	50	408
4. Job Satisfaction						
Very Satisfied	37.4%	38.1%	37.6%	39.5%	22.0%	36.0%
Satisfied	32.8%	43.3%	37.6%	39.5%	50.0%	39.2%
Somewhat Satisfied	19.8%	17.5%	11.8%	18.6%	22.0%	17.7%
Somewhat Dissatisfied	3.1%	1.0%	9.4%	2.3%	4.0%	3.9%
Dissatisfied	4.6%	0.0%	3.5%	0.0%	2.0%	2.5%
Very Dissatisfied	2.3%	0.0%	0.0%	0.0%	0.0%	0.7%
Number Responding	131	97	85	43	50	406
5. Job in Field?						
Closely Related	36.8%	46.9%	63.5%	56.8%	86.0%	52.9%
Related	20.3%	46.9%	15.3%	38.6%	12.0%	26.6%
Unrelated (by choice)	23.3%	3.1%	9.4%	2.3%	0.0%	10.5%
Unrelated (not by choice)	18.0%	3.1%	11.8%	2.3%	2.0%	9.5%
Unrelated (choice unknown)	1.5%	0.0%	0.0%	0.0%	0.0%	0.5%
Number Responding	133	98	85	44	50	410
6. Number of Employers After Graduation						
One	31.6%	41.8%	29.4%	43.2%	44.0%	36.3%
Two	39.1%	30.6%	41.2%	36.4%	32.0%	36.3%
Three to Six	29.3%	26.5%	28.2%	20.5%	24.0%	26.8%
More than Six	0.0%	1.0%	1.2%	0.0%	0.0%	0.5%
Number Responding	133	98	85	44	50	410

Southern Illinois University Edwardsville
Survey of 2009 Baccalaureate Graduates -- Five Years Out
Survey Responses -- Part I
Employment Questions

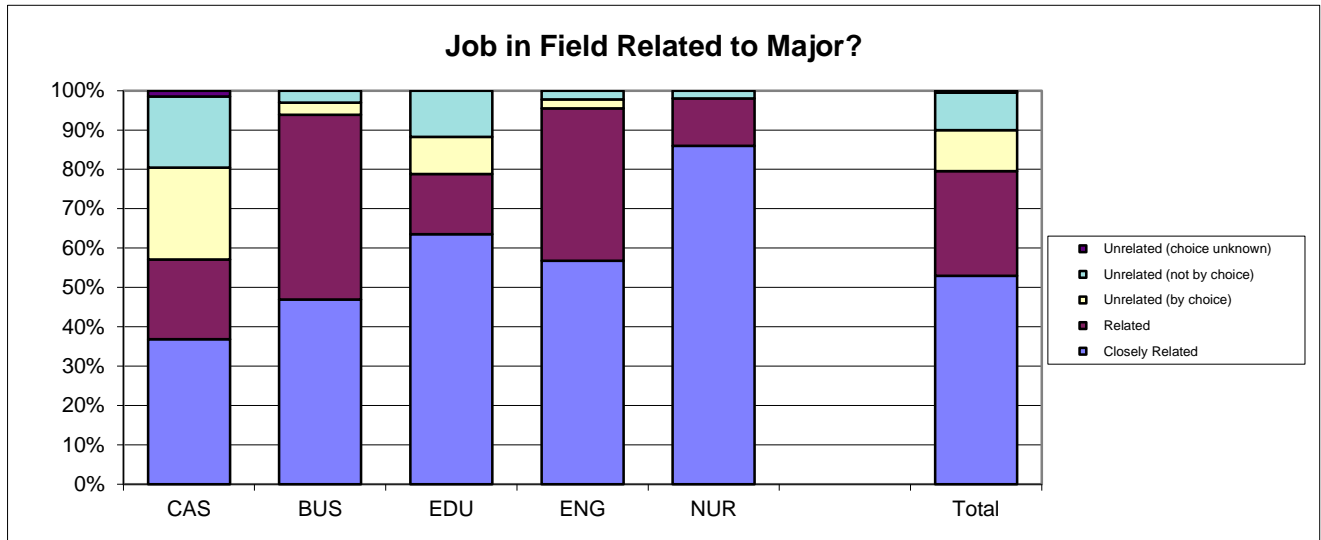
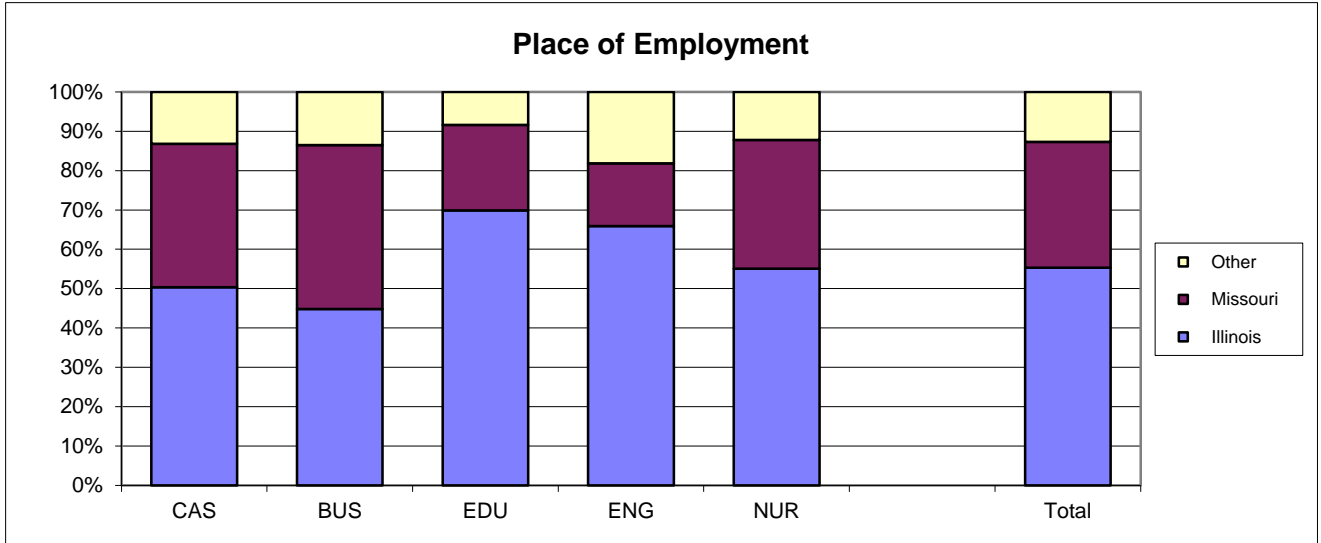
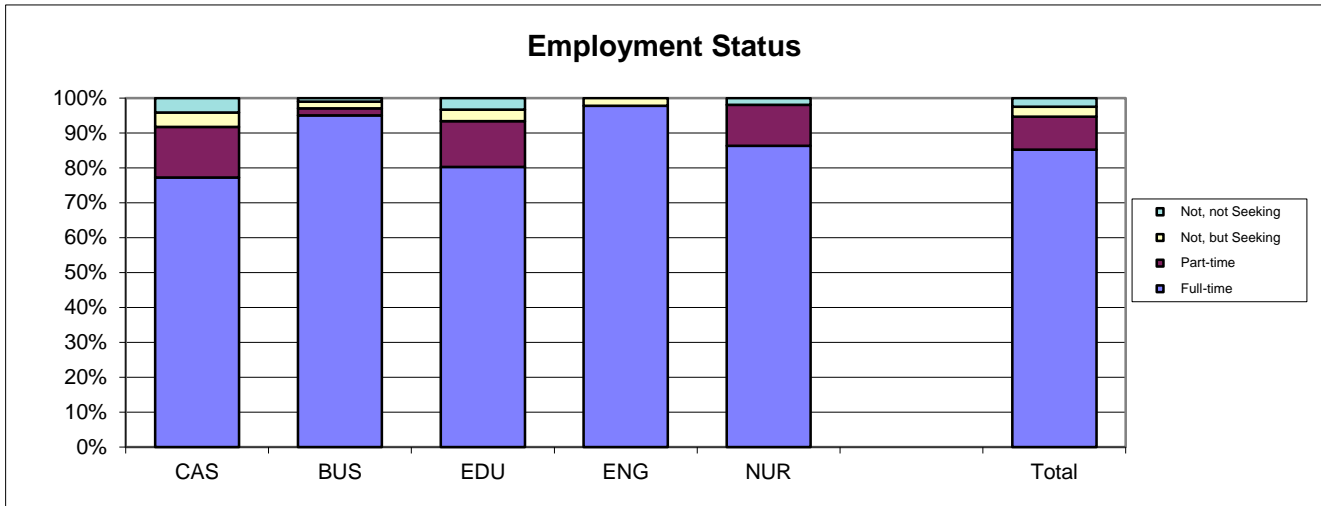
School Detail, cont.	CAS	BUS	EDU	ENG	NUR	Total
7. Annual Earned Income in Current Job Before Taxes						
Employed Full-Time						
Less Than \$25,000	6.8%	--	5.8%	--	--	3.2%
\$25,000 to \$29,999	9.7%	4.4%	10.1%	2.4%	--	6.4%
\$30,000 to \$34,999	10.7%	8.9%	13.0%	--	5.1%	8.7%
\$35,000 to \$39,999	14.6%	11.1%	29.0%	4.8%	--	13.7%
\$40,000 to \$44,999	14.6%	8.9%	17.4%	2.4%	7.7%	11.4%
\$45,000 to 49,999	5.8%	7.8%	5.8%	--	17.9%	7.0%
\$50,000 or More	37.9%	58.9%	18.8%	90.5%	69.2%	49.6%
Number Responding	103	90	69	42	39	343
Mean Salary	\$47,051	\$54,710	\$39,396	\$68,126	\$56,567	\$51,192
Employed Part-Time						
Less Than 20,000	66.7%	--	30.0%	--	--	42.9%
20,000 to \$24,999	22.2%	--	10.0%	--	16.7%	17.1%
\$25,000 to \$29,999	5.6%	100.0%	--	--	16.7%	8.6%
\$30,000 to \$34,999	5.6%	--	40.0%	--	--	14.3%
\$35,000 or More	--	--	20.0%	--	66.7%	17.1%
Number Responding	18	1	10	0	6	35
Mean Salary	\$15,439	\$25,000	\$29,145	-	\$39,833	\$23,810
8. Bachelor's Degree Preparation for Career Path						
Very Well	17.6%	10.2%	24.7%	15.9%	40.0%	19.9%
Well	35.1%	37.8%	35.3%	40.9%	36.0%	36.5%
Adequately	25.2%	40.8%	28.2%	38.6%	20.0%	30.4%
Inadequately	11.5%	8.2%	8.2%	0.0%	2.0%	7.6%
Poorly	3.8%	1.0%	2.4%	2.3%	0.0%	2.2%
Very Poorly	6.9%	2.0%	1.2%	2.3%	2.0%	3.4%
Number Responding	131	98	85	44	50	408
9a. Primary Occupation						
Management	2.3%	14.4%	2.4%	11.4%	2.0%	6.2%
Business Operations	9.4%	18.6%	3.5%	2.3%	0.0%	8.4%
Financial Specialists	2.3%	33.0%	0.0%	0.0%	0.0%	8.7%
Computer Specialists	1.6%	13.4%	0.0%	11.4%	0.0%	5.0%
Mathematical Scientists and Technicians	0.0%	0.0%	0.0%	0.0%	0.0%	0.0%
Architects, Surveyors, and Cartographers	1.6%	0.0%	1.2%	2.3%	0.0%	1.0%
Engineers and Related Technicians	0.0%	0.0%	0.0%	68.2%	0.0%	7.4%
Life and Physical Scientists	3.1%	0.0%	0.0%	0.0%	0.0%	1.0%
Social Scientists	1.6%	1.0%	1.2%	0.0%	0.0%	1.0%
Health: Doctors	5.5%	0.0%	0.0%	0.0%	0.0%	1.7%
Health: Registered Nurses	3.1%	0.0%	1.2%	0.0%	85.7%	11.7%
Health: Therapists	0.8%	0.0%	14.1%	0.0%	0.0%	3.2%
Health: Other Health Practs, Profs & supp	3.1%	0.0%	5.9%	0.0%	8.2%	3.2%
Community and Social Service	6.3%	0.0%	9.4%	0.0%	0.0%	4.0%
Legal: Attorneys/Judges	1.6%	0.0%	0.0%	0.0%	0.0%	0.5%
Legal: Legal Support Workers	0.8%	0.0%	1.2%	0.0%	0.0%	0.5%
Education: Early Childhood Teachers	0.0%	0.0%	4.7%	0.0%	0.0%	1.0%
Education: Elementary School Teachers	2.3%	0.0%	7.1%	0.0%	0.0%	2.2%
Education: Middle School Teachers	1.6%	0.0%	9.4%	0.0%	0.0%	2.5%

continued on nex page

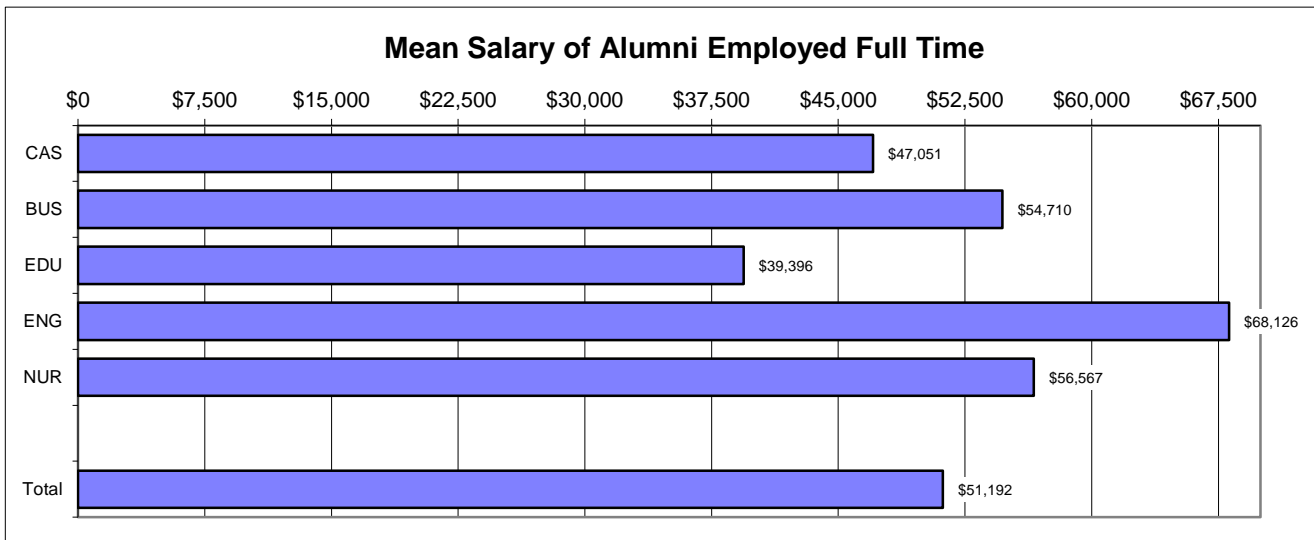
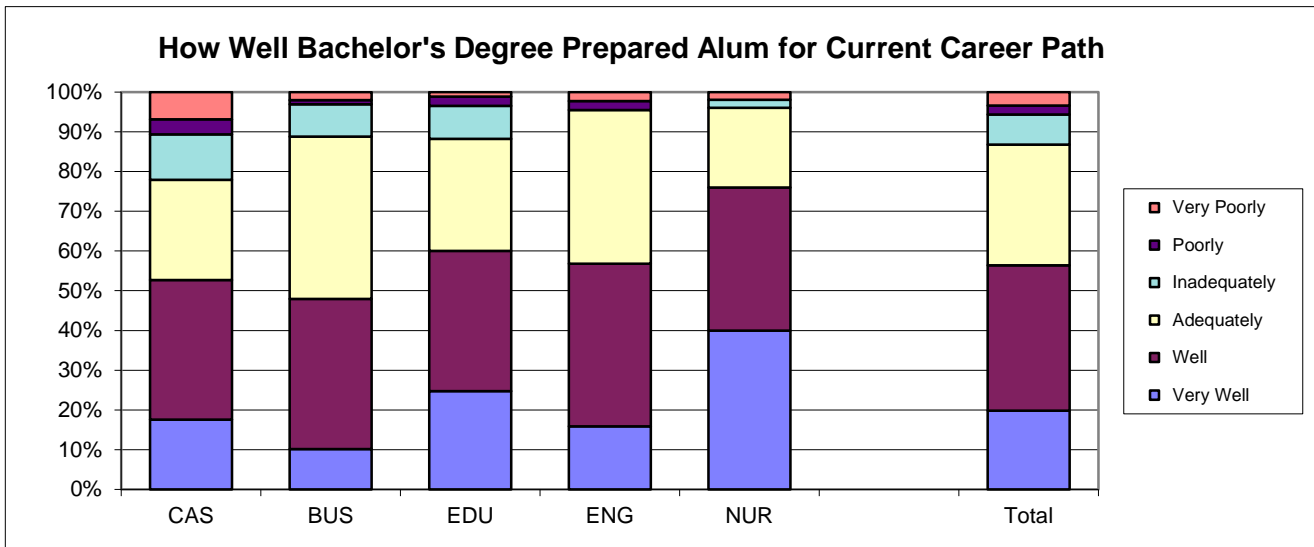
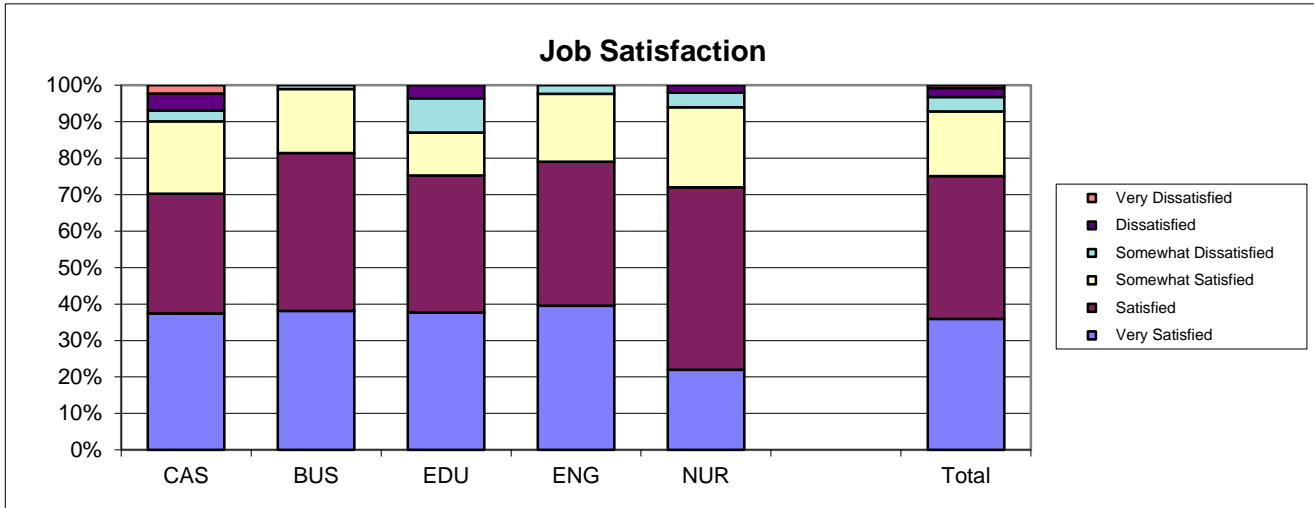
Southern Illinois University Edwardsville
Survey of 2009 Baccalaureate Graduates -- Five Years Out
Survey Responses -- Part I
Employment Questions

School Detail, cont.	CAS	BUS	EDU	ENG	NUR	Total
Education: Secondary Teachers	9.4%	0.0%	3.5%	0.0%	0.0%	3.7%
Education: Special Education Teachers	0.0%	0.0%	10.6%	0.0%	0.0%	2.2%
Education: Other, except Administrators	10.2%	0.0%	10.6%	0.0%	2.0%	5.7%
Library Occupations	3.1%	0.0%	0.0%	0.0%	0.0%	1.0%
Arts and Design Workers	1.6%	0.0%	0.0%	0.0%	0.0%	0.5%
Media and Communication Workers	0.0%	0.0%	1.2%	0.0%	0.0%	0.2%
Entertainment, Performers, Sports & Related	3.9%	2.1%	1.2%	0.0%	0.0%	2.0%
Sales	3.1%	9.3%	2.4%	0.0%	0.0%	3.7%
Office and Administration	7.0%	4.1%	5.9%	0.0%	0.0%	4.5%
Protective Services	3.1%	0.0%	1.2%	0.0%	2.0%	1.5%
Food Preparation and Serving	3.1%	0.0%	0.0%	0.0%	0.0%	1.0%
Buildings and Grounds Maintenance	0.8%	0.0%	0.0%	2.3%	0.0%	0.5%
Personal Care and Services	1.6%	0.0%	0.0%	0.0%	0.0%	0.5%
Farming, Fishing, and Forestry	0.0%	1.0%	0.0%	0.0%	0.0%	0.2%
Construction and Extractive	1.6%	0.0%	0.0%	0.0%	0.0%	0.5%
Installation, Maintenance, and Repair	0.0%	0.0%	0.0%	0.0%	0.0%	0.0%
Production	0.8%	0.0%	1.2%	0.0%	0.0%	0.5%
Transportation and Material Moving	0.0%	0.0%	0.0%	0.0%	0.0%	0.0%
Military	3.9%	3.1%	1.2%	2.3%	0.0%	2.5%
Number Responding	128	97	85	44	49	403
9b. Industry						
Agriculture, Forestry, and Fishing	0.9%	3.4%	0.0%	2.3%	0.0%	1.4%
Mining	1.9%	0.0%	0.0%	0.0%	0.0%	0.6%
Utilities	1.9%	0.0%	0.0%	15.9%	0.0%	2.5%
Construction	4.7%	0.0%	0.0%	18.2%	0.0%	3.7%
Manufacturing	3.8%	10.2%	4.0%	34.1%	0.0%	8.7%
Wholesale Trade	0.9%	4.5%	0.0%	0.0%	0.0%	1.4%
Retail Trade	0.9%	4.5%	0.0%	0.0%	0.0%	1.4%
Transportation	0.9%	5.7%	1.3%	0.0%	0.0%	2.0%
Information	2.8%	3.4%	1.3%	0.0%	0.0%	2.0%
Finance & Insurance	9.4%	33.0%	4.0%	0.0%	0.0%	11.8%
Real Estate & Rental & Leasing	1.9%	0.0%	2.7%	0.0%	0.0%	1.1%
Professional, Scientific & Technical Services	8.5%	11.4%	2.7%	20.5%	0.0%	8.5%
Management of Companies & Enterprises	0.0%	2.3%	0.0%	0.0%	0.0%	0.6%
Admin & Suppt, Waste Mgmt & Remedtn Svcs	0.0%	0.0%	1.3%	0.0%	0.0%	0.3%
Educational Services	21.7%	2.3%	46.7%	0.0%	4.8%	17.5%
Health Care & Social Assistance	19.8%	5.7%	32.0%	2.3%	92.9%	25.4%
Arts, Entertainment & Recreation	4.7%	2.3%	0.0%	0.0%	0.0%	2.0%
Accommodations & Food Services	1.9%	1.1%	0.0%	0.0%	0.0%	0.8%
Other Services (except Public Admin)	7.5%	8.0%	1.3%	4.5%	0.0%	5.1%
Public Administration	5.7%	2.3%	2.7%	2.3%	2.4%	3.4%
Number Responding	106	88	75	44	42	355

2009 Baccalaureate Graduates Five Years Out *Employment*



2009 Baccalaureate Graduates Five Years Out Employment, cont.

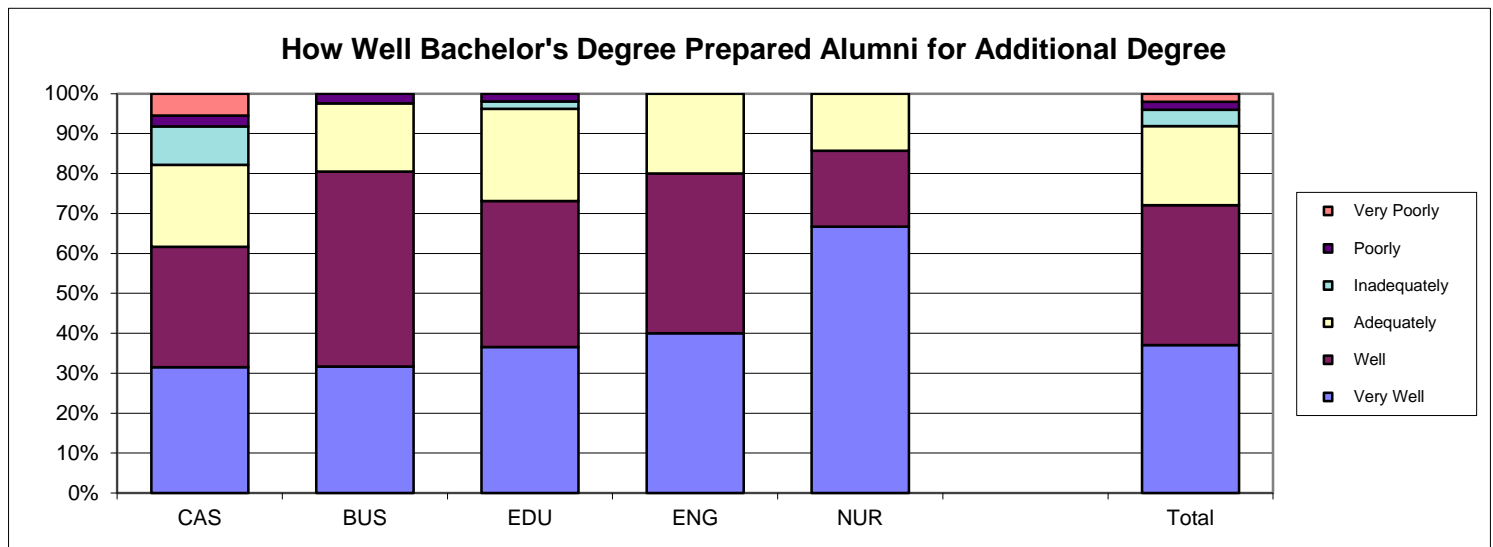
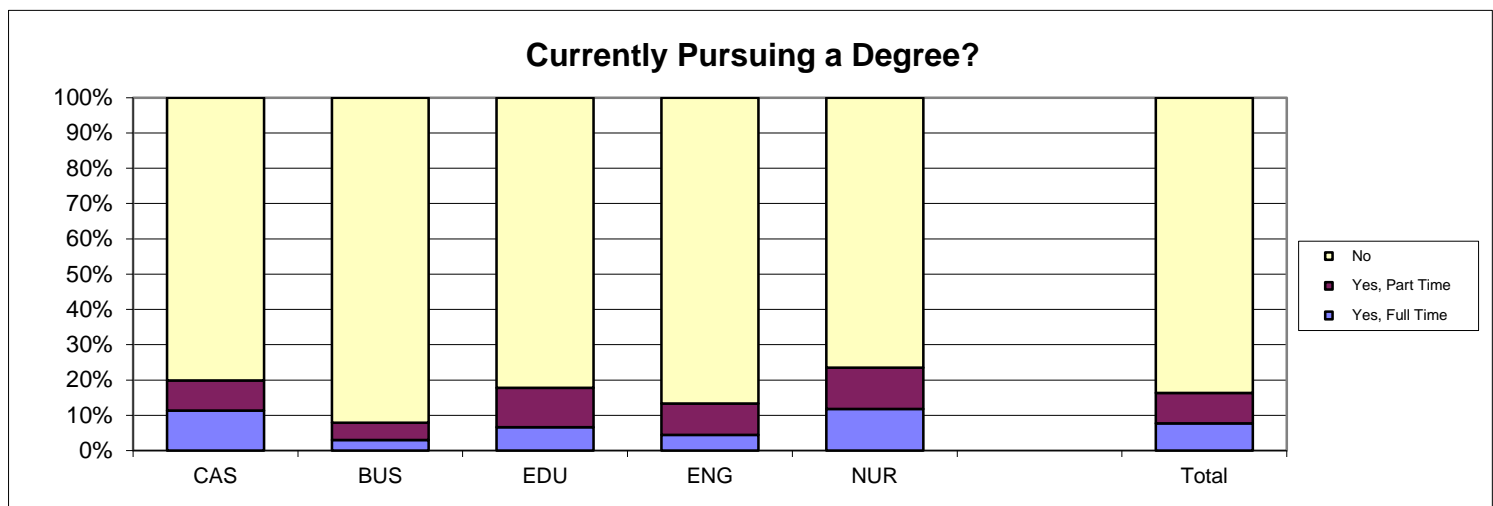
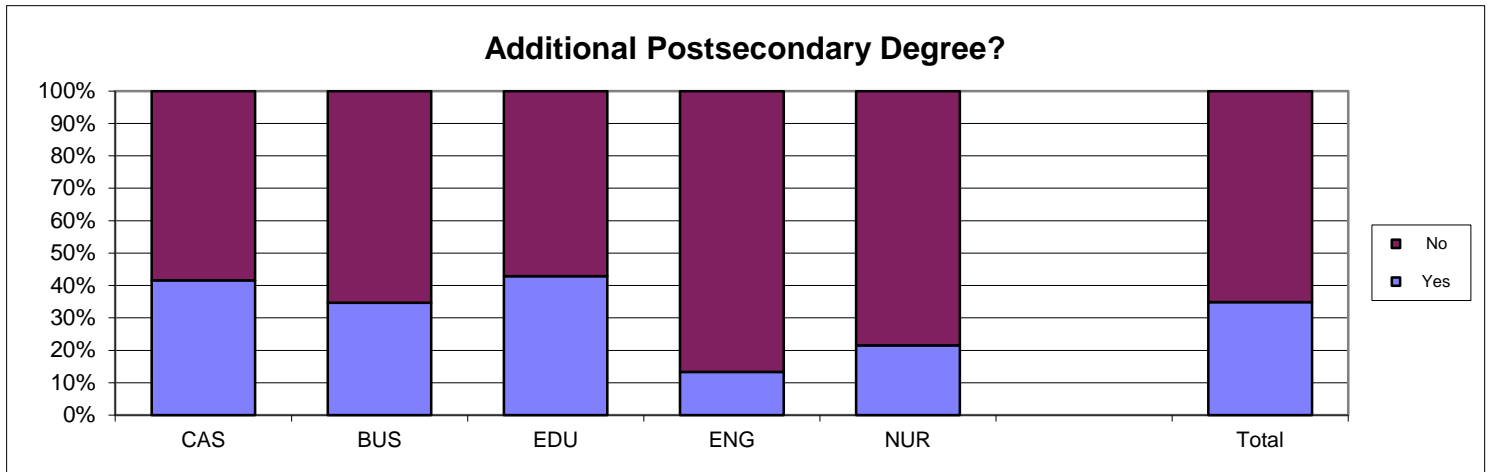


Southern Illinois University Edwardsville
Survey of 2009 Baccalaureate Graduates -- Five Years Out
Survey Responses -- Part II
Education Questions

School Detail	CAS	BUS	EDU	ENG	NUR	Total
Number of Survey Respondents	145	101	91	45	51	433
10. Additional Postsecondary Degree?						
Yes **	41.5%	34.7%	42.9%	13.3%	21.6%	34.9%
No	58.5%	65.3%	57.1%	86.7%	78.4%	65.1%
Number Responding	142	101	91	45	51	430
If Yes, What Degree?						
Associate's	6.8%	2.9%	5.1%	0.0%	0.0%	4.7%
Second Bachelor's	10.2%	5.7%	2.6%	0.0%	0.0%	6.0%
Academic Master's (MA, MS, MEd, etc)	44.1%	25.7%	69.2%	100.0%	45.5%	48.7%
Prof. Master's or Ed Specialist	16.9%	65.7%	17.9%	0.0%	27.3%	28.7%
Medicine (MD, OD)	1.7%	0.0%	0.0%	0.0%	0.0%	0.7%
Health Prof. (dentistry, pharmacy, etc.)	6.8%	0.0%	0.0%	0.0%	9.1%	3.3%
Theology/Divinity	0.0%	0.0%	0.0%	0.0%	0.0%	0.0%
Law (LLB, JD)	5.1%	0.0%	0.0%	0.0%	0.0%	2.0%
Doctorate (PhD, EdD, DA, DBA, etc.)	3.4%	0.0%	0.0%	0.0%	0.0%	1.3%
Other	5.1%	0.0%	5.1%	0.0%	18.2%	4.7%
Number Responding	59	35	39	6	11	150
11. Currently Pursuing a Degree?						
Yes, Full Time **	11.3%	3.0%	6.7%	4.4%	11.8%	7.7%
Yes, Part Time **	8.5%	5.0%	11.1%	8.9%	11.8%	8.6%
No	80.1%	92.1%	82.2%	86.7%	76.5%	83.6%
Number Responding	141	101	90	45	51	428
If Yes, What Degree?						
Associate's	3.6%	0.0%	0.0%	0.0%	0.0%	1.4%
Second Bachelor's	7.1%	0.0%	13.3%	0.0%	0.0%	5.8%
Academic Master's (MA, MS, MEd, etc)	39.3%	0.0%	60.0%	33.3%	33.3%	37.7%
Prof. Master's or Ed Specialist	28.6%	100.0%	20.0%	33.3%	8.3%	31.9%
Medicine (MD, OD)	3.6%	0.0%	0.0%	0.0%	0.0%	1.4%
Health Prof. (dentistry, pharmacy, etc.)	3.6%	0.0%	0.0%	0.0%	25.0%	5.8%
Theology/Divinity	0.0%	0.0%	0.0%	0.0%	0.0%	0.0%
Law (LLB, JD)	0.0%	0.0%	0.0%	16.7%	0.0%	1.4%
Doctorate (PhD, EdD, DA, DBA, etc.)	10.7%	0.0%	6.7%	16.7%	25.0%	11.6%
Other	3.6%	0.0%	0.0%	0.0%	8.3%	2.9%
Number Responding	28	8	15	6	12	69
12. Bachelor's Degree Preparation for Additional Degree						
Very Well	31.5%	31.7%	36.5%	40.0%	66.7%	37.1%
Well	30.1%	48.8%	36.5%	40.0%	19.0%	35.0%
Adequately	20.5%	17.1%	23.1%	20.0%	14.3%	19.8%
Inadequately	9.6%	0.0%	1.9%	0.0%	0.0%	4.1%
Poorly	2.7%	2.4%	1.9%	0.0%	0.0%	2.0%
Very Poorly	5.5%	0.0%	0.0%	0.0%	0.0%	2.0%
Number Responding	73	41	52	10	21	197

** The responses marked with asterisks each lead to a related question which was to be answered only by those who selected the asterisked responses.

2009 Baccalaureat Graduates Five Years Out Additional Education

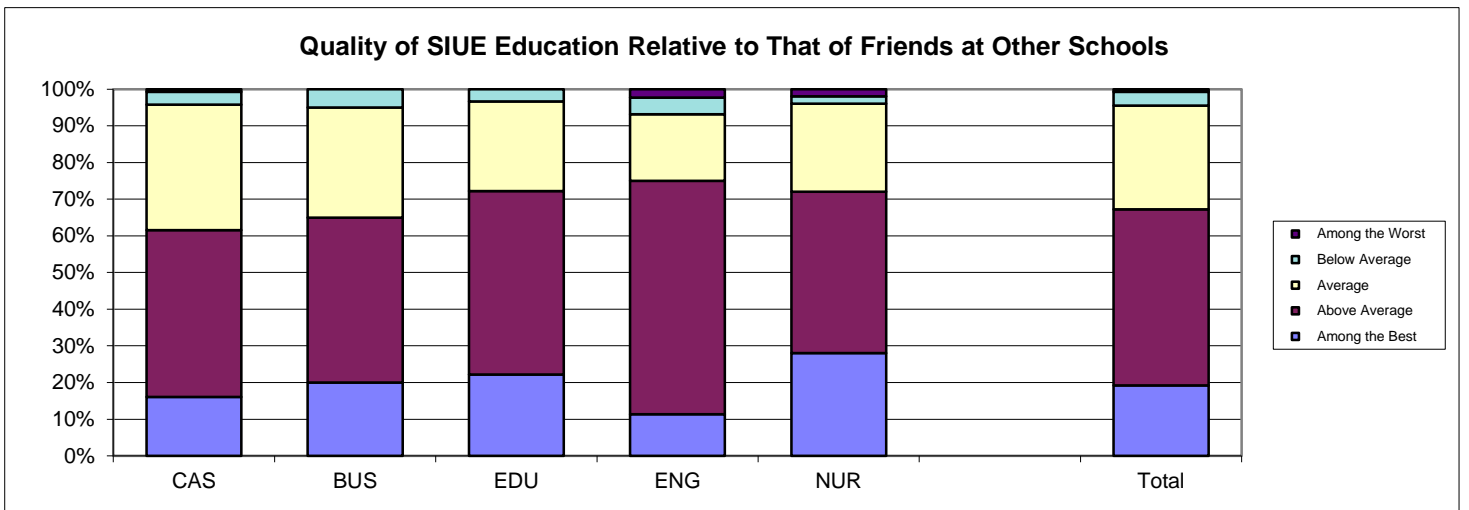
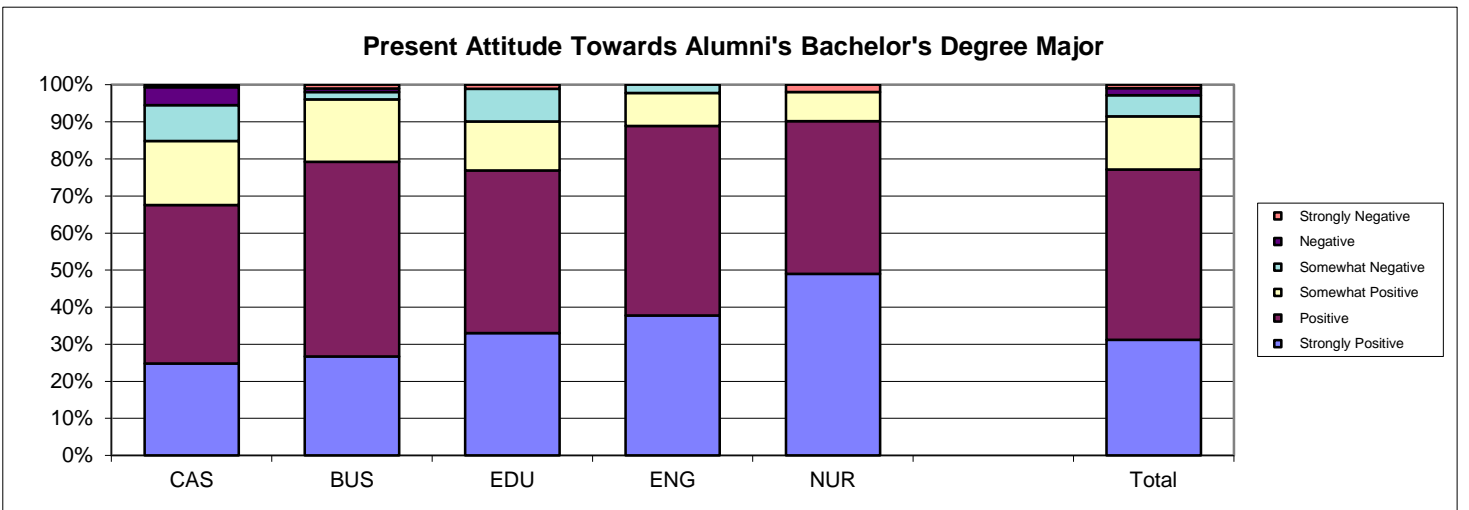
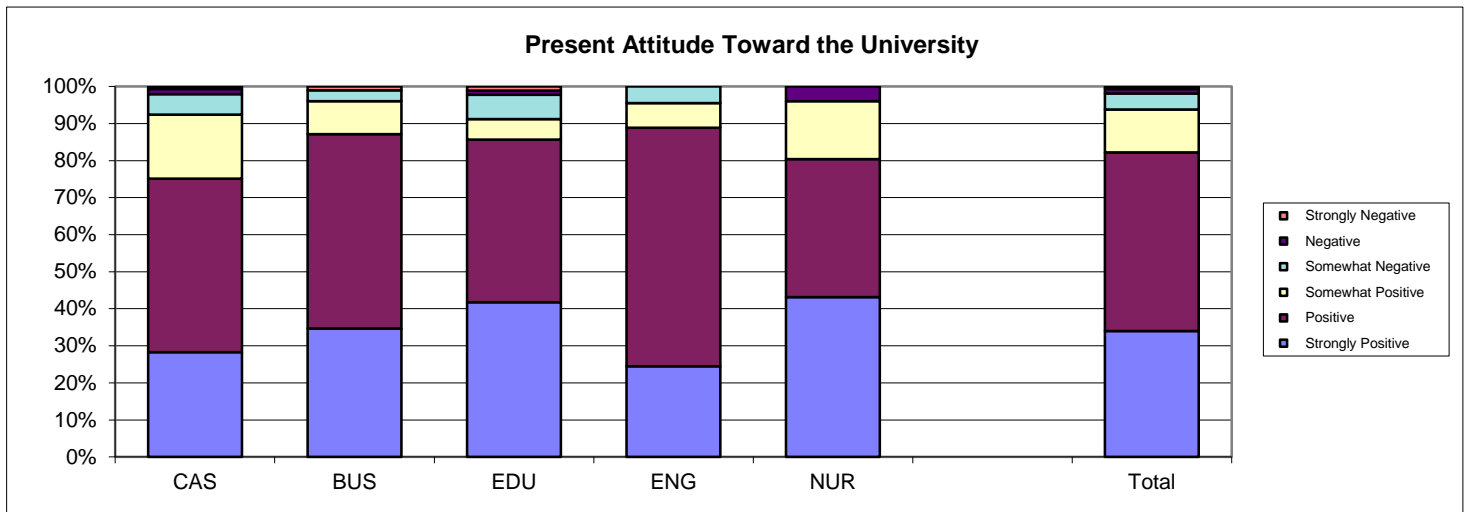


Southern Illinois University Edwardsville
Survey of 2009 Baccalaureate Graduates -- Five Years Out
Survey Responses -- Part III
Satisfaction Questions

School Detail	CAS	BUS	EDU	ENG	NUR	Total
Number of Survey Respondents	145	101	91	45	51	433
13. Present Attitude Towards the University						
Strongly Positive	28.3%	34.7%	41.8%	24.4%	43.1%	33.9%
Positive	46.9%	52.5%	44.0%	64.4%	37.3%	48.3%
Somewhat Positive	17.2%	8.9%	5.5%	6.7%	15.7%	11.5%
Somewhat Negative	5.5%	3.0%	6.6%	4.4%	0.0%	4.4%
Negative	1.4%	0.0%	1.1%	0.0%	3.9%	1.2%
Strongly Negative	0.7%	1.0%	1.1%	0.0%	0.0%	0.7%
Number Responding	145	101	91	45	51	433
14. Present Attitude Towards your Bachelor's Degree Major						
Strongly Positive	24.8%	26.7%	33.0%	37.8%	49.0%	31.2%
Positive	42.8%	52.5%	44.0%	51.1%	41.2%	46.0%
Somewhat Positive	17.2%	16.8%	13.2%	8.9%	7.8%	14.3%
Somewhat Negative	9.7%	2.0%	8.8%	2.2%	0.0%	5.8%
Negative	4.8%	1.0%	0.0%	0.0%	0.0%	1.8%
Strongly Negative	0.7%	1.0%	1.1%	0.0%	2.0%	0.9%
Number Responding	145	101	91	45	51	433

4/24/2015

2009 Baccalaureate Graduates Five Years Out Satisfaction



Southern Illinois University Edwardsville
Survey of 2009 Baccalaureate Graduates -- Five Years Out
Survey Responses -- Part IV
Educational Effectiveness Questions

School Detail	CAS	BUS	EDU	ENG	NUR	Total
Number of Survey Respondents	145	101	91	45	51	433
15. Helpfulness of University Experiences in:						
A. Developing Critical Thinking Ability						
Extremely Helpful	25.0%	12.2%	17.6%	22.2%	31.4%	21.0%
Very Helpful	48.6%	55.1%	49.5%	53.3%	37.3%	49.4%
Moderately Helpful	19.4%	30.6%	29.7%	20.0%	17.6%	24.0%
Slightly Helpful	5.6%	1.0%	2.2%	2.2%	13.7%	4.4%
Not Helpful	1.4%	1.0%	1.1%	2.2%	0.0%	1.2%
Number Responding	144	98	91	45	51	429
B. Developing Sense of Ethics						
Extremely Helpful	25.0%	8.2%	23.1%	2.2%	25.5%	18.5%
Very Helpful	39.6%	42.3%	36.3%	46.7%	31.4%	39.3%
Moderately Helpful	23.6%	40.2%	26.4%	37.8%	23.5%	29.4%
Slightly Helpful	8.3%	6.2%	9.9%	8.9%	13.7%	8.9%
Not Helpful	3.5%	3.1%	4.4%	4.4%	5.9%	4.0%
Number Responding	144	97	91	45	51	428
C. Understanding People with Different Backgrounds, Habits, Values, Appearances and Abilities						
Extremely Helpful	31.9%	20.4%	30.8%	6.7%	29.4%	26.1%
Very Helpful	39.6%	36.7%	44.0%	37.8%	39.2%	39.6%
Moderately Helpful	17.4%	31.6%	17.6%	42.2%	21.6%	23.8%
Slightly Helpful	9.0%	9.2%	6.6%	6.7%	7.8%	8.2%
Not Helpful	2.1%	2.0%	1.1%	6.7%	2.0%	2.3%
Number Responding	144	98	91	45	51	429
D. Becoming a More Active Citizen						
Extremely Helpful	13.2%	8.2%	16.5%	6.7%	17.6%	12.6%
Very Helpful	35.4%	18.4%	27.5%	33.3%	17.6%	27.5%
Moderately Helpful	34.7%	41.8%	40.7%	35.6%	49.0%	39.4%
Slightly Helpful	12.5%	23.5%	7.7%	11.1%	11.8%	13.8%
Not Helpful	4.2%	8.2%	7.7%	13.3%	3.9%	6.8%
Number Responding	144	98	91	45	51	429
E. Improving Quality of Life (aside from financial benefits)						
Extremely Helpful	19.4%	14.3%	18.7%	13.3%	17.6%	17.2%
Very Helpful	38.2%	41.8%	37.4%	40.0%	27.5%	37.8%
Moderately Helpful	29.9%	30.6%	28.6%	31.1%	33.3%	30.3%
Slightly Helpful	9.7%	10.2%	12.1%	11.1%	9.8%	10.5%
Not Helpful	2.8%	3.1%	3.3%	4.4%	11.8%	4.2%
Number Responding	144	98	91	45	51	429
F. Developing Reasoning Skills						
Extremely Helpful	24.3%	13.4%	20.9%	20.0%	25.5%	20.8%
Very Helpful	48.6%	53.6%	45.1%	53.3%	29.4%	47.2%
Moderately Helpful	20.8%	28.9%	27.5%	24.4%	35.3%	26.2%
Slightly Helpful	3.5%	2.1%	4.4%	0.0%	7.8%	3.5%
Not Helpful	2.8%	2.1%	2.2%	2.2%	2.0%	2.3%
Number Responding	144	97	91	45	51	428

Southern Illinois University Edwardsville
Survey of 2009 Baccalaureate Graduates -- Five Years Out
Survey Responses -- Part IV
Educational Effectiveness Questions

School Detail, con't.	CAS	BUS	EDU	ENG	NUR	Total
G. Viewing Problems from Different Perspectives						
Extremely Helpful	30.6%	10.2%	22.2%	17.8%	27.5%	22.4%
Very Helpful	48.6%	53.1%	48.9%	53.3%	27.5%	47.7%
Moderately Helpful	13.9%	32.7%	22.2%	22.2%	37.3%	23.6%
Slightly Helpful	6.3%	2.0%	5.6%	2.2%	7.8%	4.9%
Not Helpful	0.7%	2.0%	1.1%	4.4%	0.0%	1.4%
Number Responding	144	98	90	45	51	428
H. Developing Ability to Solve Problems						
Extremely Helpful	25.7%	17.3%	18.7%	22.2%	29.4%	22.4%
Very Helpful	47.9%	59.2%	50.5%	66.7%	27.5%	50.6%
Moderately Helpful	20.8%	19.4%	25.3%	11.1%	31.4%	21.7%
Slightly Helpful	4.2%	3.1%	4.4%	0.0%	11.8%	4.4%
Not Helpful	1.4%	1.0%	1.1%	0.0%	0.0%	0.9%
Number Responding	144	98	91	45	51	429
I. Making Informed Decisions as a Citizen						
Extremely Helpful	21.7%	7.1%	13.2%	4.4%	15.7%	14.0%
Very Helpful	39.9%	52.0%	48.4%	48.9%	41.2%	45.6%
Moderately Helpful	29.4%	29.6%	27.5%	22.2%	27.5%	28.0%
Slightly Helpful	5.6%	9.2%	7.7%	11.1%	13.7%	8.4%
Not Helpful	3.5%	2.0%	3.3%	13.3%	2.0%	4.0%
Number Responding	143	98	91	45	51	428
J. Developing Writing Skills						
Extremely Helpful	30.6%	13.3%	20.0%	13.3%	25.5%	22.0%
Very Helpful	36.1%	50.0%	35.6%	35.6%	29.4%	38.3%
Moderately Helpful	20.1%	23.5%	34.4%	28.9%	33.3%	26.4%
Slightly Helpful	8.3%	11.2%	5.6%	15.6%	11.8%	9.6%
Not Helpful	4.9%	2.0%	4.4%	6.7%	0.0%	3.7%
Number Responding	144	98	90	45	51	428
K. Developing Oral Communication Skills						
Extremely Helpful	27.1%	14.1%	22.0%	2.2%	22.0%	19.8%
Very Helpful	43.8%	45.5%	50.5%	48.9%	34.0%	45.0%
Moderately Helpful	20.8%	30.3%	20.9%	28.9%	32.0%	25.2%
Slightly Helpful	5.6%	9.1%	6.6%	20.0%	8.0%	8.4%
Not Helpful	2.8%	1.0%	0.0%	0.0%	4.0%	1.6%
Number Responding	144	99	91	45	50	429
L. Developing Knowledge of Scientific and Technological Developments						
Extremely Helpful	20.1%	12.1%	12.1%	20.0%	26.0%	17.2%
Very Helpful	33.3%	41.4%	47.3%	57.8%	34.0%	40.8%
Moderately Helpful	25.0%	25.3%	22.0%	17.8%	38.0%	25.2%
Slightly Helpful	13.2%	15.2%	13.2%	4.4%	2.0%	11.4%
Not Helpful	8.3%	6.1%	5.5%	0.0%	0.0%	5.4%
Number Responding	144	99	91	45	50	429
16. Undergraduate Education Broadened Interest Beyond Subjects in Major						
Strongly Agree	24.1%	12.0%	18.7%	6.7%	9.8%	16.7%
Agree	51.0%	50.0%	45.1%	46.7%	51.0%	49.1%
Neutral	19.3%	27.0%	27.5%	37.8%	31.4%	26.2%
Disagree	4.1%	10.0%	6.6%	6.7%	3.9%	6.3%
Strongly Disagree	1.4%	1.0%	2.2%	2.2%	3.9%	1.9%
Number Responding	145	100	91	45	51	432

Southern Illinois University Edwardsville
Survey of 2009 Baccalaureate Graduates -- Five Years Out
Survey Responses -- Part IV
Educational Effectiveness Questions

School Detail, con't.	CAS	BUS	EDU	ENG	NUR	Total
17. Importance of College Education to:						
A. Personal Life						
Very Important	59.3%	53.0%	53.8%	51.1%	60.8%	56.0%
Moderately Important	25.5%	30.0%	38.5%	35.6%	23.5%	30.1%
Slightly Important	9.7%	11.0%	5.5%	6.7%	11.8%	9.0%
Not Important	5.5%	6.0%	2.2%	6.7%	3.9%	4.9%
Number Responding	145	100	91	45	51	432
B. Community Life						
Very Important	31.7%	23.0%	40.7%	13.3%	35.3%	30.1%
Moderately Important	34.5%	35.0%	39.6%	42.2%	37.3%	36.8%
Slightly Important	20.0%	28.0%	13.2%	26.7%	23.5%	21.5%
Not Important	13.8%	14.0%	6.6%	17.8%	3.9%	11.6%
Number Responding	145	100	91	45	51	432
C. Professional Life						
Very Important	57.6%	71.0%	71.1%	68.9%	82.4%	67.7%
Moderately Important	25.7%	20.0%	20.0%	24.4%	13.7%	21.6%
Slightly Important	9.0%	6.0%	5.6%	2.2%	2.0%	6.0%
Not Important	7.6%	3.0%	3.3%	4.4%	2.0%	4.7%
Number Responding	144	100	90	45	51	430
18. Quality of SIUE Education Relative to That of Friends at Other Schools						
Among the Best	16.1%	20.0%	22.2%	11.4%	28.0%	19.2%
Above Average	45.5%	45.0%	50.0%	63.6%	44.0%	48.0%
Average	34.3%	30.0%	24.4%	18.2%	24.0%	28.3%
Below Average	3.5%	5.0%	3.3%	4.5%	2.0%	3.7%
Among the Worst	0.7%	0.0%	0.0%	2.3%	2.0%	0.7%
Number Responding	143	100	90	44	50	427
19. Involvement Since Bachelor's Degree with:						
A. Organized, Formal, Career Related Learning (non-degree)						
Currently Involved	33.1%	32.3%	47.8%	26.7%	47.1%	37.0%
Have Been Involved	44.8%	46.5%	38.9%	46.7%	39.2%	43.5%
Never Involved	22.1%	21.2%	13.3%	26.7%	13.7%	19.5%
Number Responding	145	99	90	45	51	430
B. Personal Enrichment Studies						
Currently Involved	30.3%	17.0%	23.9%	17.8%	31.4%	24.7%
Have Been Involved	47.6%	31.0%	39.8%	48.9%	39.2%	41.3%
Never Involved	22.1%	52.0%	36.4%	33.3%	29.4%	34.0%
Number Responding	145	100	88	45	51	429
C. Professional Activities or Organizations						
Currently Involved	49.0%	41.0%	57.8%	40.0%	62.7%	49.7%
Have Been Involved	33.1%	31.0%	33.3%	40.0%	23.5%	32.3%
Never Involved	17.9%	28.0%	8.9%	20.0%	13.7%	18.1%
Number Responding	145	100	90	45	51	431
D. Volunteer Work / Community Svc Activities or Organizations						
Currently Involved	40.0%	31.0%	40.0%	24.4%	37.3%	36.0%
Have Been Involved	47.6%	37.0%	45.6%	51.1%	37.3%	43.9%
Never Involved	12.4%	32.0%	14.4%	24.4%	25.5%	20.2%
Number Responding	145	100	90	45	51	431

Southern Illinois University Edwardsville
Survey of 2009 Baccalaureate Graduates -- Five Years Out
Survey Responses -- Part IV
Educational Effectiveness Questions

School Detail, con't.	CAS	BUS	EDU	ENG	NUR	Total
E. Social / Recreational Activities or Organizations						
Currently Involved	44.8%	39.0%	46.7%	42.2%	27.5%	41.5%
Have Been Involved	42.1%	37.0%	41.1%	33.3%	49.0%	40.6%
Never Involved	13.1%	24.0%	12.2%	24.4%	23.5%	17.9%
Number Responding	145	100	90	45	51	431
F. Political Activities or Organizations						
Currently Involved	10.3%	7.0%	11.2%	4.4%	3.9%	8.4%
Have Been Involved	17.9%	10.0%	19.1%	17.8%	19.6%	16.5%
Never Involved	71.7%	83.0%	69.7%	77.8%	76.5%	75.1%
Number Responding	145	100	89	45	51	430
G. Religious / Ethical Activities or Organizations						
Currently Involved	24.8%	30.3%	39.8%	26.7%	19.6%	28.7%
Have Been Involved	25.5%	24.2%	30.7%	22.2%	29.4%	26.4%
Never Involved	49.7%	45.5%	29.5%	51.1%	51.0%	44.9%
Number Responding	145	99	88	45	51	428
H. Support or Participation in the Arts (music, drama, dance, art)						
Currently Involved	30.3%	13.0%	12.2%	8.9%	11.8%	18.1%
Have Been Involved	30.3%	27.0%	37.8%	28.9%	27.5%	30.6%
Never Involved	39.3%	60.0%	50.0%	62.2%	60.8%	51.3%
Number Responding	145	100	90	45	51	431
I. Reading Books not directly related to job.						
Currently Involved	77.2%	52.0%	62.2%	46.7%	58.8%	62.9%
Have Been Involved	19.3%	38.0%	27.8%	31.1%	31.4%	28.1%
Never Involved	3.4%	10.0%	10.0%	22.2%	9.8%	9.0%
Number Responding	145	100	90	45	51	431
20. The Three Issues Considered Most Important for SIUE						
A. Finding New Ways to Deliver Education						
Yes, One of the Three Most Important	13.8%	14.9%	22.0%	17.8%	23.5%	17.3%
Number Responding	20	15	20	8	12	75
B. Adding Additional Graduate Programs						
Yes, One of the Three Most Important	32.4%	8.9%	28.6%	13.3%	15.7%	22.2%
Number Responding	47	9	26	6	8	96
C. Enhancing Programs for Personal Enrichment						
Yes, One of the Three Most Important	7.6%	7.9%	15.4%	11.1%	5.9%	9.5%
Number Responding	11	8	14	5	3	41
D. Enhancing Professional Development Opportunities						
Yes, One of the Three Most Important	35.2%	47.5%	26.4%	44.4%	37.3%	37.4%
Number Responding	51	48	24	20	19	162
E. Holding Down the Cost of Tuition and Fees						
Yes, One of the Three Most Important	69.0%	58.4%	71.4%	64.4%	74.5%	67.2%
Number Responding	100	59	65	29	38	291
F. Improving Students' Preparation for Employment						
Yes, One of the Three Most Important	72.4%	82.2%	71.4%	75.6%	62.7%	73.7%
Number Responding	105	83	65	34	32	319
G. More Effectively Meeting the Training Needs of Employers						
Yes, One of the Three Most Important	17.9%	37.6%	19.8%	37.8%	31.4%	26.6%
Number Responding	26	38	18	17	16	115
H. Becoming More Efficient and Cost Effective						
Yes, One of the Three Most Important	27.6%	23.8%	26.4%	24.4%	39.2%	27.5%
Number Responding	40	24	24	11	20	119
I. Strengthening International Studies, Programs & Experiences						
Yes, One of the Three Most Important	15.9%	10.9%	7.7%	4.4%	5.9%	10.6%
Number Responding	23	11	7	2	3	46

Appendix A

Sample Questionnaire

SOUTHERN ILLINOIS UNIVERSITY EDWARDSVILLE

SURVEY OF 2009 BACCALAUREATE GRADUATES FIVE YEARS AFTER GRADUATION

Most of the questions in this survey can be answered simply by circling the appropriate number. We hope you will give us your help and valuable input so that we can design programs that better serve the needs of SIUE students. PLEASE ANSWER THESE QUESTIONS ONLY IN REGARD TO THE SIUE UNDERGRADUATE DEGREE YOU RECEIVED IN 2009. Your individual responses to this questionnaire will be kept completely confidential. Thank you for your cooperation. Please return this survey in the envelope provided.

I. Employment

1. Are you currently employed (including self-employed)?

- | | |
|------------------|--|
| 1 Yes, full-time | 3 No, but <u>am</u> seeking employment |
| 2 Yes, part-time | 4 No, and <u>am not</u> seeking employment |

If you are NOT employed (responses 3 and 4), skip to *Section II*.

2. What is the Zip Code of your place of employment (e.g., your actual workplace, not corporate headquarters)? _____

3. How would you classify your primary employer?

- | | |
|--|--|
| 1 Self-employed or private practice | 6 Health agency (e.g., hospital, clinic) |
| 2 Business (industrial, commercial or service) | 7 Federal, state, or local government |
| 3 Professional firm (e.g., engineering, law) | 8 Armed services |
| 4 College or university | 9 Non-profit (non-government) |
| 5 Elementary/secondary school (including cooperatives) | 0 Other (please specify) _____ |

4. How satisfied are you with your current job?

- | | | |
|------------------|-------------------------|---------------------|
| 1 Very Satisfied | 3 Somewhat Satisfied | 5 Dissatisfied |
| 2 Satisfied | 4 Somewhat Dissatisfied | 6 Very Dissatisfied |

5. How closely related is your current job to your bachelor's degree major?

- | | | |
|-------------------|-----------|-------------|
| 1 Closely Related | 2 Related | 3 Unrelated |
|-------------------|-----------|-------------|

If you marked "3" (unrelated), is this by choice?

- | | |
|-------|------|
| 1 Yes | 2 No |
|-------|------|

6. For how many different employers (companies, firms, agencies, schools, etc. — not individual "bosses") have you worked since you earned your bachelor's degree?

- | | |
|-------|-----------------|
| 1 One | 3 Three to six |
| 2 Two | 4 More than six |

7. What is your annual earned income before taxes in your current job? _____

8. From your current perspective, how well did your bachelor's degree prepare you for the career path you are following?

- | | | | | | |
|-------------|--------|--------------|----------------|----------|---------------|
| 1 Very Well | 2 Well | 3 Adequately | 4 Inadequately | 5 Poorly | 6 Very poorly |
|-------------|--------|--------------|----------------|----------|---------------|

9. Please circle on the lists below both your primary **occupation** (what you do) and the **industry** in which you are employed (where you do it). Although some occupations typically work within one industry, they may be employed in other industries also. An example would be a school nurse — Health: Registered Nurses (11) in Educational Services (15). Examples of the types of occupations contained in each category are provided in italics.

Please write in your actual job title _____ (optional)

Circle One

Occupational Categories

- 01 **Management** (*such as Executives, Financial Managers, Human Resources Managers, Sales & Agricultural Managers, Educational Administrators, Health Administrators*)
- 02 **Business Operations** (*such as Buyers & Purchasing Agents; Insurance Claims Adjusters/Examiners; Human Resources, Training, & Labor Relations Specialists; Management Analysts*)
- 03 **Financial Specialists** (*such as Accountants, Assessors, Appraisers, Financial & Credit Analysts, Underwriters, Loan Counselors/Officers*)
- 04 **Computer Specialists** (*such as Computer & Information Scientists, Programmers, Software Specialists, Database & Network Administrators and System Analysts*)
- 05 **Mathematical Scientists and Technicians** (*such as Mathematicians, Statisticians, Actuaries, & Mathematical Technicians*)
- 06 **Architects, Surveyors, and Cartographers**
- 07 **Engineers and Related Technicians** (*such as Agricultural, Civil, Computer Hardware, Electrical, Industrial, Mechanical, Materials & Construction Engineers and Technicians*)
- 08 **Life and Physical Scientists and Technicians** (*such as Agricultural & Food Scientists, Biologists, Medical Scientists, Chemists, Physicists, Atmospheric & Environmental Scientists, and Related Technicians*)
- 09 **Social Scientists** (*such as Economists, Psychologists, Market & Survey Researchers, Geographers, Historians, Sociologists, Anthropologists, Political Scientists & Urban Planners*)
- 10 **Health: Doctors** (*such as Physicians & Surgeons, Dentists, Veterinarians, Optometrists, Podiatrists, and Chiropractors*)
- 11 **Health: Registered Nurses**
- 12 **Health: Therapists** (*such as Occupational, Physical, Recreational, & Speech Therapists*)
- 13 **Health: Other Health Practitioners, Professionals, and Support Workers** (*such as Pharmacists, Dieticians, Physician Assistants, and all other Technicians/Assistants/Aides*)
- 14 **Community and Social Service** (*such as Counselors, Social Workers, Community & Religious Workers, Probation Officers.*)
- 15 **Legal: Attorneys/Judges**
- 16 **Legal: Legal Support Workers** (*such as Inspectors & Examiners, Legal Assistants, Safety & Health Inspectors*)
- 17 **Education: Early Childhood Teachers** (*such as Day Care, Pre-School, and Kindergarten Teachers*)
- 18 **Education: Elementary School Teachers**
- 19 **Education: Middle School Teachers**
- 20 **Education: Secondary School Teachers**
- 21 **Education: Special Education Teachers**
- 22 **Education: Other, except Administrators (see #1)** (*such as Postsecondary Teachers, Vocational Teachers, Teaching & Research Assistants, School Counselors, Other Teachers, Training Specialists, Aides & Assistants*)
- 23 **Library Occupations** (*such as Librarians, Archivists, Curators, and Library Technicians*)
- 24 **Arts and Design Workers** (*such as Designers and Fine & Craft Artists*)
- 25 **Entertainment, Performers, Sports and Related Workers** (*such as Musicians, Singers, Dancers, Actors, Producers, Directors, Composers, Athletes, Coaches, & Referees*)
- 26 **Media and Communication Workers** (*such as Writers & Editors, Announcers, News Analysts & Reporters, Public Relation Specialists, and Media & Communication Equipment Workers*)
- 27 **Sales** (*such as Real Estate, Retail, Insurance, & Securities Sales Agents; Wholesale & Manufacturing Sales Representatives; Telemarketers*)
- 28 **Office and Administration** (*such as Clerical & Support Personnel, Clerks, Claims Examiners, Tellers, Scheduling & Distribution Agents*)
- 29 **Protective Services** (*such as Fire Fighters, Correctional Officers, Police, Life Guards, Security Guards, Investigators*)
- 30 **Food Preparation and Serving** (*such as Cooks, Bartenders, Food Service Workers & Servers*)
- 31 **Buildings and Grounds Maintenance** (*such as Janitors, Cleaners, Landscaping & Groundskeeping Laborers*)
- 32 **Personal Care and Services** (*such as Flight Attendants, Child Care Workers, Hairstylists & Personal Care Workers, Hotel & Travel Industry Workers*)
- 33 **Farming, Fishing, and Forestry** (*such as Farm Workers, Animal Care Workers, Foresters, Loggers*)
- 34 **Construction and Extractive** (*such as Carpenters; Electricians; Painters; Construction, Oil & Mining Wrkrs; Plumbers*)
- 35 **Installation, Maintenance, and Repair** (*such as Telecommunications Workers; Automotive Repairers; Heating, Air Conditioning & Refrigeration Mechanics & Installers*)
- 36 **Production** (*such as Electrical & Electronic Equipment Assemblers; Food, Metal, Plastics, Printing, & Photography Industry Technicians & Workers*)
- 37 **Transportation and Material Moving** (*such as Pilots, Drivers, Air Traffic Controllers*)
- 38 **Military** (*Officers & Enlisted Personnel*)

Circle One

Industrial Categories

- 01 Agriculture, Forestry, and Fishing
- 02 Mining
- 03 Utilities
- 04 Construction
- 05 Manufacturing
- 06 Wholesale Trade
- 07 Retail Trade
- 08 Transportation
- 09 Information
- 10 Finance and Insurance
- 11 Real Estate and Rental and Leasing
- 12 Professional, Scientific and Technical Services
- 13 Management of Companies and Enterprises
- 14 Administrative and Support, Waste Mgmt & Remediation Svcs
- 15 Educational Services
- 16 Health Care and Social Assistance
- 17 Arts, Entertainment and Recreation
- 18 Accommodations and Food Services
- 19 Other Services (except Public Administration)
- 20 Public Administration

II. Education

10. Since completing your bachelor's degree, have you earned one or more additional post-secondary degrees?

- 1 Yes 2 No

If you have completed an additional degree, please indicate all of the additional degrees you have earned since your bachelor's degree:

- | | |
|---|---|
| 01 Associate's | 06 Health Professional (dentistry, pharmacy, podiatry, optometry, etc.) |
| 02 Second Bachelor's | 07 Theology/Divinity |
| 03 Academic Master's (MA, MS, MEd, etc.) | 08 Law (LLB, JD) |
| 04 Professional Master's (MBA, MSW, MFA, MPA, etc.) or Education Specialist | 09 Doctorate (PhD, EdD, DA, DBA, etc.) |
| 05 Medicine (MD, DO) | 10 Other, please specify: _____ |

11. Are you currently pursuing a postsecondary degree program?

- 1 Yes, full-time 2 Yes, part-time 3 No

If you are currently pursuing a degree, please indicate which degree below:

- | | |
|---|---|
| 01 Associate's | 06 Health Professional (dentistry, pharmacy, podiatry, optometry, etc.) |
| 02 Second Bachelor's | 07 Theology/Divinity |
| 03 Academic Master's (MA, MS, MEd, etc.) | 08 Law (LLB, JD) |
| 04 Professional Master's (MBA, MSW, MFA, MPA, etc.) or Education Specialist | 09 Doctorate (PhD, EdD, DA, DBA, etc.) |
| 05 Medicine (MD, DO) | 10 Other, please specify: _____ |

12. In general, how well did your bachelor's degree program prepare you for your additional degree program?

- 1 Very Well 2 Well 3 Adequately 4 Inadequately 5 Poorly 6 Very poorly

III. Satisfaction

13. What is your present attitude towards the University?

- 1 Strongly Positive 2 Positive 3 Somewhat Positive 4 Somewhat Negative 5 Negative 6 Strongly Negative

14. What is your present attitude towards your bachelor's degree major?

- 1 Strongly Positive 2 Positive 3 Somewhat Positive 4 Somewhat Negative 5 Negative 6 Strongly Negative

IV. Educational Effectiveness

15. Listed below are some abilities often mentioned as important for personal and professional success in the 21st century. In your view, how effective were your University experiences in —

	Extremely Helpful	Very Helpful	Moderately Helpful	Slightly Helpful	Not Helpful
A. helping you to better develop your critical thinking ability?	1	2	3	4	5
B. helping you to better develop your sense of ethics?	1	2	3	4	5
C. contributing to a greater understanding of people with different backgrounds, habits, values, appearances, and abilities?	1	2	3	4	5
D. helping you to become a more active citizen?	1	2	3	4	5
E. improving the quality of your life aside from financial benefits?	1	2	3	4	5
F. helping you to better develop your reasoning skills?	1	2	3	4	5
G. helping you to better develop your capacity to view problems from different perspectives?	1	2	3	4	5
H. helping you to better develop your ability to solve problems?	1	2	3	4	5
I. helping you to better develop your ability to make informed decisions as a citizen?	1	2	3	4	5
J. helping you to better develop your writing skills?	1	2	3	4	5

	Extremely Helpful	Very Helpful	Moderately Helpful	Slightly Helpful	Not Helpful
K. helping you to better develop your oral communication skills?	1	2	3	4	5
L. helping you to better develop your knowledge of scientific and technological developments?	1	2	3	4	5

16. My SIUE undergraduate education broadened my interest in issues beyond the subjects in my major.

1 Strongly Agree 2 Agree 3 Neutral 4 Disagree 5 Strongly Disagree

17. How important has your college education been to your —

	Very Important	Moderately Important	Slightly Important	Not Important
A. Personal Life	1	2	3	4
B. Community Life	1	2	3	4
C. Professional Life	1	2	3	4

18. How would you rate the quality of the education that you received from SIUE relative to the education that your friends and colleagues have received from other colleges or universities?

1 Among the Best 2 Above Average 3 Average 4 Below Average 5 Among the worst

19. Please indicate your involvement with each of the following since completing your bachelor's degree:

	Currently Involved	Have Been Involved	Never Involved
A. Organized, formal learning that is career related (non-degree)	1	2	3
B. Personal enrichment studies	1	2	3
C. Professional activities or organizations	1	2	3
D. Volunteer work / community service activities or organizations	1	2	3
E. Social/recreational activities or organizations	1	2	3
F. Political activities or organizations	1	2	3
G. Religious/ethical activities or organizations	1	2	3
H. Support or participation in the Arts (music, drama, dance, art)	1	2	3
I. Reading books not directly related to your job	1	2	3

20. Listed below are some issues which the University will face in the next few years. Which three issues do you consider to be the most important for the University to address?

Please circle three items.

- | | |
|---|--|
| A. Finding new ways to deliver instruction | F. Improving students' preparation for employment |
| B. Adding additional graduate programs | G. More effectively meeting the training needs of employers |
| C. Enhancing programs for personal enrichment | H. Becoming more efficient and cost effective |
| D. Enhancing professional development opportunities | I. Strengthening international studies, programs, and experience |
| E. Holding down the cost of tuition and fees | |

V. Comments