

Southern Illinois University at Edwardsville
Survey of 2001 Baccalaureate Graduates -- One Year Out

Survey Results for Schools

June 2003

Survey Administered By
The Office of Undergraduate Assessment and Program Review

Survey Results Compiled By
The Office of Institutional Research and Studies

Southern Illinois University at Edwardsville

Survey of 2001 Baccalaureate Graduates -- One Year Out

Contents

Introduction

Methodology

Survey Population and Respondents

- Charts: *2001 Baccalaureate Recipients, Profile*
- \$ Gender*
 - \$ Race/Ethnic*
 - \$ Age at Graduation*
 - \$ Matriculation Status*
 - \$ Time to Degree for New Freshmen*
 - \$ Time to Degree for New Transfers*

- Table: *Comparison of All Graduates to Survey Respondents*

Survey Results

- Charts: *2001 Baccalaureate Graduates One Year Out, Satisfaction*
- \$ Present Attitude Toward the University*
 - \$ Present Attitude Towards Alumni-s Bachelor-s Degree Major*
 - \$ Quality of SIUE Education Relative to That of Friends at Other Schools*

- 2001 Baccalaureate Graduates One Year Out, Additional Education*
- \$ Enrolled Since Bachelors Degree*
 - \$ How Well Bachelor-s Degree Prepared Alumni for Additional Degree*

- 2001 Baccalaureate Graduates One Year Out, Employment*
- \$ Employment Status*
 - \$ Place of Employment*
 - \$ Job in Field Related to Major?*
 - \$ Job Satisfaction*
 - \$ How Well Bachelor-s Degree Program Prepared Alumni for Present Job*
 - \$ Mean Salary of Alumni Employed Full Time*

- Helpfulness of University Experiences in:*
- \$ Developing Critical Thinking Ability*
 - \$ Developing Sense of Ethics*
 - \$ Understanding People with Different Backgrounds*
 - \$ Becoming a more Active Citizen*
 - \$ Improving Quality of Life (aside from financial benefits)*
 - \$ Developing Reasoning Skills*
 - \$ Viewing Problems from Different Perspectives*
 - \$ Developing Ability to Solve Problems*
 - \$ Making Informed Decisions as a Citizen*
 - \$ Developing Writing Skills*

\$ Developing Oral Communication Skills
\$ Developing Knowledge of Scientific and Technological Developments

Tables: *Part I Employment Questions*
Part II Education Questions
Part III Satisfaction Questions
Part IV Educational Practices Questions
Part V Program Quality Questions
Part VI Educational Effectiveness Questions

Questionnaire

Southern Illinois University Edwardsville Survey of 2001 Baccalaureate Graduates -- One Year Out

Introduction

This one-year out baccalaureate survey was done to provide data for the University's undergraduate program reviews and other planning uses, and to participate in the Illinois Board of Higher Education Baccalaureate Graduates- Follow-up System.

IBHE Survey Schedule and Population Definition		
Survey Year	Survey Type	Survey Group
1992	One-Year Out Survey	Class of >91
1993	Five-Year Out Survey	Class of >88
1994	Ten-Year Out Survey	Class of >84
1995	One-Year Out Survey	Class of >94
1996	Five-Year Out Survey	Class of >91
1997	Nine-Year Out Survey	Class of >88
1998	One-Year Out Survey	Class of >97
1999	Five-Year Out Survey	Class of >94
2000	Nine-Year Out Survey	Class of >91
2001	One-Year Out Survey	Class of >00
2002	Five-Year Out Survey	Class of >97
2003	Nine-Year Out Survey	Class of >94

After the first six years, the surveys were reviewed and changed, modifying some questions and value scales, and adding some additional questions.

The current survey was administered during the spring and summer of 2002 to calendar year 2001 baccalaureate graduates of SIUE. The questionnaire includes 18 questions common to all Illinois public universities. These are the first 18 questions in the survey, forming Parts I, II, III, and the beginning of Part IV (Employment Questions, Education Questions, Satisfaction Questions, and Educational Practices Questions). SIUE added to these one question on industry of employment and three additional questions on educational practices, and appended two additional parts to the survey to add questions about program quality, and educational effectiveness. A questionnaire is included following the results.

Methodology

The survey questionnaire and a cover letter were adapted from the questionnaire and letter developed for previous surveys. SIUE Alumni Services provided current addresses for calendar year 2001 graduates as determined from institutional records. The survey was distributed in May 2002 to May 2001 baccalaureate graduates and in August 2002 to August 2001 and December 2001 baccalaureate graduates. Each envelope included a cover letter, a questionnaire, and a postage-paid, pre-addressed return envelope. Each questionnaire was stamped with a sequential, identifying number which was also stamped on a listing of the graduates (this aided in identifying the surveys when returned).

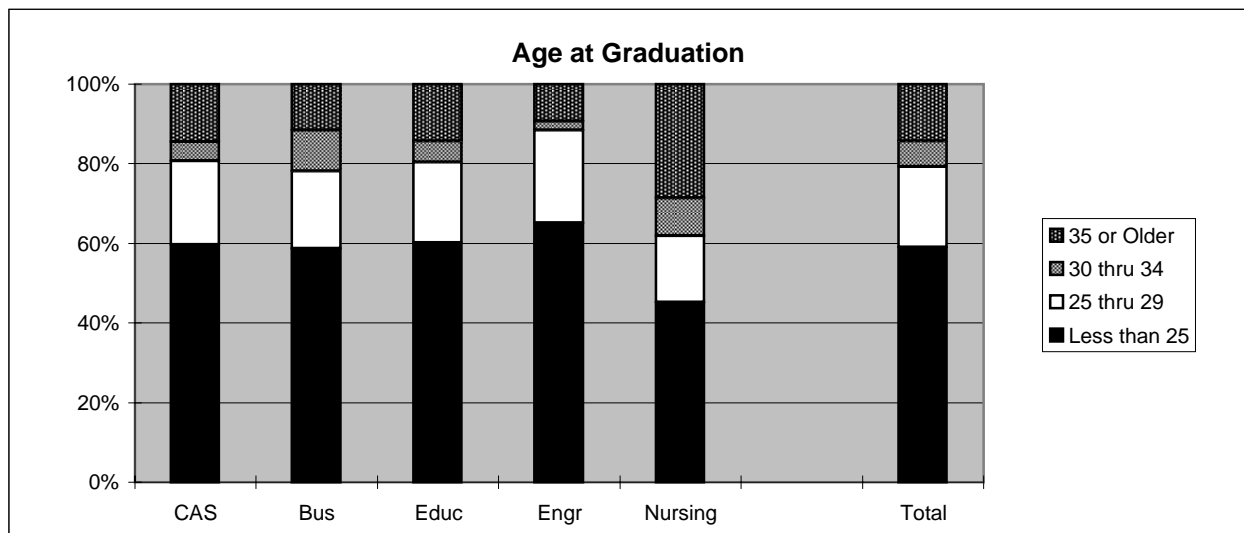
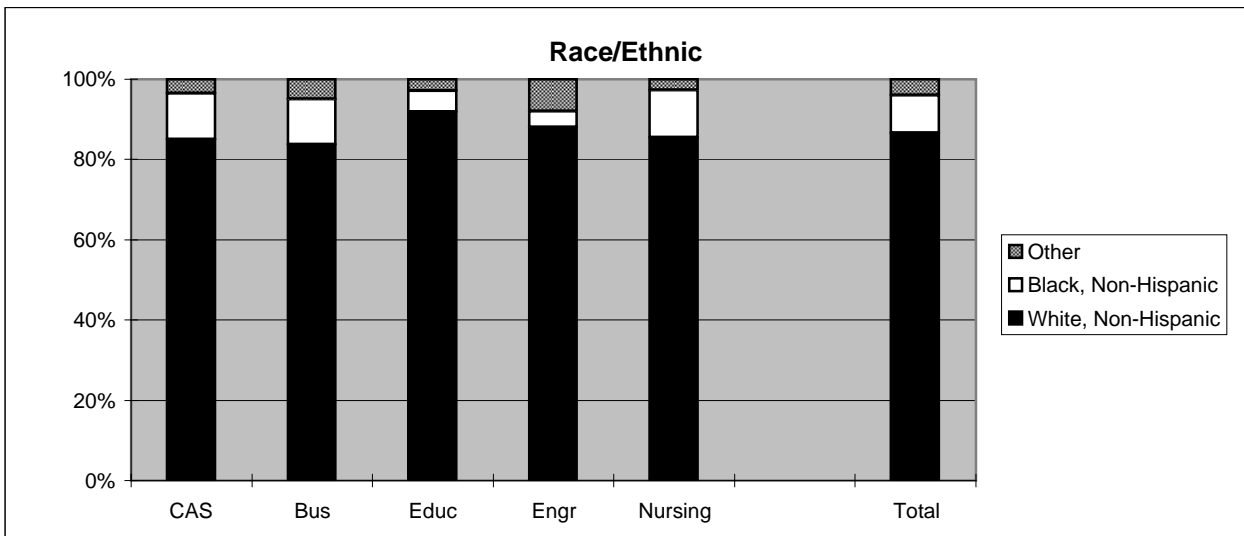
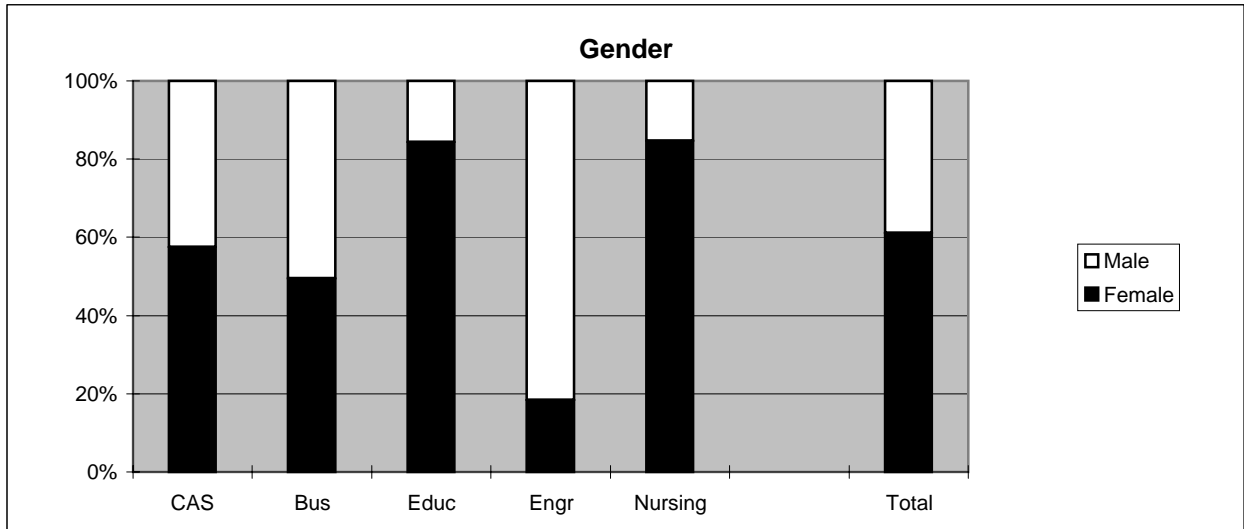
On April 29, 2002 approximately two weeks before the first set of surveys were to be mailed, a

postcard was sent to the 879 May 2001 baccalaureate graduates for whom addresses were available, notifying the alumni that they would be receiving a questionnaire and encouraging them to complete and return the survey. Surveys were mailed first class on May 13, 2002. On May 28st, approximately three weeks after the survey was mailed and when the rate of survey returns had decreased, a follow-up postcard requesting that the survey be returned was mailed to each student who had not returned his or her survey. On June 10th a second wave mailing of the surveys was sent to the 657 remaining non-respondents.

The second distribution began with the preliminary postcard mailed on July 29, 2002 to the 807 August and December 2001 baccalaureate graduates with known addresses. Surveys were mailed first class to this group on August 12, 2002 with a follow-up post card mailed to non-responders on August 26, 2002. A second wave mailing of the survey was sent to 601 non-responders on September 10, 2002.

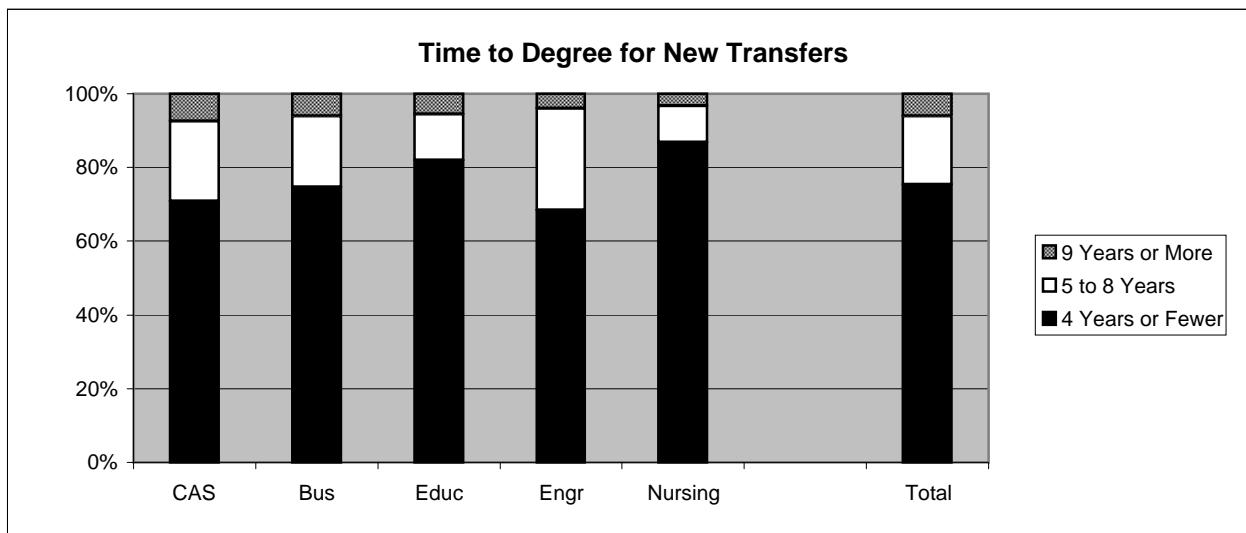
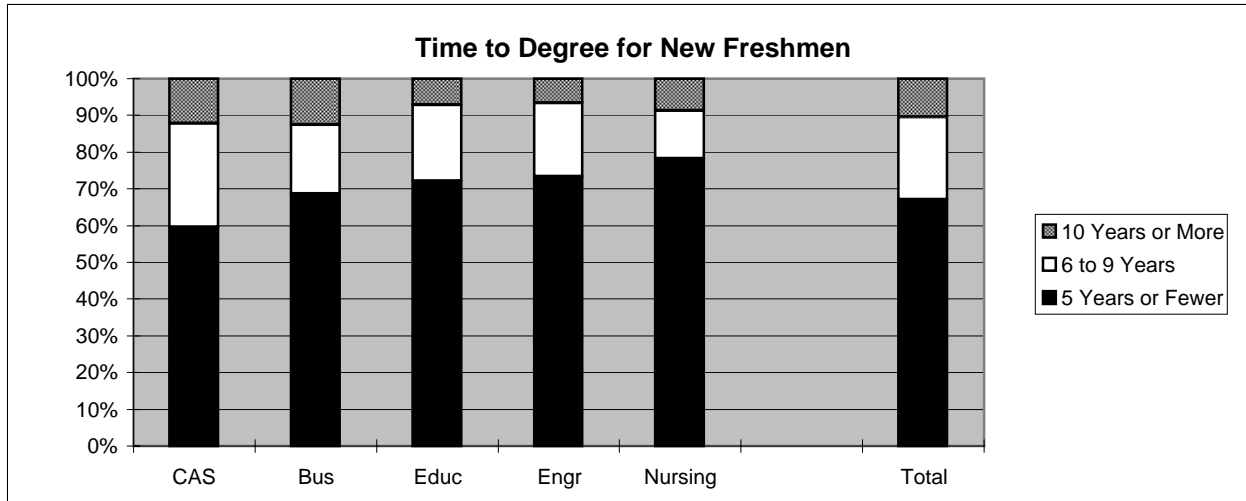
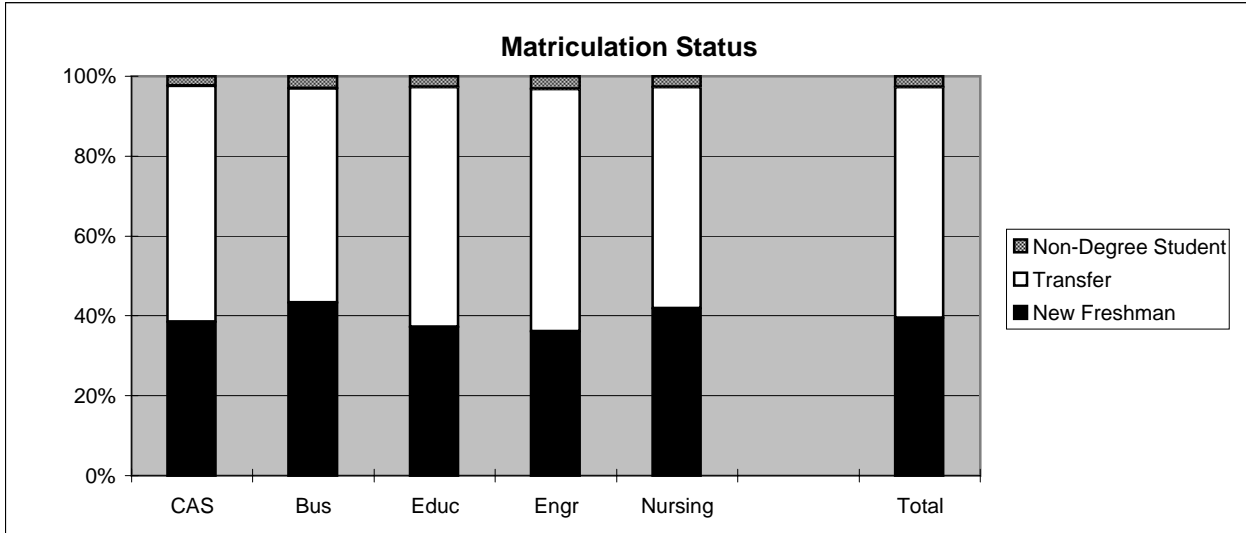
Returned surveys began arriving on May 15th and continued through the summer and fall, with a few arriving as late as January 2003. As the surveys came in, each was matched with the corresponding stamped listing. The students' names were then checked against the alphabetic list of alumni to verify (or, if the alumnus chose not to provide the identification number, to obtain) the student identification number. The student identification number was the key which allowed merging of survey data with administrative records (e.g., biographic, graduation, matriculation, and enrollment information).

2001 Baccalaureate Recipients Profile



2001 Baccalaureate Recipients

Profile, con't.



Southern Illinois University Edwardsville
Survey of 2001 Baccalaureate Graduates -- One Year Out

Survey Population and Respondents

	Number of Graduates
2001 Baccalaureate Degrees	1,702
Less persons who received 2 baccalaureate degrees	12
2001 Baccalaureate Graduates	1,690
Less Graduates with No Address Available *	4
Graduates Surveyed	1,686
Less Non-Deliverable Surveys	57
Less Non-Responding Graduates	993
Survey Respondents	636
Gross Response Rate (Respondents/Total Surveyed)	37.72%
Adjusted Response Rate (Respondents/Delivered Surveys)	39.04%

* Includes deceased alumni, foreign addresses and known bad addresses.

Southern Illinois University Edwardsville
Survey of 2001 Baccalaureate Graduates -- One Year Out

Comparison of All Graduates to Survey Respondents

School Detail	All Graduates					
	CAS	Bus	Educ	Engr	Nursing	Total
Total	637	404	414	125	110	1690
Female	57.5%	49.5%	84.3%	18.4%	84.5%	61.0%
Male	42.5%	50.5%	15.7%	81.6%	15.5%	39.0%
Missing Data	0.0%	0.0%	0.0%	0.0%	0.0%	0.0%
White, Non-Hispanic	85.1%	83.7%	91.8%	88.0%	85.5%	86.6%
Black, Non-Hispanic	11.5%	11.4%	5.3%	4.0%	11.8%	9.4%
Asian/Pacific Islander	1.6%	1.0%	1.2%	4.0%	1.8%	1.5%
American Indian/Alaskan Native	0.5%	0.7%	0.2%	0.0%	0.0%	0.4%
Hispanic	0.8%	1.2%	1.2%	0.8%	0.9%	1.0%
Non-Resident Alien	0.6%	2.0%	0.2%	3.2%	0.0%	1.0%
Missing Data	0.0%	0.0%	0.0%	0.0%	0.0%	0.0%
Age at Graduation	range	range	range	range	range	range
	21 to 68	21 to 51	20 to 51	21 to 45	22 to 62	20 to 68
	median	median	median	median	median	median
	23.4	22.9	23.1	23.5	23.4	23.2
Bachelor of Science	56.7%	87.4%	95.9%	93.6%	100.0%	79.2%
Bachelor of Music	1.4%	0.0%	0.0%	0.0%	0.0%	0.5%
Bachelor of Arts	27.0%	0.0%	4.1%	6.4%	0.0%	11.7%
Bachelor of Fine Arts	2.4%	0.0%	0.0%	0.0%	0.0%	0.9%
Bachelor of Sci in Accountancy	0.0%	12.6%	0.0%	0.0%	0.0%	3.0%
Bachelor of Liberal Studies	12.6%	0.0%	0.0%	0.0%	0.0%	4.7%
Missing Data	0.0%	0.0%	0.0%	0.0%	0.0%	0.0%
Graduated Spring 2001	47.1%	44.3%	64.3%	60.0%	57.3%	52.2%
Graduated Summer 2001	21.2%	22.3%	15.9%	8.0%	3.6%	18.0%
Graduated Fall 2001	31.7%	33.4%	19.8%	32.0%	39.1%	29.7%
Missing Data	0.0%	0.0%	0.0%	0.0%	0.0%	0.0%
Matriculated as a New Freshman	38.5%	43.3%	37.2%	36.0%	41.8%	39.3%
Matriculated as a Transfer	59.2%	53.7%	60.1%	60.8%	55.5%	58.0%
Matriculated as a Non-Degree Student	2.4%	3.0%	2.7%	3.2%	2.7%	2.7%
Missing Data	0.0%	0.0%	0.0%	0.0%	0.0%	0.0%
Time to Degree for New Freshmen						
3 Years or Fewer	0.0%	1.1%	1.3%	2.2%	0.0%	0.8%
4 Years	21.6%	27.4%	27.9%	35.6%	32.6%	26.3%
5 Years	38.0%	40.0%	42.9%	35.6%	45.7%	40.0%
6 Years	16.7%	9.7%	13.6%	11.1%	10.9%	13.4%
7 Years	6.9%	4.6%	4.5%	6.7%	2.2%	5.4%
8 Years	2.9%	4.6%	2.6%	0.0%	0.0%	2.9%
9 Years	1.6%	0.0%	0.0%	2.2%	0.0%	0.8%
10 Years	0.8%	0.0%	0.6%	2.2%	0.0%	0.6%
11 Years or More	11.4%	12.6%	6.5%	4.4%	8.7%	9.9%
Missing Data	0.0%	0.0%	0.0%	0.0%	0.0%	0.0%
Time to Degree for Transfers						
2 or Fewer Years	17.0%	17.5%	19.3%	7.9%	14.8%	16.8%
3 Years	30.0%	36.9%	43.8%	36.8%	39.3%	36.1%
4 Years	23.9%	20.3%	18.9%	23.7%	32.8%	22.3%
5 Years	12.2%	10.6%	6.4%	10.5%	8.2%	10.0%
6 Years	4.5%	5.1%	1.6%	6.6%	1.6%	3.9%
7 Years	3.4%	2.3%	3.6%	6.6%	0.0%	3.3%
8 Years	1.6%	1.4%	0.8%	3.9%	0.0%	1.4%
9 Years	0.8%	1.4%	0.8%	1.3%	0.0%	0.9%
10 Years or More	6.6%	4.6%	4.8%	2.6%	3.3%	5.2%
Missing Data	0.0%	0.0%	0.0%	0.0%	0.0%	0.0%
Graduating GPA (4 point scale)	Mean	Mean	Mean	Mean	Mean	Mean
	3.074	2.888	3.328	2.990	3.260	3.098
	Std Dev	Std Dev	Std Dev	Std Dev	Std Dev	Std Dev
	0.479	0.474	0.402	0.463	0.355	0.480

Southern Illinois University Edwardsville
Survey of 2001 Baccalaureate Graduates -- One Year Out

Comparison of All Graduates to Survey Respondents, con't.

School Detail	All One Year Out Survey Respondents						
	CAS	Bus	Educ	Engr	Nursing	Total	
Total	243	155	153	43	42	636	
Female	66.7%	55.5%	93.5%	11.6%	83.3%	67.8%	
Male	33.3%	44.5%	6.5%	88.4%	16.7%	32.2%	
Missing Data	0.0%	0.0%	0.0%	0.0%	0.0%	0.0%	
White, Non-Hispanic	86.0%	89.0%	94.1%	95.3%	81.0%	89.0%	
Black, Non-Hispanic	11.1%	8.4%	2.6%	0.0%	11.9%	7.7%	
Asian/Pacific Islander	0.8%	0.6%	2.0%	4.7%	4.8%	1.6%	
American Indian/Alaskan Native	0.8%	0.0%	0.0%	0.0%	0.0%	0.3%	
Hispanic	0.4%	0.6%	1.3%	0.0%	2.4%	0.8%	
Non-Resident Alien	0.8%	1.3%	0.0%	0.0%	0.0%	0.6%	
Missing Data	0.0%	0.0%	0.0%	0.0%	0.0%	0.0%	
Age at Graduation	range	21 to 68	21 to 50	21 to 51	21 to 45	21 to 62	21 to 68
	median	23.13	23.0	22.916	23.4	25.5	23.16
Bachelor of Science		58.4%	85.2%	96.7%	93.0%	100.0%	79.2%
Bachelor of Music		1.2%	0.0%	0.0%	0.0%	0.0%	0.5%
Bachelor of Arts		24.7%	0.0%	3.3%	7.0%	0.0%	10.7%
Bachelor of Fine Arts		2.1%	0.0%	0.0%	0.0%	0.0%	0.8%
Bachelor of Sci in Accountancy		0.0%	14.8%	0.0%	0.0%	0.0%	3.6%
Bachelor of Liberal Studies		13.6%	0.0%	0.0%	0.0%	0.0%	5.2%
Missing Data		0.0%	0.0%	0.0%	0.0%	0.0%	0.0%
Graduated Spring 2001		49.4%	43.2%	62.1%	69.8%	61.9%	53.1%
Graduated Summer 2001		21.0%	21.9%	19.6%	7.0%	2.4%	18.7%
Graduated Fall 2001		29.6%	34.8%	18.3%	23.3%	35.7%	28.1%
Missing Data		0.0%	0.0%	0.0%	0.0%	0.0%	0.0%
Matriculated as a New Freshman		45.7%	36.1%	37.3%	30.2%	21.4%	38.7%
Matriculated as a Transfer		52.7%	61.3%	60.8%	69.8%	71.4%	59.1%
Matriculated as a Non-Degree Student		1.6%	2.6%	2.0%	0.0%	7.1%	2.2%
Missing Data		0.0%	0.0%	0.0%	0.0%	0.0%	0.0%
Time to Degree for New Freshmen							
3 Years or Fewer		0.0%	0.0%	1.8%	7.7%	0.0%	0.8%
4 Years		24.3%	23.2%	29.8%	53.8%	55.6%	28.0%
5 Years		35.1%	41.1%	40.4%	23.1%	33.3%	37.0%
6 Years		12.6%	12.5%	10.5%	7.7%	11.1%	11.8%
7 Years		7.2%	5.4%	3.5%	7.7%	0.0%	5.7%
8 Years		3.6%	0.0%	3.5%	0.0%	0.0%	2.4%
9 Years		3.6%	0.0%	0.0%	0.0%	0.0%	1.6%
10 Years		0.0%	0.0%	0.0%	0.0%	0.0%	0.0%
11 Years or More		13.5%	17.9%	10.5%	0.0%	0.0%	12.6%
Missing Data		0.0%	0.0%	0.0%	0.0%	0.0%	0.0%
Time to Degree for Transfers							
2 or Fewer Years		14.1%	20.0%	21.5%	13.3%	13.3%	17.3%
3 Years		34.4%	38.9%	48.4%	36.7%	46.7%	40.2%
4 Years		25.8%	15.8%	14.0%	16.7%	30.0%	19.9%
5 Years		5.5%	11.6%	5.4%	13.3%	10.0%	8.0%
6 Years		4.7%	3.2%	2.2%	13.3%	0.0%	4.0%
7 Years		3.1%	3.2%	5.4%	3.3%	0.0%	3.5%
8 Years		3.9%	1.1%	0.0%	3.3%	0.0%	1.9%
9 Years		1.6%	2.1%	0.0%	0.0%	0.0%	1.1%
10 Years or More		7.0%	4.2%	3.2%	0.0%	0.0%	4.3%
Missing Data		0.0%	0.0%	0.0%	0.0%	0.0%	0.0%
Graduating GPA (4 point scale)	Mean	3.116	2.959	3.354	3.005	3.350	3.143
	Std Dev	0.505	0.472	0.405	0.500	0.336	0.488

Southern Illinois University Edwardsville
Survey of 2001 Baccalaureate Graduates -- One Year Ou
Survey Responses -- Part I
Employment Questions

School Detail	CAS	Bus	Educ	Engr	Nursing	Total
Number of Survey Respondents *	243	155	153	43	42	636
1. Number Employed:						
Full-time	64.0%	83.2%	76.3%	78.6%	85.7%	74.1%
Part-time	20.7%	7.1%	9.9%	7.1%	9.5%	13.1%
Not, but Seeking	7.0%	7.7%	6.6%	9.5%	0.0%	6.8%
Not, not Seeking	8.3%	1.9%	7.2%	4.8%	4.8%	6.0%
Number Responding	242	155	152	42	42	633
The remaining questions in Part I were to be answered only by respondents who were employed full-time or part-time.						
	205	140	131	36	40	552
2. Place of Employment						
Illinois	58.9%	44.3%	72.1%	48.6%	43.3%	56.7%
Missouri	29.7%	51.1%	23.0%	48.6%	26.7%	34.7%
Other	11.5%	4.6%	4.9%	2.9%	30.0%	8.6%
Number Responding	192	131	122	35	30	510
3. Classification of Primary Employer						
Self-Employed or Private Practice	6.0%	8.6%	0.8%	2.8%	0.0%	4.8%
Business (Industrial, Commercial or Service)	33.7%	64.3%	14.5%	41.7%	0.0%	35.0%
Professional Firm (e.g., Engineering, Law)	3.5%	10.7%	1.5%	36.1%	0.0%	6.8%
College or University	13.6%	2.9%	3.8%	5.6%	2.5%	7.1%
Elementary/Secondary School	12.1%	0.7%	61.8%	0.0%	0.0%	19.4%
Health Agency (e.g. Hospital, Clinic)	6.0%	2.9%	5.3%	0.0%	92.5%	11.0%
Federal, State, or Local Government	6.0%	4.3%	3.1%	13.9%	0.0%	4.9%
Armed Services	1.0%	1.4%	0.0%	0.0%	5.0%	1.1%
NonProfit (Non-Government)	12.1%	1.4%	6.9%	0.0%	0.0%	6.4%
Other	6.0%	2.9%	2.3%	0.0%	0.0%	3.5%
Number Responding	199	140	131	36	40	546
4. Job Satisfaction						
Very Satisfied	27.8%	26.4%	30.5%	63.9%	28.2%	30.5%
Satisfied	36.1%	35.0%	42.7%	19.4%	41.0%	36.7%
Somewhat Satisfied	19.5%	26.4%	17.6%	11.1%	23.1%	20.5%
Somewhat Dissatisfied	9.8%	6.4%	5.3%	0.0%	7.7%	7.1%
Dissatisfied	4.4%	3.6%	2.3%	2.8%	0.0%	3.3%
Very Dissatisfied	2.4%	2.1%	1.5%	2.8%	0.0%	2.0%
Number Responding	205	140	131	36	39	551
5. Job in Field?						
Closely Related	32.2%	43.9%	65.4%	77.8%	87.5%	50.0%
Related	28.3%	32.4%	20.8%	11.1%	12.5%	25.3%
Unrelated (choice unknown)	3.9%	0.0%	0.0%	2.8%	0.0%	1.6%
Unrelated (by choice)	16.1%	6.5%	8.5%	5.6%	0.0%	10.0%
Unrelated (not by choice)	19.5%	17.3%	5.4%	2.8%	0.0%	13.1%
Number Responding	205	139	130	36	40	550
6. Timing of Securing First Job After Degree						
Held the Same Job While Enrolled	28.3%	34.3%	14.5%	25.0%	25.0%	26.1%
Secured Job by Graduation	24.4%	17.1%	16.0%	66.7%	40.0%	24.5%
Secured Job After Graduation(timing unknown)	1.0%	0.0%	0.0%	0.0%	0.0%	0.4%
Less than 1 Month After Graduation	4.9%	4.3%	13.0%	2.8%	7.5%	6.7%
1 to 3 Months After Graduation	13.7%	15.0%	23.7%	0.0%	17.5%	15.8%
3 to 6 Months After Graduation	11.7%	12.1%	22.1%	0.0%	7.5%	13.2%
6 to 9 Months After Graduation	8.8%	13.6%	5.3%	0.0%	2.5%	8.2%
More than 9 Months After Graduation	7.3%	3.6%	5.3%	5.6%	0.0%	5.3%
Number Responding	205	140	131	36	40	552

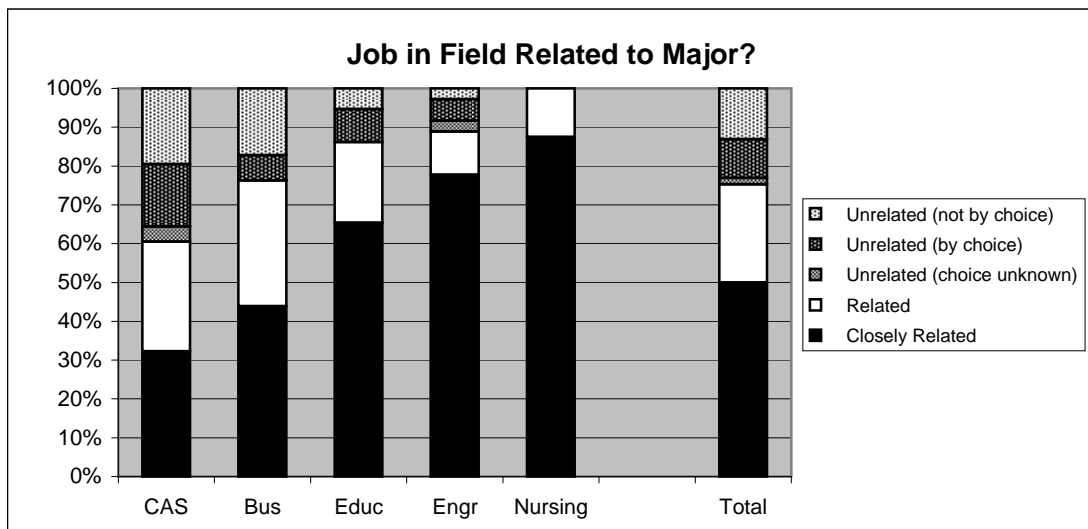
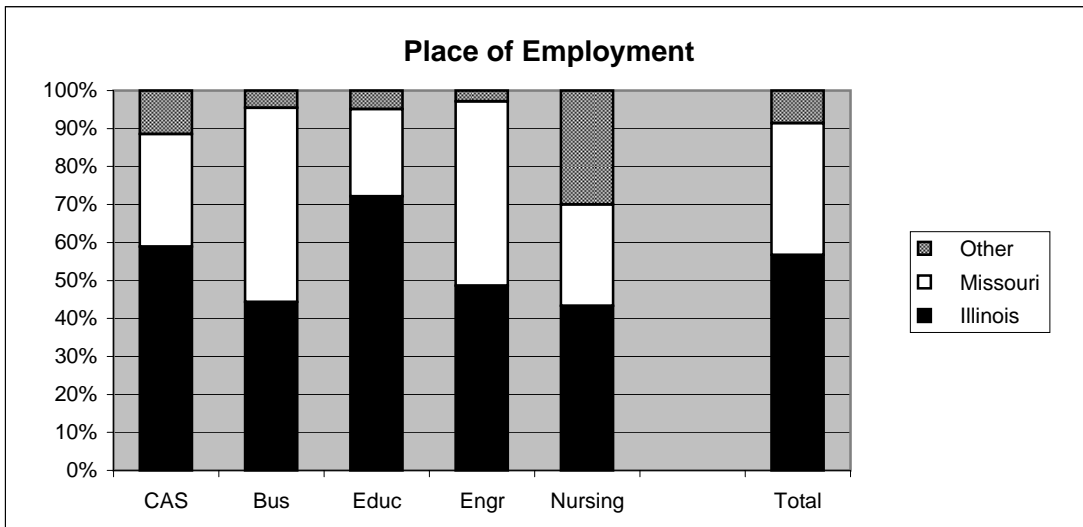
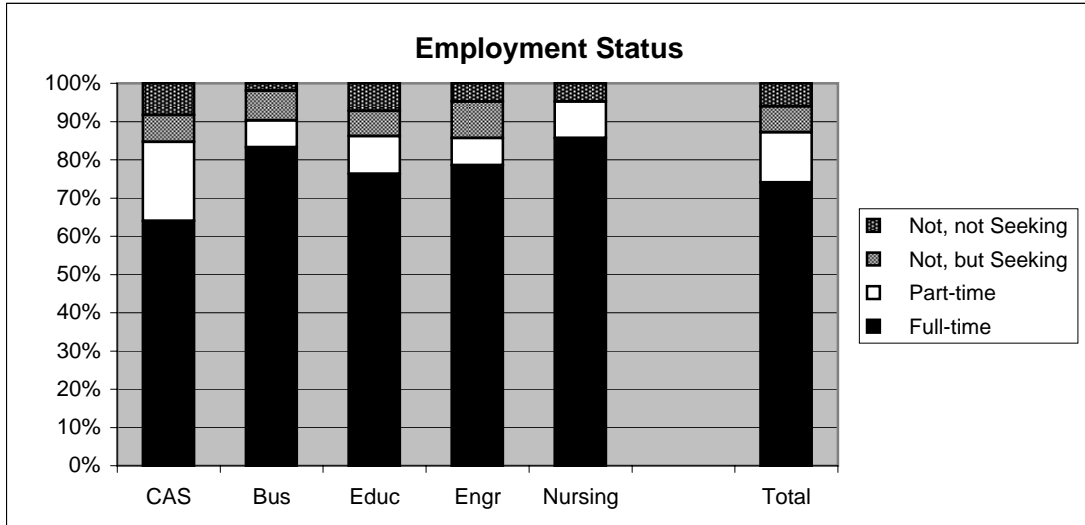
Southern Illinois University Edwardsville
Survey of 2001 Baccalaureate Graduates -- One Year Ou
Survey Responses -- Part I
Employment Questions

School Detail, con't.	CAS	Bus	Educ	Engr	Nursing	Total
7. Annual Earned Income in Current Job Before Taxes						
Employed Full-Time						
Less Than \$15,000	9.4%	1.6%	2.8%	3.1%	0.0%	4.5%
\$15,000 to 19,999	6.7%	3.3%	12.0%	0.0%	0.0%	6.1%
\$20,000 to \$24,999	18.8%	12.3%	19.4%	3.1%	0.0%	14.7%
\$25,000 to \$29,999	25.5%	17.2%	36.1%	0.0%	6.7%	22.7%
\$30,000 to \$34,999	17.4%	18.0%	27.8%	0.0%	56.7%	21.5%
\$35,000 to \$39,999	10.1%	6.6%	0.9%	9.4%	16.7%	7.3%
\$40,000 or More	12.1%	41.0%	0.9%	84.4%	20.0%	23.1%
Number Responding	149	122	108	32	30	441
Mean Salary	\$27,805	\$35,698	\$26,130	\$43,788	\$34,744	\$31,210
Employed Part-Time						
Less Than \$5,000	2.7%	0.0%	7.7%	33.3%	0.0%	4.5%
5,000 to \$9,999	29.7%	0.0%	46.2%	NA	0.0%	25.4%
\$10,000 to \$14,999	32.4%	10.0%	15.4%	NA	0.0%	22.4%
\$15,000 to \$19,999	16.2%	40.0%	23.1%	66.7%	0.0%	22.4%
\$20,000 or More	18.9%	50.0%	7.7%	NA	100.0%	25.4%
Number Responding	37	10	13	3	4	67
Mean Salary	\$13,821	\$19,662	\$11,295	\$12,833	\$25,492	\$11,677
8. Bachelor's Degree Preparation for Job						
Very Well	13.1%	5.1%	15.7%	25.0%	28.2%	13.5%
Well	27.6%	27.5%	37.0%	30.6%	20.5%	29.5%
Adequately	42.2%	48.6%	38.6%	38.9%	43.6%	42.9%
Inadequately	12.1%	12.3%	3.1%	0.0%	7.7%	8.9%
Poorly	2.0%	2.2%	4.7%	2.8%	0.0%	2.6%
Very Poorly	3.0%	4.3%	0.8%	2.8%	0.0%	2.6%
Number Responding	199	138	127	36	39	539
9a. Primary Occupation						
Management	11.1%	14.0%	1.6%	3.0%	2.6%	8.3%
Business Operations	3.7%	8.5%	3.2%	3.0%	0.0%	4.5%
Financial Specialists	3.2%	20.9%	0.0%	0.0%	0.0%	6.4%
Computer Specialists	0.5%	23.3%	0.0%	12.1%	0.0%	6.8%
Mathematical Scientists and Technicians	0.0%	0.0%	0.0%	0.0%	0.0%	0.0%
Architects, Surveyors, and Cartographers	1.6%	0.0%	0.0%	0.0%	0.0%	0.6%
Engineers and Related Technicians	0.5%	0.8%	0.0%	66.7%	0.0%	4.7%
Life & Physical Scientists, and Technicians	5.8%	0.8%	0.0%	0.0%	0.0%	2.3%
Social Scientists	4.2%	0.0%	0.8%	0.0%	0.0%	1.7%
Health: Doctors	0.0%	0.0%	0.0%	0.0%	0.0%	0.0%
Health: Registered Nurses	0.0%	0.0%	0.0%	0.0%	94.9%	7.2%
Health: Theratpists	0.0%	0.0%	0.0%	0.0%	0.0%	0.0%
Health: Oth Practitnrs, Prof.s, & Suppt Wkrs	6.8%	0.0%	5.6%	0.0%	0.0%	3.9%
Community & Social Service	8.4%	0.0%	9.6%	0.0%	0.0%	5.4%
Legal: Attorneys/Judges	0.0%	0.0%	0.0%	0.0%	0.0%	0.0%
Legal: Legal Support Workers	2.1%	2.3%	0.8%	0.0%	0.0%	1.6%
Education: Early Childhood Teachers	1.1%	0.0%	7.2%	0.0%	0.0%	2.1%
Education: Elementary School Teachers	1.1%	0.0%	36.0%	0.0%	0.0%	9.1%
Education: Middle School Teachers	3.2%	0.0%	8.8%	0.0%	0.0%	3.3%
Education: Secondary School Teachers	5.8%	0.0%	1.6%	0.0%	0.0%	2.5%
Education: Special Education Teachers	0.0%	0.0%	9.6%	0.0%	0.0%	2.3%
Education: Other, except Administrators	6.3%	0.0%	6.4%	3.0%	0.0%	4.1%
continued						

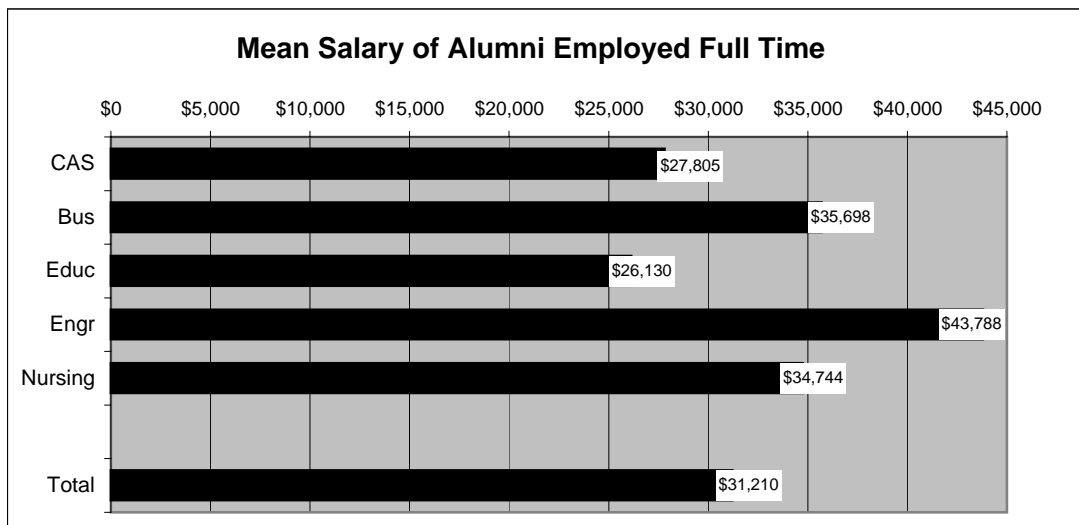
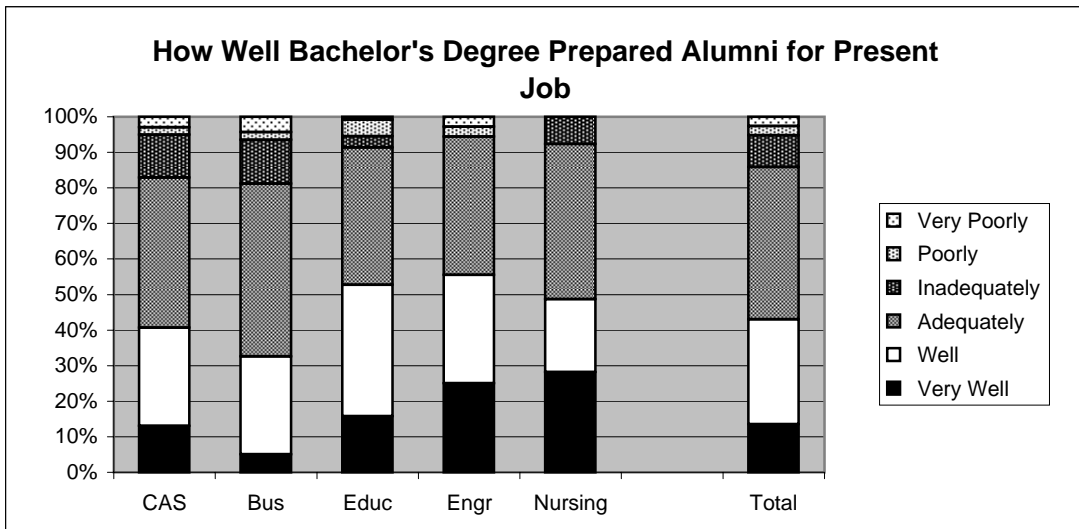
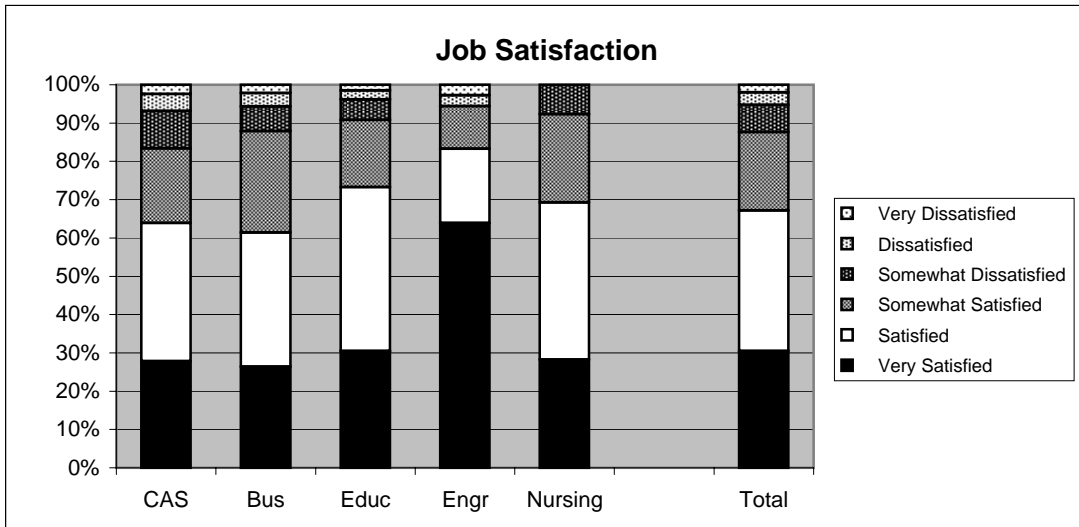
Southern Illinois University Edwardsville
Survey of 2001 Baccalaureate Graduates -- One Year Ou
Survey Responses -- Part I
Employment Questions

School Detail, con't.	CAS	Bus	Educ	Engr	Nursing	Total
9a. continuation of Primary Occupation						
Library Occupations	0.0%	0.0%	0.0%	0.0%	0.0%	0.0%
Art and Design Workers	2.1%	0.0%	0.0%	0.0%	0.0%	0.8%
Entertainment, Performers, Sports & Related	2.6%	0.8%	0.0%	0.0%	0.0%	1.2%
Media and Communication Workers	4.2%	0.8%	0.0%	0.0%	0.0%	1.7%
Sales	8.4%	12.4%	4.0%	3.0%	0.0%	7.4%
Office & Administration	6.3%	8.5%	0.8%	0.0%	0.0%	4.7%
Protective Services	1.6%	0.0%	0.0%	0.0%	0.0%	0.6%
Food Preparation & Serving	3.2%	0.8%	1.6%	3.0%	0.0%	1.9%
Buildings & Grounds Maintenance	0.5%	0.8%	0.0%	0.0%	0.0%	0.4%
Personal Care and Service	1.6%	0.0%	2.4%	0.0%	0.0%	1.2%
Farming, Fishing, and Forestry	0.0%	0.0%	0.0%	0.0%	0.0%	0.0%
Construction & Extractive	0.5%	2.3%	0.0%	3.0%	0.0%	1.0%
Installation, Maintenance, & Repair	0.5%	0.8%	0.0%	0.0%	0.0%	0.4%
Production	0.5%	0.8%	0.0%	0.0%	0.0%	0.4%
Transportation and Material Moving	1.6%	0.0%	0.0%	3.0%	0.0%	0.8%
Military	1.1%	1.6%	0.0%	0.0%	2.6%	1.0%
Number Responding	190	129	125	33	39	516
9b. Industry						
Agriculture, Forestry, and Fishing	1.4%	0.9%	0.0%	0.0%	0.0%	0.8%
Mining	0.0%	1.9%	0.0%	0.0%	0.0%	0.5%
Utilities	0.7%	8.4%	0.0%	8.3%	0.0%	3.1%
Construction	0.7%	2.8%	0.0%	37.5%	0.0%	3.3%
Manufacturing	1.4%	3.7%	0.0%	0.0%	0.0%	1.5%
Wholesale Trade	0.7%	0.9%	0.0%	0.0%	0.0%	0.5%
Retail Trade	11.8%	10.3%	2.3%	0.0%	0.0%	7.7%
Transportation	1.4%	5.6%	1.1%	16.7%	0.0%	3.3%
Information	2.8%	11.2%	0.0%	0.0%	0.0%	4.1%
Finance & Insurance	4.9%	13.1%	1.1%	0.0%	0.0%	5.7%
Real Estate & Rental & Leasing	3.5%	6.5%	0.0%	0.0%	0.0%	3.1%
Professional, Scientific & Technical Services	9.7%	14.0%	2.3%	25.0%	0.0%	9.5%
Management of Companies & Enterprises	0.0%	1.9%	1.1%	0.0%	0.0%	0.8%
Admin & Suppt, Waste Mgmt & Remedtn Svcs	2.8%	0.0%	0.0%	0.0%	0.0%	1.0%
Educational Services	19.4%	0.9%	63.6%	8.3%	0.0%	22.4%
Health Care & Social Assistance	16.7%	2.8%	18.2%	0.0%	100.0%	17.7%
Arts, Entertainment & Recreation	7.6%	3.7%	1.1%	0.0%	0.0%	4.1%
Accommodations & Food Services	4.9%	0.0%	2.3%	0.0%	0.0%	2.3%
Other Services (except Public Admin)	5.6%	10.3%	6.8%	4.2%	0.0%	6.7%
Public Administration	4.2%	0.9%	0.0%	0.0%	0.0%	1.8%
Number Responding	144	107	88	24	26	389

2001 Baccalaureate Graduates One Year Out *Employment*



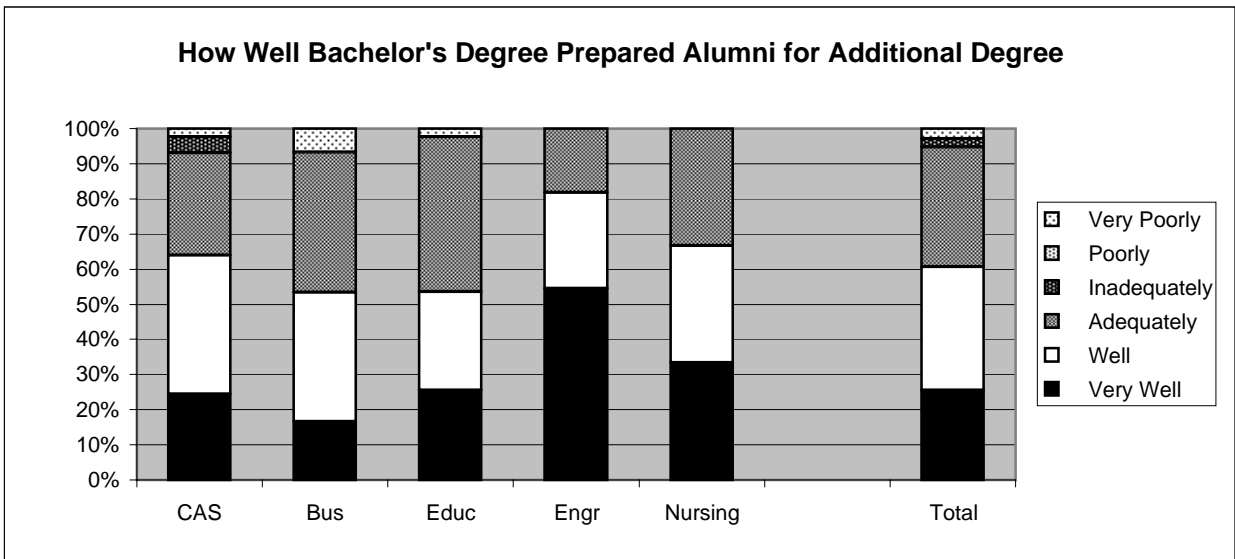
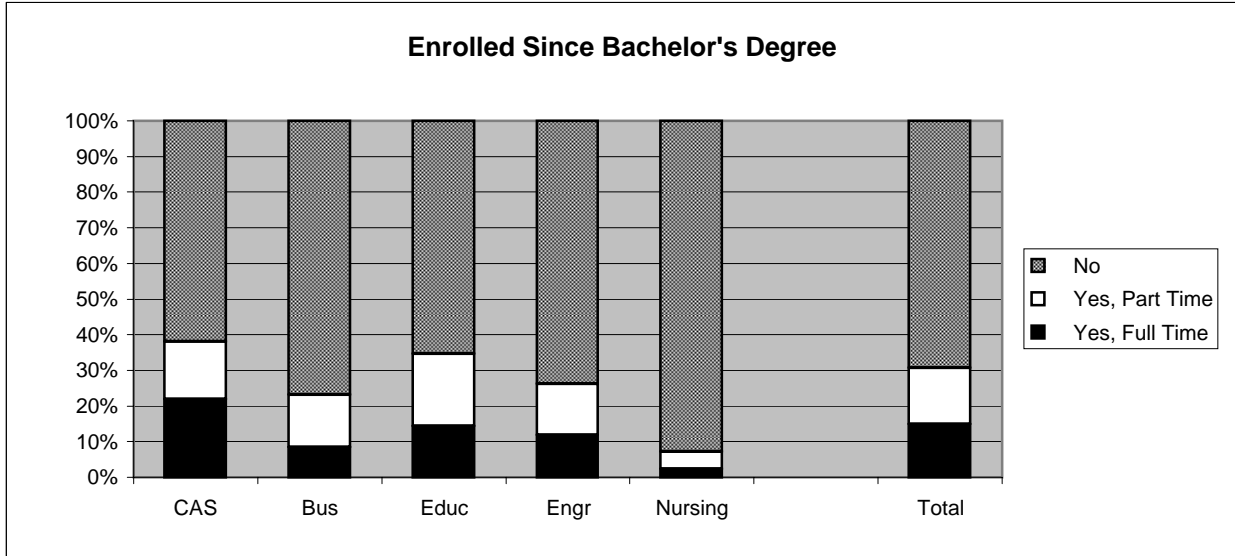
2001 Baccalaureate Graduates One Year Out *Employment, con't.*



Southern Illinois University Edwardsville
Survey of 2001 Baccalaureate Graduates -- One Year Out
Survey Responses -- Part II
Education Questions

School Detail	CAS	Bus	Educ	Engr	Nursing	Total
Number of Survey Respondents	243	155	153	43	42	636
10. Enrolled in College or University Since Degree?						
Yes, Full Time	21.9%	8.4%	14.4%	11.9%	2.4%	14.8%
Yes, Part Time	16.1%	14.8%	20.3%	14.3%	4.8%	15.9%
No	62.0%	76.8%	65.4%	73.8%	92.9%	69.2%
Number Responding	242	155	153	42	42	634
11. Pursuing or Have Completed an Additional Degree?						
Yes	68.8%	54.5%	63.8%	68.8%	27.3%	63.0%
No	31.2%	45.5%	36.2%	31.3%	72.7%	37.0%
Number Responding	125	55	69	16	11	276
The remaining questions in Part II were to be answered only by respondents who were pursuing or had completed another degree.						
	86	30	44	11	3	174
11b. Pursuing or Completed Which Degree?						
Associate's	2.4%	3.3%	0.0%	0.0%	0.0%	1.7%
Second Bachelor's	4.7%	10.0%	0.0%	9.1%	0.0%	4.7%
Academic Master's (MA, MS, MEd, etc)	45.9%	13.3%	65.1%	72.7%	33.3%	46.5%
Prof. Master's or Ed Specialist	27.1%	56.7%	25.6%	9.1%	0.0%	30.2%
Medicine (MD, OD)	2.4%	0.0%	0.0%	0.0%	0.0%	1.2%
Health Prof. (dentistry, pharmacy, etc.)	5.9%	0.0%	2.3%	0.0%	33.3%	4.1%
Theology/Divinity	1.2%	0.0%	0.0%	0.0%	0.0%	0.6%
Law (LLB, JD)	2.4%	3.3%	0.0%	0.0%	0.0%	1.7%
Doctorate (PhD, EdD, DA, DBA, etc.)	2.4%	0.0%	4.7%	0.0%	0.0%	2.3%
Other	5.9%	13.3%	2.3%	9.1%	33.3%	7.0%
Number Responding	85	30	43	11	3	172
12. How Well Bach. Degree Prepared You for Additional Degree						
Very Well	24.4%	16.7%	25.6%	54.5%	33.3%	25.4%
Well	39.5%	36.7%	27.9%	27.3%	33.3%	35.3%
Adequately	29.1%	40.0%	44.2%	18.2%	33.3%	34.1%
Inadequately	4.7%	0.0%	0.0%	0.0%	0.0%	2.3%
Poorly	0.0%	0.0%	0.0%	0.0%	0.0%	0.0%
Very Poorly	2.3%	6.7%	2.3%	0.0%	0.0%	2.9%
Number Responding	86	30	43	11	3	173

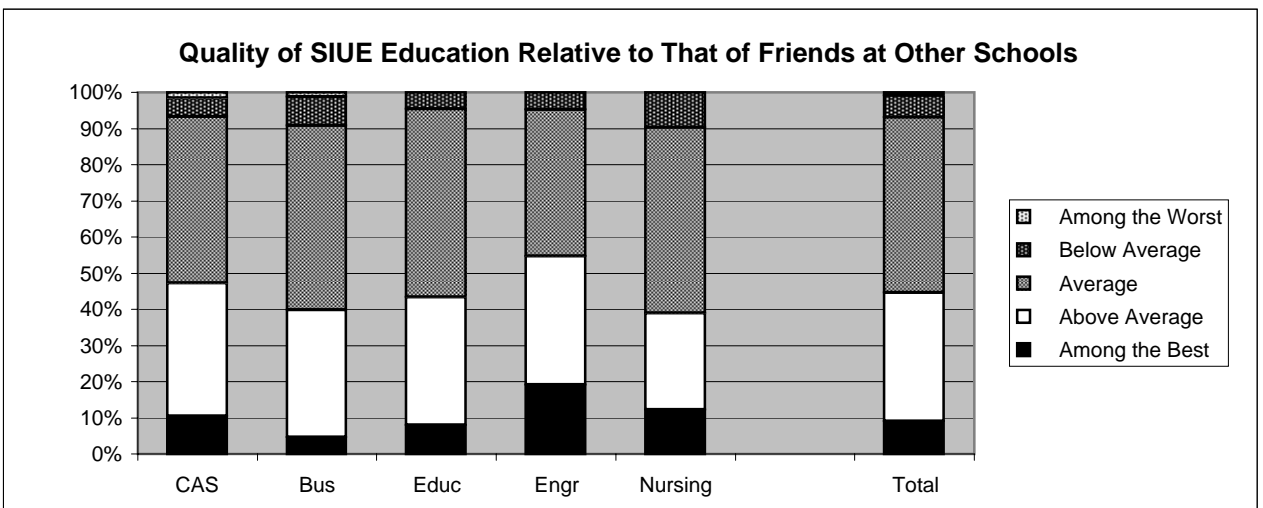
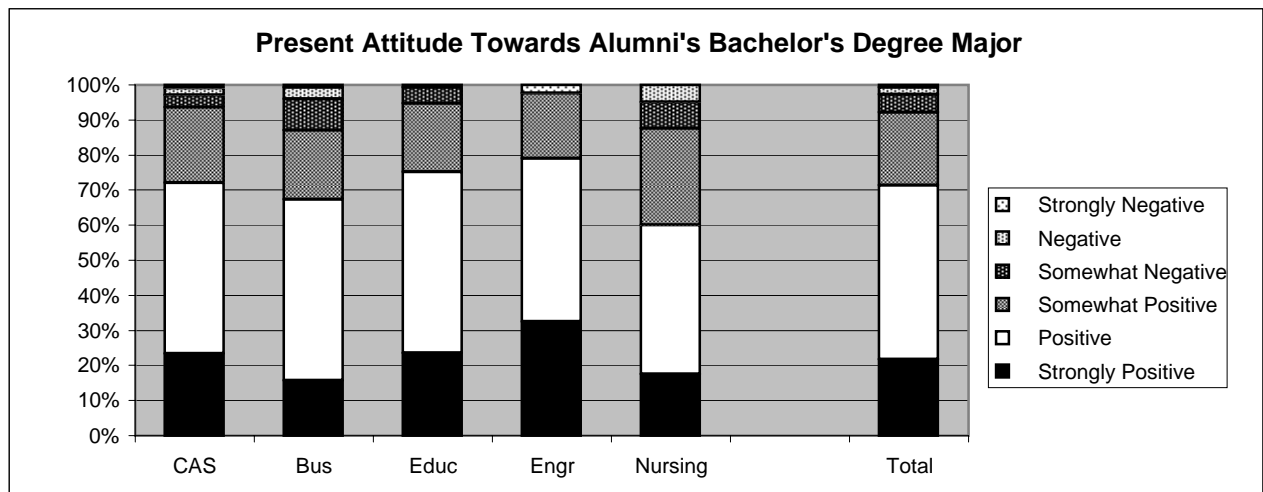
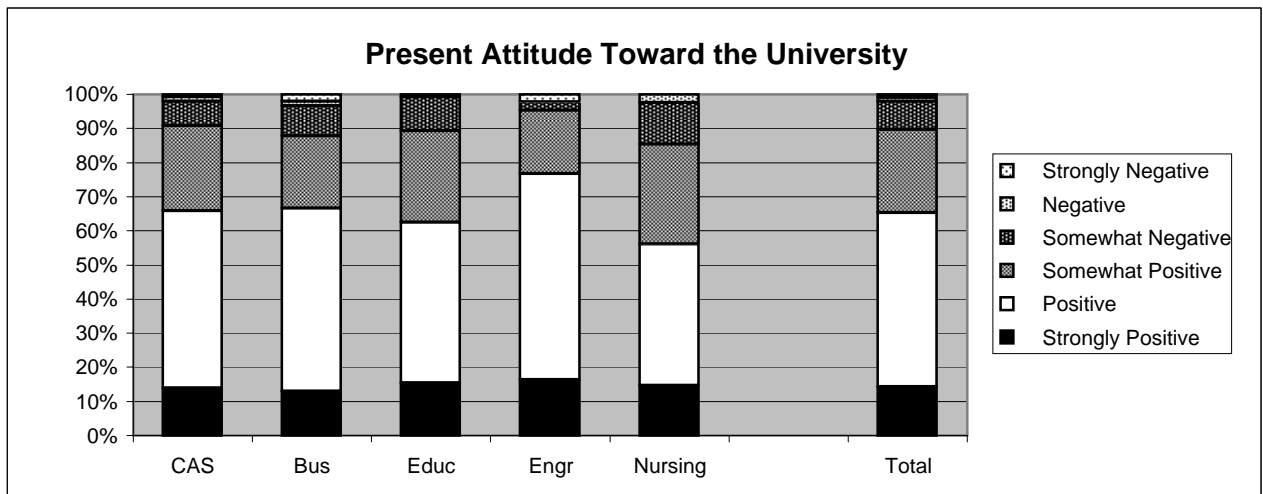
2001 Baccalaureate Graduates One Year Out Additional Education



Southern Illinois University Edwardsville
Survey of 2001 Baccalaureate Graduates -- One Year Out
Survey Responses -- Part III
Satisfaction Questions

School Detail	CAS	Bus	Educ	Engr	Nursing	Total
Number of Survey Respondents	243	155	153	43	42	636
13. Present Attitude Towards the University						
Strongly Positive	13.9%	12.9%	15.4%	16.3%	14.6%	14.3%
Positive	51.9%	53.7%	47.0%	60.5%	41.5%	51.1%
Somewhat Positive	24.9%	21.1%	26.8%	18.6%	29.3%	24.3%
Somewhat Negative	7.2%	8.8%	10.1%	2.3%	12.2%	8.3%
Negative	1.3%	1.4%	0.7%	0.0%	2.4%	1.1%
Strongly Negative	0.8%	2.0%	0.0%	2.3%	0.0%	1.0%
Number Responding	237	147	149	43	41	617
14. Present Attitude Towards your Bachelor's Degree Major						
Strongly Positive	23.3%	15.6%	23.5%	32.6%	17.5%	21.8%
Positive	48.7%	51.7%	51.7%	46.5%	42.5%	49.6%
Somewhat Positive	21.6%	19.7%	19.5%	18.6%	27.5%	20.8%
Somewhat Negative	3.4%	8.8%	4.7%	0.0%	7.5%	5.0%
Negative	2.1%	3.4%	0.0%	0.0%	5.0%	2.0%
Strongly Negative	0.8%	0.7%	0.7%	2.3%	0.0%	0.8%
Number Responding	236	147	149	43	40	615

2001 Baccalaureate Graduates One Year Out Satisfaction



Southern Illinois University Edwardsville
Survey of 2001 Baccalaureate Graduates -- One Year Out
Survey Responses -- Part IV
Educational Practices Questions

School Detail	CAS	Bus	Educ	Engr	Nursing	Total
Number of Survey Respondents	243	155	153	43	42	636
15. Faculty in Major Were Accessible Outside of Class						
Very Often	34.9%	17.4%	19.0%	42.9%	16.7%	26.1%
Often	46.1%	49.0%	46.4%	40.5%	54.8%	47.1%
Sometimes	17.8%	30.3%	33.3%	16.7%	26.2%	25.1%
Infrequently	1.2%	3.2%	1.3%	0.0%	2.4%	1.7%
Never	0.0%	0.0%	0.0%	0.0%	0.0%	0.0%
Number Responding	241	155	153	42	42	633
16. In Major, Student was Expected to Work Cooperatively with Other Students						
Very Often	28.9%	58.1%	43.1%	26.2%	29.3%	39.3%
Often	36.8%	33.5%	39.9%	50.0%	51.2%	38.5%
Sometimes	28.5%	7.7%	13.1%	19.0%	14.6%	18.2%
Infrequently	5.4%	0.6%	3.9%	4.8%	4.9%	3.8%
Never	0.4%	0.0%	0.0%	0.0%	0.0%	0.2%
Number Responding	242	155	153	42	41	633
17. In Major, Faculty Encouraged Student to Challenge Ideas (student's, other students, and in readings & materials)						
Very Often	28.6%	12.3%	18.3%	19.0%	14.3%	20.5%
Often	41.5%	39.4%	36.6%	28.6%	31.0%	38.2%
Sometimes	22.8%	34.2%	33.3%	38.1%	42.9%	30.5%
Infrequently	6.2%	11.0%	7.8%	14.3%	11.9%	8.7%
Never	0.8%	3.2%	3.9%	0.0%	0.0%	2.1%
Number Responding	241	155	153	42	42	633
18. In Major, Faculty Used Appropriate Teaching Activities to Help Student Learn						
Very Often	31.8%	11.0%	22.9%	19.0%	19.0%	22.9%
Often	45.5%	51.0%	54.2%	50.0%	31.0%	48.3%
Sometimes	20.2%	31.6%	19.6%	23.8%	45.2%	24.8%
Infrequently	2.1%	6.5%	2.6%	7.1%	4.8%	3.8%
Never	0.4%	0.0%	0.7%	0.0%	0.0%	0.3%
Number Responding	242	155	153	42	42	634
19. In Major, Faculty had High Expectations for Quality Of Student Work						
Very Often	33.1%	21.9%	33.3%	40.5%	33.3%	30.9%
Often	49.2%	54.8%	51.6%	33.3%	52.4%	50.3%
Sometimes	14.9%	20.6%	13.7%	21.4%	11.9%	16.2%
Infrequently	2.5%	2.6%	1.3%	4.8%	2.4%	2.4%
Never	0.4%	0.0%	0.0%	0.0%	0.0%	0.2%
Number Responding	242	155	153	42	42	634
20. In Major, Faculty Provided Timely Feedback						
Very Often	32.0%	12.3%	23.5%	23.8%	23.8%	24.0%
Often	51.0%	60.6%	51.6%	54.8%	47.6%	53.6%
Sometimes	13.3%	22.6%	24.2%	21.4%	26.2%	19.6%
Infrequently	3.7%	4.5%	0.7%	0.0%	2.4%	2.8%
Never	0.0%	0.0%	0.0%	0.0%	0.0%	0.0%
Number Responding	241	155	153	42	42	633

Southern Illinois University Edwardsville
Survey of 2001 Baccalaureate Graduates -- One Year Out
Survey Responses -- Part IV
Educational Practices Questions

School Detail, cont'd	CAS	Bus	Educ	Engr	Nursing	Total
21. In Major, Faculty Encouraged Students' Questions and Discussion in Class						
Very Often	45.9%	29.0%	35.3%	45.2%	21.4%	37.5%
Often	43.4%	53.5%	46.4%	38.1%	50.0%	46.7%
Sometimes	9.9%	16.8%	16.3%	11.9%	19.0%	13.9%
Infrequently	0.8%	0.6%	2.0%	4.8%	9.5%	1.9%
Never	0.0%	0.0%	0.0%	0.0%	0.0%	0.0%
Number Responding	242	155	153	42	42	634
22. In Major, Student Spent Necessary Time and Energy to Come to Class Prepared						
Very Often	41.7%	33.1%	48.4%	28.6%	54.8%	41.2%
Often	45.9%	47.4%	43.8%	54.8%	35.7%	45.7%
Sometimes	10.7%	17.5%	7.2%	16.7%	9.5%	11.8%
Infrequently	1.2%	1.9%	0.7%	0.0%	0.0%	1.1%
Never	0.4%	0.0%	0.0%	0.0%	0.0%	0.2%
Number Responding	242	154	153	42	42	633

Southern Illinois University Edwardsville
Survey of 2001 Baccalaureate Graduates -- One Year Out
Survey Responses -- Part V
Program Quality Questions

School Detail	CAS	Bus	Educ	Engr	Nursing	Total
Number of Survey Respondents	243	155	153	43	42	636
23A. Quality of Major in Offering						
Sufficient Courses						
Excellent	33.9%	25.2%	23.5%	23.8%	31.0%	28.4%
Good	46.7%	60.0%	60.1%	57.1%	47.6%	53.9%
Fair	17.4%	12.9%	13.1%	16.7%	16.7%	15.1%
Poor	2.1%	1.9%	3.3%	2.4%	4.8%	2.5%
Number Responding	242	155	153	42	42	634
23B. Quality of Major in Offering						
Convenient Class Times						
Excellent	26.6%	20.6%	14.4%	21.4%	11.9%	20.9%
Good	52.7%	53.5%	52.9%	33.3%	42.9%	51.0%
Fair	17.0%	20.0%	28.1%	40.5%	35.7%	23.2%
Poor	3.7%	5.8%	4.6%	4.8%	9.5%	4.9%
Number Responding	241	155	153	42	42	633
23C. Quality of Major in Offering						
Logical Class Sequences						
Excellent	29.8%	25.8%	21.3%	21.4%	16.7%	25.4%
Good	55.0%	58.7%	59.3%	71.4%	54.8%	58.0%
Fair	12.0%	12.3%	17.3%	7.1%	21.4%	13.6%
Poor	3.3%	3.2%	2.0%	0.0%	7.1%	3.0%
Number Responding	242	155	150	42	42	631
24 Quality of Faculty in Major						
Excellent	46.3%	23.2%	32.2%	47.6%	17.1%	35.4%
Good	43.0%	58.7%	53.9%	45.2%	48.8%	50.0%
Fair	9.1%	16.1%	12.5%	7.1%	29.3%	12.8%
Poor	1.7%	1.9%	1.3%	0.0%	4.9%	1.7%
Number Responding	242	155	152	42	41	632
25 Grading Standards in Major Were:						
Too High	2.1%	5.2%	2.0%	11.9%	0.0%	3.3%
About Right	90.8%	91.6%	90.8%	81.0%	85.4%	90.0%
Too Low	7.1%	3.2%	7.2%	7.1%	14.6%	6.7%
Number Responding	239	155	152	42	41	629

Southern Illinois University Edwardsville
Survey of 2001 Baccalaureate Graduates -- One Year Out
Survey Responses -- Part VI
Educational Effectiveness Questions

School Detail	CAS	Bus	Educ	Engr	Nursing	Total
Number of Survey Respondents	243	155	153	43	42	636
26. Helpfulness of University Experiences in:						
A. Developing Critical Thinking Ability						
Extremely Helpful	19.8%	13.5%	10.5%	7.1%	19.0%	15.1%
Very Helpful	49.8%	42.6%	46.1%	71.4%	31.0%	47.3%
Moderately Helpful	23.9%	39.4%	36.2%	16.7%	38.1%	31.1%
Slightly Helpful	5.3%	3.2%	5.3%	4.8%	9.5%	5.0%
Not Helpful	1.2%	1.3%	2.0%	0.0%	2.4%	1.4%
Number Responding	243	155	152	42	42	634
B. Developing Sense of Ethics						
Extremely Helpful	18.1%	5.8%	10.5%	9.5%	16.7%	12.6%
Very Helpful	34.2%	37.4%	38.6%	45.2%	31.0%	36.5%
Moderately Helpful	29.6%	40.0%	33.3%	33.3%	26.2%	33.1%
Slightly Helpful	11.5%	12.3%	11.8%	9.5%	21.4%	12.3%
Not Helpful	6.6%	4.5%	5.9%	2.4%	4.8%	5.5%
Number Responding	243	155	153	42	42	635
C. Understanding People with Different Backgrounds, Habits, Values, Appearances and Abilities						
Extremely Helpful	33.3%	17.5%	21.6%	23.8%	21.4%	25.2%
Very Helpful	33.7%	34.4%	37.3%	26.2%	38.1%	34.5%
Moderately Helpful	23.5%	34.4%	24.8%	38.1%	31.0%	27.9%
Slightly Helpful	6.6%	9.7%	11.8%	11.9%	7.1%	9.0%
Not Helpful	2.9%	3.9%	4.6%	0.0%	2.4%	3.3%
Number Responding	243	154	153	42	42	634
D. Becoming a More Active Citizen						
Extremely Helpful	12.0%	3.9%	7.2%	9.5%	11.9%	8.7%
Very Helpful	26.4%	14.2%	17.6%	23.8%	23.8%	21.0%
Moderately Helpful	30.6%	44.5%	41.2%	33.3%	31.0%	36.8%
Slightly Helpful	18.6%	21.3%	24.2%	23.8%	26.2%	21.5%
Not Helpful	12.4%	16.1%	9.8%	9.5%	7.1%	12.1%
Number Responding	242	155	153	42	42	634
E. Improving Quality of Life (aside from financial benefits)						
Extremely Helpful	14.5%	9.7%	11.8%	16.7%	14.3%	12.8%
Very Helpful	38.0%	29.2%	32.0%	38.1%	26.2%	33.6%
Moderately Helpful	30.6%	38.3%	30.1%	28.6%	33.3%	32.4%
Slightly Helpful	9.9%	13.0%	17.6%	14.3%	21.4%	13.6%
Not Helpful	7.0%	9.7%	8.5%	2.4%	4.8%	7.6%
Number Responding	242	154	153	42	42	633
F. Developing Reasoning Skills						
Extremely Helpful	19.3%	11.6%	10.5%	19.0%	14.6%	15.0%
Very Helpful	45.3%	49.7%	46.1%	57.1%	36.6%	46.8%
Moderately Helpful	23.0%	31.0%	28.9%	21.4%	36.6%	27.2%
Slightly Helpful	11.1%	5.8%	13.8%	2.4%	9.8%	9.8%
Not Helpful	1.2%	1.9%	0.7%	0.0%	2.4%	1.3%
Number Responding	243	155	152	42	41	633

Southern Illinois University Edwardsville
Survey of 2001 Baccalaureate Graduates -- One Year Out
Survey Responses -- Part VI
Educational Effectiveness Questions

School Detail, con't.	CAS	Bus	Educ	Engr	Nursing	Total
G. Viewing Problems from Different Perspectives						
Extremely Helpful	28.8%	18.1%	19.0%	40.5%	19.0%	23.9%
Very Helpful	40.3%	47.1%	36.6%	40.5%	38.1%	40.9%
Moderately Helpful	22.2%	26.5%	31.4%	11.9%	28.6%	25.2%
Slightly Helpful	7.0%	7.1%	13.1%	7.1%	11.9%	8.8%
Not Helpful	1.6%	1.3%	0.0%	0.0%	2.4%	1.1%
Number Responding	243	155	153	42	42	635
H. Developing Ability to Solve Problems						
Extremely Helpful	18.9%	16.1%	15.0%	45.2%	14.3%	18.7%
Very Helpful	48.1%	43.9%	37.3%	38.1%	42.9%	43.5%
Moderately Helpful	24.3%	31.0%	35.9%	11.9%	31.0%	28.3%
Slightly Helpful	7.0%	7.7%	10.5%	4.8%	9.5%	8.0%
Not Helpful	1.6%	1.3%	1.3%	0.0%	2.4%	1.4%
Number Responding	243	155	153	42	42	635
I. Making Informed Decisions as a Citizen						
Extremely Helpful	17.7%	10.4%	9.2%	19.0%	16.7%	13.9%
Very Helpful	37.0%	39.6%	33.3%	33.3%	28.6%	36.0%
Moderately Helpful	29.6%	34.4%	35.9%	31.0%	33.3%	32.6%
Slightly Helpful	10.7%	12.3%	16.3%	11.9%	11.9%	12.6%
Not Helpful	4.9%	3.2%	5.2%	4.8%	9.5%	4.9%
Number Responding	243	154	153	42	42	634
J. Developing Writing Skills						
Extremely Helpful	25.3%	26.6%	19.1%	4.8%	14.6%	22.1%
Very Helpful	39.0%	39.0%	34.2%	31.0%	31.7%	36.8%
Moderately Helpful	24.5%	24.7%	28.9%	47.6%	36.6%	27.9%
Slightly Helpful	8.3%	5.8%	14.5%	11.9%	9.8%	9.5%
Not Helpful	2.9%	3.9%	3.3%	4.8%	7.3%	3.7%
Number Responding	241	154	152	42	41	630
K. Developing Oral Communication Skills						
Extremely Helpful	24.8%	30.7%	21.3%	9.5%	14.3%	23.7%
Very Helpful	38.4%	43.8%	32.7%	40.5%	47.6%	39.1%
Moderately Helpful	26.4%	19.0%	32.0%	33.3%	19.0%	25.9%
Slightly Helpful	7.9%	5.9%	11.3%	16.7%	14.3%	9.2%
Not Helpful	2.5%	0.7%	2.7%	0.0%	4.8%	2.1%
Number Responding	242	153	150	42	42	629
L. Developing Knowledge of Scientific and Technological Developments						
Extremely Helpful	16.9%	11.6%	10.5%	38.1%	16.7%	15.5%
Very Helpful	34.3%	32.3%	35.3%	40.5%	45.2%	35.2%
Moderately Helpful	30.6%	39.4%	32.0%	14.3%	21.4%	31.4%
Slightly Helpful	14.5%	13.5%	16.3%	7.1%	11.9%	14.0%
Not Helpful	3.7%	3.2%	5.9%	0.0%	4.8%	3.9%
Number Responding	242	155	153	42	42	634

Southern Illinois University Edwardsville
Survey of 2001 Baccalaureate Graduates -- One Year Out
Survey Responses -- Part VI
Educational Effectiveness Questions

School Detail, con't.	CAS	Bus	Educ	Engr	Nursing	Total
27. Undergraduate Education Broadened Interest Beyond Subjects in Major						
Strongly Agree	28.0%	13.0%	13.1%	14.3%	16.7%	19.1%
Agree	53.9%	53.9%	52.3%	45.2%	47.6%	52.5%
Neutral	13.6%	25.3%	28.1%	26.2%	23.8%	21.5%
Disagree	3.3%	4.5%	4.6%	11.9%	11.9%	5.0%
Strongly Disagree	1.2%	3.2%	2.0%	2.4%	0.0%	1.9%
Number Responding	243	154	153	42	42	634
28. Importance of College Education to:						
A. Personal Life						
Very Important	64.5%	56.5%	55.6%	57.1%	57.1%	59.4%
Moderately Important	23.6%	28.6%	29.4%	21.4%	28.6%	26.4%
Slightly Important	7.0%	9.1%	8.5%	16.7%	11.9%	8.8%
Not Important	5.0%	5.8%	6.5%	4.8%	2.4%	5.4%
Number Responding	242	154	153	42	42	633
B. Community Life						
Very Important	36.4%	20.1%	32.9%	19.0%	26.2%	29.7%
Moderately Important	33.5%	38.3%	37.5%	38.1%	40.5%	36.4%
Slightly Important	20.7%	26.0%	21.1%	28.6%	26.2%	22.9%
Not Important	9.5%	15.6%	8.6%	14.3%	7.1%	10.9%
Number Responding	242	154	152	42	42	632
C. Professional Life						
Very Important	65.6%	56.9%	76.5%	81.0%	73.8%	67.7%
Moderately Important	21.2%	26.8%	19.0%	16.7%	21.4%	21.7%
Slightly Important	9.1%	9.8%	3.3%	2.4%	2.4%	7.0%
Not Important	4.1%	6.5%	1.3%	0.0%	2.4%	3.6%
Number Responding	241	153	153	42	42	631
29. Quality of SIUE Education Relative to That of Friends at Other Schools						
Among the Best	10.4%	4.6%	7.9%	19.0%	12.2%	9.1%
Above Average	36.9%	35.3%	35.5%	35.7%	26.8%	35.5%
Average	46.1%	51.0%	52.0%	40.5%	51.2%	48.6%
Below Average	5.0%	7.8%	4.6%	4.8%	9.8%	5.9%
Among the Worst	1.7%	1.3%	0.0%	0.0%	0.0%	1.0%
Number Responding	241	153	152	42	41	629
30. Involvement Since Bachelor's Degree with:						
A. Organized, Formal, Career Related Learning (non-degree)						
Currently Involved	26.6%	30.5%	39.3%	22.0%	43.9%	31.4%
Have Been Involved	36.1%	38.3%	31.3%	43.9%	31.7%	35.7%
Never Involved	37.3%	31.2%	29.3%	34.1%	24.4%	32.9%
Number Responding	241	154	150	41	41	627
B. Personal Enrichment Studies						
Currently Involved	27.0%	17.0%	17.9%	12.2%	35.7%	22.0%
Have Been Involved	31.5%	33.3%	37.1%	34.1%	26.2%	33.1%
Never Involved	41.5%	49.7%	45.0%	53.7%	38.1%	44.9%
Number Responding	241	153	151	41	42	628

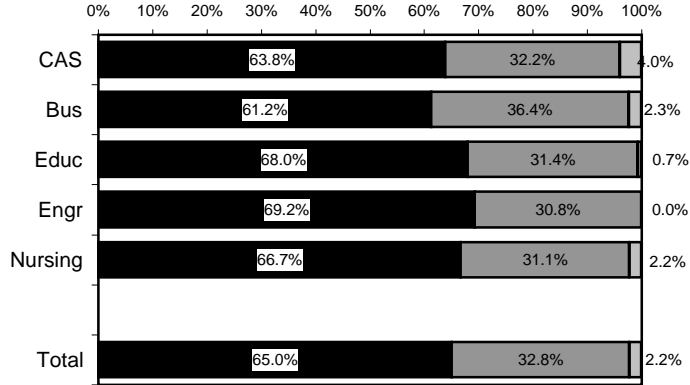
Southern Illinois University Edwardsville
Survey of 2001 Baccalaureate Graduates -- One Year Out
Survey Responses -- Part VI
Educational Effectiveness Questions

School Detail, con't.	CAS	Bus	Educ	Engr	Nursing	Total
C. Professional Activities or Organizations						
Currently Involved	34.3%	20.8%	39.9%	33.3%	35.0%	32.3%
Have Been Involved	28.9%	32.5%	34.0%	40.5%	27.5%	31.7%
Never Involved	36.8%	46.8%	26.1%	26.2%	37.5%	36.0%
Number Responding	242	154	153	42	40	631
D. Volunteer Work / Community Svc Activities or Organizations						
Currently Involved	32.2%	13.0%	21.6%	9.8%	21.4%	22.8%
Have Been Involved	30.2%	36.4%	40.5%	26.8%	45.2%	35.0%
Never Involved	37.6%	50.6%	37.9%	63.4%	33.3%	42.2%
Number Responding	242	154	153	41	42	632
E. Social / Recreational Activities or Organizations						
Currently Involved	36.6%	27.9%	27.6%	17.1%	33.3%	30.9%
Have Been Involved	35.8%	35.7%	38.8%	39.0%	42.9%	37.2%
Never Involved	27.6%	36.4%	33.6%	43.9%	23.8%	32.0%
Number Responding	243	154	152	41	42	632
F. Political Activities or Organizations						
Currently Involved	11.2%	5.3%	7.8%	12.2%	9.5%	8.9%
Have Been Involved	21.1%	14.6%	12.4%	14.6%	19.0%	16.9%
Never Involved	67.8%	80.1%	79.7%	73.2%	71.4%	74.2%
Number Responding	242	151	153	41	42	629
G. Religious / Ethical Activities or Organizations						
Currently Involved	32.6%	26.6%	33.3%	19.5%	11.9%	29.1%
Have Been Involved	26.0%	29.9%	37.3%	31.7%	38.1%	30.9%
Never Involved	41.3%	43.5%	29.4%	48.8%	50.0%	40.0%
Number Responding	242	154	153	41	42	632
H. Support or Participation in the Arts (music, drama, dance, art)						
Currently Involved	29.3%	5.8%	12.5%	19.5%	14.3%	17.9%
Have Been Involved	28.9%	29.9%	32.2%	12.2%	31.0%	29.0%
Never Involved	41.7%	64.3%	55.3%	68.3%	54.8%	53.1%
Number Responding	242	154	152	41	42	631
I. Reading books not directly related to your job						
Currently Involved	68.7%	45.5%	58.8%	50.0%	54.8%	58.5%
Have Been Involved	22.6%	34.4%	32.0%	33.3%	33.3%	29.2%
Never Involved	8.6%	20.1%	9.2%	16.7%	11.9%	12.3%
Number Responding	243	154	153	42	42	634

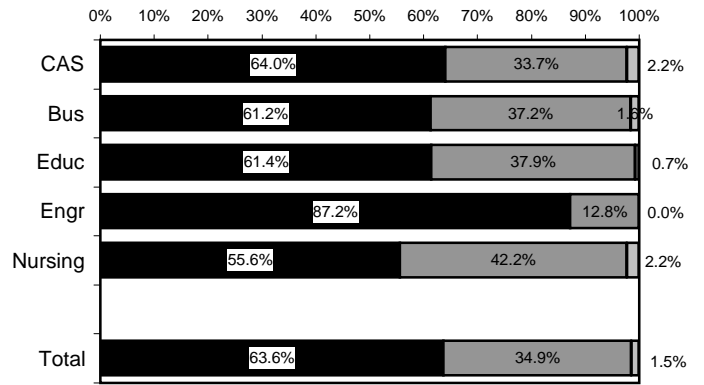
Helpfulness of University Experiences in:

Very to Extremely Helpful
 Slightly to Moderately Helpful
 Not Helpful

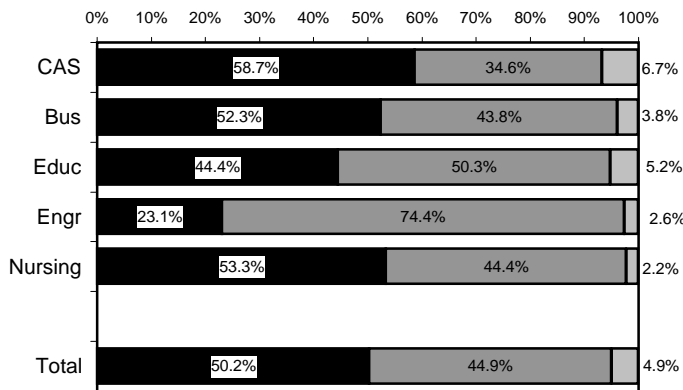
Viewing Problems from Different Perspectives



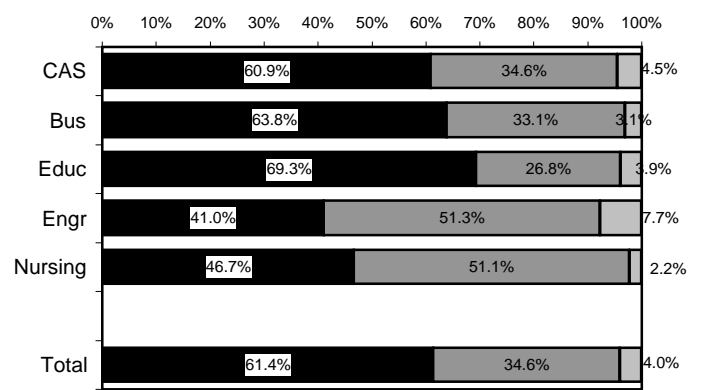
Developing Ability to Solve Problems



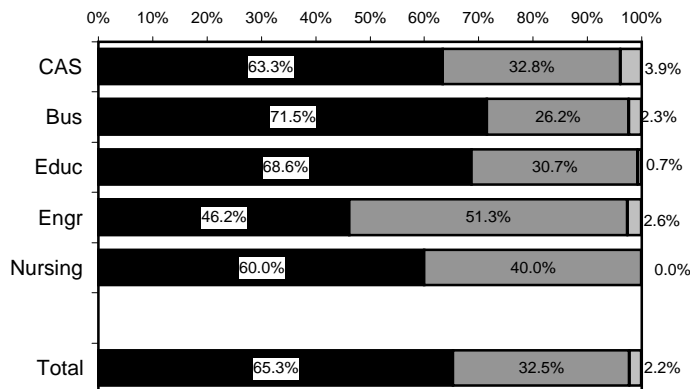
Making Informed Decisions as a Citizen



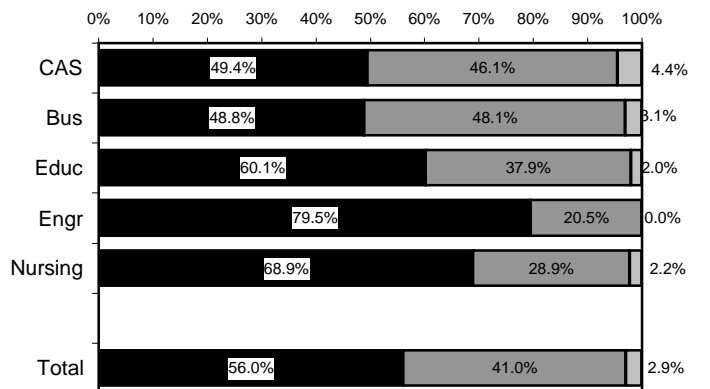
Developing Writing Skills



Developing Oral Communication Skills



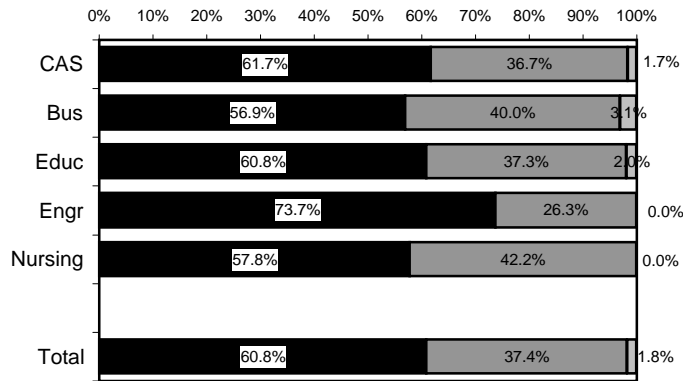
Developing Knowledge of Scientific and Technological Developments



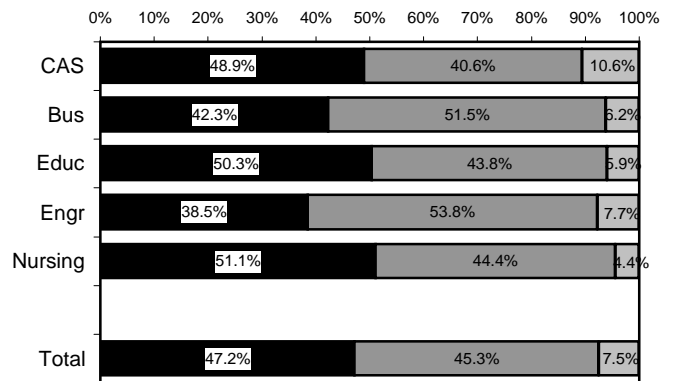
Helpfulness of University Experiences in:

Very to Extremely Helpful
 Slightly to Moderately Helpful
 Not Helpful

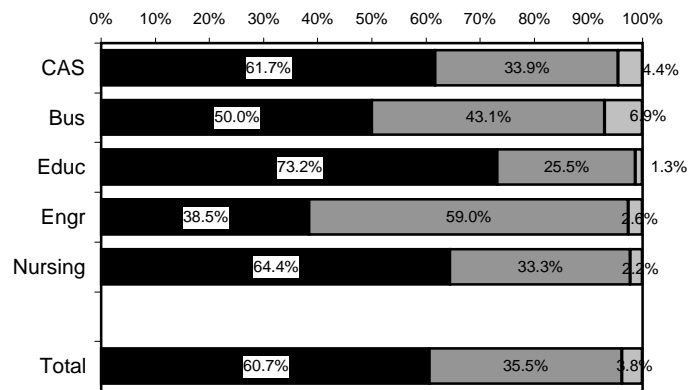
Developing Critical Thinking Ability



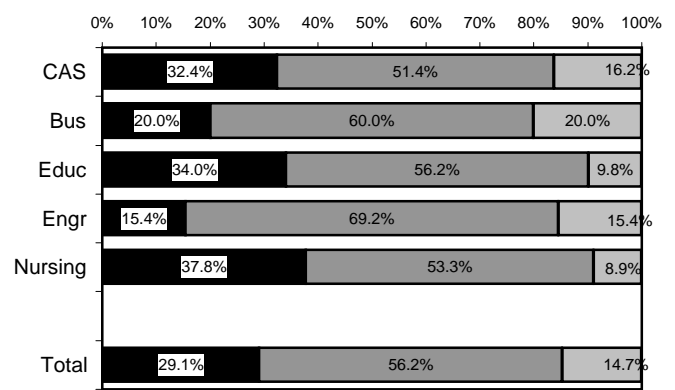
Developing Sense of Ethics



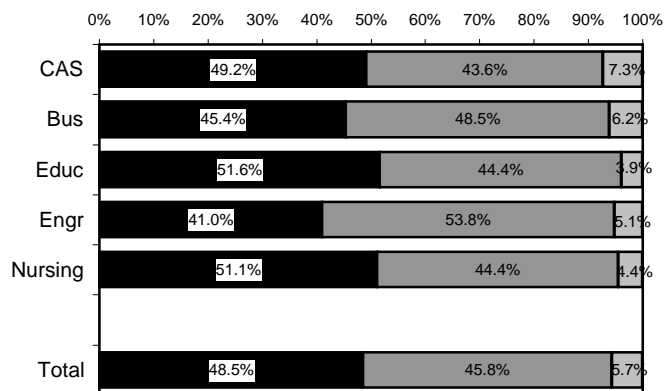
Understanding People with Different Backgrounds



Becoming a More Active Citizen



Improving Quality of Life (aside from financial benefits)



Developing Reasoning Skills

