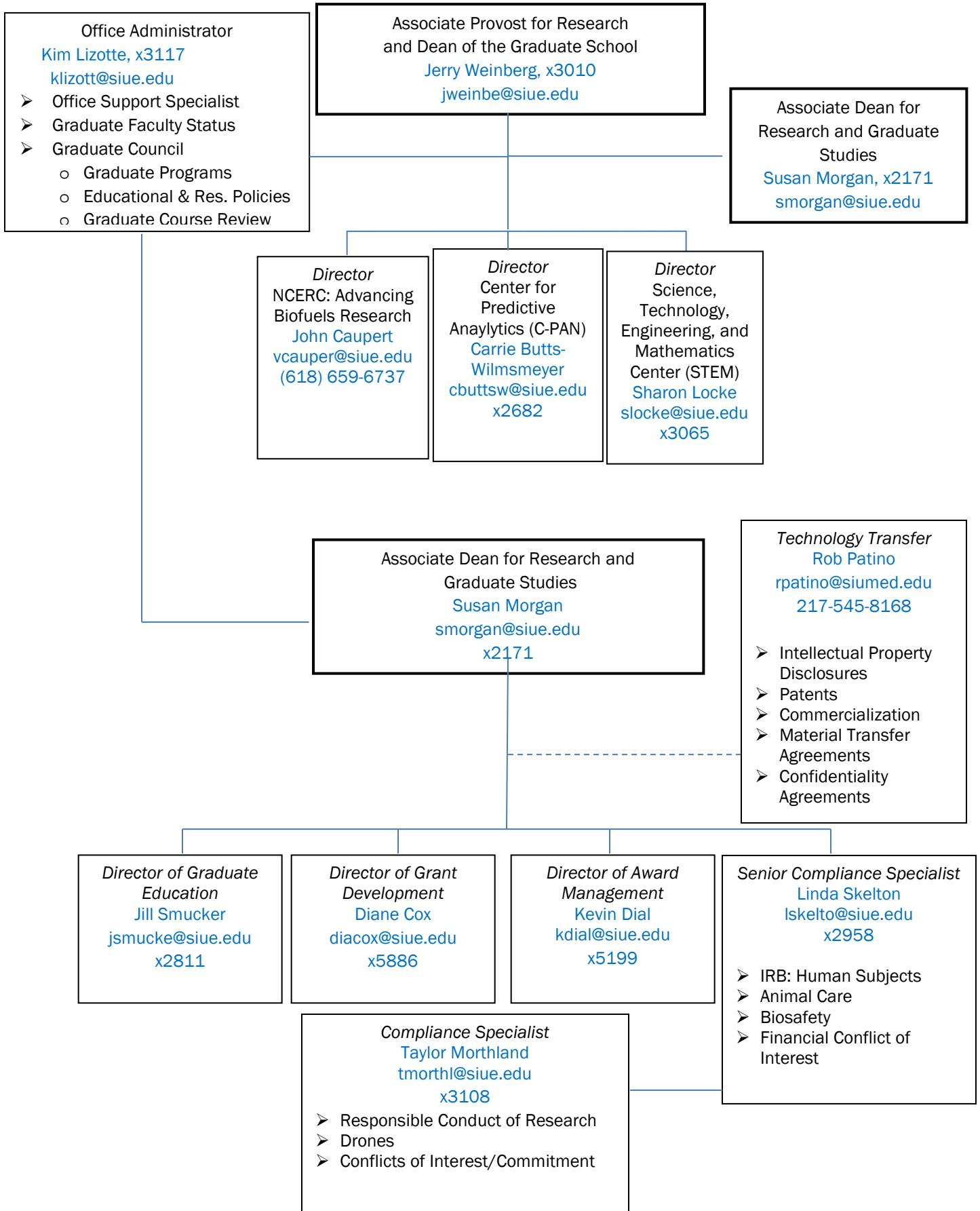


**Graduate School Organizational Chart**  
**Updated April 2020**



*Director of Award Management*  
Kevin Dial  
kdial@siue.edu  
x5199

- Guideline Interpretation
- Special Reporting & Other Requests
- External Audits
- Financial Compliance

*Grants and Contracts Associate*  
Tammy Smart  
thornbe@siue.edu  
x3171

- Grant and Contract Award Processing

*Accountant II*  
Pamela Sykes  
psykes@siue.edu  
x3693

- External Grant Financial Management
- Graduate School Accountant
- Indirect Cost Recovery

*Accountant III*  
Gail Munneke  
gmunnek@siue.edu  
x3162

- External Grant Financial Management

*Accountant II*  
Rhonda Stone  
rhstone@siue.edu  
x3008

- External Grant Financial Management
- External Audit

*Grants and Contracts Associate*  
Donnell Smith  
donnsmi@siue.edu  
x3171

- External Grant Financial Management

*Director of Grant Development*  
**Diane Cox**  
[diacox@siue.edu](mailto:diacox@siue.edu)  
x5886

- External Proposals for Large, Multidisciplinary Projects
- Internal Funding Programs
  - New Faculty Incentive Program
  - SURCI
  - CARI
  - Travel and Publications
  - Editing
- Research Initiatives

*Pre-Award Specialist*  
**Joe Prange**  
[jprange@siue.edu](mailto:jprange@siue.edu)  
X5887

- External Grants: Proposals, Budgets and Application Preparation
- Faculty/Department Training
- Internal Funding Programs
  - Paul Simon
  - CCA
  - Distinguished Professor Award
  - CARI
  - NFIP Promotion
- ESTL Liasion

*Pre-Award Specialist*  
**Nick Gianoulakis**  
[njohnso@siue.edu](mailto:njohnso@siue.edu)  
x5618

- External Grants: Proposals, Budgets, Application Preparation
- Faculty/Department Training
- Internal Funding Programs
  - Hoppe
  - Vaughnie Lindsay
  - Special Competitions (i.e. RET, Assigned Researcher Time)
  - CARI
  - NFIP Promotion
- Reports on External & Internal Proposals/ Funding/Submissions

*Pre-Award Specialist*  
**Jill Laughlin**  
[jilaugh@siue.edu](mailto:jilaugh@siue.edu)  
X3114

- External Grants: Proposals, Budgets and Application Preparation
- Faculty/Department Training
- Internal Funding Programs
  - STEP/Baich
  - VRI
  - Limited Submissions
  - NFIP Promotion
- Reports on External & Internal Proposals & Funding

*Director of Graduate Education*

**Jill Smucker**

[jsmucke@siue.edu](mailto:jsmucke@siue.edu)

x2811

- Requests for Exceptions
- Integrative Studies/Healthcare Informatics Liaison
- Program Reviews
- Graduate Catalog

*Chief Clerk*

[@siue.edu](mailto:@siue.edu)

x3010

- Graduate Assistant Contracts (Backup)
- Graduate Assistant Tuition Waivers (Backup)
- Theses Review
- Theses Workshops
- Internal Graduate Student Funding Programs
  - Competitive Graduate Award & Tuition Waivers
  - Travel Support
  - OTA/OTAA/RGGS/RGRDS/GSA
- Graduate Student Website
- Graduate School Events
  - Graduate School Symposium
  - Graduate Student Awards Reception

*Staff Clerk*

**Christina McGuiggan**

[cmcguig@siue.edu](mailto:cmcguig@siue.edu)

x3010

- Graduate Assistant Contracts
- Graduate Assistant Tuition Waivers
- Graduate Assistant Orientations
- Theses Review
- Graduate Student Website
- Graduate Committee on Assessment
- Graduate Assistant Orientation