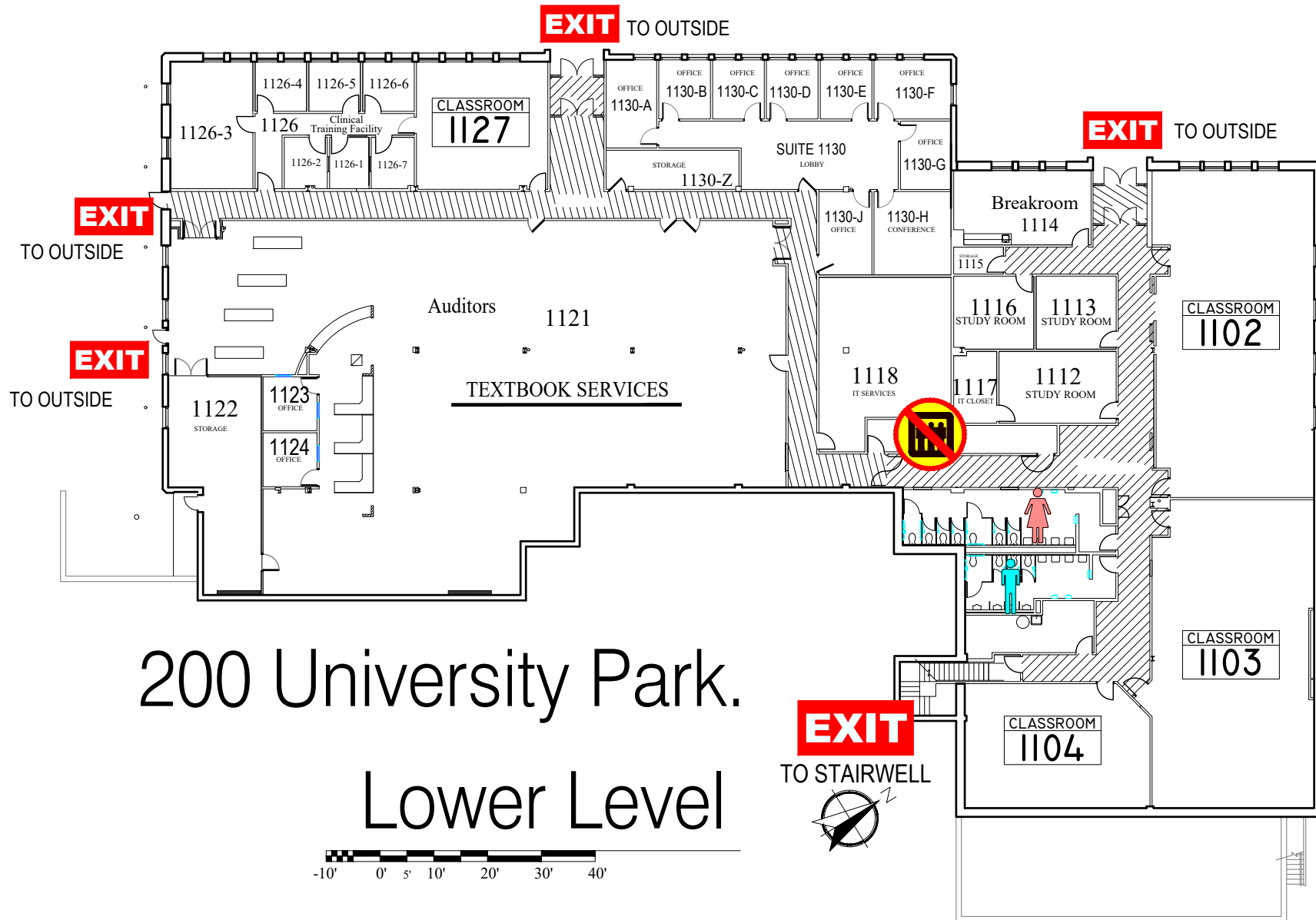


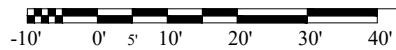
EMERGENCY EXIT PLAN

EXIT IN CASE OF EMERGENCY USE MARKED EXITS **EXIT**

 **DO NOT USE ELEVATORS** 



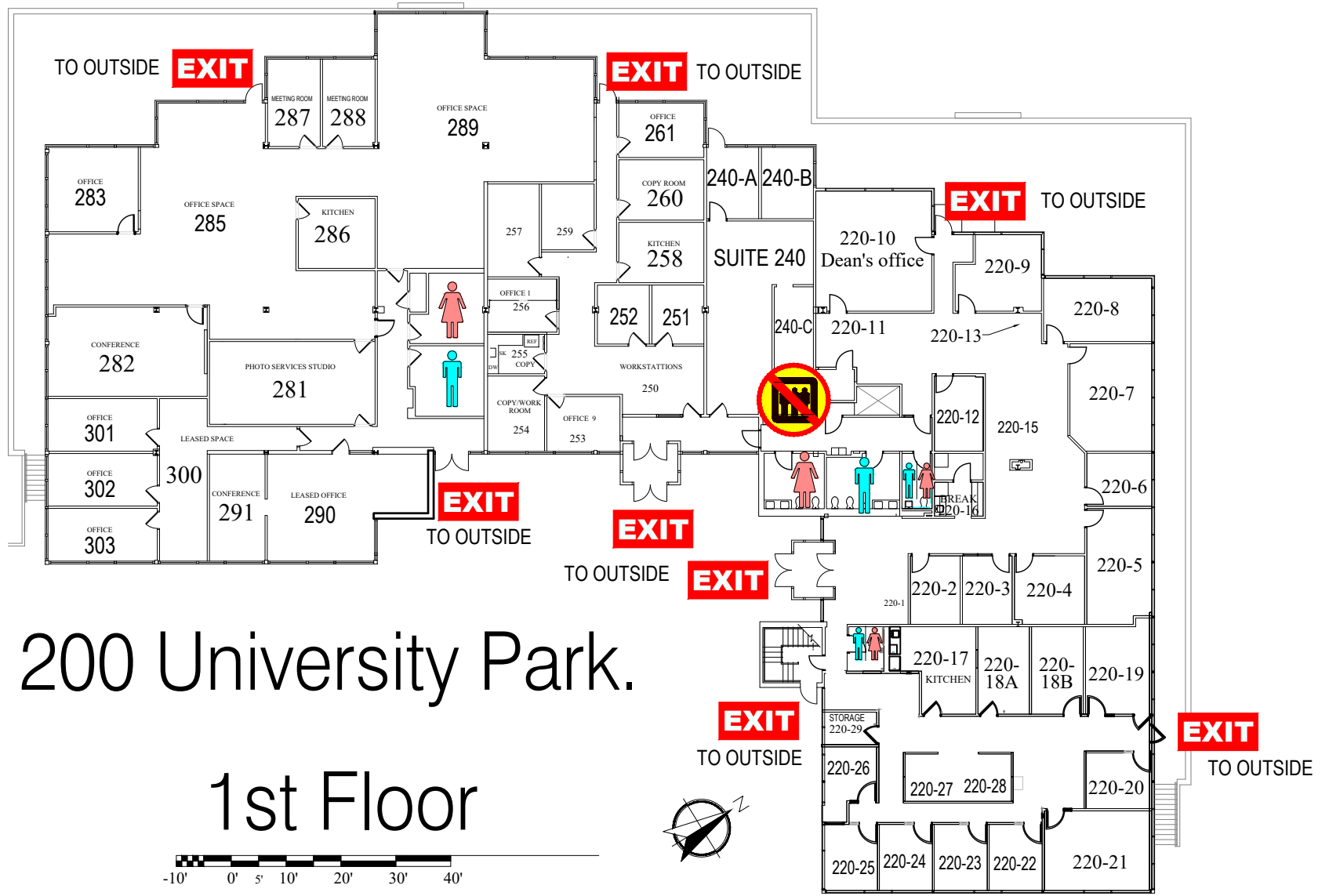
200 University Park.
Lower Level



EMERGENCY EXIT PLAN

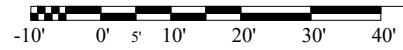
EXIT IN CASE OF EMERGENCY USE MARKED EXITS **EXIT**

 **DO NOT USE ELEVATORS** 



200 University Park.

1st Floor

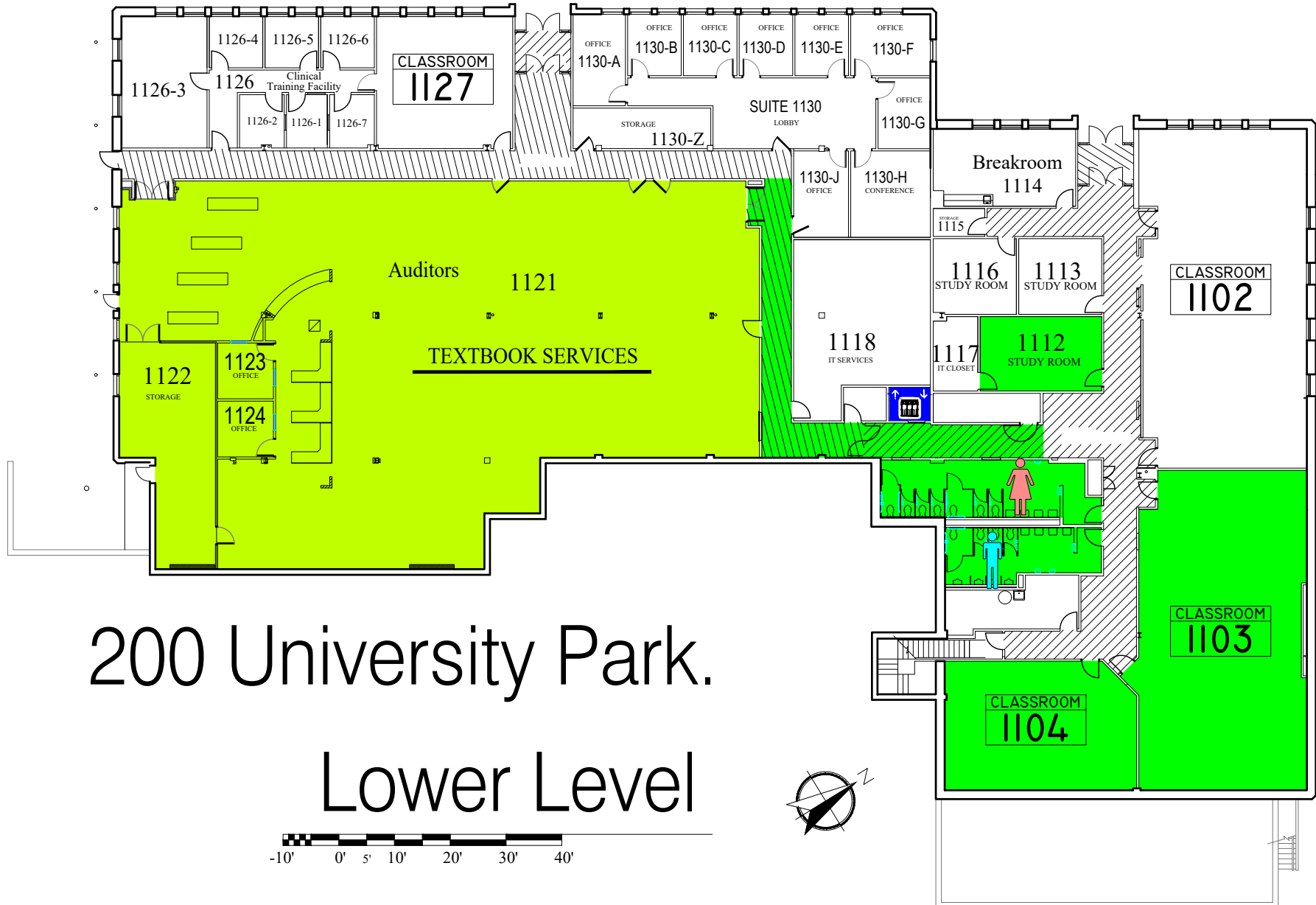


EMERGENCY STORM SHELTERS

In event of a Tornado Warning everyone should go to a Lower Level **PRIMARY SHELTER**

In event you can not get to a Primary Shelter go to a **SECONDARY STORM SHELTER**

located on 2nd floor

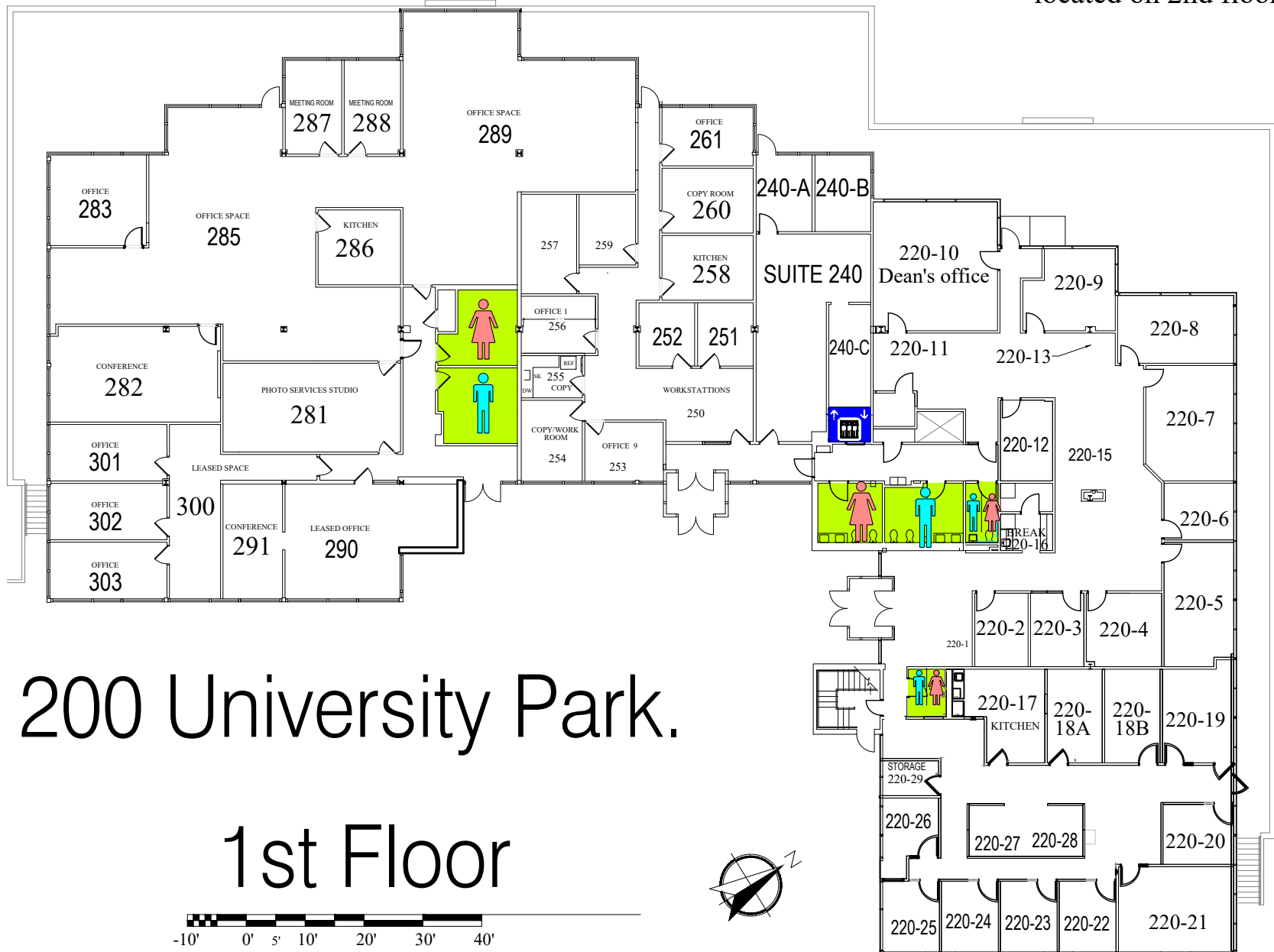


EMERGENCY STORM SHELTERS

In event of a Tornado Warning everyone should go to a Lower Level **PRIMARY SHELTER**

In event you can not get to a Primary Shelter go to a **SECONDARY STORM SHELTER**

located on 2nd floor



200 University Park.

1st Floor