

Science Lab Building West

Send Comments on Floor Plan to:
donande@siue.edu



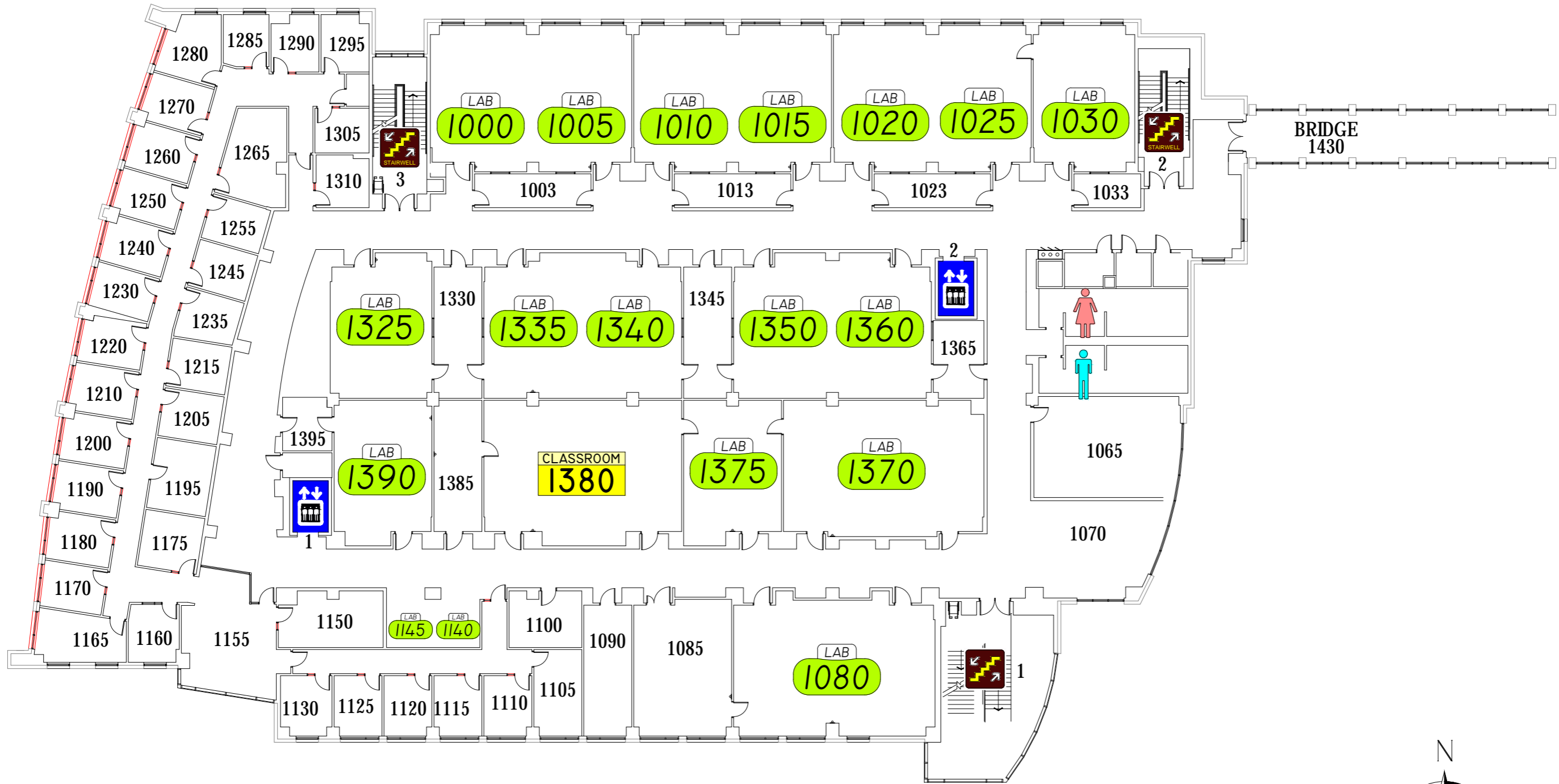
LOWER LEVEL

0' 5' 10' 20' 30' 40' 50'-0"

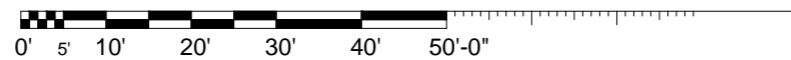


Science Lab Building West

Send Comments on Floor Plan to:
donande@siue.edu



1st FLOOR

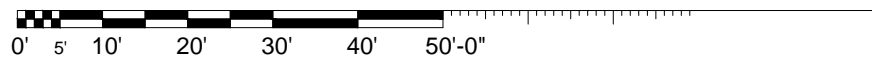
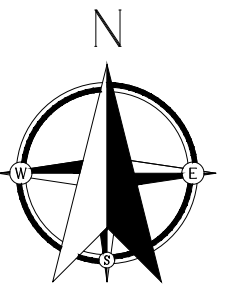


Science Lab Building West

Send Comments on Floor Plan to:
donande@siue.edu

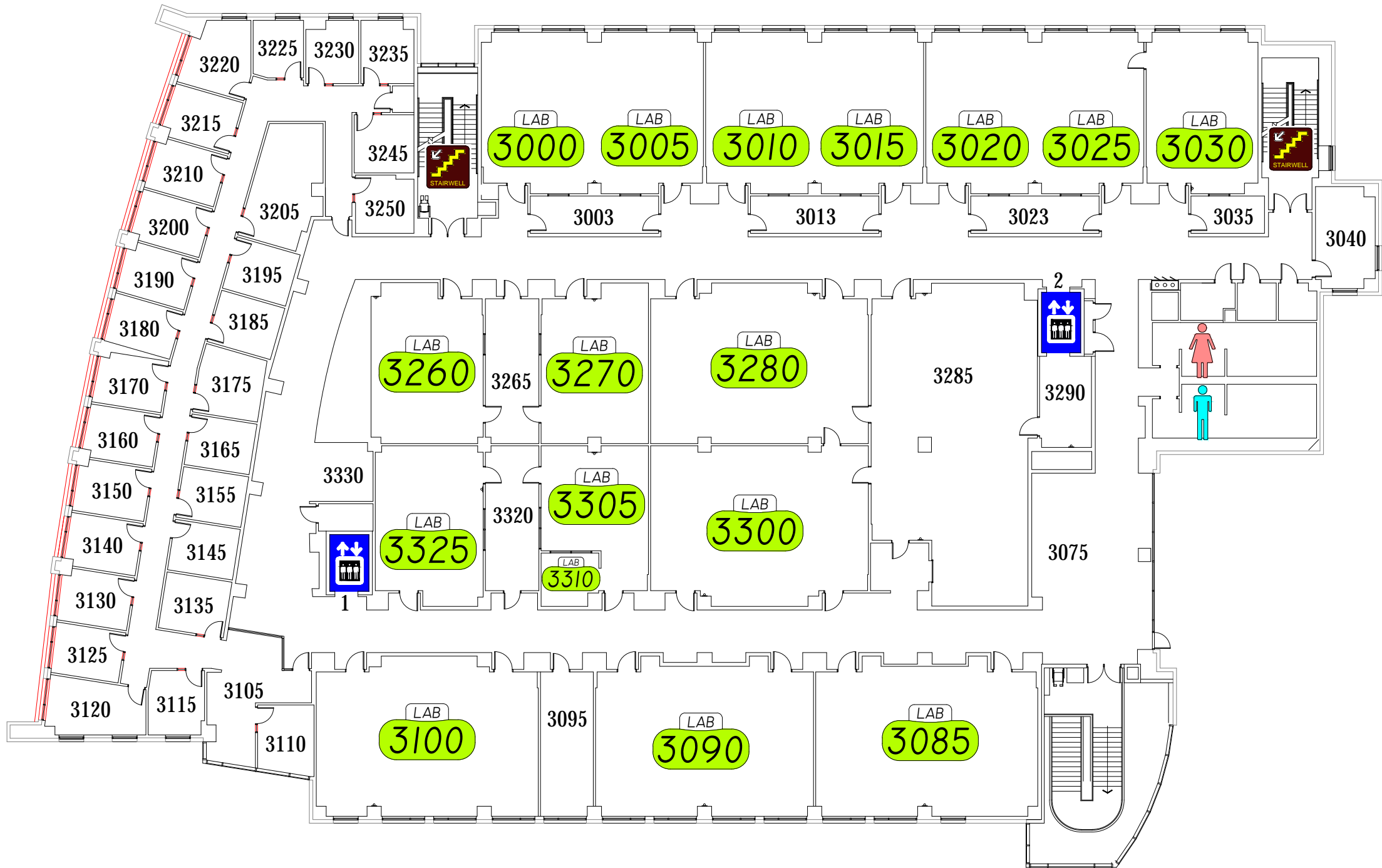


2nd FLOOR



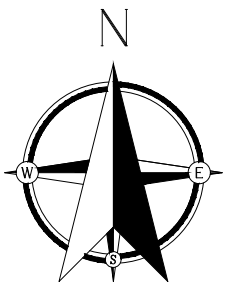
Science Lab Building West

Send Comments on Floor Plan to:
donande@siue.edu



3rd FLOOR

0' 5' 10' 20' 30' 40' 50'-0"



EMERGENCY STORM SHELTERS

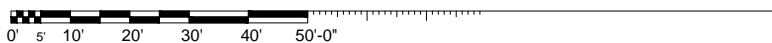
In event of a Tornado Warning everyone should go to a Lower Level **Primary Storm Shelter**

In event you can not get to a Primary Shelter go to a **Secondary Storm Shelter**



LOWER LEVEL

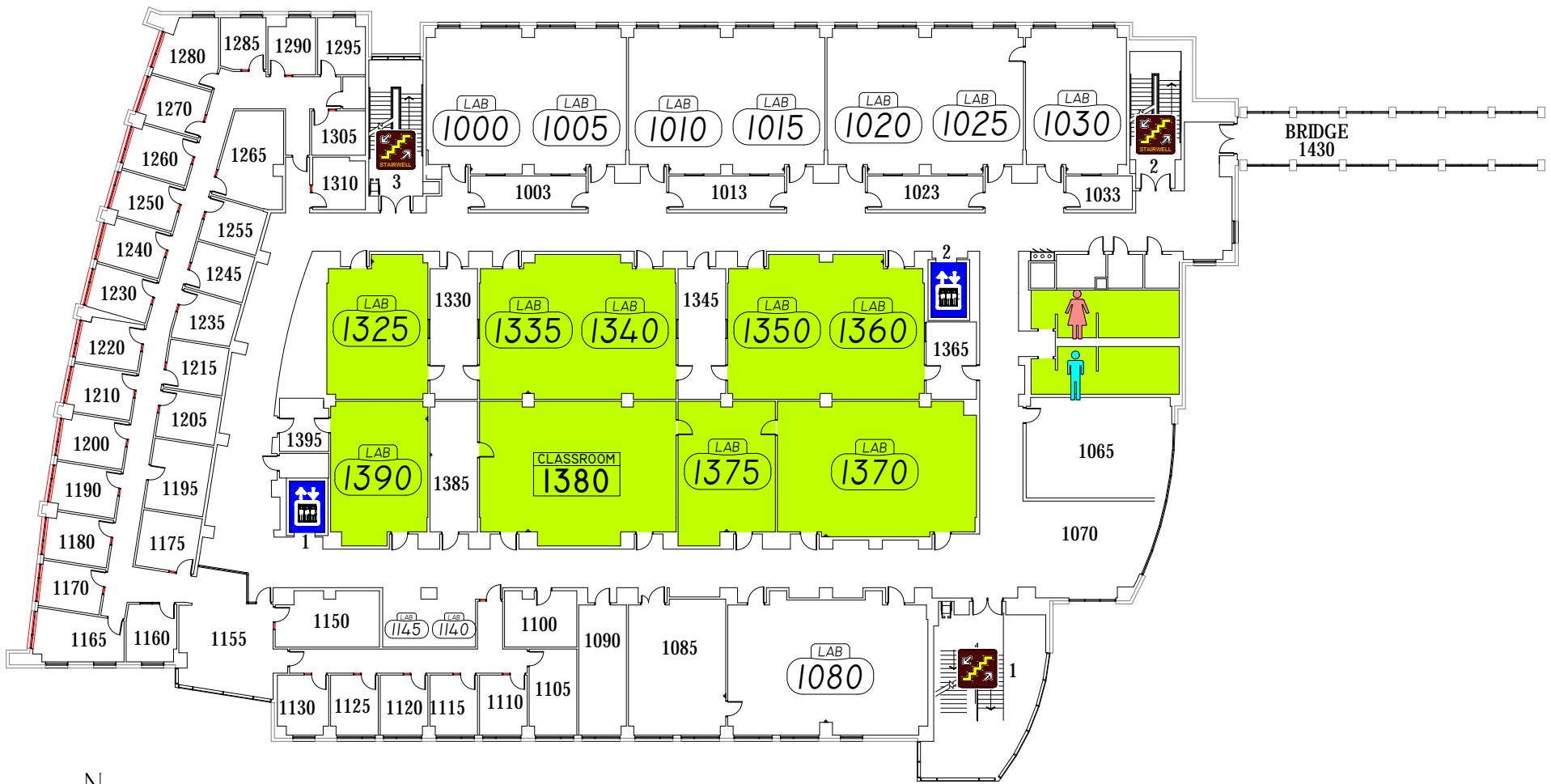
Science Lab Building West



EMERGENCY STORM SHELTERS

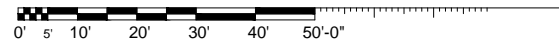
In event of a Tornado Warning everyone should go to a Lower Level **Primary Storm Shelter**

In event you can not get to a Primary Shelter go to a **Secondary Storm Shelter**



1st FLOOR

Science Lab Building West



EMERGENCY STORM SHELTERS

In event of a Tornado Warning everyone should go to a Lower Level **Primary Storm Shelter**

In event you can not get to a Primary Shelter go to a **Secondary Storm Shelter**



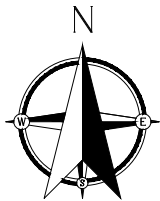
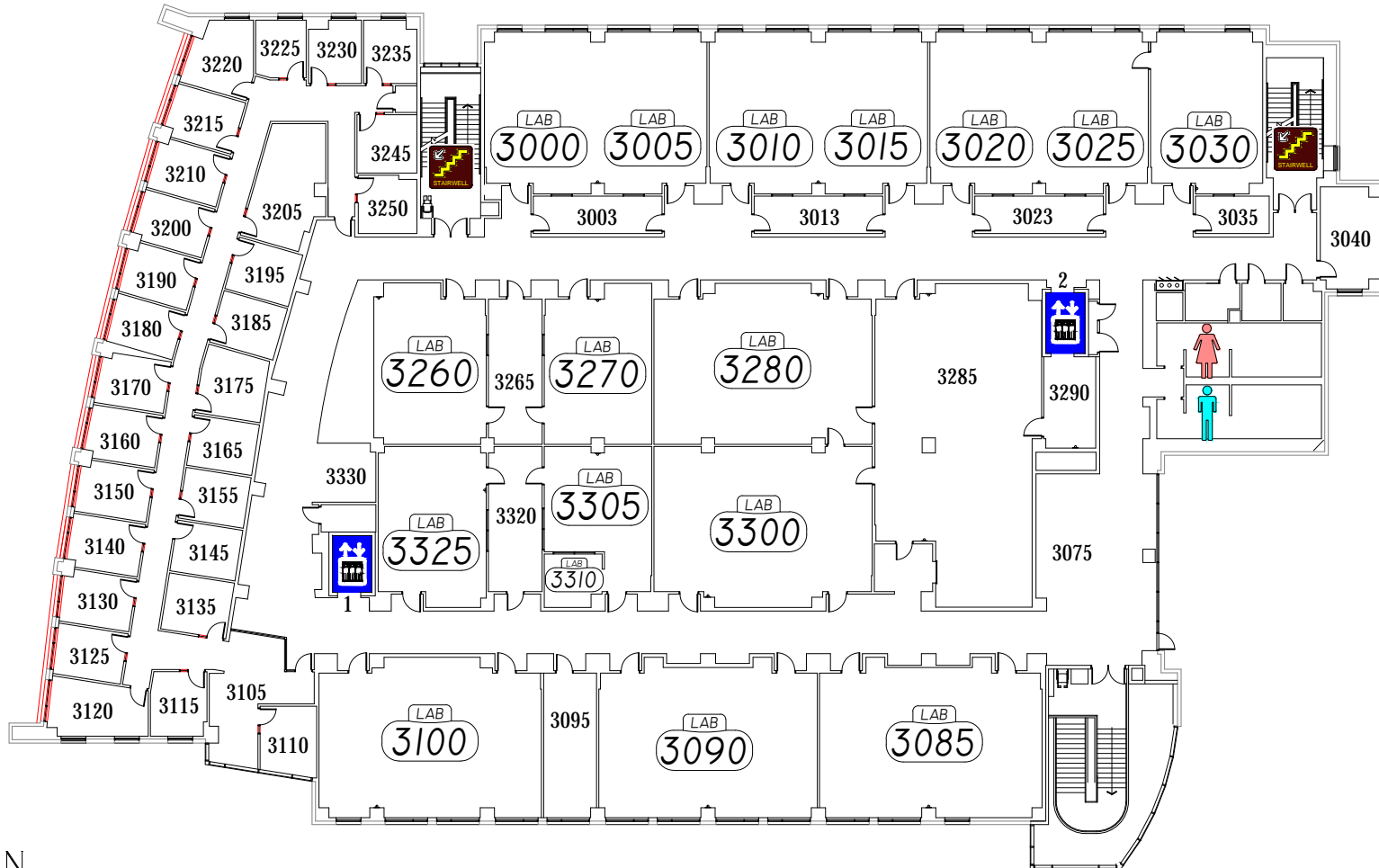
2nd FLOOR Science Lab Building West

0' 5' 10' 20' 30' 40' 50'-0"

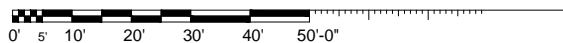
EMERGENCY STORM SHELTERS

In event of a Tornado Warning everyone should go to a Lower Level **Primary Storm Shelter**

In event you can not get to a Primary Shelter go to a **Secondary Storm Shelter**



3rd FLOOR Science Lab Building West

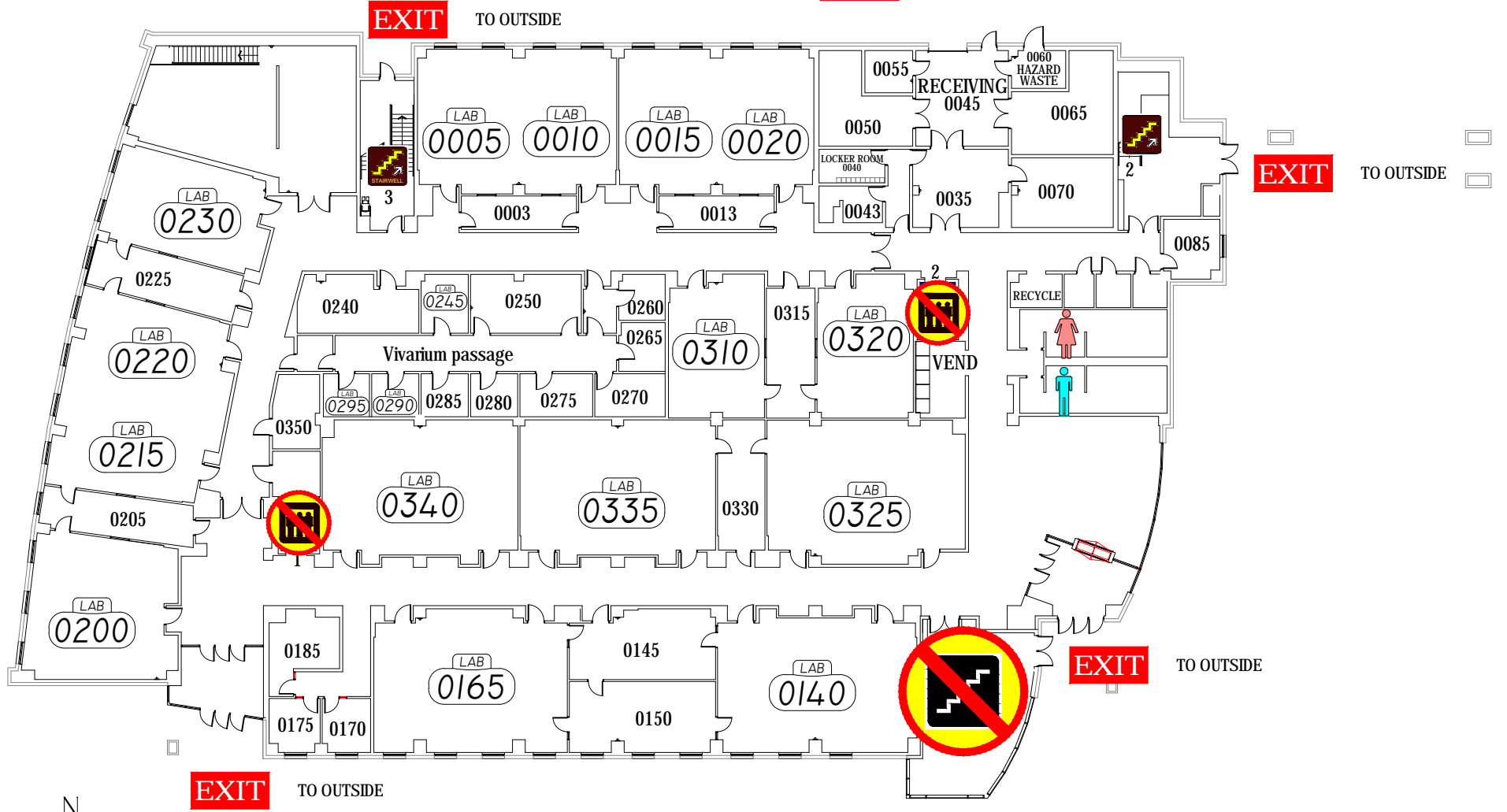


EMERGENCY EXIT PLAN

EXIT IN CASE OF EMERGENCY USE MARKED EXITS **EXIT**

 DO NOT USE OPEN STAIRS OR ELEVATORS 

 WHEELCHAIR USERS ARE TO GO INTO THE STAIR WELLS **EXIT** AND WAIT FOR EMERGENCY PERSONNEL. 



LOWER LEVEL

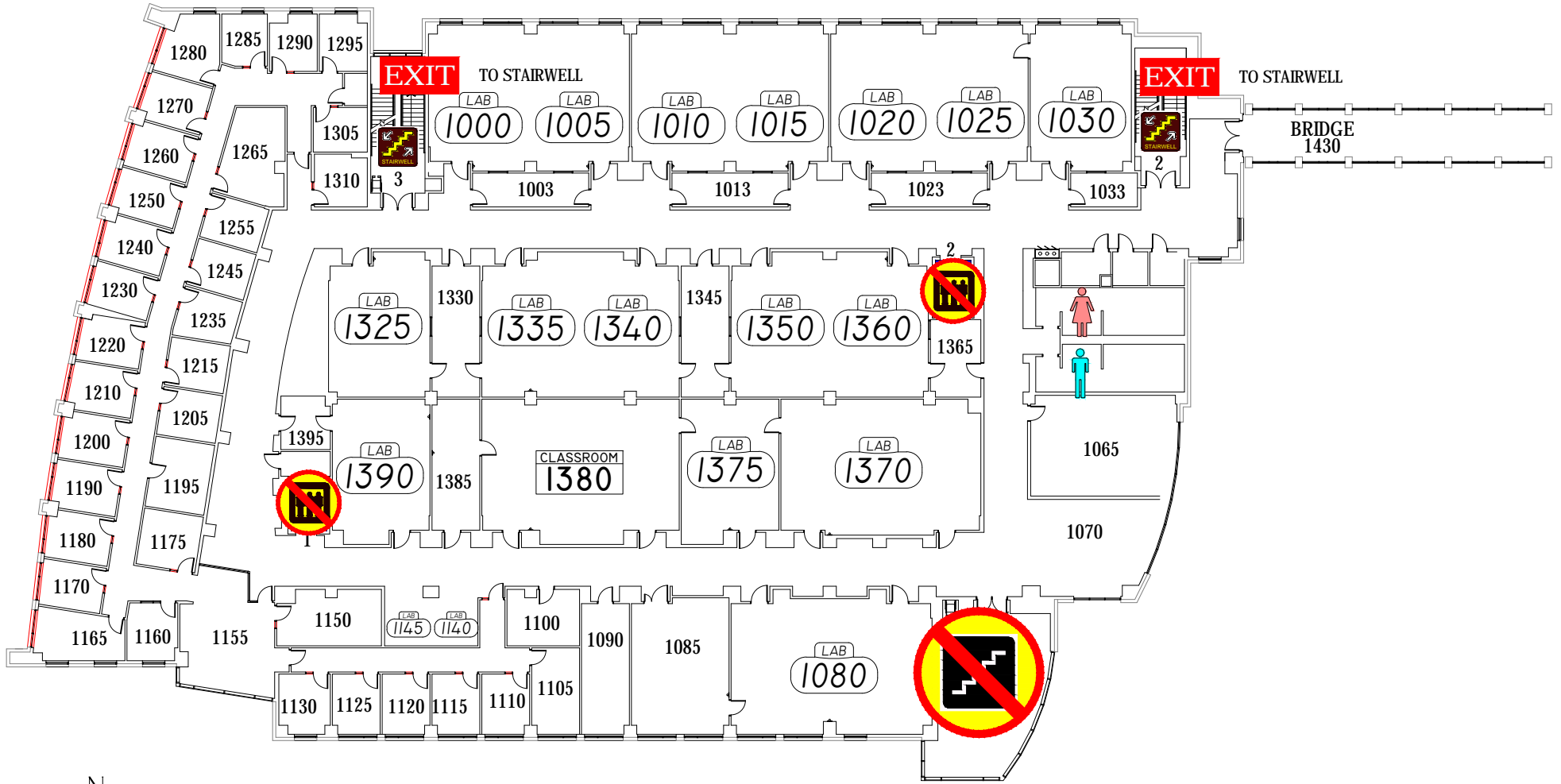
0' 5' 10' 20' 30' 40' 50'-0"

EMERGENCY EXIT PLAN

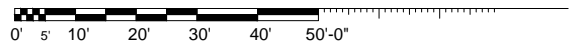
EXIT IN CASE OF EMERGENCY USE MARKED EXITS **EXIT**

 DO NOT USE OPEN STAIRS OR ELEVATORS 

 WHEELCHAIR USERS ARE TO GO INTO THE STAIR WELLS **EXIT** AND WAIT FOR EMERGENCY PERSONNEL. 



1st FLOOR

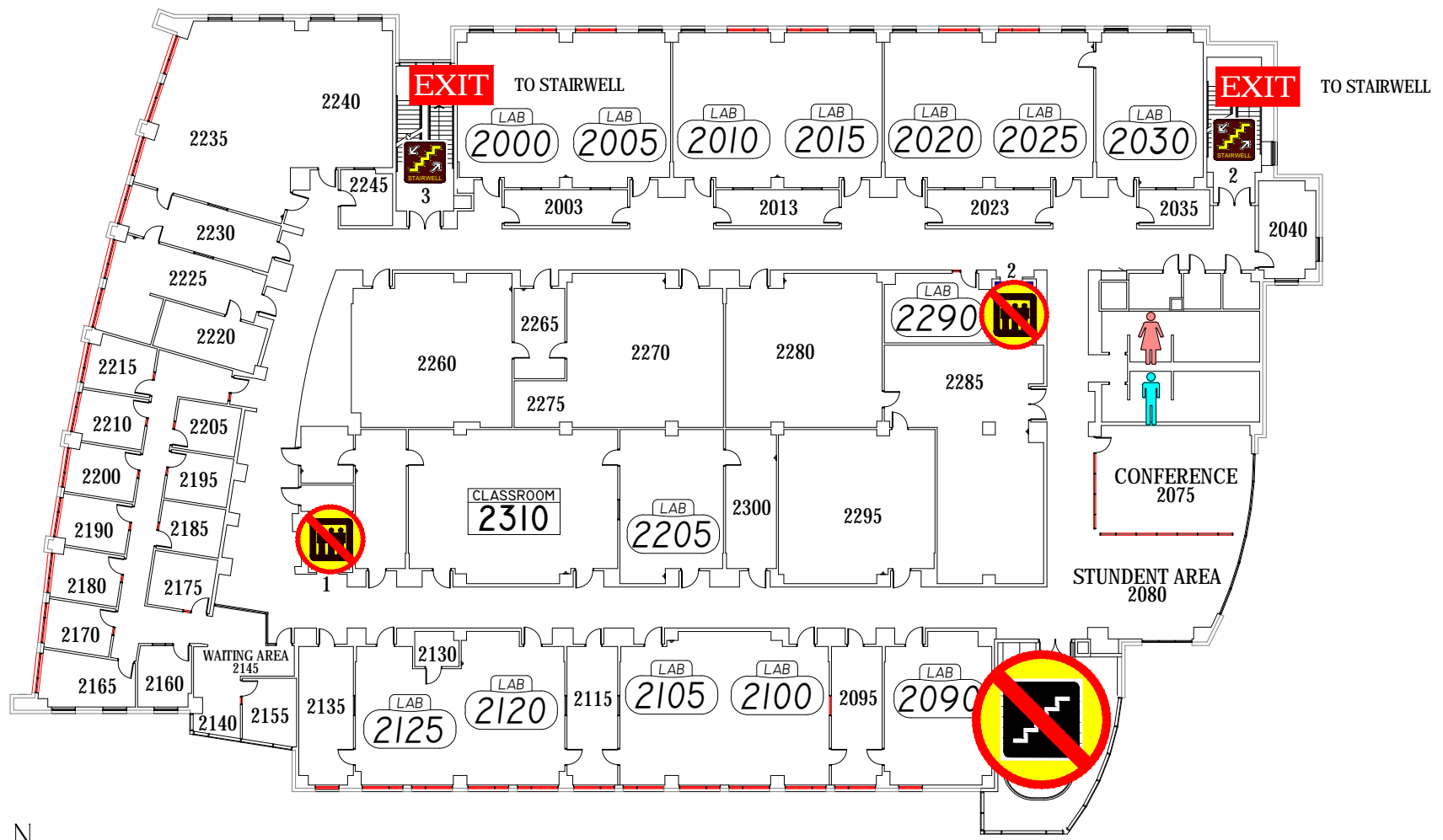


EMERGENCY EXIT PLAN

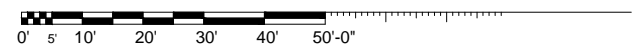
EXIT IN CASE OF EMERGENCY USE MARKED EXITS **EXIT**

 DO NOT USE OPEN STAIRS OR ELEVATORS 

 WHEELCHAIR USERS ARE TO GO INTO THE STAIR WELLS **EXIT** AND WAIT FOR EMERGENCY PERSONNEL. 



2nd FLOOR

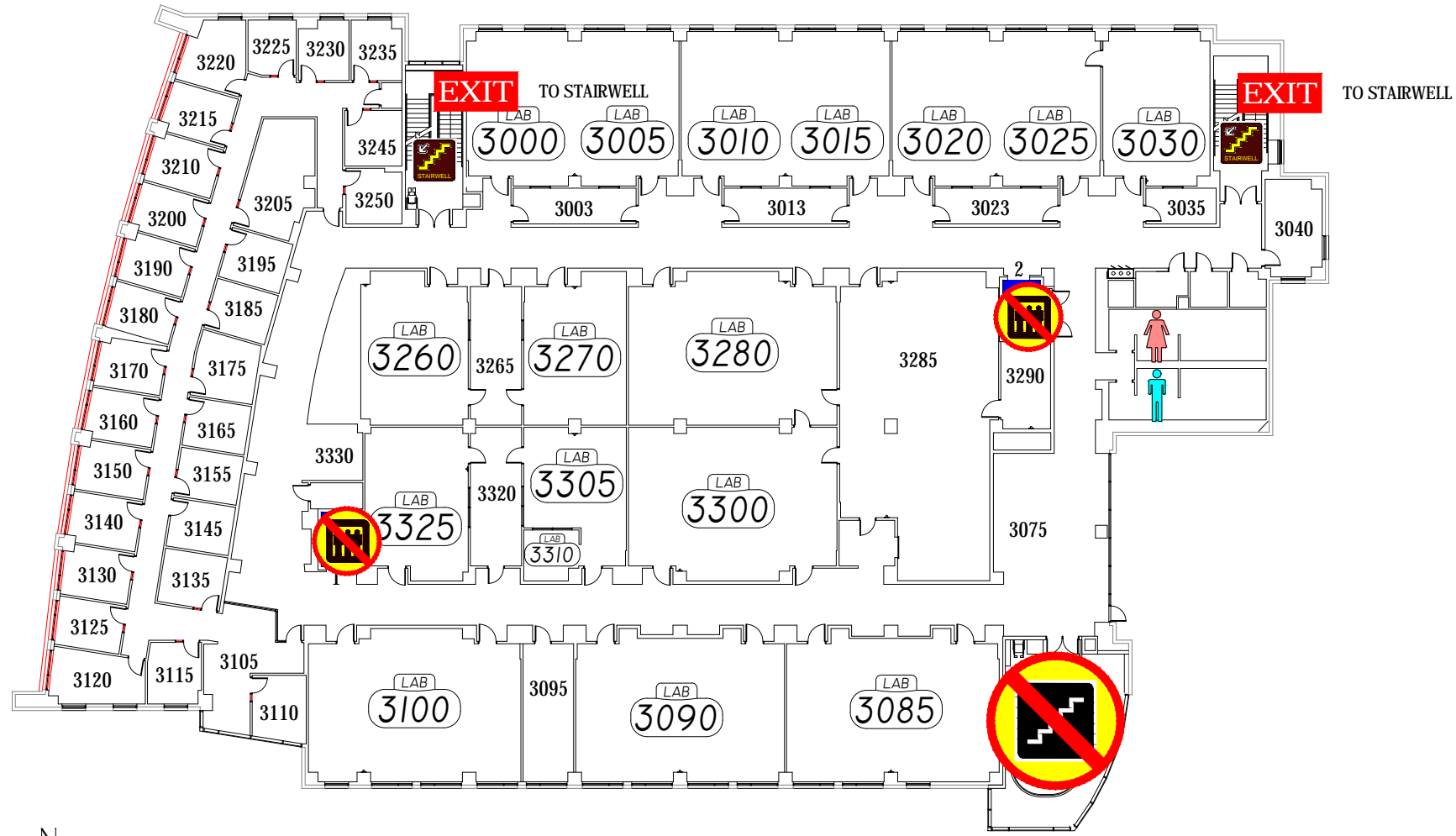


EMERGENCY EXIT PLAN

EXIT IN CASE OF EMERGENCY USE MARKED EXITS **EXIT**

 DO NOT USE OPEN STAIRS OR ELEVATORS 

 WHEELCHAIR USERS ARE TO GO INTO THE STAIR WELLS **EXIT** AND WAIT FOR EMERGENCY PERSONNEL. 



3rd FLOOR

