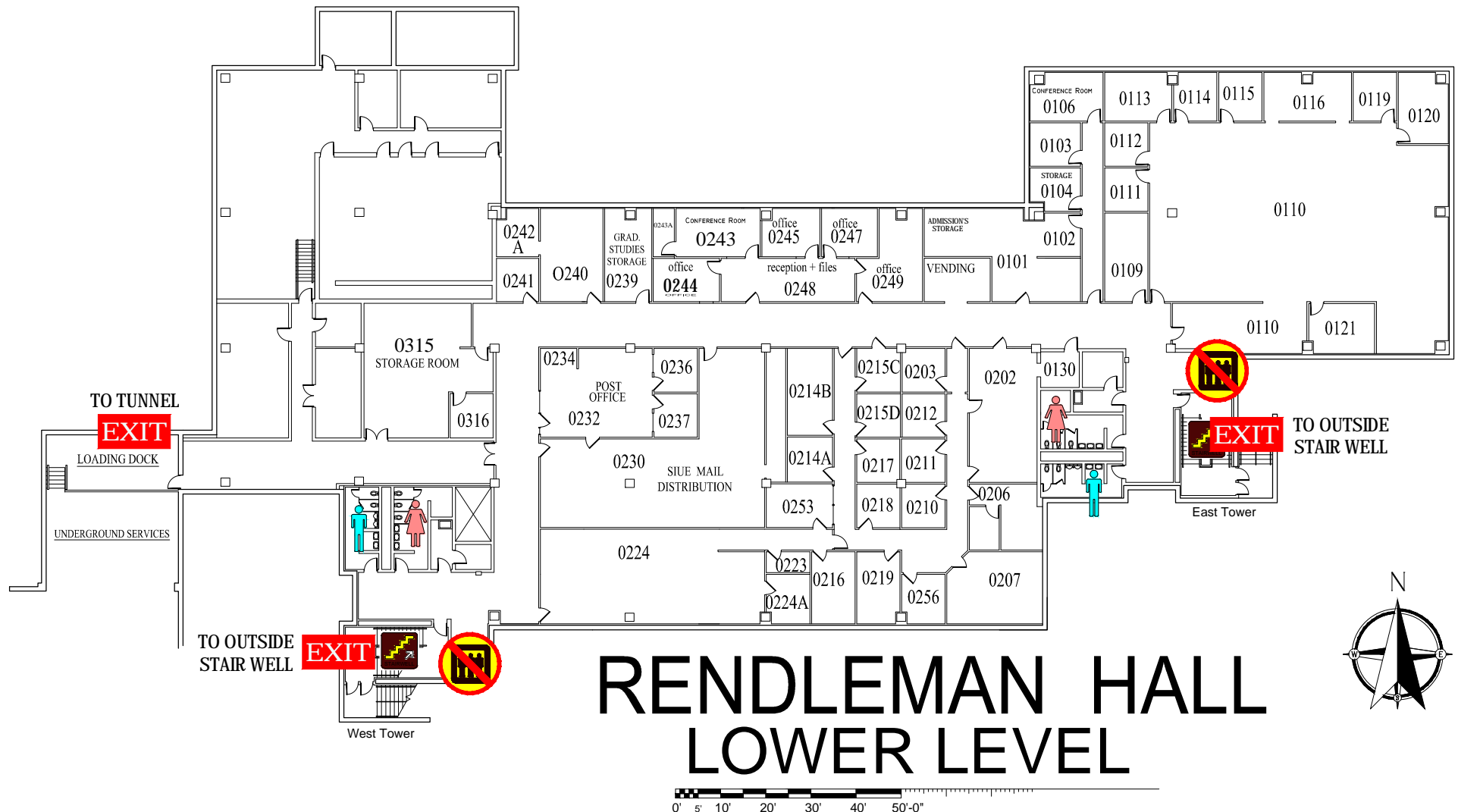


EMERGENCY EXIT PLAN

EXIT IN CASE OF EMERGENCY USE MARKED EXITS **EXIT**

 DO NOT USE ELEVATORS 

 WHEELCHAIR USERS ARE TO GO INTO 
STAIR WELLS **EXIT** AND WAIT FOR EMERGENCY PERSONNEL.



EMERGENCY EXIT PLAN

EXIT IN CASE OF EMERGENCY USE MARKED EXITS **EXIT**

 DO NOT USE OPEN STAIRS OR ELEVATORS 

 WHEELCHAIR USERS ARE TO GO INTO 
STAIR WELLS **EXIT** AND WAIT FOR EMERGENCY PERSONNEL.



1st FLOOR

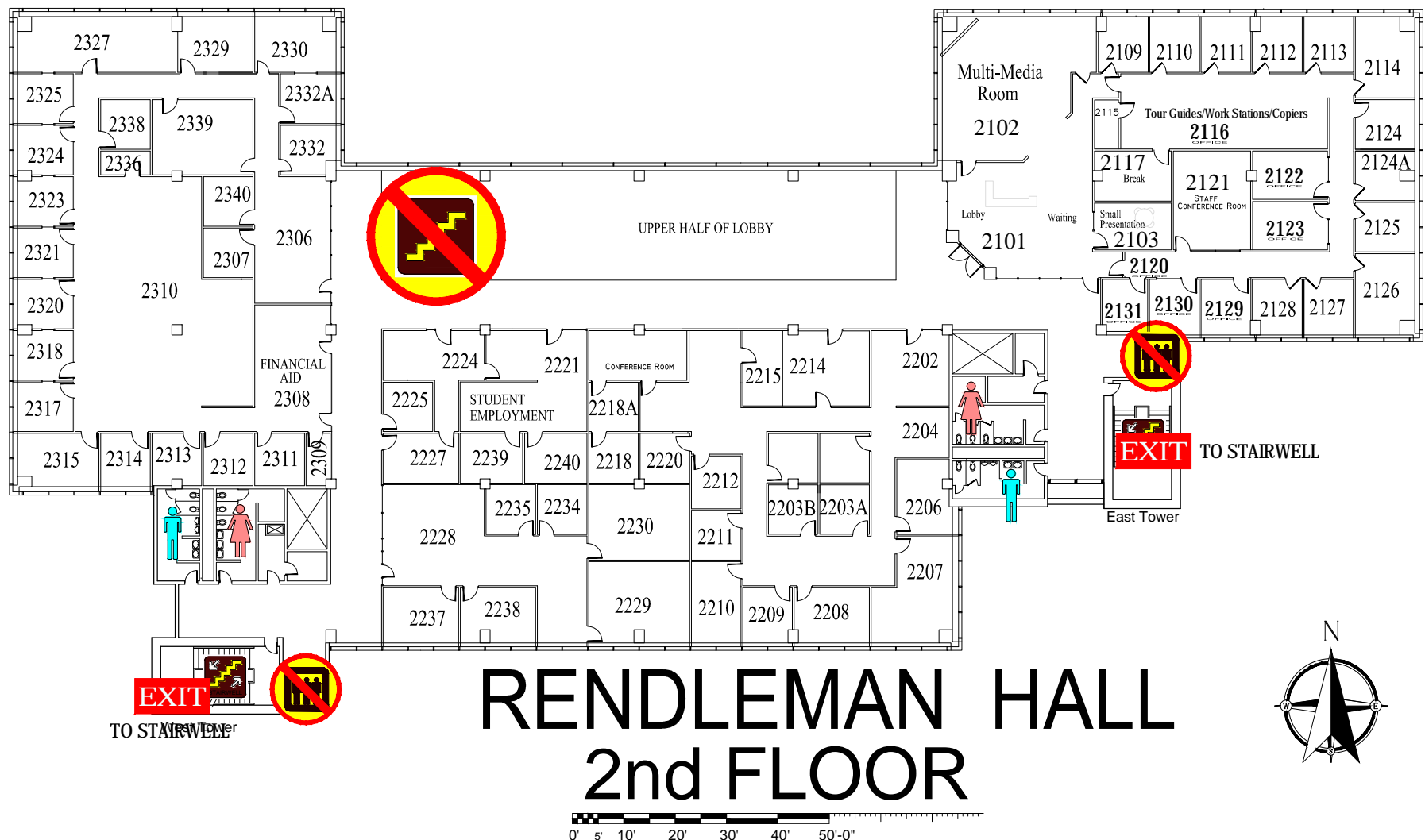
RENDLEMAN HALL

EMERGENCY EXIT PLAN

EXIT IN CASE OF EMERGENCY USE MARKED EXITS **EXIT**

 DO NOT USE OPEN STAIRS OR ELEVATORS 

 WHEELCHAIR USERS ARE TO GO INTO 
STAIR WELLS **EXIT** AND WAIT FOR EMERGENCY PERSONNEL.

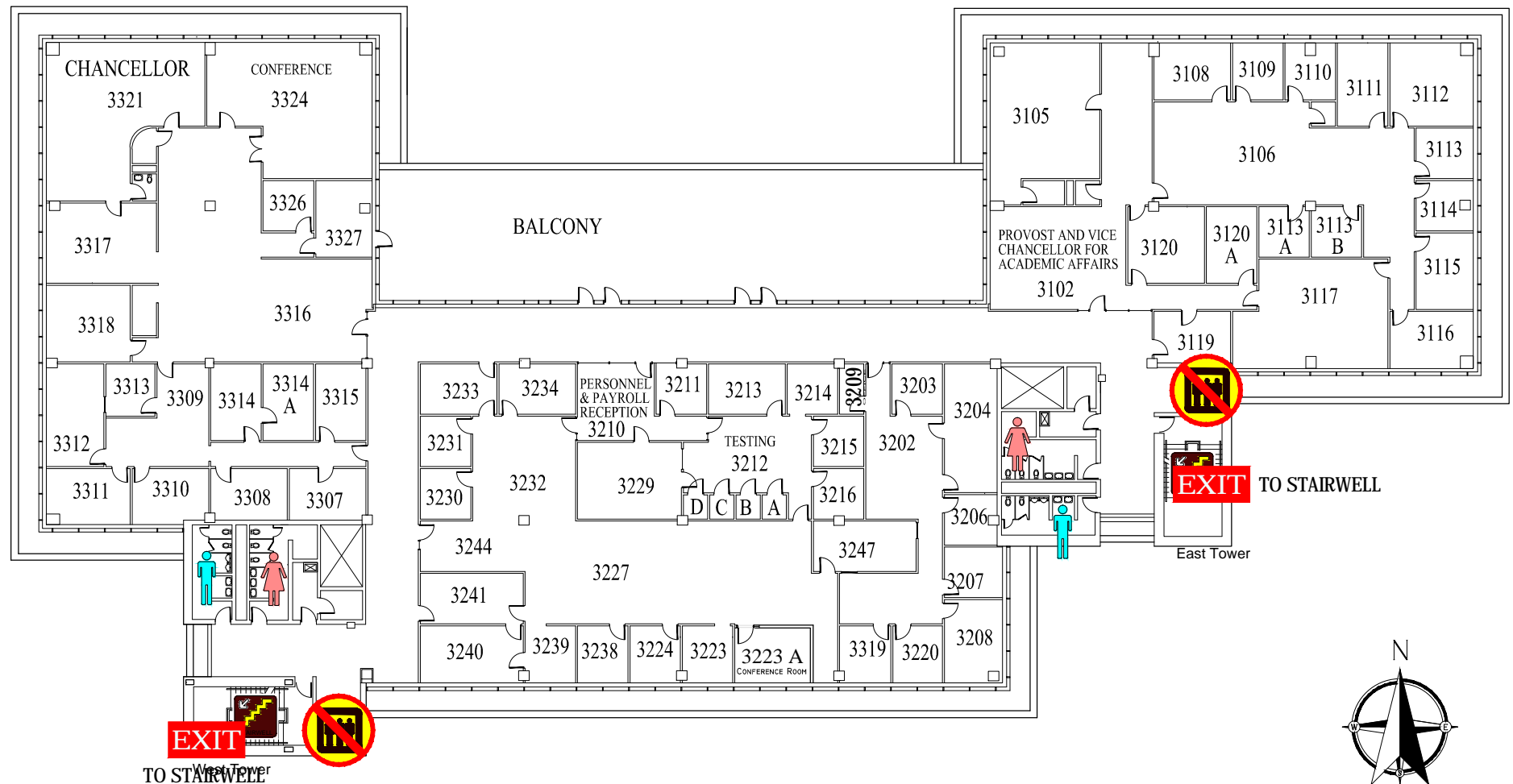


EMERGENCY EXIT PLAN

EXIT IN CASE OF EMERGENCY USE MARKED EXITS **EXIT**

 DO NOT USE ELEVATORS 

 WHEELCHAIR USERS ARE TO GO INTO 
STAIR WELLS **EXIT** AND WAIT FOR EMERGENCY PERSONNEL.



RENDLEMAN HALL 3rd FLOOR

0' 5' 10' 20' 30' 40' 50'-0"