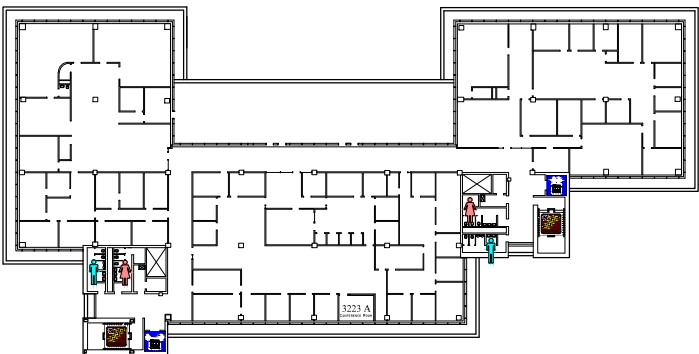
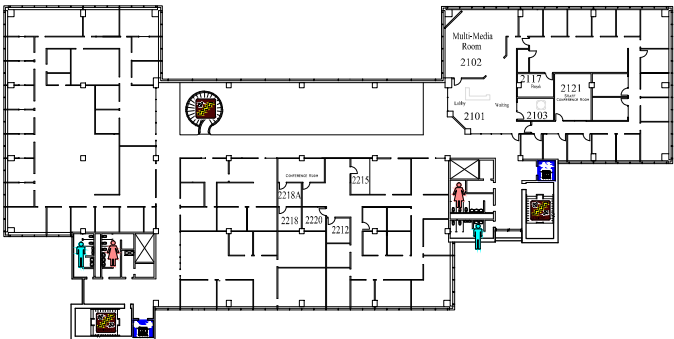


# RENDLEMAN HALL



3rd FLOOR

0' 10' 20' 30' 40' 50'-0"



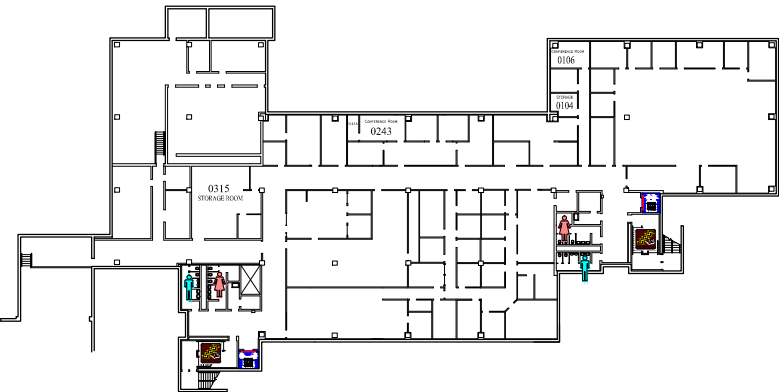
2nd FLOOR

0' 10' 20' 30' 40' 50'-0"



1st FLOOR

0' 10' 20' 30' 40' 50'-0"



LOWER LEVEL

0' 10' 20' 30' 40' 50'-0"

## 3rd FLOOR

HUMAN RESOURCES	3210
INSTITUTIONAL COMPLIANCE	3306
INSTITUTIONAL RESEARCH & STUDIES	3202
OFFICE OF CHANCELLOR	3316
PROVOST	3102

## 2nd FLOOR

MARKETING & COMMUNICATIONS	2101
VICE CHANC. FOR ADMINISTRATION	2228
STUDENT FINANCIAL AID	2308
STUDENT EMPLOYMENT	2221
VICE CHANC. FOR STUDENT AFFAIRS	2306
GRADUATE STUDIES & RESEARCH	2202

## 1st FLOOR

BURSAR	1101
BURSAR SATELLITE OFFICE	1308
EDUCATIONAL OUTREACH	1330
ENROLLMENT MANAGEMENT	1309
OFFICE OF THE REGISTRAR	1207
PARKING SERVICES	1113
STUDENT SERVICE CENTER	1309
TRANSFER CENTER	1218
VETERANS SERVICES	1207

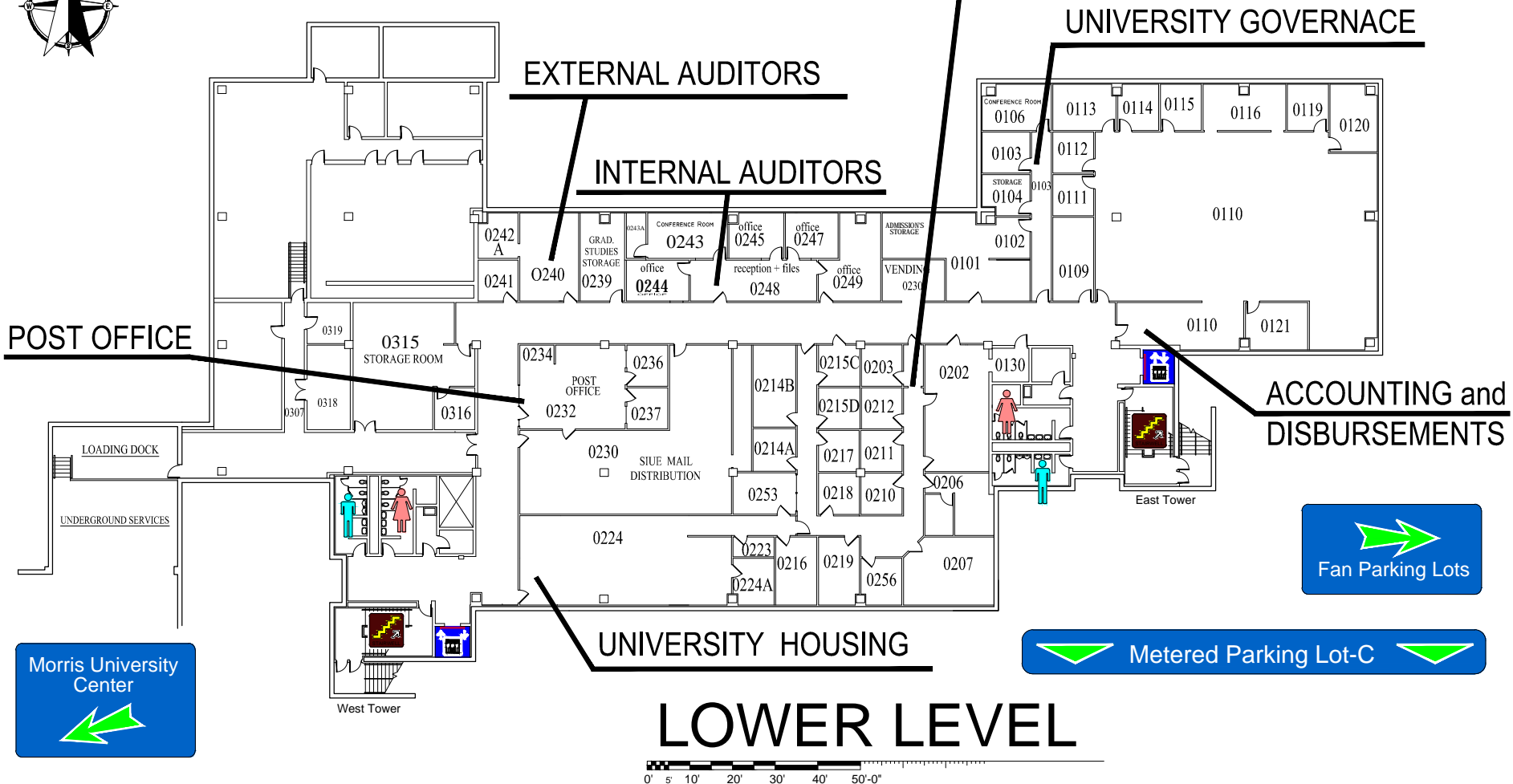
## LOWER LEVEL

ACCOUNTING and DISBURSEMENTS	0110
EXTERNAL AUDITORS	0240
INTERNAL AUDITORS	0248
ITS (Information Technology Services)	0203
POST OFFICE	0232
UNIVERSITY HOUSING	0224

# EMERGENCY

STORM SHELTERS  
&  
EXITS

Send Comments on Floor Plan to:  
**donande@siue.edu**



# John S. Rendleman Hall

Send Comments on Floor Plan to:

[donande@siue.edu](mailto:donande@siue.edu)



## STUDENT SERVICES CENTER EDUCATIONAL OUTREACH

## ENROLLMENT MANAGEMENT

## VETERANS SERVICES & OFFICE OF THE REGISTRAR

## BURSAR

## TRANSFER CENTER



Morris University Center



Fan Parking Lots



Metered Parking Lot-C

0' 5' 10' 20' 30' 40' 50'-0"

## 1st FLOOR

# John S. Rendleman Hall

donande@siue.edu

## STUDENT EMPLOYMENT

VICE CHANCELLOR  
FOR STUDENT AFFAIRS

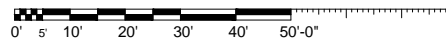
## GRADUATE STUDIES & RESEARCH

OFFICE of ADMISSIONS

# STUDENT FINANCIAL AID

VICE CHANCELLOR FOR ADMINISTRATION

## 2nd FLOOR



# John S. Rendleman Hall

Send Comments on Floor Plan to:

[donande@siue.edu](mailto:donande@siue.edu)

