

SOUTHERN ILLINOIS UNIVERSITY
EDWARDSVILLE



Online Services and Educational Outreach

SUMMER 2022 CATALOG

Enriching • Empowering • Engaging • Education for all



A MESSAGE FROM **THE DIRECTOR**

Welcome to our SIUE catalog for summer 2022
Offering courses and trips, both returning and new!
Try just one or take a few.

If tending a garden is one of your quests,
We can help you compost and combat pests.
Or perhaps in our wilderness walks, you'll invest.

You can step inside and try your hand at metalsmithing.
Shaping metal creations may just be your thing!
Would an acrylic painting class make your heart sing?

We're touring Historic Grafton on our first road trip,
Then off to the Marcoot Jersey Creamery we will zip.
A unique tour of Busch Stadium is our final summer trip.

What about a course to learn about Instagram?
I would enjoy seeing images of friends and fam.
If you have kids, then our summer camps may be your jam

Many classes don't require a trip in your car,
But you may come to campus for our series on guitar
Or work online to crochet like a star!

Complete your degree in psychology online
Or learn cake decorating in summertime.
And we have digital badges that may not cost a dime.

Finally, know that our work is never done.
Our staff strives to provide enrichment and fun.
We want your summer to be second to none.

Mary Ettling

Director, Online Services and Educational Outreach

SUMMER CAMPS



JUNIOR COUGARS SUMMER CAMPS

Instructed by SIUE Faculty

siue.edu/summer



VISUAL ARTS/WRITING

(Grades K-8)

- **Art Camp 1**
June 13-17
- **Art Camp 2**
June 27-July 1
- **Art Camp 3**
July 11-15
- **Writing Camp**
June 6-17
July 11-22

THEATER

(Grades K-12)

- **Cougar Theater Camp**
June 6-17
- **Musical Theater Camp**
July 25-29



MUSIC

(Grades 6-12)

- **Percussion Institute**
June 6-9
- **Flute Camp**
June 13-16
- **Summer Jazz Camp**
June 27-30
- **Summer Band Camp**
July 5-8
- **Music Technology and Composition Camp**
July 18-22

DANCE

(Grades 6-12)

- **Junior and Senior Dance Intensive**
June 27-July 1

STEM

(Grades 9-12)

- **Summer Diversity Healthcare Camp**
June 21-24
- **Engineering Camp**
June 6-10
June 13-17

STEM

(Grades 2-7)

- **Odyssey**
July 18-29

**EXTENDED
CAMP CARE
RETURNING!**

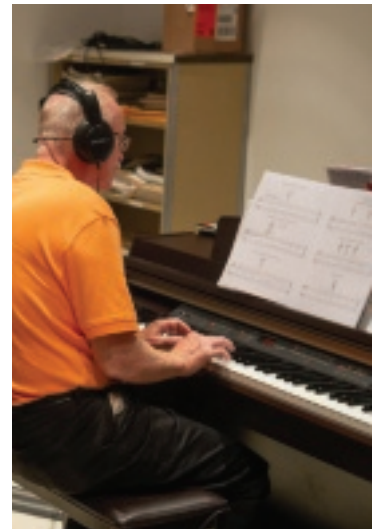
Please visit website for details.

TABLE OF CONTENTS

LIFELONG LEARNING SUMMER LIBRARY STEAM TOUR.....	4
COMMITMENT TO ANTI-RACISM	5
ONLINE BACHELOR'S DEGREE COMPLETION	6
PERSONAL DEVELOPMENT	7-19
<i>Languages</i>	
<i>Health and Wellness</i>	
<i>Creative Arts</i>	
<i>Culinary Arts</i>	
<i>Music</i>	
<i>Historical Studies</i>	
NEW! <i>Gardening</i>	
<i>Personal Enrichment</i>	
<i>Real Estate</i>	
<i>Learning on the Go</i>	
PROFESSIONAL DEVELOPMENT.....	20-28
<i>The Four Fits of Dynamic Leadership</i>	
<i>Instagram Marketing</i>	
<i>Learn the Basics of QuickBooks® Online</i>	
<i>Introductory Microsoft Excel 2019</i>	
<i>Intermediate Microsoft Excel 2019</i>	
<i>Industry-Aligned Credentials</i>	
<i>Certifications/Certificates</i>	
<i>Non-Profit Administration</i>	
<i>Online Certificate Opportunities</i>	
<i>Contract Training</i>	
LIFELONG LEARNING INSTITUTE.....	29
CONTINUING EDUCATION FOR LICENSED PROFESSIONALS.....	30-31
SIUE SUCCESSFUL COMMUNITIES COLLABORATIVE.....	32
OFF-CAMPUS AND CORPORATE PARTNERS	33
PARTNER HIGHLIGHT	33
EDUCARD.....	34
WORKFORCE INVESTMENT OPPORTUNITY ACT PROGRAM.....	35
ONLINE SERVICES AND EDUCATIONAL OUTREACH POLICIES.....	35

COVID-19 Mandatory Vaccination/Testing Policy

Please be advised that students, faculty, staff and community members attending any in-person events/courses on the SIUE campuses (Edwardsville, East St. Louis, Alton) must be fully vaccinated or are required to participate in weekly COVID-19 testing. Participants in our programs will be required to submit proof of full COVID-19 vaccination or an approved vaccination exemption and/or weekly negative PCR tests for the unvaccinated, including those with an approved vaccination exemption.



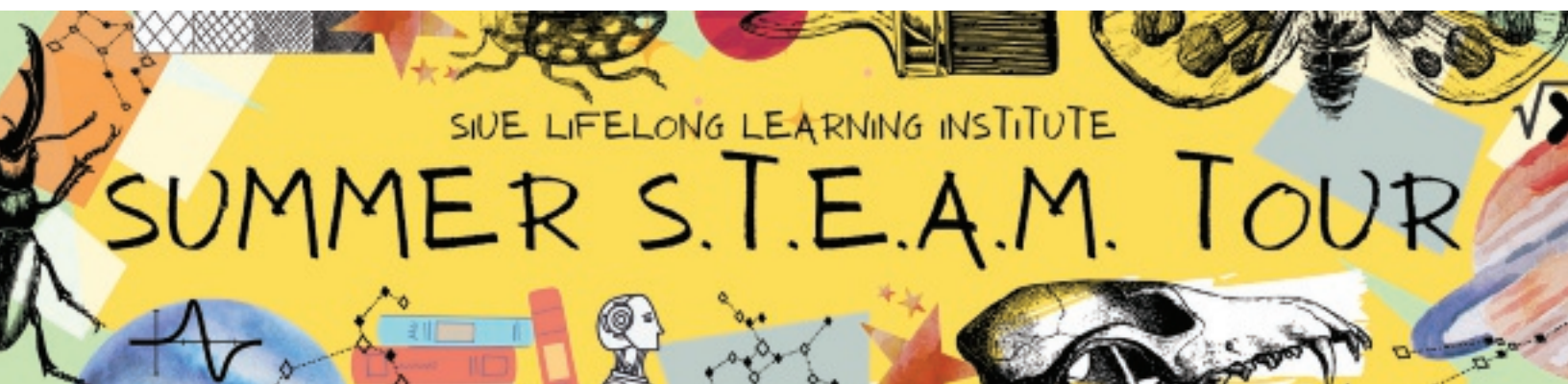
PIANO COURSES:
PAGE 15



NEW! GARDENING:
PAGES 16-17



GAME DESIGN:
PAGE 27



The Lifelong Learning Institute, The Center for STEM, and area libraries are partnering to offer educational programs and fun for ages 5 to 95. Bring your children, grandchildren, nieces, and nephews to your local library to identify insects and make your own bug, create a story with rock painting, learn more about what owls eat, and explore the constellations in our portable planetarium. Please note that activities vary by library. Check with participating libraries for specific program information and to register. Program availability, times and dates may be subject to change.

Columbia Public Library

Wednesday, May 25
10 a.m.-noon
Columbia, Ill.

Edwardsville Public Library

Wednesday, June 1
1-4 p.m.
Edwardsville, Ill.

O'Fallon Public Library

Wednesday, June 8
1-3 p.m.
O'Fallon, Ill.



East St. Louis Public Library

Wednesday, June 15
11 a.m.-1 p.m.
East St. Louis, Ill.

Six Mile Regional Library District

Johnson Road Branch
Wednesday, June 22
11 a.m.-1 p.m.
Granite City, Ill.

Six Mile Regional Library District

Delmar Avenue Branch
Wednesday, June 29
11 a.m.-1 p.m.
Granite City, Ill.

Glen Carbon Centennial Public Library

Wednesday, July 6
10 a.m.-noon
Glen Carbon, Ill.

Mascoutah Public Library

Wednesday, July 6
3-5 p.m.
Mascoutah, Ill.

Freeburg Area Library

Tuesday, July 12
1-3 p.m.
Freeburg, Ill.

Fairview Heights Public Library

Wednesday, July 13
11 a.m.-1 p.m.
Fairview Heights, Ill.

Hayner Public Library District

Alton Square Mall
Wednesday, Aug. 3
10 a.m.-12:30 p.m.
Alton, Ill.

For questions about the Summer STEAM Tour, contact Online Services and Educational Outreach at outreach@siue.edu or 618-650-3210.

Thank You!

The Lifelong Learning Institute thanks each of the area libraries and their staff for their support with these programs. Thank you to the SIUE STEM Center for their guidance and support with summer programming.





SIUE OFFICE OF ONLINE SERVICES AND EDUCATIONAL OUTREACH **COMMITMENT TO ADDRESSING AND COMBATING RACIAL INJUSTICE**

- P** It is the **POSITION** of the faculty and staff in Online Services and Educational Outreach that we condemn racism, racial inequities and oppression of all persons and are committed to nurturing positive change and working toward a more equitable society.
- E** We believe that critical reflection, direct action and accountability are essential in promoting positive change. Therefore, we promise to **EDUCATE** ourselves, our students and our community to be better agents of change by offering educational programming that will serve the public and allow us to work steadily toward a more just society.
- A** We will **ACT**, conduct business, govern our practices and continually reflect on all efforts to operate in a space that supports the sharing of knowledge through educational resources and community engagement.

In doing so we will:

- Share University resources, educational tools and other relevant activities with the community
 - Provide a free monthly reading or learning tool
 - Examine our departmental practices and encourage actions that increase equity and anti-racism
 - Support and enhance the efforts of community members, groups or partners working toward social justice and equity for all
- C** We are **COMMITTED** to providing accurate information and resource materials on racial justice issues, sustaining dialogue and ensuring equitable racial representation in the programs we offer. We will continuously work to inspire others to stand up and speak out against racial injustices.
 - E** We will sustain our commitment to social justice by continuously **EVALUATING** our efforts to evolve and publicly sharing our contributions as an office to shape a changing world.



It's never too late to finish your degree! **ONLINE BACHELOR'S DEGREE COMPLETION**

siue.edu/degree-completion

SIUE offers flexible, accelerated, fully online degree completion programs to fit the needs of adult learners like you. Our degree completion programs were developed to help you pursue educational success while you juggle life's responsibilities. You'll learn in a supportive, online environment that is focused on preparing you to accomplish your career goals without sacrificing personal, family and professional commitments.

Online Degree Completion Programs

- Applied Communication Studies, Public Relations
- Business Administration
- Criminal Justice Studies
- Integrative Studies, Leadership in Organizations
- Psychology

Advance your career and improve your quality of life with a bachelor's degree.

- **Increased Salary:** Bachelor's degree holders earn an average of \$10,000 more each year than those with an associate degree. (Bureau of Labor Statistics)

- **Career Success:** Nearly 90% of bachelor's degree holders view their job as a career and/or a stepping stone to a career. (Pew Research Center)
- **Job Security:** On average, unemployment rates are higher for individuals with some college and no degree when compared to a bachelor's or advanced degrees. (Bureau of Labor Statistics)
- **Enhanced Skills:** College graduates possess valuable critical thinking and problem-solving skills, which more than 80% of employers agree are important for success. (National Center for Higher Education Management Systems and the Association of American Colleges and Universities)

SIUE holds the same accreditations as many of the nation's most prestigious schools. Our online degree completion courses are held to the same high academic standards and are taught by the same highly qualified faculty who teach in SIUE classrooms. Through collaboration across campus, we are able to offer condensed course terms and flexible entry points throughout the year.

You can do this! Contact the team in Online Student Services for more information.



Stephanie Simpson
Assistant Director
Online Student Services
618-650-5834
strober@siue.edu



Monique Jameison
Online Student Success Coach
618-650-5833
mjameis@siue.edu



Nicole Myers
Academic Advisor
618-650-5525
nimyrs@siue.edu

PERSONAL DEVELOPMENT

siue.edu/personal-development



LANGUAGES



RETURNING!

Everyday Japanese: Let's Speak in Japanese

Let's get started with Japanese daily conversations! This course is designed for beginners who wish to develop basic conversational skills in a short period of time. No need to know the Japanese characters.

Course Fee: \$99*
Wednesdays, 6-7:30 p.m., June 1-29
SIUE Edwardsville Campus**



Spanish for Healthcare Professionals I

Health professionals work with many different people, and communication is key. This course will introduce you to the basic vocabulary, grammar and idiomatic expressions needed to communicate in Spanish in a health professional context. Focus on the conversational skills needed to successfully communicate basic information with Spanish-speaking patients with limited English proficiency. Materials are included in the cost of the course. No textbook is required for the course.

Course Fee: \$109
Saturdays, 8:30-11 :30 a.m., June 11-18
SIUE Edwardsville Campus**

Intensive English Program: Strengthen Your English Skills

SIUE's Intensive English Program (IEP) is a great resource for those who would like to strengthen their English skills and improve reading, writing, listening and/or speaking through interactive classes. This program offers affordable classes to English language learners in multiple skillsets. Each semester, the IEP offers a variety of English language classes to suit learners' needs. Visit siue.edu/iep for up-to-date information on course names and schedules, or contact Asha Kansal at askansa@siue.edu for more information. Courses run in eight-week blocks throughout the year and average 90 minutes per week. Registration deadlines are one week prior to each session's start date.

Course Fee: \$99 for first course/\$49 for any additional courses*
Various dates
SIUE Edwardsville Campus**

*Parking is included. Participants who will not utilize SIUE parking will pay a reduced rate at checkout.

**Participants must adhere to SIUE's COVID-19 Mandatory Vaccination/Testing Policy. See page 35.

HEALTH AND WELLNESS



Yoga and Breath Work

Breathing, like movement, is so fundamental to the human experience that we rarely even think about our breath. However, mindful movements and breath work, or intentional practices of breathing and moving, can deeply increase our quality of life. This class unites the art of mindful movement and breath work with practices in diverse breath work techniques and movements inspired by gentle yoga, Tai Chi, qi qong and more. Instructor: Louise M. Hamlin-Laird, E-RYT 200, E-RYT 500, YACEP

*Course Fee: \$99 for 10-week session;
Drop-ins welcome at \$15 per session
Thursdays, 11:30 a.m.-12:30 p.m., June 2-Aug. 4
Offered both in-person at Optimize Health and Wellness
and online via Zoom*

Yoga for Beginners/Intermediate

This class is for the experienced beginner who is ready for a gentle challenge. Class will begin with a gentle warm-up, transitioning into a flow that syncs our movement with our breath, and ending with a restorative pose to relax and stretch. Instructor: Louise M. Hamlin-Laird, E-RYT 200, E-RYT 500, YACEP

Course Fee: \$99 for 10-week session;
Drop-ins welcome at \$15 per session
Thursdays, 6-7 p.m., June 2-Aug. 4
Offered both in-person on SIUE Edwardsville Campus**
and online via Zoom*

Restorative Yoga

Restorative yoga is a powerfully gentle practice with exceptional benefits, such as the reduction of blood pressure and reduced risk of stroke or heart attack. Additionally, restorative yoga can help reset the body and relax the mind. The skills learned in this class have many other potential mental and physical benefits. A regular restorative yoga practice should be considered critical self-care for those employed in high-stress industries. You will learn the art of deep relaxation through breath work, restorative yoga poses and the use of props to ensure optimal comfort. With simple instruction and guided breath work, this class is accessible to all levels of experience. Instructor: Louise M. Hamlin-Laird, E-RYT 200, E-RYT 500, YACEP

*Course Fee: \$99 for 10-week session;
Drop-ins welcome at \$15 per session
Fridays, 5:30-6:30 p.m., June 3-Aug. 5
Offered both in-person at Optimize Health and Wellness
and online via Zoom*

Rise and Shine Yoga

Experience the benefits of early morning yoga as you stretch and strengthen your body, awaken and refresh your mind, and nourish your spirit. Our practice will focus on the synchronization of movement and breath. You will build endurance, strength, flexibility and mental focus; and leave feeling energized, refreshed and ready for anything the day has in store. Options to make this class more accessible while keeping it challenging will be given. This class may use optional weights. Instructor: Louise M. Hamlin-Laird, E-RYT 200, E-RYT 500, YACEP

*Course Fee: \$99 for 10-week session;
Drop-ins welcome at \$15 per session
Saturdays, 8-9 a.m., June 4-Aug. 6
Offered both in-person on SIUE Edwardsville Campus**
and online via Zoom*



Tai Chi Chuan

An ancient Chinese system of ballet-like calisthenics that stresses slow breathing, balanced and relaxed postures, and absolute calmness of mind. Like isometrics, it requires no barbells, medicine balls or other equipment; no special costume; and no special place for its practice. Young and old, male and female, weak and strong, all find in Tai Chi Chuan a wonderful source of relaxation and well-being (as stated by Robert W. Smith).

Course Fee: \$99
Tuesdays, 5:30-6:30 p.m., June 6-Aug. 12
SIUE Edwardsville Campus***

*Parking is included. Participants who will not utilize SIUE parking will pay a reduced rate at checkout.

**Participants must adhere to SIUE's COVID-19 Mandatory Vaccination/Testing Policy. See page 35.

CREATIVE ARTS

NEW!

Paint with Bob Ross

Join Ms. Ruthie and paint along with Mr. Bob! This is a fun class for all skill levels. You will be working with oil paints, brushes and turpenoid to clean your brushes. We will cue up an episode of "The Joy of Painting" and start and stop the episode while we paint along with Bob. All materials and instruction are included.

Course Fee: \$30

Choose from two sessions:

Fridays, 6-8 p.m.

- June 17
- July 15

Macoupin Art Collective, Staunton, Ill.

Adult One-Shot Wheel Throwing

First time at the wheel? Ever wanted to try wheel throwing? Now's your chance! Join us for a one-day, three-hour session where we'll walk you through the basics of wheel throwing. Lumpy pots and goofy bowls galore. No extended commitment necessary. Give it a shot and see if you like it! You'll throw 3-4 pieces on the wheel and pick them up 2-3 weeks later after they're dried, fired and glazed. We will dip your pieces into one of three glazes after they have dried. All work will be food safe, dishwasher safe and microwave safe. Students must be 16 years of age or older.

Course Fee: \$40

Choose from five sessions:

Fridays, 6-9 p.m.

Saturdays, 3-6 p.m.

- June 10
- June 11
- June 24
- June 25
- July 8
- July 9
- July 22
- July 23

Macoupin Art Collective, Staunton, Ill.

NEW!

Introduction to Acrylic Painting

Learn the basics of painting with acrylic paints from the comfort of your own home. From color mixing to shading and painting what you see, we'll paint a variety of subjects so you can feel confident painting on your own! A supply list will be provided so you can choose your own brushes, canvases, paints, etc.

Course Fee: \$79

Tuesdays, 6-8 p.m., June 7-July 12

Online via Zoom



Beginning Drawing

Think drawing is a gift that must come naturally? Drawing is a skill that can be developed with practice. You will learn how to draw with proper techniques and discover how to represent what you see through studies in contour drawing, perspective, positive/negative space and value.

Cost: \$79

Thursdays, 5-6:30 p.m., June 2-July 7

Online via Zoom

“

This course gave me additional skills while not being too overwhelming for someone who doesn't draw all the time.

– ADRIANA M.

”

“

Great course, regardless of your skill level. I took it just after the beginning class and learned so much. Those who were more experienced improved as well because of the personalized instruction.

– LINDA R.

”

Intermediate Drawing

For those with some drawing experience, you will refine and expand your drawing and observation skills.

Cost: \$79

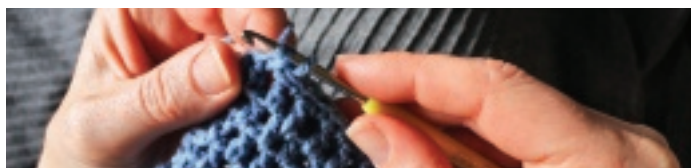
Thursdays, 6:30-8 p.m., June 2-July 7

Online via Zoom

Fun with Photography

Always wanted to take a photography class but felt intimidated by trying something new? Don't have a digital DSLR? That's okay in this class! Whether you are shooting with your digital DSLR, mirrorless/point and shoot digital camera, or phone, you will learn to take better pictures with what you already have. Learn photo fundamentals from photography greats past and present in weekly slideshows: the rule of thirds, depth of field, framing, aperture, shutter speed and ISO. Class materials needed include your camera of choice and a notebook. You will keep a photo journal to record your field notes while shooting and write about new-to-you photographers who have similar interests to your own. A creative offering via Zoom!

Course Fee: \$79
Tuesdays, 6-7:30 p.m., July 5-Aug. 9
Online via Zoom



Introduction to Crochet

Gain a general introduction to the art of crochet from home! You will apply various techniques using a variety of hook sizes, stitch types and yarn styles. You will complete an entire project over the length of the course. A list of materials will be provided so you may purchase your own hooks and yarn before the course begins.

Course Fee: \$119
Thursdays, 5-6:30 p.m., June 2 -Aug. 11
Online via Zoom

NEW! Stacker Rings with Stones

This single-night event will have you creating your own custom stacker rings! You will learn ring forming with heavy stock sterling silver wire, soldering with a gas torch, stone setting in calibrated bezels, and exploring surface finishes to personalize your rings. You should bring a basic tool kit that includes a saw frame, needle files and safety glasses. All other materials provided. No prerequisites required.

*Cost: \$119**
Choose from three sessions:
Wednesday, 5-8 p.m.
June 8
June 22
July 29
*Metalsmithing Studio, SIUE Edwardsville Campus**

**Parking is included. Participants who will not utilize SIUE parking will pay a reduced rate at checkout.*

***Participants must adhere to SIUE's COVID-19 Mandatory Vaccination/Testing Policy. See page 35.*

NEW! Stained-Glass Mobile

You will learn the entire process of Tiffany-style stained glass, including learning all the tools needed to break glass, grind glass, wrap glass in copper foil tape, and solder wrapped glass together. We will also use leaded wire and pliers to transform our stained-glass pieces into a mobile. Class fee includes all materials and instructions needed to make one stained glass mobile.

Course Fee: \$125
Saturdays, 11 a.m.-2 p.m., July 9-16
Macoupin Art Collective, Staunton, Ill.

NEW! Handbuilding Ceramics

This is an introductory class about constructing ceramic vessels out of flat slabs of clay. We typically work with soft slabs. Each session you will learn a new technique in ceramic handbuilding. For the majority of our classes, we will be using our slab roller to make sheets of clay and using those sheets to cut out pieces. Each piece will be joined with another slab. Then those sheets of clay can be used to make 2D and 3D ceramic objects. Ms. Brandy loves to make ceramic works that are functional. You may follow along with projects presented by Ms. Brandy or bring in pictures of projects you would need help in deciding the best way to build it. This class includes up to 25 pounds of clay, firing and glazing. We use a low-fire earthenware clay for our classes which will be food safe, microwave safe and dishwasher safe!

Course Fee: \$130
Saturdays, 11 a.m.-1 p.m., May 7-June 4
Macoupin Art Collective, Staunton, Ill.

NEW! Creating Volume with Hollow Forms

Create volume in your work through three-dimensional fabrication of sheet metal. You will advance your soldering and fabrication skill by creating hollow forms utilizing sheet metal that can transform into rings, pins, pendants, beads or boxes. You should bring a basic tool kit that includes a saw frame, needle files and safety glasses. All other materials provided. No prerequisites required.

Cost: \$279
Saturday and Sunday, 9 a.m.-5 p.m., Aug. 13-14
*Metalsmithing Studio, SIUE Edwardsville Campus**

CREATIVE ARTS (CONT.)



Foundations in Metalsmithing and Jewelry Making: Level 1

This weekend intensive foundational class introduces you to traditional techniques in metalsmithing and jewelry making through the manipulation of copper and brass utilizing power tools and hand tools. You will learn sawing, piercing, surface manipulation, basic forming, and cold and hot fabrication methods (riveting, gas torch soldering). You will sample techniques and develop a small personal project with instructors' guidance. No experience required.

Course Fee: \$279 (Includes all materials)

Choose from three sessions: Saturday-Sunday, 9 a.m.-5 p.m.

June 4-5 | June 16-17 | Aug. 6-7

*Metalsmithing Studio, SIUE Edwardsville Campus***

NEW! Settings: Bezels, Tabs and Rivets

Expand your jewelry designs by including stones, enamels or found objects into your work with cold or hot setting techniques. This course will explore methods for utilizing bezels, tabs and rivets for securing cabochons (flat backed stones), enameled work or alternative materials. You should bring a basic tool kit that includes a saw frame, saw blades, needle files and safety glasses. You are welcome to bring your own stones, sterling silver, enamels or alternative materials if you choose. Brass sheet/wire and additional materials and tools will be supplied. Prerequisite: Foundations Level I or instructor approval.

Cost: \$279

Saturday-Sunday, 9 a.m.-5 p.m. June 25-26

*Metalsmithing Studio, SIUE Edwardsville Campus***

NEW! Introduction to Vitrified Enamel on Metal

The application of powdered glass on metal is an ancient technique that can transform the surface and color of your work. This course will introduce you to the vast world of enameling. You will learn how to prepare metal surfaces to accept enamel, and kiln fire and torch fire techniques while sampling a variety of enamel application methods. You should bring a basic tool kit that includes a saw frame, saw blades, needle files and safety glasses. Copper sheet, enamels, and additional materials and tools will be supplied. Prerequisite: Foundations Level I or instructor approval.

Cost: \$279

Choose from two sessions:

Saturday-Sunday, 9 a.m.-5 p.m., June 11-12

Monday-Tuesday, 9 a.m.-5 p.m., Aug. 1-2

*Metalsmithing Studio, SIUE Edwardsville Campus***

**Parking is included. Participants who will not utilize SIUE parking will pay a reduced rate at checkout.*

***Participants must adhere to SIUE's COVID-19 Mandatory Vaccination/Testing Policy. See page 35.*

CULINARY ARTS



NEW! Greek Foods

This summer, escape to the Greek Isles in this culinary adventure! Learn to prepare and enjoy a traditional Greek salad with homemade Greek dressing; spanakopita, a Greek spinach pie filled with feta cheese and onions in phyllo dough; dolmades, ground beef and rice stuffed grape leaves; and souvlaki, a Greek street food of skewered chicken seasoned with Greek seasoning and served with homemade tzatziki sauce. For dessert, learn to make traditional Greek baklava. All recipes and instructions will be sent prior to the course so you can buy your ingredients and cook along with us!

Course Fee: \$49
Saturday, 1-4 p.m., June 4
Online via Zoom

NEW! Cooking with Kids! Back-to-School Fun

It's back-to-school time, so let's cook with kids! We will learn how to make homemade macaroni and cheese (without all the preservatives!), rainbow veggie rollups, easy cheesy meatball bites, s'more snack mix, and peanut butter and jelly stuffed cookies! Perfect snacks for after school that kids can make with an adult in advance and enjoy during the school week! Recipe variations for gluten-free, nut-free, vegetarian and vegan will be offered in the recipe packet, but variations may not be available for all recipes. All recipes and instructions will be sent prior to the course so you can buy your ingredients and cook along with us!

Course Fee: \$49
Saturday, 11 a.m.-2 p.m., Aug. 6
Online via Zoom

NEW! Basic Cake Decorating

Learn the fundamentals of basic cake-decorating tools and essential skills for beginners while developing your own technique for learning, applying and completing a frosted cake. You will master how to properly handle tools, fill icing bags, prepare your area for decorating, trim and layer a two-layer round cake, and decorate it. You will learn how to base-ice and pipe borders, as well as the first steps to begin writing on a cake. You will gain knowledge on color sets, proper form and execution of a presented cake. You will be provided with a list of tools and ingredients needed to be successful in this course!

Course Fee: \$79
Wednesdays, 5-7 p.m., June 8-July 13
Online via Zoom

BREADS

These award-winning classes are held at Artisan 222 Bakery in downtown Edwardsville. Participants take all recipes and finished products (20-30 loaves of bread) home. All ingredients will be provided for the baking process.

Artisan Breads I

Learn the basics of bread making, including the terminology, ingredient functionality, dough handling, fermentation steps, mixing and dough development, as well as the fermentation in the baking process.

Course Fee: \$139
Monday, Tuesday, Wednesday, 5-8 p.m., June 6-8
Artisan 222 Bakery, Edwardsville

Artisan Breads II

This course will build on the knowledge learned in Artisan Breads I. The focus will be on sourdough breads and the functions of bread making.

Course Fee: \$139
Choose from two sessions:
Monday, Tuesday, Wednesday, 5-8 p.m.
• June 20-22
• June 27-29
Artisan 222 Bakery, Edwardsville

German Breads

It's a rye lover's dream. We'll hit on six vastly different German Breads while also making rolls.

Course Fee: \$139
Monday, Tuesday, Wednesday, 5-8 p.m., July 11-13
Artisan 222 Bakery, Edwardsville

Italian Breads

A simple look at classic Italian bread recipes, including focaccia, ciabatta, fougasse and a couple of pizza dough recipes.

Course Fee: \$139
Choose from two sessions:
Monday, Tuesday, Wednesday, 5-8 p.m.
• July 18-20
• Aug. 1-3
Artisan 222 Bakery, Edwardsville

MUSIC



GUITAR

These classes are for beginning- and intermediate-level guitar players. Participants need to bring their own guitar to all sessions.

NEW! Guitar Chords and Rhythm

You will develop chords and strumming techniques on the guitar. You will learn how to play basic chords, strumming patterns and songs. You do not need any previous playing experience as this course is designed for those just beginning on guitar.

*Course Fee: \$99**

*Mondays, 6-7 p.m., June 6-Aug. 1 (No class July 4)
SIUE Edwardsville Campus***

NEW! American Roots Music

You will develop the skills and techniques for playing American roots music (country, bluegrass, blues and folk) on the guitar. You will need to have a basic understanding of chords on the guitar to participate in this course and will need to have access to an acoustic guitar.

*Course Fee: \$99**

*Mondays, 7:15-8:15 p.m., June 6-Aug. 1 (No class July 4)
SIUE Edwardsville Campus***

NEW! Introduction to Music Theory on Guitar

You will learn to develop music theory skills and techniques for the guitar. You will learn the theory of scales, harmony and melody on the guitar. You will need some previous guitar playing experience.

*Course Fee: \$99**

*Wednesdays, 6-7 p.m., June 8-July 27
SIUE Edwardsville Campus***

NEW! Reading Music for Guitar

Learn to develop your own skills and techniques for sight-reading on the guitar. You will focus on the ability to read notes and rhythms for sheet music and on the guitar. You will need some previous guitar playing experience.

*Course Fee: \$99**

*Wednesdays, 7:15-8:15 p.m., June 8-July 27
SIUE Edwardsville Campus***

**Parking is included. Participants who will not utilize SIUE parking will pay a reduced rate at checkout.*

***Participants must adhere to SIUE's COVID-19 Mandatory Vaccination/Testing Policy. See page 35.*

HISTORICAL STUDIES



RETURNING! Piano for Beginners

Learn the fundamentals of music theory while playing and applying those skills. Notes, rhythms, tempos and more will be taught. This is a great class if you've never touched a piano or if you played at one time and want a refresher course!

Course Fee: \$139*
Tuesdays, 6-7 p.m., June 7-Aug. 9
Dunham Hall, Room 2142, SIUE Edwardsville Campus**

“.....
An upbeat learning challenge
of the piano/music.

– CATHERINE J.

”

RETURNING! Intermediate Piano

Learn new skills, review some basics and play aloud in class. You will be able to bring your own pieces to play weekly, as well. Participants should have had at least a few years of piano lessons.

Course Fee: \$139*
Tuesdays, 7:15-8:15 p.m., June 7-Aug. 9
Dunham Hall, Room 2142, SIUE Edwardsville Campus**

Stories and Sandwiches: Family Trades and Professions

What does it mean to work as a drayer? In her book, “Harrison Trades and Professions,” editor and genealogist Polly Lynn investigates the range of skilled labor performed by descendants of John Harrison the Elder of Castleblayney, County Monaghan, Ireland. Learn about the everyday lives of Harrisons working such trades as blacksmith, carpenter, grocer, milliner, policeman and saddler, as well as the process in which professionals such as a judge, doctor, engineer and newspaperman were trained to perform their duties. Sandwich not included. While munching your sandwich supper, listen to the better stories selected from this book about work. This course is recommended for someone writing about their own ancestor, observing the changing labor market or interested in the early career of President Abraham Lincoln.

Course Fee: \$39
Tuesdays, 6-7:20 p.m., June 7-28 (No class June 21)
Area Library



Genealogy Research

Tracing family history is a fascinating journey. Learn about the genealogy research process and the way to interpret information through hands-on examples that help you dig deeper into your family's past. Make your family history come alive!

Course Fee: \$59
Tuesdays, 6-8 p.m., July 5-Aug. 9
Online via Zoom

“.....

Suzanne is a knowledgeable teacher
who is willing to help her students at any time
to better understand the subject of genealogy.

– PAMELA M.

”

*Parking is included. Participants who will not utilize SIUE parking will pay a reduced rate at checkout.

**Participants must adhere to SIUE's COVID-19 Mandatory Vaccination/Testing Policy. See page 35.

GARDENING

Whether you enjoy exploring nature or want to delve deeper into your own garden, we have the experience for you. Join us as we explore gardening to its fullest extent and learn new tips, tricks and techniques to get the most out of your gardening experience!



Into the Garden: Composting

Join a farmer on a classroom journey into the diverse and exciting world of composting. We will explore various container options you can build or buy; good old fashioned piles; composting using worms to speed the process up and produce a rich casting; and techniques, effort, benefits and downfalls of the different methods.

Course Fee: \$29
Thursday, 5-6:30 p.m., June 16
Online via Zoom

Into the Garden: Pest Management

Explore the various pests of the Midwest and their management strategies in this introductory and interactive lecture. We will be focusing on the most common insects eating your house plants, green house treasures and garden crops, along with the most sustainable solutions in terms of cost, environment and effectiveness.

Course Fee: \$29
Thursday, 5-6:30 p.m., June 30
Online via Zoom

Wilderness Walks at the Watershed

Enjoy a guided walk at the Watershed Nature Center, a park and nature preserve nestled in the heart of downtown Edwardsville. The walk will feature a tour of the three primary native habitats present and some information about native plants and animals that call the Watershed home. We will be on the lookout for signs of wildlife as we identify common invasive species and walk approximately one mile around the park. Dress for an adventure, bring water, wear sunscreen and consider bug repellent.

Course Fee: \$15 for one walk; \$179 for all 14 weeks;
children under 12 are free
Fridays, 5:30-6:45 p.m., May 6-Aug. 5
Watershed Nature Center, Edwardsville, Ill.



Introduction to Restoration Ecology

This two-day workshop starts with a Friday evening lecture at the Watershed Nature Center. We'll venture outside Saturday morning for hands-on field work identifying natives and removing invasive species. We will join the Watershed's team of volunteers for their monthly Restoration Day and will work with them and on independent projects as needed. The lecture will cover the basics of key native and invasive species identification and provide an introduction to the habitats at the Watershed Nature Center. Participants are invited to attend the Wilderness Walk at the Watershed Friday evening following the lecture for no additional cost.

Course Fee: \$39
Friday, 4-5 p.m., June 10
Saturday, 8-11 a.m., June 11
Watershed Nature Center, Edwardsville, Ill.

PERSONAL ENRICHMENT



Into the Garden: Plant Propagation

In this exciting two-hour workshop, we will discuss and practice propagation techniques for a variety of indoor and outdoor plants for home, landscape and garden. Plant propagation is a process for creating new plants through strategic cutting of a mother plant. You will make your own propagation box which you will take home to continue your propagation experiments.

*Course Fee: \$39**

Thursday, 5-7 p.m., June 23

*SIUE Edwardsville Campus***

Landscaping with Native Plants

In this three-week series, you will learn about native plants, their benefits, and how to incorporate them into your current or future landscaping, garden or farm. We will explore native habitats and common native plants used in landscaping, as well as how native plants can be used to manage storm water, prevent erosion, encourage pollinators and more. You will design your own real or imaginary site with the option to present your design or idea proposal for group discussion and feedback during the last class session.

Course Fee: \$59

Thursdays, 5-7 p.m., July 14-28

Online via Zoom

Stamp Collecting for Fun or Fame

If you have inherited a stamp collection, are thinking about starting a collection or are a current collector who considers themselves a novice, this course is for you! We will partake in a high-level overview and discussion for a topical collector, sharing tools of the trade, resources and various philatelic material you can use to enhance your collection. Discussion will be followed by a Q&A session hosted by the director of the National Museum of African Americans on Stamps.

Course Fee: \$29

Choose from three sessions:

Thursdays, 6-8 p.m.

- June 2

- July 7

- Aug. 4

Online via Zoom



Open Introduction to Golf: Level II

Ever wanted to learn to golf? Want to take your love of golf to the next level? Level II introduces you to golf fitness, course management and the nuances of the game. This course is a great refresher for the recreational player or a must for new golfers. Join us to learn the game in a mixed group setting. Let our PGA Professionals and TPI Certified Fitness Trainers work with you on being better—physically and mentally—for the course. Training will take place at the practice facility, putting green and on the course. Open to anyone age 12 and up. Please bring your own golf clubs.

Course Fee: \$139

Thursdays, 5-7 p.m., June 30-July 28

Sunset Hills Country Club, Edwardsville

**Parking is included. Participants who will not utilize SIUE parking will pay a reduced rate at checkout.*

***Participants must adhere to SIUE's COVID-19 Mandatory Vaccination/Testing Policy. See page 35.*

REAL ESTATE

REAL ESTATE

A home is the largest asset most people ever own. In this series of courses, you can learn how to improve your home's value, go from renting to owning, master the home buying process, become an agent and sell your home! A portion of all proceeds from the course sessions will be donated to the Main Street Community Center on behalf of the Jen Teske Homes of RE/MAX Alliance and Jean Lewis Homes of Keller Williams Pinnacle. Attend as many sessions as you like or attend them all for a reduced rate of \$115.

NEW! Improving Your Home's Value

It doesn't matter if you live in a mansion or a bungalow, getting top value out of your home can be possible through home improvements and maintenance. Jen and Jean will walk through the home improvements and maintenance that will increase your home's value. Knowing how to add space and what to update or replace can make a difference in your bottom line. Before you start sinking thousands of dollars into your home, attend this class to know what you can do to increase the value of your home.

Course Fee: \$25

Wednesday, 6-7:30 p.m., June 8

New American Funding, Glen Carbon, Ill.

NEW! From Renting to Owning

Are you ready to invest in your own property instead of your landlord's? Buying a home may be a closer reality for you than you think. Learn how much you need to save for a down payment, closing costs, inspections and other buying costs. Discover the minimum score you need to buy a home and learn how to improve your current score. When you are ready to buy, what do you do next? Find out what steps you can start taking today to become a homeowner tomorrow!

Course Fee: \$25

Wednesday, 6-7:30 p.m., June 15

New American Funding, Glen Carbon, Ill.

Master the Home Buying Process

A home is the largest asset most people will ever purchase. Learn the steps, timelines and financial requirements it takes to navigate through this process with ease. Jen and Jean have a combination of 36 years of experience as real estate agents and have assisted their clients in buying over 900 homes. They personally have purchased 17 homes and are also real estate investors. Jen has appeared on HGTV's House Hunters in her real-life role as a real estate agent.

Course Fee: \$35

Wednesdays, 6-7:30 p.m., June 22-29

New American Funding, Glen Carbon, Ill.

NEW! Thinking About a Career in Real Estate

Are you looking to change things up? Have you always been intrigued by the real estate industry? Real estate is a great career and REALTOR® Jean Lewis is excited to share what she knows about getting started in real estate and building a rewarding career. Start exploring your options and receive some great advice to help you jumpstart your career. Jean will cover everything in real estate from licensing to fees to expenses to sustainability.

Course Fee: \$25

Wednesday, 6-7:30 p.m., July 13

New American Funding, Glen Carbon, Ill.

Selling Your Home for Top Dollar

Will you be selling your home soon? Proper preparation of your property and a good understanding of the home-selling process are essential for getting top dollar and making it to the closing table. Jean and Jen will walk you through the entire home-selling process so you know what to expect. Topics covered will be maintenance, staging, inspections, appraisals and pricing. Jen and Jean have assisted their clients in buying and selling over 900 homes. Learn what years of experience have taught them about getting a home sold.

Course Fee: \$35

Wednesdays, 6-7:30 p.m., July 27-Aug. 10

New American Funding, Glen Carbon, Ill.



LEARNING ON THE GO

siue.edu/personal-development



NEW!

Explore Historical Grafton

Join us as we explore the historical side of Grafton, Ill. with a downtown walking tour. Following our walking tour, we will enjoy a sky ride to the top of the bluffs at the Aeries Resort. Lunch will be enjoyed at the restaurant atop the resort (lunch will be paid for on your own) before we ride the sky tour back down. We will end the day at the Grafton Winery for a tour and complimentary tastings of six of their famous wines. You may stay as long as you like after the tour ends and enjoy the winery.

Saturday, 9 a.m.-3:30 p.m., July 9

Cost: \$60

St. Louis Breweries and Distilleries: Guided Tour

Join us as we explore St. Louis breweries and distilleries. The adventure begins with a meeting at the first brewery at 10 a.m. and will continue caravan style for the remainder of the trip. We'll visit multiple distilleries and breweries for behind-the-scenes tours, tastings and a little history from SIUE's resident beer, wine and spirits expert, Bob Dixon, PhD, professor of chemistry. Registration fees cover all tours and tastings at each stop. Additional drinks and food are available for purchase at each location.

Saturday, 10 a.m.-4:30 p.m., July 23

Cost: \$50

PROFESSIONAL DEVELOPMENT

siue.edu/professional





The Four Fits of Dynamic Leadership

Today's workplace is more nuanced than ever, filled with diverse, dynamic employees. Empowering employees to achieve objectives is the basis of leadership, no matter the personality or strategies of each individual leader. Building a connection between the leader and the team is paramount, and doing so requires understanding each of the four fits or areas: mental, emotional, team and personal power. This comprehensive course explores each in detail and includes worksheets to clarify important lessons.

Course Fee: \$39
Wednesday, 6-7 p.m., June 15
Online via Zoom

Instagram Marketing: How to Use Instagram for Business

Instagram is a simple and effective way to market your business and connect with new customers. In this four-week course, we will begin with the basics, and you will learn to create a powerful, professional Instagram profile for your business designed to effectively appeal to your target customer. Even if you have an established business account, this course will dive deeper into strategies and tactics to highlight your brand and create a community of followers. Learn the tools to create quality content, grow your Instagram followers and market your business with highly targeted audiences.

Course Fee: \$59
Wednesday, 6:30-7:30 p.m., June 22-July 13
Online via Zoom



Learn the Basics of QuickBooks® Online

Learn basic accounting principles and how they are applied in the online version of QuickBooks. We will introduce the software, set up business accounts, record transactions, produce reports and learn how QuickBooks Online can be customized to fit your business needs.

Course Fee: \$79
Digital Badge Fee: \$49 (additional to the course fee)
Tuesdays and Thursdays, 6-7:30 p.m., July 5- Aug. 2
Online via Zoom

Introductory Microsoft Excel 2019

Designed for students with limited or no previous experience with Microsoft Excel, this beginner-level course will introduce you to Excel 2019. Included is an overview of basic functionality in Microsoft Excel, which will provide a foundation of the application. Topics covered include creating and managing multiple worksheets, rearranging data, working with basic formulas and formatting, inserting charts and graphics, and organizing large amounts of data. A brief introduction to Windows is included. Basic mouse and keyboarding skills are required. Textbook and online resource materials are provided.

*Course Fee: \$149**
Wednesdays, 6-8:45 p.m., May 11-June 22
*SIUE Edwardsville Campus***



Intermediate Microsoft Excel 2019

Designed for students with previous Microsoft Excel experience, this intermediate-level course will expand your Excel 2019 skill set with projects that demonstrate the application's higher capabilities. Topics covered include creating formulas that use data in multiple worksheets, working with advanced formulas and formatting, inserting charts and graphics, and writing functions. Introductory Excel 2019 knowledge and skills are required for this course; however, a brief review of basic Excel 2019 formulas will be included. Online resource materials are provided.

*Course Fee: \$149**
Wednesdays, 6-8:45 p.m., June 29-Aug. 10
*SIUE Edwardsville Campus***

*Parking is included. Participants who will not utilize SIUE parking will pay a reduced rate at checkout.

**Participants must adhere to SIUE's COVID-19 Mandatory Vaccination/Testing Policy. See page 35.

INDUSTRY-ALIGNED CREDENTIALS THAT CAN LEAD DIRECTLY TO JOBS

Digital badges leading to industry-aligned credentials are earned through a combination of online, self-paced modules, complimented by in-person and augmented reality hands-on learning to train and assess key employment competencies. Financial support for course tuition and fees may be available for eligible participants under the Workforce Innovation Opportunity Act. This series of badges is offered by SIUE, Madison County Employment and Training Department, and St. Clair County Intergovernmental Grants. Contact Kemp Muniz (kmuniz@siue.edu) for more information.



Laboratory Technician

Laboratory technicians, also known as biological technicians, set up, operate and maintain laboratory instruments and equipment; monitor experiments; collect data and samples; make observations; and calculate and record results. Rated as a Bright Outlook Occupation by the U.S. Department of Labor, laboratory technicians are frequently employed in chemical, pharmaceutical, environmental, waste management and material manufacturing industries. Delivered in a hybrid format with online courses and in-person laboratory sessions, the curriculum covers key employment skills, including science fundamentals, laboratory safety, general laboratory techniques and good manufacturing practices.

Course Fee: \$4,000

Digital Badge Fee: Included

Rolling enrollment

Hybrid (Online and SIUE Edwardsville Campus**)

*Parking is included. Participants who will not utilize SIUE parking will pay a reduced rate at checkout.

**Participants must adhere to SIUE's COVID-19 Mandatory Vaccination/Testing Policy. See page 35.



Food Science Technician

The food science technician digital badge series prepares learners for an entry- to mid-level career in food science industries such as food and beverage manufacturing, and related laboratory and quality assurance occupations. Food science technicians employ quantitative and qualitative techniques to determine physical and chemical properties and ensure food safety. Delivered in a hybrid format with online courses and in-person laboratory sessions, the curriculum covers key employment skills, including chemistry fundamentals, laboratory safety, general laboratory techniques, analytical chemistry techniques, chemistry lab manual, inventory/waste management, quality assurance/control and quality management, good manufacturing practices, and fundamentals of food science.

Course Fee: \$1,000

Pre-requisite: Laboratory Technician

Digital Badge Fee: Included

Rolling enrollment

*Hybrid (Online and SIUE Edwardsville Campus**)*



Chemical Technician

Chemical technicians support the research and development of new products and processes and work in a wide variety of industries, including food and beverage, biofuels, chemical, pharmaceutical, environmental, waste management, and material manufacturing. Delivered in a hybrid format with online courses and in-person laboratory sessions, the chemical technician curriculum covers key employment skills, including chemistry fundamentals, laboratory safety, general laboratory techniques, analytical chemistry techniques, chemistry lab manual, inventory/waste management, biochemistry/biotechnology, microbiology, and intermediate analytical techniques.

Course Fee: \$1,000

Pre-requisite: Laboratory Technician

Digital Badge Fee: Included

Rolling enrollment

*Hybrid (Online and SIUE Edwardsville Campus**)*

Alternative Digital Credential at SIUE

Certain professional development and educational offerings at SIUE offer learners the opportunity to earn a corresponding alternative digital credential to demonstrate their competency in or mastery of a given topic. SIUE's alternative digital credentials can be shared via social media, LinkedIn, personal websites and other electronic formats. Alternative digital credentials enhance individual's employment competitiveness by highlighting and defining their abilities relative to in-demand skills in their field or related skills that contribute to an employee's overall ability to thrive and adapt in a changing workplace. Only learners who successfully demonstrate the required competencies as defined in the course rubric will earn the alternative digital credential.

**Parking is included. Participants who will not utilize SIUE parking will pay a reduced rate at checkout.*

***Participants must adhere to SIUE's COVID-19 Mandatory Vaccination/Testing Policy. See page 35.*

CERTIFICATES/CERTIFICATIONS



RETURNING!

Heartsaver CPR/AED Certification

Heartsaver courses are designed for anyone with little or no medical training and cover first-aid basics for the most common first-aid emergencies. Hands-on training also prepares students to perform CPR and use an AED in a safe, timely and effective manner. A two-year certification card is issued upon course completion.

*Course Fee: \$99**

Choose from two sessions:

5:30 -8:30 p.m.

- *Wednesday, June 15*

- *Thursday, July 21*

*SIUE Edwardsville Campus***



Certified Recovery Support Specialist Training Program

SIUE and partners from regional mental health and substance use recovery advocacy, support, and treatment organizations look forward to offering the CRSS/CPRS Training Program, contingent upon receiving funds from the State of Illinois Division of Mental Health (IL DMH). Recovery support specialists provide a range of support services in healthcare and human services for persons recovering from mental health, substance use and co-occurring disorders. The CRSS/CPRS credentials require mastery of the knowledge and skills identified by the profession. The SIUE training program requires 110 hours of didactic education that address the core competency areas identified by the Illinois Certification Board and a 300-hour CRSS/CPRS internship under the supervision of a qualified mental health or substance use disorder professional. If funds are provided by IL DMH, all costs associated with this non-credit program will be paid for, including tuition, fees, books, internship stipends and certification exam fees. Additional stipends will be provided to help reduce barriers to program completion (e.g. child care, transportation).

The next cohort will begin September 2022. Please contact Jayme Swanke at crss-cprs@siue.edu for application information.

NON-PROFIT ADMINISTRATION



NEW!

Non-Profit Leadership Overview

A sound structure is critical for a thriving organization. This course will reinforce the foundational practices necessary for leading a successful non-profit organization, and is designed to satisfy the needs of both staff and board of directors. Topics include governance, finance, legal, advocacy, operations, programs and events, and communications.

Course Fee: \$149

Mondays, 5-8 p.m., June 13-Aug. 8 (No class on July 4)

Online via Zoom

**Parking is included. Participants who will not utilize SIUE parking will pay a reduced rate at checkout.*

***Participants must adhere to SIUE's COVID-19 Mandatory Vaccination/Testing Policy. See page 35.*

ONLINE CERTIFICATE OPPORTUNITIES

Boost your productivity and skill set with these convenient and engaging online courses from Learning Resources Network's UGotClass® program. Participate any time on any computer to learn from expert instructors. Register for the certificate option of any course grouping and attend all courses in the group for a discounted rate. Certificates are administered by UGotClass®. Registration and course deadlines are the same as individual courses.

Podcasting

Businesses are turning to podcasting to grow their brand and connect with customers. People with a niche hobby are turning podcasts into a business. Learn how to take your business or hobby and turn it into a podcast. This step-by-step class will take you from start to finish and cover the required elements needed to get your show online. Come to class with your idea and end with your show online for all to hear.

*Course/Certificate Fee: \$245
Available Online Only: June 6-July 1*

PODCASTING CERTIFICATE

Certificate administered by UGotClass® upon completion of Podcasting course.

Keys to Customer Service

Learning to build your customer service skills will have a powerful impact on your career success, as well as success in other areas of life. Through this course, you will discover the direct relationship between service skills and career achievement.

*Course Fee: \$145
Available Online Only: June 6-July 1*

Extraordinary Customer Service

Transform your customer service into something extraordinary. As a result, more repeat business will improve your bottom line. Extraordinary customer service comes from focusing on the essential elements that yield big results.

*Course Fee: \$145
Available Online Only: July 5-29*

CUSTOMER SERVICE CERTIFICATE

Register for the certificate option and receive a discounted rate for both Customer Service courses. Certificate administered by UGotClass®.

Certificate Fee: \$245

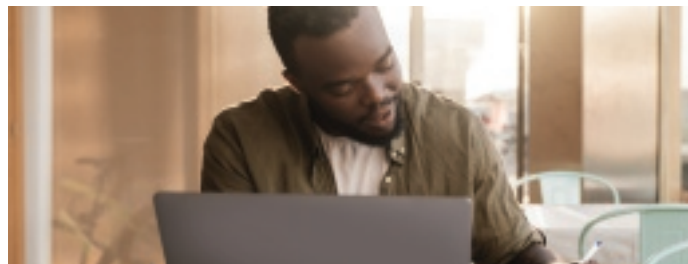
Advanced Live Online and Zoom Instructor Training

Take your Live Online teaching to the next level for greater student satisfaction, learning, completion and retention. Come away with information you can use Monday morning, including practical, how-to tips and techniques, plus the pedagogy of Live Online teaching. Taught by one of the foremost teachers of adults.

*Course Fee: \$195
Available Online Only: June 6-July 1*

ADVANCED LIVE ONLINE AND ZOOM INSTRUCTOR CERTIFICATE

Certificate administered by UGotClass® upon completion of Advanced Live Online course.



Beginning Conversational Spanish

Designed for beginners, this course will have you speaking and reading Spanish in no time. You will practice the basic building blocks of the language and common idiomatic expressions. You will know enough vocabulary and grammar for simple conversations, and you will learn how to ask and answer questions. Whether you speak some Spanish and need a refresher, or no Spanish, you will complete the course with the skills to communicate in Spanish.

*Course Fee: \$290
Available Online Only: June 6-July 29*

BEGINNING CONVERSATIONAL SPANISH CERTIFICATE

Certificate administered by UGotClass® upon completion of Beginning Conversational Spanish course.

ONLINE CERTIFICATE OPPORTUNITIES (CONT.)



Google Analytics

Aimed at non-technical users, this course will explain key techniques, including how to use the world-standard Google Analytics, a free online tool. You'll better understand your visitor traffic, learn how to calculate return on investment for your online advertising, and find out how to get more conversions and sales from your website visitors.

Course Fee: \$195

Available Online Only: June 6-July 1

Advanced Google Analytics

A project- and activity-based course, you will practice with Google Analytics for more advanced learning and skill development. Your instructor will work with you on implementing Google Analytics for your own website.

Course Fee: \$195

Available Online Only: July 5-29

GOOGLE ANALYTICS CERTIFICATE

Register for the certificate option and receive a discounted rate for both Google Analytics courses. Certificate administered by UGotClass®.

Certificate Fee: \$345



NEW! Video Marketing

Find out how to shoot simple, effective videos without costly fancy equipment or savvy technical skills. Discover the secrets to creating content that commands attention. Learn how to dominate Google and YouTube with your video and to strategically use YouTube to market your business 24/7 — even while you sleep.

Course Fee: \$245

Available Online Only: June 6-July 1

NEW! YouTube for Business

Learn how to get your YouTube video on the first page of Google Search. Just like Facebook, YouTube is a social network that needs to be set-up, optimized and used regularly to be effective. Your patterns of behavior on YouTube may be working against you. Learn how YouTube can complement your current marketing and social media strategy and how to maximize your YouTube Channel to get the greatest return.

Course Fee: \$245

Available Online Only: July 5-29

NEW! MASTERING VIDEO MARKETING CERTIFICATE

Register for the certificate option and receive a discounted rate for both Video Marketing courses. Certificate administered by UGotClass®.

Certificate Fee: \$395



Intermediate Video Game Design

Mobile games are the fastest-growing segment of the market as more and more people play casual games. In this intermediate course, you will learn the basics of video game design process, learn about the main video game genres, and use a game development application to begin your journey of making games.

Course Fee: \$245

Available Online Only: July 5-29

Introduction to Game Design

Games are increasingly recognized as a tool that can serve many business purposes beyond entertainment. This course provides a general introduction to what goes into the design and development of both video and analog games, with a particular focus on the use of games outside of consumer entertainment.

Course Fee: \$245

Available Online Only: June 6-July 1

BASIC GAME DESIGN CERTIFICATE

Register for the certificate option and receive both of the Game Design courses for a discounted rate. Certificate administered by UGotClass®.

Certificate Fee: \$395



Intermediate Six Sigma Green Belt

Organizations depend on the measurement and analysis of performance to make key decisions that affect the organization. This course builds on the ideas and skills learned in the introduction to Six Sigma Green Belt course that organizations, specifically their Six Sigma teams, use to improve. You will learn process analysis, data collection and analysis, probability and valid statistical conclusions, and hypothesis testing.

Course Fee: \$195

Available Online Only: July 5-29

Introduction to Six Sigma Green Belt

This challenging introduction to Six Sigma Green Belt course teaches critical skills required for Six Sigma practitioners. This first course in the certificate program explains the basic terms and proven Six Sigma problem-solving methods, team building tools, and descriptive statistics that are the basis for the statistical tools contributing to improvement of projects and the overall success of your organization.

Course Fee: \$195

Available Online Only: June 6-July 1

Advanced Six Sigma Green Belt

This final course teaches participants to improve and control processes. Topics included in this course include hypothesis-testing, design of experiments and statistical process control. The instructor will share many handouts, spreadsheets and web links that have tools participants will use while completing Six Sigma projects.

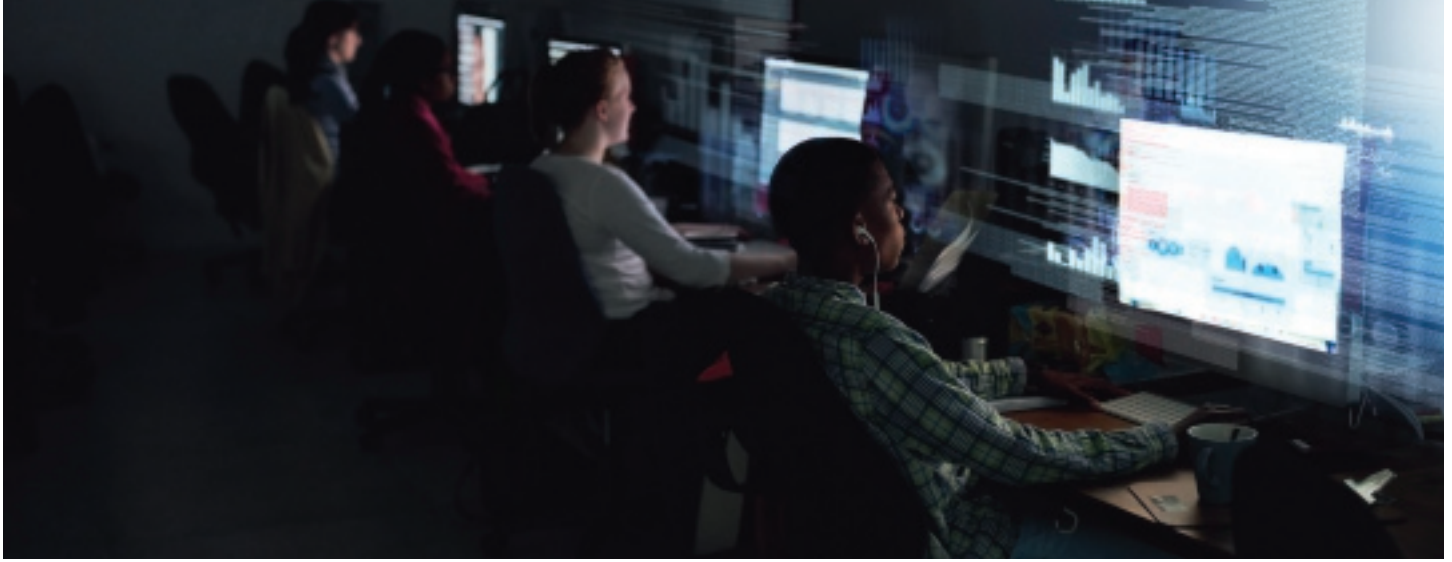
Course Fee: \$195

Available Online Only: August 1-26

SIX SIGMA GREEN BELT CERTIFICATE

Register for the certificate option and receive all three of the Six Sigma courses for a discounted rate. Certificate administered by UGotClass®.

Certificate Fee: \$495



Introduction to SQL

Learn how to write SQL code to create and populate database tables and how to write simple SQL queries that are capable of retrieving vast amounts of information from a database. You will discover the power of the relational database, learn how to create and manage database tables, and use SQL SELECT statements to pinpoint and retrieve data from a database.

Course Fee: \$245

Available Online Only: June 6-July 1

Intermediate SQL

Discover how to write powerful SQL queries that enable you to retrieve data from one table or from multiple tables stored in the database simultaneously. You will learn how to merge data from multiple columns, create calculated fields, and order and group the results from a query. You will also learn how to create a single join query or subquery to obtain data from multiple tables simultaneously.

Course Fee: \$595

Available Online Only: July 5-29

Advanced SQL

Take your SQL query skills to a new level. In this course, you will learn how to write advanced subqueries, advanced join queries and UNION queries that query more than one table. Learn how to use transaction processing to ensure SQL statements execute completely or not at all and how to create stored procedures to store SQL statements for execution.

Course Fee: \$595

Available Online Only: August 1-26

SQL CERTIFICATE

Register for the certificate option and receive all three of the SQL courses for a discounted rate. Certificate administered by UGotClass®.

Certificate Fee: \$595



Contract Training in HVAC

Designed for HVAC professionals, including engineers, designers, architects, contractors, energy auditors, technicians, facility managers, maintenance operators and other professionals interested in gaining a better understanding of some of the fundamental HVAC problems. These custom programs include, but are not limited to, the following topics and case studies:

- Understanding of Energy (energy issues, consumption, savings, efficiency)
- Energy and Psychrometric Analysis of Heating and Cooling Systems
- Basics of Heating and Cooling Load Calculations
- Heat and Moisture Transfer in Building Structures
- Understanding the Psychrometric Chart

Course Fee: Cost Varies

LIFELONG LEARNING INSTITUTE

siue.edu/lifelong-learning



The SIUE Lifelong Learning Institute provides programs designed for a lifetime of learning and personal growth. Community members may join for a fee of \$40 each semester. Benefits include free admission to Speaker Series talks, free or reduced-price experiences, courtesy borrowing privileges at the Lovejoy Library, and a discount on non-credit courses.

Lifelong Learning Experiences

Please note: All trips are tentative for summer 2022 pending COVID-19 restrictions. In the event of a cancellation, refunds will be given to registrants.

National Great Rivers Museum and the Melvin Price Locks & Dam

Join us for a guided tour of the National Great Rivers Museum in Alton, Ill. Learn the history of the Mississippi River and the Melvin Price Locks and Dam from the U.S. Army Corps of Engineers. Following the tour, we will gather for lunch just a few miles from the museum at My Just Desserts — famous for their homemade pies.

Wednesday, June 8, 11 a.m.-2:30 p.m.

2 Lock and Dam Way, Alton, Ill.

COST: \$10 for non-members; \$5 for Lifelong Learning members.

Lunch is not included in cost and is separate.

Take me out to Busch Stadium!

Do you love Cardinals baseball? Join us for a guided tour of the iconic Busch Stadium. We will explore the Champions Club, Musial Bridge, Redbird Roost, Cardinals Club, the warning track and the dugout (subject to COVID and ball club restrictions). Following our tour of Busch Stadium, we will go on a self-guided tour of the Cardinals Hall of Fame Museum at Ballpark Village. Afterwards, enjoy lunch on your own at Ballpark Village or your favorite downtown eatery.

Friday, July 29, 9:45 a.m.-2 p.m.

Gate 3, S. 8th Street, St. Louis

COST: \$18. Lunch is not included in cost and is separate.

Marcoot Jersey Creamery + Richard W. Bock Sculpture Museum + DeMoulin Museum

Join us for a tour of Marcoot Jersey Creamery, a seventh-generation dairy farm in Greenville, Ill., that specializes in artisan cheeses and specialty ice cream. Following lunch at Kahuna's, we will tour the Richard Bock Sculpture Museum which houses the work of American sculptor and Frank Lloyd Wright associate Richard Bock. We will finish our day at the DeMoulin Museum, home to the largest collection of wacky and unique lodge initiation devices.

Wednesday, August 17, 9 a.m.-4 p.m.

526 Dudleyville Road, Greenville, Ill.

COST: \$50 (Includes bus transportation); \$15 (Transportation not included). Lunch is not included in cost and is separate.

MEMBERSHIP

Fall 2021 and Spring 2022 Lifelong Learning Institute members are eligible for the Lifelong Learning Institute member rate noted for each experience.

CONTINUING EDUCATION FOR LICENSED PROFESSIONALS

siue.edu/professional



SIUE is an approved CEU provider by the State of Illinois for Social Work continuing education. If you are licensed/certified in any other state or province, please refer to the regulations in that state/province or the national board requirements to determine whether this will qualify for CEU credits.

Social Work Conference

THE ETHICS OF SELF-CARE

The Merriam-Webster Dictionary defines the phrase twenty-twenty as taking little effort to discern, judge or assess. It is ironic because the year 2020 was anything but easy or effortless for anyone, especially for social workers. The pandemic presented great challenges that required social workers to tap into our greatest strengths, including our devotion to service, passion for social justice and value of life. On the flip side, 2020 brought attention to concepts like grace, connection, self-care and self-compassion. As social workers, we embrace these concepts and preach them to our colleagues, clients and communities, but often forget to incorporate them into our own lives. This session will focus on our ethical responsibility to engage in self-care and help you find ways to be intentional about engaging in self-care, practicing self-compassion and connecting with a professional support network.

3 CEUs available

Conference Fee: Please check website for more details

Friday, July 22, 9 a.m.-4 p.m.

*N.O. Nelson Campus, LeClaire Room
Edwardsville, Ill.*

Social Work Conference

TRANSFORMING COMMUNITY, TRANSFORMING CARE: A PARTNERSHIP OF PLANNED PARENTHOOD AND METRO TRANS UMBRELLA GROUP

The training done by the Transforming Community, Transforming Care (TC2) partnership between Planned Parenthood and the Metro Trans Umbrella Group (MTUG) stems from the idea of “nothing about us, without us.” We value the importance of including and uplifting transgender and gender diverse individuals in the work of dismantling transphobia and cisgender and/or heterosexual normativity. MTUG’s “Trans 101” training will review the most current information about transgender identities and statistics, as well as local barriers and resources for the St. Louis metro area. The TC2’s “Trans 102” training will take a closer look at the ways the standards of social work intersect with ensuring respectful appropriate services and resources to trans and queer individuals and families. Finally, a panel of trans and queer individuals doing diversity work in medical settings can answer questions facilitated by someone from the SIUE Department of Social Work in order to ensure that we focus on any areas where participants may need to inquire further.

3 CEUs available

Conference Fee: Please check website for more details

Friday, July 22, 9 a.m.-4 p.m.

*N.O. Nelson Campus, LeClaire Room
Edwardsville, Ill.*



CATIA V5 Intro: Introduction to Solid and Assembly Modeling

This course emphasizes design and model interrogation of products based on 3D solid feature-based modeling using Catia V5. It covers sketching (using 2D curves to create 3D models), various modeling and interrogation and analysis methods, and introductory assembly modeling and drafting with 3D models. Different geometric modeling methods and the impact of 3D solid models on manufacturing will be briefly discussed. Software Catia V5 is used in order to practice lecture materials with various hands-on modeling and assembly projects, including ones for automobile and aircraft industries. This course is application oriented.

3 credits

Course Fee: \$3,311

Courses are offered on a continuous basis in 10-week cycles.

Please check the website for the most up-to-date information.

Courses are offered online via Zoom.

CATIA V5 Intermediate: Advanced Design and Assembly Management

This course emphasizes effective visualization/interrogation/modeling practices, performance enhancement tools, advanced sketcher techniques, advanced multi-section solid and rib/slot operations. Further time will be spent covering advanced duplication tools (patterns, powercopies), 3D part model transformation operations, multi-model links, managing external links, part design tables and catalogs, Catia Boolean operations, and wireframe and curve operation. Techniques to improve assembly design and optimize the assembly process, assembly operations (redefine, restructure), assembly duplication (multi-instantiation, component symmetry), assembly management (managing components, managing scenes), skeletons, assembly design tables, component degrees of freedom, designing parts in context, assembly features, managing external references, best practices for Top-Down Design, and Part and Assembly Analyses will also be covered.

Prerequisite: CATIA V5 Intro or equivalent

Course Fee: \$4,425

Courses are offered on a continuous basis in 10-week cycles.

Please check the website for the most up-to-date information.

Courses are offered online via Zoom.



NX11 Intro: Introduction to Solid and Assembly Modeling

This course emphasizes geometric modeling techniques, solid modeling, parametric and associative modeling, various visualization and model interrogation methods, measurements, UG user interface management, and Boolean operations of solid models. Further time will be spent on primitives and form features, edge and face operations, swept features and other features, Datum reference features, sketching, intro assembly modeling and mating constraints, draft intro, and industry applications.

Prerequisite: none

Course Fee: \$3,311

Courses are offered on a continuous basis in 10-week cycles.

Please check the website for the most up to date information.

Courses are offered Online via Zoom.

NX11 Intermediate: Advanced Design and Assembly Management

This course emphasizes assembly/disassembly sequencing and animation, part and assembly visualization and interrogation methods, swept features, review sketches, constraining sketching, positioning sketches, and additional sketching modeling techniques. Further time will be spent on reverse engineered 3D modeling, review of assembly modeling, assembly navigation tool, bottom-up, top-down, and design-in-context assembly modeling. Subassemblies and reference sets, interpart modeling and WAVE, interpart expression, feature-based component arrays, part families, revisions and substitutions in assembly models, assembly constraints/motion and arrangement, measurements/clearance analyses, and combined usage of UG and Excel, and industry applications will also be covered.

Prerequisite: NX11 Intro or equivalent

Course Fee: \$3,311

Courses are offered on a continuous basis in 10-week cycles.

Please check the website for the most up to date information.

Courses are offered Online via Zoom.



SIUE SUCCESSFUL COMMUNITIES COLLABORATIVE

siue.edu/successful-communities

CODES: Community-Oriented Digital Engagement Scholars

CODES, a three-year project that will implement a general education pathway that introduces underserved students to digital community engagement, has received \$100,000 in funding from the National Endowment for the Humanities. CODES' first cohort of scholars will begin in fall 2022.

The project is led by principal investigator (PI) Jessica DeSpain, PhD, professor in the Department of English Language and Literature and co-director of the SIUE Interdisciplinary Research and Informatics (IRIS) Center, and co-PI Connie Frey Spurlock, PhD, associate professor in the Department of Sociology and director of the SIUE Successful Communities Collaborative (SSCC).

"Designed for first-generation, Black, Latinx and/or Pell-eligible students, CODES aims to help students understand the integral role of the humanities in transdisciplinary problem solving at the earliest stages of their college careers," DeSpain said.

DeSpain will handle most of the project's curricular design and administration, while Frey Spurlock will focus on building community partnerships. CODES Scholars will work in small research teams that focus on a seemingly unsolvable problem, such as climate change or poverty's manifestations across rural and urban environments.

The CODES project blends and builds on multiple successful initiatives that make SIUE stand out regionally and nationally. The IRIS Center introduces more than 300 students to digital humanities methods through programming and classroom support each year. The SSCC pairs community organizations and municipalities with faculty and students to address environmental, social and economic needs.



@SIUESuccessfulCommunitiesCollaborative

OFF-CAMPUS AND CORPORATE PARTNERSHIPS

siue.edu/corporate

SIUE partners with organizations to offer educational and training opportunities for their employees. Through a unique contractual agreement, credit and non-credit opportunities are available to your staff so they can earn advanced credentials without ever receiving a bill from SIUE. Partnership students benefit from curriculum specifically designed for the working professional. If you do not see your employer on this list, we will be pleased to work with your human resources department to add your organization to our growing list of partners who recognize the value of investing in their employees' professional development.



Madison CUSD 12
Home of the Trojans



For more information, please contact:

Emily Skowron
Assistant Director of Off-Campus and Corporate Partnerships
Online Services and Educational Outreach
ehikes@siue.edu
618-650-3985

PARTNER HIGHLIGHTS



Sunset Hills Country Club collaborates with the SIUE Office of Online Services and Educational Outreach to provide introductory golf classes to the community. Sunset Hills Country Club is one of the most scenic golf courses in the greater St. Louis area. The 170-plus acres of hilly terrain boast mature trees, prairie grasses, fabulous flowers, and a colorful and lively butterfly garden. Enjoy a stroll through the natural beauty of Sunset Hills as each season brings a new and more majestic look to the course. Join the PGA trained and certified pros as you learn about the game of golf or host an event or celebration on their beautiful landscape. Community members love to visit the course and host events such as scholarship fundraisers, galas and weddings in the clubhouse.

EDUCARD

Do you want the opportunity to explore possibilities of professional growth or personal enrichment in an economical and flexible way?

If you answered "Yes," we invite you to sit in on regular classes at SIUE through our Educard Program.

What is Educard?

Educard is a special community program that allows you to attend selected credit classes offered by SIUE. It provides an opportunity for you to sample the subjects that interest you most, from accounting to zoology.

How do I register?

Visit siue.edu/continuing-education/educard.

You may also register in person Monday-Friday, 8 a.m.-4:30 p.m. Please do not send payment with your registration.

What is the cost?

The cost is \$60 per class.

Who is eligible for Educard?

Anyone who is not currently enrolled for credit in the University is eligible. High school students are eligible and may take up to three classes.

Which classes are approved for Educard participation?

A wide variety of classes, on-campus* ONLY, are approved for Educard participation. The classes not offered through Educard are classes with a full enrollment, non-credit classes, travel study, online classes, distance education, classes in which a danger may exist, classes requiring prerequisites, and classes where added direct expense may be incurred by the University.

For a full list of classes, please visit banner.siue.edu/ssb and click Class Schedule. Select the Spring 2022 term and search any subject you would like.

**Please note:*

- Due to COVID-19 protocols, some courses may not be available and limited capacity may be observed.
- Participants must adhere to SIUE's COVID-19 Mandatory Vaccination/Testing Policy. See page 35.

What is not included?

- You will not receive a grade as an Educard participant.
- No official records of your classwork or attendance will be kept; therefore, no transcript is available.
- Since you do not pay normal student welfare and activity fees, you may not participate in student services and activities supported by those fees.

What about textbooks?

As an Educard participant, you may borrow textbooks, as available, at no cost through Textbook Service, located at 200 University Park Drive, lower level. You may pick up your textbooks after the first week of classes, and you are required to return textbooks to Textbook Service at the end of the term.

Who can answer questions about Educard?

For more information about Educard, contact:

Online Services and Educational Outreach

Rendleman Hall, Room 1330

618-650-3210

outreach@siue.edu

siue.edu/educard

WORKFORCE INNOVATION OPPORTUNITY ACT PROGRAM

Unemployed? Underemployed?

SIUE serves students through the Workforce Innovation Opportunity Act (WIOA) Program

SIUE works regularly with county and state employment and training agencies to help match eligible students with funding. Individuals who are unemployed, underemployed or experiencing financial hardship may be eligible for support to complete their educational programs. Students must be seeking a credential in a high-demand employment field, be within two years or less of completing their degree, and meet local workforce criteria to qualify.

If you are seeking employment in an in-demand field and are interested in learning more about funding opportunities that will help you complete an SIUE program, please contact us at outreach@siue.edu or reach out directly to your county provider:

- Madison County Employment and Training Department (Bond, Jersey and Calhoun Counties), 618-296-4301
- St. Clair County Intergovernmental Grants Department Workforce Development Group (St. Clair, Monroe, Randolph, Clinton and Washington Counties), 618-825-3259
- siue.edu/financial-aid/wioa



ONLINE SERVICES AND EDUCATIONAL OUTREACH POLICIES

Cancellation/Refund Policy

All cancellation/refund requests must be made in writing and emailed to outreach@siue.edu. Cancellation/refund requests must be received at least five business days prior to the first day of any conference, course or event, unless otherwise specified. A refund, minus a \$15 administrative fee, will be processed as long as the above terms are met. If you have questions regarding this policy, please contact us at 618-650-3210 or outreach@siue.edu.

Parking on Campus

For courses on the SIUE main campus, parking is included in the cost of the course. A reduced price is available at checkout for participants who do not need parking or prefer to pay for parking on their own. Parking passes will be emailed to paid registered participants; please provide a valid license plate number to avoid paying additional parking fines. The printed pass must be displayed on the dashboard of the registered vehicle and is valid only during the times of the course (30-minute grace period is extended for travel to and from the meeting location).

Accommodations

The Office of Online Services and Educational Outreach is committed to providing universally accessible services and opportunities throughout our programming. If you need assistance or an accommodation, please contact our office: 618-650-3210, outreach@siue.edu or by mail (Online Services and Educational Outreach, Box 1084, Edwardsville, IL 62026) upon registration and/or at least three days prior to the offering to allow us time to accommodate your needs.

COVID-19 Mandatory Vaccination/Testing Policy

The Office of Online Services and Education Outreach is committed to providing a safe and secure environment for all participants. Please be advised that students, faculty, staff and community members attending any in-person events/courses on the SIUE campuses (Edwardsville, East St. Louis, Alton) must be fully vaccinated or are required to participate in weekly COVID-19 testing. Participants in our programs will be required to submit proof of full COVID-19 vaccination or an approved vaccination exemption and/or weekly negative PCR tests for the unvaccinated, including those with an approved vaccination exemption.

Please contact us at 618-650-3210 or outreach@siue.edu with questions.

Payments are accepted in the following ways:



Online:
siue.edu/educational-outreach



In Person: Visit us weekdays 8 a.m.-4:30 p.m.
in Rendleman Hall, Room 1330



Mail: Send this completed registration form
and payment to:



Phone: Call 618-650-3210 and pay using a
credit card

SIUE Office of Online Services and Educational Outreach
Box 1084 | Edwardsville, IL 62026

REGISTRATION FORM

Date: _____

Name _____
Last First Middle

Email _____ Phone _____

Address _____
Street City State ZIP

License Plate Number *if parking pass is needed* _____

Non-credit Course: ☐

Educard: ☐

Course Title: _____ Fee: _____

Course Title: _____ Fee: _____

Course Title: _____ Fee: _____

Course Title: _____ Fee: _____

Methods of Payment: ☐ Cash ☐ Check ☐ Credit Card



Credit Card _____
Number Expiration Date CVC Signature

Other Information

☐ I would like to teach a course on _____

☐ I would be interested in taking a course on _____

☐ I would like to be added to the email list (Please provide email) _____

☐ **I would like to make a donation to the Office of Online Services and Educational Outreach**
(Please fill in method of payment above and return to the below address. Thank you for your generosity!)