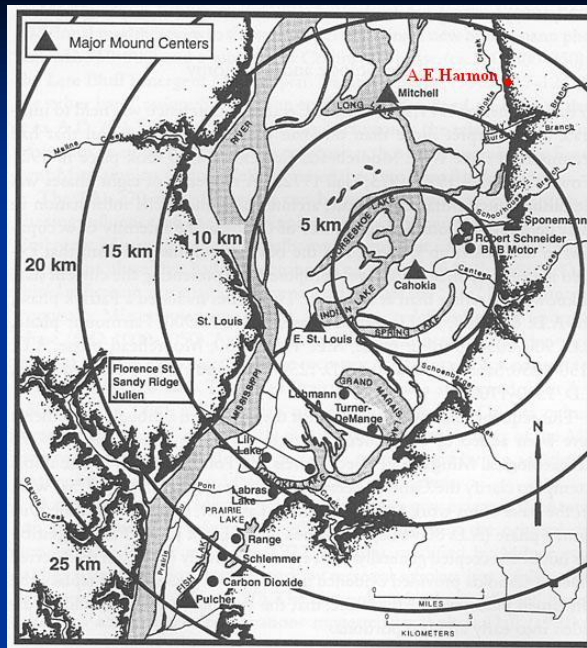


SIUE field school excavations at the A.E. Harmon Site (Summer 2002)

The site

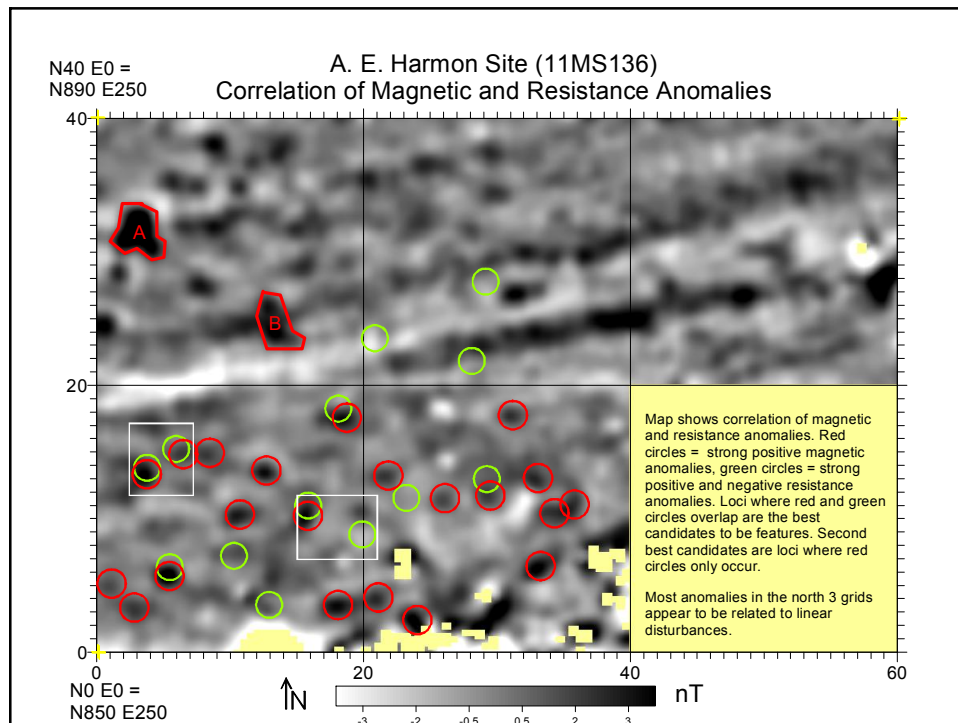
The AE Harmon site (11MS136) is located on the bluff at the north end of the American Bottom, in modern day Edwardsville, Illinois.



Remote sensing



In April of 2002, Dr. Mike Hargrave of Engineer Research and Development Center/Construction Engineering Research Laboratory conducted a magnetic gradient survey and an electrical resistance survey at the site. This is the map he made, with locations of excavation approximated:



West block: removing plowzone



West block



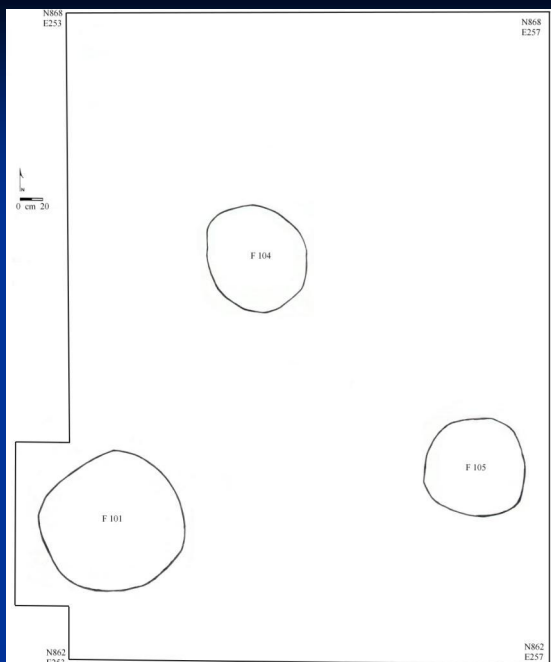
West block, plowzone removed



Features 101, 104, and 105

West block

Plan view





Late Woodland ceramics from Feature 101





Opening the east block

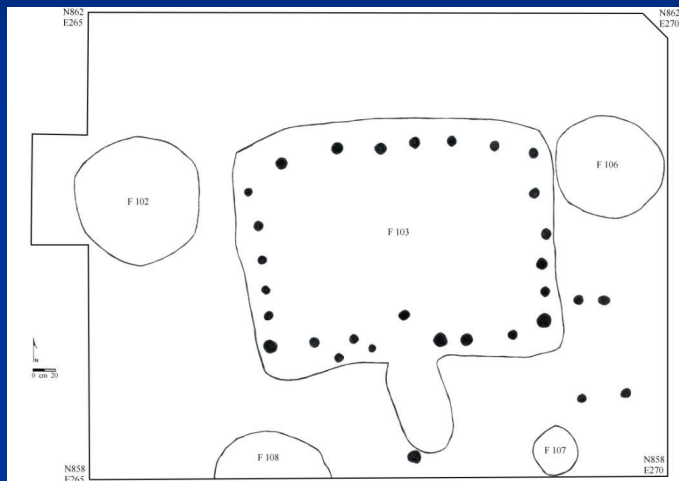


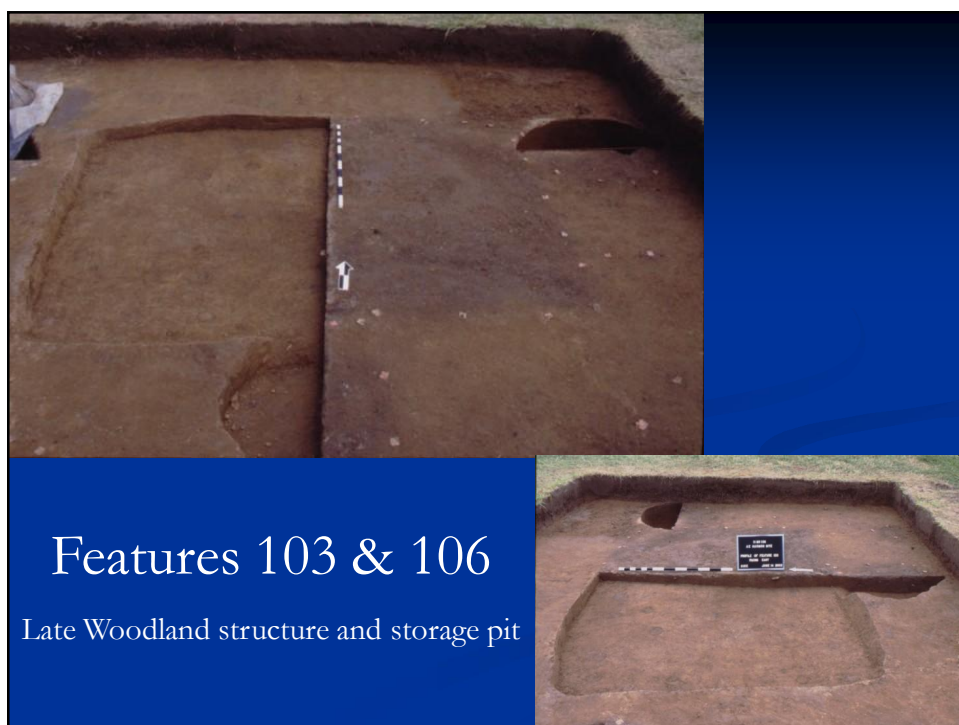
Features 102 & 103

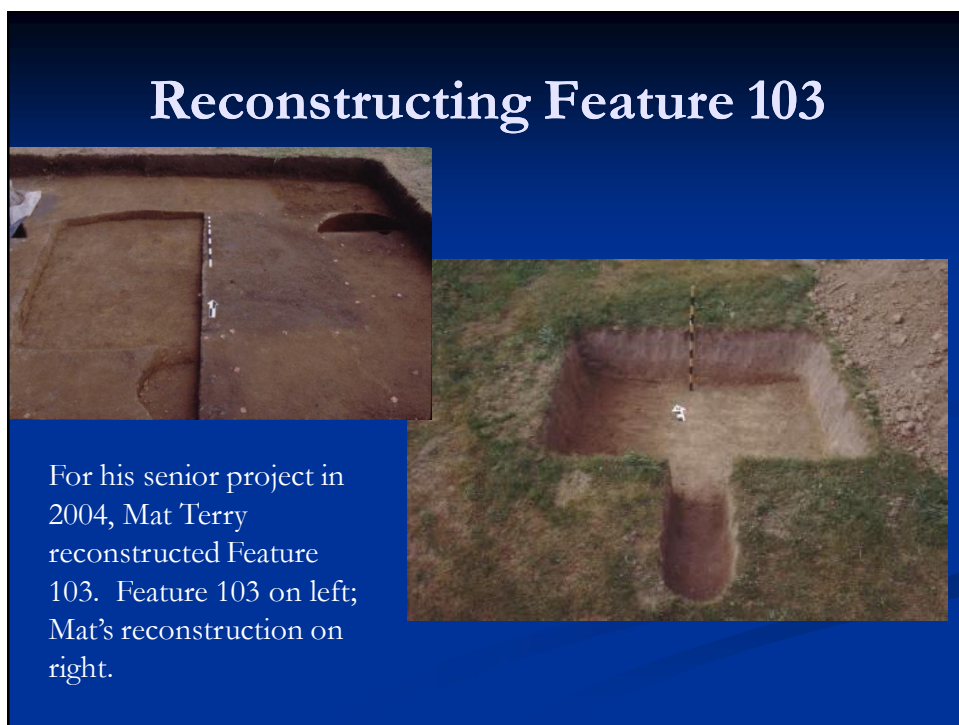


East block

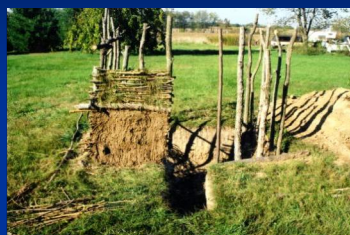
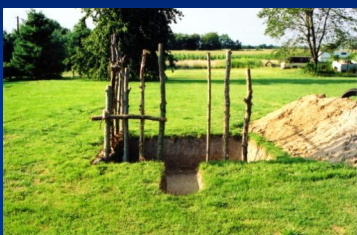
Plan view



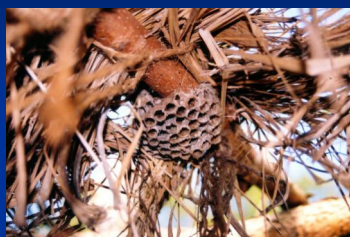




Mat's reconstruction



Mat's reconstruction deconstructing



Mat's paper was published in Vol. 19
(2007) of *Illinois Archaeology*.

Reconstructing Feature 103

For her senior project in 2004, Valerie Starr Eachus did a virtual reconstruction of Feature 103.



Val's paper was also published in Vol. 19 (2007) of *Illinois Archaeology*.



Feature 102

Late Woodland storage pit





Late Woodland
Sponemann phase
ceramics from
Feature 106



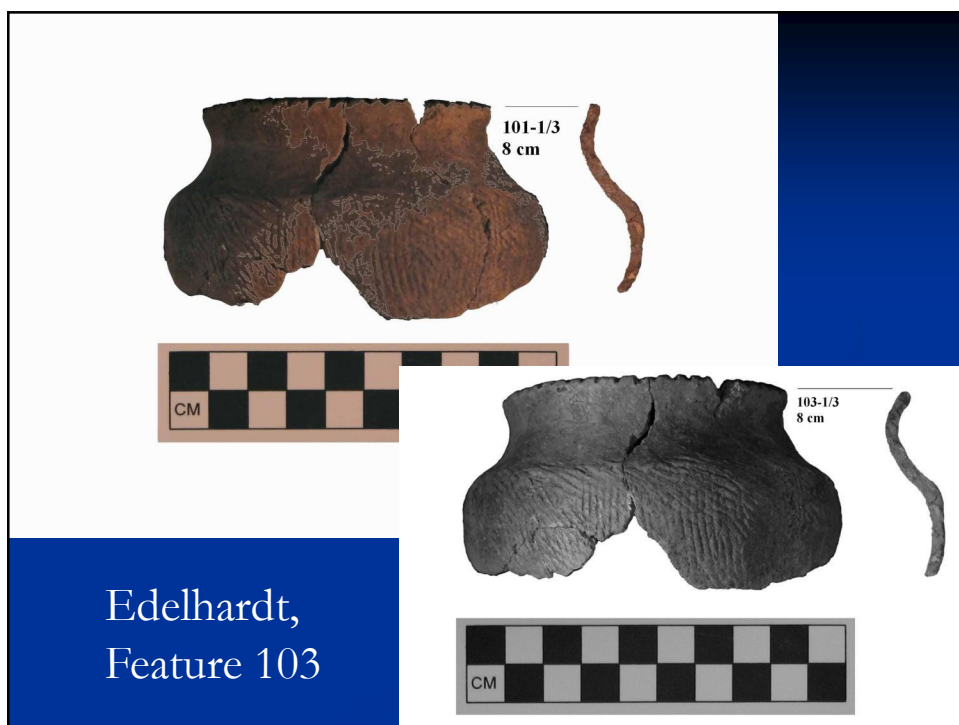
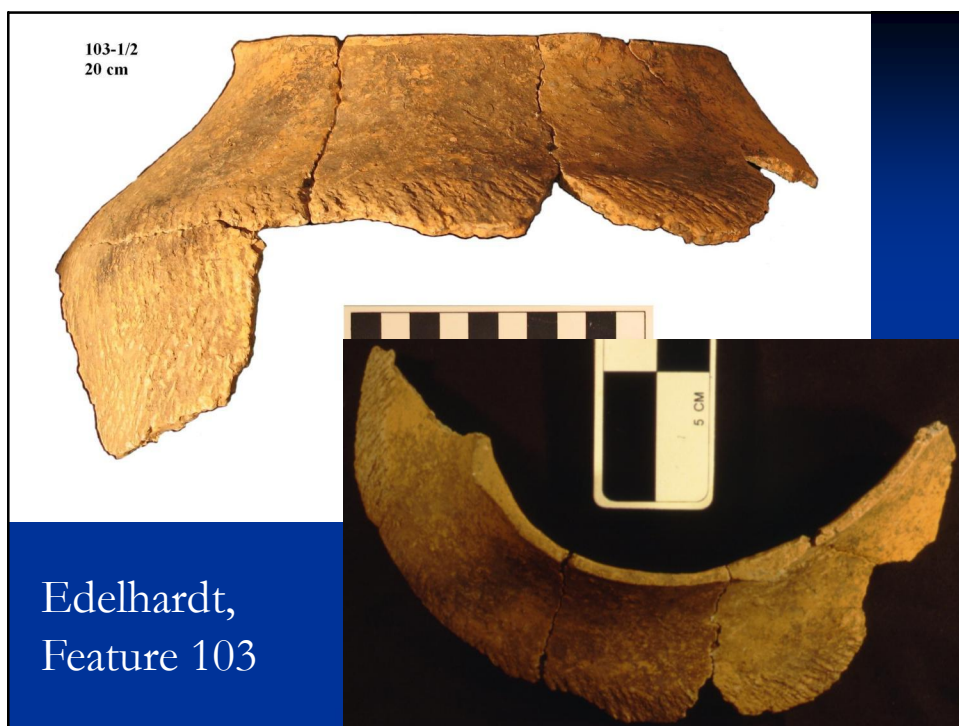
Late Woodland Patrick phase sherd
from Feature 106





Emergent Mississippian Edelhardt phase ceramics from Feature 103



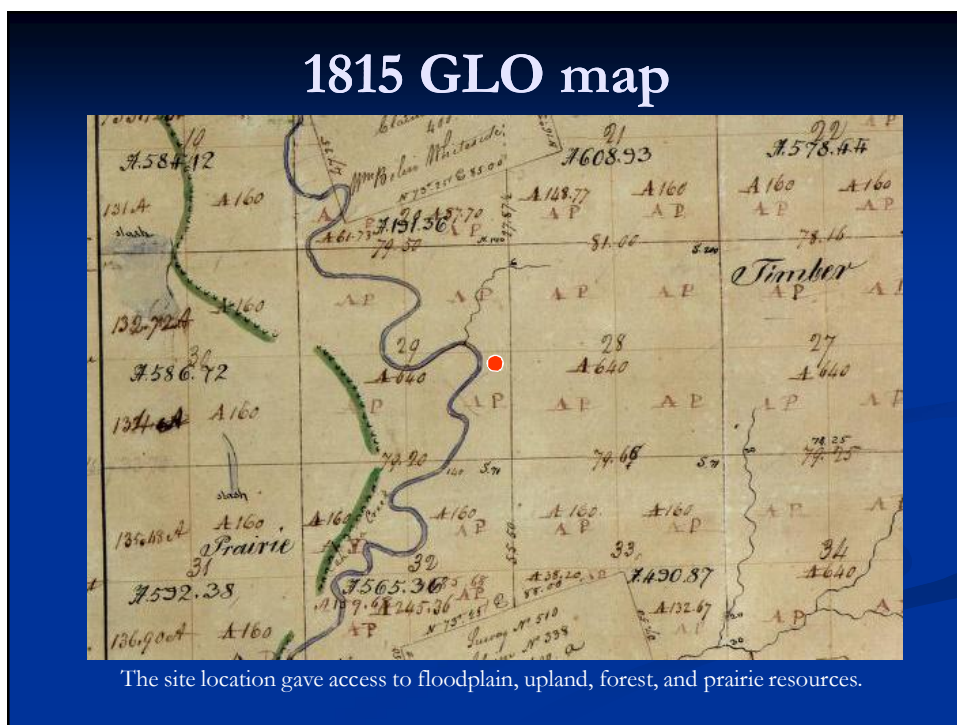


Stumpware, Feature 103



Projectile points



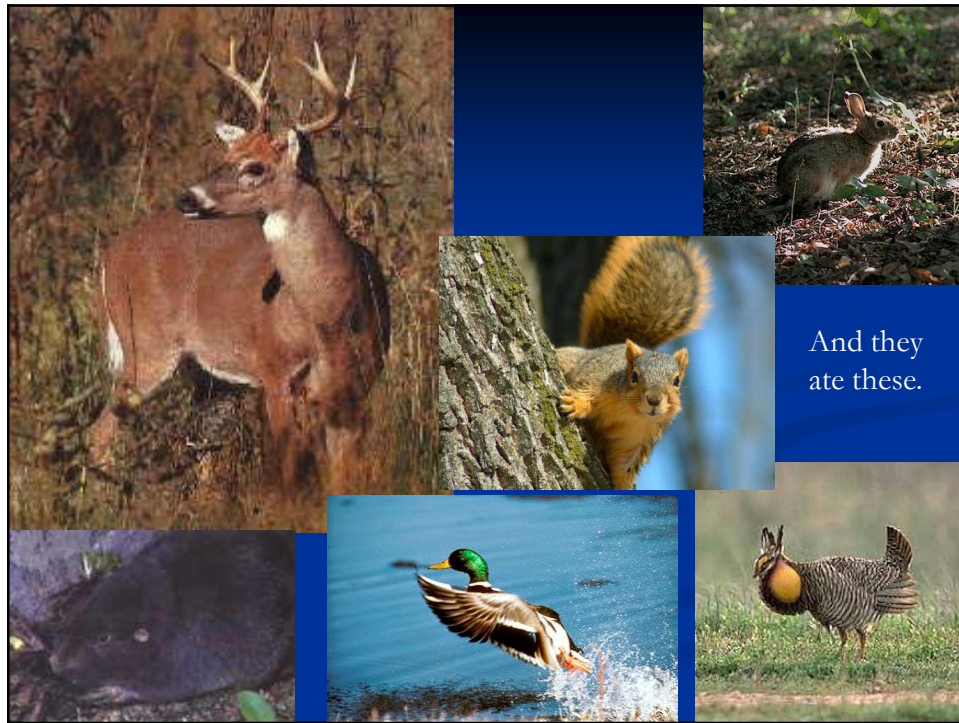




The people who lived at
AE Harmon ate lots of
little bullheads!



They also ate these.



And they
ate these.



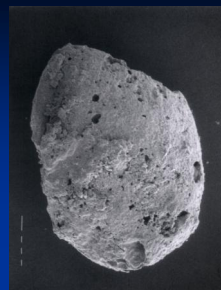
Canid bones were also
identified. It's not clear if
the dog was eaten.

Native cultigens



Chenopodium

Seeds from AE Harmon. Identified by Toshia Evans for her senior project in 2003. Photographed by Suzanne Eder.



Phalaris



Polygonum



They ate these plants.



Toshia also identified
maize, squash, and
wild beans in
Edelhardt phase trash.



Thanks and best wishes to
everyone on the 2002 crew!