

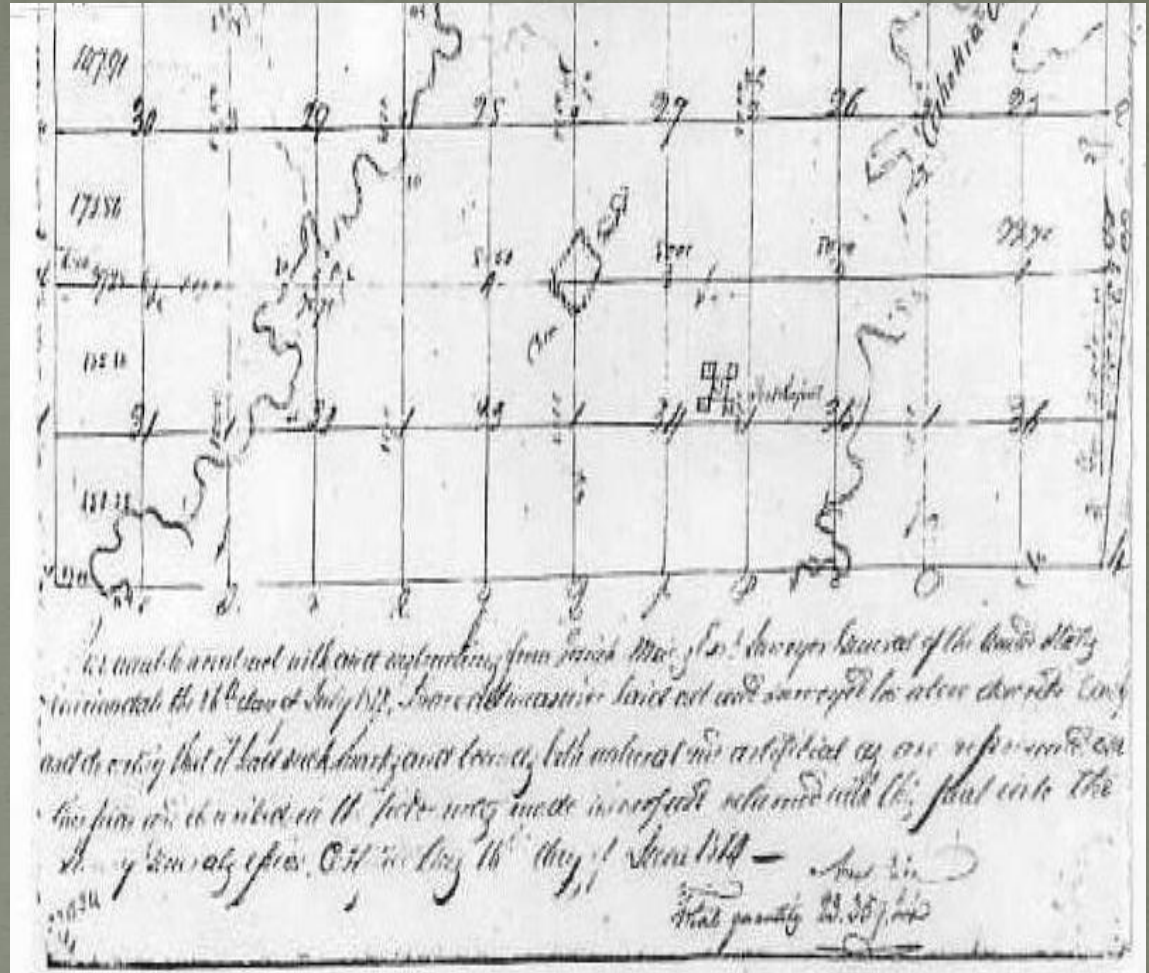
Finding Fort Russell: The Historical and Cultural Relevance of a Local Landmark, Military Stronghold and Enduring Legend

Grace Miller

April 16, 2011

Local History

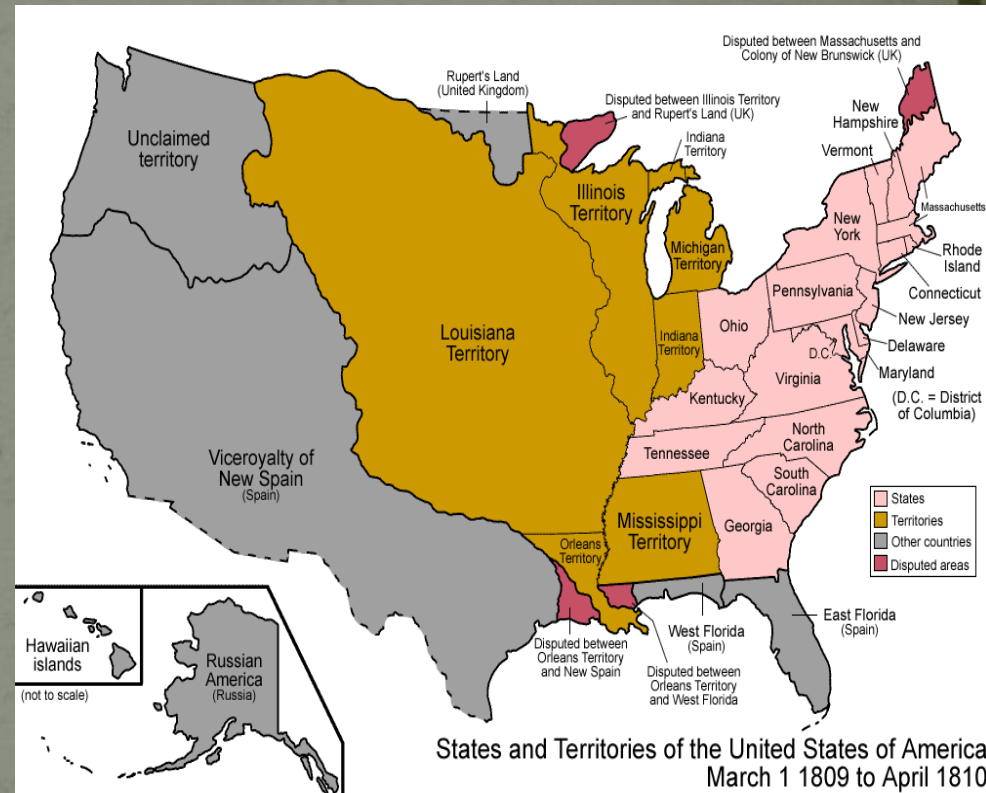
- 1802: Thomas Kirkpatrick family
- February, 1809: Territory of Illinois is established
- June, 1812- December, 1814: War of 1812
- September ,1812: Madison County is established
- October, 1812: Fort Russell is completed



1813 Survey map, courtesy of the Madison County Historical Society

War of 1812

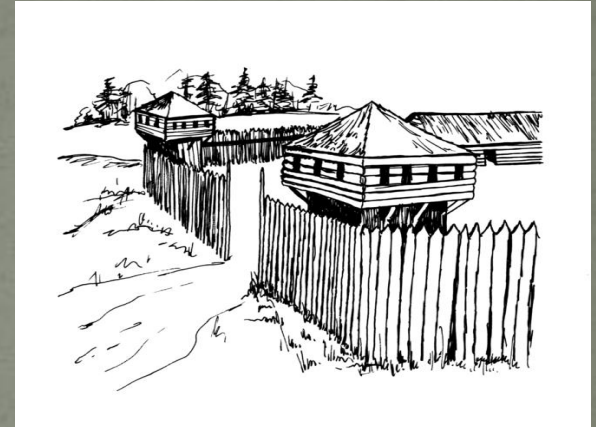
- June, 1812- America declares war against the British Empire
- Trade restrictions, American expansion, the impressment of American sailors, and British support of Native American groups
- December, 1814: Treaty of Ghent



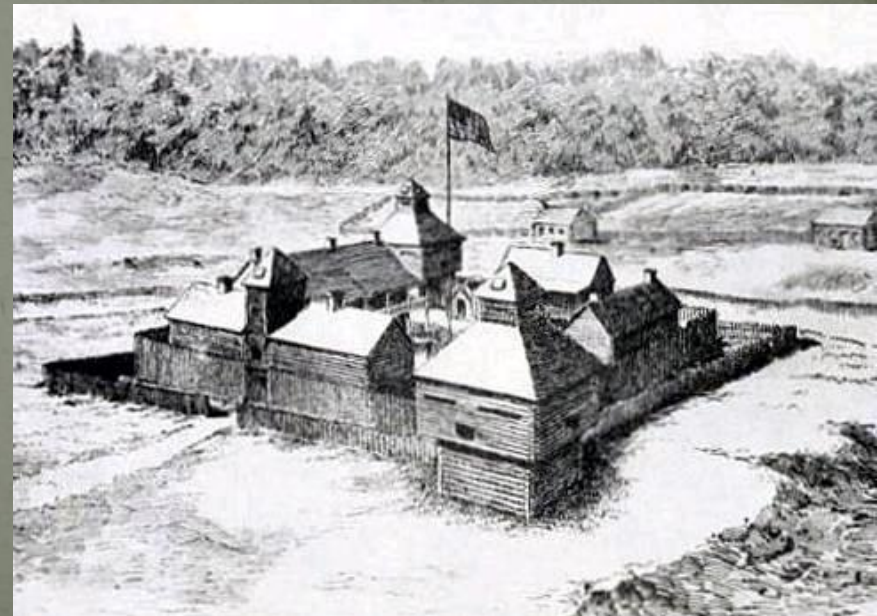
From La Chuleta Congela

Fort Russell: Military Depot

- 150 square foot stockade
- 4 block houses in a generally square shape
- Walls constructed between block houses



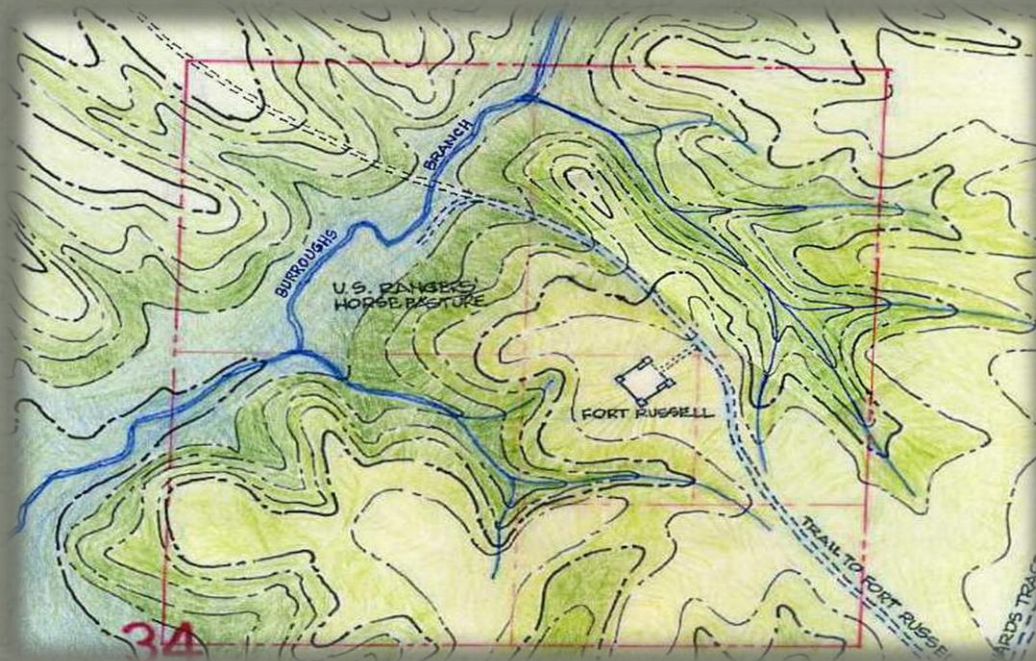
- Named for Colonel William Russell
- Home to a cavalry unit
- Central supply depot and staging area



Above: From Wikimedia Commons

Right: From "Brief History of Northwestern Illinois"

Fort Russell: Local Landmark



- Fell into disrepair
- 1912: Centennial flag pole and plaque
- 'a mile and a half north of town' located on a high point
- Two previous attempts to locate the fort

Methods

- Personal interviews
 - Dr. Sid Denny
 - Terry Norris
 - Locals
- Historical documents
 - Newspaper articles
 - Ninian Edwards' personal papers
 - Personal diaries, records, and letters
- Aerial photograph analysis
 - 1941, 2007 Aerial photos



1941 Aerial photograph of Edwardsville, IL

United States Department of State

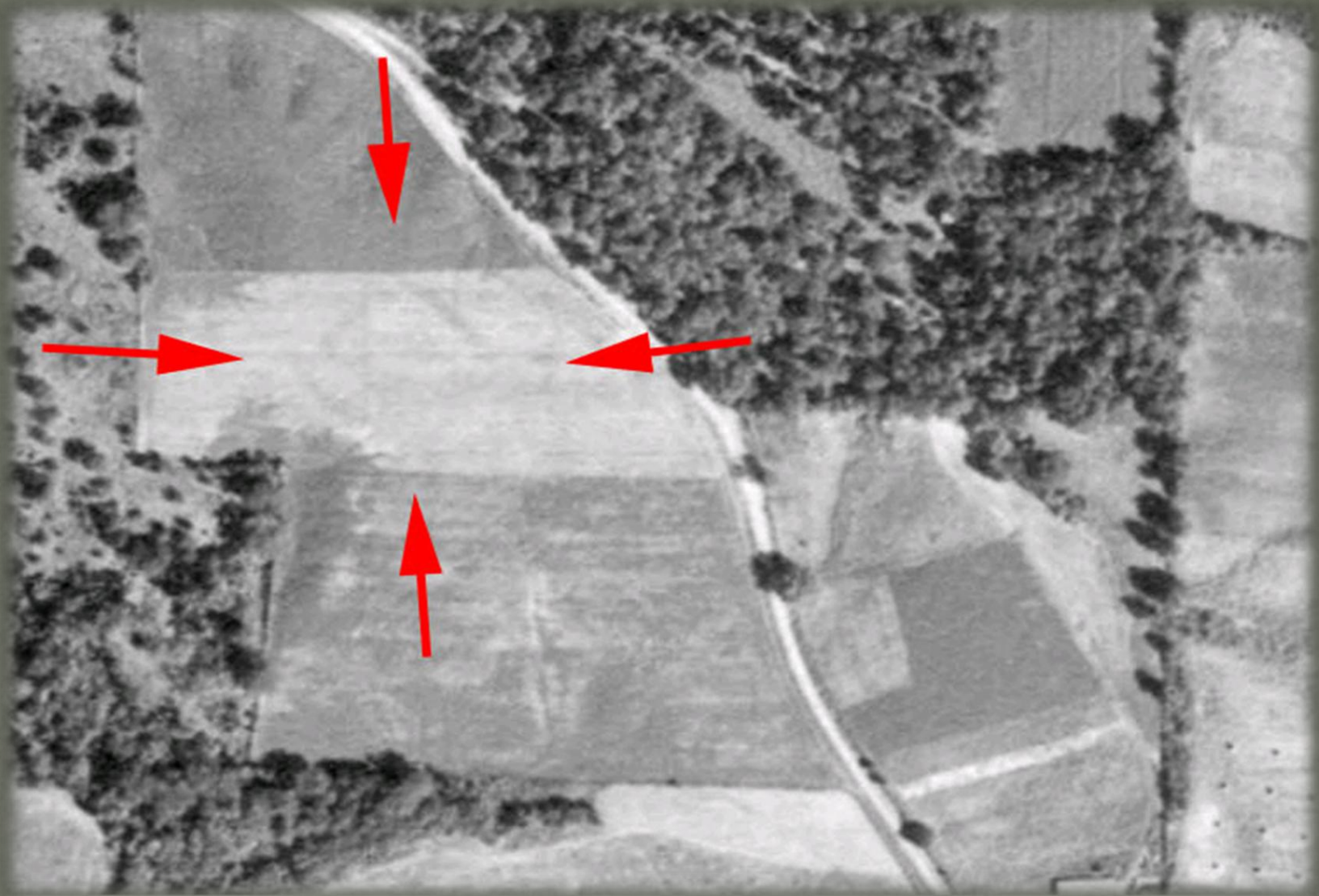


1941 Aerial photograph of Edwardsville, IL
United States Department of State



1941 Aerial photograph of Edwardsville, IL

Courtesy of Terry Norris, Army Corp of Engineers



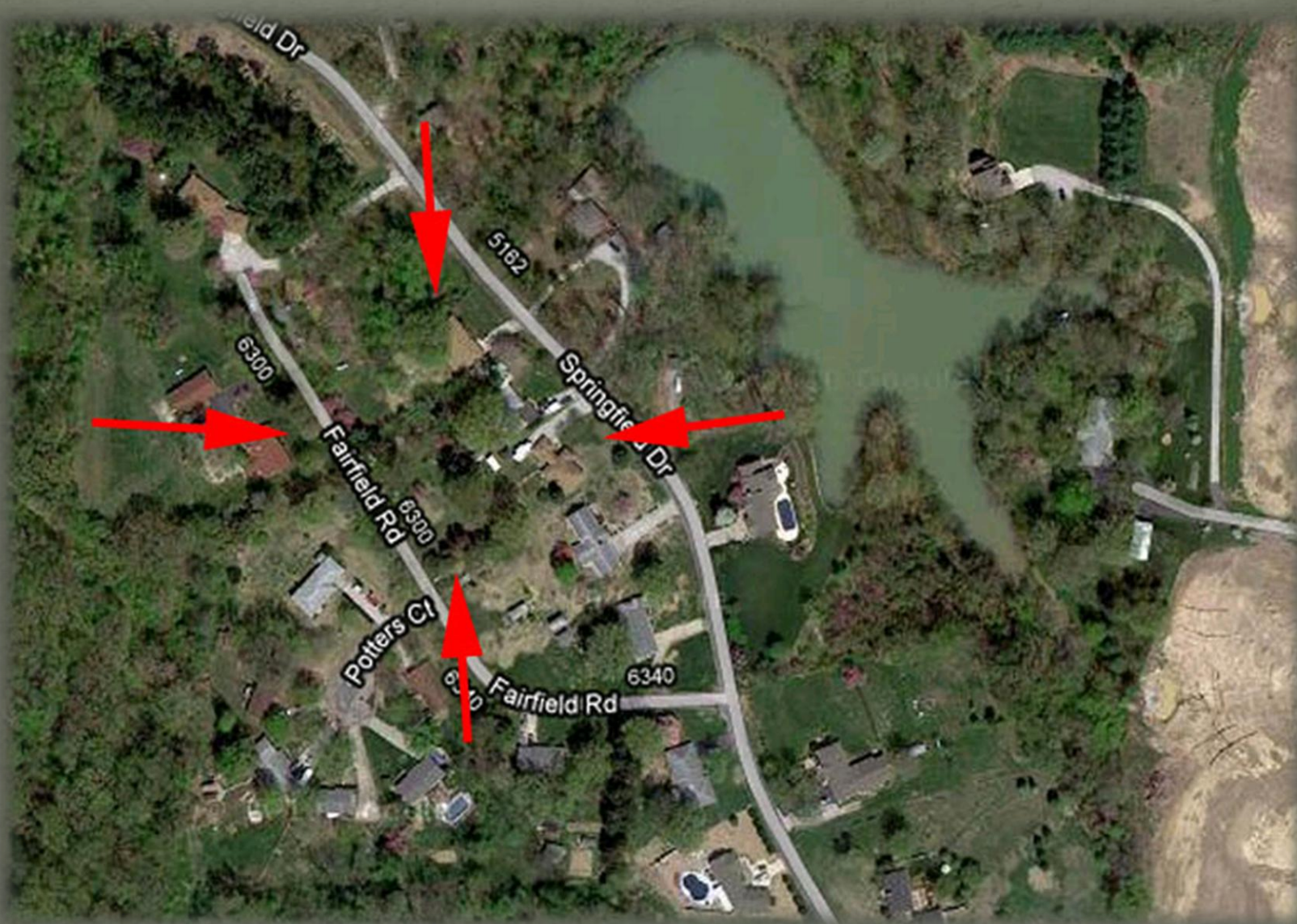
1941 Aerial photograph of Edwardsville, IL
United States Department of State



2007 Aerial photograph of Edwardsville, IL
From Terry Norris, Army Corp of Engineers



2007 Aerial photograph of Edwardsville, IL
From Terry Norris, Army Corp of Engineers



2007 Aerial photograph of Edwardsville, IL
Google Maps, Dr. Greg Vogel

What's Next?

- Madison County Historical Society/1812 Commission
 - Landowner interviews and permission
- SIUE Field School
 - Magnetometer

Acknowledgements

- Dr Greg Vogel and Dr. Julie Holt for their support and guidance.
- The Madison County Historical Society and the 1812 Commission for their invaluable help, information, and support.
- Special thanks goes to Kenneth Hanser and Terry Norris for all of their work and enthusiasm.
- My parents, my grandparents and Chris for always being there, encouraging me, and distracting me with shiny objects.