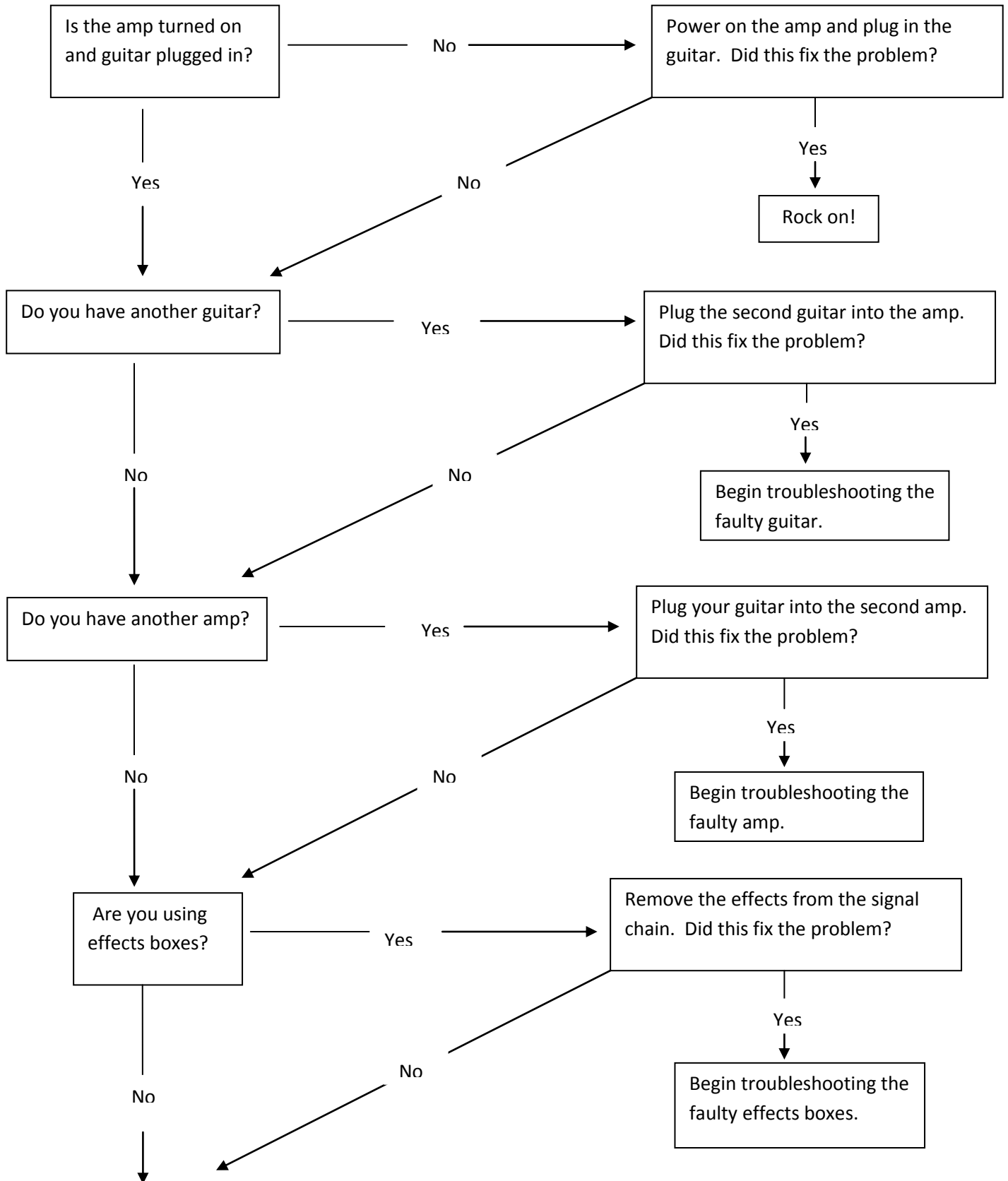


# Troubleshooting an Electric Guitar and Amp



Is the amp plugged into the speaker?

No

Connect the amp and speaker (s). Did this fix the problem?

Yes

Rock on!

No

Yes

Look on the backside of the amp. Is there a fuse? See picture:



Yes

Power off and unplug the amp. Remove the fuse to see if it is blown. If blown, replace. Did this fix the problem?

Yes

Rock on!

No

No

At this point you will need to find troubleshooting and repair instructions for your particular amp model.