

**Academic Program Review
and
Indicators of Institutional Excellence**

**Paul W. Ferguson, Ph.D.
Provost and Vice Chancellor for Academic Affairs**

**Victoria G. Scott, Ed.D.
Director of Assessment**

**Board of Trustees
Southern Illinois University**

April 9, 2008

**SOUTHERN ILLINOIS UNIVERSITY
EDWARDSVILLE**

National Indicators of Institutional Excellence

Southern Illinois University Edwardsville

Overall University Ranking

- In 2008, *U.S. News & World Report* ranked SIUE among the top 10 public master's-level universities in the Midwest region.

Scholarly Accomplishments

- SIUE faculty members achieve national recognition and distinction as evidenced by their scholarly pursuits and accomplishments. Faculty and staff obtained more than \$27 million in grants and contracts in Fiscal Year 2007 (an increase of 23% over 2006). The National Science Foundation ranks SIUE among the top 25 master's-only institutions in the U.S. in terms of the amount of research and development grant expenditures.

Senior Assignment

- The University's Senior Assignment Program, an integrative learning experience required of all seniors prior to graduation, was ranked as a national model for learning assessment by the Association of American Colleges & Universities in January 2007.
- For the third consecutive year, *U.S. News & World Report* named SIUE among America's Best Colleges in 2008 for the Senior Assignment Program.

Academic Quality Improvement Program

- SIUE was one of the first 12 institutions admitted to the Academic Quality Improvement Program (AQIP), a new and innovative accreditation strategy by the Higher Learning Commission. SIUE helped create and refine the AQIP admission process, strategy forum design, annual review, system portfolio, and systems portfolio feedback. The SIUE Systems Portfolio has been used as a model for other new AQIP institutions. In 2008, SIUE's Institutional Accreditation through the AQIP process was reaffirmed.

Freshman Applications

- Approximately 7,000 freshmen--an all-time high--applied to attend SIUE in the fall of 2007. The average ACT score for SIUE's fall 2007 freshman class was 22.5, up from 21.9 in 2003. The average ACT score in Illinois is 20.5.

Assessment

- The foundation for University-wide assessment at Southern Illinois University Edwardsville was laid in 1985, well before similar institutions in higher education considered assessment a priority. SIUE is known regionally and nationally for its development, innovation and implementation of ongoing assessment systems to support continuous quality improvement and cultivate a culture of evidence-based decision-making.

ACCREDITATIONS/ AFFILIATIONS

Indicators of Department and Program Excellence

COLLEGE OF ARTS AND SCIENCES

Accrediting Agency/ Affiliation	Year of Review/ Affiliation	Status	Next Review (Year)	Accredited/Affiliated Program/Unit
Accrediting Council on Education in Journalism and Mass Communications	2005	Accredited through 2011	2010	Baccalaureate program in Mass Communications
American Art Therapy Association	1997	Reapproved through 2011	2011	M.A. in Art Therapy
American Chemical Society	2003	Reapproved	2008	B.S. in Chemistry
Council on Social Work Education	2002	Reaccredited through 2010	2010	Baccalaureate program in Social Work
Council on Social Work Education	2006	Accredited through 2015	2015	Master's program in Social Work
National Association of Schools of Music	2000	Reaccredited through 2009	2009	Department of Music
National Association of Schools of Public Affairs and Administration	2005	Accredited through 2011	2011	Master's program in Public Administration
National Association of Schools of Theatre: Initial Accreditation	2007	Accredited through 2011	2011	All baccalaureate programs in Theater
St. John's Hospital, Springfield, IL	2007	Affiliation agreement for three years	2011	Department of Biological Sciences
St. Elizabeth's Hospital, Belleville, IL	1998	Affiliation agreement	Renewed annually	Department of Biological Sciences

Stellar Programs/Activities within the College of Arts and Sciences

- **Faculty from the College of Arts and Science received 1.8 million dollars in external grant funding for the 2006-2007 fiscal year. Faculty from the Departments of Chemistry, Biological Science, and Geography obtained the most funding for that year.**

- **Faculty from English received several national awards in poetry, as well as the Woodrow Wilson Fellowship Award**
- **The Music Department's Jazz Program is nationally recognized**
- **Faculty and alumni from the Department of Mass Communications have earned a regional Emmy for broadcast news, a Pulitzer Prize, and acclaim for a documentary on Arab representation in Hollywood film making. SIUE's student newspaper, The Alestle, which is produced by the Mass Communications Department, won a national award in Fall 2006 from the Associated Collegiate Press and College Media Advisers**

SCHOOL OF BUSINESS

Accrediting Agency/ Affiliation	Year of Review/ Affiliation	Status	Next Review (Year)	Accredited/Affiliated Program/Unit
Association to Advance Collegiate Schools of Business-International	2006	Reaccredited through 2011	2011	Baccalaureate and Master's programs in Business
Association to Advance Collegiate Schools of Business-International	2006	Reaccredited through 2011	2011	Bachelor of Science and Master of Science in Accountancy

Stellar Programs/Activities within the School of Business

- **Princeton Review named the SIUE School of Business a “Best Business School” in 2007**
- **Results on the ETS Major Field Test in Business were above the national average**
- **In 2006-2007, pass rates on CPA exams were above the national average and ranked the second highest in the state**
- **In 2006, Business faculty published (or had accepted) 3 books, 37 refereed articles, and made 25 conference presentations**
- **During Fiscal Year 2007, Business faculty and staff were awarded 16 grants totaling over \$535,000--an increase of 7% over the previous fiscal year**
- **Graduates of the Marketing Research Program have nearly a 100% placement rate by the time they finish their degrees**

SCHOOL OF DENTAL MEDICINE

Accrediting Agency/ Affiliation	Year of Review/ Affiliation	Status	Next Review (Year)	Accredited/Affiliated Program/Unit
American Dental Association Commission on Dental Accreditation	2006	Reaccredited through 2012	2012	Doctor of Dental Medicine (D.M.D.) degree program
American Dental Association Commission on Dental Accreditation	2006	Accredited through 2012	2012	Advanced Education in General Dentistry (certificate program)

Stellar Programs/Activities within the School of Dental Medicine

- **SDM received nine commendations for program quality during most recent accreditation**
- **94% national pass rate on the National Dental Board Exam**
- **Each year the school receives about 700 application for 50 openings**
- **Served more than 14,000 clients in the region with community outreach involving oral health education, screenings and preventative care**
- **Between 15-20% of the graduates pursue further graduate-level training**
- **The School and has trained more than 1,400 dentists in its 35 year history**

SCHOOL OF EDUCATION

Accrediting Agency/ Affiliation	Year of Review/ Affiliation	Status	Next Review (Year)	Accredited/Affiliated Program/Unit
Council of Academic Accreditation in Audiology and Speech-Language Pathology of the American Speech-Language-Hearing Association	2003	Reaccredited through 2011	2011	Graduate program in Speech Language Pathology
National Association of School Psychologists	2003	Approval through 2008	2008	Specialist degree in School Psychology
National Council for Accreditation of Teacher Education	2006	Reaccredited through 2014	2014	All teacher education programs (baccalaureate, master's, specialist, and doctorate)
Illinois State Board of Education	2006	Continued approval	2014	All teacher education programs

Stellar Programs/Activities within the School of Education

- **The Department of Psychology received the Council for Higher Education's Accreditation 2006 Award for Institutional Progress in Student Learning Outcomes**
- **In 2006-07, students attained a 100% pass rate on Basic Skills Test required for admittance to teacher education program, a 100% pass rate on content tests, and a 99% pass rate on the Professional Teaching Test.**
- **During the 2006-07 Academic Year, faculty in the School of Education published (or had accepted for publication) 23 books, 43 book chapters, and 103 articles**
- **Students mentored by faculty from the School of Education presented 69 research papers at regional and national conferences in the 2006-07 Academic Year**
- **The Special Education program coordinates the Grow Your Own outreach program in East St. Louis for recruiting minority special educators**

SCHOOL OF ENGINEERING

Accrediting Agency/ Affiliation	Year of Review/ Affiliation	Status	Next Review (Year)	Accredited/Affiliated Program/Unit
Accreditation Board for Engineering and Technology	2008	Electrical and Industrial Engineering programs reaccredited (Pending)	2014	Baccalaureate programs in Electrical and Industrial Engineering
Accreditation Board for Engineering and Technology	2003	Civil and Mechanical Engineering programs reaccredited	2009	Baccalaureate programs in Civil and Mechanical Engineering
Accreditation Board for Engineering and Technology	2008	Computer Engineering program accredited (pending)	2014	Baccalaureate program in Computer Engineering
Accreditation Board for Engineering and Technology	2003	Computer Science program accredited	2009	Baccalaureate program in Computer Science
American Council for Construction Education	2001	Accredited through 2011	2011	Baccalaureate program in Construction Management

Stellar Programs/Activities within the School of Engineering

- **Record of achievement in student competitions in 2007: 1st place in UGS Industrial Engineering, 1st place Highest Ultimate Load-to-Weight Ratio Construction, 2nd in Concrete Canoe Competition, 1st Place in Lightness Category in the Steel Bridge Competition, 5th place in Robotics Competition**
- **Research funding obtained by faculty increased by 60%, in 2007, for a total of \$1.6 million**

SCHOOL OF NURSING

Accrediting Agency/ Affiliation	Year of Review/ Affiliation	Status	Next Review (Year)	Accredited/Affiliated Program/Unit
Council on Accreditation of Nurse Anesthesia Educational Programs	2002	Reaccredited through 2010	2010	Nurse Anesthesia graduate program
Commission on Collegiate Nursing Education	1999	Accredited through 2009	2008	Baccalaureate and Master's programs

Stellar Programs/Activities within the School of Nursing

- **SNAP (Student Nurse Achievement Program) for recruiting minority nurses**
- **Growth from 350 to 750 students in the last four years to meet the work force needs of southern Illinois**
- **On average, over the last several years pass rates on NCLEX board scores is at or above the national average**
- **The School of Nursing (Dr. Louise Flick) was awarded \$4 million of a \$26 million grant from the National Institutes of Health to participate in the National Children's Study**

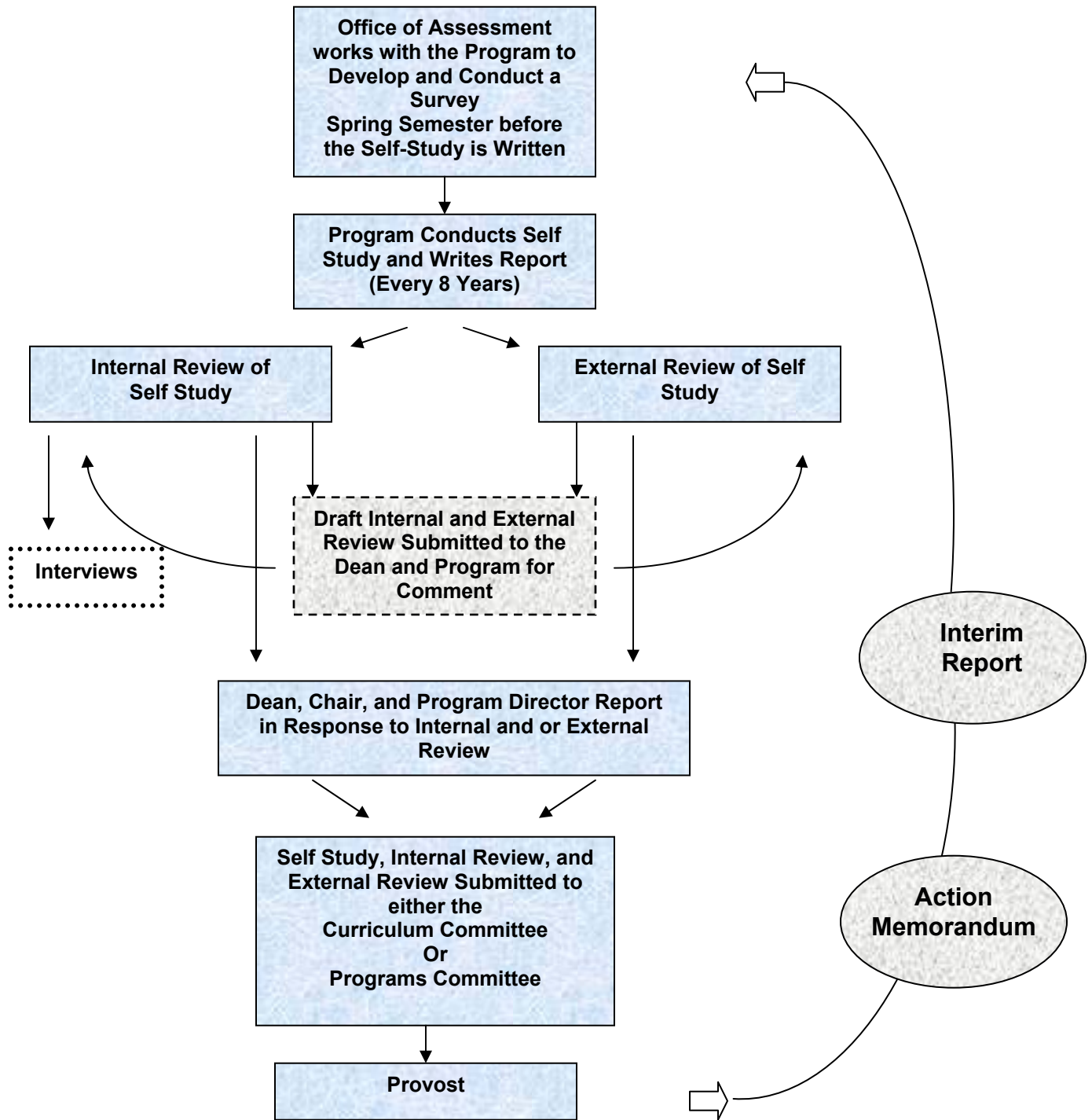
SCHOOL OF PHARMACY

Accrediting Agency/ Affiliation	Year of Review/ Affiliation	Status	Next Review (Year)	Accredited/Affiliated Program/Unit
Accreditation Council for Pharmacy Education	2006	Candidate	2008	Doctor of Pharmacy

Stellar Programs/Activities within the School of Pharmacy

- **The Pharmacy program is on track for full accreditation in 2009 (Candidate status)**
- **Faculty received research recognition and funding from the National Science Foundation and American Council on Pharmaceutical Education**
- **Pharmacy students recognized nationally for patient counseling excellence**
- **The Drug and Wellness Center provides service to the region by providing answers to common health questions**

Program Review Flow Chart



**Summary of Academic Program Review
Undergraduate Programs**

**Office of the Provost
Office of Assessment**

Undergraduate Programs	In Good Standing	Flagged for Priority Review	Enrollment Suspended	Next Review Date
Arts & Sciences				
Anthropology		✓		2010, 2013
Art & Design	✓			2012
Biology	✓			2009
Chemistry	✓			2009
Criminal Justice	✓			2012
Economics				2014
English	✓			2010
Foreign Languages	✓			2014
Geography	✓			2011
History	✓			2011
Liberal Studies	✓			2010
Mass Comm	✓			2014
Math & Stat	✓			2009
Music	✓			2010
Philosophy		✓		*2011, 2014
Physics		✓		*2011, 2014
Political Science	✓			2014
Sociology	✓			2012
Social Work	✓			2012
Speech Comm	✓			2010
Theater & Dance	✓			2012
Business School				
Accounting	✓			2015
Business Administration	✓			2015
Business Economics/Finance	✓			2015
CMIS	✓			2015

Education				
Elementary Education	✓			2013
Early Childhood Education	✓			2013
Exercise and Wellness & Community Health	✓			2013
Health Education	✓			2013
Physical Education & Teacher Education	✓			2013
Psychology	✓			2011
Secondary Education-?	✓			2013
Special Education	✓			2013
Speech Pathology Audiology	✓			2011
Engineering				
Electrical and Computer Engineering	✓			2016
Civil Engineering	✓			2016
Computer Science	✓			2016
Construction	✓			2016
Mechanical Engineering	✓			2016
Industrial & Manufacturing	✓			2016
Nursing	✓			2014
*indicates programs on Priority Review Status that will go through a full review early				

**Summary of Academic Program Review
Graduate Programs**

**Office of the Provost
Office of Assessment**

Graduate Programs	In Good Standing	Flagged for Priority Review	Enrollment Suspended	Next Review Date
Arts & Sciences				
Art	✓			2012
Art Therapy Counseling	✓			2012
Biology	✓			2009
Bio Tech Management	■			2009
Chemistry	✓			2009
English	✓			2010
Environmental Science	✓			2009
Environmental Science Management	■			2009
Geography	✓			2011
History	✓			2011
Mass Comm	✓			2014
Math & Stat	✓			2009
Music	✓			2010
PAPA	✓			2010
Physics		✓		2009, 2011
Sociology	✓			2012
Social Work	✓			2012
Speech Comm	✓			2010
Business School				
Business	✓			2015
Economics	✓			2015
Business Administration	✓			2015
Accountancy	✓			2015
CMIS	✓			2015
Marketing Research	✓			2015

Education				
Kinesiology	✓			2013
Educational Administration	✓			2013
Instructional Technology	✓			2013
Literacy Education	✓			
Learning, Culture, & Society	■			2014
Psychology	✓			2011
School Psychology	✓			2011
Secondary Education	✓			2013
Elementary Education	✓			2013
Special Education	✓			2013
Speech & Lang. Pathology	✓			2011
Masters of Arts in Teaching	■			2010
Engineering				
Civil Engineering	✓			2016
Computer Science	✓			2016
Electrical Engineering	✓			2016
Mechanical Engineering	✓			2016
Nursing				
Nursing	✓			2014
Nurse Educator	✓			2014
Family Nurse Practitioner	✓			2014
Health Care and Nursing Admin	✓			2014
Nurse Anesthesia	✓			2014
■ New program that hasn't gone through program review yet.				