



Sigma Theta Tau International Epsilon Eta Explorer

Official Publication of Epsilon Eta Chapter, Sigma Theta Tau International, Southern Illinois University Edwardsville

Volume 25, No. 1

January 2007

Chapter Officers

President

Dr. Kay Gaehle
618-650-3976
kgaehle@siue.edu

Vice President

Ginger Behrhorst, APN
618-650-5873
vpetrof@siue.edu

President-Elect and Publicity

Dr. Rhonda Comrie
618-650-3935
rcomrie@siue.edu

Secretary

Amelia Siatkowski, MS
618-650-5964
asiatko@siue.edu

Treasurer

Dr. Rick Yakimo
618-650-5024
ryakimo@siue.edu

Eligibility Counselor

Jean Auffarth, MS
618-650-3938
jauffar@siue.edu

Committee Chairs

Heritage/Archives

Rhoda Headley, APN
618-650-5942
rheadle@siue.edu

Leadership Succession

Dr. Kathy Ketchum
618-650-5482
kketchu@siue.edu

Awards Committee

Dr. Arleen Fearing
618-650-3999
afearin@siue.edu

President's Message—Dr. Kay Gaehle

President's Message

**Hope all of you are enjoying this wonderful
"winter weather" we are having!!!**

The last few months have been busy for our officers and members. In October 2005 several members attended the annual joint meeting of St. Louis area Sigma Theta Tau chapters hosted by Nu Chi. We enjoyed a wonderful dinner and presentation on the Doctorate of Nursing Practice role. It was a very enjoyable and informative evening.

I represented the chapter at the Chapter Leader Academy in Indianapolis in September 2006. I attended several sessions which reinforced our strategic plan and direction for this year. During the meeting I talked to several officers of other chapters in our region to determine their interest in assisting our chapter to raise money to dig wells in a third world country. This would then be a project that would impact health of populations on an international level.

To date only one other chapter seems interested in possibly joining Epsilon Eta's efforts.

Thank you to all of the officers and members who have assisted in the planning and implementation of the following projects since the fall newsletter:

1. Selection of recipients of Publication Awards and Research Grants..
2. Planning for the Annual Business meeting: Date February 22, 2007
3. Planning for the Spring Induction: April 20, 2007
4. Develop a slate of officers to elect at the business meeting
5. Prepare for overseeing membership eligibility

Mark your calendars for the Annual Meeting and Spring Induction. Member involvement gives life to an organization. Please be involved.

STTI Annual Business Meeting and Spring Induction

All members of Epsilon Eta are invited and encouraged to attend the Annual Dinner Business meeting on Thursday, February 22, 2007. The meeting will be held at the Four Points Sheraton Conference Center, 319 Fountain Parkway, Fairview Heights, IL. The speaker will be Dr. Pam Newland. Her topic is "Impact of symptoms on quality of life in women with relapsing-remitting multiple sclerosis and healthy women." The cost for the dinner will be \$30 per plate with these selections: Chicken Mudega or Pork Chops. Reservations are due by February 19, so hurry to make your intention to attend known!

The annual induction of new members, along with a dinner meeting, will be held on Friday, April 20, 2007 at 6 p.m., also at the Four Points Sheraton Conference Center. Dr. Ruth Beckmann Murray, EdD, APRN, BC, N-NAP, FAAN, Professor Emerita, Saint Louis University School of Nursing will present "The Commitment to Service in the Nursing Profession." The cost for the induction dinner is \$30 with dinner selections of Tarragon Chicken or Pork Loin.

To register for either event: E-mail your request to attend, along with dinner selections to Ginger Behrhorst at vpetrof@siue.edu or send your request, along with payment, to V. Behrhorst, Box 1066, Southern Illinois University Edwardsville, Edwardsville, IL 62026.

Put on your Walking Shoes!



In June 2006 over thirty Epsilon Eta members or members of their families joined 60,000+ walkers in downtown St. Louis to raise money for breast cancer research. This year's date for the St. Louis Komen Race for the Cure is June 16, 2007.

If you are ready to race and willing to help with the "footwork", contact Kay Gaehle at 618-650-3976 or kgaehle@siue.edu. Step up as an active member of Epsilon Eta by helping organize and carry out our chapter's involvement in the Race for the Cure!

The Top 10 Reasons to Get Connected as an Active Epsilon Eta Member

"STTI seeks to make a difference in the lives of others through our service and professional networks."

10. It looks good on your resume.
9. Your dues will be worth the cost.
8. Maybe there will be good food to eat.
7. You will learn about the Honor Society.
6. You might receive recognition for your service.
5. You can network with other members—many nice people!
4. You will personally benefit and grow through service.
3. You will discover opportunities where you can make a difference.
2. You might find it so enjoyable that you volunteer at the national level!
1. You will contribute to the future of the nursing profession and the lives of people everywhere!

Water Wells to locate clean water to drink - Fund Raising Continues!

As you read in the President's Report on page 1, our efforts to provide funding for a needed source of clean water for people in third world countries continues!

The Board of Epsilon Eta recognized that the high cost of digging a well might be prohibitive if our chapter continues this endeavor alone. In an effort to make this project more feasible,

President Gaehle approached our regional coordinator for assistance. Other chapters in our region were asked for financial assistance, making this a regional project. Only one chapter has expressed an interest so far. However, our commitment stands strong!

How can you help? We are having success selling bottles of cold water and other

snack items at the School of Nursing. We have cleared \$400! Should you be interested in a similar endeavor in your workplace or community, contact us for water bottle labels or fliers to distribute.

Fundraising was launched on October 3 at the SIUE – STTI Martha Welch Research Day event. Join the efforts! Call for ways to become involved!



For information contact
President Kay Gaehle or
President-Elect Rhonda Comrie

Help Identify Nurse Leader Candidates

As Epsilon Eta begins to collect potential members for the upcoming induction ceremony in April 2007, the Eligibility Counselors traditionally look to identify which SIUE undergraduate and graduate students or faculty members ought to be invited to join the organization. While the board members are able to identify many excellent professional nurses in practice, your help to identify others would be greatly appreciated. Do you know of a nurse leader in your own agency?

What a great way to show your appreciation for other nurses!

Nurse Leader Candidates must be:

- legally recognized to practice nursing in his/her country;
 - minimum of a baccalaureate degree or the equivalent in any field;
- demonstrated achievement in nursing.

Send the name of your colleague who fits this description to Jean Auffarth, Eligibility Chair, Box 1066
SIUE School of Nursing
Edwardsville, IL 62026
Email: jauffar@siue.edu

Upcoming events

Annual Meeting at the Four Points at Sheraton, Fairview Heights IL
Feb 22, 2007
6 p.m.
Reservations asap!

Annual Meeting and New Member Induction at Four Points at Sheraton, Fairview Heights IL
April 20, 2007
7 p.m.
Make reservations by April 16

Members Present Research at Pi Pi Chapter, Blessing-Rieman College

On November 10, 2006, seven members of Epsilon Eta Chapter traveled to Blessing-Rieman College of Nursing in Quincy, Il to attend their 13th Annual Research Day: A Day of Sharing Research. The keynote speaker for the event was Beatrice Kalish, PhD, RN, FAAN from the University of Michigan. The address was titled "Enhancing Nursing Staff Teamwork and Engagement." The speech was based on her current research, designed to help staff nurses develop team spirit and improve the unit culture so that team work would be maximized. Dr. Kalish provided a second presentation titled "Information Processing Styles of Nurses & Nurse Managers." The topic identified the "I-Opt" a model with four distinct styles that people use to approach problems, consider alternatives, or take action.



Epsilon Eta members presented their research or projects:

Above: Marge Baier, PhD, RN and Sharon Grider, MS, RN stand next to their poster: "A Pictorial Presentation of the SIUE School of Nursing."

Far left: Ann Popkess, MS, RN presented her beginning dissertation research project, "Are Nursing Students Engaged: An Analysis of Baccalaureate Students' Responses to the National Survey of Student Engagement."

Left: Kathy Ketchum, PhD, RN, presented details on "Implementation of PDA Technology into an Undergraduate Curriculum."



SCHOLARSHIP AND AWARDS NOMINATIONS

Each year the Scholarship and Awards Committee of the Epsilon Eta Chapter of Sigma Theta Tau presents several awards at the annual Induction Ceremony. The Induction Ceremony will be held on Friday, April 20, 2007.

Nominations will be accepted until April 2, 2007. Nomination forms can be obtained from Christina Daniels, AH 2340, SIUE, School of Nursing, Box 1066, Edwardsville, IL 62026. Completed nomination forms and supporting materials should be sent to Arleen Fearing, Room AH 2329 at SIUE, School of Nursing, no later than April 2, 2007.

The following is a listing of the 2007 awards and the established criteria for each award:

Betty Temple Mills Undergraduate Student Award for Academic Excellence

One award is given annually consisting of a certificate and \$50.00. The award is open to any undergraduate student who has been inducted as a chapter member and currently is in Semester 7 or 8 in the School of Nursing at SIUE. Criteria which must be met are:

1. Current Sigma Theta Tau, Epsilon Eta Chapter member.
2. Application for the award was initiated by the student or a Sigma Theta Tau member.
3. Two letters of support from SIUE nursing faculty members.

Selection of the awardee will be based on completed application received by the deadline, the cumulative GPA and demonstration of outstanding performance in the area of clinical, research, and/or leadership.

Graduate Student Merit Award

One award is given annually consisting of a Certificate of Recognition and \$100.00. The award is open to any chapter member who is currently a student admitted to the Graduate Program of the School of Nursing at SIUE. Criteria which must be met are:

1. Current Sigma Theta Tau, Epsilon Eta Chapter member.
2. Application for the award was initiated by the student or a Sigma Theta Tau member.
3. One letter of support from a graduate nursing faculty member in the student's area of specialization.
4. One letter of support from either the candidate's employing agency, a graduate faculty member from another school at SIUE, or a graduate nursing faculty member outside the candidate's area of specialization.
5. Other evidence of merit, e.g., demonstrated superior nursing involvement (to be chosen and submitted by the candidate).

Excellence in Clinical Nursing Practice Award

One annual Award for Excellence in Clinical Nursing Practice of \$100.00 is presented to a current member of the Epsilon Eta Chapter who is judged best in meeting the established criteria listed below. Nominations are invited and should include: name, address, telephone number of nominee, and a summary paragraph focusing on the nominee's contributions and accomplishment with respect to the award criteria. The nominator should also include their own name, address, and phone number. Award criteria include:

1. Demonstrates breadth of knowledge in the area of clinical practice.
2. Develops creative approaches to nursing practice that contribute to quality patient care.
3. Possesses clinical expertise.
4. Serves as a mentor/preceptor that inspires peers' practice of nursing.
5. Enhances the image of nursing through nursing practice.
6. Participates in community affairs and professional organizations that affect nursing practice.

Writing for Publication Award

The Epsilon Eta Chapter encourages its members to write for publication. With that in mind, we have established this competitive annual award. All members – students, graduates, community leaders and faculty – are invited to prepare an original and previously unpublished manuscript, to be submitted simultaneously to our Committee and to an appropriate professional journal. A single Award will be given to previously unpublished authors. Winner of the award will receive a Certificate of Recognition and \$100. (Multiple authors of award winning manuscript will share the \$100 cash award)

GUIDELINES

1. The manuscript may be the project of single or multiple authors. The primary (1st author) must be their first publication.
2. The subject of the manuscript must be relative to professional nursing.
3. The format and length should be in accordance with the journal to which the manuscript has been sent.
4. A cover letter and 3 copies of the manuscript should be sent by the due date specified above.

The author(s) name(s) should not appear on the manuscript itself, thereby maintaining anonymity during the review process. A board of reviewers made up of members from the Epsilon Eta Chapter and the Scholarship and Awards Committee will judge the manuscripts on the following criteria:

1. Writing style.
2. Creativity and originality.
3. Timeliness of content.
4. Appropriateness of references.
5. Potential value to nursing literature.

Nursing Scholarship through Research and Presentations

Congratulations to the following members who were successful in pursuits for nursing scholarship. Note that some accomplishments are in the form of publications to nursing journals.

Kay Gaehle, PhD, RN (2006) Received a \$10,000 fellowship from the Illinois Board of Higher Education to increase knowledge of oncology nursing.

She was accepted to attend the Oncology Nursing Society Cancer Genetics course in Pittsburgh, PA in March 2007. This required a competitive application to attend. The award provides up to \$1200.00 per attendee.

Kelly, K. (2007). Power, politics, and influence. In P. Yoder-Wise (Ed.), *Leading and managing in nursing* (4th ed., pp. 169-187). St. Louis: Mosby.

Ketchum, K.M., Behm, K., Johnson, C., Vandever, J., Rippetto, F. (October, 2006). Implementation of PDAs with faculty and undergraduate nursing students. Paper presentation at Southern Illinois University Edwardsville, Edwardsville, IL

Ketchum, K.M., Behm, K., Johnson, C., Vandever, J., Rippetto, F. (November, 2006). Implementation of PDA technology into a nursing curriculum. Paper presentation at Blessing-Rieman College of Nursing, Quincy, IL.

Ketchum, K.M., Behm, K., Johnson, C., Vandever, J., Rippetto, F. (March, 2007). Podcasting, video, and PDAs. What? No IPOD!! Paper presentation at Creative Teaching in Nursing Education, Memphis, TN.

Kathy Ketchum, PhD, RN also serves as the Nursing Research Scientist at DePaul Health Center in a collaborative practice role.

Pam Newland earned a PhD in Nursing from the Sinclair School of Nursing—University of Missouri-Columbia, MO Her dissertation was titled "*Impact of Symptoms on Quality of Life in Women with Relapsing-Remitting Multiple Sclerosis and Healthy Women.*"

Dr. Rick Yakimo will present a paper at the International Society of Psychiatric-Mental Health Nurses Conference in Montreal in April 2007. Title: The Psychiatric Consultation Liaison Nursing Staff Satisfaction Survey.

Dr. Yakimo serves as the Nursing Research Scientist Liaison at Memorial Hospital in Belleville, IL.

Scholarly Accomplishments includes information submitted by faculty at SIUE School of Nursing. *All members* are invited to submit information for future newsletters. Send your information *now* to Rhonda Comrie, President-elect and editor of the newsletter. E-mail to rcomrie@siue.edu

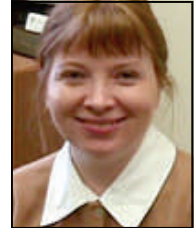
Nominees for Epsilon Eta Offices

Nominees for President-elect

Jerrica Ampadu, MS, RN, graduated from SIUE with both her undergraduate and masters' degrees. Her specialty areas are medical-surgical nursing and trauma nursing. She is pursuing her PhD in Nursing at the University of Hawaii at Manoa.



Pam Newland, PhD, RN has been on the nursing faculty at SIUE for several years. She teaches in neurologic nursing. Dr. Newland recently completed her PhD in Nursing at the University of Missouri-Columbia.

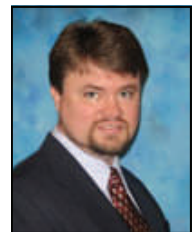


Nominees for Secretary

Rhoda Headley, MS, APRN, teaches in the nurse practitioner programs in the School of Nursing. She currently is serving as Heritage Committee Chair and has held other offices for Epsilon Eta Chapter.

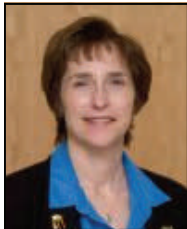


Frank Lyerla, MS, RN, graduated from SIUE with both of his degrees. He is currently enrolled in a PhD in nursing program at St. Louis University, focusing on nursing informatics. He served as President of Epsilon Eta from 2003-2005.



Leadership Succession Nominees

Rosanne Griggs, PhD, APRN, teaches in the nurse practitioner programs in the School of Nursing. She has served in other offices for Epsilon Eta Chapter. In addition to working as an FNP, her specialty areas include critical and emergency care nursing.



Karen Kelly, EdD, RN is a charter member of Epsilon Eta Chapter. Her specialty area is nursing administration. Currently she is on the task force for the renewal of the IL Nurse Practice Act. Her three degrees, BS, MS and EdD are from SIUE.



Governance Committee Nominees

Marge Baier, PhD, RN teaches specializes in psychiatric nursing and nursing research. She has a special interest in historical research. Dr. Baier has served as past president of Epsilon Eta among other offices she has held



Gladys Mabunda, PhD, RN teaches public health nursing. Her nursing specialization includes her work among African refugee and immigrant women and HIV and women in South Africa, her native country.



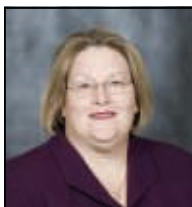
Melissa Berendson, BS, RN joined the school of nursing this fall as a psychomotor lab assistant. A 2004 SIUE grad, she specializes in critical care and is pursuing her nursing masters at SIUE.



Amelia Siatkowski, MS, RN earned her BS and MS degrees at SIUE School of Nursing. She is working on her PhD at St. Louis U. teaches acute care adult nursing. She previously held the position as secretary in Epsilon Eta.



Kay Gaehle, PhD, RN is the current president of Epsilon Eta. She teaches medical-surgical nursing and nursing research in the School. Her interest is in oncology nursing research and nursing education practices.



Kim White, PhD, RN teaches public health nursing. Her specialty areas are lead poisoning and sexually transmitted diseases. Dr. White has held prior office positions for Epsilon Eta Chapter.



Official Ballot

OFFICIAL BALLOT – Sigma Theta Tau Epsilon Eta chapter- 2007-2009

Nominees: All elected positions assume responsibility for their respective offices May 2007. Circle the name(s) of your candidate(s) of choice. Candidates are listed in alphabetical order, by office.

President-Elect – This person succeeds the president at the end of the term of office and promotes the purposes of the Honor Society. It is a two year position, followed by the presidency for two years.

VOTE FOR ONE:

Jerrica Ampadu

Pam Newland

Secretary - This person will be responsible for preparing and distributing meetings and correspondence.

VOTE FOR ONE:

Rhoda Headley

Frank Lyerla

Leadership Succession – This committee consists of at least 3 elected members who develop organizational members in leadership roles, mentor members in leadership positions, and select nominees and prepare ballots. There is one position open.

VOTE FOR ONE:

Rosanne Griggs

Karen Kelly

Governance Committee – This committee is responsible for overseeing bylaws compliance and overseeing member and chapter eligibility issues. There are three positions open.

VOTE FOR THREE:

Marjorie Baier

Gladys Mabunda

Melissa Berendson

Amelia Siatkowski

Kay Gaehle

Kim White

RETURN THIS BALLOT to Kathy Ketchum, SIUE School of Nursing, Box 1066 Alumni Hall Edwardsville, IL 62025 - 1066 no later than Monday, February 19th at 4pm. Ballots will also be available at the Annual Meeting on February 22, with the tally of all votes completed that night. For questions, contact Dr. Ketchum at kketchu@siue.edu



**Official Publication of
Epsilon Eta Chapter, Sigma**

Epsilon Eta Chapter
School of Nursing SIUE
Edwardsville Illinois 62026-1066
Return Address Requested

E-mail: kgaehle@siue.edu

Check out the Epsilon Eta Web
page at [http://www.siue.edu/
NURSING/STT/index.htm](http://www.siue.edu/NURSING/STT/index.htm)
The International Website is
<http://www.nursingsociety.org/>

The Epsilon Eta Chapter of Sigma Theta Tau International was chartered in 1980 at SIUE School of Nursing. It is open to nursing students who meet established academic and professional criteria both at graduate and undergraduate levels and to community nursing leaders.

**Honor Society:
A group established
that recognizes
colleagues' academic
or/or professional
achievements**

Did you know that there are Continuing Education opportunities on the STTI website? Some of the newest opportunities cover type 2 diabetes in children, transforming organizations to support evidence based practice, and weapons of mass destruction and disaster preparedness.