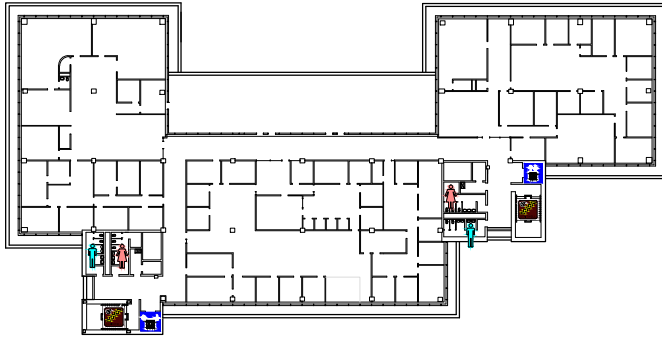
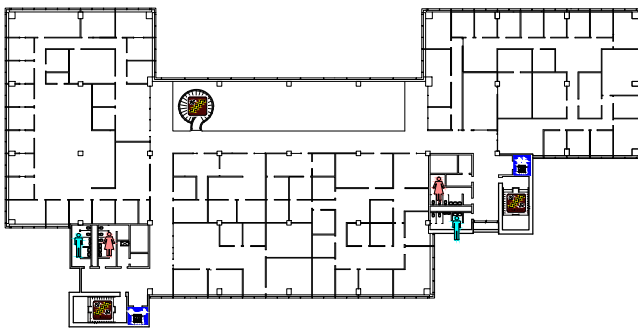


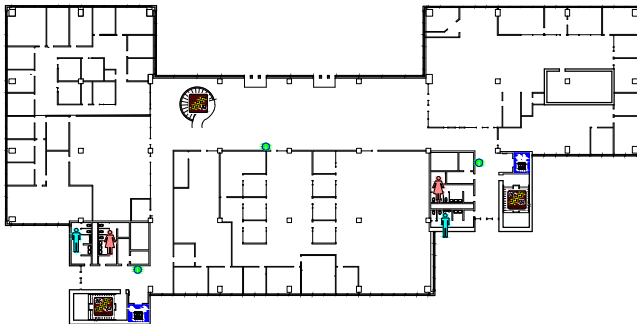
RENDLEMAN HALL



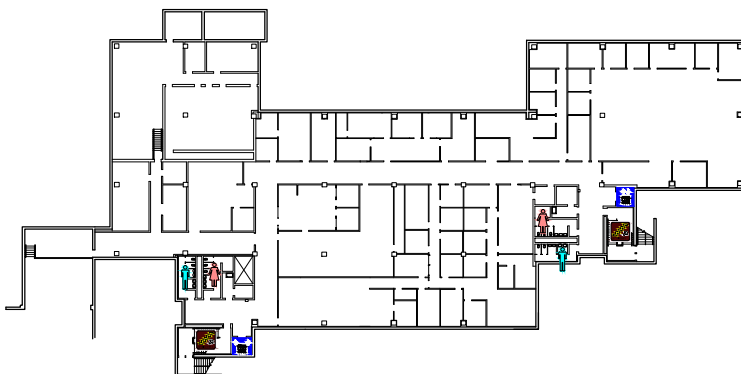
3rd FLOOR
0' 10' 20' 30' 40' 50'



2nd FLOOR
0' 10' 20' 30' 40' 50'



1st FLOOR
0' 10' 20' 30' 40' 50'



LOWER LEVEL
0' 10' 20' 30' 40' 50'

3rd FLOOR

| | |
|----------------------------------|------|
| HUMAN RESOURCES | 3210 |
| INSTITUTIONAL COMPLIANCE | 3306 |
| INSTITUTIONAL RESEARCH & STUDIES | 3202 |
| OFFICE OF CHANCELLOR | 3316 |
| PROVOST | 3102 |

2nd FLOOR

| | |
|---------------------------------|------|
| MARKETING & COMMUNICATIONS | 2105 |
| ADMISSIONS | 2120 |
| VICE CHANC. FOR ADMINISTRATION | 2228 |
| STUDENT FINANCIAL AID | 2308 |
| STUDENT EMPLOYMENT | 2221 |
| VICE CHANC. FOR STUDENT AFFAIRS | 2306 |
| GRADUATE STUDIES & RESEARCH | 2202 |

1st FLOOR

| | |
|-------------------------|------|
| BURSAR | 1101 |
| EDUCATIONAL OUTREACH | 1330 |
| ENROLLMENT | 1309 |
| OFFICE OF THE REGISTRAR | 1207 |
| PARKING SERVICES | 1113 |
| STUDENT SERVICE CENTER | 1309 |
| TRANSFER CENTER | 1218 |
| VETERANS SERVICES | 1207 |

LOWER LEVEL

| | |
|---------------------------------------|------|
| ACCOUNTING and DISBURSEMENTS | 0110 |
| FAST COPY SERVICE | 0315 |
| EXTERNAL AUDITORS | 0240 |
| INTERNAL AUDITORS | 0248 |
| ITS (Information Technology Services) | 0203 |
| POST OFFICE | 0232 |
| UNIVERSITY HOUSING | 0224 |

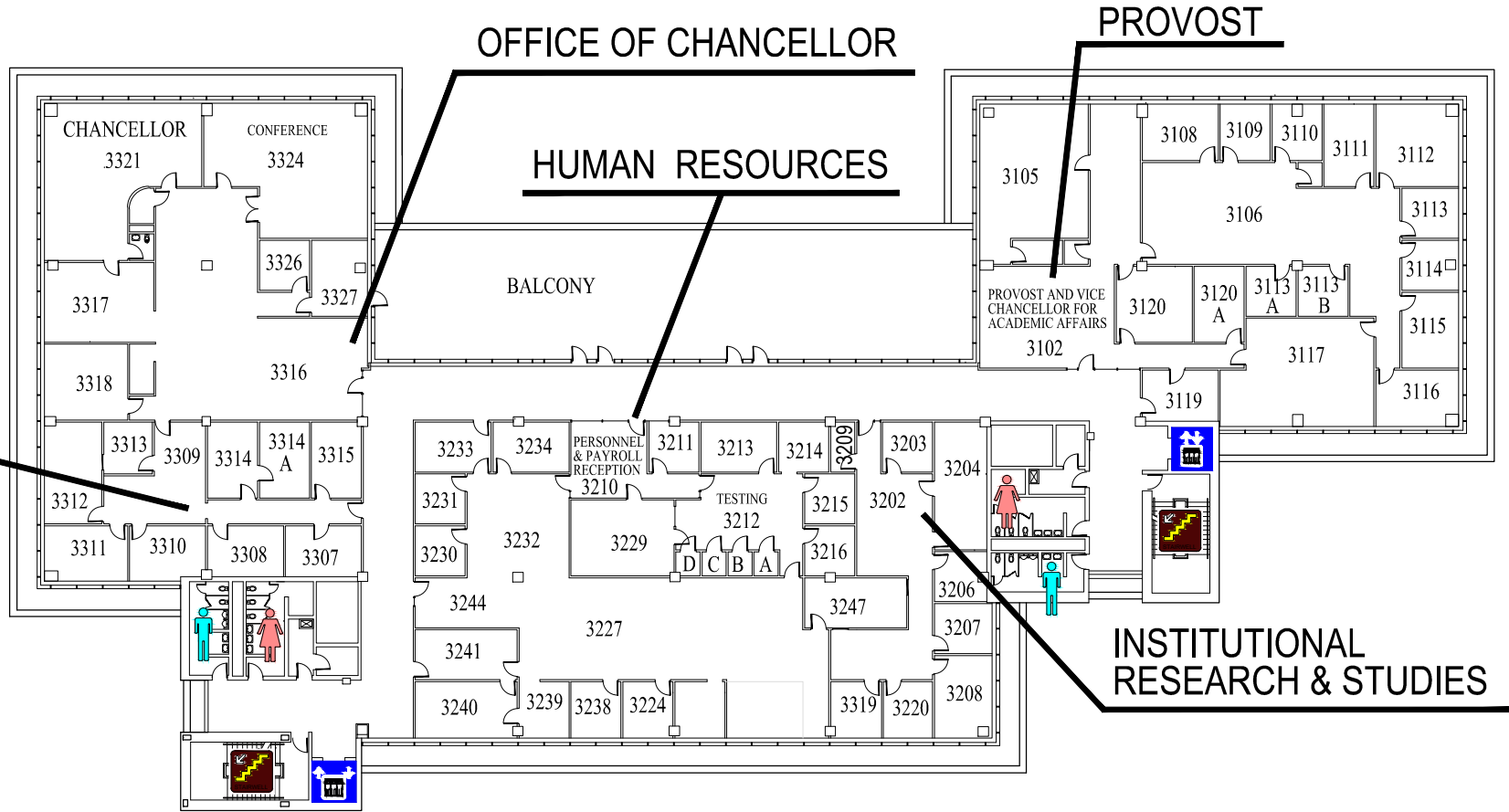
EMERGENCY

STORM SHELTERS
&
EXITS

John S. Rendleman Hall

Send Comments on Floor Plan to:

donande@siue.edu



INSTITUTIONAL COMPLIANCE

OFFICE OF CHANCELLOR

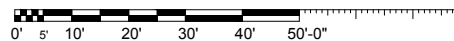
PROVOST

HUMAN RESOURCES

BALCONY

INSTITUTIONAL RESEARCH & STUDIES

3rd FLOOR



John S. Rendleman Hall

Send Comments on Floor Plan to:
donande@siue.edu

GRADUATE STUDIES & RESEARCH

STUDENT EMPLOYMENT

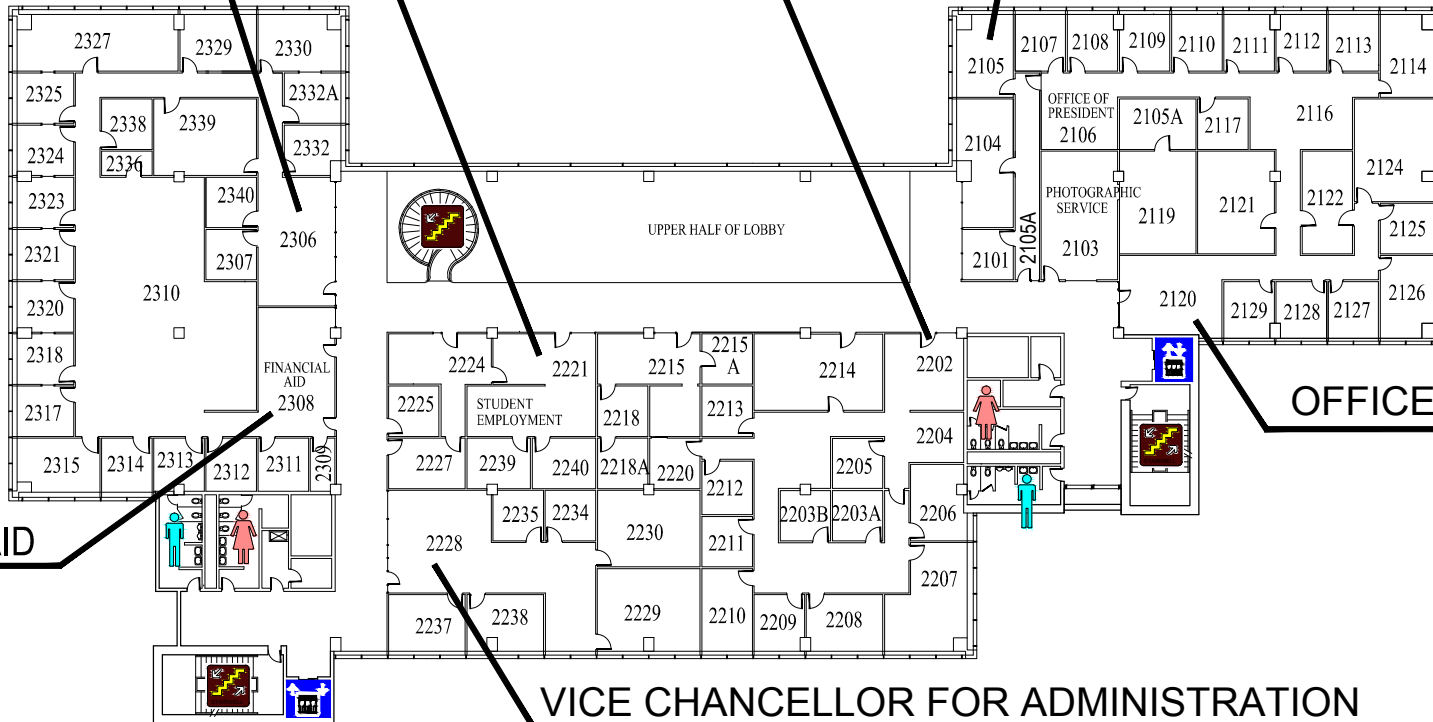
VICE CHANCELLOR FOR STUDENT AFFAIRS

MARKETING & COMMUNICATIONS

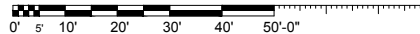
STUDENT FINANCIAL AID

OFFICE of ADMISSIONS

VICE CHANCELLOR FOR ADMINISTRATION



2nd FLOOR



John S. Rendleman Hall

Send Comments on Floor Plan to:

donande@siue.edu

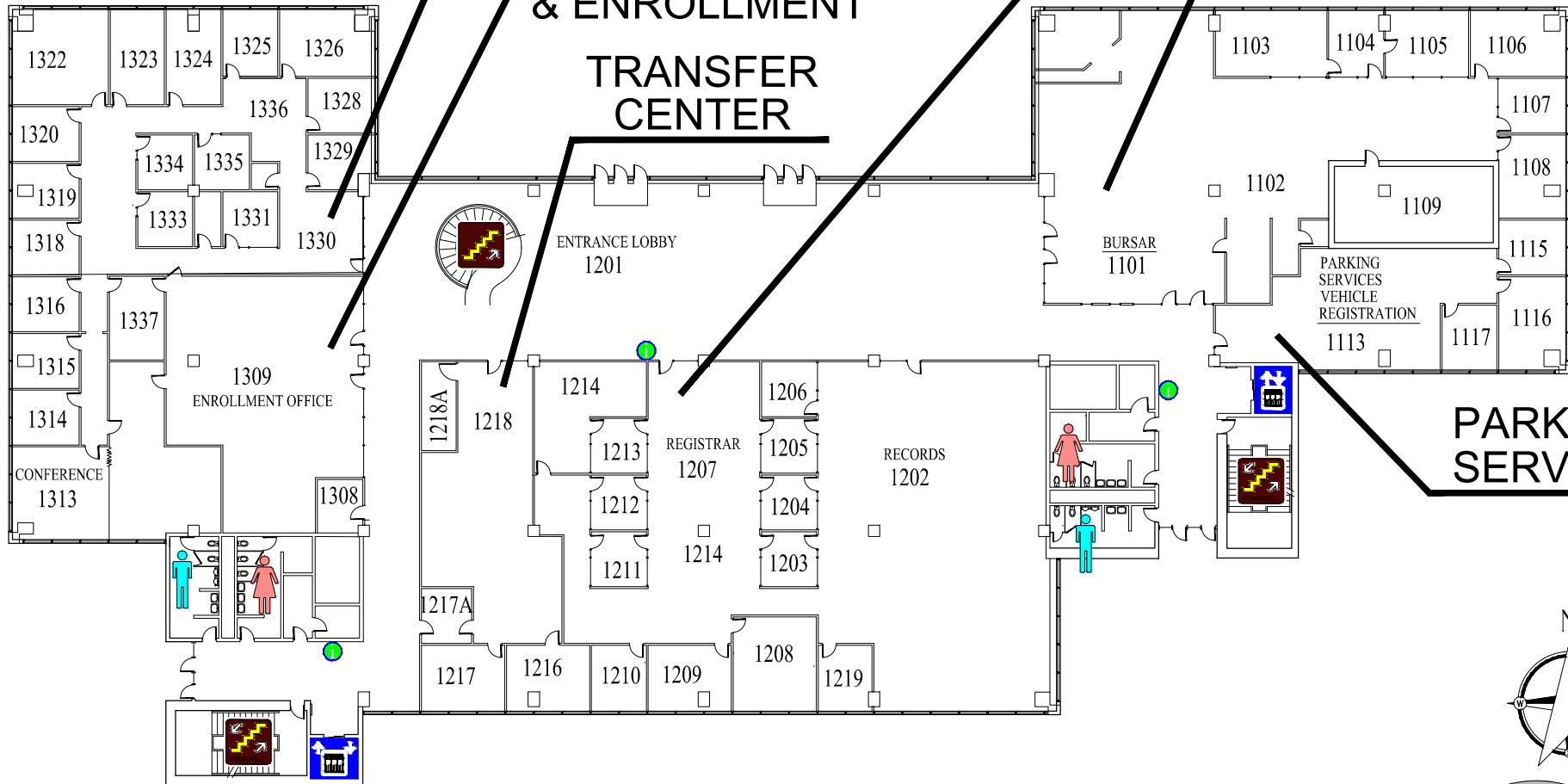
EDUCATIONAL OUTREACH

VETERANS SERVICES &
OFFICE OF THE REGISTRAR

STUDENT
SERVICES CENTER
& ENROLLMENT

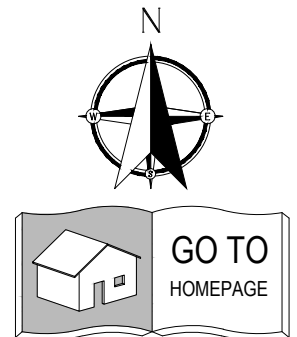
BURSAR

TRANSFER
CENTER



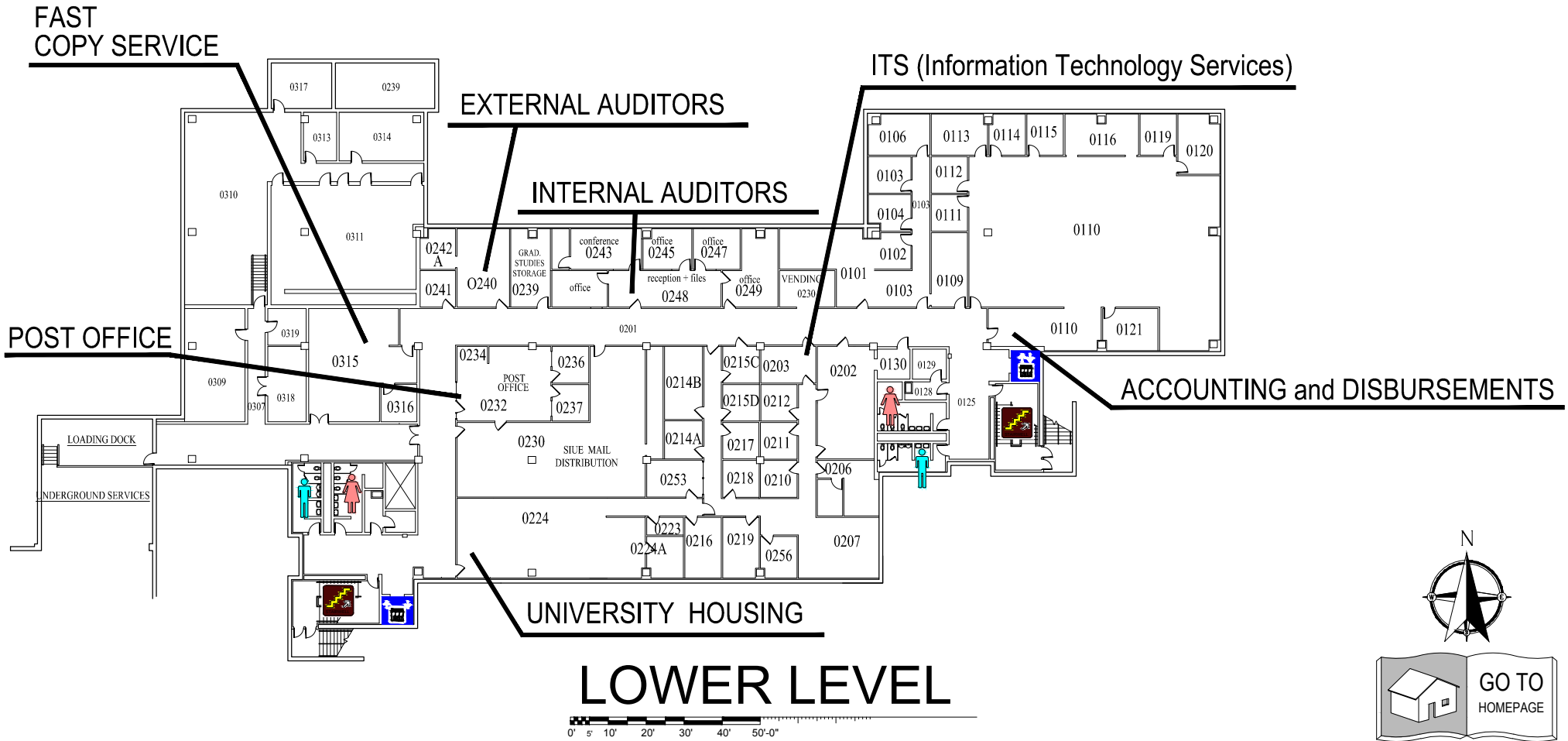
1st FLOOR

0' 5' 10' 20' 30' 40' 50'-0"

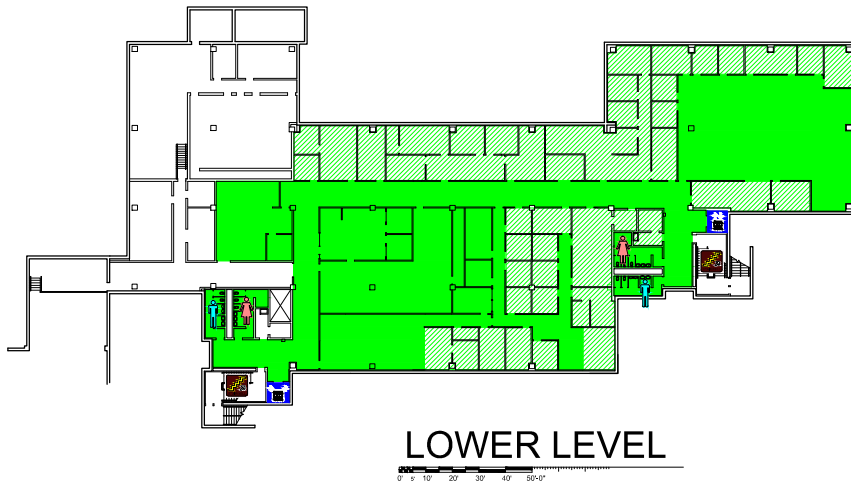


John S. Rendleman Hall

Send Comments on Floor Plan to:
donande@siue.edu



RENDLEMAN HALL



EMERGENCY
STORM SHELTERS
GO TO
Lower Level

Third Floor EXITS

Second Floor EXITS

First Floor EXITS

Lower Level EXITS

EMERGENCY EXITS



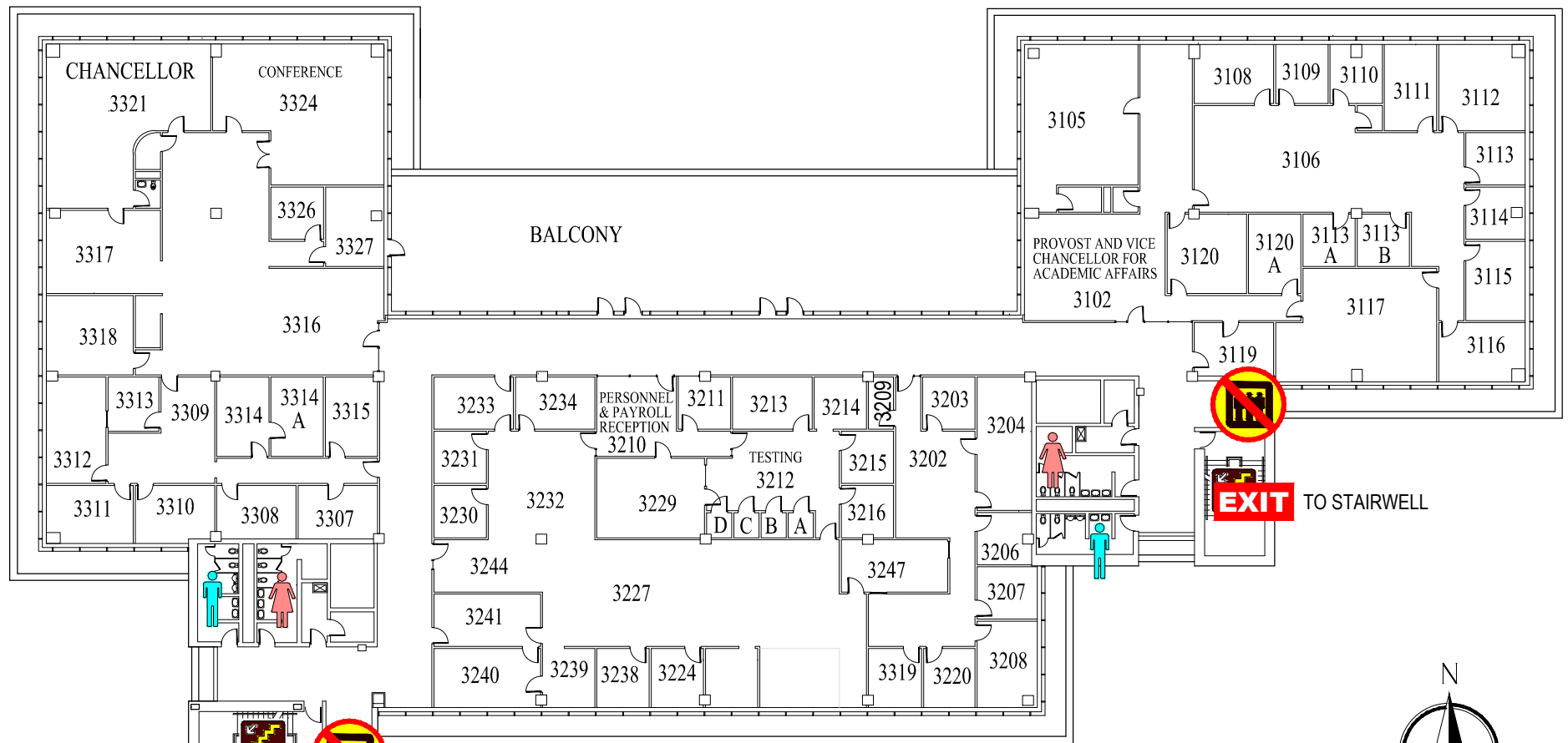
Send Comments on Floor Plan to: donande@siue.edu

EMERGENCY EXIT PLAN

EXIT IN CASE OF EMERGENCY USE MARKED EXITS **EXIT**

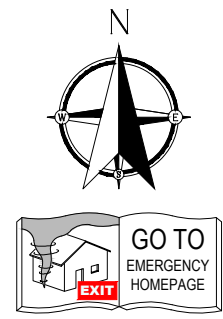
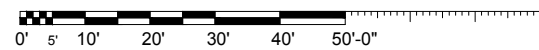
 **DO NOT USE ELEVATORS** 

 **WHEELCHAIR USERS ARE TO GO INTO** 
STAIR WELLS **EXIT** **AND WAIT FOR EMERGENCY PERSONNEL.**



EXIT 
TO STAIRWELL

RENDLEMAN HALL **3rd FLOOR**

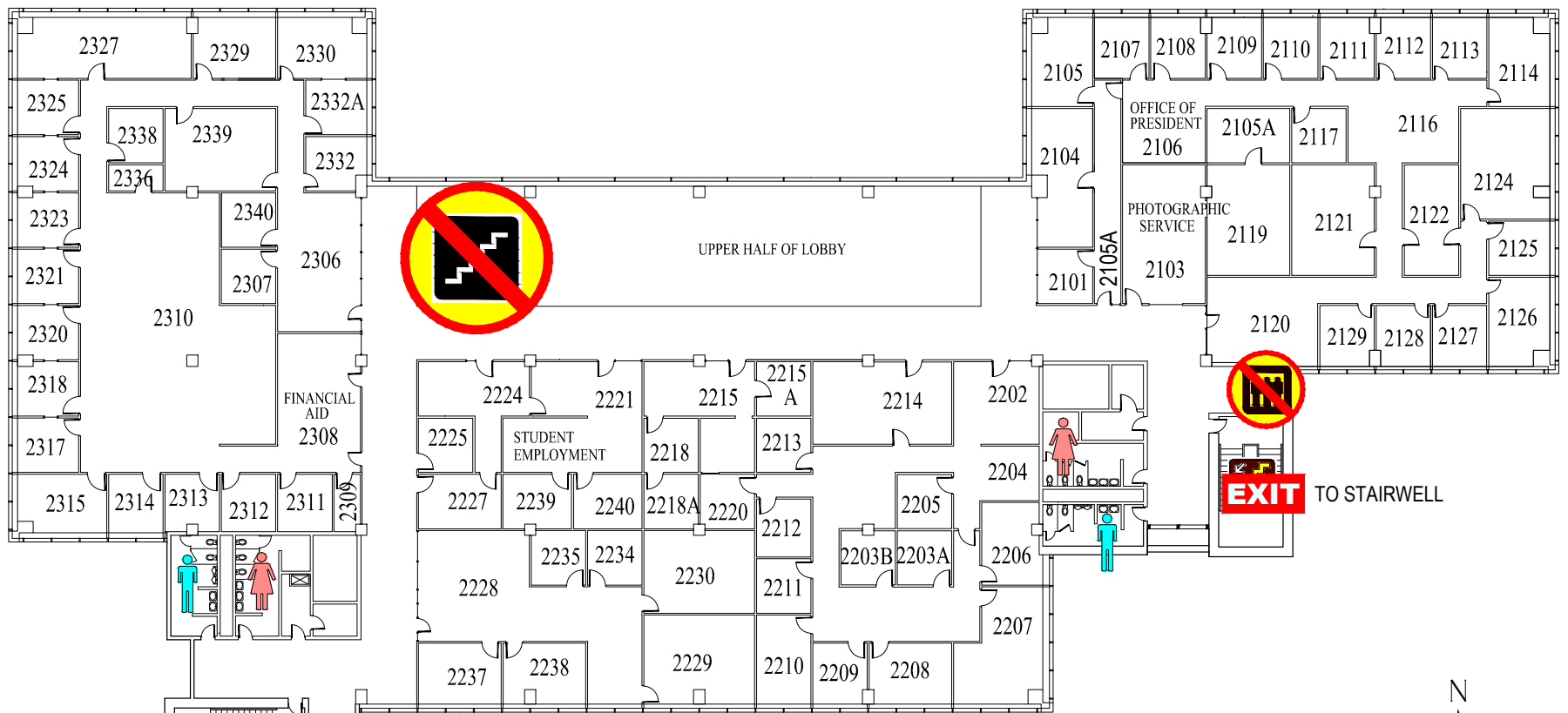


EMERGENCY EXIT PLAN

EXIT IN CASE OF EMERGENCY USE MARKED EXITS **EXIT**

 DO NOT USE OPEN STAIRS OR ELEVATORS 

 WHEELCHAIR USERS ARE TO GO INTO 
STAIR WELLS **EXIT** AND WAIT FOR EMERGENCY PERSONNEL.



RENDLEMAN HALL 2nd FLOOR

0' 5' 10' 20' 30' 40' 50'-0"

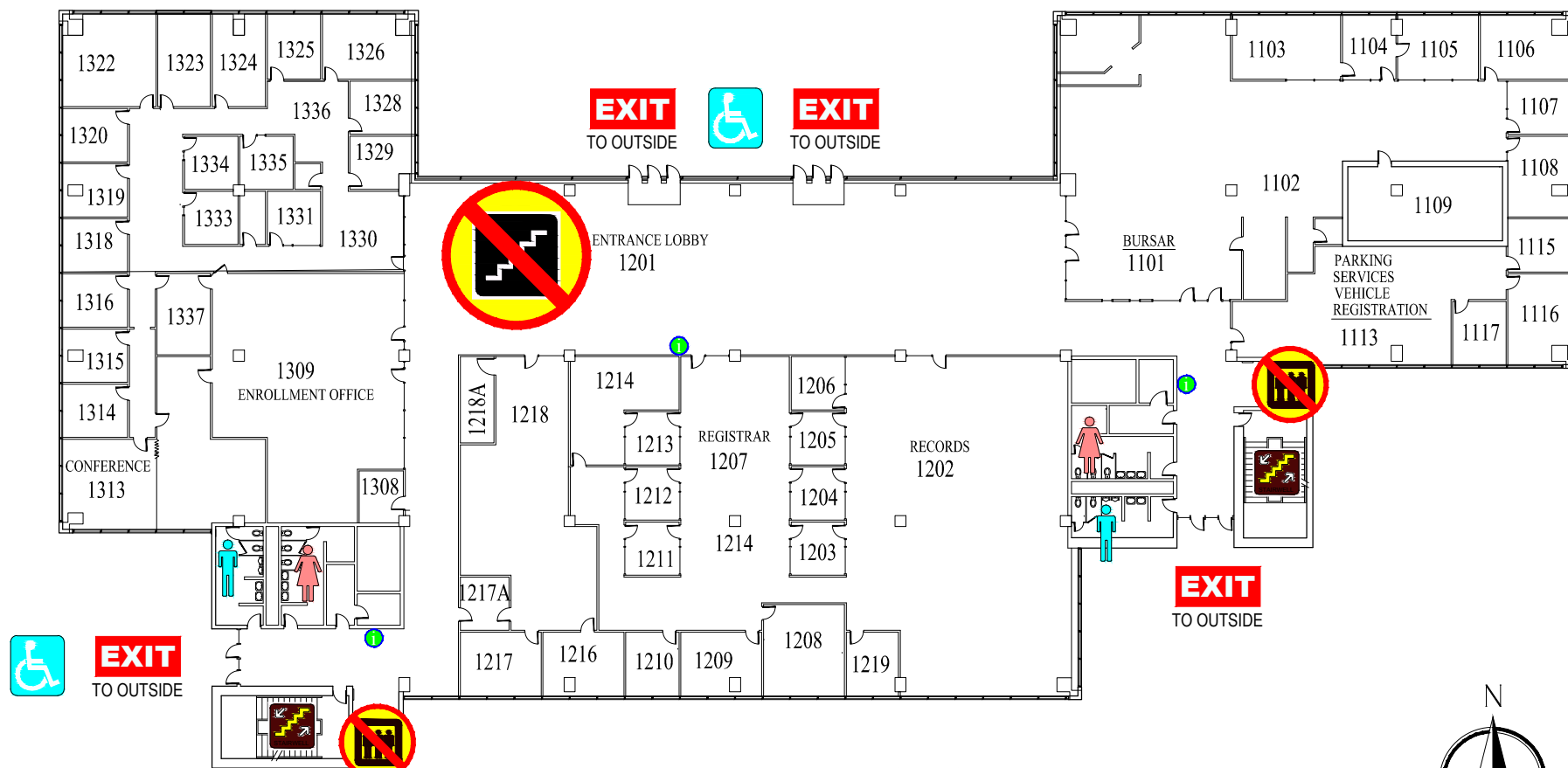


EMERGENCY EXIT PLAN

EXIT IN CASE OF EMERGENCY USE MARKED EXITS **EXIT**

 **DO NOT USE OPEN STAIRS OR ELEVATORS** 

 **WHEELCHAIR USERS ARE TO GO INTO** 
STAIR WELLS **EXIT** AND WAIT FOR EMERGENCY PERSONNEL.



1st FLOOR

0' 5' 10' 20' 30' 40' 50'-0"

RENDLEMAN HALL



