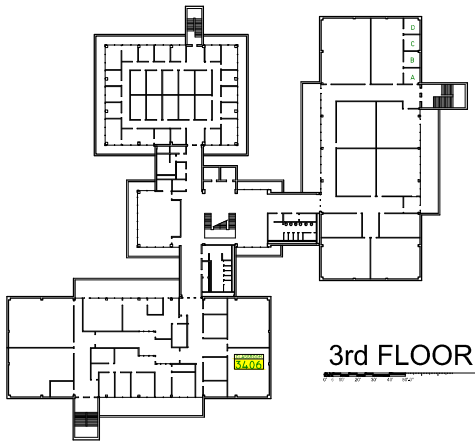
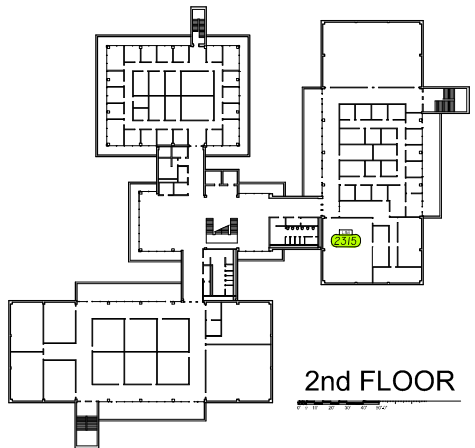


PECK HALL



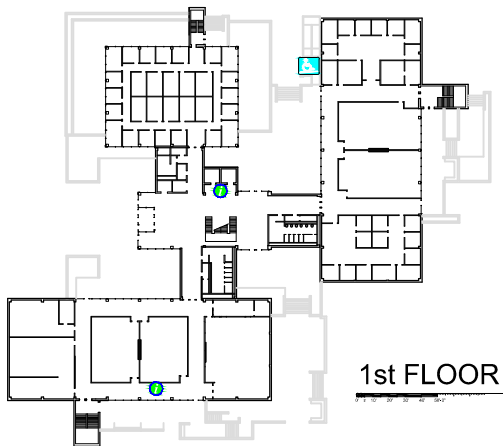
3rd FLOOR

BLACK STUDIES	3402
COLLEGE OF ARTS & SCIENCES	3409
ENGLISH LANG. & LITERATURE	3206
ENGLISH COMP. CLASSROOM	3310
HISTORICAL STUDIES	3224
PHILOSOPHY DEPARTMENT	3211
POLITICAL SCIENCE	3219
WOMEN'S STUDIES	3407



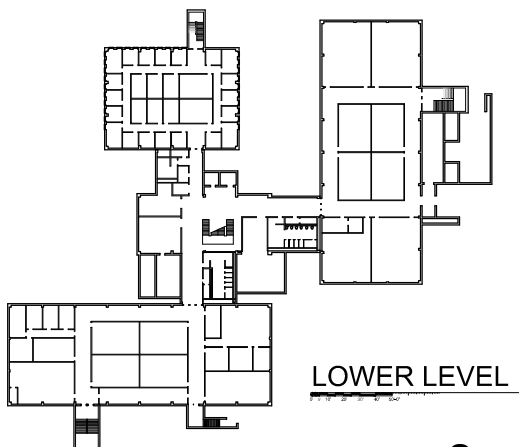
2nd FLOOR

COPY SERVICE	2226
FOREIGN LANG. & LITERATURE	2310



1st FLOOR

CAS ADVISEMENT	1315
COMPUTER LAB	1410
SOCIAL WORK	1211
SOCIOLOGY & CRIMINAL JUSTICE	1230



LOWER LEVEL

ANTHROPOLOGY	0211
ANTHROPOLOGY TEACHING MUSM.	0407
BUILDING SERVICES	0315

**EMERGENCY
STORM SHELTERS
&
EXITS**

Send Comments on Floor Plan to: donande@siue.edu

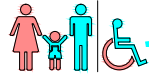
POLITICAL SCIENCE

HISTORICAL STUDIES

PHILOSOPHY DEPARTMENT

ENGLISH LANG. & LITERATURE

ENGLISH COMP. CLASSROOM



LOBBY

PECK HALL

Send Comments on Floor Plan to:
donande@siue.edu

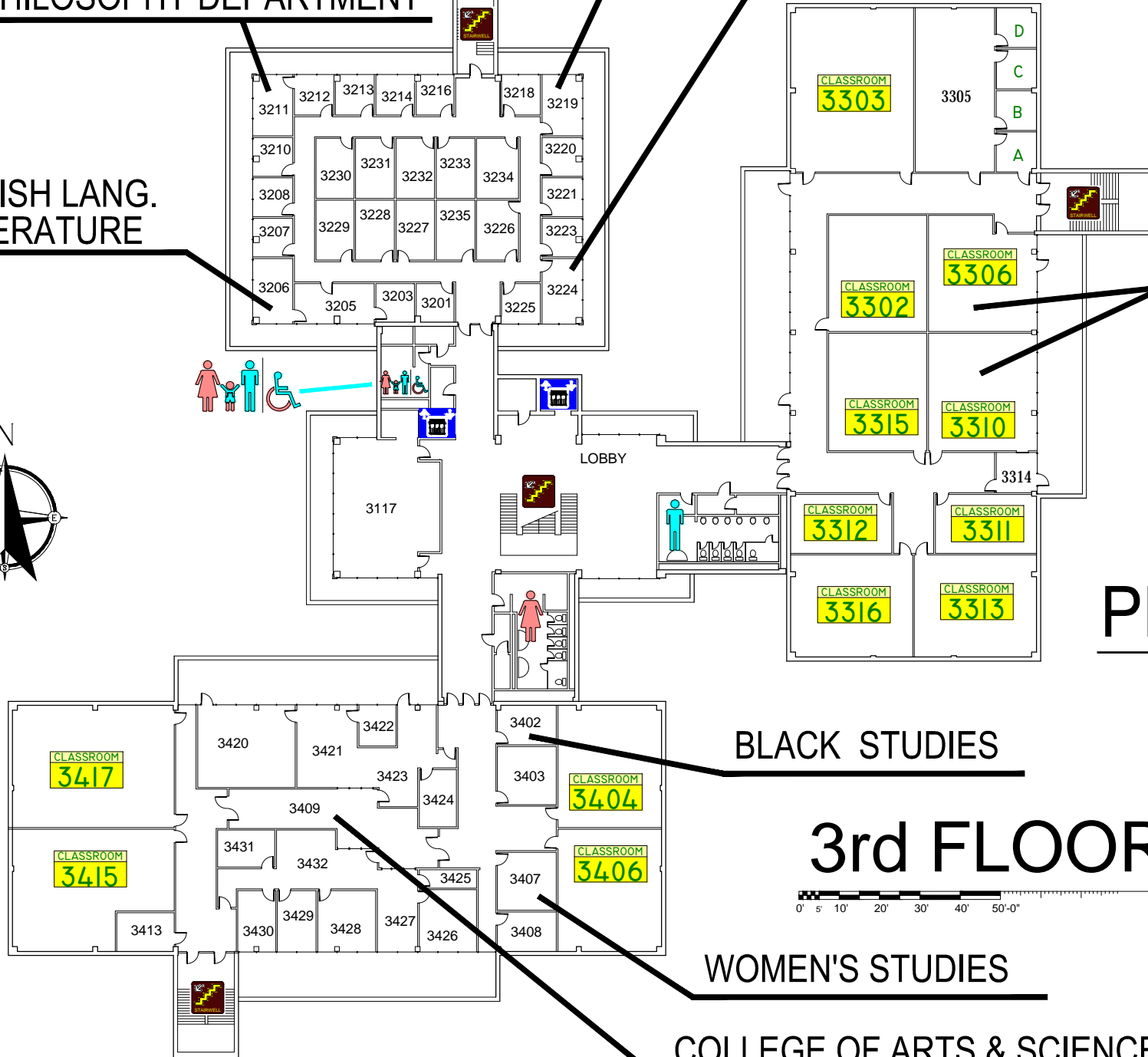
BLACK STUDIES

3rd FLOOR



WOMEN'S STUDIES

COLLEGE OF ARTS & SCIENCES

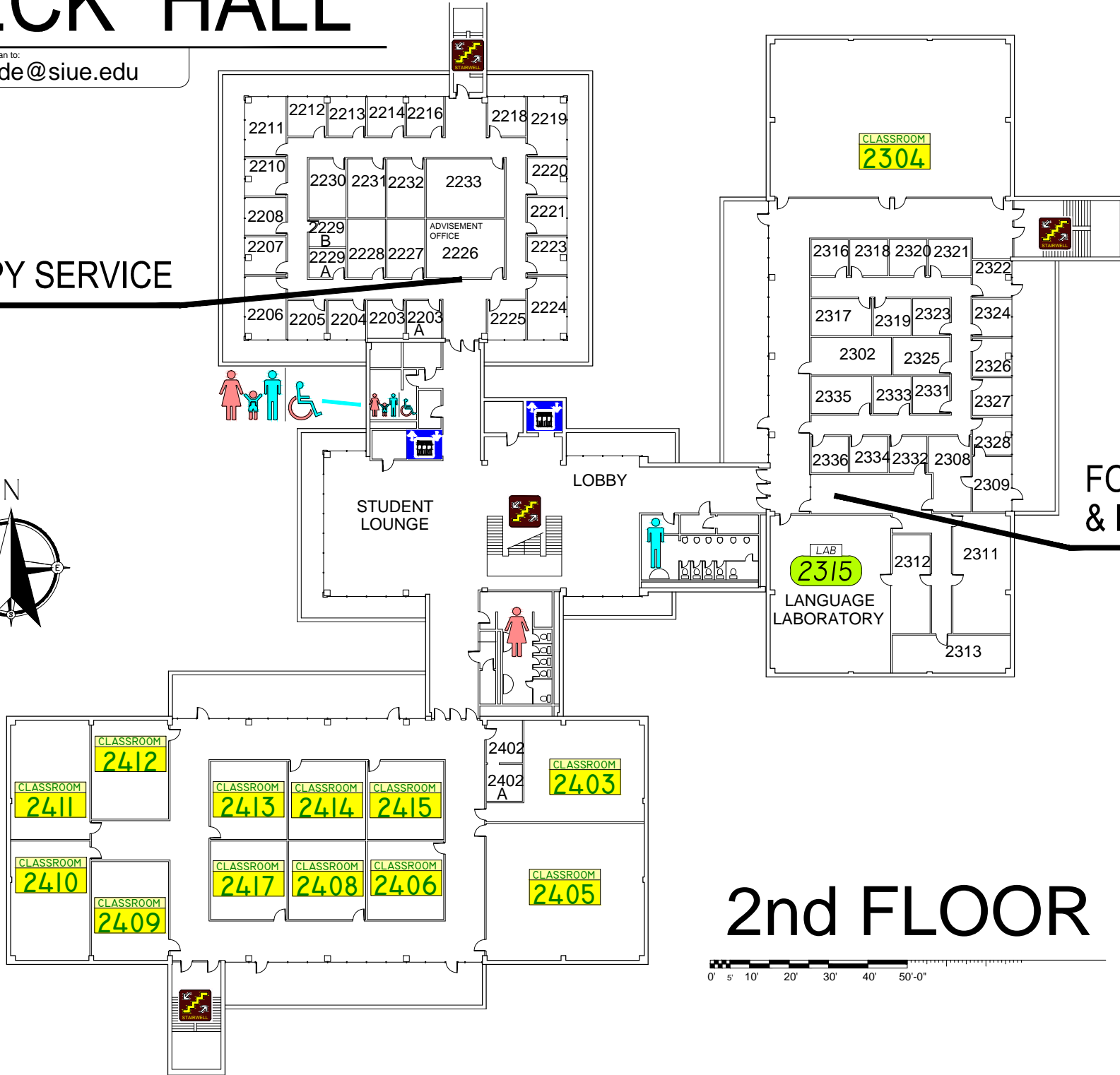


PECK HALL

Send Comments on Floor Plan to:
donande@siue.edu

COPY SERVICE

FOREIGN LANG. & LITERATURE



2nd FLOOR

0 5 10 20 30 40 50-0"

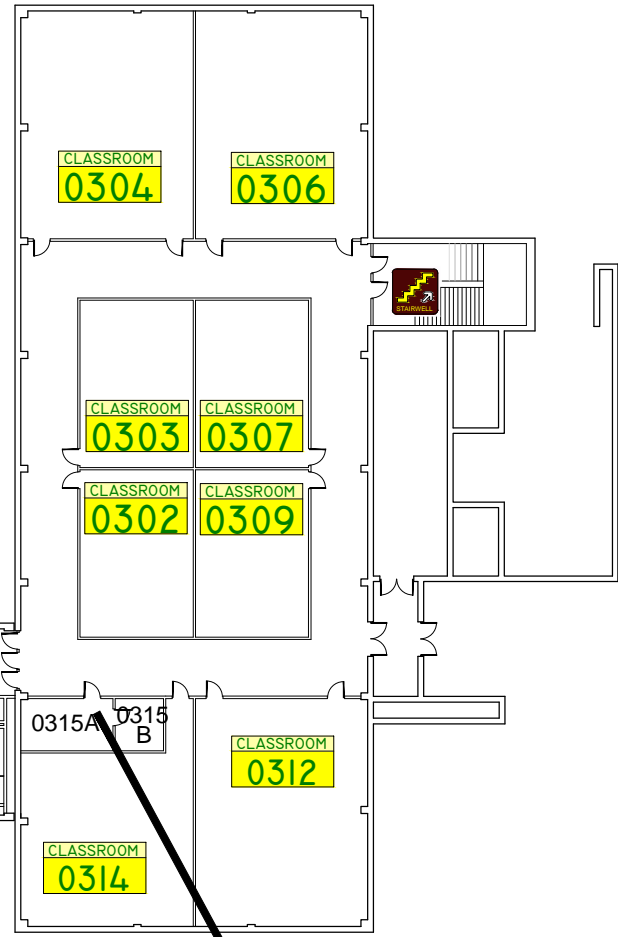
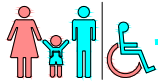
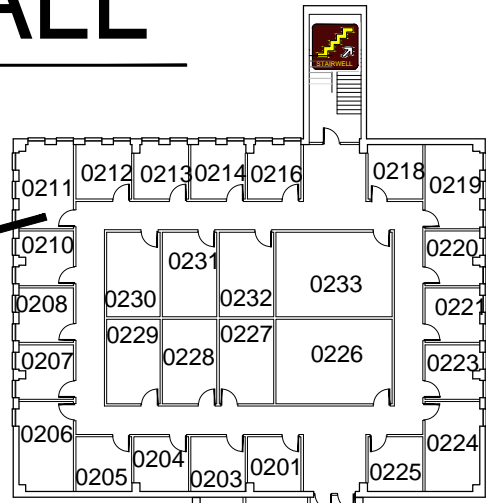


PECK HALL

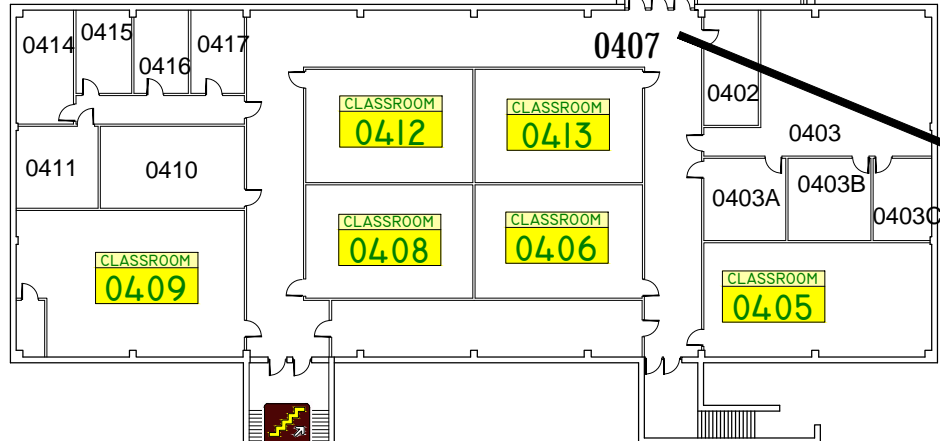
Send Comments on Floor Plan to:

donande@siue.edu

ANTHROPOLOGY

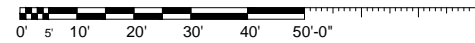


BUILDING SERVICES



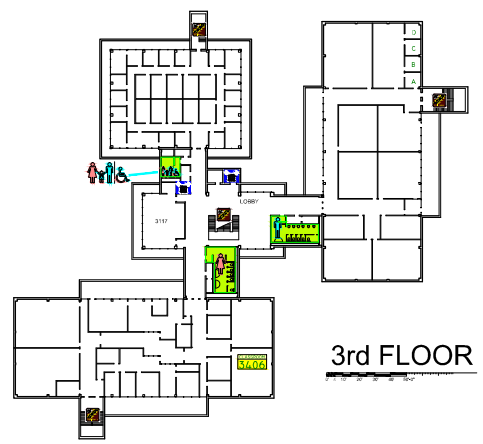
ANTHROPOLOGY TEACHING MUSEUM.

LOWER LEVEL



LOVEJOY LIBRARY

EMERGENCY STORM SHELTERS

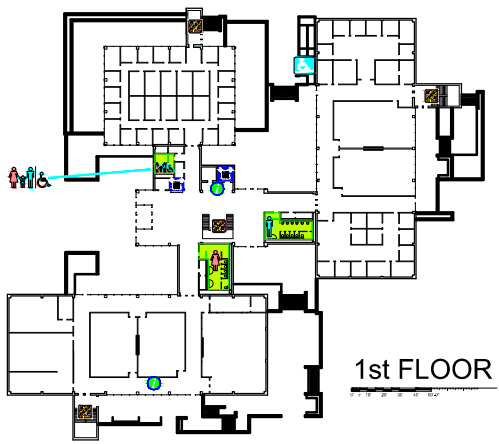
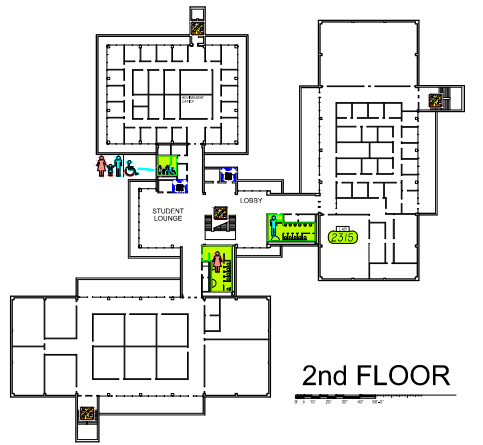


Third Floor

Second Floor

First Floor

Lower Level



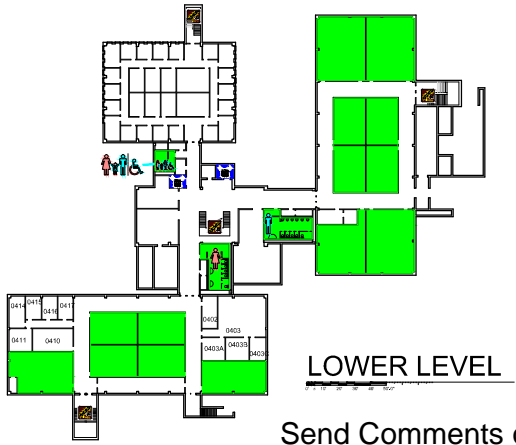
EMERGENCY EXITS

Third Floor

Second Floor

First Floor

Lower Level



Send Comments on Floor Plan to: donande@siue.edu

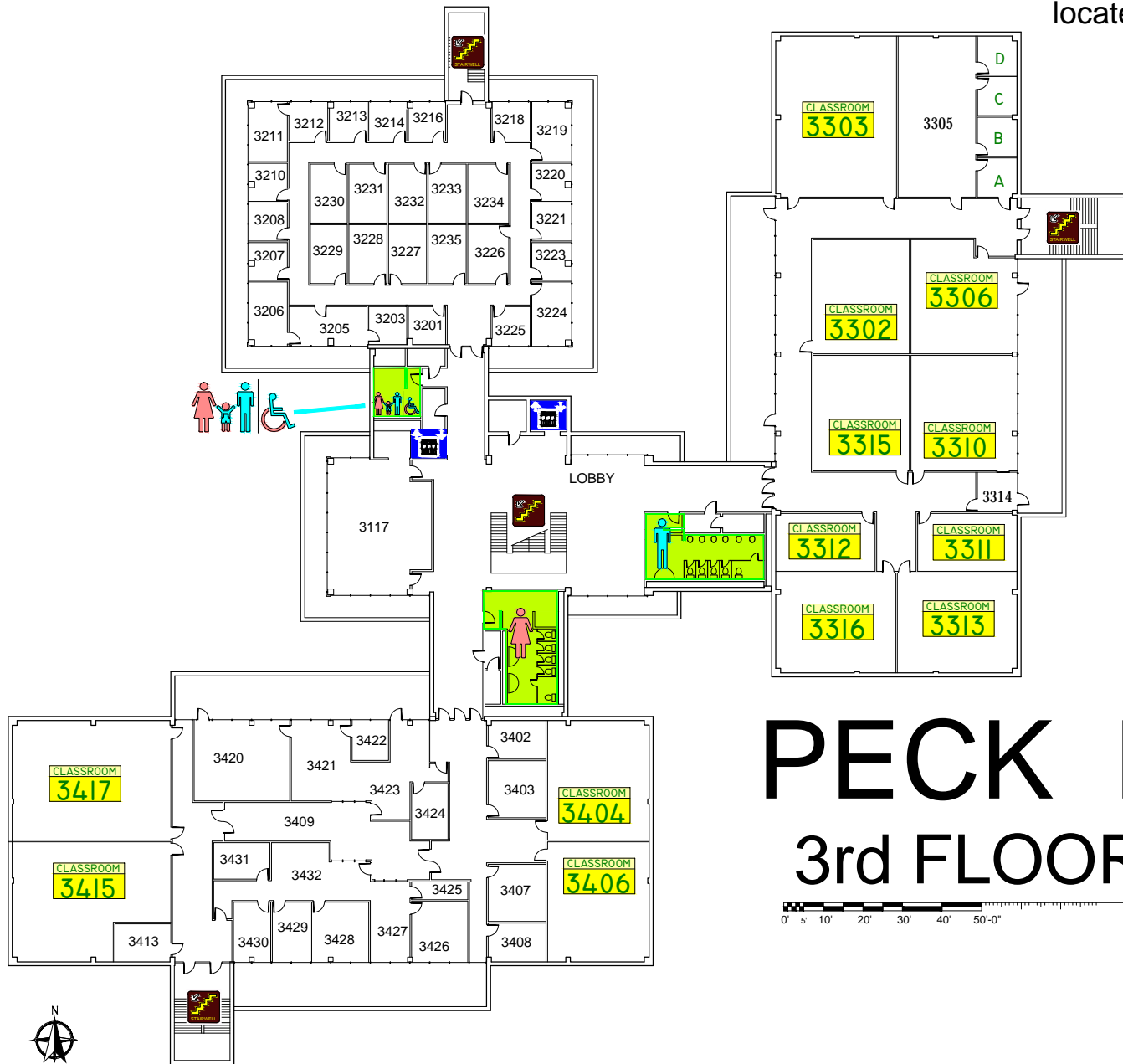


EMERGENCY STORM SHELTERS

In event of a Tornado Warning everyone should go to a Lower Level **PRIMARY SHELTER**

In event you can not get to a Primary Shelter go to a **SECONDARY STORM SHELTER**

located on 1st, 2nd, & 3rd floors



PECK HALL 3rd FLOOR

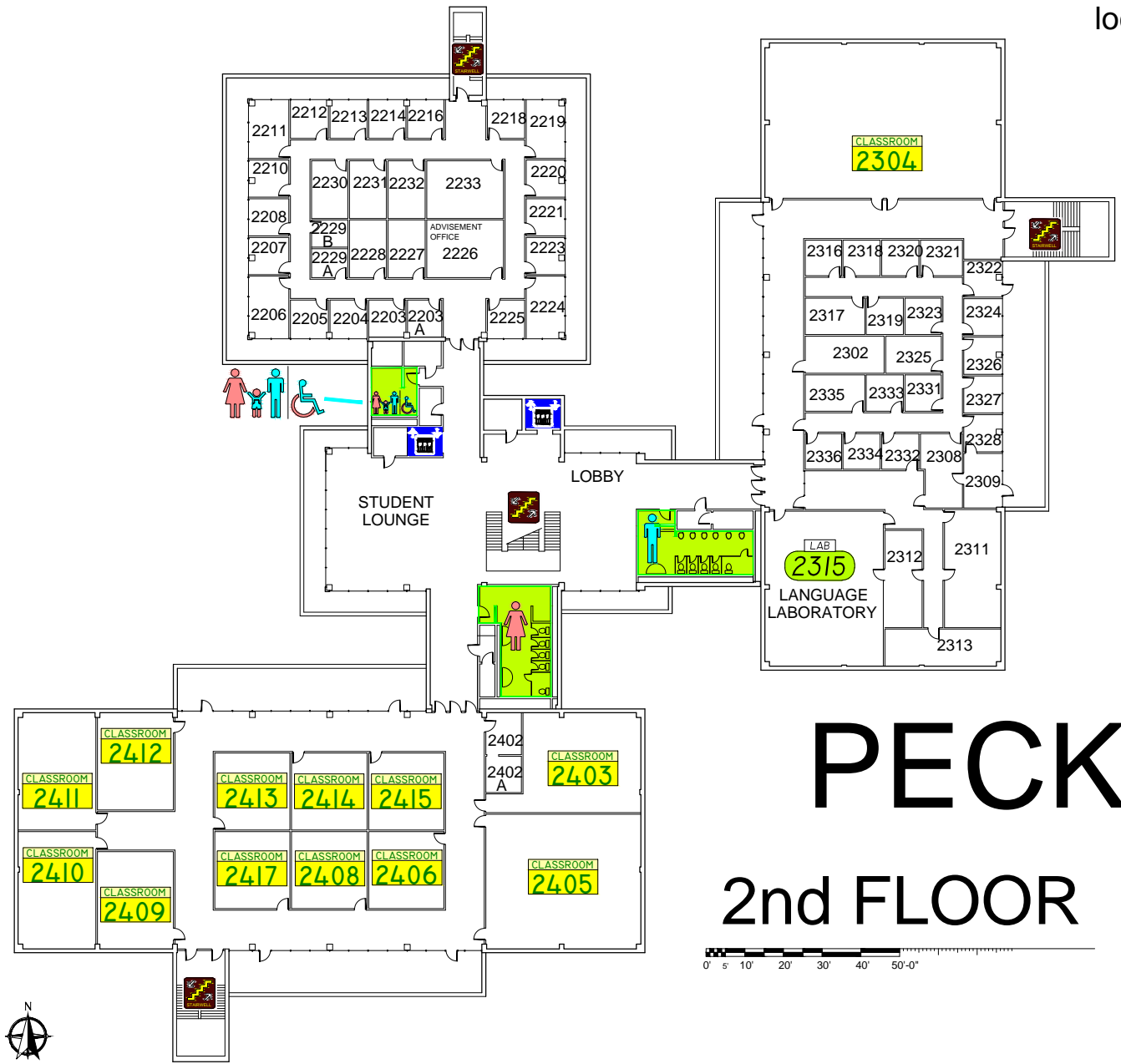


EMERGENCY STORM SHELTERS

In event of a Tornado Warning everyone should go to a Lower Level **Primary Storm Shelter**

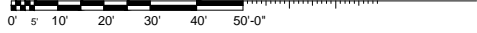
In event you can not get to a Primary Shelter go to a **Secondary Storm Shelter**

located on 1st, 2nd, & 3rd floors



PECK HALL

2nd FLOOR

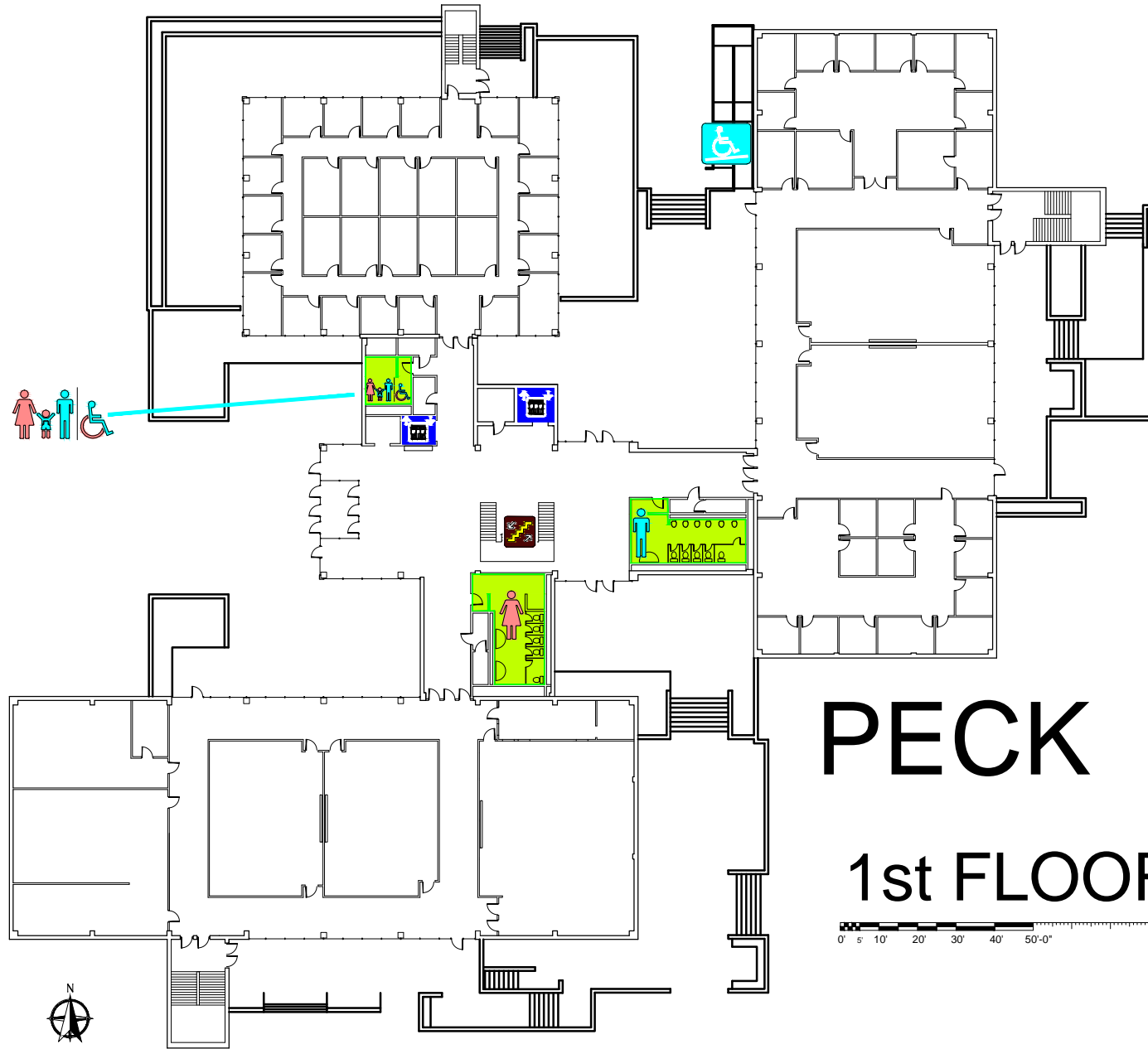


EMERGENCY STORM SHELTERS

In event of a Tornado Warning everyone should go to a Lower Level **PRIMARY SHELTER**

In event you can not get to a Primary Shelter go to a **SECONDARY STORM SHELTER**

located on 1st, 2nd, & 3rd floors



PECK HALL

1st FLOOR

0' 5' 10' 20' 30' 40' 50'-0"

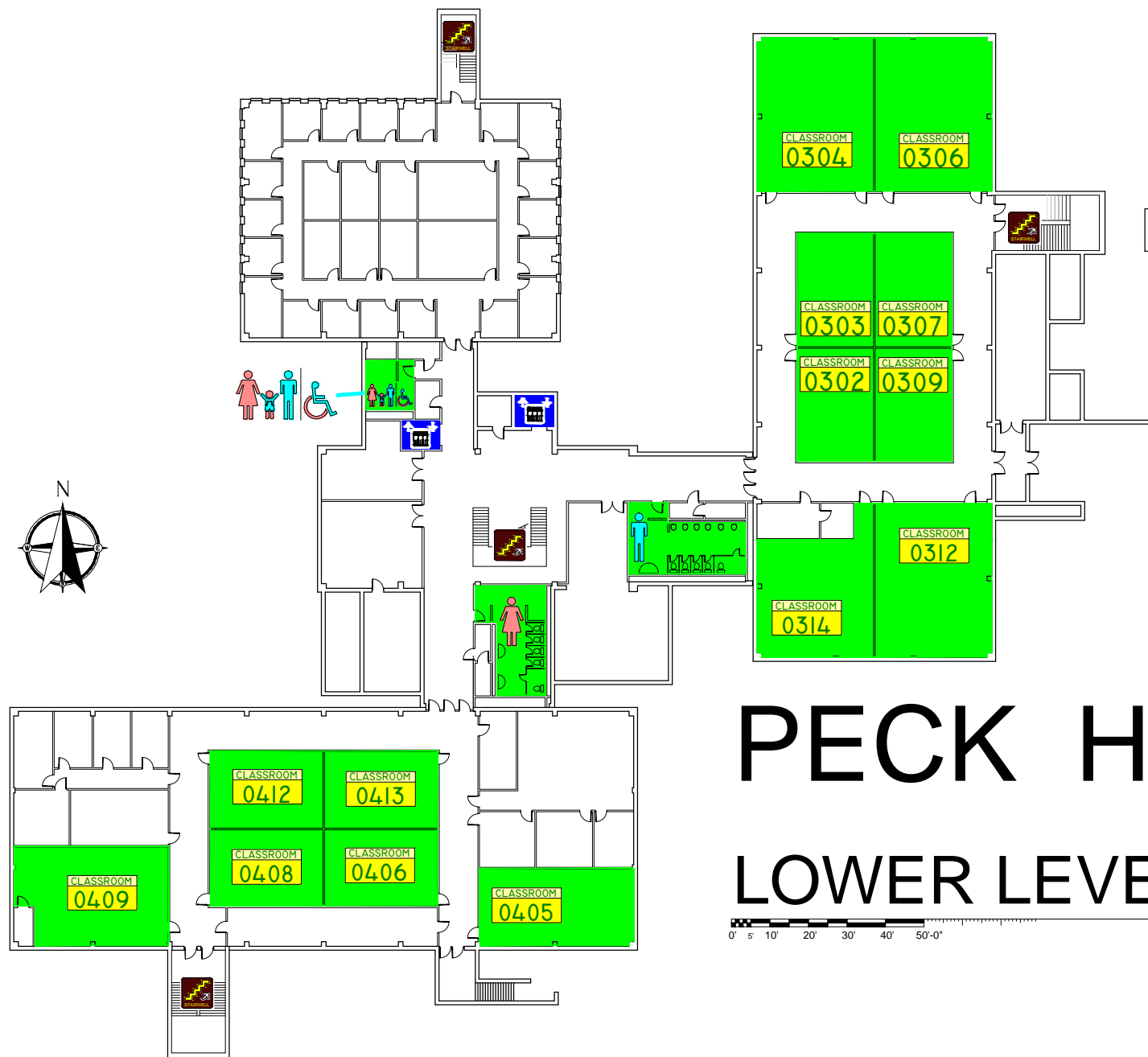


EMERGENCY STORM SHELTERS

In event of a Tornado Warning everyone should go to a

PRIMARY STORM SHELTERS

located here on the lower level



PECK HALL

LOWER LEVEL

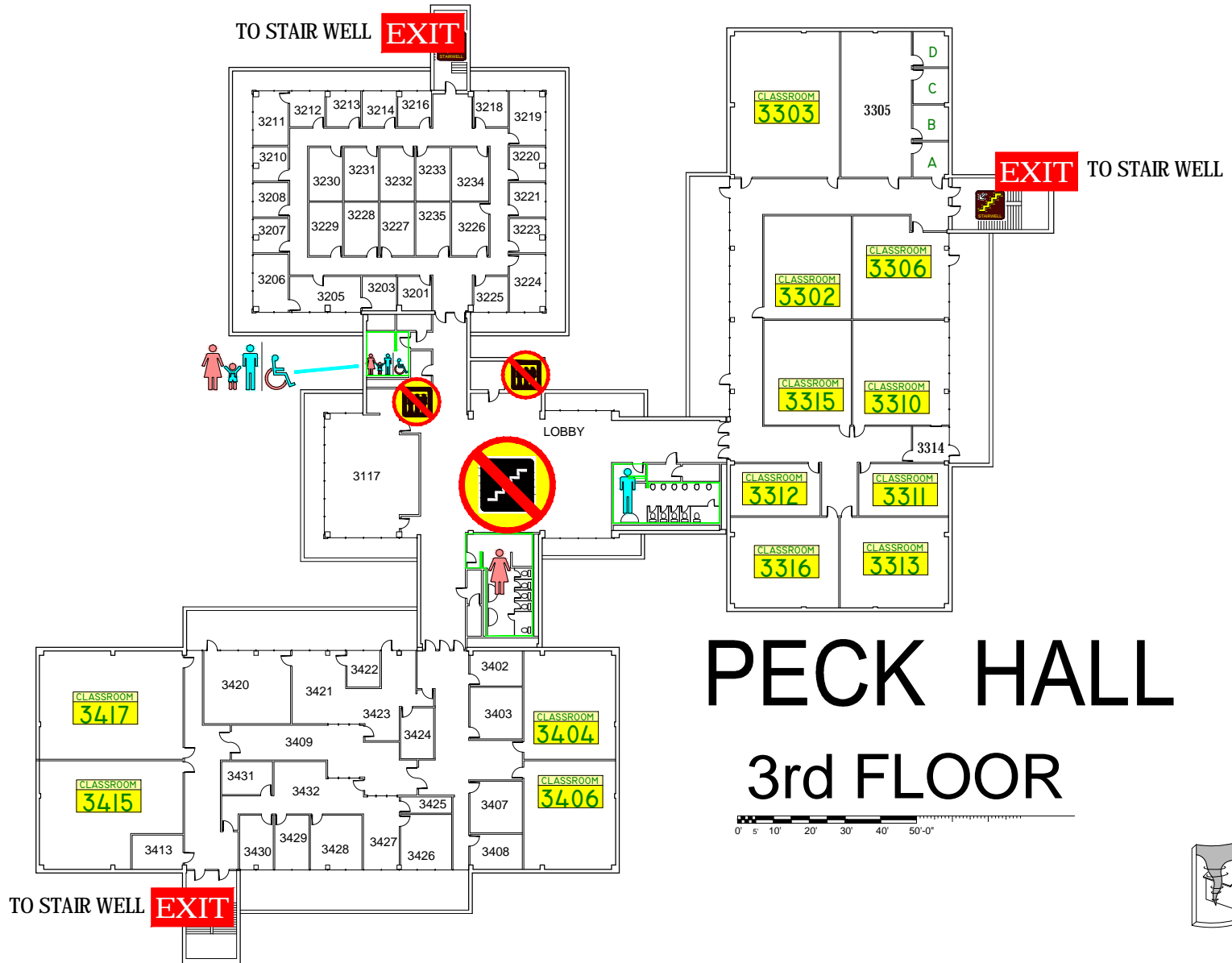


EMERGENCY EXIT PLAN

EXIT IN CASE OF EMERGENCY USE MARKED EXITS **EXIT**

 DO NOT USE OPEN STAIRS OR ELEVATORS 

 WHEELCHAIR USERS ARE TO GO INTO THE STAIR WELLS **EXIT** AND WAIT FOR EMERGENCY PERSONNEL. 



PECK HALL 3rd FLOOR



EMERGENCY EXIT PLAN

EXIT IN CASE OF EMERGENCY USE MARKED EXITS **EXIT**

 DO NOT USE OPEN STAIRS OR ELEVATORS 

 WHEELCHAIR USERS ARE TO GO INTO THE STAIR WELLS **EXIT** AND WAIT FOR EMERGENCY PERSONNEL. 



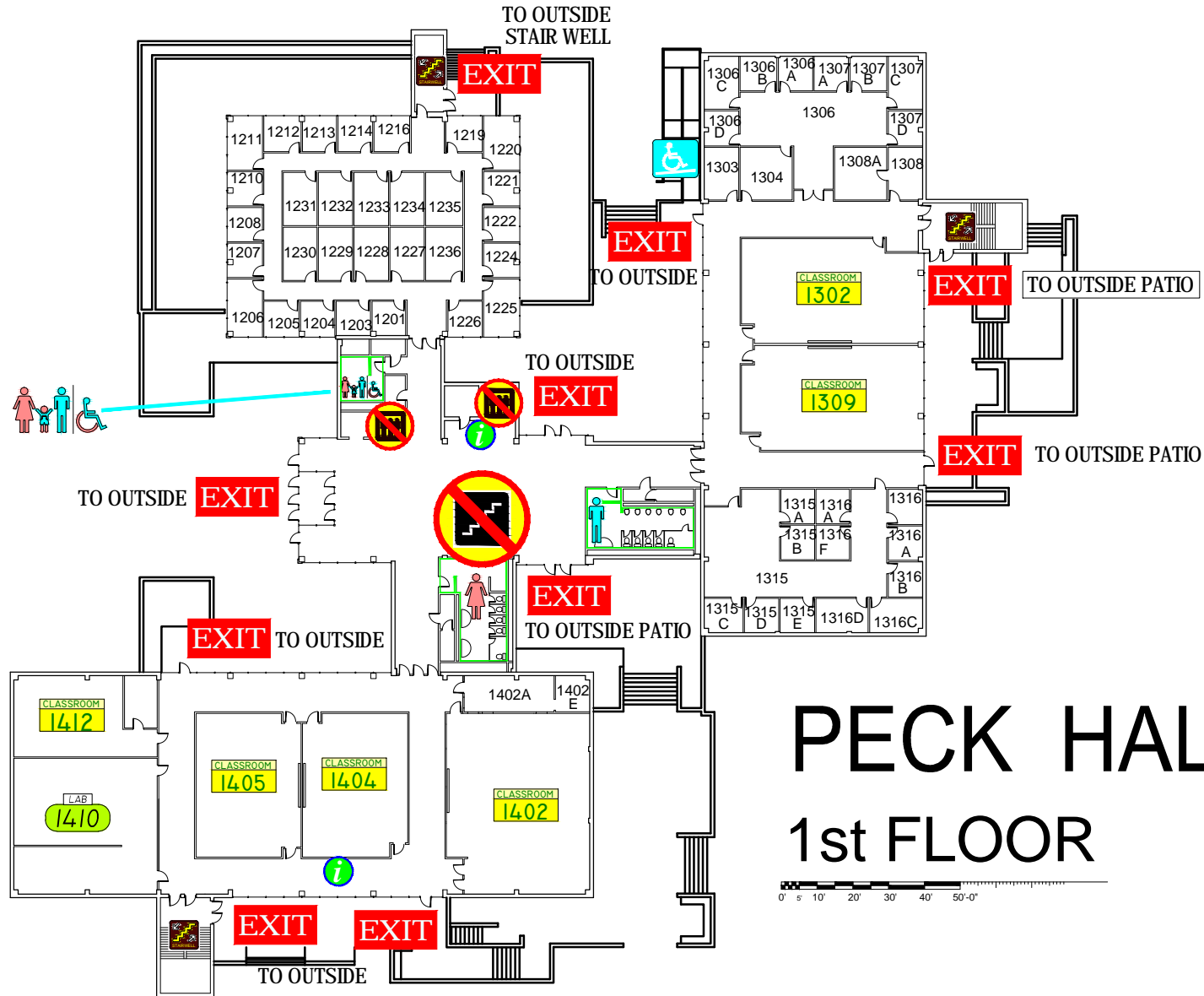
PECK HALL 2nd FLOOR

EMERGENCY EXIT PLAN

EXIT IN CASE OF EMERGENCY USE MARKED EXITS **EXIT**

 DO NOT USE OPEN STAIRS OR ELEVATORS 

 WHEELCHAIR USERS ARE TO GO TO A **EXIT** AND IF POSSIBLE AVOID EXITS (TO OUTSIDE PATIO) OR (TO OUTSIDE STAIR WELL) 



PECK HALL 1st FLOOR



EMERGENCY EXIT PLAN

EXIT IN CASE OF EMERGENCY USE MARKED EXITS **EXIT**

 DO NOT USE OPEN STAIRS OR ELEVATORS 

 WHEELCHAIR USERS ARE TO GO INTO THE STAIR WELLS **EXIT** AND WAIT FOR EMERGENCY PERSONNEL. 

