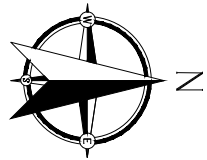
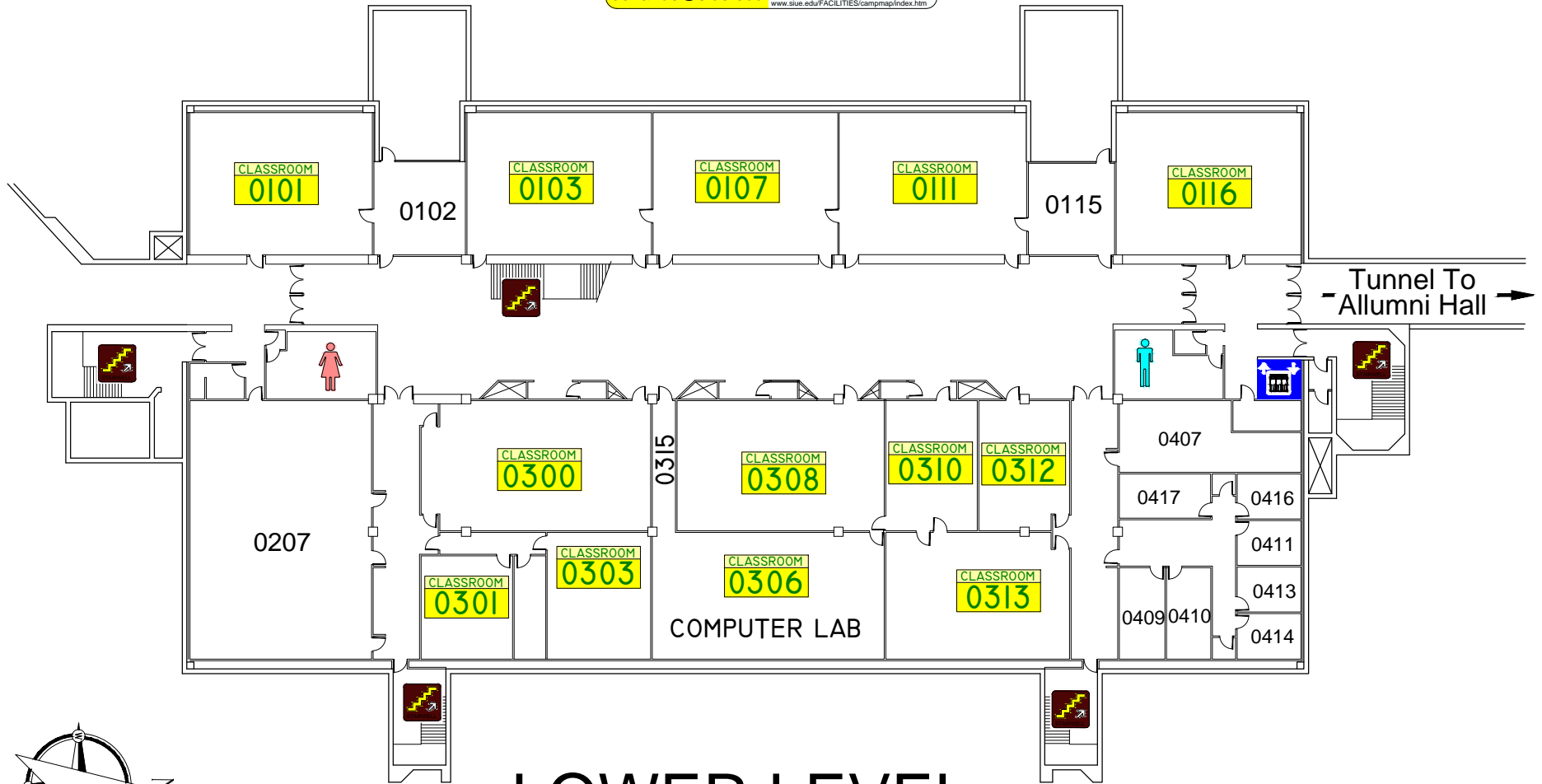


FOUNDERS HALL

SEND COMMENTS TO: donande@siue.edu Facilities Management
Maps & Floor Plans
www.siue.edu/FACILITIES/campmap/index.htm



LOWER LEVEL

0' 5' 10' 20' 30' 40' 50'-0"

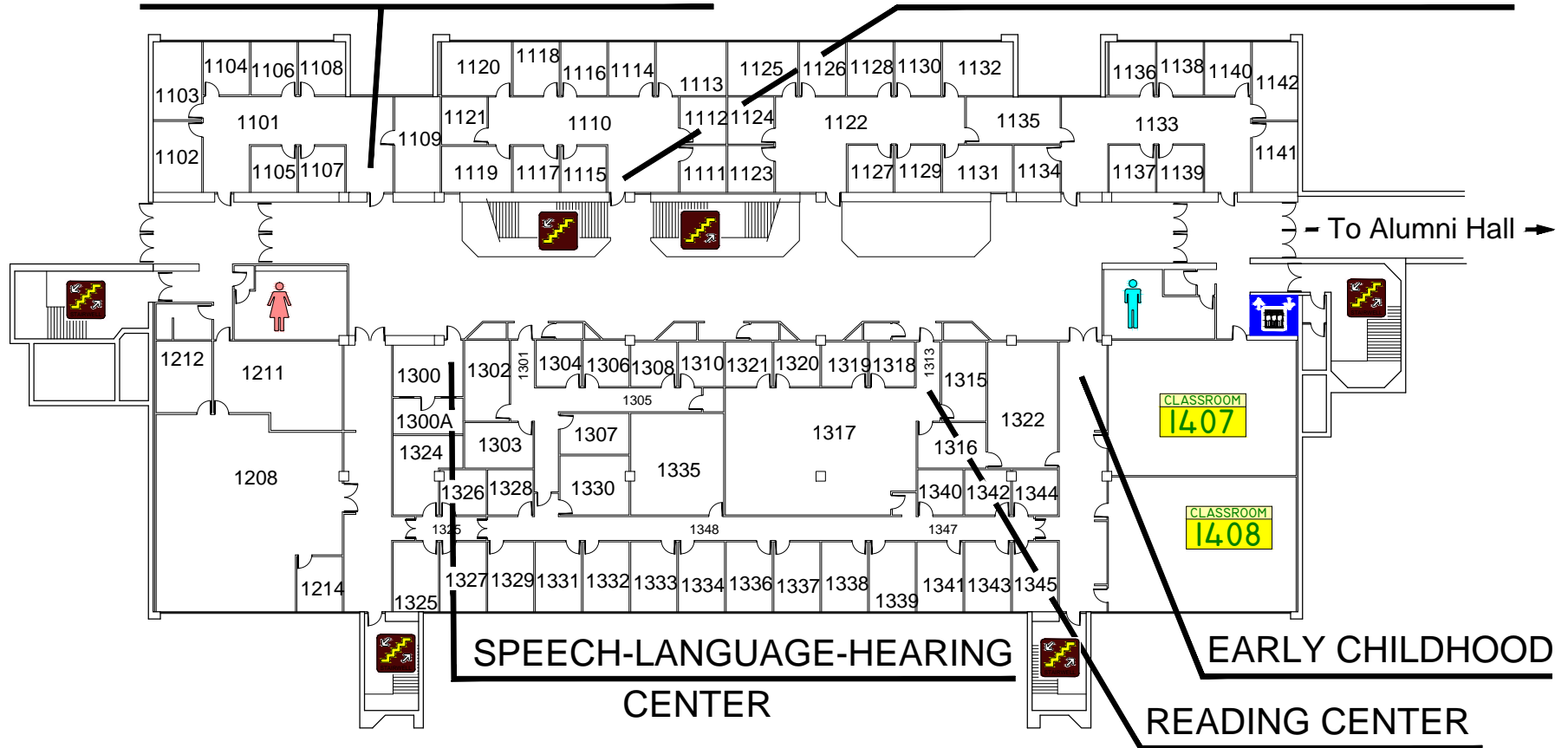
FOUNDERS HALL

SEND COMMENTS TO:
donande@siue.edu

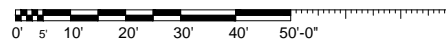
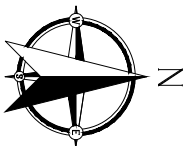
Facilities Management
Maps & Floor Plans
www.siu.edu/FACILITIES/camemap/index.htm

**SPECIAL EDUCATION &
COMMUNICATION DISORDERS**

**CLINICAL EXPERIENCE,
CERTIFICATION & ADVISEMENT**



1st FLOOR

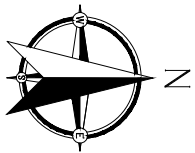
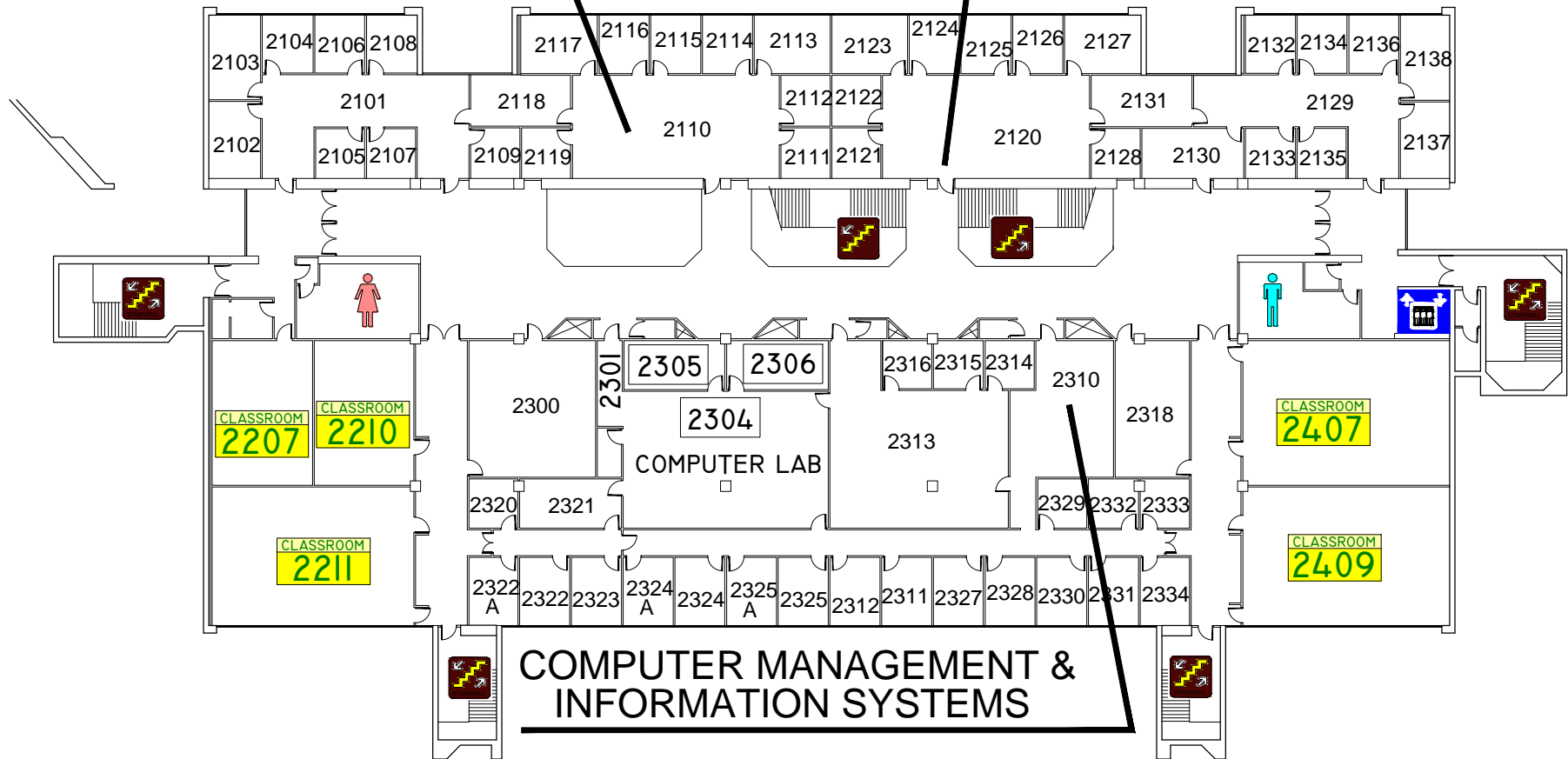


FOUNDERS HALL

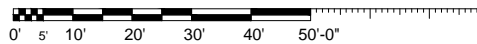
SEND COMMENTS TO: donande@siue.edu Facilities Management
Maps & Floor Plans
www.siue.edu/FACILITIES/campmap/index.htm

ACCOUNTING

MANAGEMENT & MARKETING



2nd FLOOR

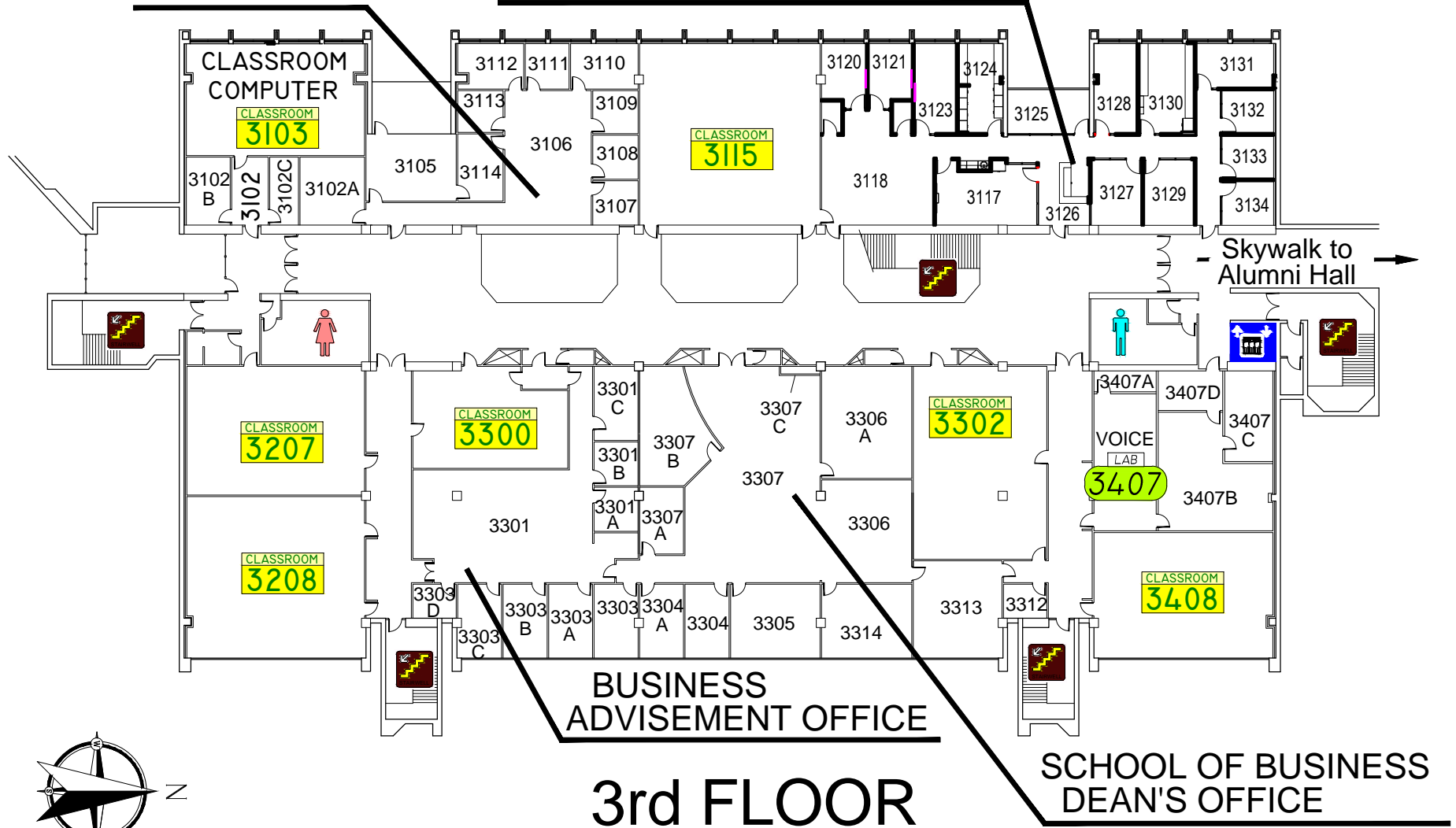


FOUNDERS HALL

SEND COMMENTS TO: donande@siue.edu Facilities Management
Maps & Floor Plans
www.siu.edu/FACILITIES/campmap/index.htm

ROTC, ARMY

COUGAR BUSINESS CENTER



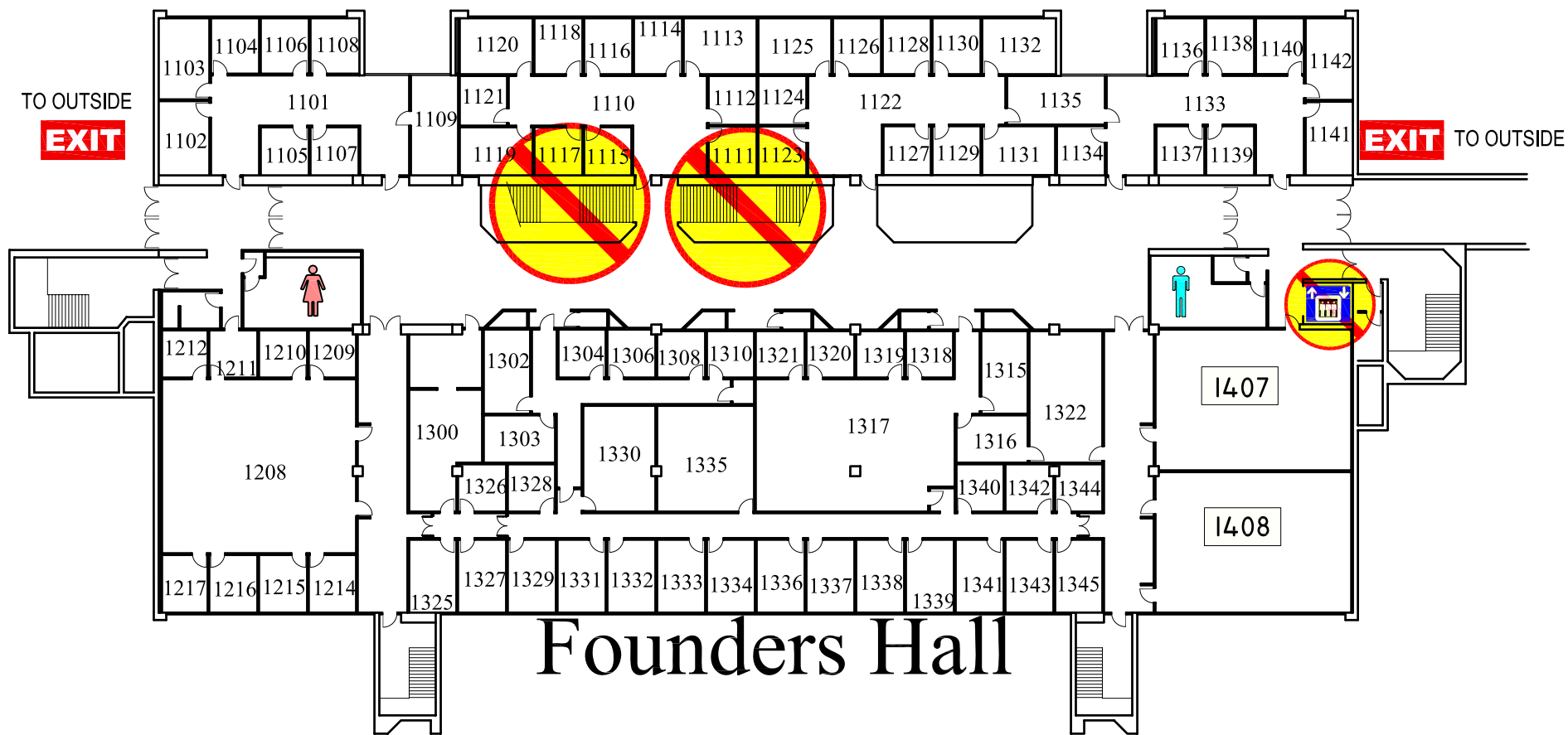
3rd FLOOR

0' 5' 10' 20' 30' 40' 50'-0"

EMERGENCY EXIT PLAN

EXIT IN CASE OF EMERGENCY USE MARKED EXITS **EXIT**

 **DO NOT USE OPEN STAIRS OR ELEVATORS** 



Founders Hall

1st FLOOR

-10' 0' 5' 10' 20' 30' 40'

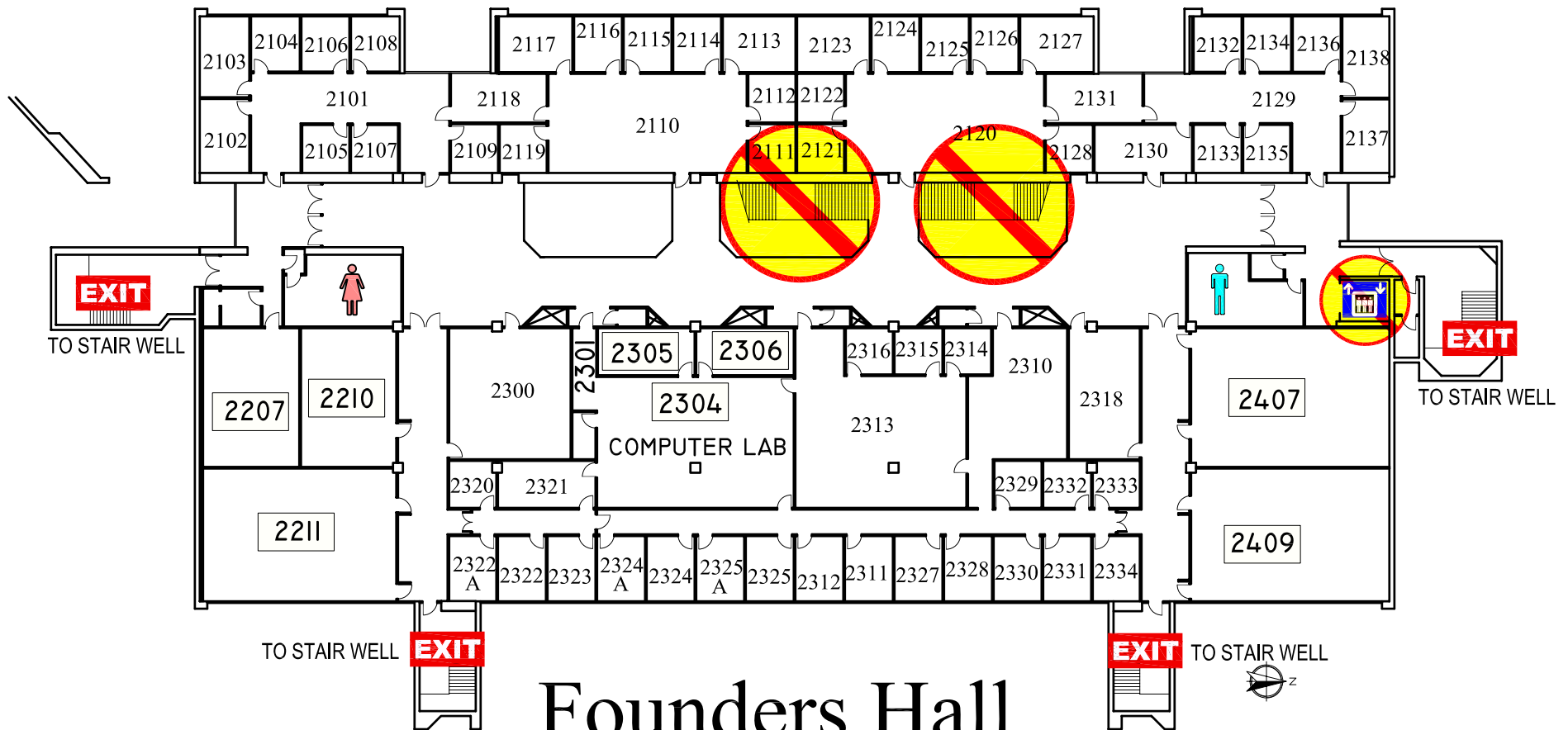


EMERGENCY EXIT PLAN

EXIT IN CASE OF EMERGENCY USE MARKED EXITS **EXIT**

 DO NOT USE OPEN STAIRS OR ELEVATORS 

 WHEELCHAIR USERS ARE TO GO INTO 
STAIR WELLS **EXIT** AND WAIT FOR EMERGENCY PERSONNEL.



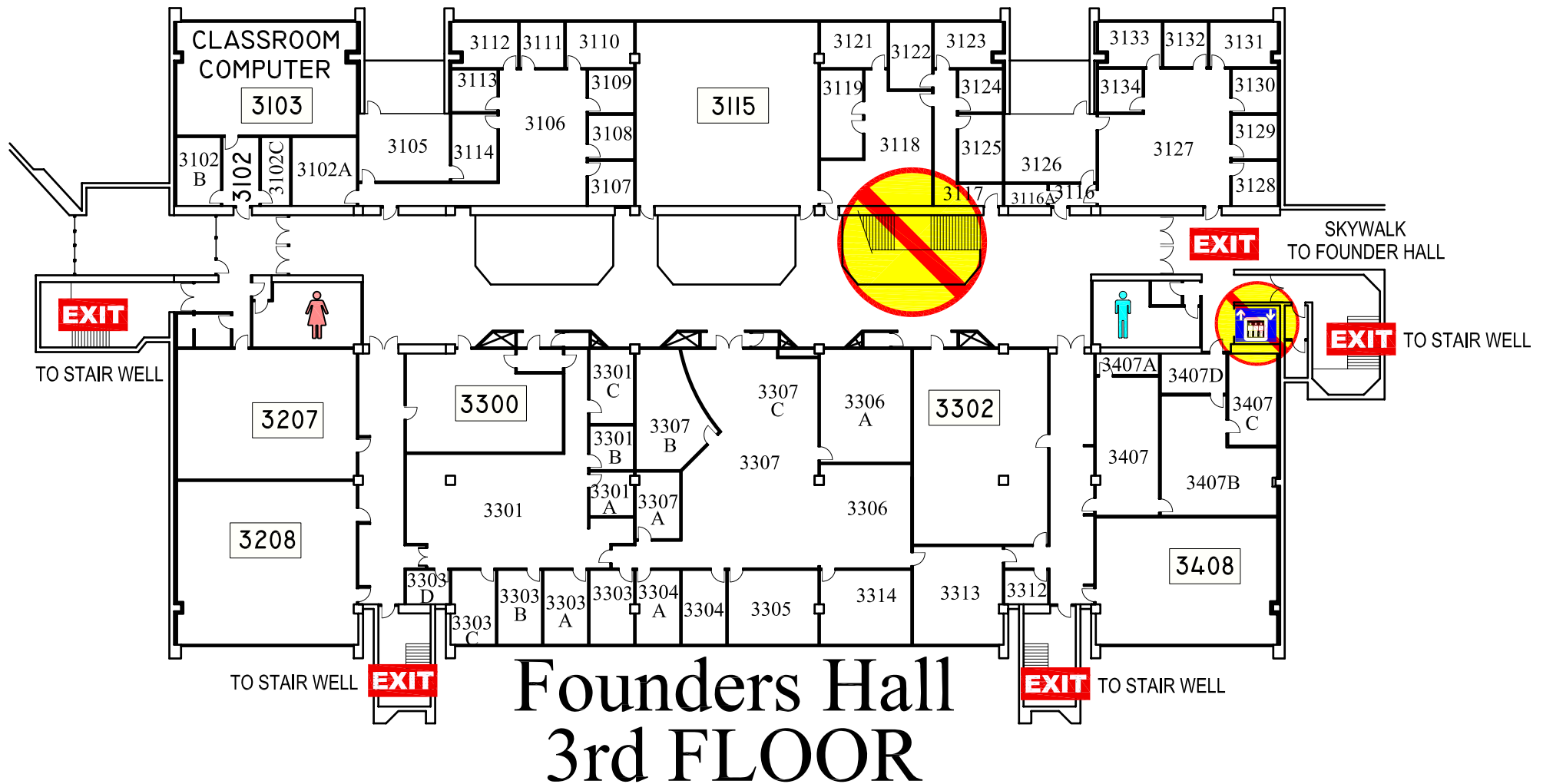
Founders Hall
2nd FLOOR

EMERGENCY EXIT PLAN

EXIT IN CASE OF EMERGENCY USE MARKED EXITS **EXIT**

 **DO NOT USE OPEN STAIRS OR ELEVATORS** 

 WHEELCHAIR USERS ARE TO USE THE SKYWALK OR GO INTO THE STAIR WELLS **EXIT** AND WAIT FOR EMERGENCY PERSONNEL 

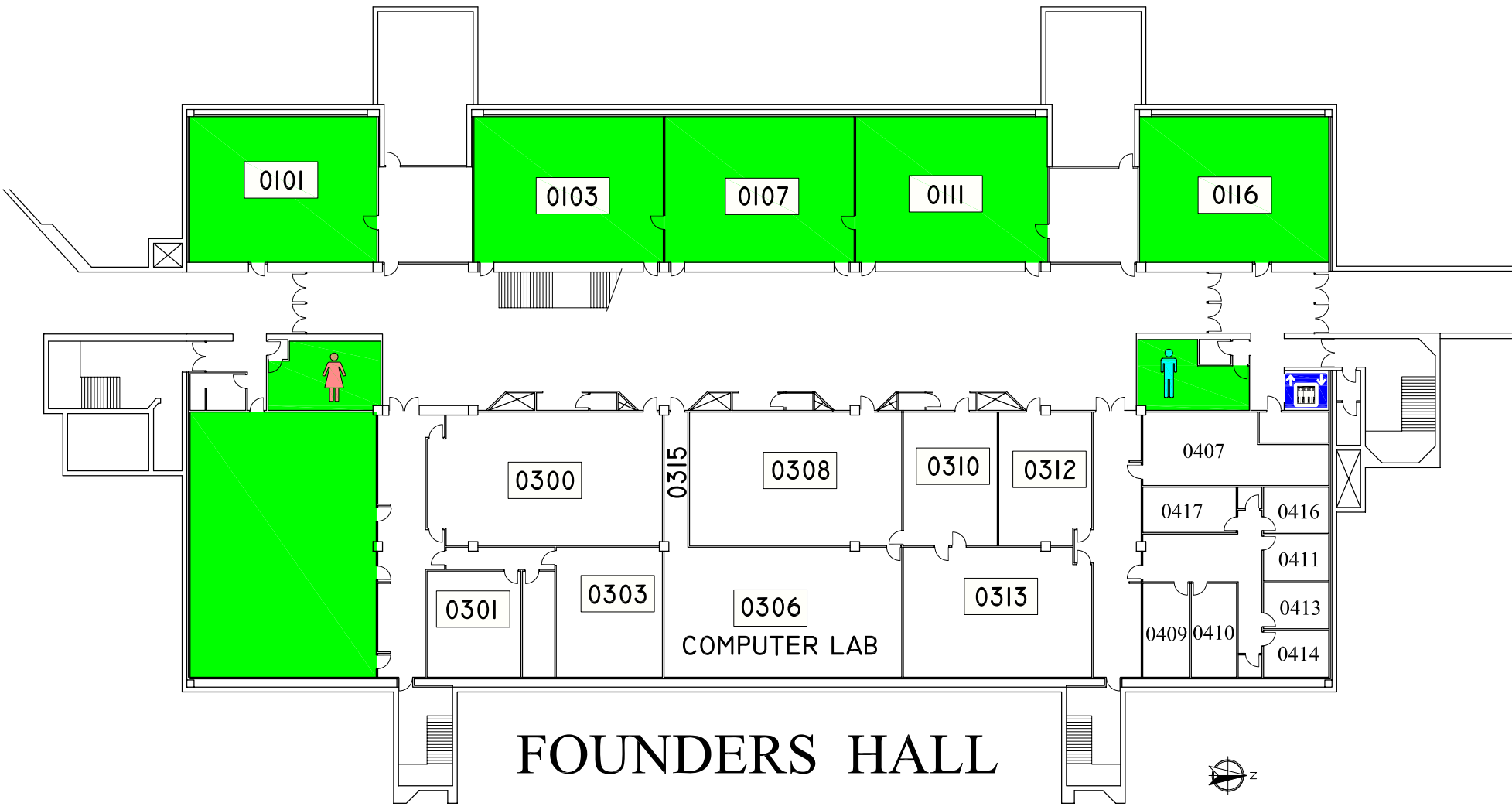


EMERGENCY STORM SHELTERS

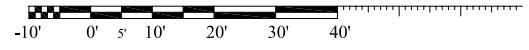
In event of a Tornado Warning everyone should go to a

PRIMARY STORM SHELTERS

located here on the lower level



FOUNDERS HALL LOWER LEVEL

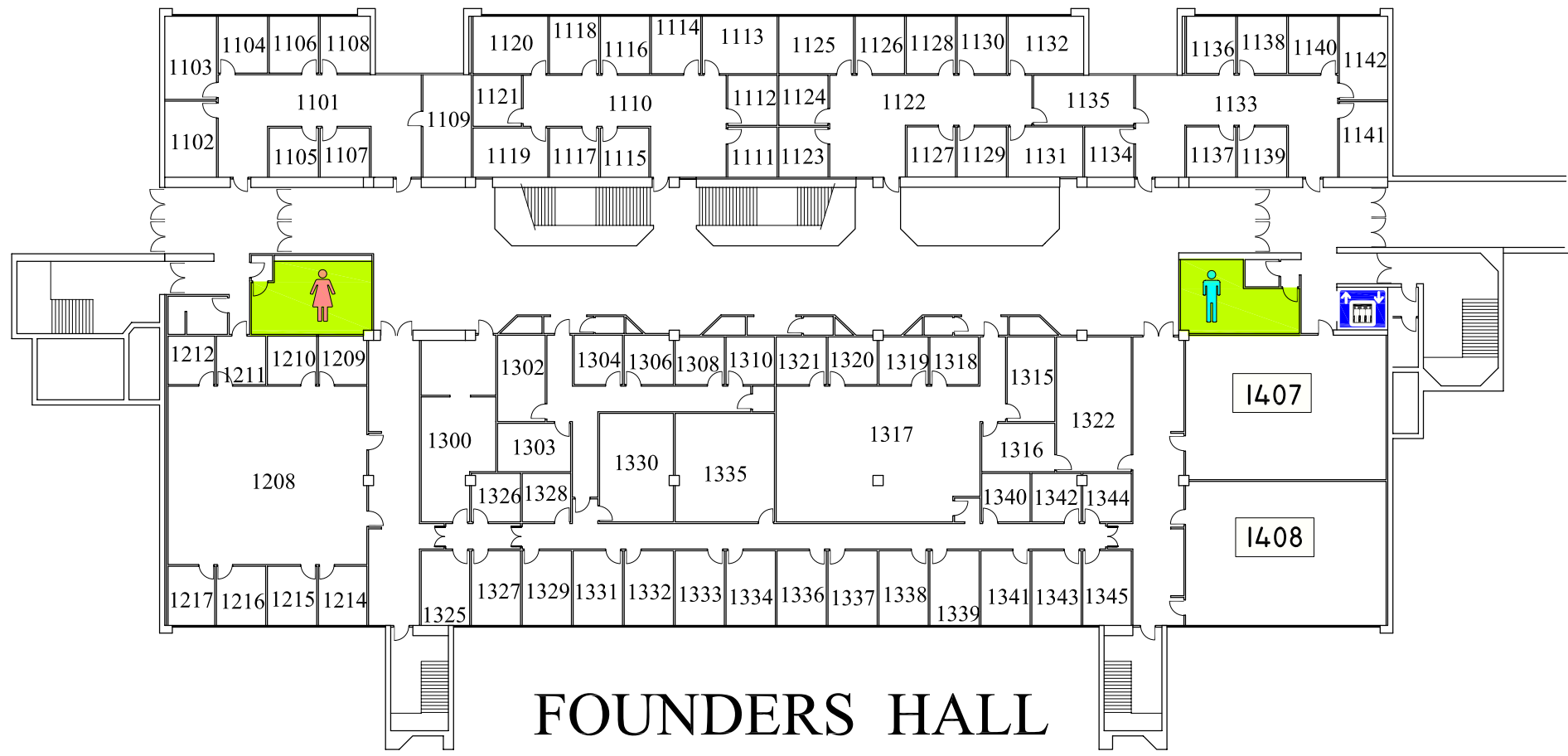


EMERGENCY STORM SHELTERS

In event of a Tornado Warning everyone should go to a Lower Level **PRIMARY SHELTER**

In event you can not get to a Primary Shelter go to a **SECONDARY STORM SHELTER**

located on 1st, 2nd, & 3rd floors



FOUNDERS HALL

1st FLOOR

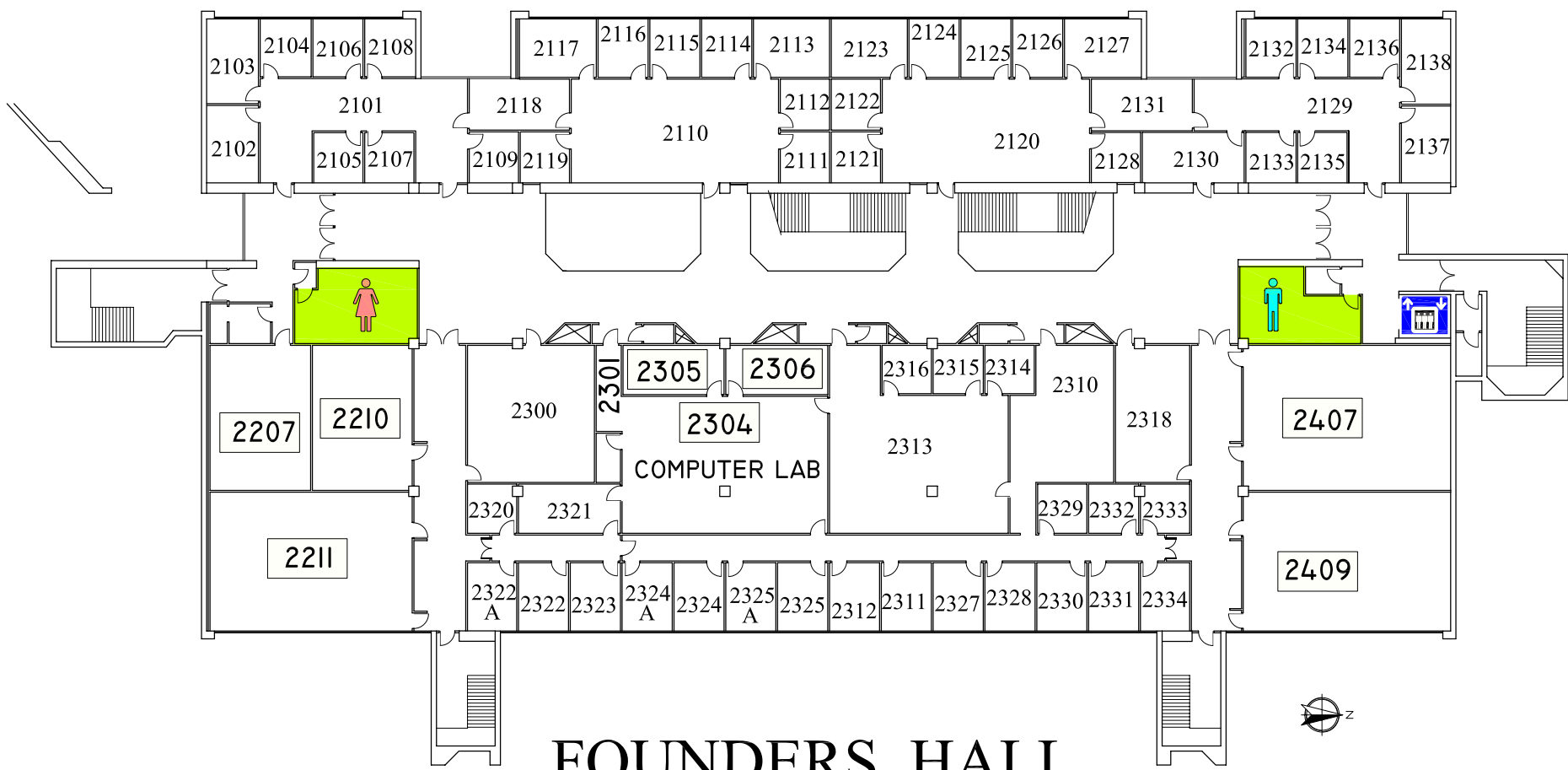


EMERGENCY STORM SHELTERS

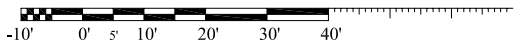
In event of a Tornado Warning everyone should go to a Lower Level **PRIMARY SHELTER**

In event you can not get to a Primary Shelter go to a **SECONDARY STORM SHELTER**

located on 1st, 2nd, & 3rd floors



FOUNDERS HALL 2nd FLOOR

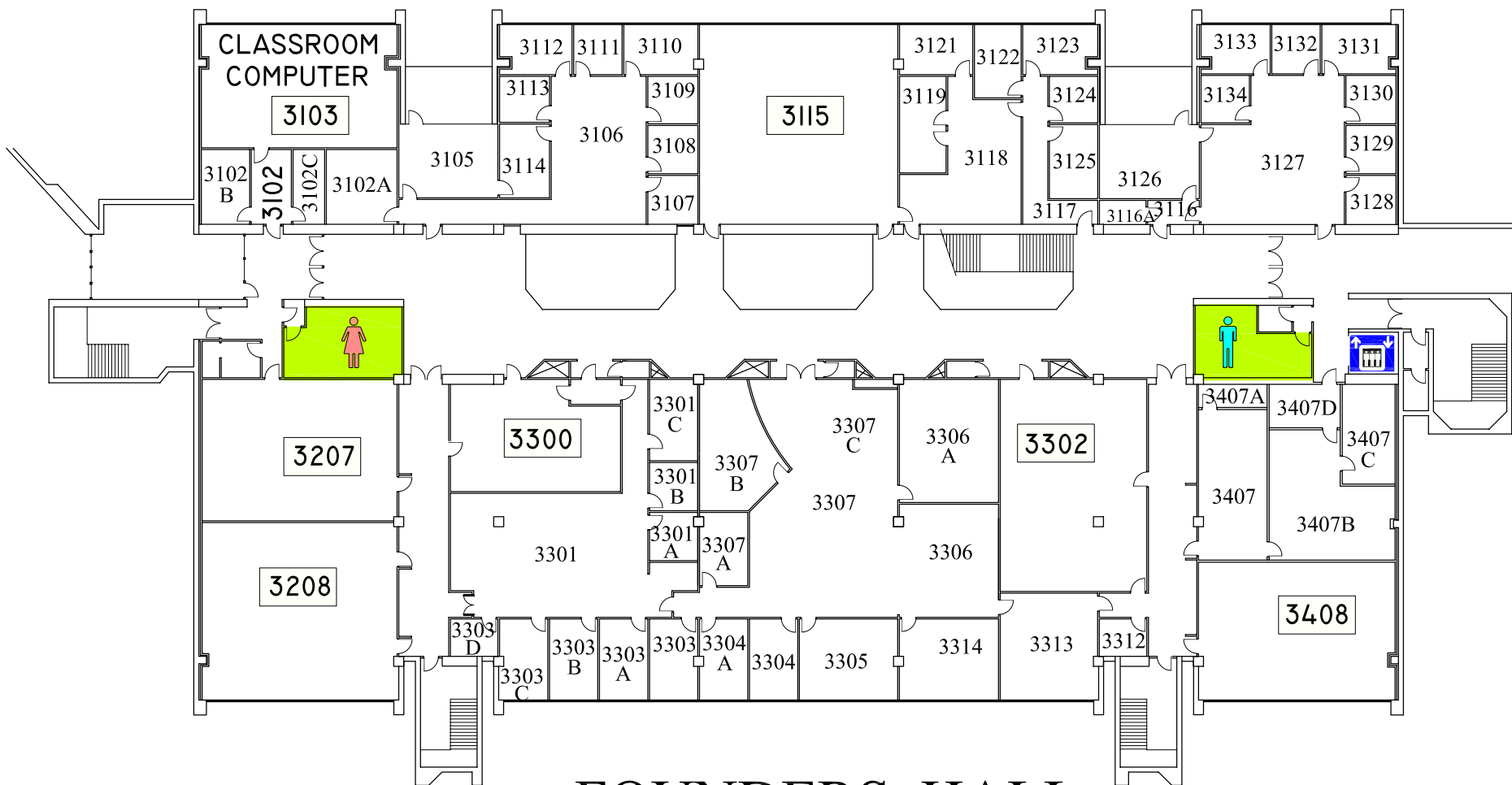


EMERGENCY STORM SHELTERS

In event of a Tornado Warning everyone should go to a Lower Level **PRIMARY SHELTER**

In event you can not get to a Primary Shelter go to a **SECONDARY STORM SHELTER**

located on 1st, 2nd, & 3rd floors



FOUNDERS HALL 3rd FLOOR

