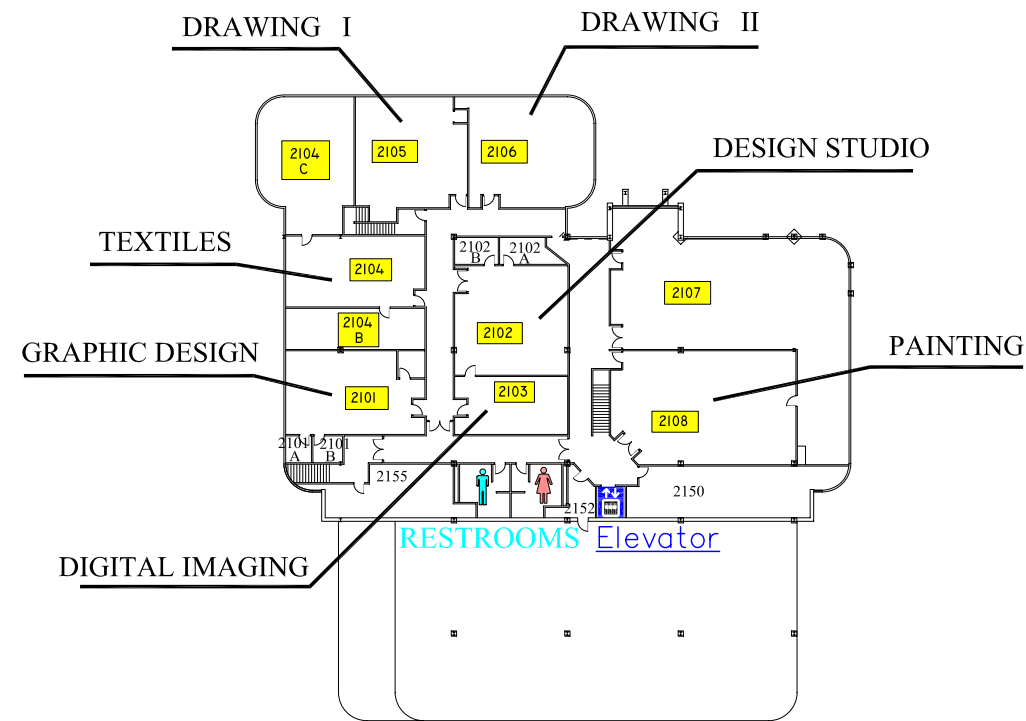
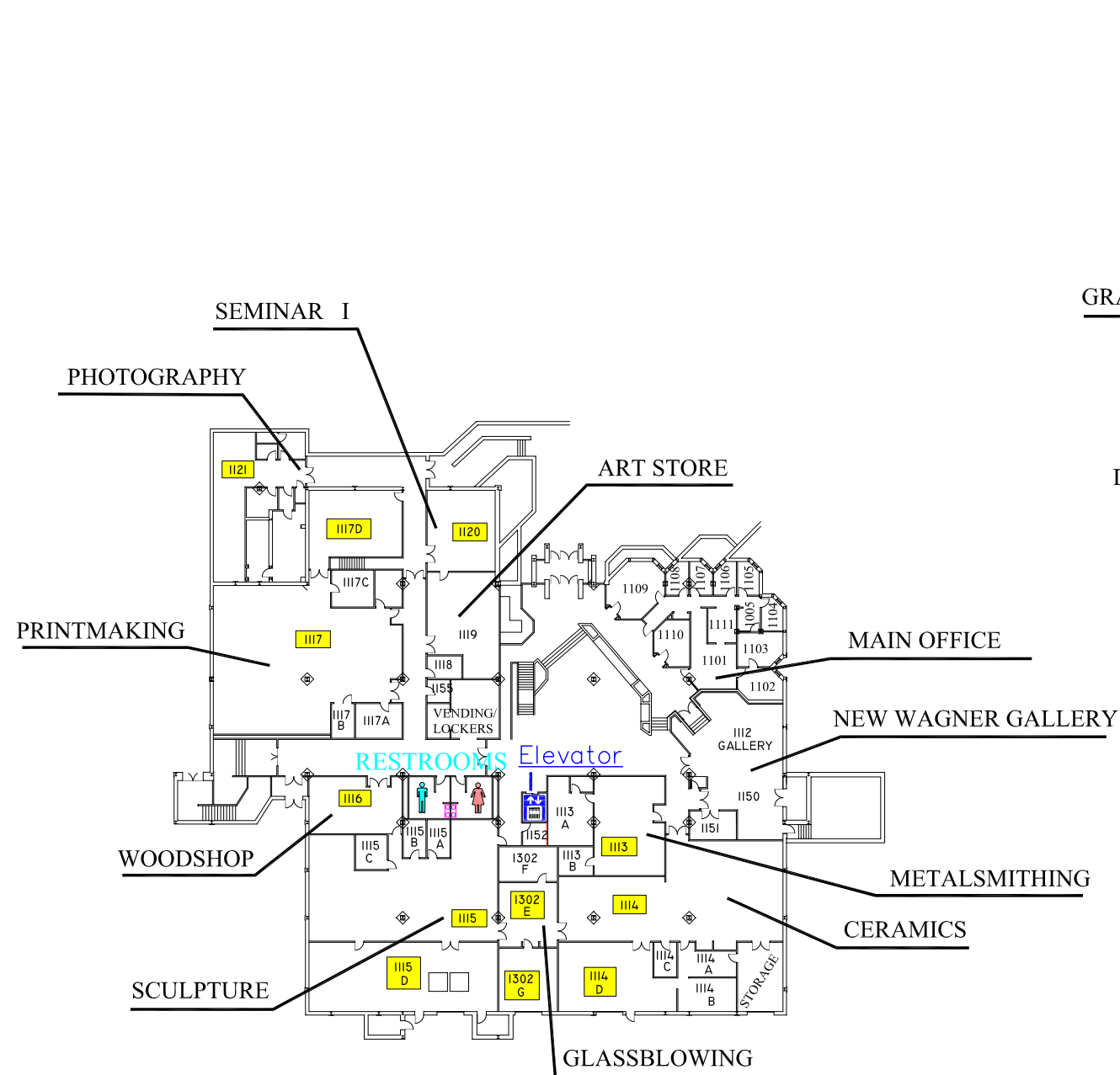


# ART & DESIGN BUILDING

# DIRECTORY



## 1st FLOOR OFFICES

ART STORE	1119
CERAMICS	1114
GLASSBLOWING	1302
MAIN OFFICE	1101
METALSMITHING	1113
NEW WAGNER GALLERY	1112
PHOTOGRAPHY	1121
PRINTMAKING	1117
SEMINAR I	1120
SCULPTURE	1115
WOODSHOP	1116

## 2nd FLOOR OFFICES

DESIGN STUDIO	2102
DIGITAL IMAGING	2103
DRAWING I	2105
DRAWING II	2106
GRAPHIC DESIGN	2101
PAINTING	2108
TEXTILES	2104

### LEGEND:

**CLASSROOM**

**LAB**

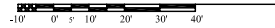
**OFFICE**

**RESTROOMS**

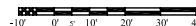
**Elevator**



**1st FLOOR**

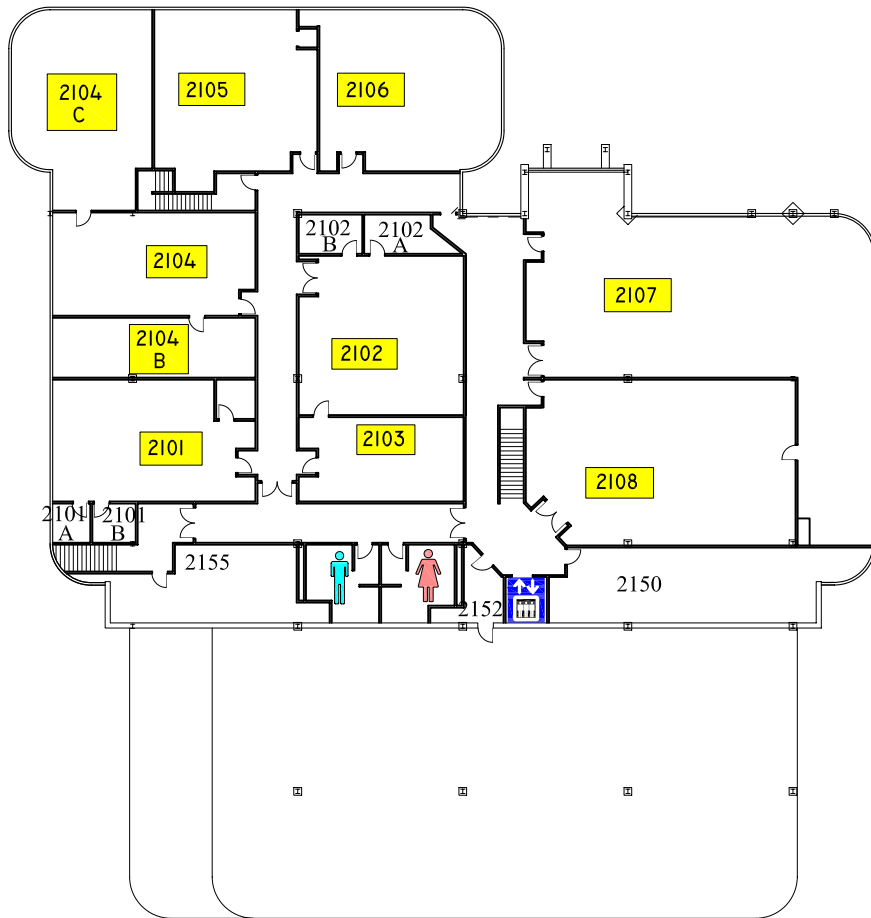


**2nd FLOOR**

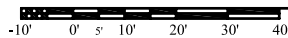




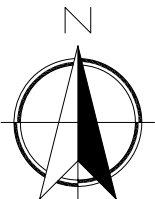
# ART & DESIGN BUILDING



## 2nd FLOOR



- |                 |           |
|-----------------|-----------|
| Design Studio   | Room 2102 |
| Digital Imaging | Room 2103 |
| Drawing I       | Room 2105 |
| Drawing II      | Room 2106 |
| Graphic Design  | Room 2101 |
| Painting        | Room 2108 |
| Textiles        | Room 2104 |

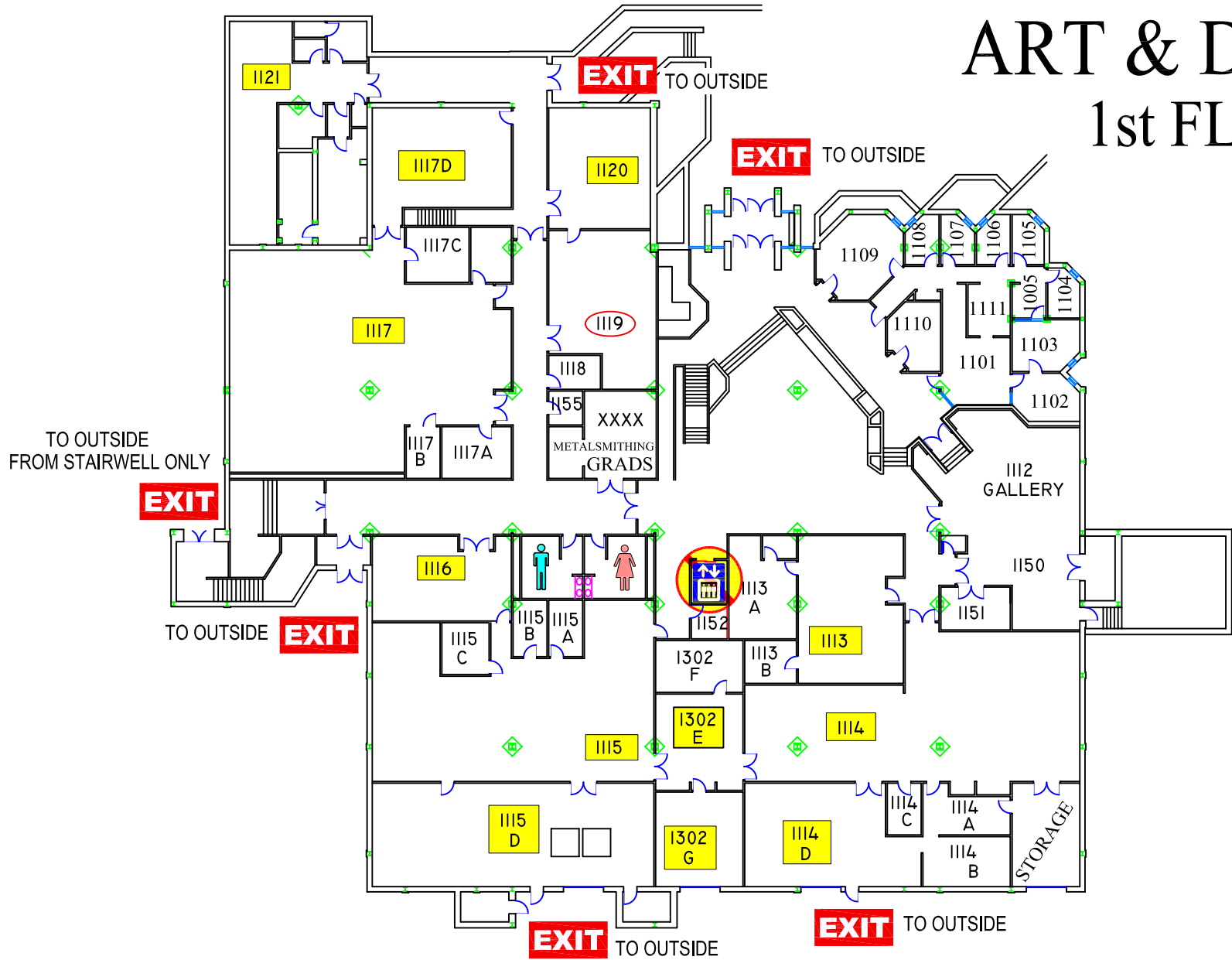


# EMERGENCY EXIT PLAN

**EXIT** IN CASE OF EMERGENCY USE MARKED EXITS **EXIT**

 **DO NOT USE ELEVATORS** 

## ART & DESIGN 1st FLOOR



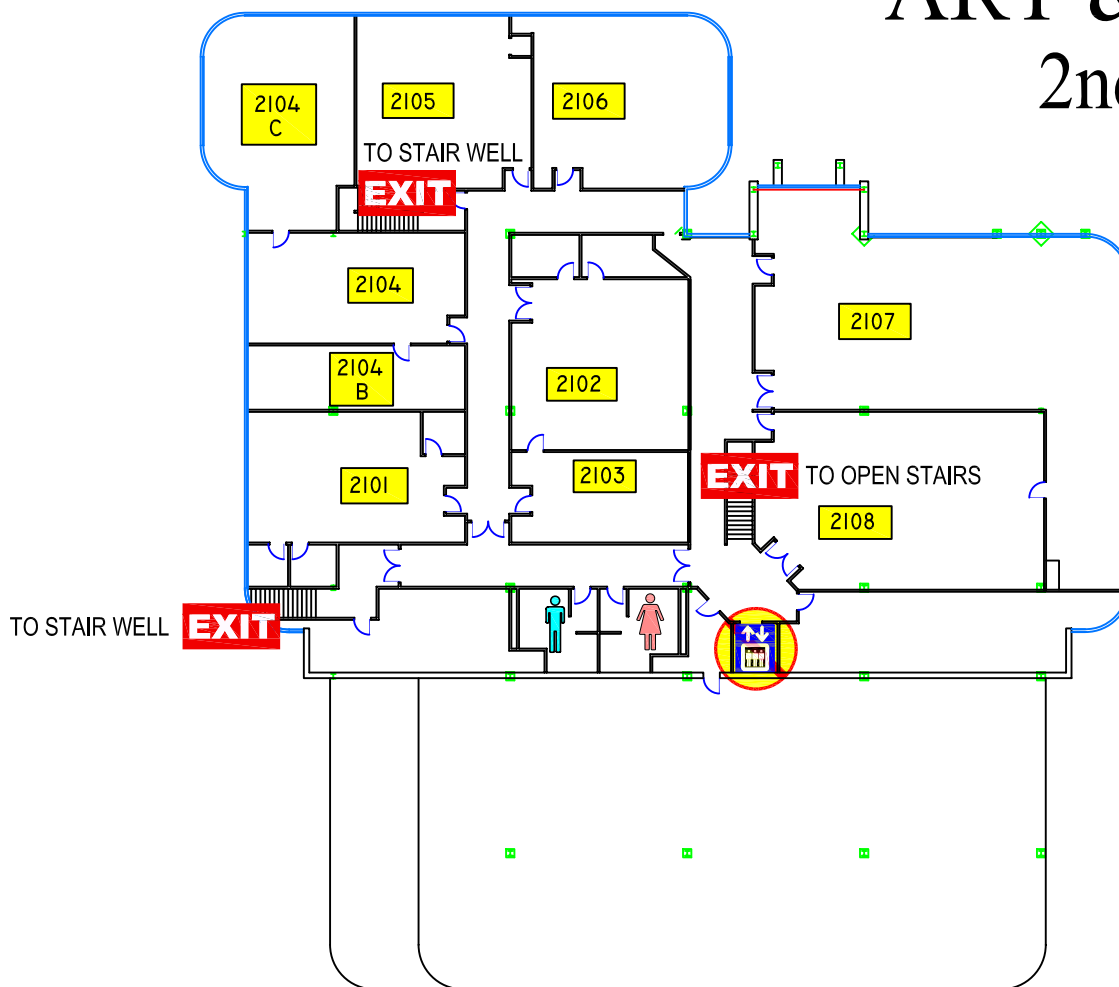
# EMERGENCY EXIT PLAN

**EXIT** IN CASE OF EMERGENCY USE MARKED EXITS **EXIT**

 **DO NOT USE ELEVATORS** 

 **WHEELCHAIR USERS ARE TO GO INTO**   
**STAIR WELLS** **EXIT** **AND WAIT FOR EMERGENCY PERSONNEL.**

ART & DESIGN  
2nd FLOOR



# EMERGENCY STORM SHELTERS

In event of a Tornado Warning everyone should go to a

**PRIMARY STORM SHELTERS**

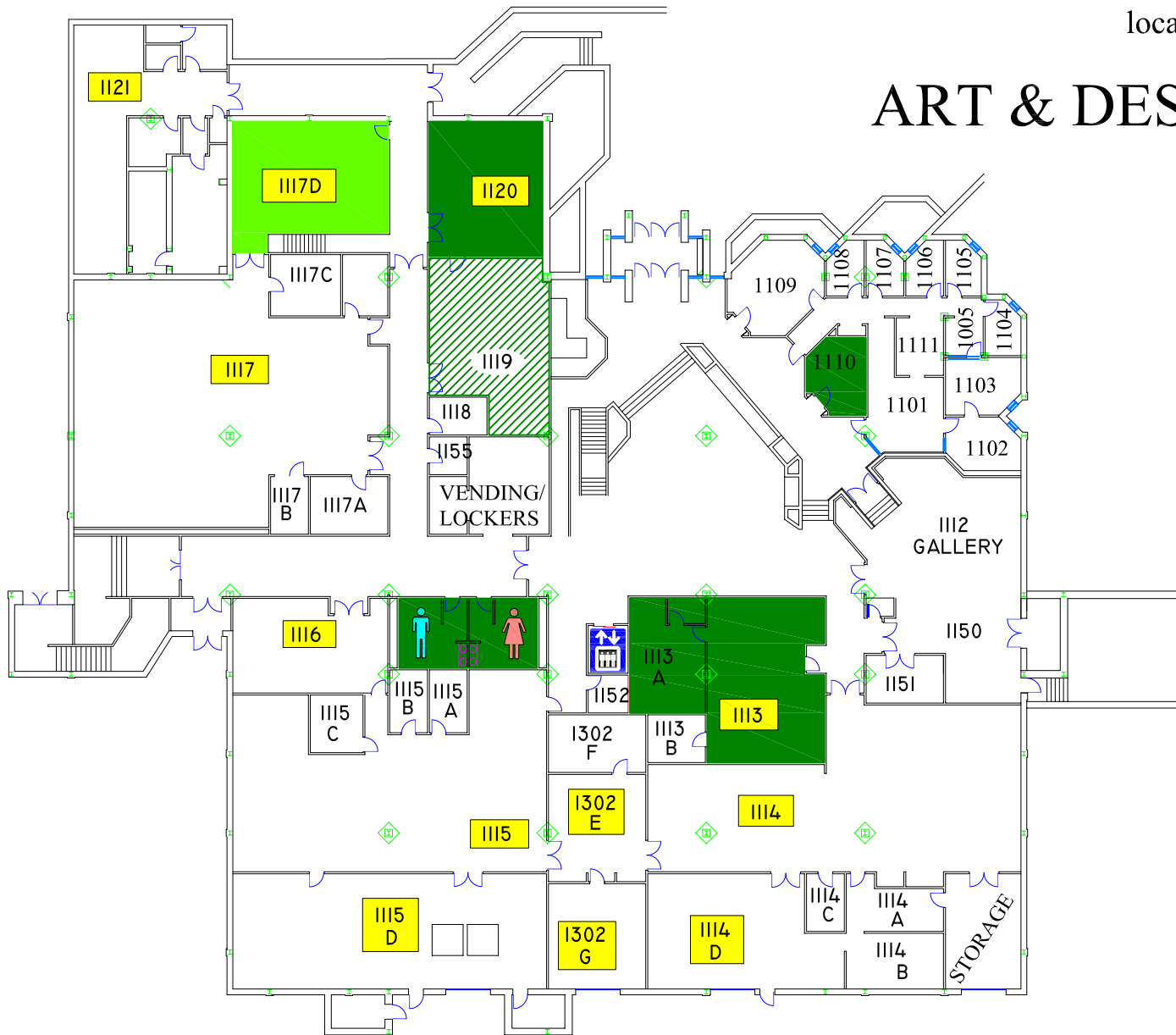
In event you can not get to a Primary Shelter go to a

**SECONDARY STORM SHELTER**

located on 1st and 2nd floors

## ART & DESIGN BUILDING

### 1st FLOOR

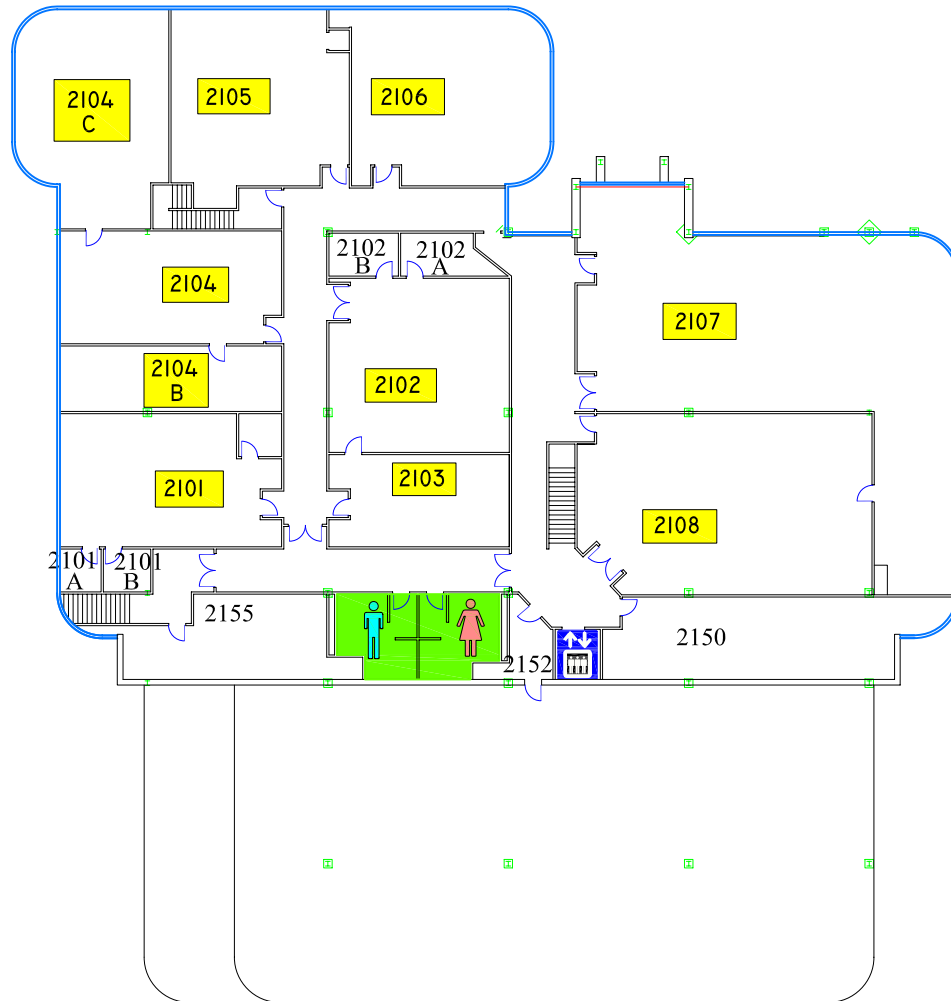


# EMERGENCY STORM SHELTERS

In event of a Tornado Warning everyone should go to a Lower Level **PRIMARY SHELTER**

In event you can not get to a Primary Shelter go to a **SECONDARY STORM SHELTER**

located on 1st, 2nd, & 3rd floors



ART & DESIGN BUILDING  
2nd FLOOR

