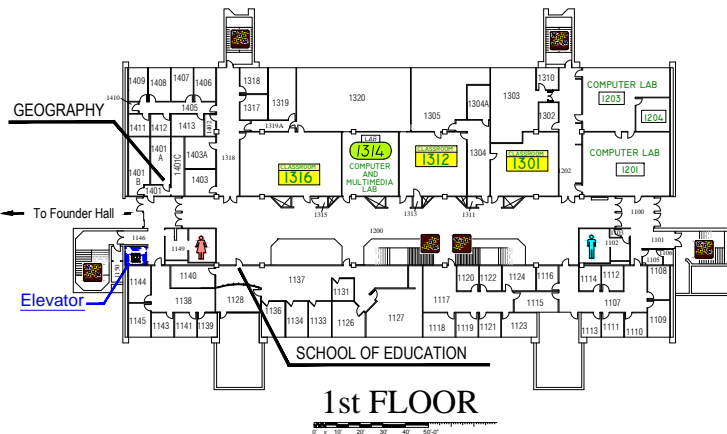
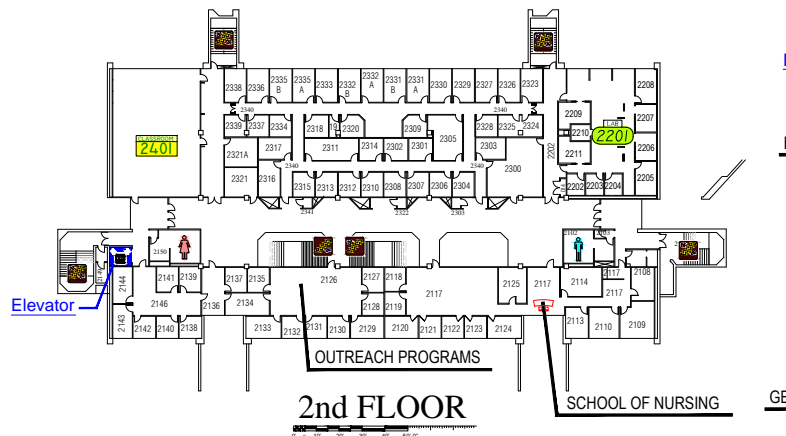


ALUMNI HALL

SEND COMMENTS TO: donande@siue.edu Facilities Management
 Maps & Floor Plans
www.siu.edu/FACILITIES/campmap/index.htm



DIRECTORY

LOWER LEVEL

Illinois Education Research Council	0107
PROFESSIONAL DEVELOPMENT CENTER	0138
PSYCHOLOGY	0118

1st FLOOR OFFICES

GEOGRAPHY	1401
SCHOOL OF EDUCATION	1125

2nd FLOOR OFFICES

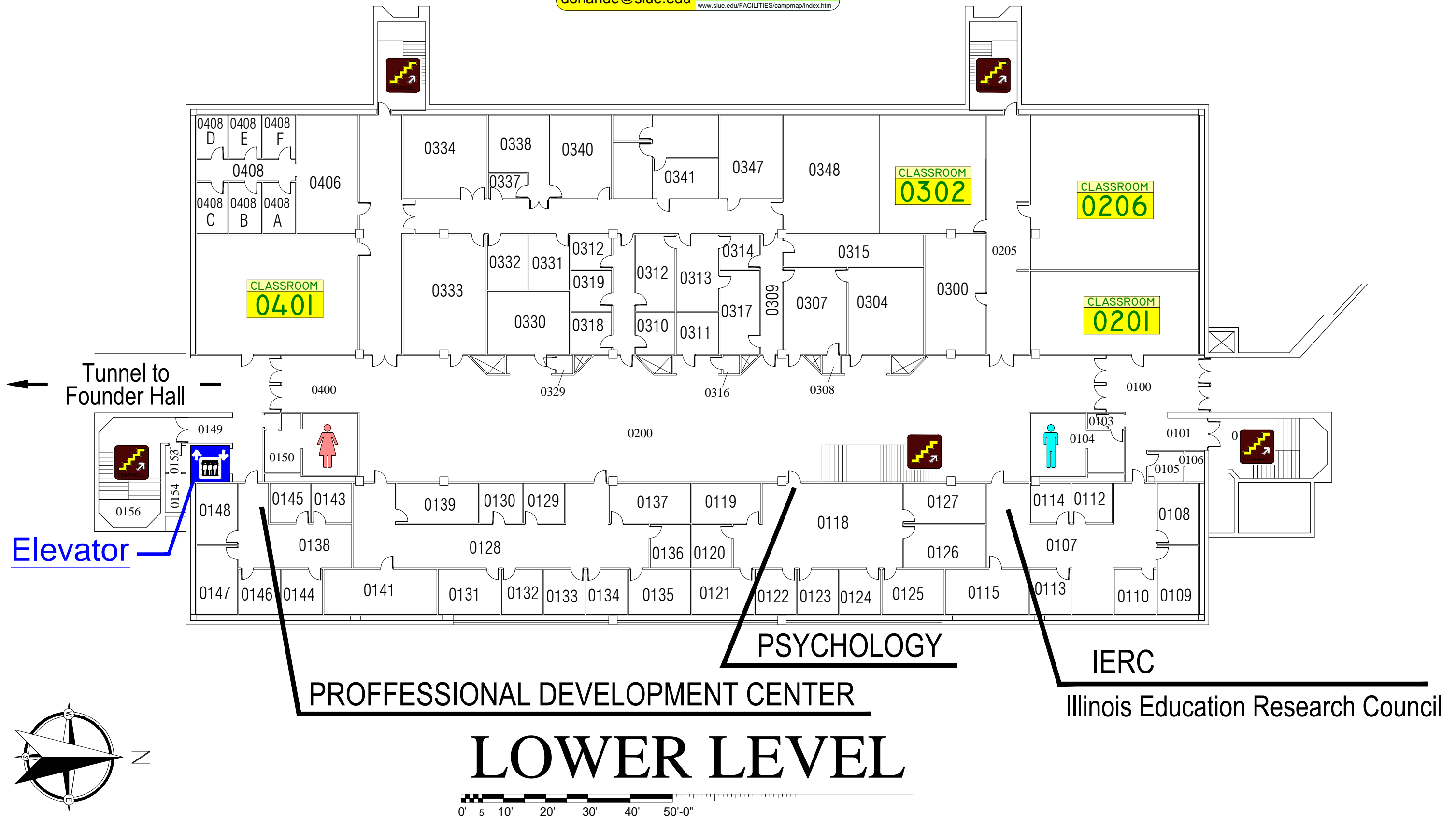
SCHOOL OF NURSING	2333
OUTREACH PROGRAMS	2126

3rd FLOOR OFFICES

ECONOMICS AND FINANCE	3129
AEROSPACE STUDIES	3340
ART & DESIGN	3119
SPEECH COMMUNICATION	3108

Alumni Hall

SEND COMMENTS TO: donande@siue.edu Facilities Management
Maps & Floor Plans
www.siu.edu/FACILITIES/campmap/index.htm

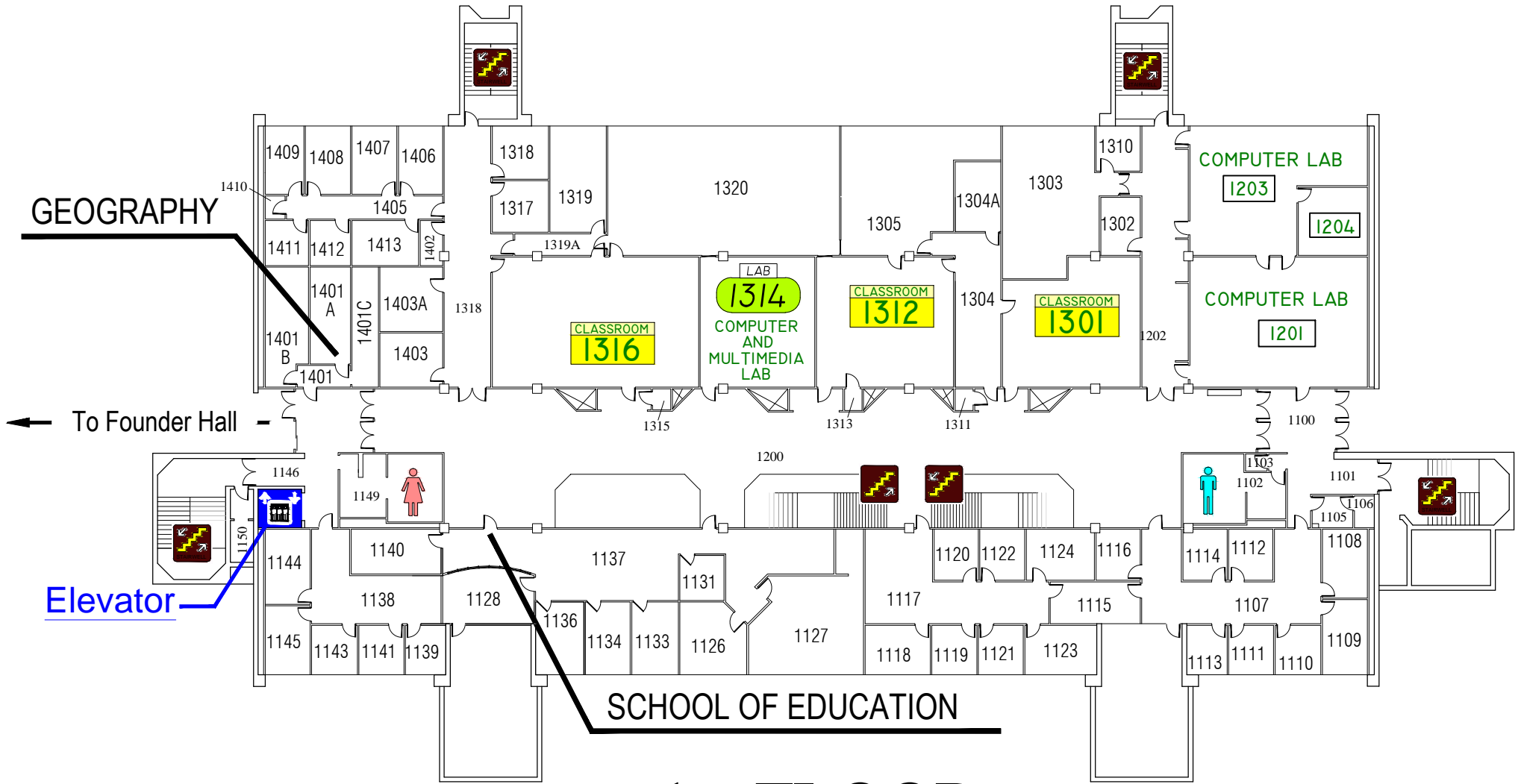


LOWER LEVEL

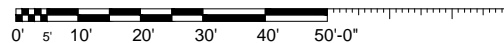
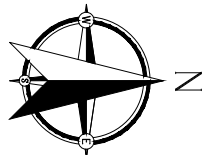
Illinois Education Research Council

Alumni Hall

SEND COMMENTS TO: donande@siue.edu Facilities Management
Maps & Floor Plans
www.siu.edu/FACILITIES/campmap/index.htm



1st FLOOR

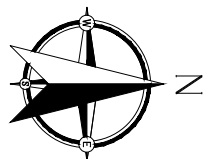
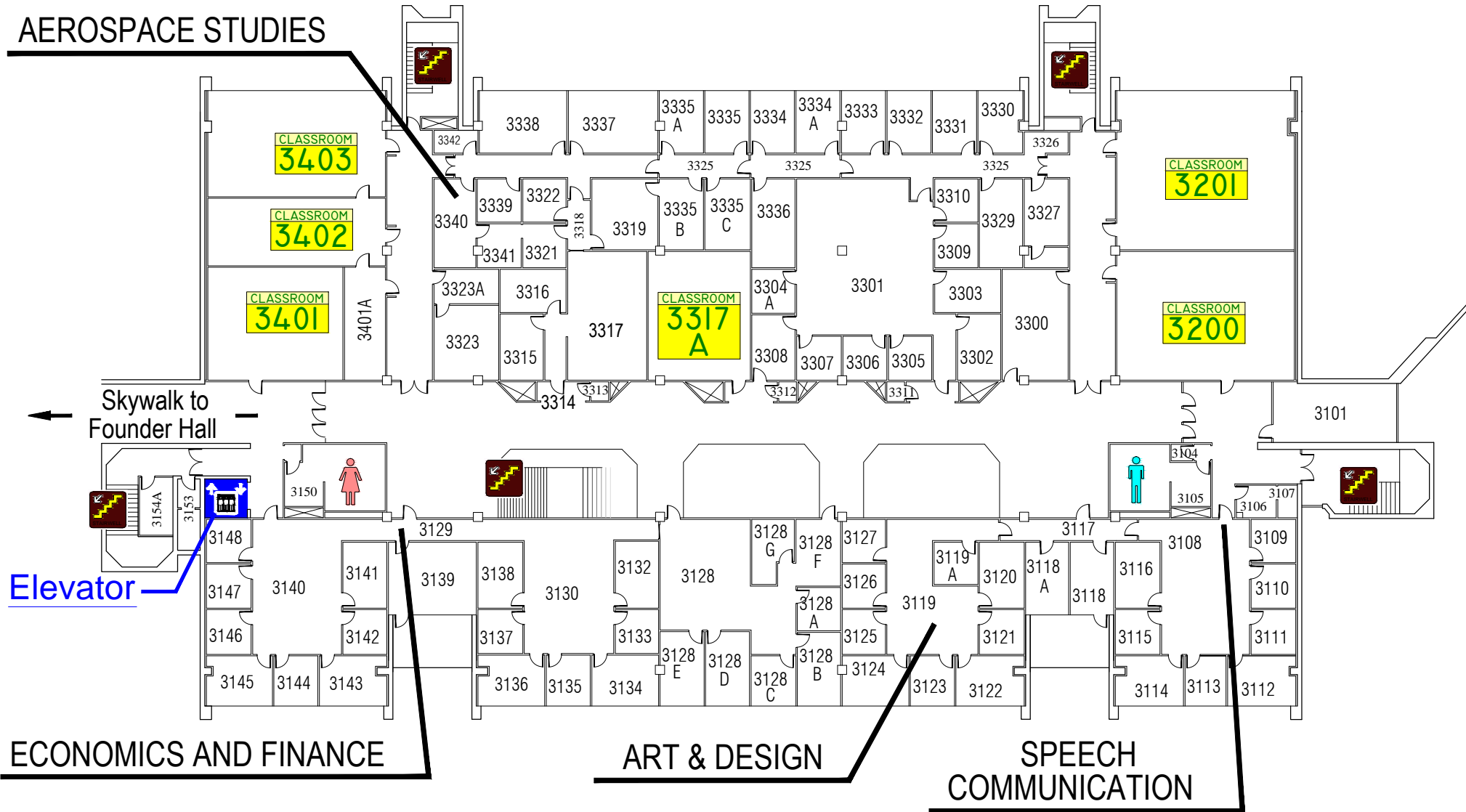


Alumni Hall

SEND COMMENTS TO:
donande@siue.edu

Facilities Management
Maps & Floor Plans
www.siu.edu/FACILITIES/campmap/index.htm

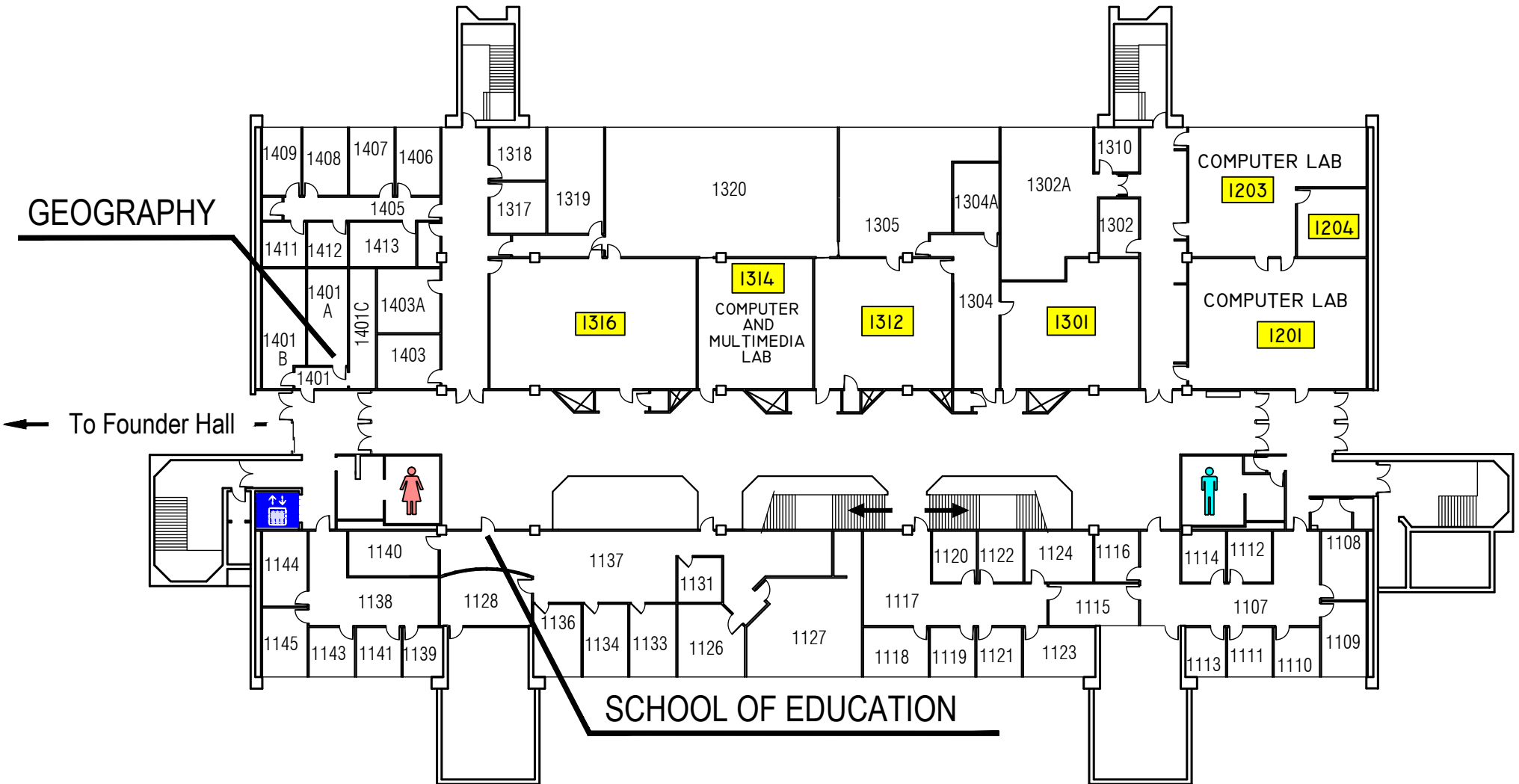
AEROSPACE STUDIES



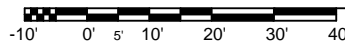
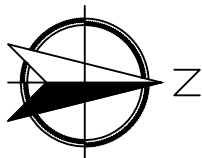
3rd FLOOR

0' 5' 10' 20' 30' 40' 50'-0"

Alumni Hall



1st FLOOR



EMERGENCY STORM SHELTERS

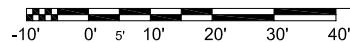
In event of a Tornado Warning everyone should go to a

PRIMARY STORM SHELTERS

located here on the lower level



ALUMNI HALL LOWER LEVEL

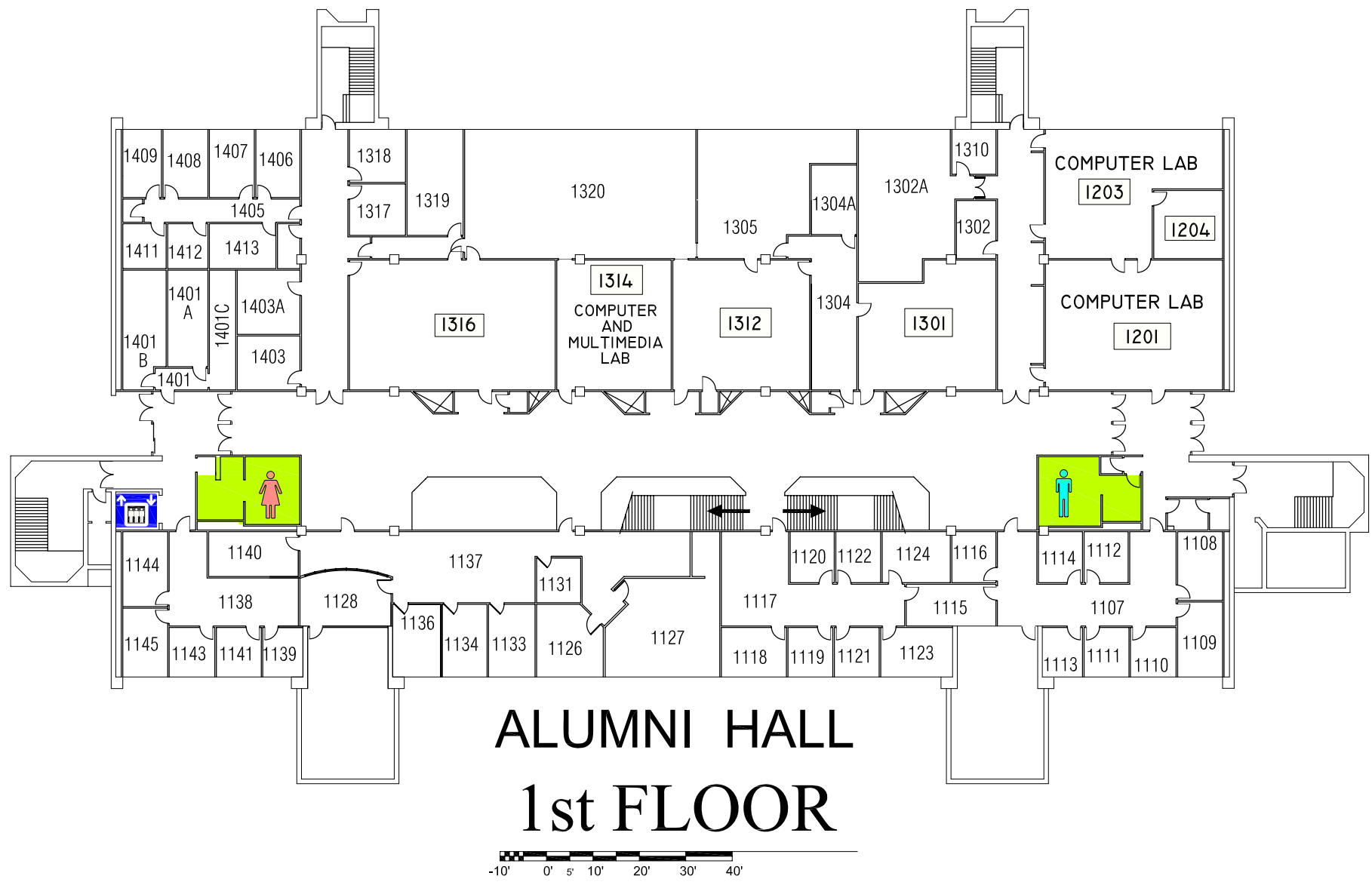


EMERGENCY STORM SHELTERS

In event of a Tornado Warning everyone should go to a Lower Level **PRIMARY SHELTER**

In event you can not get to a Primary Shelter go to a **SECONDARY STORM SHELTER**

located on 1st, 2nd, & 3rd floors

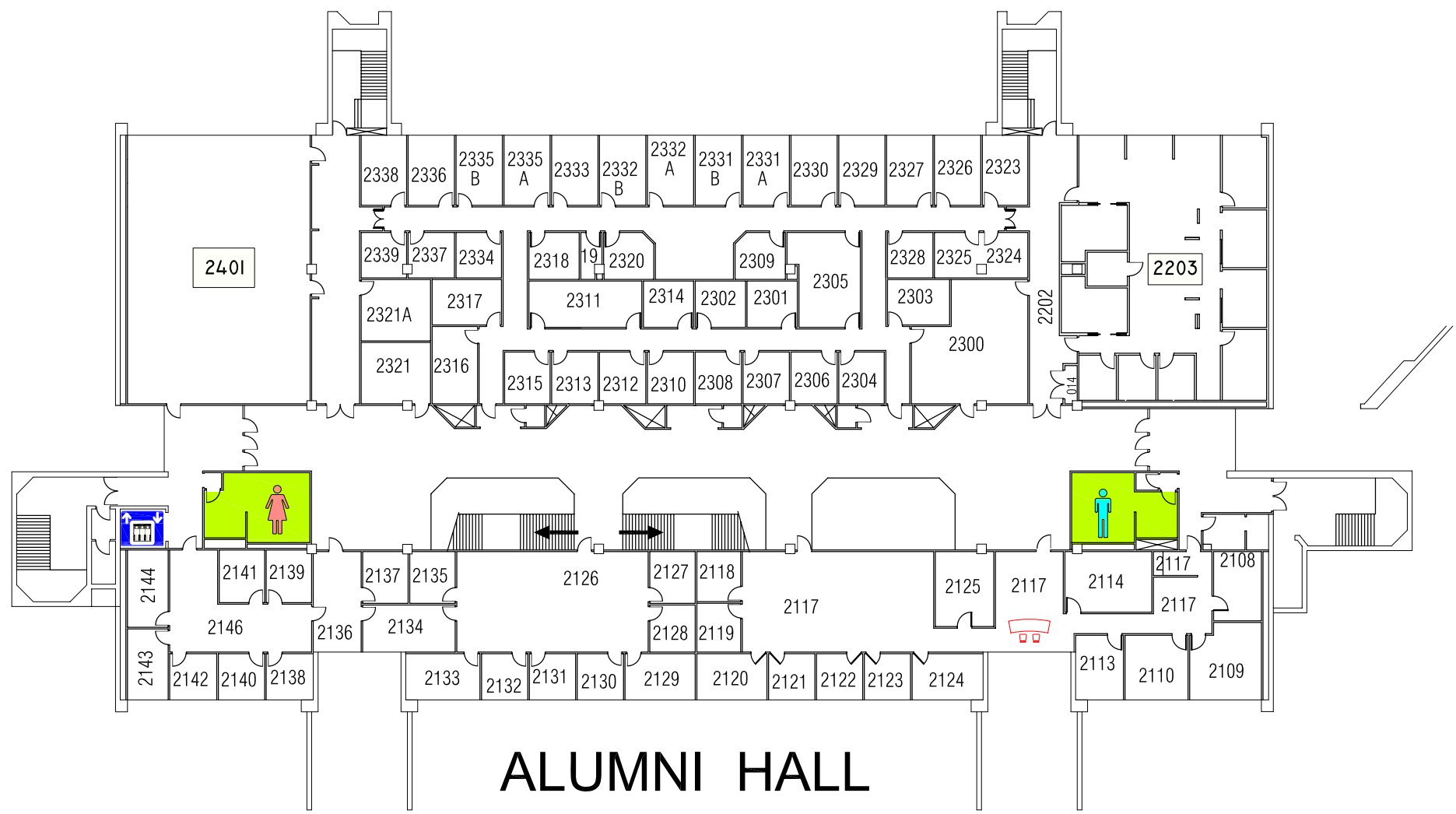


EMERGENCY STORM SHELTERS

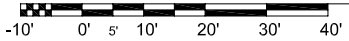
In event of a Tornado Warning everyone should go to a Lower Level **PRIMARY SHELTER**

In event you can not get to a Primary Shelter go to a **SECONDARY STORM SHELTER**

located on 1st, 2nd, & 3rd floors



ALUMNI HALL 2nd FLOOR

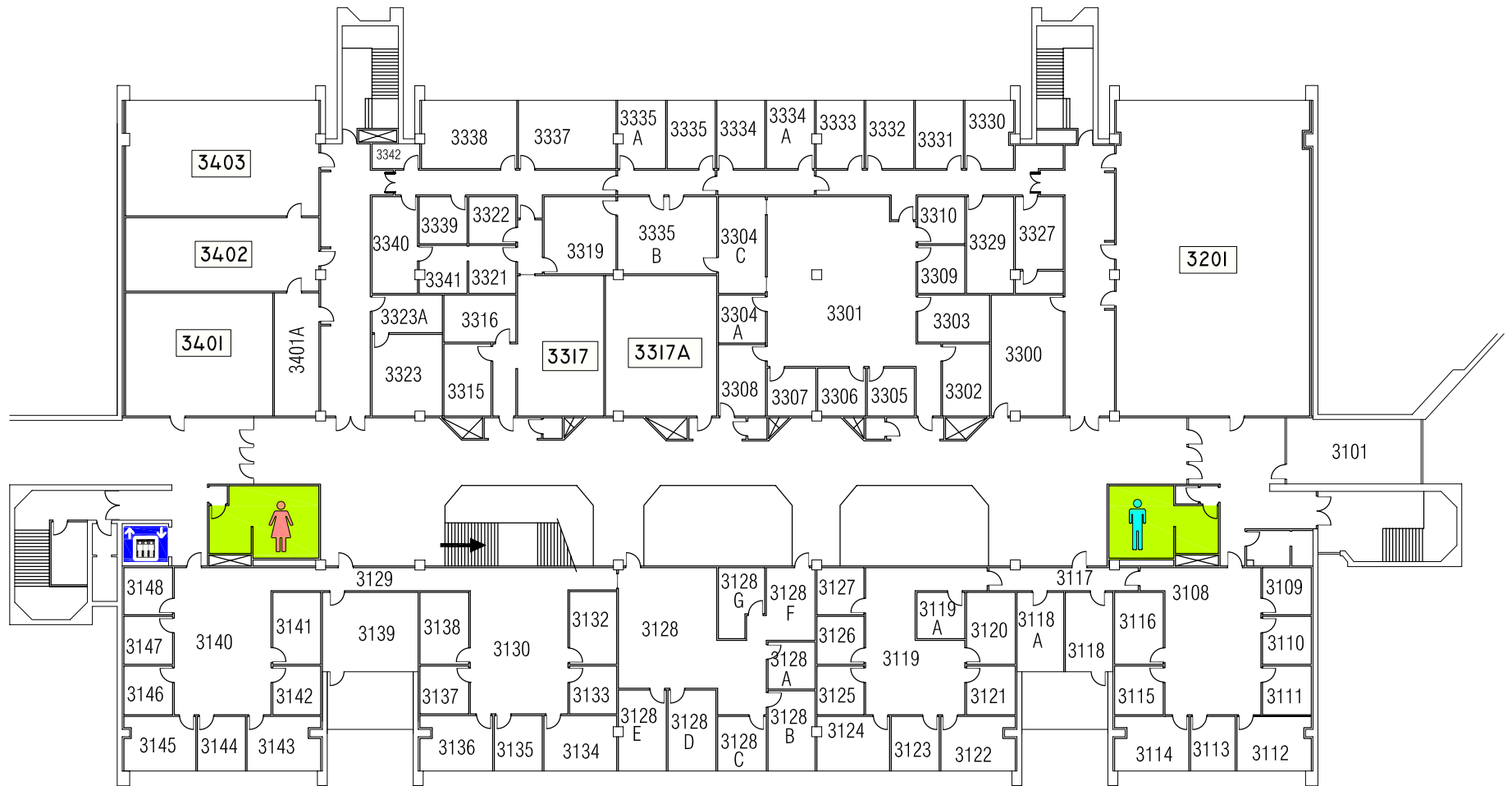


EMERGENCY STORM SHELTERS

In event of a Tornado Warning everyone should go to a Lower Level **PRIMARY SHELTER**

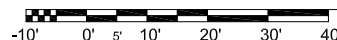
In event you can not get to a Primary Shelter go to a **SECONDARY STORM SHELTER**

located on 1st, 2nd, & 3rd floors

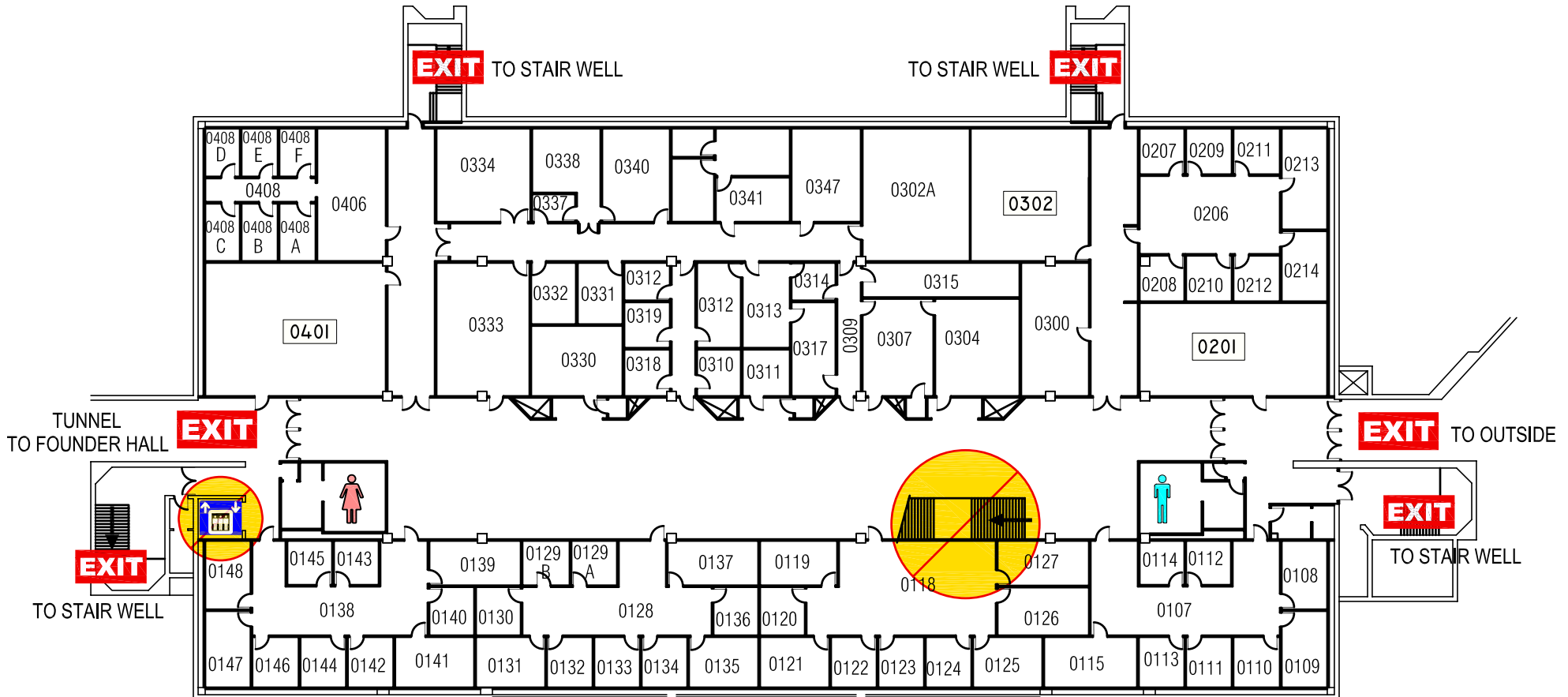


ALUMNI HALL

3rd FLOOR



EMERGENCY EXIT PLAN



Alumni Hall LOWER LEVEL

EXIT IN CASE OF EMERGENCY USE MARKED EXITS **EXIT**

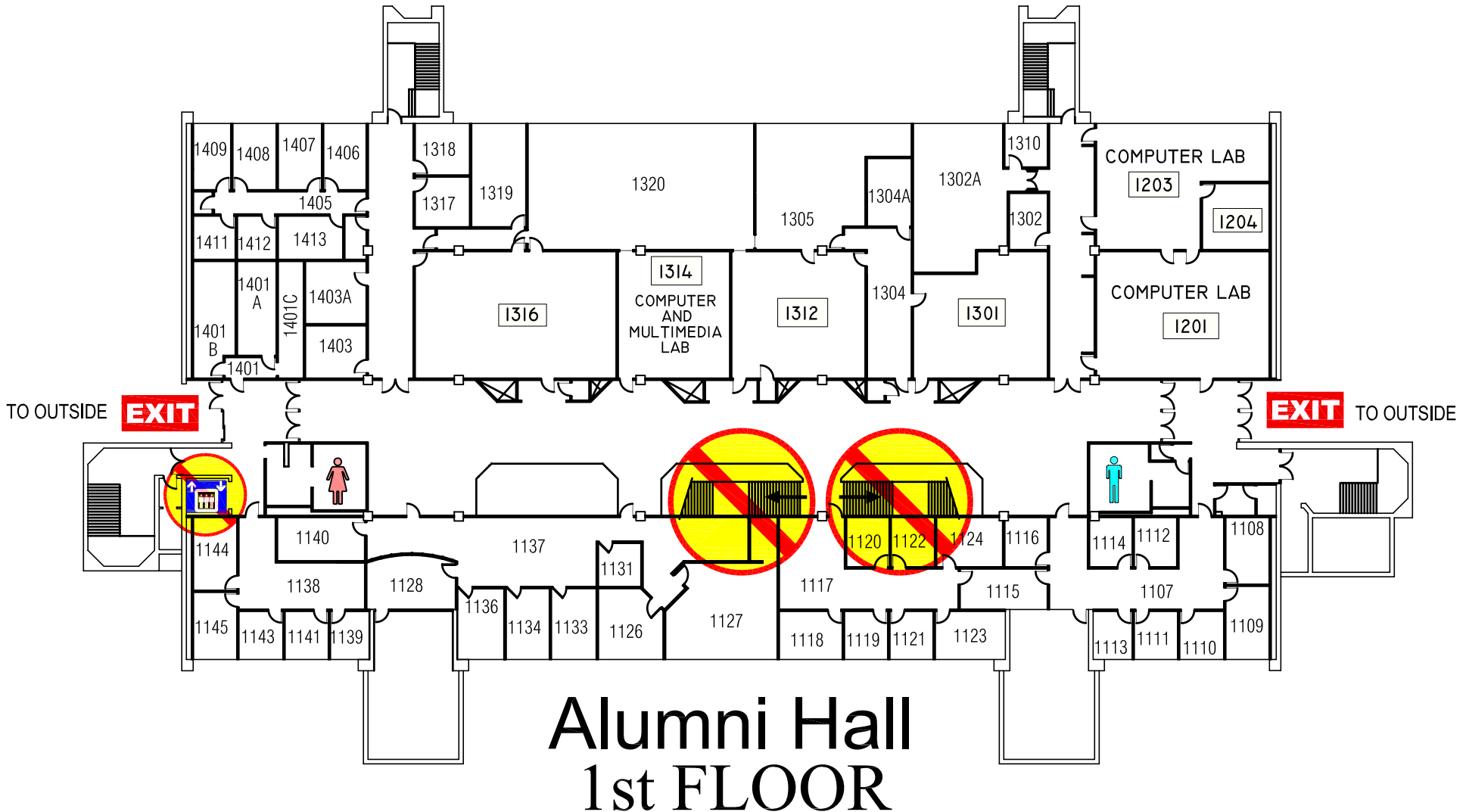
 DO NOT USE OPEN STAIRS OR ELEVATORS 

 WHEELCHAIR USERS ARE TO GO TO A **EXIT** AND IF POSSIBLE AVOID (**EXIT** TO STAIR WELL) 

EMERGENCY EXIT PLAN

EXIT IN CASE OF EMERGENCY USE MARKED EXITS **EXIT**

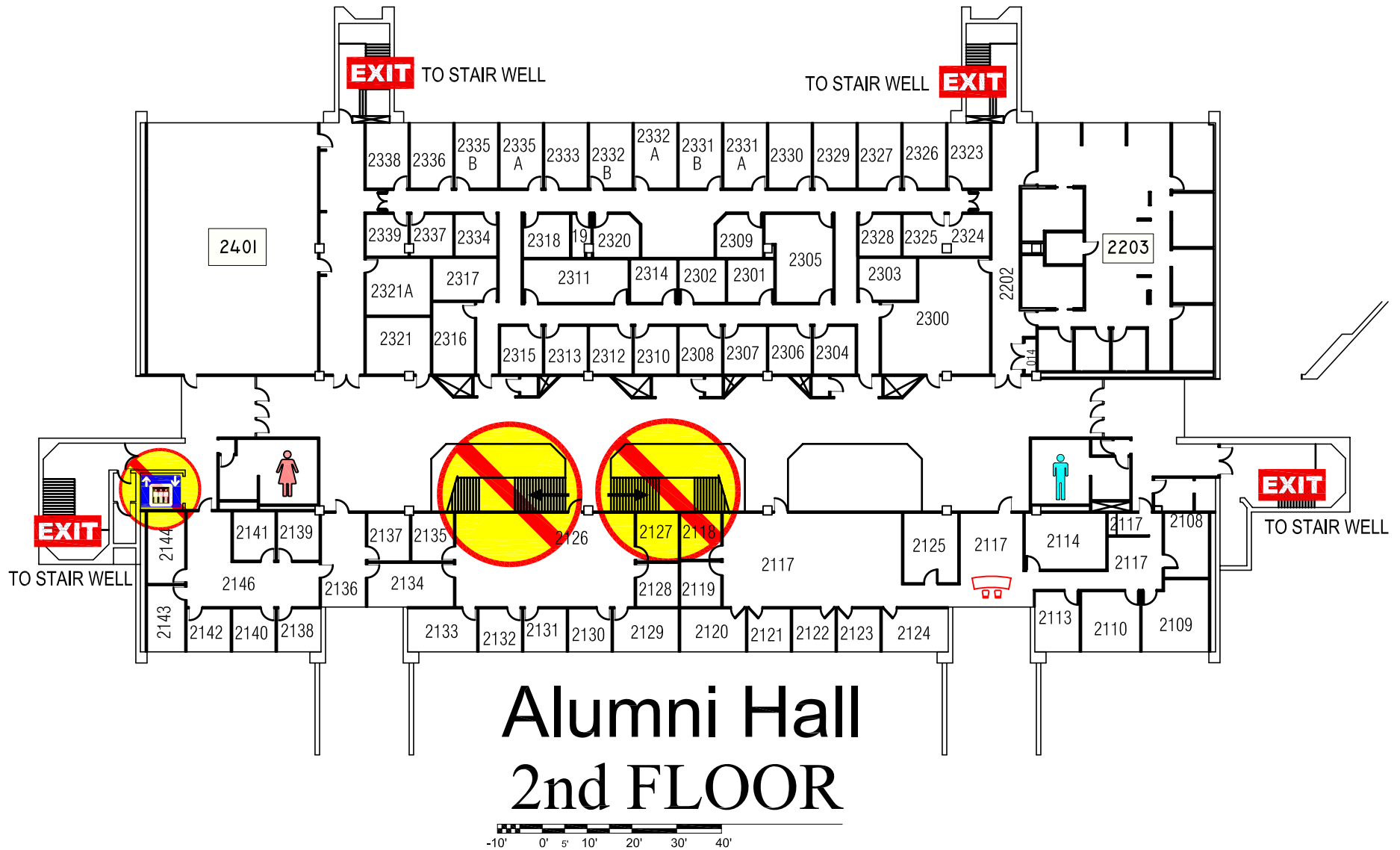
 **DO NOT USE OPEN STAIRS OR ELEVATORS** 



-10' 0' 5' 10' 20' 30' 40'

Alumni Hall
1st FLOOR

EMERGENCY EXIT PLAN



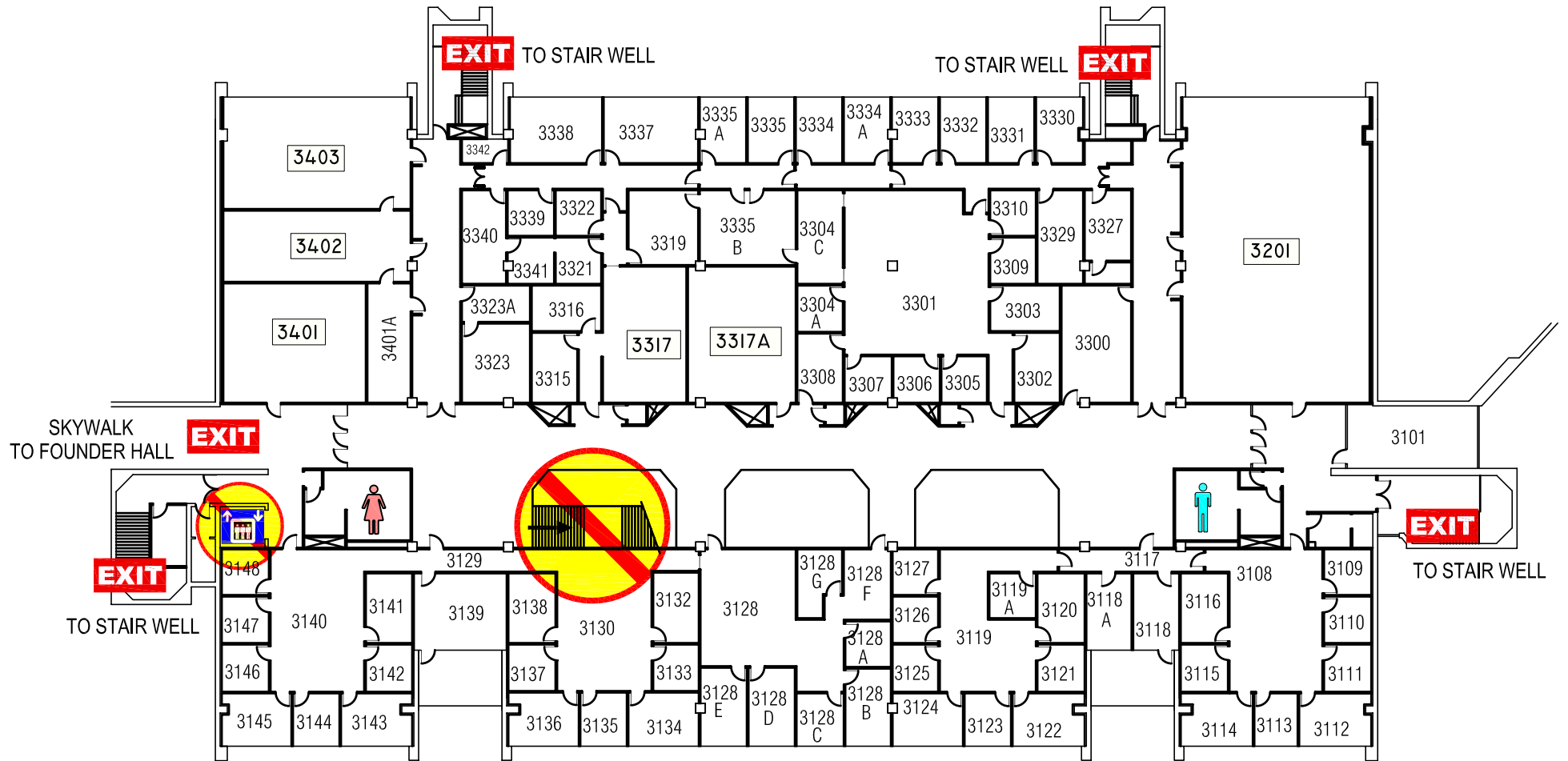
Alumni Hall 2nd FLOOR

EXIT IN CASE OF EMERGENCY USE MARKED EXITS **EXIT**

DO NOT USE OPEN STAIRS OR ELEVATORS

WHEELCHAIR USERS ARE TO GO INTO THE STAIR WELLS **EXIT** AND WAIT FOR EMERGENCY PERSONNEL.

EMERGENCY EXIT PLAN



Alumni Hall 3rd FLOOR

EXIT IN CASE OF EMERGENCY USE MARKED EXITS **EXIT**

 **DO NOT USE OPEN STAIRS OR ELEVATORS** 

 **WHEELCHAIR USERS ARE TO USE THE SKYWALK OR GO INTO THE STAIR WELLS **EXIT** AND WAIT FOR EMERGENCY PERSONNEL** 