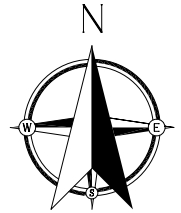
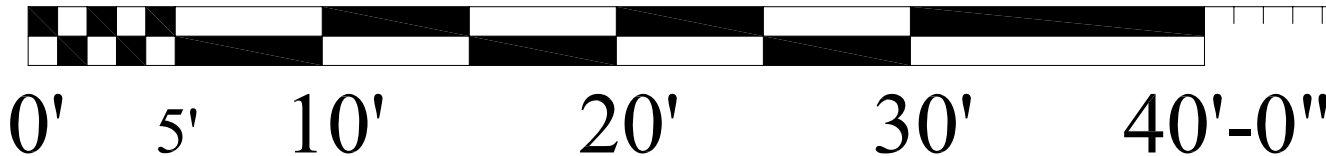
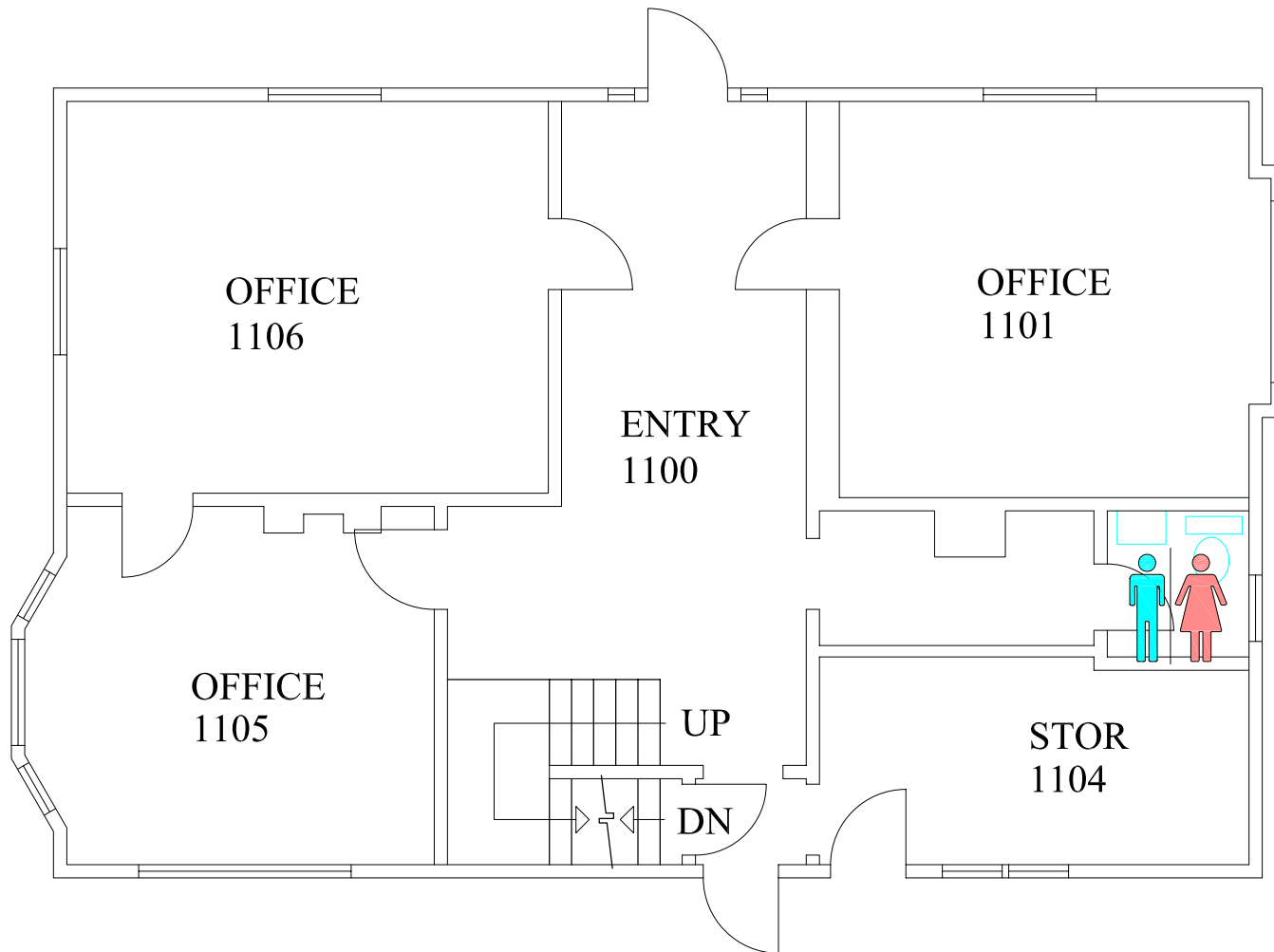


Lower Level



8289 Biomedical Sciences Offices

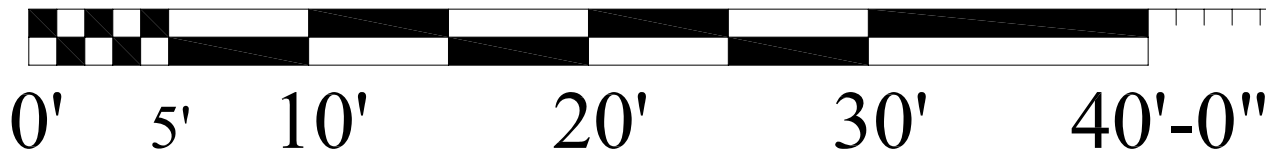


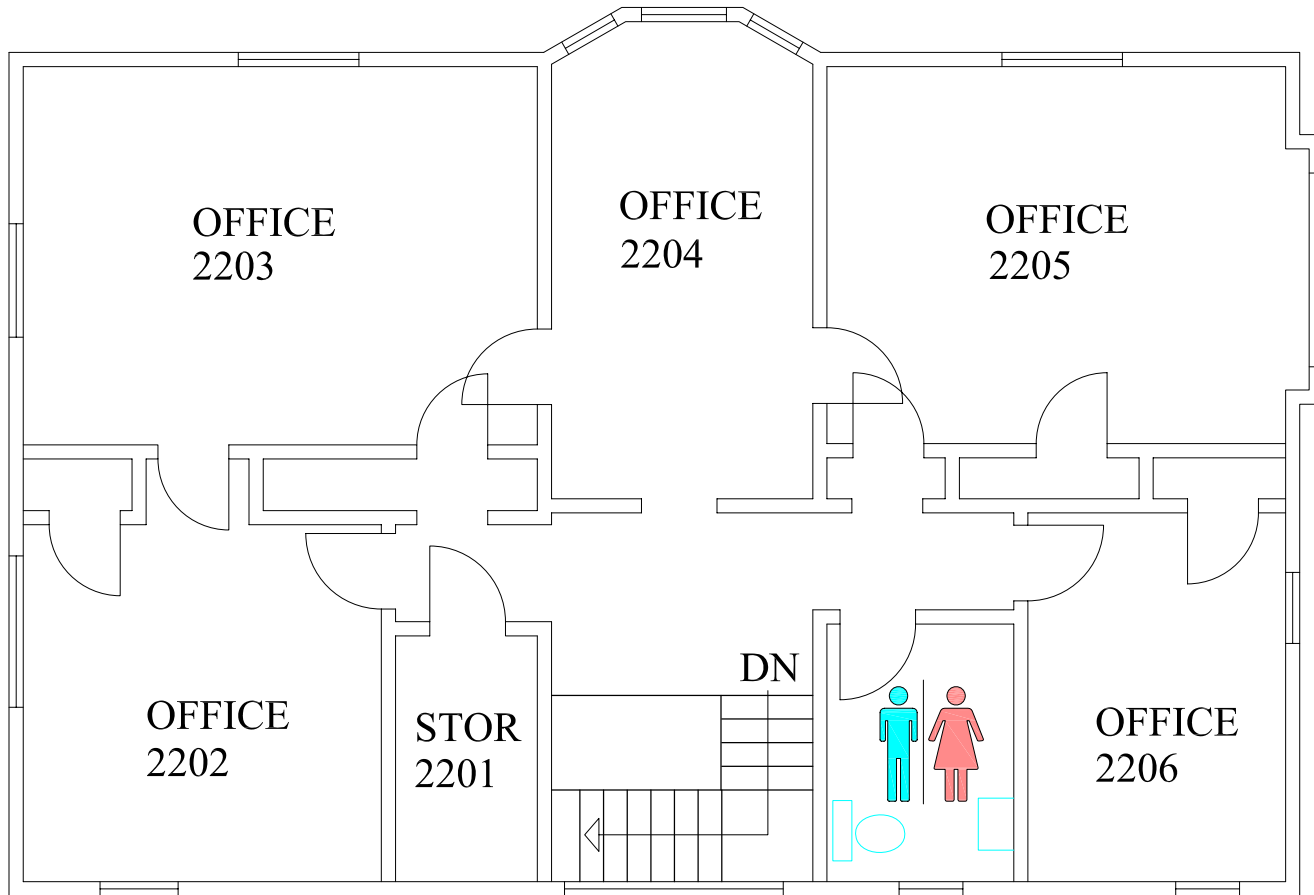


1st. Floor



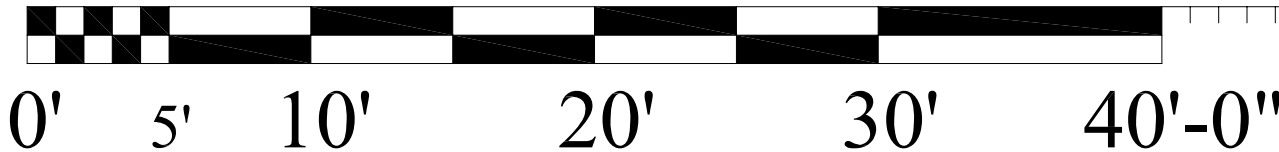
8289 Biomedical Sciences Offices





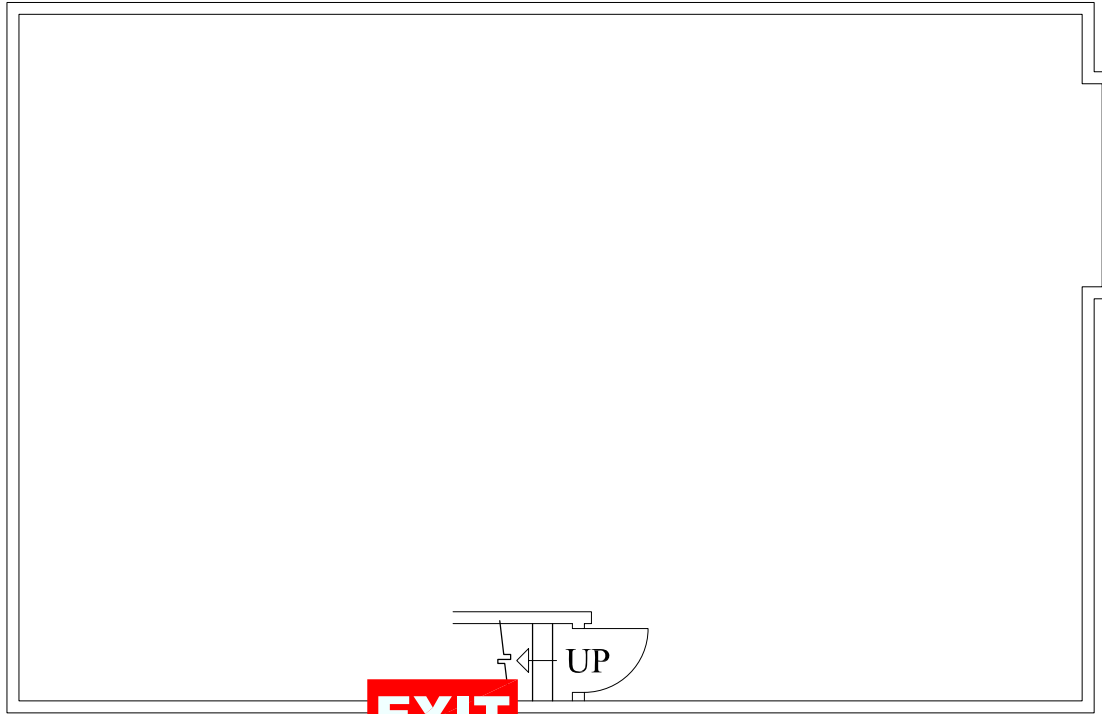
2nd. Floor

8289 Biomedical Sciences Offices



EMERGENCY EXIT PLAN

EXIT IN CASE OF EMERGENCY USE MARKED EXITS **EXIT**



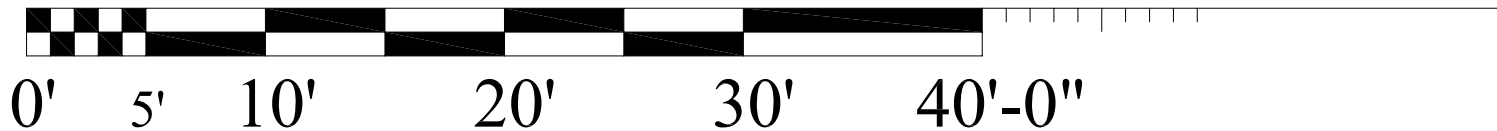
EXIT

TO 1st FLOOR

Lower Level

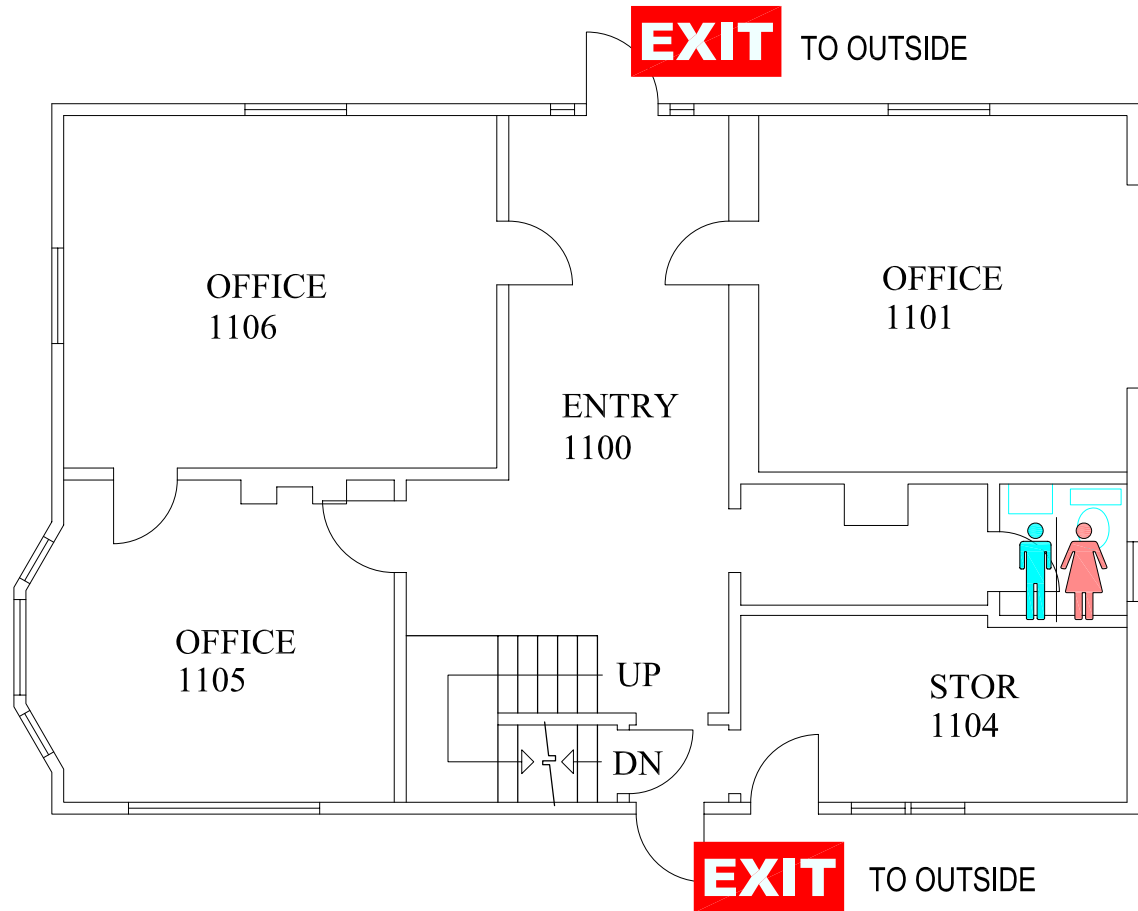


8289 Biomedical Sciences Offices



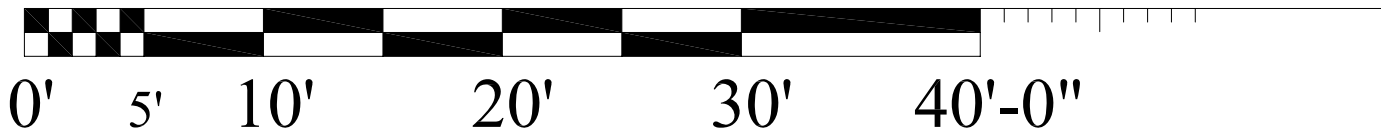
EMERGENCY EXIT PLAN

EXIT IN CASE OF EMERGENCY USE MARKED EXITS **EXIT**



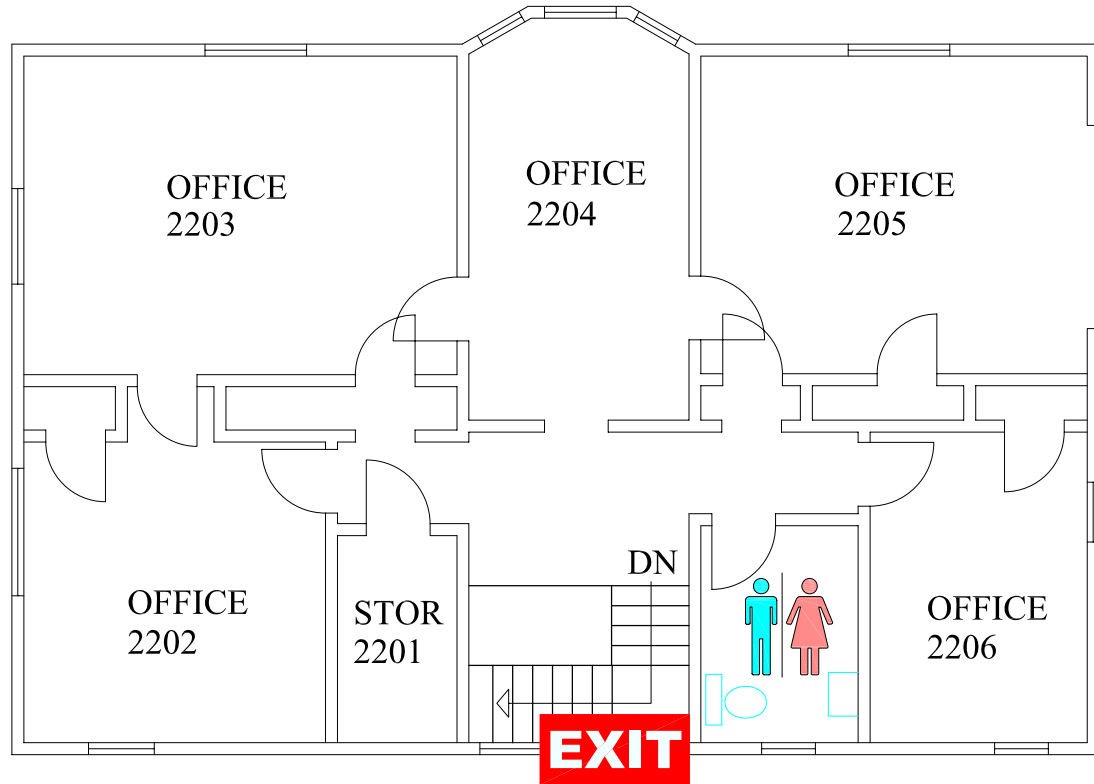
1st. Floor

8289 Biomedical Sciences Offices



EMERGENCY EXIT PLAN

EXIT IN CASE OF EMERGENCY USE MARKED EXITS **EXIT**

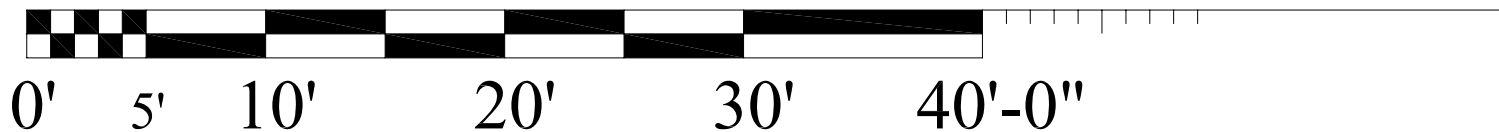


TO 1st FLOOR

2nd. Floor

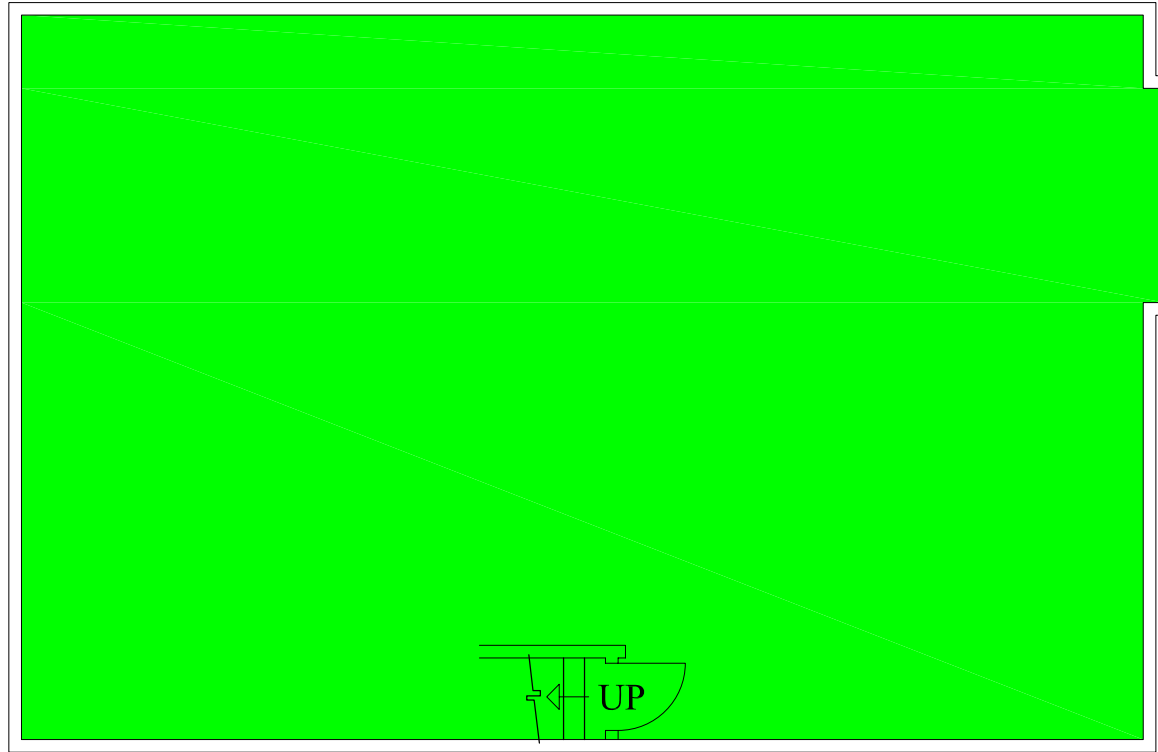


8289 Biomedical Sciences Offices



EMERGENCY STORM SHELTERS

In event of a Tornado Warning everyone should go to the Lower Level **Primary Storm Shelter**



Lower Level



8289 Biomedical Sciences Offices

