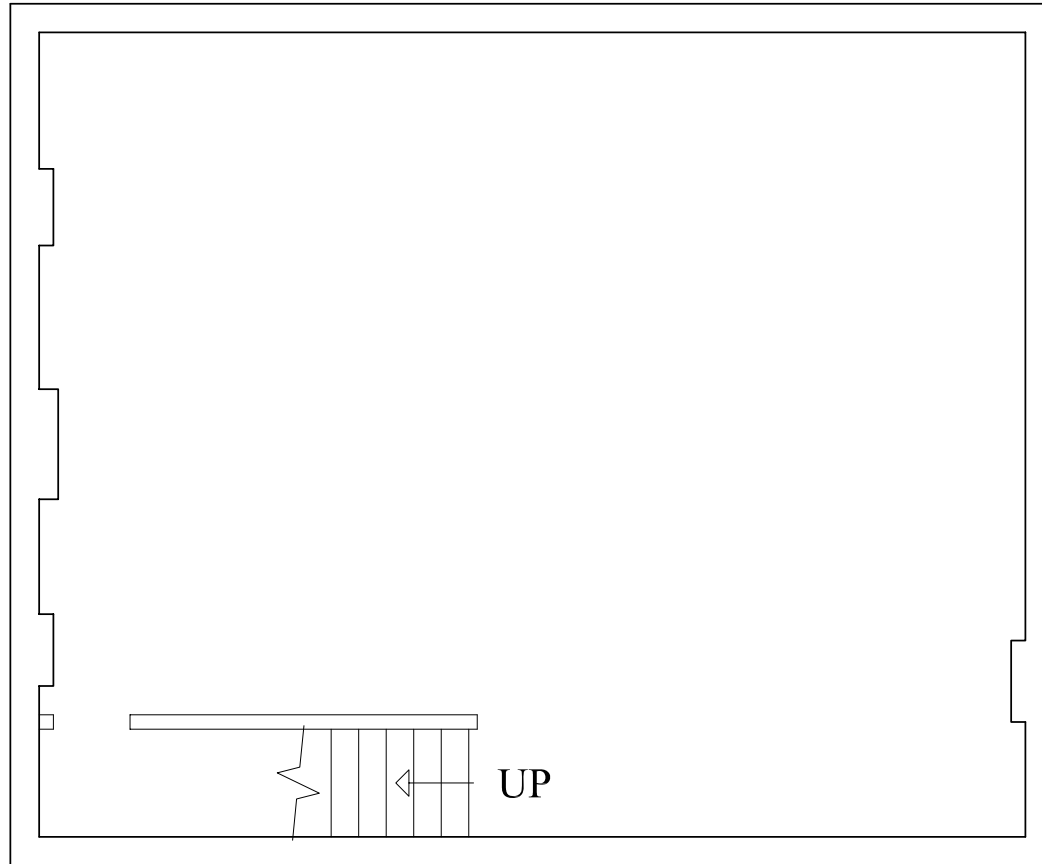
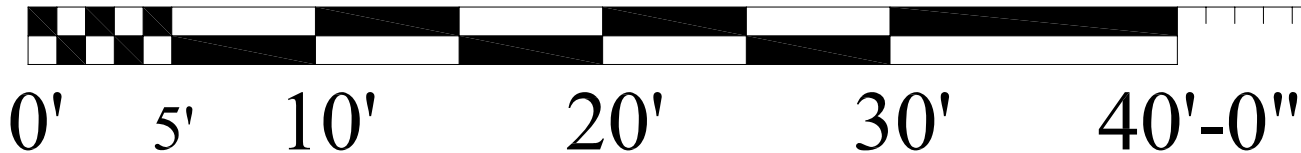
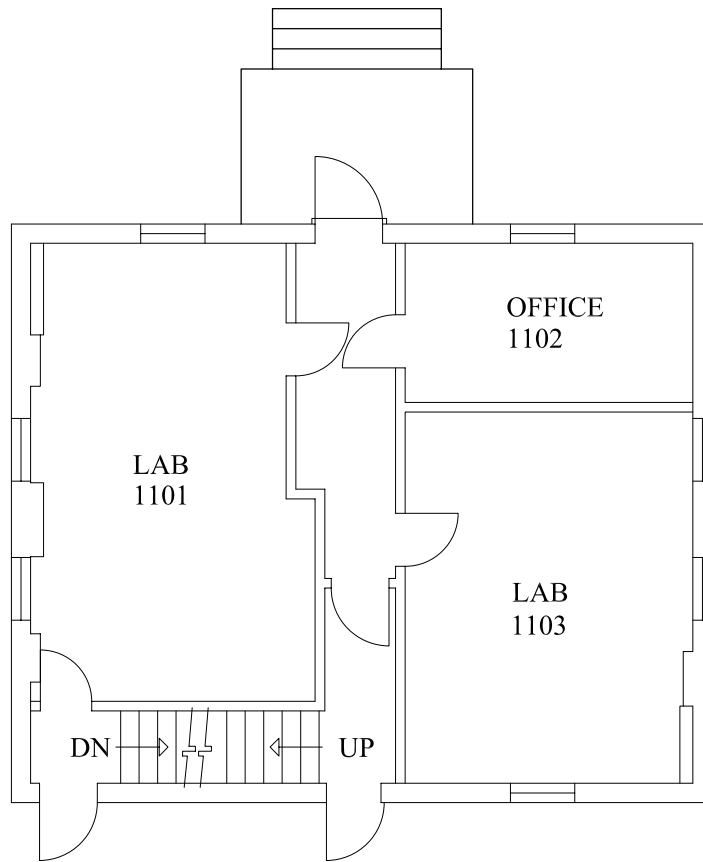


Lower Level



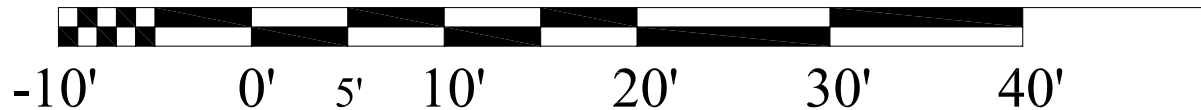
8287 Department of Restorative Dentistry
Section of Dental Materials

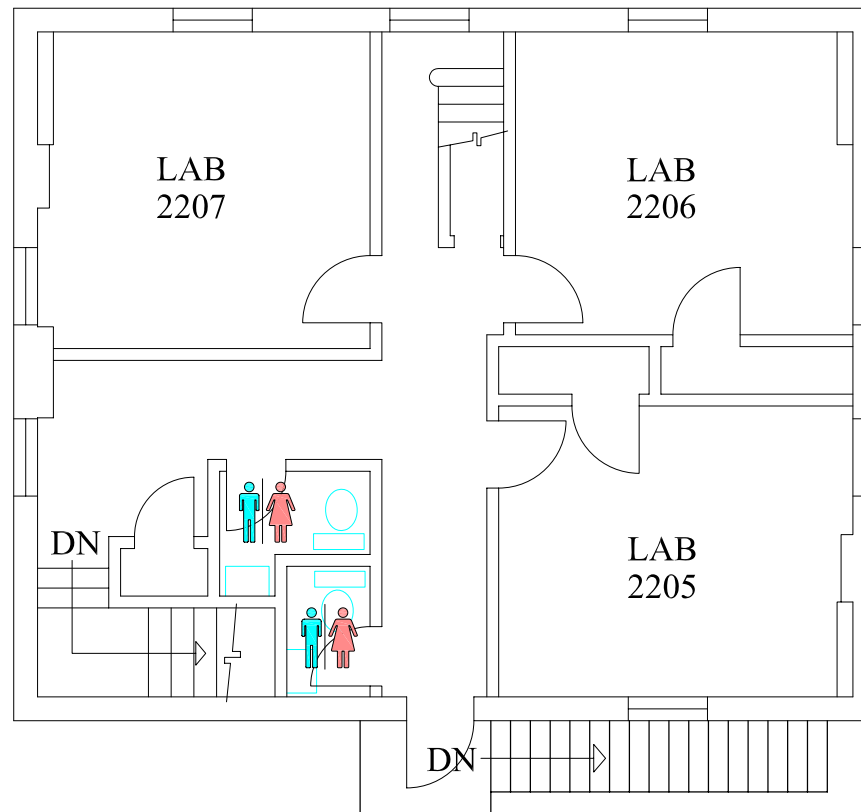




1st. Floor

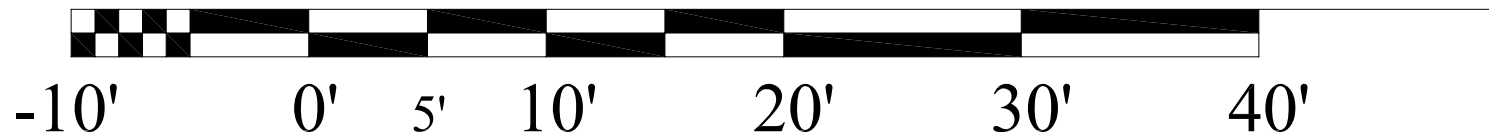
8287 Department of Restorative Dentistry
Section of Dental Materials





2nd. Floor

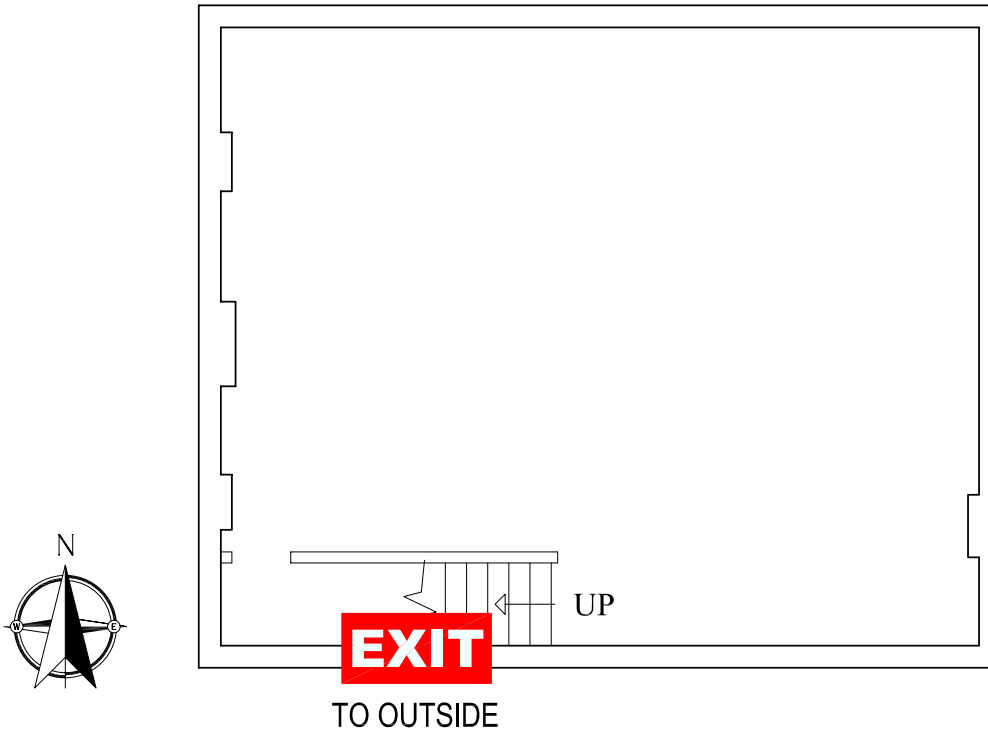
8287 Department of Restorative Dentistry
Section of Dental Materials



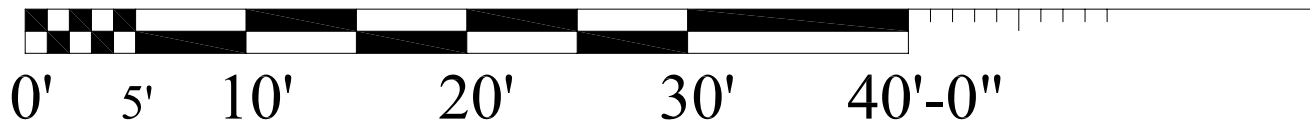
EMERGENCY EXIT PLAN

EXIT IN CASE OF EMERGENCY USE MARKED EXITS **EXIT**

Lower Level



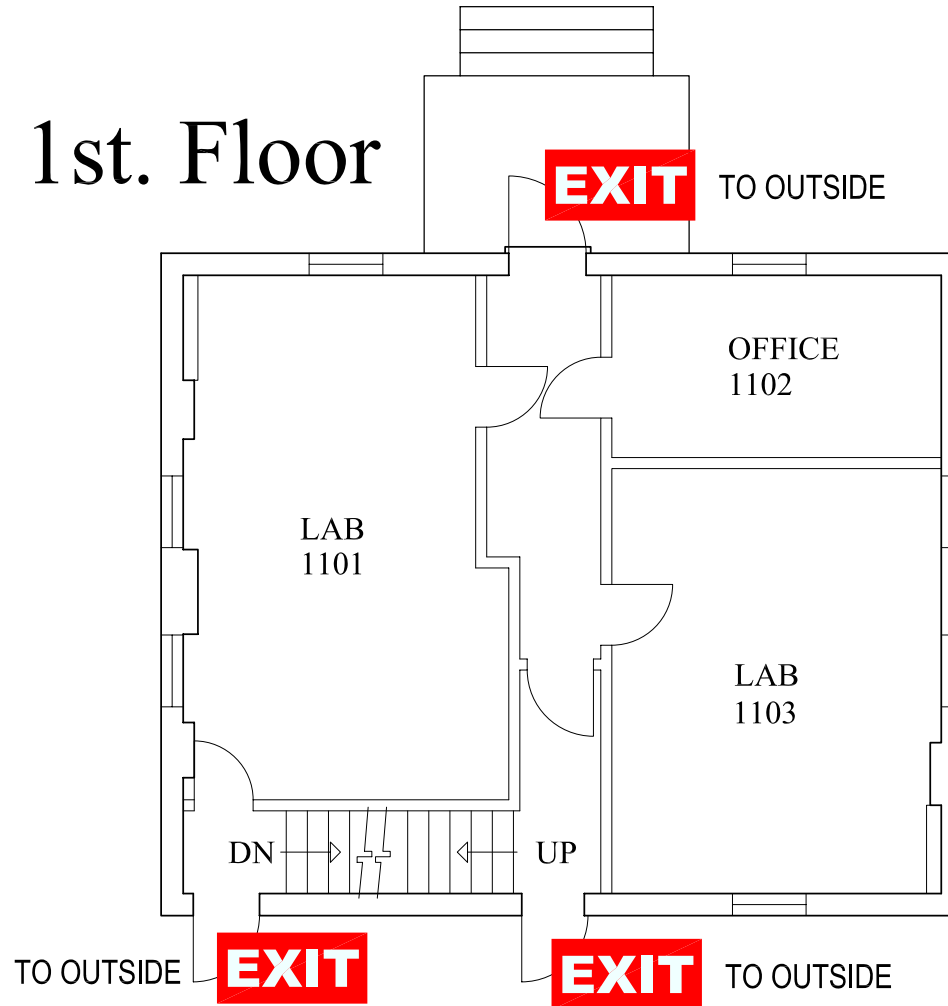
8287 Department of Restorative Dentistry
Section of Dental Materials



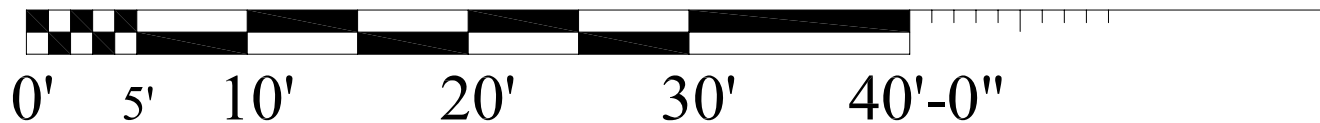
EMERGENCY EXIT PLAN

EXIT IN CASE OF EMERGENCY USE MARKED EXITS **EXIT**

1st. Floor



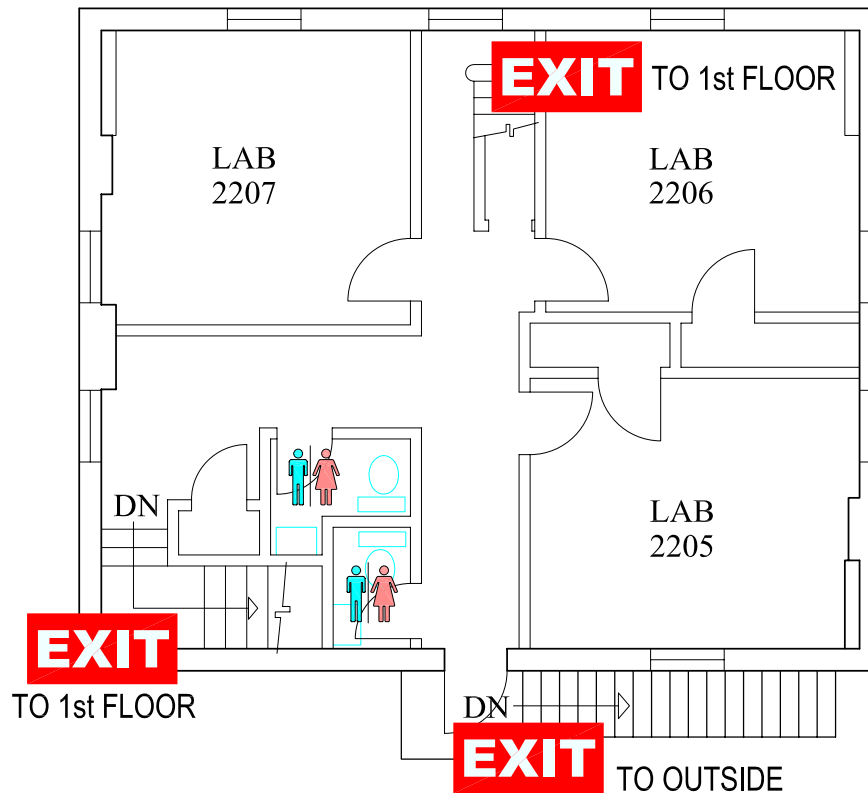
8287 Department of Restorative Dentistry
Section of Dental Materials



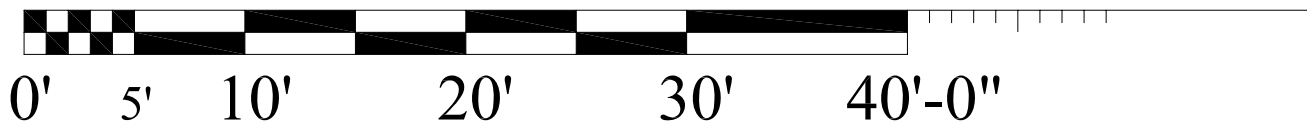
EMERGENCY EXIT PLAN

EXIT IN CASE OF EMERGENCY USE MARKED EXITS **EXIT**

2nd. Floor



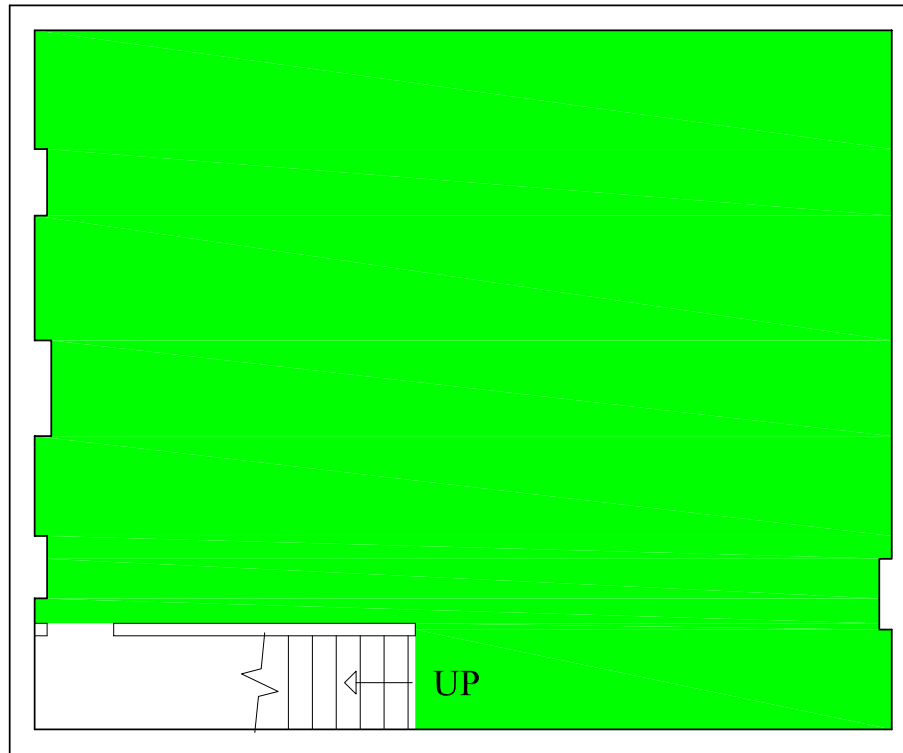
8287 Department of Restorative Dentistry
Section of Dental Materials



EMERGENCY STORM SHELTERS

In event of a Tornado Warning everyone should go to the Lower Level **Primary Storm Shelter**

Lower Level



8287 Department of Restorative Dentistry
Section of Dental Materials

