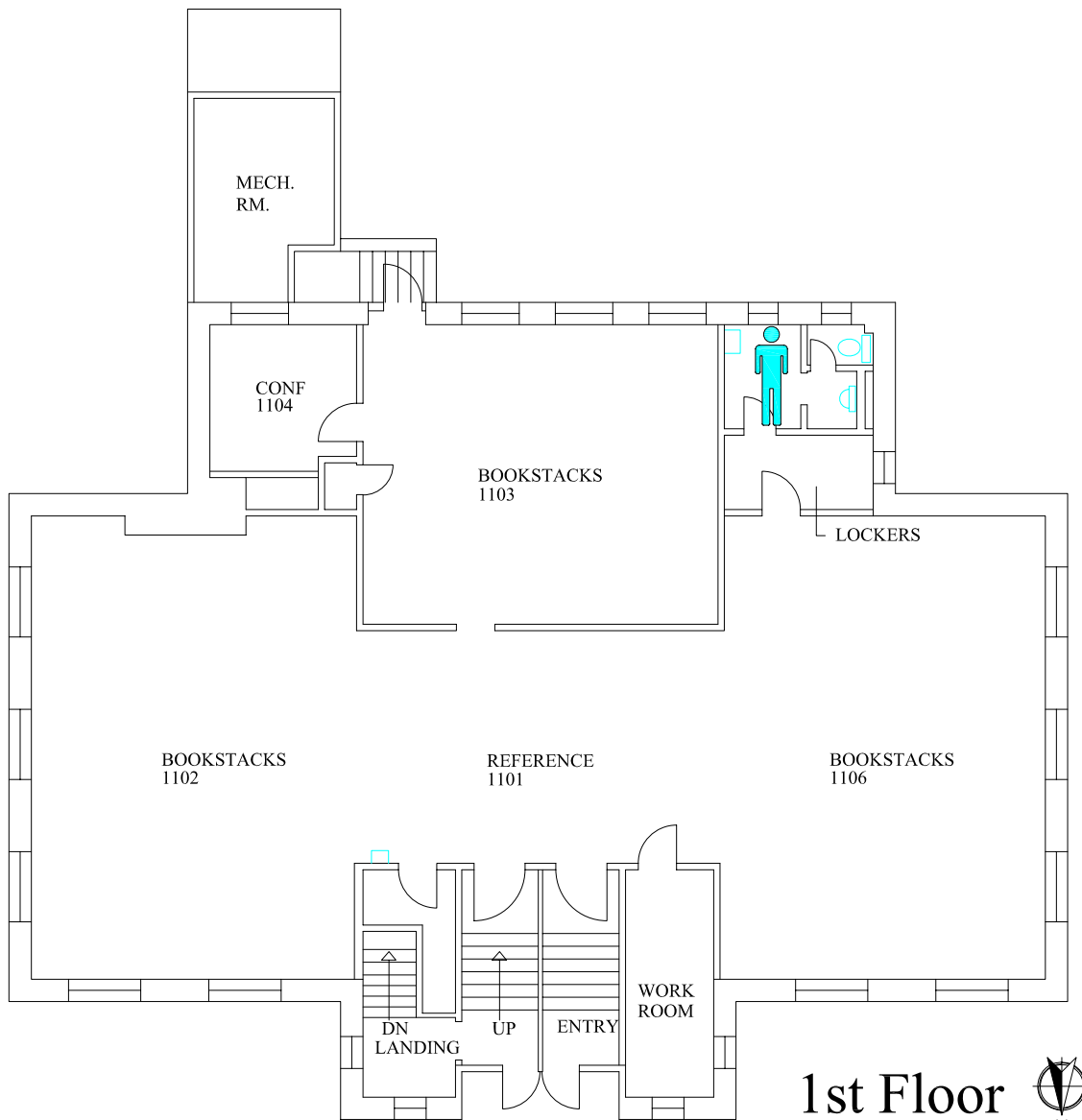


Building 8277

# Biomedical Library



-10'      0'      5'      10'      20'      30'      40'

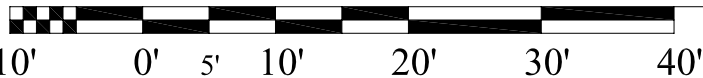


1st Floor



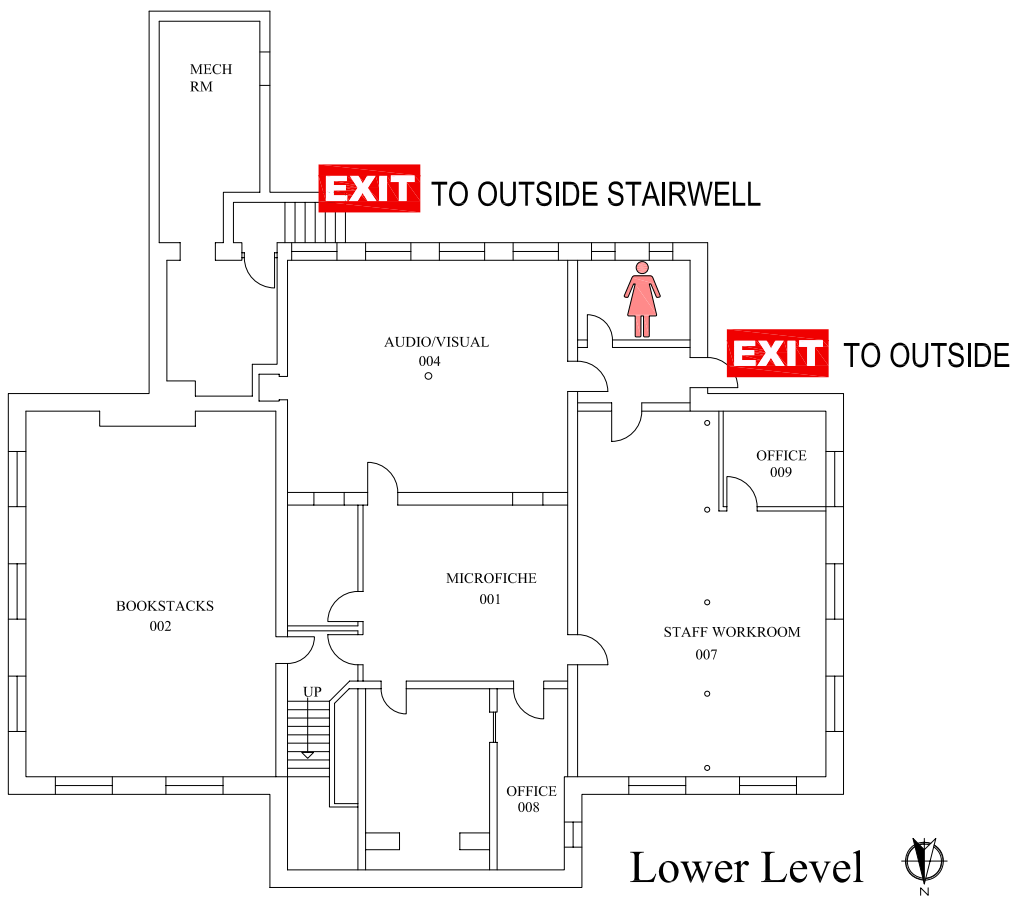
Building 8277

# Biomedical Library



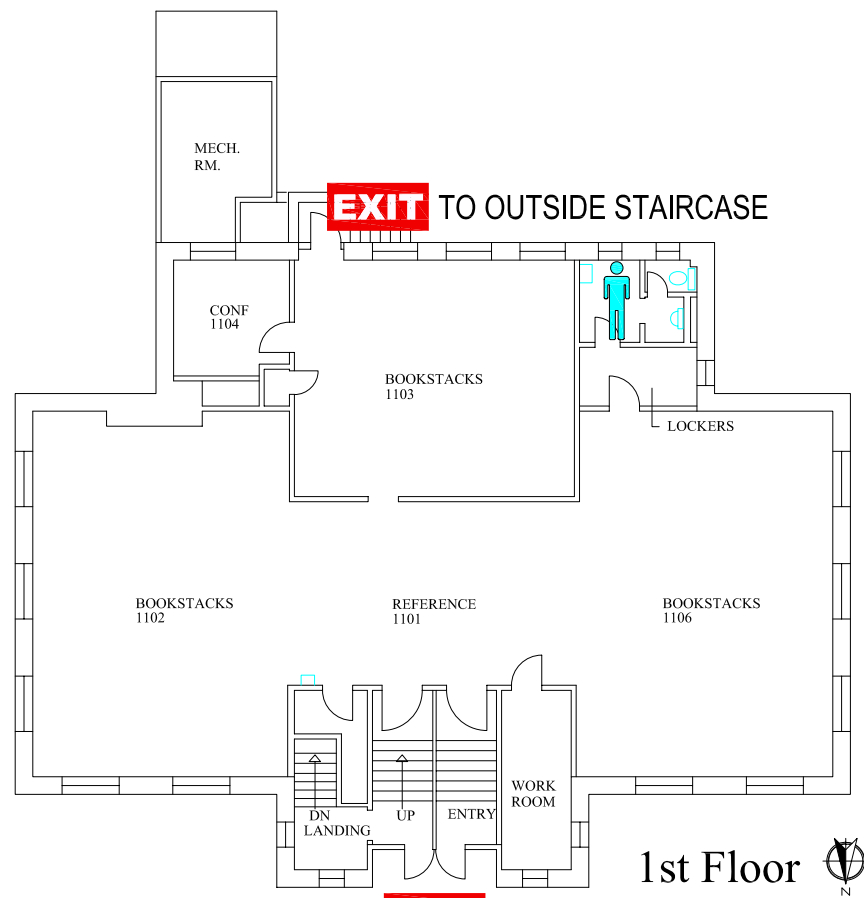
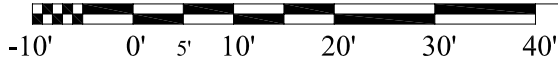
# EMERGENCY EXIT PLAN

**EXIT** IN CASE OF EMERGENCY USE MARKED EXITS **EXIT**



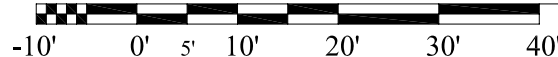
Building 8277

Biomedical Library



Building 8277

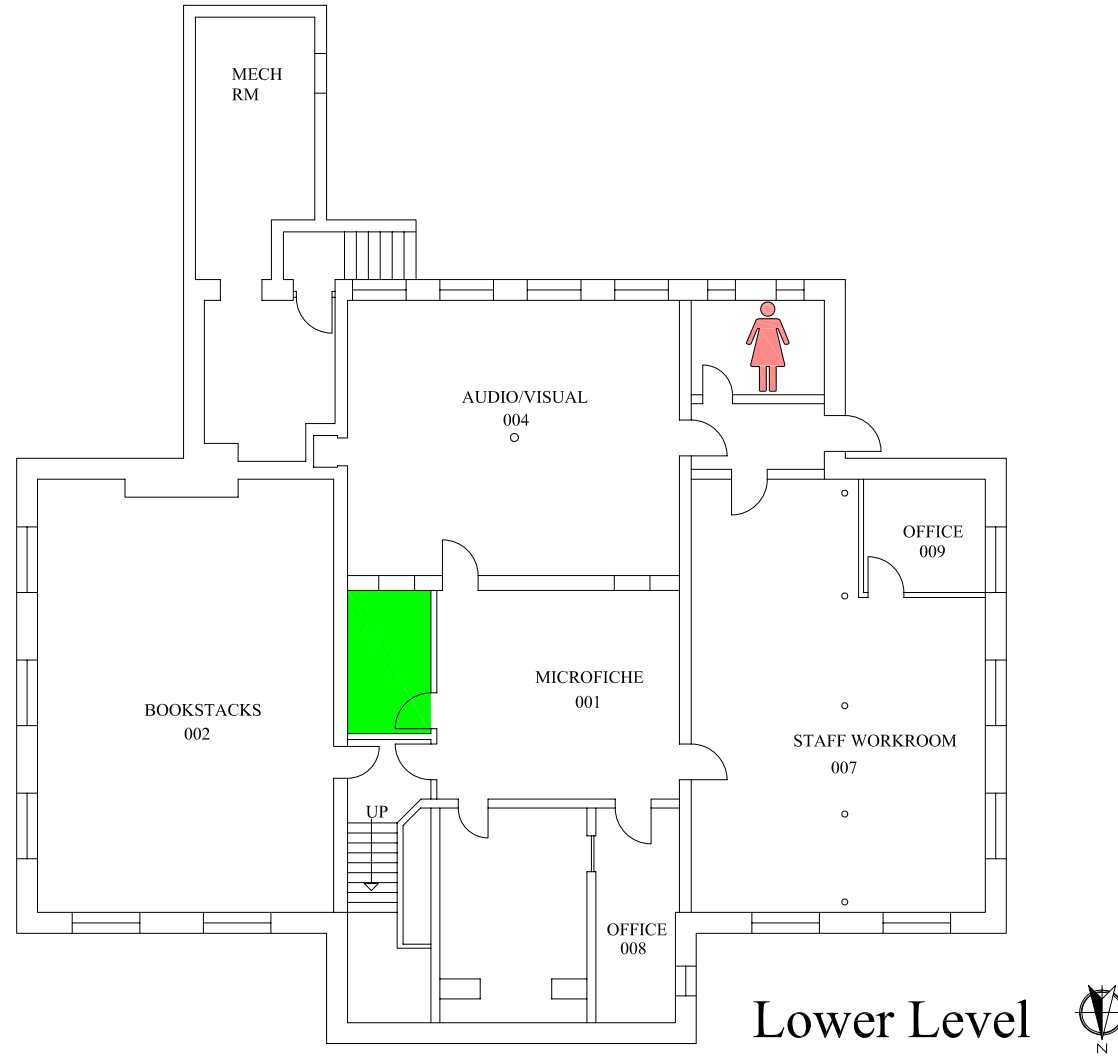
Biomedical Library



# EMERGENCY STORM SHELTERS

In event of a Tornado Warning everyone should go to the Lower Level

**PRIMARY SHELTER**



Building 8277

## Biomedical Library

