

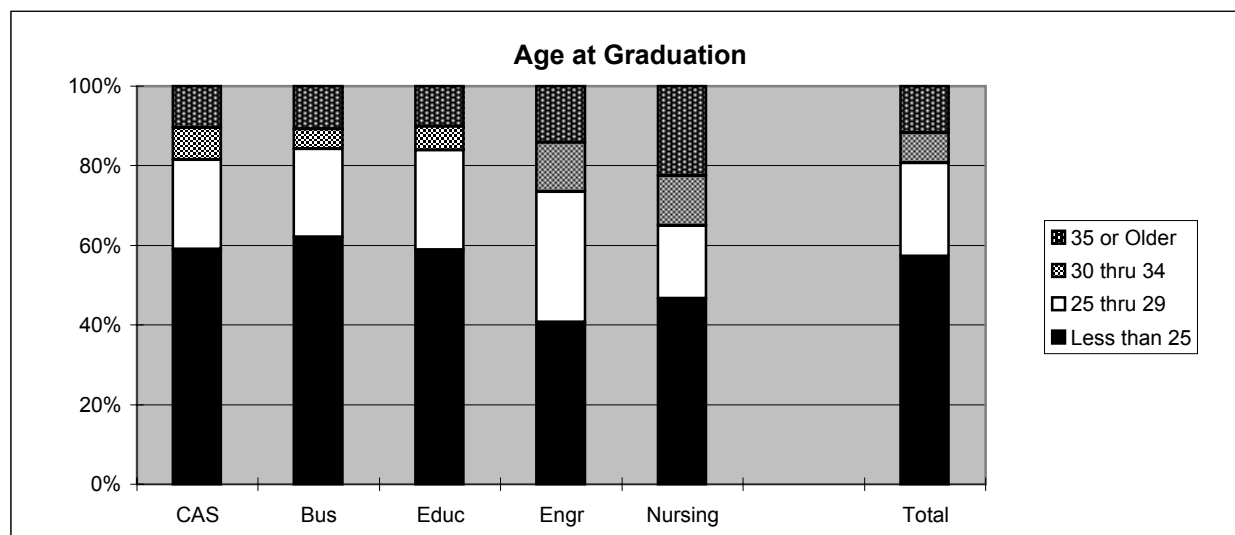
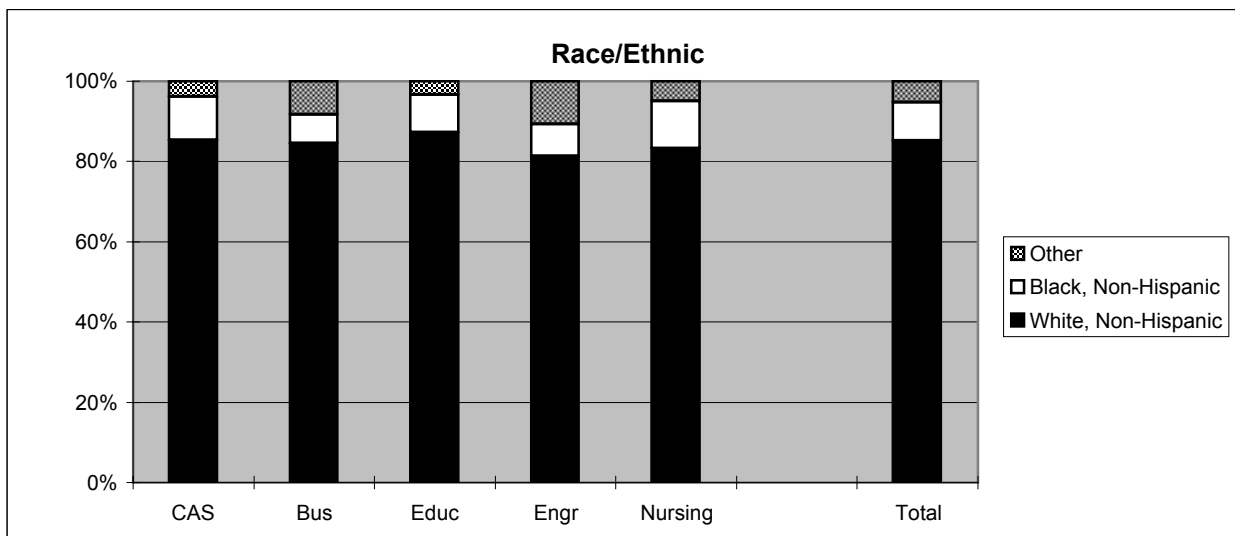
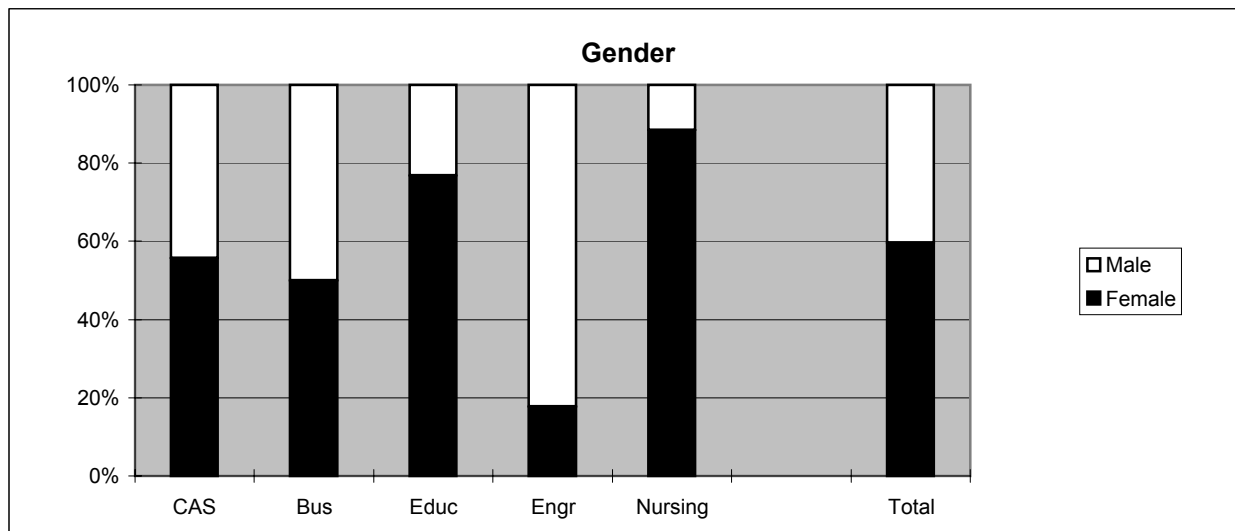
Southern Illinois University Edwardsville
Survey of 1999 Baccalaureate Graduates -- One Year Out

Survey Population and Respondents

	Number of Graduates
1999 Baccalaureate Degrees	1,432
Less persons who received 2 baccalaureate degrees	4
1999 Baccalaureate Graduates	1,428
Less Graduates with No Address Available *	15
Graduates Surveyed	1,413
Less Non-Deliverable Surveys	25
Less Non-Responding Graduates	921
Survey Respondents	467
Gross Response Rate (Respondents/Total Surveyed)	33.05%
Adjusted Response Rate (Respondents/Delivered Surveys)	33.65%

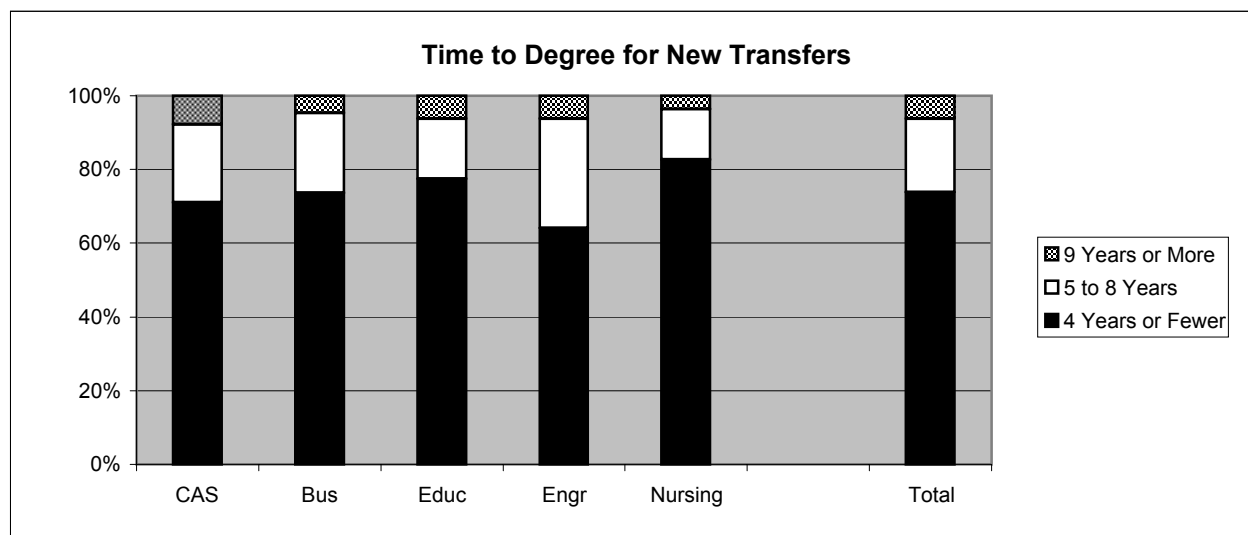
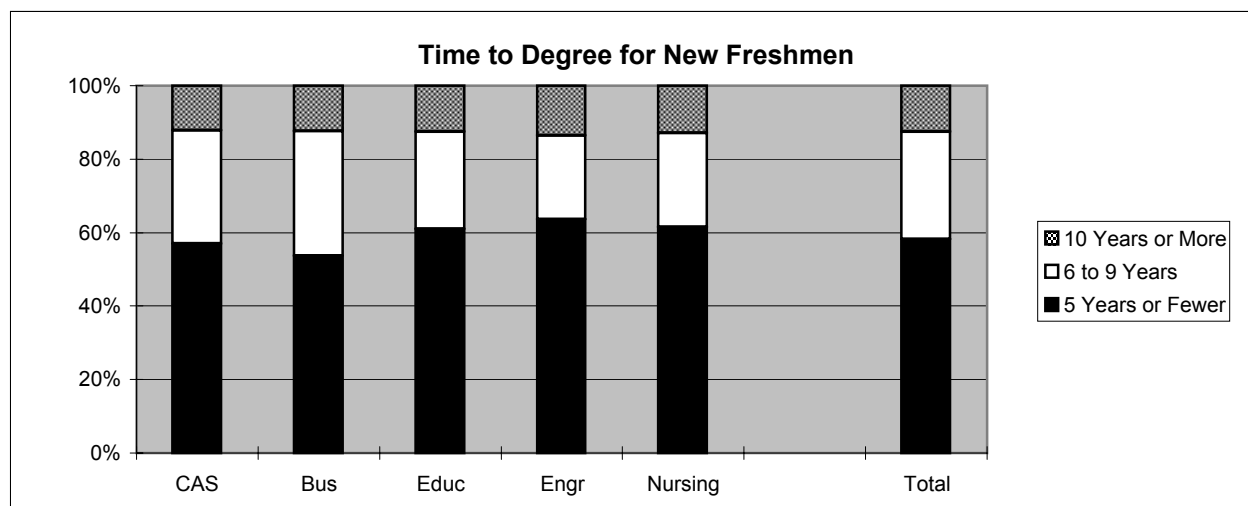
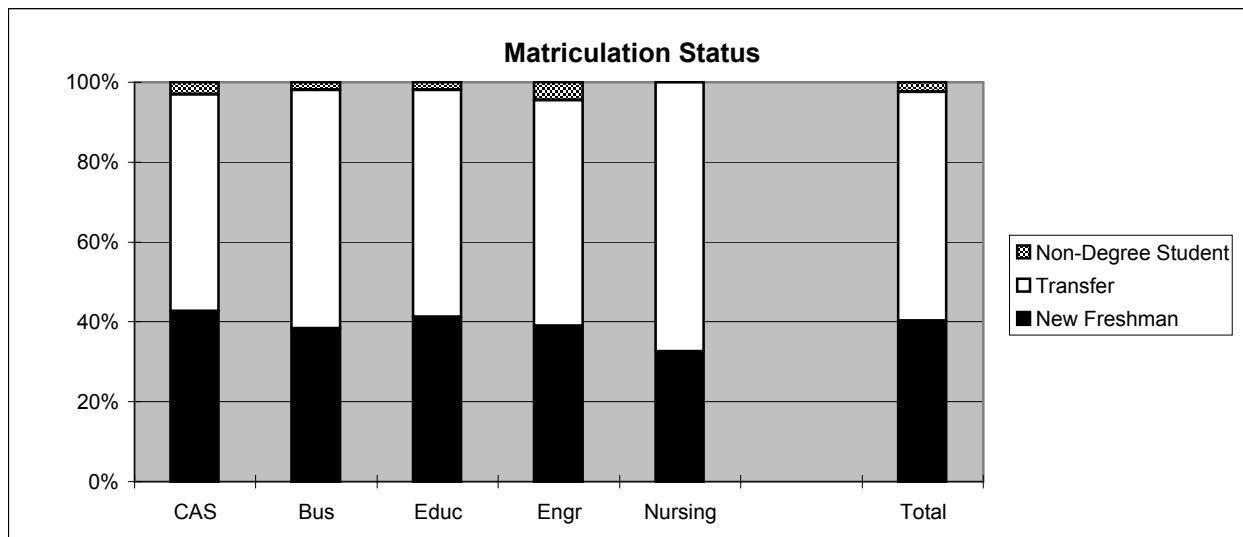
* Includes deceased alumni, foreign addresses and known bad addresses.

1999 Baccalaureate Recipients Profile



1999 Baccalaureate Recipients

Profile, con't.



Southern Illinois University Edwardsville
Survey of 1999 Baccalaureate Graduates -- One Year Out

Comparison of All Graduates to Survey Respondents

School Detail	All Graduates					
	CAS	Bus	Educ	Engr	Nursing	Total
Total	539	316	367	113	120	1455
Female	55.7%	50.0%	76.8%	17.7%	88.3%	59.5%
Male	44.3%	50.0%	23.2%	82.3%	11.7%	40.5%
Missing Data	0.0%	0.0%	0.0%	0.0%	0.0%	0.0%
White, Non-Hispanic	85.3%	84.5%	87.2%	81.4%	83.3%	85.2%
Black, Non-Hispanic	10.8%	7.3%	9.5%	8.0%	11.7%	9.6%
Asian/Pacific Islander	2.4%	2.8%	0.5%	4.4%	1.7%	2.1%
American Indian/Alaskan Native	0.4%	0.3%	0.5%	0.0%	0.8%	0.4%
Hispanic	0.6%	2.2%	1.9%	2.7%	2.5%	1.6%
Non-Resident Alien	0.6%	2.8%	0.3%	3.5%	0.0%	1.2%
Missing Data	0.0%	0.0%	0.0%	0.0%	0.0%	0.0%
Age at Graduation	range	range	range	range	range	range
	median	median	median	median	median	median
	21 to 56	21 to 52	21 to 57	21 to 44	21 to 55	20 to 57
	23.16	23.16	23.4	24.8	24.7	23.4
Bachelor of Science	64.2%	87.7%	94.8%	94.7%	100.0%	82.3%
Bachelor of Music	3.0%	0.0%	0.0%	0.0%	0.0%	1.1%
Bachelor of Arts	23.4%	0.0%	5.2%	5.3%	0.0%	10.4%
Bachelor of Fine Arts	2.8%	0.0%	0.0%	0.0%	0.0%	1.0%
Bachelor of Sci in Accountancy	0.0%	12.3%	0.0%	0.0%	0.0%	2.7%
Bachelor of Liberal Studies	6.7%	0.0%	0.0%	0.0%	0.0%	2.5%
Missing Data	0.0%	0.0%	0.0%	0.0%	0.0%	0.0%
Graduated Spring 1999	44.9%	43.7%	52.6%	51.3%	60.8%	48.4%
Graduated Summer 1999	22.6%	19.6%	11.4%	24.8%	2.5%	17.7%
Graduated Fall 1999	32.5%	36.7%	36.0%	23.9%	36.7%	34.0%
Missing Data	0.0%	0.0%	0.0%	0.0%	0.0%	0.0%
Matriculated as a New Freshman	42.7%	38.3%	41.1%	38.9%	32.5%	40.2%
Matriculated as a Transfer	54.4%	59.8%	56.9%	56.6%	67.5%	57.5%
Matriculated as a Non-Degree Student	3.0%	1.9%	1.9%	4.4%	0.0%	2.3%
Missing Data	0.0%	0.0%	0.0%	0.0%	0.0%	0.0%
Time to Degree for New Freshmen						
3 Years or Fewer	0.4%	0.0%	0.7%	0.0%	0.0%	0.3%
4 Years	17.8%	19.8%	13.2%	20.5%	35.9%	18.5%
5 Years	38.7%	33.9%	47.0%	43.2%	25.6%	39.3%
6 Years	18.3%	13.2%	12.6%	13.6%	17.9%	15.4%
7 Years	7.4%	6.6%	9.9%	4.5%	5.1%	7.5%
8 Years	3.5%	9.1%	2.6%	2.3%	2.6%	4.3%
9 Years	1.7%	5.0%	1.3%	2.3%	0.0%	2.2%
10 Years	0.9%	0.0%	1.3%	6.8%	0.0%	1.2%
11 Years or More	11.3%	12.4%	11.3%	6.8%	12.8%	11.3%
Missing Data	0.0%	0.0%	0.0%	0.0%	0.0%	0.0%
Time to Degree for Transfers						
2 or Fewer Years	16.4%	19.0%	15.8%	9.4%	27.2%	17.3%
3 Years	29.7%	29.1%	38.8%	26.6%	35.8%	32.2%
4 Years	24.9%	25.4%	23.0%	28.1%	19.8%	24.3%
5 Years	10.6%	12.2%	7.7%	10.9%	9.9%	10.2%
6 Years	5.8%	3.2%	3.8%	6.3%	3.7%	4.5%
7 Years	2.7%	2.6%	3.8%	6.3%	0.0%	3.0%
8 Years	2.0%	3.7%	1.0%	6.3%	0.0%	2.3%
9 Years	2.0%	1.1%	2.4%	3.1%	1.2%	1.9%
10 Years or More	5.8%	3.7%	3.8%	3.1%	2.5%	4.3%
Missing Data	0.0%	0.0%	0.0%	0.0%	0.0%	0.0%
Graduating GPA (4 point scale)	Mean	Mean	Mean	Mean	Mean	Mean
	3.046	2.885	3.297	2.998	3.243	3.087
	Std Dev	Std Dev	Std Dev	Std Dev	Std Dev	Std Dev
	0.484	0.441	0.415	0.138	0.466	0.479

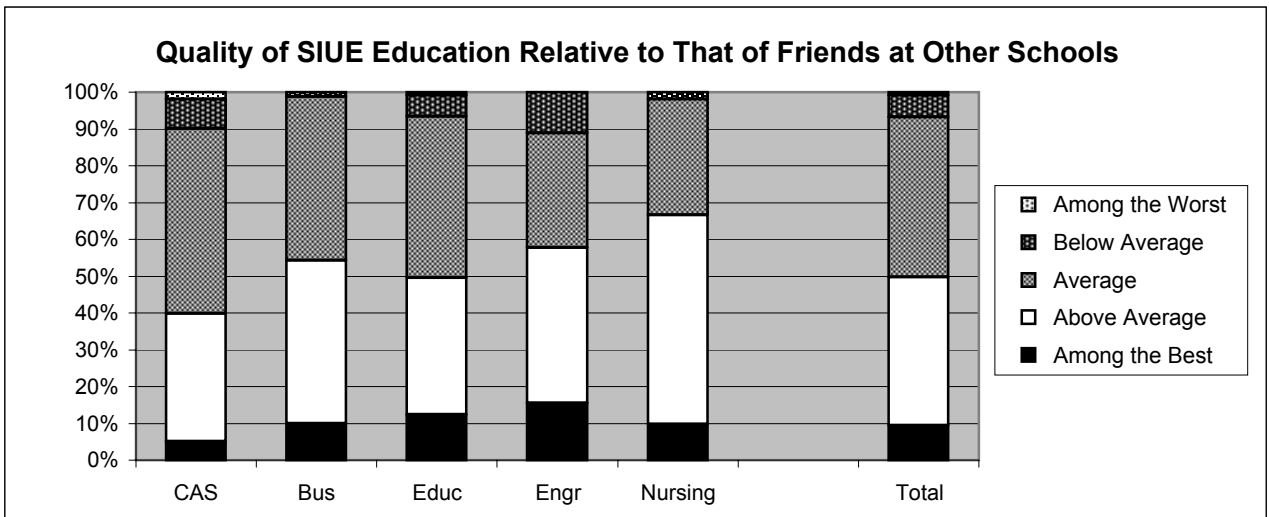
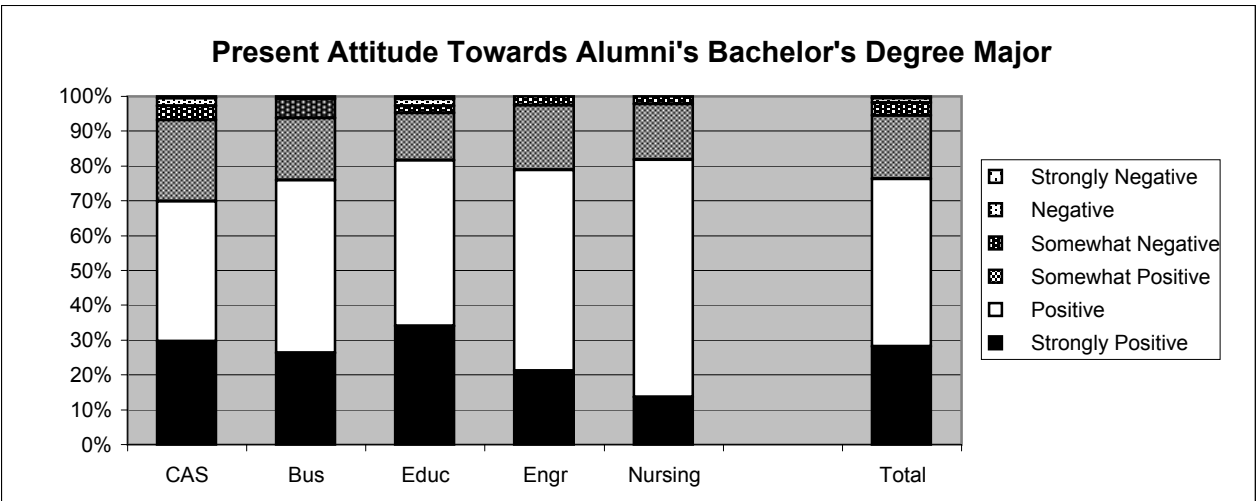
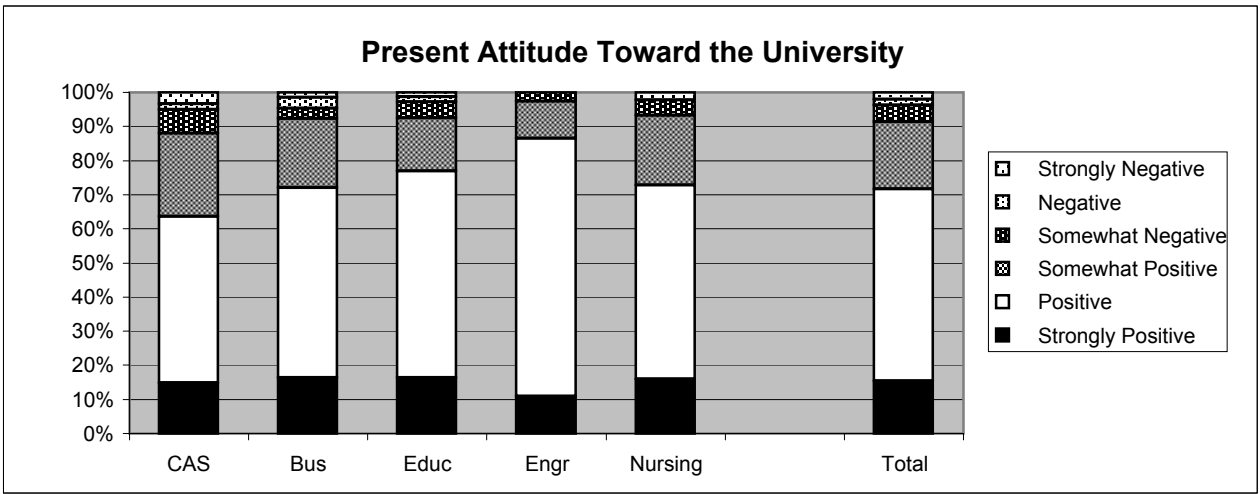
Southern Illinois University Edwardsville
Survey of 1999 Baccalaureate Graduates -- One Year Out

Comparison of All Graduates to Survey Respondents, con't.

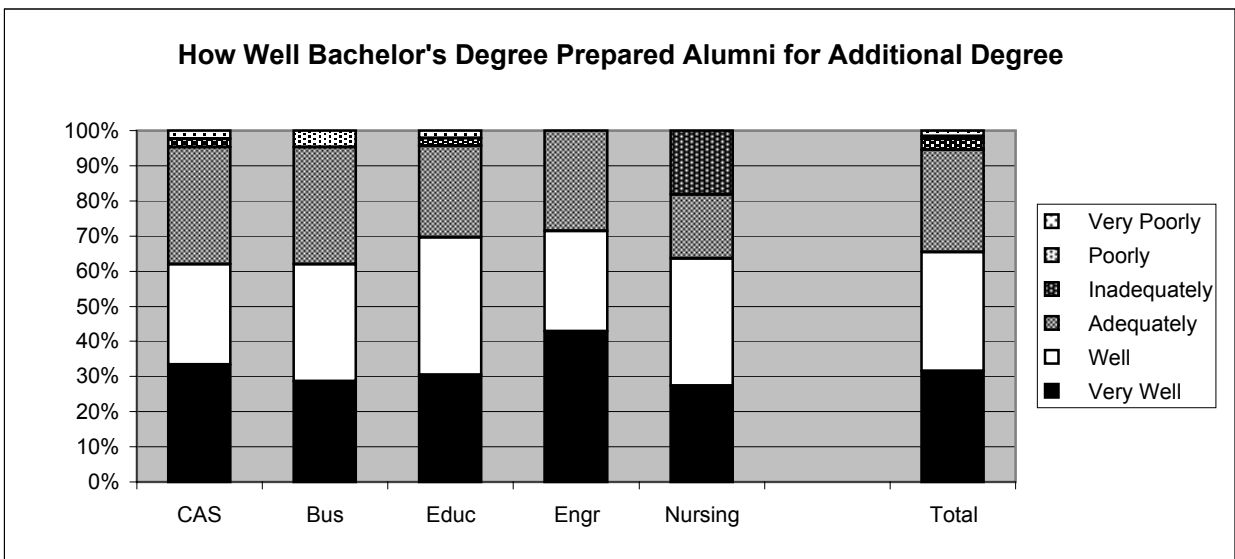
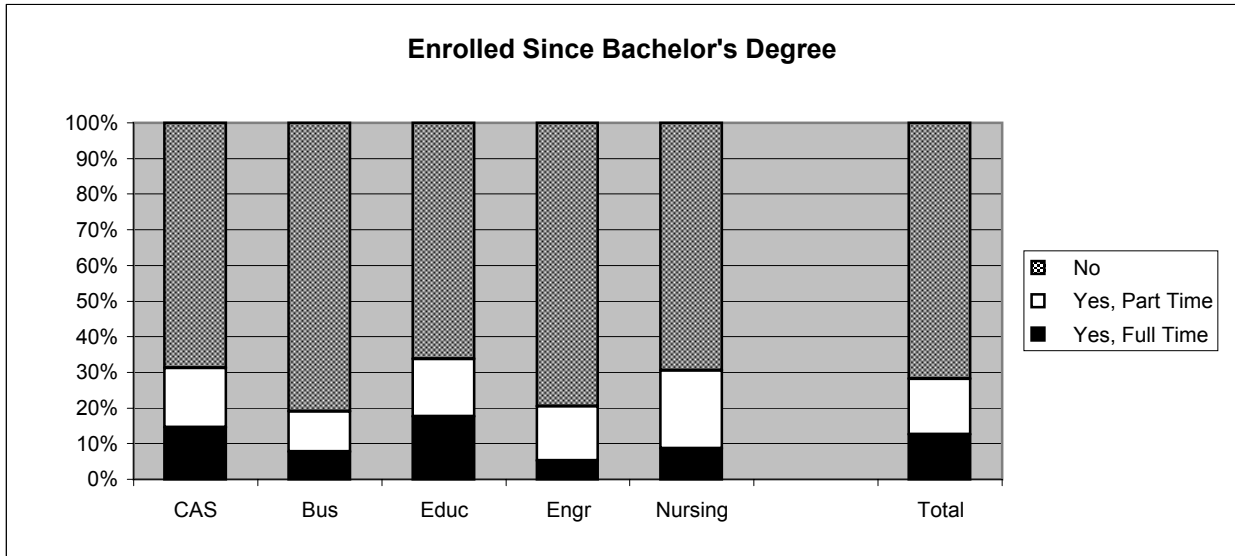
School Detail	All One Year Out Survey Respondents					
	CAS	Bus	Educ	Engr	Nursing	Total
Total	180	132	155	40	46	553
Female	63.3%	56.8%	83.9%	15.0%	89.1%	66.2%
Male	36.7%	43.2%	16.1%	85.0%	10.9%	33.8%
Missing Data	0.6%	0.0%	0.0%	0.0%	0.0%	0.2%
White, Non-Hispanic	88.3%	90.2%	88.4%	90.0%	87.0%	88.8%
Black, Non-Hispanic	6.1%	2.3%	7.1%	2.5%	6.5%	5.2%
Asian/Pacific Islander	3.3%	2.3%	1.3%	5.0%	0.0%	2.4%
American Indian/Alaskan Native	1.1%	0.8%	0.6%	0.0%	2.2%	0.9%
Hispanic	0.6%	2.3%	2.6%	2.5%	4.3%	2.0%
Non-Resident Alien	0.6%	2.3%	0.0%	0.0%	0.0%	0.7%
Missing Data	0.6%	0.0%	0.0%	0.0%	0.0%	0.2%
Age at Graduation						
range	21 to 53	20 to 52	21 to 57	22 to 44	22 to 55	20 to 57
median	24.4	23.1	23.1	23.8	25	23.3
Bachelor of Science	70.0%	87.1%	93.5%	97.5%	100.0%	85.2%
Bachelor of Music	2.2%	0.0%	0.0%	0.0%	0.0%	0.7%
Bachelor of Arts	20.0%	0.0%	6.5%	2.5%	0.0%	8.5%
Bachelor of Fine Arts	1.7%	0.0%	0.0%	0.0%	0.0%	0.5%
Bachelor of Sci in Accountancy	0.0%	12.9%	0.0%	0.0%	0.0%	3.1%
Bachelor of Liberal Studies	6.1%	0.0%	0.0%	0.0%	0.0%	2.0%
Missing Data	0.6%	0.0%	0.0%	0.0%	0.0%	0.2%
Graduated Spring 1999	48.3%	41.7%	54.8%	45.0%	69.6%	50.1%
Graduated Summer 1999	22.2%	20.5%	11.0%	20.0%	2.2%	16.8%
Graduated Fall 1999	29.4%	37.9%	34.2%	35.0%	28.3%	33.1%
Missing Data	0.6%	0.0%	0.0%	0.0%	0.0%	0.2%
Matriculated as a New Freshman	38.3%	34.8%	45.2%	42.5%	34.8%	39.4%
Matriculated as a Transfer	57.8%	62.1%	52.3%	55.0%	65.2%	57.7%
Matriculated as a Non-Degree Student	3.9%	3.0%	2.6%	2.5%	0.0%	2.9%
Missing Data	0.0%	0.0%	0.0%	2.5%	0.0%	0.2%
Time to Degree for New Freshmen						
3 Years or Fewer	0.0%	0.0%	1.4%	0.0%	0.0%	0.5%
4 Years	21.7%	17.4%	18.6%	23.5%	43.8%	21.6%
5 Years	36.2%	26.1%	50.0%	64.7%	6.3%	38.5%
6 Years	14.5%	17.4%	10.0%	11.8%	25.0%	14.2%
7 Years	7.2%	8.7%	5.7%	0.0%	6.3%	6.4%
8 Years	1.4%	8.7%	0.0%	0.0%	0.0%	2.3%
9 Years	4.3%	4.3%	0.0%	0.0%	0.0%	2.3%
10 Years	0.0%	0.0%	1.4%	0.0%	0.0%	0.5%
11 Years or More	14.5%	17.4%	12.9%	0.0%	18.8%	13.8%
Missing Data	0.0%	0.0%	0.0%	0.0%	0.0%	0.0%
Time to Degree for Transfers						
2 or Fewer Years	15.4%	17.1%	14.8%	9.1%	26.7%	16.3%
3 Years	31.7%	30.5%	35.8%	36.4%	30.0%	32.6%
4 Years	26.0%	24.4%	25.9%	31.8%	23.3%	25.7%
5 Years	9.6%	14.6%	9.9%	9.1%	13.3%	11.3%
6 Years	5.8%	4.9%	1.2%	0.0%	0.0%	3.4%
7 Years	2.9%	1.2%	2.5%	4.5%	0.0%	2.2%
8 Years	1.0%	2.4%	2.5%	4.5%	0.0%	1.9%
9 Years	1.9%	1.2%	2.5%	0.0%	3.3%	1.9%
10 Years or More	5.8%	3.7%	4.9%	4.5%	3.3%	4.7%
Missing Data	0.0%	0.0%	0.0%	0.0%	0.0%	0.0%
Graduating GPA (4 point scale)						
Mean	3.107	2.910	3.399	3.004	3.313	3.152
Std Dev	0.483	0.440	0.390	0.455	0.504	0.485

1999 Baccalaureate Graduates One Year Out

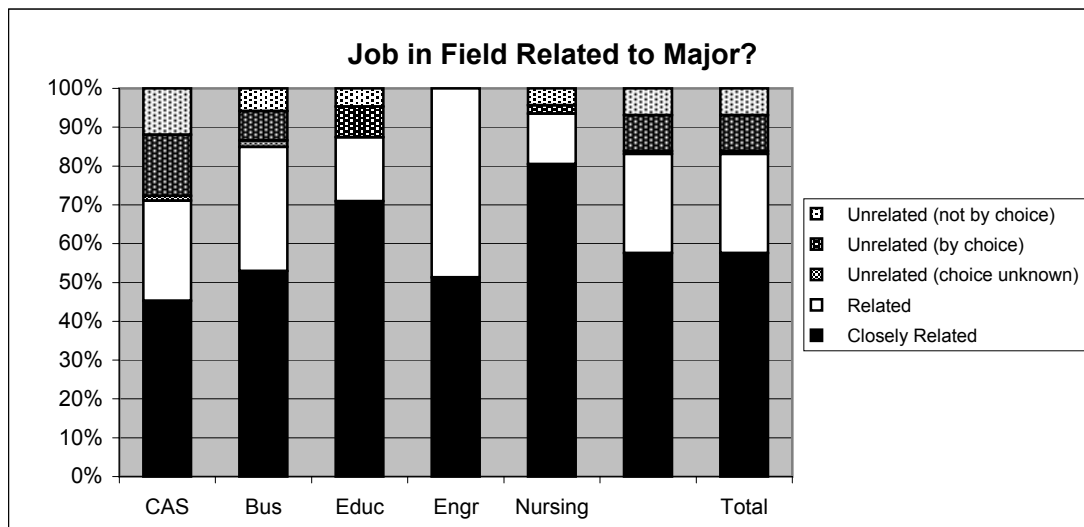
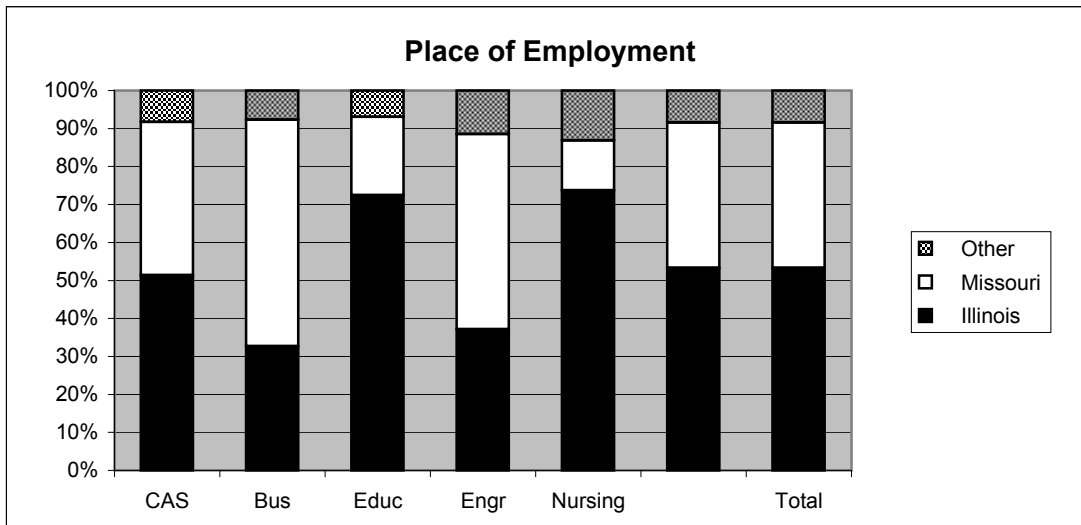
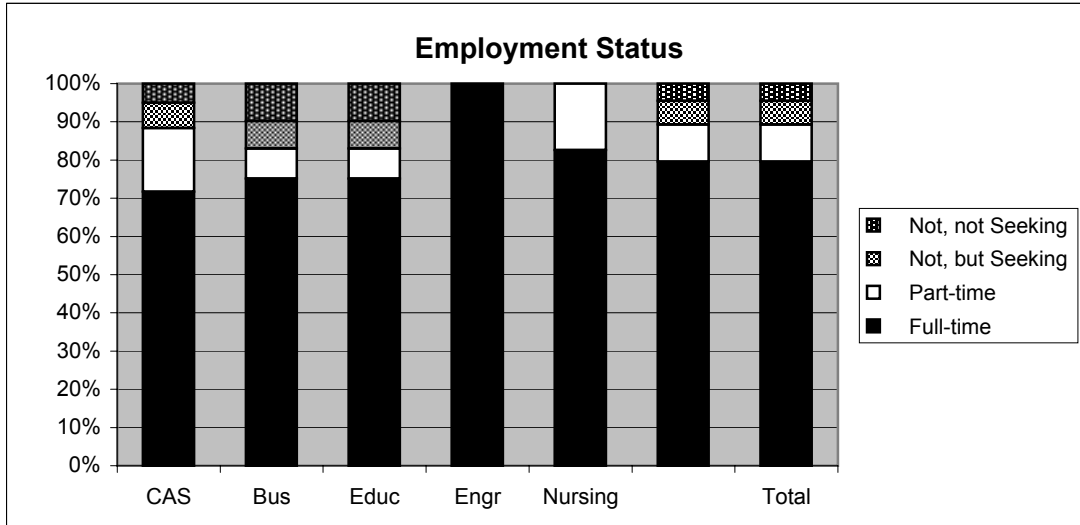
Satisfaction



1999 Baccalaureate Graduates One Year Out Additional Education

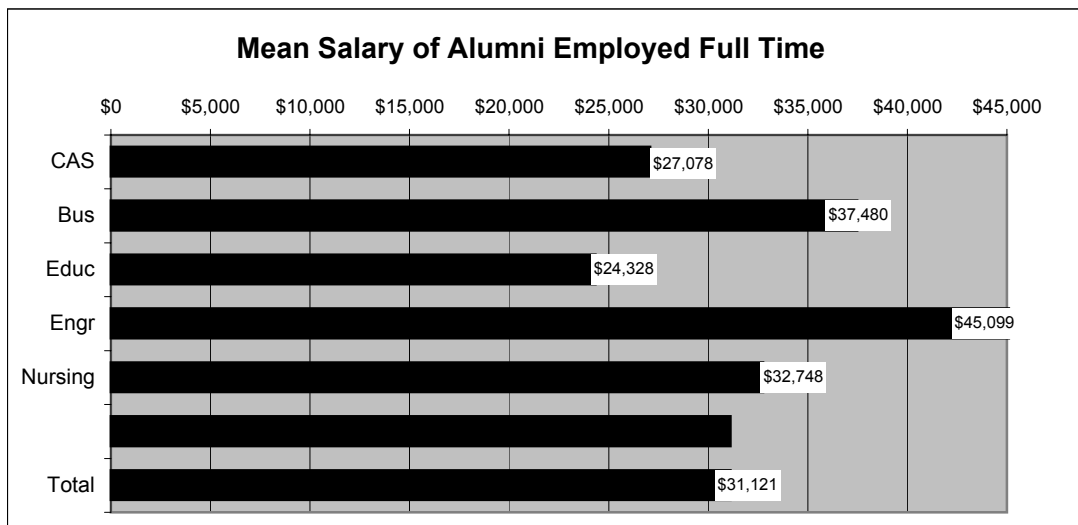
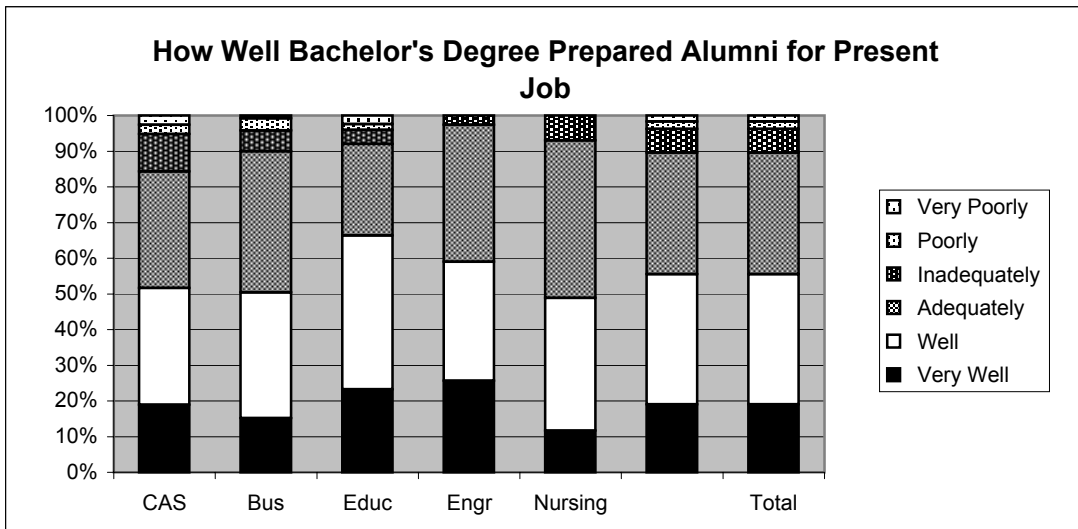
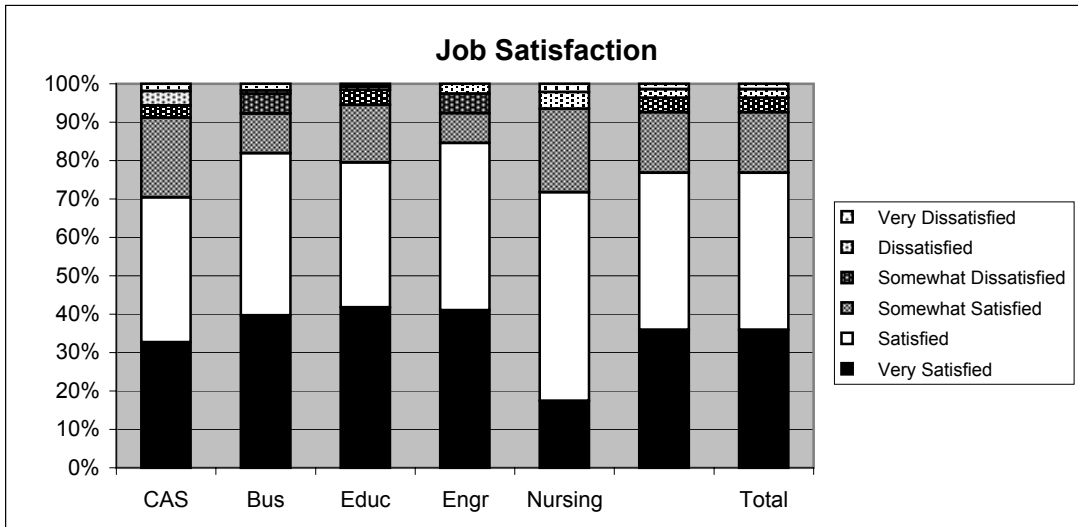


1999 Baccalaureate Graduates One Year Out *Employment*



1999 Baccalaureate Graduates One Year Out

Employment, con't.



Southern Illinois University Edwardsville
Survey of 1999 Baccalaureate Graduates -- One Year Ou
Survey Responses -- Part I
Employment Questions

School Detail	CAS	Bus	Educ	Engr	Nursing	Total
Number of Survey Respondents *	180	132	155	40	46	553
1. Number Employed:						
Full-time	71.3%	75.2%	75.2%	100.0%	82.6%	79.5%
Part-time	16.6%	7.8%	7.8%	0.0%	17.4%	9.6%
Not, but Seeking	6.6%	7.2%	7.2%	0.0%	0.0%	6.2%
Not, not Seeking	5.0%	9.8%	9.8%	0.0%	0.0%	4.5%
Number Responding	181	131	153	39	46	550
The remaining questions in Part I were to be answered only by respondents who were employed full-time or part-time.						
	159	119	127	39	46	490
2. Place of Employment						
Illinois	51.4%	32.7%	72.4%	37.1%	73.7%	53.3%
Missouri	40.4%	59.6%	20.7%	51.4%	13.2%	38.3%
Other	8.2%	7.7%	6.9%	11.4%	13.2%	8.4%
Number Responding	146	104	116	35	38	439
3. Classification of Primary Employer						
Self-Employed or Private Practice	3.2%	1.7%	0.0%	0.0%	2.2%	1.6%
Business (Industrial, Commercial or Service)	38.5%	72.0%	14.3%	46.2%	4.3%	37.7%
Professional Firm (e.g., Engineering, Law)	6.4%	16.1%	0.0%	35.9%	0.0%	8.9%
College or University	10.9%	3.4%	4.0%	0.0%	0.0%	5.4%
Elementary/Secondary School	14.1%	0.8%	61.1%	0.0%	0.0%	20.6%
Health Agency (e.g. Hospital, Clinic)	7.7%	0.8%	2.4%	0.0%	87.0%	11.5%
Federal, State, or Local Government	7.1%	1.7%	4.8%	12.8%	0.0%	4.9%
Armed Services	2.6%	0.0%	0.0%	5.1%	4.3%	1.6%
NonProfit (Non-Government)	7.1%	0.8%	7.9%	0.0%	2.2%	4.7%
Other	2.6%	2.5%	5.6%	0.0%	0.0%	2.9%
Number Responding	156	118	126	39	46	485
4. Job Satisfaction						
Very Satisfied	32.7%	39.7%	41.7%	41.0%	17.4%	35.9%
Satisfied	37.7%	42.2%	37.8%	43.6%	54.3%	40.9%
Somewhat Satisfied	20.8%	10.3%	15.0%	7.7%	21.7%	15.8%
Somewhat Dissatisfied	3.1%	5.2%	3.9%	5.1%	0.0%	3.7%
Dissatisfied	3.8%	0.9%	0.8%	2.6%	4.3%	2.3%
Very Dissatisfied	1.9%	1.7%	0.8%	0.0%	2.2%	1.4%
Number Responding	159	116	127	39	46	487
5. Job in Field?						
Closely Related	45.3%	52.9%	70.9%	51.3%	80.4%	57.6%
Related	25.8%	31.9%	16.5%	48.7%	13.0%	25.5%
Unrelated (choice unknown)	1.3%	1.7%	0.0%	0.0%	0.0%	0.8%
Unrelated (by choice)	15.7%	7.6%	7.9%	0.0%	2.2%	9.2%
Unrelated (not by choice)	11.9%	5.9%	4.7%	0.0%	4.3%	6.9%
Number Responding	159	119	127	39	46	490
6. Timing of Securing First Job After Degree						
Held the Same Job While Enrolled	18.9%	23.5%	7.9%	10.3%	37.0%	18.2%
Secured Job by Graduation	23.9%	29.4%	16.5%	48.7%	32.6%	26.1%
Secured Job After Graduation(timing unknown)	0.0%	0.8%	0.0%	2.6%	0.0%	0.4%
Less than 1 Month After Graduation	12.6%	7.6%	18.9%	5.1%	4.3%	11.6%
1 to 3 Months After Graduation	13.2%	14.3%	24.4%	17.9%	19.6%	17.3%
3 to 6 Months After Graduation	20.1%	16.0%	20.5%	12.8%	4.3%	17.1%
6 to 9 Months After Graduation	3.8%	6.7%	10.2%	0.0%	0.0%	5.5%
More than 9 Months After Graduation	7.5%	1.7%	1.6%	2.6%	2.2%	3.7%
Number Responding	159	119	127	39	46	490

Southern Illinois University Edwardsville
Survey of 1999 Baccalaureate Graduates -- One Year Ou
Survey Responses -- Part I
Employment Questions

School Detail, con't.	CAS	Bus	Educ	Engr	Nursing	Total
7. Annual Earned Income in Current Job Before Taxes						
Employed Full-Time						
Less Than \$15,000	4.0%	0.0%	9.3%	0.0%	0.0%	3.7%
\$15,000 to 19,999	6.5%	1.9%	15.7%	0.0%	0.0%	6.6%
\$20,000 to \$24,999	29.0%	11.2%	18.5%	0.0%	8.8%	17.4%
\$25,000 to \$29,999	21.8%	11.2%	39.8%	0.0%	26.5%	22.2%
\$30,000 to \$34,999	25.8%	23.4%	13.9%	11.1%	29.4%	21.0%
\$35,000 to \$39,999	8.1%	15.0%	1.9%	19.4%	14.7%	9.8%
\$40,000 or More	4.8%	37.4%	0.9%	69.4%	20.6%	19.3%
Number Responding	124	107	108	36	34	409
Mean Salary	\$27,078	\$37,480	\$24,328	\$45,099	\$32,748	\$31,121
Employed Part-Time						
Less Than \$5,000	4.0%	0.0%	14.3%	NA	0.0%	5.3%
5,000 to \$9,999	32.0%	0.0%	28.6%	NA	0.0%	26.3%
\$10,000 to \$14,999	32.0%	100.0%	42.9%	NA	0.0%	31.6%
\$15,000 to \$19,999	28.0%	0.0%	14.3%	NA	40.0%	26.3%
\$20,000 or More	4.0%	0.0%	0.0%	NA	60.0%	10.5%
Number Responding	25	1	7	0	5	38
Mean Salary	\$11,661	\$10,000	\$10,150	NA	\$21,500	\$11,677
8. Bachelor's Degree Preparation for Job						
Very Well	19.0%	15.1%	23.2%	25.6%	11.6%	19.0%
Well	32.7%	35.3%	43.2%	33.3%	37.2%	36.5%
Adequately	32.7%	39.5%	25.6%	38.5%	44.2%	34.0%
Inadequately	10.5%	5.9%	4.0%	2.6%	7.0%	6.7%
Poorly	2.6%	3.4%	1.6%	0.0%	0.0%	2.1%
Very Poorly	2.6%	0.8%	2.4%	0.0%	0.0%	1.7%
Number Responding	153	119	125	39	43	479
9a. Primary Occupation						
Management	8.7%	13.7%	2.4%	2.6%	0.0%	6.9%
Business Operations	4.7%	15.4%	2.4%	0.0%	0.0%	5.9%
Financial Specialists	0.7%	23.9%	0.8%	0.0%	0.0%	6.3%
Computer Specialists	1.3%	23.1%	0.0%	21.1%	0.0%	7.8%
Mathematical Scientists and Technicians	1.3%	0.0%	0.0%	0.0%	0.0%	0.4%
Architects, Surveyors, and Cartographers	1.3%	0.0%	0.0%	0.0%	0.0%	0.4%
Engineers and Related Technicians	0.7%	0.9%	0.0%	71.1%	0.0%	6.1%
Life & Physical Scientists, and Technicians	14.0%	0.0%	0.0%	0.0%	0.0%	4.4%
Social Scientists	1.3%	0.0%	2.4%	0.0%	0.0%	1.1%
Health: Doctors	0.0%	0.0%	0.0%	0.0%	0.0%	0.0%
Health: Registered Nurses	0.0%	0.0%	0.0%	0.0%	93.5%	9.0%
Health: Theratpists	0.0%	0.0%	0.0%	0.0%	0.0%	0.0%
Health: Oth Practitnrs, Prof.s, & Suppt Wkrs	4.7%	0.9%	3.2%	0.0%	0.0%	2.5%
Community & Social Service	9.3%	0.0%	4.8%	0.0%	0.0%	4.2%
Legal: Attorneys/Judges	0.0%	0.0%	0.0%	0.0%	0.0%	0.0%
Legal: Legal Support Workers	0.7%	1.7%	0.0%	0.0%	0.0%	0.6%
Education: Early Childhood Teachers	0.0%	0.0%	10.4%	0.0%	0.0%	2.7%
Education: Elementary School Teachers	4.0%	0.9%	32.8%	0.0%	0.0%	10.1%
Education: Middle School Teachers	2.7%	0.0%	10.4%	0.0%	0.0%	3.6%
Education: Secondary School Teachers	6.0%	0.0%	2.4%	0.0%	0.0%	2.5%
Education: Special Education Teachers	0.0%	0.0%	8.8%	0.0%	0.0%	2.3%
Education: Other, except Administrators	8.7%	0.0%	5.6%	0.0%	0.0%	4.2%
continued						

Southern Illinois University Edwardsville
Survey of 1999 Baccalaureate Graduates -- One Year Ou
Survey Responses -- Part I
Employment Questions

School Detail, con't.	CAS	Bus	Educ	Engr	Nursing	Total
9a. continuation of Primary Occupation						
Library Occupations	0.0%	0.0%	0.0%	0.0%	0.0%	0.0%
Art and Design Workers	2.7%	0.9%	0.8%	0.0%	2.2%	1.5%
Entertainment, Performers, Sports & Related	2.0%	0.0%	0.0%	0.0%	0.0%	0.6%
Media and Communication Workers	7.3%	0.0%	0.0%	0.0%	0.0%	2.3%
Sales	6.0%	12.0%	2.4%	0.0%	0.0%	5.5%
Office & Administration	6.0%	4.3%	4.8%	0.0%	0.0%	4.2%
Protective Services	2.0%	0.0%	3.2%	0.0%	0.0%	1.5%
Food Preparation & Serving	0.7%	0.0%	1.6%	0.0%	2.2%	0.8%
Buildings & Grounds Maintenance	0.0%	0.0%	0.0%	0.0%	0.0%	0.0%
Personal Care and Service	0.0%	0.9%	0.8%	0.0%	2.2%	0.6%
Farming, Fishing, and Forestry	0.0%	0.0%	0.0%	0.0%	0.0%	0.0%
Construction & Extractive	0.0%	0.9%	0.0%	2.6%	0.0%	0.4%
Installation, Maintenance, & Repair	0.7%	0.0%	0.0%	0.0%	0.0%	0.2%
Production	0.0%	0.9%	0.0%	0.0%	0.0%	0.2%
Transportation and Material Moving	0.0%	0.0%	0.0%	0.0%	0.0%	0.0%
Military	2.7%	0.0%	0.0%	2.6%	0.0%	1.1%
Number Responding	150	117	125	38	46	476
9b. Industry						
Agriculture, Forestry, and Fishing	0.0%	1.3%	0.0%	0.0%	0.0%	0.3%
Mining	0.0%	0.0%	0.0%	0.0%	0.0%	0.0%
Utilities	0.0%	8.8%	0.9%	3.3%	0.0%	2.3%
Construction	0.0%	5.0%	0.0%	26.7%	0.0%	3.1%
Manufacturing	3.3%	17.5%	0.0%	6.7%	0.0%	5.1%
Wholesale Trade	2.5%	0.0%	0.0%	0.0%	0.0%	0.8%
Retail Trade	5.0%	8.8%	2.6%	0.0%	0.0%	4.1%
Transportation	0.8%	1.3%	0.0%	13.3%	2.2%	1.8%
Information	0.8%	5.0%	0.0%	3.3%	0.0%	1.5%
Finance & Insurance	2.5%	2.5%	1.7%	0.0%	0.0%	1.8%
Real Estate & Rental & Leasing	0.0%	1.3%	0.0%	0.0%	0.0%	0.3%
Professional, Scientific & Technical Services	14.9%	25.0%	1.7%	43.3%	0.0%	13.5%
Management of Companies & Enterprises	0.8%	2.5%	0.9%	0.0%	0.0%	1.0%
Admin & Suppt, Waste Mgmt & Remedtn Svcs	0.8%	1.3%	0.0%	0.0%	0.0%	0.5%
Educational Services	29.8%	5.0%	74.4%	0.0%	2.2%	32.6%
Health Care & Social Assistance	16.5%	3.8%	7.7%	0.0%	93.3%	18.8%
Arts, Entertainment & Recreation	8.3%	0.0%	0.0%	0.0%	0.0%	2.5%
Accommodations & Food Services	2.5%	0.0%	3.4%	0.0%	2.2%	2.0%
Other Services (except Public Admin)	8.3%	8.8%	6.8%	3.3%	0.0%	6.6%
Public Administration	3.3%	2.5%	0.0%	0.0%	0.0%	1.5%
Number Responding	121	80	117	30	45	393

* The missing school response has been added to the College of Arts and Sciences.

6/22/2001

Southern Illinois University Edwardsville
Survey of 1999 Baccalaureate Graduates -- One Year Out
Survey Responses -- Part II
Education Questions

School Detail	CAS	Bus	Educ	Engr	Nursing	Total
Number of Survey Respondents	180	132	155	40	46	553
10. Enrolled in College or University Since Degree?						
Yes, Full Time	14.5%	7.6%	17.5%	5.1%	8.7%	12.6%
Yes, Part Time	16.8%	11.5%	16.2%	15.4%	21.7%	15.7%
No	68.7%	80.9%	66.2%	79.5%	69.6%	71.8%
Number Responding	179	131	154	39	46	549
11. Pursuing or Have Completed an Additional Degree?						
Yes	52.3%	40.4%	66.7%	53.3%	56.5%	54.3%
No	47.7%	59.6%	33.3%	46.7%	43.5%	45.7%
Number Responding	86	52	69	15	23	245
The remaining questions in Part II were to be answered only by respondents who were pursuing or had completed another degree.						
	45	21	46	8	13	133
11b. Pursuing or Completed Which Degree?						
Associate's	2.2%	0.0%	0.0%	0.0%	0.0%	0.8%
Second Bachelor's	8.9%	4.8%	6.5%	0.0%	15.4%	7.6%
Academic Master's (MA, MS, MEd, etc)	33.3%	23.8%	65.2%	85.7%	30.8%	45.5%
Prof. Master's or Ed Specialist	20.0%	57.1%	13.0%	14.3%	38.5%	25.0%
Medicine (MD, OD)	8.9%	0.0%	0.0%	0.0%	0.0%	3.0%
Health Prof. (dentistry, pharmacy, etc.)	4.4%	0.0%	0.0%	0.0%	7.7%	2.3%
Theology/Divinity	2.2%	0.0%	0.0%	0.0%	0.0%	0.8%
Law (LLB, JD)	6.7%	0.0%	4.3%	0.0%	7.7%	4.5%
Doctorate (PhD, EdD, DA, DBA, etc.)	2.2%	0.0%	6.5%	0.0%	0.0%	3.0%
Other	11.1%	14.3%	4.3%	0.0%	0.0%	7.6%
Number Responding	45	21	46	7	13	132
12. How Well Bach. Degree Prepared You for Additional Degree						
Very Well	33.3%	28.6%	30.4%	42.9%	27.3%	31.5%
Well	28.6%	33.3%	39.1%	28.6%	36.4%	33.9%
Adequately	33.3%	33.3%	26.1%	28.6%	18.2%	29.1%
Inadequately	2.4%	0.0%	2.2%	0.0%	18.2%	3.1%
Poorly	0.0%	4.8%	0.0%	0.0%	0.0%	0.8%
Very Poorly	2.4%	0.0%	2.2%	0.0%	0.0%	1.6%
Number Responding	42	21	46	7	11	127

The missing response for School will be included in the College of Arts and Sciences.

Southern Illinois University Edwardsville
Survey of 1999 Baccalaureate Graduates -- One Year Out
Survey Responses -- Part III
Satisfaction Questions

School Detail	CAS	Bus	Educ	Engr	Nursing	Total
Number of Survey Respondents	180	132	155	40	46	553
13. Present Attitude Towards the University						
Strongly Positive	14.8%	16.3%	16.3%	10.8%	15.9%	15.4%
Positive	48.9%	55.8%	60.5%	75.7%	56.8%	56.3%
Somewhat Positive	24.4%	20.2%	15.6%	10.8%	20.5%	19.7%
Somewhat Negative	6.8%	3.1%	4.8%	2.7%	4.5%	4.9%
Negative	1.7%	3.1%	1.4%	0.0%	0.0%	1.7%
Strongly Negative	3.4%	1.6%	1.4%	0.0%	2.3%	2.1%
Number Responding	176	129	147	37	44	533
14. Present Attitude Towards your Bachelor's Degree Major						
Strongly Positive	29.5%	26.4%	34.0%	21.1%	13.6%	28.1%
Positive	40.3%	49.6%	47.6%	57.9%	68.2%	48.1%
Somewhat Positive	23.3%	17.8%	13.6%	18.4%	15.9%	18.4%
Somewhat Negative	4.0%	5.4%	2.0%	2.6%	2.3%	3.6%
Negative	2.3%	0.0%	2.0%	0.0%	0.0%	1.3%
Strongly Negative	0.6%	0.8%	0.7%	0.0%	0.0%	0.6%
Number Responding	176	129	147	38	44	534

The missing response for School will be included in the College of Arts and Sciences.

6/28/2001

Southern Illinois University Edwardsville
Survey of 1999 Baccalaureate Graduates -- One Year Out
Survey Responses -- Part IV
Educational Practices Questions

School Detail	CAS	Bus	Educ	Engr	Nursing	Total
Number of Survey Respondents	180	132	155	40	46	553
15. Faculty in Major Were Accessible Outside of Class						
Very Often	30.2%	20.6%	19.5%	25.6%	37.0%	25.1%
Often	48.0%	55.0%	63.0%	48.7%	39.1%	53.2%
Sometimes	19.6%	21.4%	16.2%	25.6%	23.9%	19.9%
Infrequently	2.2%	2.3%	1.3%	0.0%	0.0%	1.6%
Never	0.0%	0.8%	0.0%	0.0%	0.0%	0.2%
Number Responding	179	131	154	39	46	549
16. In Major, Student was Expected to Work Cooperatively with Other Students						
Very Often	32.4%	64.9%	44.8%	23.1%	50.0%	44.4%
Often	34.6%	29.8%	39.6%	53.8%	34.8%	36.2%
Sometimes	25.1%	5.3%	14.9%	17.9%	15.2%	16.2%
Infrequently	7.3%	0.0%	0.6%	5.1%	0.0%	2.9%
Never	0.6%	0.0%	0.0%	0.0%	0.0%	0.2%
Number Responding	179	131	154	39	46	549
17. In Major, Faculty Encouraged Student to Challenge Ideas (student's, other students, and in readings & materials)						
Very Often	33.1%	15.3%	17.6%	7.7%	24.4%	22.0%
Often	31.5%	40.5%	52.3%	41.0%	37.8%	40.7%
Sometimes	24.2%	36.6%	24.8%	33.3%	24.4%	28.0%
Infrequently	10.7%	6.9%	5.2%	15.4%	11.1%	8.6%
Never	0.6%	0.8%	0.0%	2.6%	2.2%	0.7%
Number Responding	178	131	153	39	45	546
18. In Major, Faculty Used Appropriate Teaching Activities to Help Student Learn						
Very Often	28.5%	13.7%	35.1%	17.9%	20.0%	25.4%
Often	41.3%	58.0%	50.6%	43.6%	53.3%	49.1%
Sometimes	25.7%	24.4%	14.3%	33.3%	22.2%	22.4%
Infrequently	4.5%	3.1%	0.0%	5.1%	2.2%	2.7%
Never	0.0%	0.8%	0.0%	0.0%	2.2%	0.4%
Number Responding	179	131	154	39	45	548
19. In Major, Faculty had High Expectations for Quality Of Student Work						
Very Often	35.2%	26.2%	35.1%	17.9%	35.6%	31.8%
Often	44.7%	56.2%	48.1%	61.5%	48.9%	49.9%
Sometimes	17.3%	15.4%	14.3%	17.9%	13.3%	15.7%
Infrequently	2.2%	2.3%	2.6%	2.6%	2.2%	2.4%
Never	0.6%	0.0%	0.0%	0.0%	0.0%	0.2%
Number Responding	179	130	154	39	45	547
20. In Major, Faculty Provided Timely Feedback						
Very Often	26.8%	18.3%	29.9%	10.3%	26.7%	24.5%
Often	49.7%	53.4%	55.8%	51.3%	35.6%	51.3%
Sometimes	20.7%	22.9%	11.7%	35.9%	31.1%	20.6%
Infrequently	2.8%	4.6%	2.6%	2.6%	4.4%	3.3%
Never	0.0%	0.8%	0.0%	0.0%	2.2%	0.4%
Number Responding	179	131	154	39	45	548

Southern Illinois University Edwardsville
Survey of 1999 Baccalaureate Graduates -- One Year Out
Survey Responses -- Part IV
Educational Practices Questions

School Detail, cont'd	CAS	Bus	Educ	Engr	Nursing	Total
21. In Major, Faculty Encouraged Students' Questions and Discussion in Class						
Very Often	40.2%	35.1%	49.0%	33.3%	40.0%	41.0%
Often	43.6%	49.6%	41.2%	41.0%	40.0%	43.9%
Sometimes	12.3%	11.5%	9.2%	23.1%	15.6%	12.2%
Infrequently	3.9%	3.1%	0.7%	2.6%	2.2%	2.6%
Never	0.0%	0.8%	0.0%	0.0%	2.2%	0.4%
Number Responding	179	131	153	39	45	547
22. In Major, Student Spent Necessary Time and Energy to Come to Class Prepared						
Very Often	39.1%	29.8%	58.4%	38.5%	40.0%	42.3%
Often	44.7%	48.9%	33.8%	43.6%	51.1%	43.1%
Sometimes	15.1%	19.1%	6.5%	15.4%	8.9%	13.1%
Infrequently	1.1%	2.3%	0.6%	2.6%	0.0%	1.3%
Never	0.0%	0.0%	0.6%	0.0%	0.0%	0.2%
Number Responding	179	131	154	39	45	548

The missing response for School will be included in the College of Arts and Sciences
6/25/2001

Southern Illinois University Edwardsville
Survey of 1999 Baccalaureate Graduates -- One Year Out
Survey Responses -- Part V
Program Quality Questions

School Detail	CAS	Bus	Educ	Engr	Nursing	Total
Number of Survey Respondents	180	132	155	40	46	553
28A. Quality of Major in Offering						
Sufficient Courses						
Excellent	32.4%	19.8%	29.2%	23.7%	34.8%	28.1%
Good	45.3%	58.8%	56.5%	57.9%	54.3%	53.3%
Fair	17.9%	20.6%	12.3%	18.4%	10.9%	16.4%
Poor	4.5%	0.8%	1.9%	0.0%	0.0%	2.2%
Number Responding	179	131	154	38	46	548
28B. Quality of Major in Offering						
Convenient Class Times						
Excellent	19.6%	22.9%	23.5%	7.7%	30.4%	21.5%
Good	48.6%	51.9%	52.3%	43.6%	32.6%	48.7%
Fair	26.3%	22.9%	20.9%	35.9%	28.3%	24.8%
Poor	5.6%	2.3%	3.3%	12.8%	8.7%	4.9%
Number Responding	179	131	153	39	46	548
28C. Quality of Major in Offering						
Logical Class Sequences						
Excellent	25.7%	29.8%	30.9%	23.1%	28.3%	28.2%
Good	50.8%	48.9%	59.9%	61.5%	50.0%	53.6%
Fair	20.1%	20.6%	7.9%	15.4%	21.7%	16.6%
Poor	3.4%	0.8%	1.3%	0.0%	0.0%	1.6%
Number Responding	179	131	152	39	46	547
29. Quality of Faculty in Major						
Excellent	42.4%	34.6%	44.1%	25.6%	41.3%	39.7%
Good	44.1%	50.8%	51.3%	43.6%	52.2%	48.3%
Fair	11.9%	13.8%	4.6%	30.8%	6.5%	11.2%
Poor	1.7%	0.8%	0.0%	0.0%	0.0%	0.7%
Number Responding	177	130	152	39	46	544
30. Grading Standards in Major Were:						
Too High	2.3%	5.4%	1.3%	7.7%	0.0%	2.9%
About Right	85.9%	85.4%	91.5%	82.1%	84.8%	87.0%
Too Low	11.9%	9.2%	7.2%	10.3%	15.2%	10.1%
Number Responding	177	130	153	39	46	545

The missing response for School will be included in the College of Arts and Sciences.

6/26/2001

Southern Illinois University Edwardsville
Survey of 1999 Baccalaureate Graduates -- One Year Out
Survey Responses -- Part VI
Educational Effectiveness Questions

School Detail	CAS	Bus	Educ	Engr	Nursing	Total
Number of Survey Respondents	180	132	155	40	46	553
26. Helpfulness of University Experiences in:						
A. Developing Critical Thinking Ability						
Extremely Helpful	22.2%	10.0%	15.7%	23.7%	11.1%	16.7%
Very Helpful	39.4%	46.9%	45.1%	50.0%	46.7%	44.1%
Moderately Helpful	28.9%	33.8%	32.7%	26.3%	31.1%	31.1%
Slightly Helpful	7.8%	6.2%	4.6%	0.0%	11.1%	6.2%
Not Helpful	1.7%	3.1%	2.0%	0.0%	0.0%	1.8%
Number Responding	180	130	153	38	45	546
B. Developing Sense of Ethics						
Extremely Helpful	13.3%	3.8%	12.4%	7.7%	17.8%	10.8%
Very Helpful	35.6%	38.5%	37.9%	30.8%	33.3%	36.4%
Moderately Helpful	28.9%	41.5%	34.0%	38.5%	35.6%	34.6%
Slightly Helpful	11.7%	10.0%	9.8%	15.4%	8.9%	10.8%
Not Helpful	10.6%	6.2%	5.9%	7.7%	4.4%	7.5%
Number Responding	180	130	153	39	45	548
C. Understanding People with Different Backgrounds, Habits, Values, Appearances and Abilities						
Extremely Helpful	27.8%	14.6%	28.1%	15.4%	17.8%	23.0%
Very Helpful	33.9%	35.4%	45.1%	23.1%	46.7%	37.7%
Moderately Helpful	22.8%	34.6%	16.3%	41.0%	24.4%	25.2%
Slightly Helpful	11.1%	8.5%	9.2%	17.9%	8.9%	10.2%
Not Helpful	4.4%	6.9%	1.3%	2.6%	2.2%	3.8%
Number Responding	180	130	153	39	45	548
D. Becoming a More Active Citizen						
Extremely Helpful	6.7%	2.3%	7.8%	5.1%	8.9%	6.0%
Very Helpful	25.7%	17.7%	26.1%	10.3%	28.9%	23.1%
Moderately Helpful	30.2%	39.2%	37.9%	46.2%	40.0%	36.4%
Slightly Helpful	21.2%	20.8%	18.3%	23.1%	13.3%	19.8%
Not Helpful	16.2%	20.0%	9.8%	15.4%	8.9%	14.7%
Number Responding	179	130	153	39	45	547
E. Improving Quality of Life (aside from financial benefits)						
Extremely Helpful	12.8%	5.4%	14.4%	2.6%	6.7%	10.3%
Very Helpful	36.3%	40.0%	37.3%	38.5%	44.4%	38.3%
Moderately Helpful	31.8%	32.3%	34.0%	38.5%	28.9%	32.8%
Slightly Helpful	11.7%	16.2%	10.5%	15.4%	15.6%	13.0%
Not Helpful	7.3%	6.2%	3.9%	5.1%	4.4%	5.7%
Number Responding	179	130	153	39	45	547
F. Developing Reasoning Skills						
Extremely Helpful	17.3%	10.1%	15.0%	21.1%	8.9%	14.5%
Very Helpful	45.3%	44.2%	47.1%	52.6%	48.9%	46.3%
Moderately Helpful	26.3%	34.1%	28.8%	23.7%	24.4%	28.5%
Slightly Helpful	7.8%	10.1%	7.8%	0.0%	17.8%	8.6%
Not Helpful	3.4%	1.6%	1.3%	2.6%	0.0%	2.0%
Number Responding	179	129	153	38	45	545

Southern Illinois University Edwardsville
Survey of 1999 Baccalaureate Graduates -- One Year Out
Survey Responses -- Part VI
Educational Effectiveness Questions

School Detail, con't.	CAS	Bus	Educ	Engr	Nursing	Total
G. Viewing Problems from Different Perspectives						
Extremely Helpful	27.7%	17.8%	20.9%	23.1%	13.3%	21.9%
Very Helpful	36.2%	43.4%	47.1%	46.2%	53.3%	43.1%
Moderately Helpful	27.1%	29.5%	23.5%	25.6%	26.7%	26.5%
Slightly Helpful	5.1%	7.0%	7.8%	5.1%	4.4%	6.3%
Not Helpful	4.0%	2.3%	0.7%	0.0%	2.2%	2.2%
Number Responding	177	129	153	39	45	544
H. Developing Ability to Solve Problems						
Extremely Helpful	26.4%	16.3%	19.6%	28.2%	15.6%	21.3%
Very Helpful	37.6%	45.0%	41.8%	59.0%	40.0%	42.3%
Moderately Helpful	25.8%	32.6%	32.7%	10.3%	35.6%	29.0%
Slightly Helpful	7.9%	4.7%	5.2%	2.6%	6.7%	5.9%
Not Helpful	2.2%	1.6%	0.7%	0.0%	2.2%	1.5%
Number Responding	178	129	153	39	45	545
I. Making Informed Decisions as a Citizen						
Extremely Helpful	16.2%	10.0%	12.4%	5.1%	13.3%	12.6%
Very Helpful	42.5%	42.3%	32.0%	17.9%	40.0%	37.5%
Moderately Helpful	21.8%	32.3%	38.6%	56.4%	31.1%	32.2%
Slightly Helpful	12.8%	11.5%	11.8%	17.9%	13.3%	12.6%
Not Helpful	6.7%	3.8%	5.2%	2.6%	2.2%	4.9%
Number Responding	179	130	153	39	45	547
J. Developing Writing Skills						
Extremely Helpful	22.9%	28.5%	25.5%	10.3%	20.0%	23.8%
Very Helpful	38.0%	35.4%	43.8%	30.8%	26.7%	37.5%
Moderately Helpful	26.3%	29.2%	17.0%	38.5%	37.8%	26.2%
Slightly Helpful	8.4%	3.8%	9.8%	12.8%	13.3%	8.4%
Not Helpful	4.5%	3.1%	3.9%	7.7%	2.2%	4.0%
Number Responding	179	130	153	39	45	547
K. Developing Oral Communication Skills						
Extremely Helpful	25.6%	26.9%	21.6%	10.3%	17.8%	23.0%
Very Helpful	37.8%	44.6%	47.1%	35.9%	42.2%	42.2%
Moderately Helpful	24.4%	22.3%	23.5%	38.5%	24.4%	24.7%
Slightly Helpful	8.3%	3.8%	7.2%	12.8%	15.6%	7.9%
Not Helpful	3.9%	2.3%	0.7%	2.6%	0.0%	2.2%
Number Responding	180	130	153	39	45	548
L. Developing Knowledge of Scientific and Technological Developments						
Extremely Helpful	20.0%	13.2%	14.4%	28.2%	15.6%	17.0%
Very Helpful	29.4%	35.7%	45.8%	51.3%	53.3%	39.0%
Moderately Helpful	33.3%	31.8%	25.5%	15.4%	22.2%	28.6%
Slightly Helpful	12.8%	16.3%	12.4%	5.1%	6.7%	12.5%
Not Helpful	4.4%	3.1%	2.0%	0.0%	2.2%	2.9%
Number Responding	180	129	153	39	45	547

Southern Illinois University Edwardsville
Survey of 1999 Baccalaureate Graduates -- One Year Out
Survey Responses -- Part VI
Educational Effectiveness Questions

School Detail, con't.	CAS	Bus	Educ	Engr	Nursing	Total
27. Undergraduate Education Broadened Interest Beyond Subjects in Major						
Strongly Agree	25.7%	14.7%	21.6%	15.8%	13.6%	20.3%
Agree	45.3%	54.3%	44.4%	60.5%	40.9%	47.9%
Neutral	20.7%	24.8%	28.8%	18.4%	38.6%	25.2%
Disagree	6.7%	5.4%	3.3%	5.3%	6.8%	5.3%
Strongly Disagree	1.7%	0.8%	2.0%	0.0%	0.0%	1.3%
Number Responding	179	129	153	38	44	544
28. Importance of College Education to:						
A. Personal Life						
Very Important	62.2%	58.0%	66.2%	66.7%	57.8%	62.3%
Moderately Important	22.2%	31.3%	24.7%	17.9%	22.2%	24.8%
Slightly Important	10.6%	4.6%	7.1%	15.4%	20.0%	9.3%
Not Important	5.0%	6.1%	1.9%	0.0%	0.0%	3.6%
Number Responding	180	131	154	39	45	550
B. Community Life						
Very Important	28.9%	27.5%	41.8%	35.9%	28.9%	32.7%
Moderately Important	37.8%	32.1%	39.9%	33.3%	44.4%	37.2%
Slightly Important	20.6%	26.0%	12.4%	17.9%	22.2%	19.5%
Not Important	12.8%	14.5%	5.9%	12.8%	4.4%	10.6%
Number Responding	180	131	153	39	45	549
C. Professional Life						
Very Important	65.9%	66.9%	80.4%	82.1%	77.8%	72.3%
Moderately Important	23.5%	23.1%	13.7%	17.9%	11.1%	19.2%
Slightly Important	6.7%	7.7%	4.6%	0.0%	8.9%	6.0%
Not Important	3.9%	2.3%	1.3%	0.0%	2.2%	2.4%
Number Responding	179	130	153	39	45	547
29. Quality of SIUE Education Relative to That of Friends at Other Schools						
Among the Best	10.7%	13.7%	19.0%	7.7%	8.9%	13.4%
Above Average	32.6%	41.2%	37.3%	41.0%	31.1%	36.4%
Average	46.6%	39.7%	41.2%	46.2%	51.1%	43.8%
Below Average	9.6%	4.6%	2.0%	5.1%	8.9%	5.9%
Among the Worst	0.6%	0.8%	0.7%	0.0%	0.0%	0.5%
Number Responding	178	131	153	39	45	547
30. Involvement Since Bachelor's Degree with:						
A. Organized, Formal, Career Related Learning (non-degree)						
Currently Involved	29.9%	34.4%	39.0%	23.1%	29.5%	33.0%
Have Been Involved	36.2%	38.9%	33.1%	38.5%	38.6%	36.3%
Never Involved	33.9%	26.7%	27.9%	38.5%	31.8%	30.6%
Number Responding	177	131	154	39	44	546
B. Personal Enrichment Studies						
Currently Involved	21.0%	17.1%	20.9%	20.5%	17.8%	19.7%
Have Been Involved	37.5%	31.8%	40.5%	33.3%	48.9%	37.6%
Never Involved	41.5%	51.2%	38.6%	46.2%	33.3%	42.6%
Number Responding	176	129	153	39	45	543

Southern Illinois University Edwardsville
Survey of 1999 Baccalaureate Graduates -- One Year Out
Survey Responses -- Part VI
Educational Effectiveness Questions

School Detail, con't.	CAS	Bus	Educ	Engr	Nursing	Total
C. Professional Activities or Organizations						
Currently Involved	34.5%	33.6%	40.5%	28.2%	42.2%	36.1%
Have Been Involved	28.2%	32.1%	34.6%	33.3%	31.1%	31.6%
Never Involved	37.3%	34.4%	24.8%	38.5%	26.7%	32.3%
Number Responding	177	131	153	39	45	546
D. Volunteer Work / Community Svc Activities or Organizations						
Currently Involved	25.8%	15.4%	31.2%	13.2%	20.5%	23.5%
Have Been Involved	34.3%	36.9%	39.6%	28.9%	38.6%	36.4%
Never Involved	39.9%	47.7%	29.2%	57.9%	40.9%	40.1%
Number Responding	178	130	154	38	44	545
E. Social / Recreational Activities or Organizations						
Currently Involved	29.5%	37.4%	41.2%	33.3%	28.9%	34.9%
Have Been Involved	40.3%	29.0%	37.9%	28.2%	44.4%	36.4%
Never Involved	30.1%	33.6%	20.9%	38.5%	26.7%	28.7%
Number Responding	176	131	153	39	45	545
F. Political Activities or Organizations						
Currently Involved	9.1%	4.6%	4.6%	10.3%	4.5%	6.5%
Have Been Involved	20.6%	13.8%	15.0%	15.4%	18.2%	16.8%
Never Involved	70.3%	81.5%	80.4%	74.4%	77.3%	76.7%
Number Responding	175	130	153	39	44	542
G. Religious / Ethical Activities or Organizations						
Currently Involved	34.6%	23.8%	36.6%	34.2%	28.9%	32.1%
Have Been Involved	23.5%	26.2%	26.1%	21.1%	31.1%	25.3%
Never Involved	41.9%	50.0%	37.3%	44.7%	40.0%	42.6%
Number Responding	179	130	153	38	45	546
H. Support or Participation in the Arts (music, drama, dance, art)						
Currently Involved	27.4%	13.8%	20.9%	7.7%	6.7%	19.2%
Have Been Involved	25.1%	34.6%	30.7%	38.5%	22.2%	29.7%
Never Involved	47.5%	51.5%	48.4%	53.8%	71.1%	51.1%
Number Responding	179	130	153	39	45	547

The missing response for School will be included in the College of Arts and Sciences.

6/28/2001