



- ▶ INFORMATION ON CHANGES TO NIH REVIEW PROCESS2
- ▶ NSF GUIDELINES CHANGE IN '093
- ▶ ILLINOIS EDUCATIONAL RESEARCH COUNCIL REPORTS4
- ▶ SPRING SYMPOSIUM UPDATE6
- ▶ CHECK OUT THE AWARDED & SUBMITTED GRANTS AND CONTRACTS.....8

○ ISSUE 1 | ○ VOLUME 27 | ○ 2008



Office of Research and Projects

Research Highlights

KEEPING YOU UP TO DATE ON THE LATEST RESEARCH

Transformative Research: A New Innovation Imperative

The National Science Foundation (NSF) and the National Institutes of Health (NIH) recently announced agency-wide initiatives supporting highly innovative, creative, “out of the box” research. The NSF has issued a notice to presidents of universities and colleges and heads of other NSF awardee organizations that it has revised its review criteria for all its programs (see Important Notice No. 130 September 24, 2007). In this notice, Dr. Arden Bement notes that the concept of transformative research “is not new to the NSF.” However, in the spirit of continuous improvement, the review criteria at NSF have been revised explicitly to include the term, which is being used “to describe a range of endeavors which promise extraordinary outcomes, such as: revolutionizing entire disciplines; creating entirely new fields; or disrupting accepted theories and perspectives—

in other words, those endeavors which have the potential to change the way we address challenges in science, engineering, and innovation.” In contrast to the approach taken by NSF, the NIH has created a separate funding mechanism, the Roadmap Transformative R01 Program, dedicated explicitly to supporting “exceptionally innovative, high risk, original and/or unconventional research with the potential to create new or challenge existing scientific paradigms” (<http://grants.nih.gov/grants/guide/rfa-files/RFA-RM-08-029.html>). The renewed emphasis on innovation is the most recent response to the America COMPETES Act, signed into law by the President August 9, 2007. It is expected that other federal funding agencies will announce similar initiatives in the coming months.

—Christa Johnson

SIUE Researchers Participate in ICTS

Several researchers from SIUE’s School of Nursing, Education, and Kinesiology have been invited to submit collaborative research projects to Washington University’s Institute of Clinical and Translational Sciences. The Institute, formed under a larger grant initiative called the Clinical and Translational Science Award Program (CTSA), strives to establish relationships between clinical researchers and practitioners, promoting the translation of

(continued p. 3)



Featured External Awards

Dr. Louise Flick, Family Health, Community Health Nursing: CDC and NIH award to participate in the National Children’s Study (NCS)—Largest research grant in SIUE history!

Dr. Michael Shaw, Chemistry: NSF’s Major Research Instrumentation Program (MRI)

Dr. Stephen Tamari, Historical Studies: Fulbright: “Bilad al-Shamism: The Politics of Identity in Early Modern Syria”

Upcoming Internal Competition Deadlines:

Monday, December 1: Distinguished Professor Award

Friday, March 20: Vaughnie Lindsay New Investigator Award

Friday, February 6: Seed Grants for Transitional and Exploratory Projects (STEP)

For more information on these competitions please visit www.siu.edu/graduate.

NIH to Improve Peer Review Process

Beginning January 2009 the National Institutes of Health will implement changes to its peer review system. The procedure by which expert panelists rate applications will undergo revisions meant to streamline the process, improve transparency, and increase fairness. Three main priorities guide the suggested revisions: to “engage the best reviewers;” “improve the quality and transparency of review;” and “ensure balanced, fair reviews across scientific fields and career stages while reducing the administrative burden.” In order to garner the best reviewers, the NIH will work to recruit the most qualified panelists, offering them training and incentives to stay on as reviewers for more than one grant cycle. Improving the quality and fairness of the review is the main goal as NIH administrators edit the scoring scale; offer feedback for “streamlined,” or rejected, applications; and shorten and restructure application forms. The NIH is also considering ways to fund the best science earlier, thus reducing the need for resubmissions. Possible measures for improving efficiency include tracking new and amended applications and reviewing like applica-

tions together. The NIH has also released a new policy decreasing the number of allowed resubmissions from two to one. Starting with applications for the January 25, 2009 due date, all original (i.e. never been submitted) and competing renewal applications will be permitted only one resubmission. To facilitate the transition, all original and competing renewal applications submitted before the January 25th deadline are allowed two resubmissions.

For more information about this and other guidelines governing peer review enhancement, visit <http://enhancing-peer-review.nih.gov>.

For a full set of application submission dates for upcoming grant cycles, view: <http://grants.nih.gov/grants/funding/submissionschedule.htm>.

-Patience Graybill Condellone

Want to improve your funding applications? Become a reviewer!

As the June edition of the *Chronicle of Higher Education* describes, review processes for federally-funded grants are often perceived in mysterious terms. Private sessions in closed quarters feed “academic folklore,” inspiring any variety of scenarios including fastidious reviewers and heated debates over topics such as font size and scholarly merit. Yet, as Karen Markin’s article suggests, volunteering as a grant reviewer might offer the best way to dispel myths and open new career pathways for researchers. The best way to understand the process, after all, is to become part of it. Adopting the mindset of a reviewer may help you write better proposals and develop your research. Besides, as mentioned above, major granting agencies are always looking for qualified experts to serve as panelists.

Websites for Potential Reviewers:

The National Science Foundation (NSF):

<http://www.nsf.gov/bfa/dias/policy/meritreview/reviewer.jsp>

National Institutes for Health:

<http://cms.csr.nih.gov/PeerReviewMeetings/BestPractices>

Young researchers may find themselves in the minority on NIH’s panels. For more resources for new investigators see:

<http://cms.csr.nih.gov/resourcesforapplicants>

National Endowment for the Humanities (NEH):

<https://securegrants.neh.gov/PrismNew/Faq.html>

For more Information see: Markin, Karen. “How to Become a Grant Reviewer.” *The Chronicle of Higher Education*. June 6, 2008. <http://chronicle.com/weekly/v54/i39/39c00101.htm>

—Patience Graybill Condellone

Here are some points to ponder as you consider working as a reviewer.

- *Your expertise could be used in a more general category:* Agencies look for people with expertise in the fields that a given round of proposals will support. That field of activity might be broadly defined into areas such as Chemistry or Literature, so one need not worry about particular subfields. The agencies are also looking increasingly at multidisciplinary proposals, seeking diverse panelists to cover a range of disciplines.
- *Junior faculty may also be considered:* Many different organizations need grant reviewers, so it is likely that you may find a panel needing your area of expertise.
- *Don’t be afraid to apply online:* Agencies employ a variety of tactics to seek out the best experts. Their websites make it easy to volunteer services.
- *Be sure to budget plenty of time:* The review process requires a substantial time commitment. Be sure you have the time to properly review the proposals before accepting invitations to serve on a panel.
- *If unable to gain a spot with a federal agency, seek more local opportunities.* SIUE’s campus programs rely heavily on the work of university panelists to review internal funding proposals. Speak to your department chair about working on a review committee, or contact Dean Christa Johnson in the Graduate School.

ICTS cont...

research into practical applications for clinicians, health-care workers, academic, and industrial colleagues. Special emphasis is placed upon career development for young investigators in translational research, offering them training as they seek to transcend the boundaries between disciplines. Researchers working with the ICTS will be provided access to the facilities at Washington University in St. Louis while conducting collaborative research with its principle investigators.

The CTSA has enabled the Institute to extend partnerships to various local universities, fostering collaborative work opportunities between Wash U, SLU, UMSL, SIUE, and the St. Louis College of Pharmacy. Participation in the ICTS thus offers SIUE's young investigators, in particular, excellent opportunities to gain funding and training, while forging important new partnerships along the way.

The following SIUE researchers have submitted proposals this year:

Researcher(s)	Project Title	Amount Requested
Arras, Rita Nursing	Development Phase I: Tobacco use in pregnancy and psychiatric disorder	\$25,000
Laura Bernaix Nursing	Feasibility of Paternal Breastfeeding Education for Hospitalized Preterm Infants	\$200,000
Kirk, Erik; Stacie Kirk; Wendy Fuchs Education, Kinesiology	Promoting cognitive development through obesity prevention in preschool children	\$18,291
Kirk, Erik Kinesiology	Resistance Training and Insulin Action in Children	\$5,166
Maurer, Marcia; Kevin Johnson; Zhi-Qing Lin Nursing, Environmental Sciences	Characterization of Persistent Pollutants in Human Cord Blood	\$99,650
Schmidt, Cindy, Nursing	Parental Practices and Teen Diabetes Self-Management: Survey Development	\$25,000

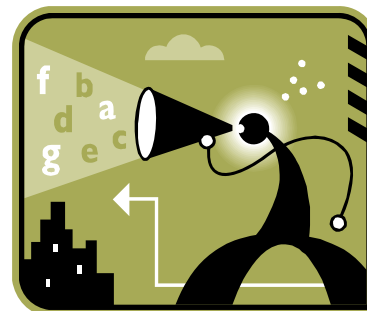


For Information on ICTS, visit the Institute's website: <http://icts.wustl.edu/>

New NSF Proposal and Award Guidelines Take Effect January 1, 2009

Please take note that applications to be submitted on or after January 5, 2009 will be subject to new guidelines as published by The Policy Office. Revisions of interest include those made to salary policy, especially that of principle investigators. Other changes affect mentoring practices, the definition of co-PI's, "letters of intent," and FastLane submissions. While these revisions will be covered in more detail in the January edition of *Research Highlights*, investigators hoping to submit after Jan. 1 should refer to the NSF Policy webpage:

See: <http://www.nsf.gov/bfa/dias/policy/>



IERC Forging Ahead to Impact Illinois Educational Policy



Dr. Kathleen Sullivan Brown, Interim Executive Director, IERC

The Illinois Education Research Council was established in 2000 at Southern Illinois University Edwardsville to provide Illinois with education research to support education policy-making and program development. The IERC undertakes independent research and policy analysis to inform and strengthen Illinois' commitment to educational opportunity for its citizens. Through publications, presentations, participation on committees and an annual research symposium, the IERC brings objective and reliable evidence to the work of state policy makers and practitioners. Here is a sampling of current IERC research projects.

Study of Teacher Induction in the Midwest

For the past two years, SRI International and the IERC have been engaged in a study of teacher induction efforts in Illinois and Ohio. The first report describes the induction policies, identifies factors affecting the design and implementation of induction programs, and presents policies and practices most likely to raise the quality of induction programs. The second phase of the study explores the relationships between various inputs—the induction and mentoring supports provided to teachers, teachers' backgrounds, and the contexts in which they are working—and various teacher outcomes—teachers' reported professional growth, efficacy, and retention.

Chicago Early Childhood Teacher Preparation Pipeline Study

After completing a study of the supply of and demand for early childhood teachers in Illinois, we found that the reserve pool of already certified teachers could be expected to meet the increased demand if salaries reflected the training and professional experience of these teachers. We also found, however, that the reserve pool was much less robust for Chicago, so that it will need to rely more heavily on the certificant pipeline which appears to have large

leakages — especially from the 'interest' to 'program enrollment' stages of institutional enrollment. The purpose of the two-year project is to examine conditions related to this "leakage." We will more closely examine enrollment and graduation data from 10 participating Chicago higher education institutions to provide a more precise analysis of the institutions' pipeline data. In addition we will survey students to examine conditions that may be preventing them from progressing through the pipeline.

Illinois Longitudinal Study of the High School Class of 2002.

The longitudinal data allow us to follow the 2002 class of Illinois public high school graduates into college. We will compare patterns of enrollment for different student groups (e.g., low-income, minority students) and examine the influence of students' high school environments, locale of upbringing and family backgrounds on these patterns. We plan to follow the cohort for six years, i.e., through the 2007-08 academic year.

Leveling Up: Narrowing the Teacher Academic Capital Gap in Illinois

This study examines the distribution, change, and impact of the Index of Teacher Academic Capital (ITAC) in all Illinois public schools from 2001 to 2006. We find that students in high-poverty and high-minority schools, especially those in Chicago, had less access to high ITAC than their counterparts elsewhere. However, high-poverty schools statewide and high-minority schools in Chicago also experienced the greatest gains in ITAC over the time period.

For more information, please go to the IERC website at ierc.siu.edu.

—Kathleen Sullivan Brown,





The Federal Transparency Act and www.USASpending.gov

In September 2006 Congress passed the Federal Funding and Accountability and Transparency Act, referred to as FFATA or “the Transparency Act.” It became Public Law 109-282. FFATA calls for the Office of Management and Budget to establish a single, public, free, searchable website tracking all federal grants, loans, and contracts. Even though earmarks were the catapult for FFATA, the FFATA legislation does not describe a mechanism for tracking earmarks.

The new website is up and running: www.USASpending.gov. It is a "re-launch" of the previous site, www.federalspending.gov. The data on federal contracts are drawn from the Federal Procurement Data System, and the data on federal assistance come largely from federal agencies via the Federal Assistance Award Data System.

The new regulations will require additional financial reporting of subcontract information by prime contractors. The reporting impact on universities is significant, since many of the data elements required by FFATA are not currently collected or recorded. In addition, institutions must collect and verify these data from all subrecipients, with subawards of \$25,000 or more. Effective January 5, 2008, all proposers are required to register in the CCR prior to proposal submission. Failure to complete the CCR registration process prior to proposal submission may impact the processing of the proposal.

While SIUE is already registered in the CCR, many of our subrecipients are not. The first phase of the Act is complete. Info on all prime grants and contracts the government awards is now posted on the website www.USASpending.gov. Implementation of subgrant information is still pending. There are still many unanswered questions, such as who is going to enter the subawardee data and if you change subs in the middle of the grant, how you update the system to reflect those changes. A task force is hard at work and a FR Notice on sub-awardee data is expected to be posted by the end of April 2009.

Research.gov

The National Science Foundation (NSF) has announced a new research-oriented web site called Research.gov, which seeks to improve customer service for the research community by increasing access to information and services while streamlining and standardizing business processes amongst partner agencies.

The Research.gov web portal provides a menu of services tailored to the needs of the research community. Research.gov enables institutions and grantees to access streamlined services for multiple federal agencies in one location. Research.gov currently offers the following services:

- Grants Application Status - Sponsored Projects Offices (SPOs) and Principal Investigators (PIs) can check the status of their proposals as they are received and reviewed by NSF and partner agencies and view a history of their submissions, panel summaries and reviews (PIs only), and award and/or authorization notices.
- Research Spending and Results -NSF award information available to be searched by the public in compliance with the new Federal Funding Accountability and Transparency Act requirements.
- Policy Library - An electronic library that consolidates Federal and agency-specific policies, guidelines, and procedures for use by Federal agencies and the awardee community.
- Research Headlines - News and highlighted research activities from NSF and partner agencies.
- Portal - Single-access portal for institutions and grantees to find information and conduct grants management business with Federal research grant-making agencies. Users will be shown the information and services relevant to their role. Institutions will be able to add new users and give them appropriate access.

It's Time to Mark your Calendars for the 2009 Annual Graduate School Spring Symposium



The 2009 Annual Graduate School Spring Symposium will be held on Wednesday, April 8th in the Morris University Center.

This year's Symposium will feature events such as the Graduate Student Research Symposium and Reception, the Paul Simon Outstanding Scholar Award Luncheon, Author's Display of faculty publications, the Chancellor's Researcher's Reception and other events to be announced later.

For more information about all Spring Symposium events, watch for the January-February issue of *Research Highlights* or contact Linda Skelton, extension 2958 or lskelto@siue.edu. Invitations to the Paul Simon Outstanding Scholar Award Luncheon and the Chancellor's Researcher's Reception will be mailed in March.

—Linda Skelton

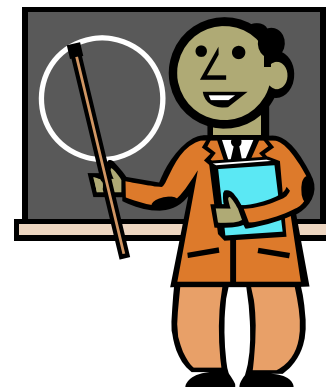
CALL FOR STUDENTS TO PRESENT AT THE 2009 GRADUATE STUDENT RESEARCH SYMPOSIUM

We encourage faculty and staff in all disciplines to invite their graduate students, and those students in the Undergraduate Research Academy, to participate in the Graduate Student Research Symposium scheduled for Wednesday, April 8, 2009 in the Morris University Center (MUC). This event allows students the opportunity to present research papers, posters, exhibits, and performances before an audience of faculty, staff, fellow students, friends and family.

Interested students are asked to submit electronically an abstract of no more than 250 words on their research or creative activities, or of a faculty mentor's research in which they are active, and a completed Information/Application sheet to the Graduate School by March 18, 2009. These abstracts will be used for planning purposes and will be included in a booklet that will be available the day of the event. **The Information/Application sheet will be available in January on our website www.siue.edu/graduate.**

Please note that PowerPoint presentations and abstracts must be sent electronically to lskelto@siue.edu no later than 4:30p.m., March 18, 2009.

Contact Linda Skelton in the Office of Research and Projects at lskelto@siue.edu or at extension



Correction



In the June edition of *Research Highlights*, Rebecca Barton of Art & Design was listed as a graduate student who won the \$200 best Visual Arts presentation at last year's Symposium. However, she was actually a graduating senior, presenting on her project for the 2007-08 Undergraduate Research Academy. Barton graduated in May 2008 with her bachelor's and is currently attending graduate school at the University of Kansas. Our apologies to Rebecca for the misprint, and we wish you good luck!



Activities from the Institute for Urban Research by Andy Theising, Director

New E-Book being Prepared for 2009

The Institute for Urban Research is partnering with FOCUS St. Louis, the regional citizens league, to publish the fourth edition of *St. Louis Currents*. *Currents* is produced about every five years by FOCUS St. Louis and is a snapshot of the St. Louis bi-state region, with a variety of authors contributing essays on key topics. The previous issue in the *Currents* series was co-produced with FOCUS and the Missouri Historical Society. I am the co-editor of the book alongside Dr. Mark Abbott from Harris-Stowe State University.

About three dozen authors will be submitting essays in eight subject areas, such as History, Infrastructure, Planning, and Decision-Making. Some participants are scholars, while others are practitioners. Each chapter will have about four essays that will provide different perspectives on a single subject area. SIUE faculty contributing essays are Nic Guehlstorf (Political Science and Environmental Sciences), Laura

Milsk Fowler (Historical Studies), and Howard Rambsy (English Language and Literature). Contributors are also coming from other area universities, including UM-St. Louis, Harris-Stowe State University, Washington University, Lindenwood University, and St. Louis University. It's a wonderfully diverse group of contributors.

This particular version of *Currents* will be centered around the 1907 City Plan for St. Louis. St. Louis' city plan was the first comprehensive urban plan in the United States. The theme of *Currents* is to examine where the entire region is now that a century of planning has taken place, and where the region is going over the next five to ten years. The original 1907 plan will be reproduced in its entirety in the new publication. The eight chapters of the original plan have been modernized and updated for modern use.

The final product, expected by June 1, 2009, will be published on DVD and sold regionally through area booksellers.



LINC Conference: Feb. 2 - 4, 2009

Mark your calendars for the biennial Leadership in Interdisciplinary Networking & Collaboration (LINC) Conference, where representatives from regional universities and federal agency program officers will discuss ways to develop collaborative projects between institutions. Sessions will be held at SIUE, Wash U, and the Cortex Building in downtown St. Louis. SIUE, WU, SLU, and UMSL are partnering to host this event. See the January edition of *Research Highlights* for more information.

Call for Research Proposals: NEH Institutes for Advanced Topics in Digital Humanities

The Institutes for Advanced Topics in the Digital Humanities program have set the deadline for the next cycle of proposals for February 18, 2009. Updated guidelines for proposals should be appearing on the NEH website in coming weeks. In the meantime, interested applicants may review existing guidelines and CRP on the website: <http://www.neh.gov/>

CRP: Congressional Research Awards

The Dirksen Congressional Center is inviting applications for grants to fund research on congressional leadership and the U.S. Congress. A total of up to \$30,000 will be available in 2009. Awards range from a few hundred dollars to \$3,500. The competition is open to individuals with a serious interest in studying Congress. Political scientists, historians, biographers, scholars of public administration or American studies, and journalists are among those eligible. The Center encourages graduate students who have successfully defended their dissertation prospectus to apply and awards a significant portion of the funds for dissertation research. Applicants must be U.S. citizens who reside in the United States.

For more information about eligibility and applications visit The Center's website: http://www.dirsencenter.org/print_grants_CRAs.htm.

Awarded Grants & Contracts: June 4, 2008—October 31, 2008

College of Arts & Sciences

Carr, TR	Public Administration & Political Analysis	\$1,200	Organization Development Research	Private
	Public Administration & Political Analysis	\$2,750	City of University City Internship	University City
	Public Administration & Political Analysis	\$4,950	University City Internship	University City
	Public Administration & Political Analysis	\$9,900	Lewis & Clark Library System Internship	Lewis & Clark Library Services
	Public Administration & Political Analysis	\$4,950	Internship at Collinsville	City of Collinsville
	Public Administration & Political Analysis	\$4,950	Internship with Madison County Planning and Development	Madison County Planning and Development
	Public Administration & Political Analysis	\$8,664	Gateway Center Internship	Gateway Center
	Public Administration & Political Analysis	\$4,026	Onlylink Internship	Onlylink
Carstens-Wickham, Susan	Foreign Lang & Lit	\$4,000	Fortbildungsseminar: Kunst im Unterricht—Using Art in the Foreign Language Classroom	Goethe Institute, Germany
Dolan, Drew	Public Administration & Political Analysis	\$37,500	Charter School Evaluation	CCI Charter School
Duvernell, David	Biological Sciences	\$6,000	Collaborative Research: Phylogeography, Ecology, and Reproductive Isolation in the <i>Fundulus Notatus</i> Complex—REU Supplementary Funding Request to Existing Grant	National Science Foundation
Esselman, Elizabeth	Biological Sciences	\$4,400	Examining Hybridization Relationships Between <i>Schoenpectus</i> Species Using ISSR Markers	U.S. Department of Interior Fish and Wildlife Service
Essner, Richard; Peter R Minchin	Biological Sciences	\$2,000	A Multivariate Habitat for the State-Threatened Cerulean Warbler and Other Neotropical Migrant Songbirds in Southwestern Illinois	Illinois Department of Natural Resources
Goebel-Parker, Elizabeth	Art and Design	\$1,675	Graduate Assistantship	Bridges Community Support Services
Hu, Shunfu	Geography	\$19,981	Orthorectification of Aerial Images from 1983 in Madison County, Illinois	Madison County

College of Arts & Sciences cont.

Hume, Susan	Geography	\$3,555	Diversifying Undergraduate Geography Education: A Student Investigation	National Council for Geographic Education
Khazeli, Sadegh; Dennis J Kitz	Chemistry	\$22,000	Increasing the Minority Scientist Pool—Illinois Louis Stokes Alliance for Minority Participation Phase III/ Yr 4	Chicago State University, National Science Foundation
Kitz, Dennis	Biological Sciences	\$5,000	Better Understanding of Eraxis Effects on Immune Response to Heart Infection	Fraternal Order of Eagles
Klorer, Patricia Ann	Art and Design	\$5,024	Collinsville Unit 10 School District - Graduate Assistantship	Collinsville Unit 10
	Art and Design	\$5,025	Belleville Area Special Services Cooperative—Graduate Assistantship	Belleville Area Special Services Corp.
Leibl, Faith	Biological Sciences	\$214,500	Investigating the Role of ATG1 in the Regulation of Glutamate Receptors	National Institutes of Health/ NINDS
McCracken, Vance	Biological Sciences	\$50,623	Effects of Hyperimmunized Egg Product in Mouse Immune Function	Private
Oberweis, Trisha; Matthew Petrocelli	Sociology, Criminal Justice	\$2,500	Policing Gangs, Continued	American Justice Institute
Pearson, Randall S.	Geography	\$115,682	Subsidence Monitoring Response Team	Department of Natural Resources, Office of Mines and Minerals
	Geography	\$2,000	Subsidence Service Agreement	Illinois Department of Natural Resources
Pryor, Caroline; Susan Breck	Curriculum & Instr.	\$6,476	Landmarks of American History and Culture: Workshops for School Teachers	National Endowment for the Humanities
Sabby, Jeffrey	Physics	\$10,000	SIUE Automated Observatory	Illinois Space Grant Consortium
Schulz, Kurt	Biological Sciences	\$1,860	Comparison of Shrub Honeysuckle Eradication Techniques for Private Landowners	Illinois Department of Natural Resources
Shaw, Michael; Eric John Voss; Paul Edward Wanda	Chemistry	\$173,865	MRI: Acquisition of an EPR Spectrometer for Teaching and Research	National Science Foundation
Shaw, Michael	Chemistry	\$500	Magnesium Cells	Private
Tamari, Stephen	Historical Studies	\$55,735	Bilad al-Shamism: The Politics of Identity in Early Modern Syria	Fulbright Scholar Program
Thomas, Reginald; Rick Haydon	Music	\$4,500	Band Director Academy-Rhythm Section Techniques	Jazz at Lincoln Center
Vogrin, Valerie	English Lang & Lit	\$1,000	Murray, Swimming Literary Award	Illinois Arts Council

Library & Information Services

Carlisle, Linda	Library & Information Services	\$2,815	Sustaining a Green Future (Environmental Policy and Politics)	Consortium of Academic and Research Libraries in Illinois
Dickman, Therese	Library & Information Services	\$2,000	Greening the Arts and Humanities: Book Arts	Consortium of Academic and Research Libraries in Illinois
	Library & Information Services	\$9,080	Louis Sullivan Architectural Ornaments in Illinois	Consortium of Academic and Research Libraries in Illinois
Kerico, Juliet	Library & Information Services	\$2,000	Green Construction and Engineering Project	Consortium of Academic and Research Libraries in Illinois

School of Education

Bergstrom, Melissa; Michael McCollum	Special Ed & Comm Dsord	\$455,000	Reforming Educational Systems to Support Early Intervening Services and Response to Intervention	Illinois State Board of Education
Gibson, Bevan D	Southern Illinois Professional Development Center	\$347,972	Southern Illinois Professional Development Center (SIPDC)	Illinois Community College Board
Jewell, Jeremy; Stephen Hupp; Michael Dudly	Psychology	\$18,430	2008 Illinois Youth Mentoring Program	Children's Home and Aid Society of Illinois
	Psychology	\$12,320	Illinois Youth Mentoring Program	Children's Home and Aid Society of Illinois (CHASI)
Kirk, Erik	Kinesiology & Health Ed	\$102,086	Exercise Dose and Nonalcoholic Fatty Liver Disease	National Institutes of Health
Krohn, Emily	Psychology	\$3,695	School Psychology Graduate Assistantship	Triad Community Unit School District #2
Pryor, Caroline	Curriculum & Instr	\$151,137	Abraham Lincoln and the Forging of Modern America	National Endowment for the Humanities
Wilkinson, Amy	School of Education	\$191,000	Teaching with Primary Sources	Library of Congress

Illinois Education Research Council

Klostermann, Brenda K.	II Education Research Council	\$17,903	Teacher induction in the Midwest: Phase II	SRI International/ The JOYCE Foundation
	II Education Research Council	\$50,000	Examining the Chicago Early Childhood Teacher Preparation Pipeline	The JOYCE Foundation

School of Business

Hafer, Rik W; David Ault	Economics & Finance	\$29,500	Index of Need FY 09	Illinois Community College Board
Kutan, Ali Mustafa	Economics & Finance	\$12,600	The Bank of Edwardsville Graduate Internship	Private
	Economics & Finance	\$7,200	The Impact of the High Oil Price on U.S. Trade and Economy	Private
Mister, Kwa	Center for Adv Mgmt & Prod	\$400,000	Highway Construction Preparation Training Program	Illinois Department of Transportation
Pettit, Mary Anne	Office of Economic Edu- cation & Business Re- search	\$3,600	Virtual Economics Training	Illinois Council on Economic Education
Segal, Madhav Nath	Management & Marketing	\$13,750	MMR-MJG Internship	Private
		\$13,750	MMR-MR Internship II	Private
		\$13,750	MMR-MR Internship III	Private
		\$13,750	MMR-FRI Internship II	Private
		\$13,750	MMR-CB Internship	Private
		\$13,750	MMR-FRI Internship	Private
		\$13,750	MMR-RPG Internship	Private
		\$4,010	MMR-MR Internship IV	Private
		\$13,750	MMR - RC Internship	Private

Academic Affairs

Berry, Sharon Lee	Student Financial Aid	\$4,049,202	Federal Pell Grant Program	U.S. Department of Education
-------------------	-----------------------	-------------	----------------------------	---------------------------------

Student Affairs

Dabbs-Kayser, Rebecca	Early Childhood Center	\$48,000	Early Childhood Block Grant—Early Learning Partners	Edwardsville Community School District
Kutterer-Siburt, Suzanne	Kimmel Leadership Center	\$1000	Carter Academic Service Entrepreneur Grant for Students	Illinois Campus Compact
	Kimmel Leadership Center	\$20,000	M3C Regional Fellows	Wisconsin
	Kimmel Leadership Center	\$32,000	SIUE M3C Americorps	Wisconsin Campus Compact
Roundcount, Tina	Health Services	\$500	Non-Promotional Medical Education Grant	Warner Chilcott

School of Engineering

Bouvier, Dennis	Computer Science	\$25,626	Commonsense Computing: What Students Know Before We Teach Them	National Science Foundation
Hubbard, Kevin M.	Mechanical & Industrial Engineering	\$13,191	Development of a Magneto-Rheologic Fluid-Based Vibration Damping System for Use in Bar Feeding Mechanisms	Private
		\$158,527	Continuing Funding for an Economic Development Administration University Center at Southern Illinois University Edwardsville	U.S. Department of Commerce and Economic Development Administration
		\$4,425	Development of a Clamping Device for Restraint Chains	Private
		\$4,386	Development of an Alternate Counter Rotating Gang-Style Magnetic Media Shredding Device	Private
		\$9,059	Automation of an Air Filter Testing Rig	Private
		\$3,780	Development of a Combined Liquid Dispensing Brush and Bottle Cap	Private
		\$1,876	Development of an Orthotic Device	Private
Luo, Albert Chao-Jun	Mechanical & Industrial Engineering	\$60,000	Dynamical and Fatigue Characteristics of Train Elements	Private
Morgan, Susan M.	Civil Engineering	\$600,000	Creating Educational Opportunities Through Partnerships	National Science Foundation
Shetley, Paul W.	Environmental Resources Training Center	\$119,125	Emergency Response & Vulnerability Assessment Training	Illinois Environmental Protection Agency
Slattery, Diane Kay	Construction	\$74,246	Evaluation of a 3-D Laser Scanning for Construction Applications	Illinois Center for Transportation
Youn, Luis Tai Oh	Electrical Engineering	\$50,000	Real-Time Automatic Validation of Excitation System	Private
Zhou, Jianpeng	Civil Engineering	\$5,500	Survey and Analysis of Industrial Water Demand and Supply at the Tri-City Port District	National Great Rivers Research and Education Center
	Civil Engineering	\$4,500	City of St. Louis Low Impact Development Alley Pilot Study - Phase 1	Private

University Services to East St. Louis

Gresham, Dawanda	University Services to East St. Louis	\$25,120	Summer Food Service Program	Illinois State Board of Education
	University Services to East St. Louis	\$50,470	National School Lunch Program FY 08/09	
	University Services to East St. Louis	\$476,500	Child & Adult Care Food Program FY 08/09	
Jamison, Theodore	University Services to East St. Louis	\$7,500	Summer Youth Arts Program-CDBG	Community Development Block Grant
	University Services to East St. Louis	\$7,500	CDBG Summer Arts 08	
Mason, Angela	University Services to East St. Louis	\$305,552	Upward Bound - BEV FY09	U.S. Dept. of Education
McIntosh, Elka Harris	University Services to East St. Louis	\$263,415	Upward Bound Math and Science FY09	
Neal, Anthony	University Services to East St. Louis	\$663,685	SIUE East St. Louis Charter School FY 08/09	Illinois State Board of Education
Owens, Lelo	University Services to East St. Louis	\$257,769	Talent Search FY 09	U.S. Dept. of Education
Raqib, Muhammad	University Services to East St. Louis	\$226,600	Talent Search- CM FY 08-09	
Sams, Barbara	University Services to East St. Louis	\$565,548	Upward Bound - EC FY09	
Strode, Marlana	University Services to East St. Louis	\$133,455	Educational Opportunity Centers FY08/09	Higher Education Consortium
Turley, Janina	University Services to East St. Louis	\$190,373	Project Success FY 08-09	Illinois Dept. of Children & Family Services

School of Nursing

Boyd, Mary Ann	School of Nursing (Central)	\$19,380	A Nurse Managed Clinic in Rural Illinois	Lewis & Clark Community College
		\$19,380	A Nurse Managed Clinic in Rural Illinois	Lewis & Clark Community College
Clement, Jacquelyn	School of Nursing (Central)	\$25,600	Nurse Anesthesia Traineeship Grant	Department of Health & Human Services (HRSA)
		\$61,950	Advanced Education Nursing Traineeship Grant	Department of Health & Human Services (HRSA)
Gaehle, Kay; Rita Arras; Roger Boyd	Primary Care/ Health-Sys. Nursing	\$1,250	St. Clair Count Collaborative Alliance for Prostate Cancer Detection Program	East Side Health District
Harrison, Roberta		\$15,500	Collaborative Service Agreement Between SIUE SON and Anderson Hospital	Anderson Hospital
Yakimo, Richard		\$15,500	Collaborative Service Agreement	Memorial Protestant Hospital
Yancey, Valerie		\$27,250	Collaborative Service Agreement	Alton Memorial Hospital

School of Pharmacy

Crider, Michael	School of Pharmacy	\$5,000	Synthesis of Nonpeptide Ureas and Thioureas as Selective Subtype 4 Receptor Somatostatin Agonists	American Foundation for Pharmaceutical Education
Herndon, Christopher		\$57,314	National Pain and Pharmacy Consensus Project	May Day Foundation of New York
Witt, Ken		\$125,000	Somatostatin Agonist Treatment for Cognitive Aging and Dementia	Institute for the Study of Aging

School of Dental Medicine

Gillepsie, M. Jane	School of Dental Medicine	\$14,668	Retention of Antimicrobial Activity of Peptide-Coated Obturator in an Endodontically-Prepared Tooth Model Against Enterococcus Faecalis	Private
Otsuka, Allen Shigeo		\$1,000	Effect of Xylitol on Sugar Transport Differences Between Various Strains of S. Mutans	Odontographic Society of Chicago

National Corn to Ethanol Research Center

Caupert, John Jr.	National Corn to Ethanol Research Center	\$180,000	NCERC Pilot Plant Services-Private Agreements	Private
		\$6,161	NCERC Fermentation Lab Services-Private Agreements	
		\$3,660	NCERC Workforce Training-Private Agreements	
		\$328,140	ARS/Ethanol Research Agreement- USDA-CFDA	USDA - Agriculture Research Service
		\$10,411	NCERC Pilot Plant Services-Private Agreements	Private
		\$50,000	NCERC Pilot Plant Services-Private Agreements	
		\$140,000	NCERC Pilot Plant Services-Private Agreements	
		\$9,350	NCERC Fermentation Lab Services-Private Agreements	
		\$3,120	NCERC Workforce Training-Private Agreements	
		\$5,850	NCERC Workforce Training-Private Agreements	
		\$2,500	NCERC Workforce Training-Private Agreements	
		\$120,000	NCERC Pilot Plant Services-Private Agreements	
		\$100	NCERC Pilot Plant Services-Private Agreements	
		\$110,000	NCERC Pilot Plant Services-Private Agreements	
		\$9,750	NCERC Workforce Training-Private Agreements	
Wrenn, Brian		\$3,000,000	Capital Funds for NCERC	Illinois Department of Commerce and Economic Opportunity
		\$1,000,000	Operating Funds for NCERC	Illinois Dept. of Commerce and Economic Opportunity
		\$50,000	Enhanced Efficiency of Starch Extraction and Hydrolysis by Electroporation	Illinois Corn Marketing Board
Zhang, Yan-hong		\$62,857	Sulfur Concentration in Distiller's Grains with Soluble (DDGS) and its Impact on Palatability and Pig Performance	National Pork Board
		\$16,974	Assessment of an In Vitro Procedure to Measure Amino Acid Digestibility in DDGS Fed to Pigs	University of Illinois/ Illinois Corn Marketing Board
		\$12,500	DDGS Quality Assessment & Quality Control - Mycotoxin Review	U.S. Grains Council

Submitted Grants & Contracts: June 4, 2008—October 31, 2008

College of Arts & Sciences

Abusharbain, Elaine	Biological Sciences	\$1,500	Field Trip Support for the Upper Mississippi River Curriculum	Melinda Gray Ardia Environmental Foundation
Anderson, Todd	Art & Design	\$7,000	Artist Fellowship Program	Illinois Arts Council
Blad, Cory	Sociology & Criminal Justice Studies	\$5,266	Building New State Forms in the Era of Globalization: Sub-State Autonomy Strategies in Alberta	Canadian Embassy Research Grant Program
Brown, Venessa Lawrence, Shonda	Social Work	\$125,874	Southern Region Permanency Enhancement Project	Illinois Department of Children and Family Services
Brugam, Richard	Biological Sciences	\$500	Lake Education Assistance Program Grant	Illinois Environmental Protection Agency
Gay, Pamela	Physics	\$543,924	The Universal Zoo: Citizen Science From the Moon to the Early Universe	NASA
Gay, Pamela	Physics	\$12,028	A Web-Based Comic Book: Hanny and the Mystery of the Voorwerp	University of Alabama
Gay, Pamela	Physics	\$277,856	Astronomy Cast Live: Bring Science to the People in Real Time	National Science Foundation
Hildebrandt, Kristine	English Languages & Literature	\$6,000	Exploring Deep-Level Contact Effects in Phonology	National Endowment for the Humanities
Luesse, Darron	Biological Sciences	\$64,447	The GPS Mutants: Discovering How Plants Establish Asymmetry in Response to Gravity	Ohio State University / NASA
Matejka, Adrian	English Language & Literature	\$7,000	The Big Smoke: Jack Johnson Tells It	Illinois Arts Council
Murphy, Patrick	Mass Communication	\$59,185	Media, Globalization and the Politics of the Earth	Fulbright - CIES
Patrick, Timothy	Chemistry	\$220,399	New Fluorine-containing Intermediates	National Science Foundation
Sewell, Edward	Mathematics & Statistics	\$80,612	Collaborative Research: Shifting Paradigms: Causal Inference via Subset Selection	National Science Foundation
Shaw, Michael	Chemistry	\$60,000	Organometallic Routes to Improved Surface-bound Electroluminescent Polymers	Dreyfus Foundation
Shaw, Michael Noble, Bradley	Chemistry Electrical & Computer Engineering	\$382,289	RUI: Synthetic Methods to Improve Poly(Phenylene)ethynylene Films	National Science Foundation

College of Arts & Sciences - cont.

Simms, Douglas	Foreign Language & Literature	\$800	Old English Sigel 'Sun, Name of Sun Rune' - Its Use, Spelling, and Etymology	Newberry Library
Stacy, Jason	Historical Studies	\$6,000	Leaves of Grass 1860, The 150th Anniversary Edition	National Endowment for the Humanities
Theodorakis, Christopher	Biological Sciences	\$388,666	Recent & Historical Metapopulation and Landscape Genetics in Endangered Gopher Turtles From Southern Mississippi	National Science Foundation
Theodorakis, Christopher	Biological Sciences	\$431,819	Proteomic Analysis of Thyroid Modulations & Thyroid-Mediated Oxidative Stress in Zebrafish	National Science Foundation
Theodorakis, Christopher	Biological Sciences	\$87,776	Aquatic Toxicity & Biological Fate of Nm-Ag: Influence of Particle Size & Ionic State	Purdue University
Theodorakis, Christopher Lin, Zhi-Qing Voss, Eric	Biological Sciences Environmental Sciences Chemistry	\$584,857	Toxicity of Metal Oxide Nanoparticles in Fish and Frogs: Effects of Particle Size, Oxidation State, and Mixtures	National Science Foundation
Theodorakis, Christopher	Biological Sciences	\$215,250	Thyroidal Modulation of Arsenic-Induced Oxidative Stress in Zebrafish	National Institutes of Health
Vogrin, Valerie	English Language & Literature	\$4,000	Fiction	The Christopher Isherwood Foundation

School of Dental Medicine

Jain, Poonam	Dental Medicine	\$47,543	Dissemination of Information on Effects of Soft Drinks on Oral Health to School Children in Madison & St. Clair Counties	Daughters of Charity Foundation
Rowland, Kevin Gautam, Medha	Dental Medicine	\$214,500	Effects of Pulp Inflammation on Cold-Sensitive Receptors in the Trigeminal System	National Institute of Dental and Craniofacial Research

School of Education

Everett, Gregory	Psychology	\$10,000	Latency to Compliance in ADHD Versus Non-ADHD Children	Spencer Foundation
Liu, Yuliang Voepel, Tammy Thomeczek, Melissa Jewell, Jeremy O'Donnell, Barbara	Educational Leadership Mathematics & Statistics Educational Leadership Psychology Curriculum & Instruction	\$1,398,438	No Child Left Behind in Elementary Mathematics	U.S. Department of Education
Liu, Yuliang Voepel, Tammy Thomeczek, Melissa Jewell, Jeremy O'Donnell, Barbara	Educational Leadership Mathematics & Statistics Educational Leadership Psychology Curriculum & Instruction	\$1,398,438	Accelerating Mathematical Development via Multimedia Learning in Academically Disadvantaged Elementary Population	U.S. Department of Education

School of Engineering

Fries, Ryan	Civil Engineering	\$49,986	ITE-2008-09: Manual of Transportation Engineering Studies	Institute of Transportation Engineers (ITE)
Fries, Ryan	Civil Engineering	\$299,928	Guidelines for Timing Yellow & All-Red Intervals at Signalized Intersections	National Cooperative Highway Research Program
LeAnder, Robert	Electrical Engineering	\$568,839	Development of Computer Vision Algorithms for Automatic Detection of Diabetes Retinopathy	Department of Defense
LeAnder, Robert Umbaugh, Scott	Electrical Engineering Electrical & Computer Engineering	\$91,827	Development of an Algorithm Permutation Program for the Automatic Generation of New Diabetic-Retinopathy-Detection Algorithms	The International Retinal Research Foundation
Shang, Ying	Electrical Engineering	\$409,946	A New System Theory for Networked Control Systems with Applications in Electric Power Systems	National Science Foundation
Slattery, Diane Kay Zhou, Jianpeng	Construction Civil Engineering	\$336,155	Storm Water Pollution and Erosion and Sediment Control Products Demonstration and Training Center	Illinois Center for Transportation
Slattery, Kerry Gordon, Chris	Construction	\$43,379	Create a Building Information Curriculum	Associated General Contractors of America
Weinberg, Jerry	Computer Science	\$150,000	SBIR/STTR Phase II: General Robot Controller for Legged Mobile Robots with Integrated Open Source Software	National Science Foundation

School of Engineering cont.

Zhou, Huaguo	Civil Engineering	\$187,381	Developing Tools to Evaluate Roadway Lighting Levels for State and Local Agencies	Illinois Center for Transportation
Zhou, Jianpeng	Civil Engineering	\$105,383	Reusing Treated Wastewater to Meet Water Demands of Corn-to-Ethanol Plants	Illinois Waste Management

School of Nursing

Bernaix, Laura	Family Health/ Community Health Nursing	\$345,927	Feasibility of a Paternal Breastfeeding Educational Program for Hospitalized Preterm Infants	National Institutes of Health
Clement, Jacquelyn	Nursing		Advanced Education Nursing Traineeship (AENT)	Health Resources & Services Administration (HRSA)
Comrie, Rhonda	Primary Care/Health System Nursing	\$19,000	Regional Asthma Collaborative Implementation of Evidence-based Programs	Illinois Department of Public Health
Flick, Louise	Family Health/ Community Health Nursing	\$1,539,080	National Children's Study Jefferson County Location	St. Louis University (NICHD)

School of Pharmacy

Kwon, Guim	Pharmacy	\$214,500	Mechanisms Involved in Ectopic Lipid Accumulation and Lipolysis in Pancreatic b-Cells	National Institutes of Health (NIGMS)
Kwon, Guim	Pharmacy	\$393,249	Effects of Adiponectin on Pancreatic b-Cell Growth & Proliferation	National Institutes of Health
Kwon, Guim	Pharmacy	\$60,000	Adiponectin, a Potential New Drug for Obesity-Mediated Type-2 Diabetes	Pharmaceutical Research & Manufacturers of America Foundation
Witt, Ken	Pharmacy	\$393,250	Novel Somatostatin Agonists for the Treatment of Pain	National Institute of Arthritis & Musculoskeletal & Skin Diseases (NIAMS)
Witt, Ken	Pharmacy	\$1,430,000	Estrogenic Modulation of the Blood-Brain Barrier: Age & Ischemic Stress Impact	National Institutes of Health

Academic Affairs

Berry, Sharon Lee	Student Financial Aid	\$444,000	TANF/Low Income Scholarship Program	Illinois Department of Human Services
-------------------	-----------------------	-----------	-------------------------------------	---------------------------------------

Student Affairs

Dabbs-Kayser, Rebecca	Early Childhood Center	\$9,500	Nature Explore Classroom Demonstration Site	The Arbor Day Foundation/ Dimensions Education Research Foundation
-----------------------	------------------------	---------	---	---

Directory of Staff

Steve Hansen, Associate Provost for Research and Dean, Graduate School
shansen@siue.edu extension 3018

Ron Schaefer, Associate Dean, Graduate School
rschaefer@siue.edu extension 5264

Christa Johnson, Associate Dean, Graduate School
cjohnna@siue.edu extension 2171

Jo Barnes, Director, ORP
jbarnes@siue.edu extension 5199

David Bray, Senior Grants Accountant, ORP
dbray@siue.edu extension 3693

Patience Graybill Condellone, Research Assistant, ORP
pgraybi@siue.edu extension 5618

Teri Gullede, Research Administrator, ORP
tgulled@siue.edu extension 3114

Cindy Fulton, Grants and Contracts Administrator, Graduate School
cfulton@siue.edu extensions 3164 and 3010

Chris Kessler, Administrative Secretary, Graduate School
ckessle@siue.edu extension 3117

Gail Munneke, Grants Accountant, ORP
gmunnek@siue.edu extension 3162

Shelly Robinson, Graduate Recruitment Coordinator
michero@siue.edu extension 2811

Trisha Simmons, Grants Accountant, ORP
tsimmon@siue.edu extension 3008

Linda Skelton, Research Administrator/Ethical Compliance, ORP
lskelto@siue.edu extension 2958

Tammy Smart, Chief Clerk, ORP
thornbe@siue.edu extension 5364

