



- ▶ HERI SURVEY RESULTS2
- ▶ 2009 DISTINGUISHED RESEARCH PROFESSORS .3
- ▶ INFORMATION ON '09 SPRING SYMPOSIUM4
- ▶ RESEARCH GRANTS FOR GRAD STUDENTS6
- ▶ IURC REPORTS.....7
- ▶ LINC CONFERENCE REPORT8
- ▶ NEA AND STIMULUS9
- ▶ CHECK OUT THE AWARDED & SUBMITTED GRANTS AND CONTRACTS..... 12



Office of Research and Projects

Research Highlights

KEEPING YOU UP TO DATE ON THE LATEST RESEARCH NEWS AT SIUE

Kauzlarich Named 2009 Paul Simon Outstanding Teacher-Scholar

The Graduate School is proud to announce Dr. David Kauzlarich as the 2009 Paul Simon Outstanding Teacher-Scholar. Sponsored by the Graduate School and granted by the SIUE Graduate Faculty, the Paul Simon Award recognizes the role of research and creative activities in achieving excellence in teaching. The Simon Award confirms SIUE's belief that an individual must be a good scholar to be a good teacher. Dr. Kauzlarich's career not only represents the fruits of diligent scholarly work, it demonstrates the importance of research in sustaining an informed, well-connected, and inspiring teaching model.

David Kauzlarich is Professor and Chair of the Sociology and Criminal Justice department at SIUE. He considers active research, theorizing, and the subsequent dissemination of one's scholarly work as critical tenants of engaged, vibrant teaching. He believes that when professors embed themselves within and contribute to the scholarly fields in which they teach, students can see the topics in real time, better detect the substantive evolution of the field, and potentially feel more connected with their areas of study.

Dr. Kauzlarich uses his published books and articles as classroom reading materials; co-authors publications and presenta-



cont. p. 11...

Stimulus Package: Impact on Scientific Research and Higher Education

Many of us have been wondering about how the stimulus package, or the "American Recovery and Reinvestment Act (ARRA)," will affect current and future research at our institution. In an attempt to help the research community make sense of the ARRA, groups such as the Council on Government Relations (COGR) and the Council on Undergraduate Research (CUR) recently pub-

lished summary results of the total spending appropriated to each government agency. In addition, preliminary statements about how they expect to distribute their part of the stimulus have begun appearing on agency websites.

Some general points can be made about the news so far: (1) many agencies will draw from their existing pool of recently reviewed proposals to make awards

cont. p. 9...

Mark Calendars for the 2009 Spring Symposium: April 8th

See p. 4



Featured External Awards

Pamela Gav, Physics:

NASA: "The Universal Zoo: Citizen Science from the Moon to the Early Universe"

Dennis Bouvier, Computer Science:

NSF: Collaborative Research: A Network of Disciplinary Commons in Computing Education

Upcoming Internal Competition Deadline: Monday, March 31: New Investigator Award

For more information on internal competitions please visit www.siu.edu/graduate.

HERI Survey: Research has rising importance for SIUE faculty

Research at SIUE has gained increasing significance in the faculty conceptions of their jobs, says a recent national survey. Conducted every three years by UCLA researchers, the Higher Education Research Institute (HERI) survey tracks faculty attitudes at undergraduate institutions. Faculty members are questioned on a range of topics, including perceptions of their respective institutions, work load, students, teaching, and the nature of the profession.

SIUE has participated in the survey since 1989. Read for its cumulative results, the HERI offers a long-range view of faculty attitudinal responses over time. It also enables a comparison between SIUE's institutional statistics and national averages. Outcomes of the 2007 survey have recently been published alongside past responses. Of particular interest are questions related to faculty research and teaching.

When questioned about the issues believed to be of "high or highest priority at the institution," 86% of SIUE respondents rated the "promotion of intellectual development" among the highest priorities. While teaching and cultivation of student development remain clear faculty priorities, other pressures to elevate institutional status appear. The need to "enhance the institution's national image" and "increase/maintain institutional prestige" rate number two and three in importance with 78% and 70.6% of respondent support. These issues showed a significant increase of at least 10 percent since 2004. Number four in this series was the need "to pursue extramural funding," rated at 68.8 %, compared to 2004's 60.1%. Fifth in highest priorities appeared the need "to create and sustain partnerships with surrounding communities" at 60.2%, up from 56.1% in 2004.

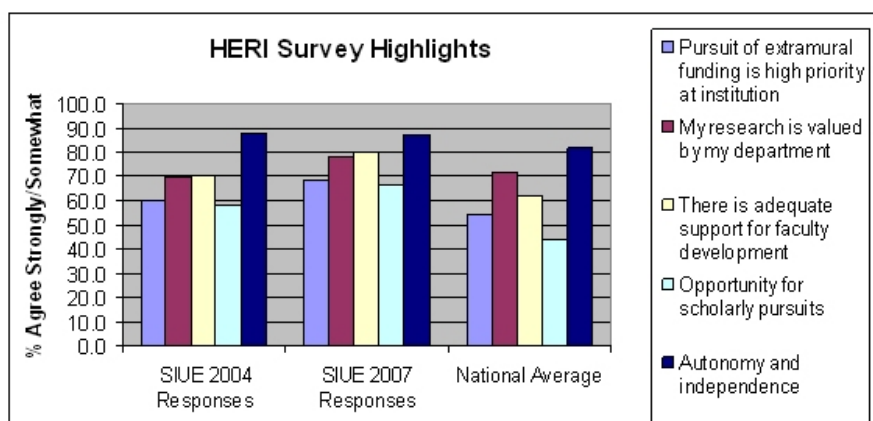
These numbers indicate the continued importance of teaching as a main priority at the institution, while also showing the faculty perception that individual research, collaborative projects, and communal engagement remain vital elements of the job. Furthermore, extramural research has become a key portion of the job, gaining an almost 9% increase in attitudinal importance in the last three years, while rising 14 points above 2007's national average response.

The rise in research's role in SIUE faculty perceptions might be traced to various sources. One might track it to the influx of new faculty anxious for tenure or to a general increase in university expectations for research. Regardless, the hike in fac-

ulty perceptions regarding research reflects the "Teacher-Scholar" philosophy at SIUE. The 2007 publication of the Teacher-Scholar Model articulated the importance of research as a means to enhance teaching and gave definition to the terms "research and creative activities." Whether faculty felt that the Teacher-Scholar model articulated an existing ideal or created a new one, it seems that the definition of the Teacher-Scholar ideal corresponded to a rise in faculty perception that scholarship, teaching, and service were equally important to the academic quality of SIUE.

Survey results indicate that SIUE faculty sense pressure to maintain institutional prestige and increase extramural research. Yet, do they feel supported in their efforts to do so? HERI survey results show that 78% of SIUE respondents agreed that their research was valued by their departments, which compares to the 71.6% national average. Approximately 67 percent of SIUE faculty felt that they had satisfactory or very satisfactory opportunities for scholarly pursuits—a response that may seem tepid until compared to the 44 % national average of positive answers. Sixty-four percent felt their teaching load was satisfactory, compared to a forty-seven percent national average. Over 90 percent of SIUE faculty respondents felt supported in their teaching by their departments. Further results show that the SIUE faculty feel supported in efforts for professional development and have relatively strong relationships with administrators. Other high performers in this survey included respect for the competency of colleagues (78.

5%); satisfactory autonomy and independence (87.5%); and positive professional relationships with other faculty (84.9%). Low performers in the areas of institutional support included availability of child care and salary support, while health benefits and the freedom to determine course content also rated



among the highest.

The HERI serves university administrators as a divining rod for the attitudes of faculty enacting university policies and practices. A look to the way faculty perceptions regarding scholarship, teaching, and service change over time offers insight into past institutional transformations in the past as well as potential future trends.

—Patience Graybill Condellone

Announcing the 2009 Distinguished Research Professors



Margaret (Peg) Simons, Distinguished Research Professor of Philosophy

Professor Margaret (Peg) Simons has sustained an extraordinary record of research activities since her promotion to professor in 1990 and brings national and international recognition to her department. Since her promotion, Peg has maintained the highest level of professional development and has steadfastly pursued her scholarly research independently and through internally and externally funded projects, including two from the prestigious National Endowment for the Humanities. She has won acclaim as one of the most important scholars writing about the philosophy and life of Simone de Beauvoir. Since 1990 she has given fifteen international, thirty-five national, ten regional, and eight local presentations. Her dossier clearly demonstrates that her research and publications have had a tremendous impact on the field, her students, and the public.



External reviewers of Professor Simons' credentials provided unequivocal strong evidence of the high quality of her work. These reviewers stated that "Beauvoir scholarship in the United States owes more to Peg Simons than to any other individual." Carlin Romano, writing in *The Philadelphia Inquirer*, refers to Professor Simons as "America's leading Beauvoir scholar." Many of these reviewers say she

is a "pioneer ... to whose writings over the past 20 years all philosophers taking part in the current [Beauvoir] renaissance are deeply indebted." Her work is called "pathbreaking" and "fundamental" in Feminist Studies, a highly respected interdisciplinary journal in the broad areas of theory, philosophy, culture, history and literature. Several external reviewers noted that Professor Simons shows no sign of slowing down, continuing to publish, most recently a 2008 article appearing in France and a 2009 book publication, her edition of Beauvoir's *Wartime Diary*.

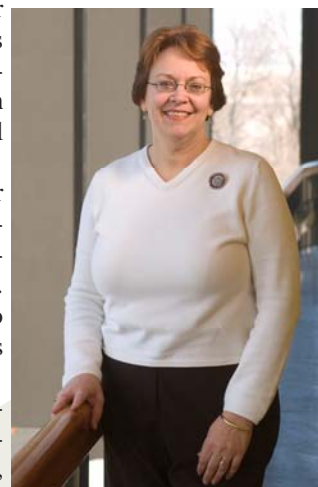
Dr. Simons' continuing enthusiastic commitment to her research on Beauvoir's philosophy promises to continue to bring advances in knowledge within the discipline of philosophy and international recognition for SIUE. Please join us in congratulating her on this prestigious award.

Leah O'Brien, Distinguished Research Professor of Chemistry

Dr. Leah O'Brien was promoted to professor in 2001 and has brought broad acclaim to her department. Like Prof. Simons, Prof. O'Brien has pursued her independent research activities through both internally and externally funded projects that have earned her national and international recognition. She has received research funding from two of the most prestigious research agencies in the field of Chemistry: the National Science Foundation and the American Chemical Society.

Dr. O'Brien is highly respected in the international field of gas-phase spectroscopy and her work has relevance to many broader areas of science. She regularly publishes in mainstream international journals, where it is also regularly cited. Since 2001 she has published 15 articles, all in pre-eminent journals in her field, and presented at the most prestigious conference in all of Chemistry. Her expertise in chemistry and science in general has been requested to review articles submitted to the *Journal of Molecular Spectroscopy*, the *Journal of Physical Chemistry*, and to review proposals submitted to the National Science Foundation.

Leah's dossier clearly demonstrates that her research and publications have had a tremendous impact on the field, her students, and the public. External reviewers of Professor O'Brien's credentials provided unequivocal strong evidence of the high quality of her work. One reviewer stated, for example, that "she has become one of the leading experts in the spectroscopy of small metal containing molecules and has made many important contributions to the field. She has maintained a steady and consistently high level of quality research and is widely known and respected in the international spectroscopy community." Another review stated that "her research is on the cutting edge of her profession." Noting the exceptionally outstanding NSF panel reviews of her proposals, another reviewer stated: "this level of commendation is the highest praise a scientist in this country can hope to achieve." Congratulations to Dr. O'Brien on this tremendous achievement.



Call for Students to Present at the Graduate Student Research Symposium

We encourage faculty and staff in all disciplines to invite their graduate students, and those students in the Undergraduate Research and Creative Activities (URCA) Program, to participate in the Graduate Student Research Symposium scheduled for Wednesday, April 8, 2009 from 1:30 – 3:30 in the Morris University Center (MUC). This event, which is part of “Celebrating Academic Achievement at SIUE” and the “Graduate School Spring Symposium, allows students the opportunity to present research papers, posters, exhibits, and performances before an audience of faculty, staff, fellow students, friends and family.

Interested students are asked to submit electronically an abstract of no more than 250 words on their research or creative activities, or of a faculty mentor’s research in which they are active, and a completed Information/Application sheet to the Graduate School by March 25, 2009. These abstracts will be used for planning purposes and will be included in a booklet that will be available the day of the event.

The Information/Application sheet is available on our website www.siu.edu/graduate.

A reception honoring the presenters will be held immediately following the Symposium at 3:30. Presenters are encouraged to invite faculty, staff, friends and family to the reception.

Please note that PowerPoint presentations and abstracts must be sent electronically to lskelto@siue.edu by no later than 4:30p.m., March 25, 2009.

Contact Linda Skelton in the Office of Research and Projects at lskelto@siue.edu or at extension 2958 for more information.



The Graduate School Presents the 13th Annual Spring Symposium— Wednesday, April 8th



Jerry Pogatshnik

The 2009 Annual Graduate School Spring Symposium scheduled for Wednesday, April 8th.

Dr. Gerald Pogatshnik, Dean of the Graduate School and Associate Vice President for Research at Eastern Kentucky University, former SIUE Professor and Associate Dean of the Graduate School, will present a workshop on research in the morning. Scholarly and creative publications by SIUE Faculty will be on display during the Symposium. University Archivist and Special Collections Librarian, Stephen Kerber, and Archives Specialist, Amanda Bahr-Evola, will be on-hand to answer questions about the collection. Bibliographies of the works on display will be available. For information on having your works displayed and donating them to University Archives, please contact Stephen Kerber at skerber@siue.edu or Amanda Bahr-Evola at abahr@siue.edu. Deadline for submission of items for this year’s Author’s Display is March 16th.

The Paul Simon Outstanding Scholar Award Luncheon will feature a presentation by Albert Luo, Professor in the Department of Mechanical and Industrial Engineering and recipient of the 2008 Paul Simon Outstanding Scholar Award. The 2009 award recipient will be announced at the luncheon.

The Graduate Student Research Symposium will be held in the afternoon from 1:30 – 3:30 featuring paper presentations and poster exhibits by graduate students and students in the Undergraduate

Research and Creative Activities (URCA) Program. A reception will be held following the Symposium to acknowledge the presenters. Refreshments will be available throughout the afternoon presentations and at the reception. This event is open to the public and instructors are welcome to bring their classes. The Graduate School will offer a prize drawing for those who attend one or more student presentation during the Student Symposium. Winner of the drawing will be announced at the reception following the Symposium.

The Chancellor’s Researchers Reception, honoring faculty and staff who submitted external grants from March 1, 2008 through February 28, 2009, will begin at 4:30 p.m.

Invitations to the Paul Simon Outstanding Scholar Award Luncheon and the Chancellor’s Researchers Reception will be mailed in March.

For more information about Spring Symposium events, contact Linda Skelton, extension 2958 or lskelto@siue.edu.

—Linda Skelton



Celebrating Academic Achievement at SIUE

*Mark Your Calendars for
Two Upcoming Student Events*

Wednesday
April 8, 2009

er



Tuesday
April 21, 2009

er

GRADUATE STUDENT SYMPOSIUM

1:30 – 3:30 p.m.

Reception immediately following

For more information, contact
Linda Skelton

lskelto@siue.edu

SENIOR ASSIGNMENT SHOWCASE

2:00 – 4:00 p.m.

Reception immediately following

For more information, contact
Vicki Scott

viscott@siue.edu



Graduate School Announces Winners of the 2009 Research Grants for Graduate Students (RGGGS)

The recipients of The Graduate School's Spring 2009 Research Grants for Graduate Students (RGGGS) awards have been selected. The RGGGS program awards grants of up to \$500 on a competitive basis to support research initiated and conducted by classified graduate students to enhance their academic progress. The purpose of the program is to support the research of graduate students, particularly as it relates to the thesis or final project.

Proposals must be approved by the student's major advisor and are then ranked by the department. The Research and Projects Advisory Board (RPAB) of The Graduate School makes the recommendations on funding.

College of Arts and Sciences

Amanda Pfister, Art Studio: "Sharpening Raster Graphics for Large Scale Printing"

Patricia Gerstenecker, Biological Sciences: "Home Range and Movement Patterns of the Blackstripe Topminnow, *Fundulus notatus*, in Cahokia Creek"

Megan McCollum, Biological Sciences: "Studies of a Potential HMG Protein and Transcription Factor in the Signaling Pathways of *Schizophyllum Commune*"

Stephanie Meier, Biological Sciences: "Studies of Genetic Relationships and Effective Population Sizes of *Fundulus notatus* and *F. olivaceous* Populations Throughout their Geographic Ranges"

Brian Schoeneck, Biological Sciences: "Role of Visual Cues in Mate Preference for Two Species of Closely Related Topminnows"

Amanda Willis, Biological Sciences: "Understanding the Effects of Rer1 on Glutamate Receptor Expression at the Drosophila Neuromuscular Junction"

Jie Hong, Environmental Sciences: "Quantification and Speciation of Selenium in Edible Mushrooms"

Taujale Saru, Environmental Sciences: "Elucidating the Effect of Nanosized Metal Oxides on the Oxidation of Triclosan by Manganese Oxide"

Jennifer Glaubius, Geography: "The Effects of Geomorphologic Processes on Artifact Distribution in Messenia, Greece"

School of Education

Leow Yoon, Electrical Engineering: "Pursuer Evader Tracking of Mobile Robots in Sensor Networks"

Sarah Brooks, Psychology: "Coping Mechanisms as Mediators of Aggression"

Stephanie Damas, Psychology: "Revictimization as a result of Risk recognition and Resistance Deficits in a Date Rape Scenario"

Chelsea Vanderpool, Psychology: "The Effects of Gender-Role Congruency of Salary Negotiation Outcomes"

The next deadline for the RGGGS competition will be early October 2009. Applications are available online at www.siu.edu/graduate/current/research.shtml.



Activities from the Institute for Urban Research by Andy Theising, Director

IUR Works with FOCUS St. Louis to Publish *St. Louis Currents*

About every five years, FOCUS St. Louis (the regional citizens' league) works with a partner to publish *St. Louis Currents*—a look at the St. Louis region's strengths and weaknesses, and an assessment of its direction. The Institute for Urban Research is pleased to be FOCUS's 2009 partner.



Howard Ramsby

The 2009 edition of *Currents* will include about 30 essays written by scholars and practitioners in eight different areas. Several faculty members from SIUE are contributing essays: **Howard Ramsby and Shelley Houk** (English Language and Literature), **Nic Guehlstorf** (Political Science and Environmental Sciences Program), **Laura Milsk Fowler** (Historical Studies), and me, **Andy Theising**.

Currents will be an e-book, initially released on DVD through regular bookstore channels, but with print-on-demand and download purchases available later in the year. **Curt Price** of ITS is working with the IUR in the production process. **Tyson Thomas**, IUR graduate assistant, is working on the technical end of the project.

One of the exciting features of the book is a complete reproduction of the 1907 St. Louis City Plan in PDF. St. Louis was the first city in the United States to develop a comprehensive city plan. The theme of *Currents* this year is to examine the region now that the region has had 100 years of planning.



Laura Milsk Fowler

The book is being co-edited by Mark Abbott of Harris-Stowe State University and me. Essays are being contributed in the areas of St. Louis regional history and culture, planning issues, leadership issues, community issues, environmental issues, infrastructure issues, social and identity issues, and implementation issues.

The e-book will be released this summer by the publisher, Reedy Press of St. Louis. More to come!

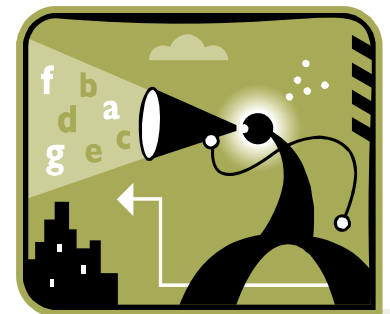
—Andy Theising

New NSF Policy Update Takes Effect April 6, 2009

Part I of the *NSF Proposal & Award Policies & Procedures Guide* (PAPP), which includes the Grant Proposal Guide has been revised to update NSF's implementation of the mentoring requirement in the America COMPETES Act. Beginning **April 6, 2009**, each proposal that requests funding to support **postdoctoral** researchers must include, as a supplementary document, a description of **mentoring activities** that will be provided for such individuals.

In no more than one page, the mentoring plan must describe the mentoring that will be provided to all postdoctoral research supported by the project, irrespective of whether they reside at the submitting organization, any subawardee organization, or at any organization participating in a simultaneously submitted collaborative project.

See the published revised version of the NSF PAPP, NSF 09-29 at http://www.nsf.gov/publications/pub_summ.jsp?ods_key=nsf0929.



LINC Conference a Success!



The Midwest Regional Outreach, Science, & Scholarship Summit: Leadership in Interdisciplinarity, Networking & Collaboration (LINC) took place on the campuses of SIUE and Washington University on February 2nd and 3rd, and in the Cortex building in downtown St. Louis on February 4th. Feedback from the conference participants and speakers has been resoundingly positive. We had 282 total registered attendees, 44 speakers, and 12 participating institutions of higher education. Featured speakers included Ryan Lewis from the Illinois Humanities Council (IHC), Tom Cooley, CFO of the National Science Foundation (NSF), and Sally Rockey, Acting Deputy Director for Extramural Research, National Institutes of Health (NIH).

In the opening plenary presentation Tom Cooley (NSF) addressed the impact of the stimulus package on federal research funding in general, and its impact on the National Science Foundation in particular. Beth Strausser covered recent NSF policy changes and expectations for future policy updates and implementation. Jim Hamos discussed priorities in the Education and Human Resources directorate of the NSF, as well as the Math and Science Partnership programs. Ryan Lewis from the Illinois Humanities Council addressed IHC programs as well as upcoming changes and funding priorities of the National Endowment for the Humanities (NEH). Additional agencies featured at the conference included NASA, NICDR, and NSF Engineering.

Plans for the 2011 conference are already underway. As in future LINC events, the goal of the conference is to continue to encourage dialogue across disciplines that do not ordinarily collaborate, in particular the humanities and sciences. As became evident throughout the LINC conference, the direction of government funding is in the area of multi-disciplinary studies as well as large collaborative project that involve diverse institutions and community partners. As Tom Cooley emphasized at the closing ceremonies, the federal agencies are eager to attend precisely this kind of regional collaborative effort, and they look forward to participation in 2011.

If you attended this year's LINC conference, please be sure to fill out the feedback survey posted on the LINC website. See the website for speaker presentations as well: <http://www.siu.edu/linc/>. Your feedback about the value and quality of the event is key to our evaluation, and integral in planning future faculty-focused events.

—Christa Johnson

Minority and Women Business Enterprise Procurements

Many grants require that we utilize Minority and Women Business Enterprises whenever possible to procure goods and services and some grants require that we report monthly and/or quarterly the MBE/WBE vendors used and/or the dollar amount expended on goods or services supplied by MBE/WBE. Some granting agencies are now requiring us to identify those vendors and also to provide a small business subcontracting plan in our proposal submissions.

To assist SIUE departments with locating diverse suppliers of purchases of goods and services the SIUE Purchasing Department has launched a new Purchasing web site: www.siu.edu/purchasing. The new site includes several source sites for diverse vendors. It is required that any requisitions that come into Purchasing over \$10,000 up to the legal bid limit, have a minimum of three quotes attached and one must be from a minority vendor. If departments aren't able to locate or get a quote from a minority vendor, they must put this in writing and attach it to the requisition.

If you have any questions about the web site or need assistance in locating diverse suppliers, they may contact either Dawn East at 3257, deast@siue.edu or Nancy Ufert at 3187, nufert@siue.edu.

—SIUE ORP/POST-AWARD SERVICES and SIUE PURCHASING DEPT

\$50 Million in Stimulus Bill for NEA

As reported in the New York Times, February 15, 2009, the stimulus bill includes a \$50 million allocation for the National Endowment for the Arts. The final bill eliminated part of the earlier Senate amendment that would have excluded museums, theaters and arts centers from any recovery money. Casinos and golf courses remain ineligible for stimulus funds, as do zoos, aquariums and swimming pools.

The annual budget for the National Endowment for the Arts was \$145 million; the extra \$50 million represents a significant boost. 40 percent of the new money is expected to be distributed by formula to state arts agencies and regional arts organizations. Individual arts projects will compete for the remaining 60 percent of the funds in NEA grants.

President Obama has not yet appointed a successor to Dana Gioia, who served as the Endowment's chairman until last month.

Please see Robin Pogrebin, "Saving Federal Arts Funds: Selling Culture as an Economic Force," NYT, Arts Section, 2/19/09.

Stimulus Bill and Research cont.

with stimulus money; (2) when RFP's for new proposals appear, they will look for "beaker-ready" projects with strong potential for success in a short period of time; (3) there are appropriations for construction and building maintenance; and (4) accountability and transparency are major requirements of the stimulus awards. The White House has established Recovery.gov in order to track the dollars spent in different agencies as well as the quantitative results of projects funded. NIH and other agencies will provide information through Research.gov.

Following are highlights from the stimulus package, abbreviated from COGR and CUR summaries recently issued.

SCIENTIFIC RESEARCH

National Science Foundation (NSF)

- \$2.5 billion total for research and related activities. Of the \$2.5 billion:
- \$300 million will be for major research instrumentation;
- \$200 million for academic facilities modernization (solicitation expected within a couple of weeks);
- \$100 million for HER Directorate, which includes: \$60 million for the Robert Noyce Scholarship Program; \$25 million for Math & Science Partnerships; and \$15 million for Professional Science Master's Programs;
- \$400 million will be for major research equipment and facilities construction; and
- \$2 million for the Office of Inspector General.
- NSF does not anticipate using stimulus funding for supplements to existing awards.
- Most awards will be made as standard grants, providing all of the money up front.

National Endowment for the Arts

- \$50 million will be provided for the NEA to help the retention of jobs for nonprofit organization and to provide grants to fund arts projects and activities.
- Of this grant funding 40 percent will be distributed as formula grants to State arts agencies and regional arts organization, and 60 percent will be set aside for competitive grants for selected arts projects and activities.

National Institutes for Health (NIH)

- \$10 billion total, which includes expanding good jobs in biomedical research to study diseases such as Alzheimer's, Parkinson's, cancer, and heart disease. From these funds:
- \$1 billion is reserved for competitive awards for construction and renovation of extramural research facilities; and
- \$500 million will be used for the construction and renovation of NIH buildings and facilities.
- NIH is preparing RFAs and expects to issue them in the next several days. Like NSF, they will be focusing on funding previously-reviewed, meritorious projects that because of budget limitations were unable to be funded. PIs may be asked to rework budgets into two years, and emphasis will be placed on RO1 grants.
- Provision will exist for both competing and administrative supplements for the purposes of increasing the tempo of research (cannot be used to expand the scope).
- NIH is developing a 2-year "Challenge Program" with a budget of \$0.5 million/year. Details will be forthcoming shortly.

Stimulus cont...

Department of Energy

- \$1.6 billion is reserved for the Office of Science for research in such areas as climate science, biofuels, high-energy physics, nuclear physics, and fusion energy sciences;
- An additional \$400 million will be provided for Advanced Research Project Agency—Energy.

NASA

- \$1 billion for NASA, including:
- \$450 million for Earth science missions to provide critical data about the Earth's resources and climate;
- \$150 million for system-level research, development, and demonstrations to improve aviation safety and the Next Generation Air Transportation System;
- \$400 million for exploration;
- \$50 million for cross-agency support;
- \$2 million for the Office of Inspector General

NIST

- \$580 million. From these funds:
- \$220 million for research, competitive grants, additional research fellowships and advanced research and measurement equipment and supplies, as well as
- \$360 million to address NIST's backlog of maintenance and renovation and for construction of new facilities and laboratories.
- Of the amounts provided, \$180 million will be for the competitive construction grant program for research science buildings.

NOAA

- \$230 million for NOAA operations, research, and facilities to address a backlog of research, restoration, navigation, conservation, and management activities
- An additional \$600 million will be for construction and repair of NOAA facilities, ships and equipment, to improve weather forecasting and to support satellite development.
- Of the amounts provided, \$170 million will address critical gaps in climate modeling and establish climate data records for continuing research into the cause, effects and ways to mitigate climate change.

U.S. Geological Survey

- \$140 million to repair and modernize USGS science facilities and equipment, including improvements to laboratories, earthquake monitoring systems, and computing capacity.



HIGHER EDUCATION

Pell Grants

- Provides \$15.6 billion to increase the maximum Pell Grant by \$500, from \$4,850 to \$5,350.

Student Financial Assistance

- \$200 million for undergraduate and graduate work-study programs, and \$60 million to help the Department of Education with surging student aid programs.

WEBSITES TO WATCH

In addition to following individual agency websites, be sure to check the summary page prepared by the SIUC ORDA office:

<http://www.siu.edu/~ovcr/stimulus.html>

—Christa Johnson



Kauzlarich cont.

tions with students; and works extensively with many graduate students who write theses grounded in his scholarly work. He has also mentored several SIUE students who are now decorated professors in their own right.

Dr. Kauzlarich has been conducting research, creating theories, and publishing books and articles in sociology and criminology for fourteen years. His research interests center on the study of white-collar crime, criminological theory, and more recently, victimology. He has produced four published books, over two dozen published articles, book chapters, and scholarly essays, dozens of conference papers, and his work has been reprinted in anthologies many times. Kauzlarich has established himself as one of the leading scholars in his field, having created key theoretical models and established a niche through his focus on state-sponsored crime. Indeed, among the many recommendations submitted on behalf of Dr. Kauzlarich, one colleague points to the valuable contributions he has made to the field, having “greatly enriched our understanding of state crime, a critical area of scholarship in an era which corporate state activities require more scrutiny than ever before.”

David’s work has received acclaim through numerous citations in American, Dutch, British, and Australian academic literature. He has received a special invitation to present findings at a Dutch academic conference in 2007, and he has gained recognition by the American Society of Criminology’s Division of Critical Criminology as the “Critical Criminologist of the Year” in 2005. He also received the SIUE Great Teacher Award recipient in 2005, and recently he was named the SIUE College of Arts and Sciences William and Margaret Going Endowed Professor in 2008. One of the highest honors comes perhaps from an established colleague who writes, “I can say with some confidence that Dr. Kauzlarich is among the best criminologists of his academic generation. In the area of state and corporate crime studies he is the best criminologist of his generation.”

Peer-led accolades also point to Kauzlarich’s leadership as a role model in the classroom. Research activity has been married with his teaching practice in various ways, including the use of his own theoretical models in curriculum and the production of textbook material to be used in class. Students highlight his ability to

inspire through his passion for the subject and for demonstrating real-world relevance. One student writes, “Dr. Kauzlarich’s research in the areas of State Crime, White-Collar Crime, and Victimology opened my eyes to a new way of looking at the world around me. He taught me not only to question the social world but also to do my best to find solutions to various social problems.”

The inspiration in the classroom also extends beyond regular class hours, as Kauzlarich proves his willingness to mentor students’ growth in the subject:

“While taking his seminar I discovered a deep interest in the field of criminology. His passion for the material, as well as his discussion of his own research, made the course not only engaging but enlightening. While the course itself was well structured and stimulated, my true interest in the field grew out of conversations with Dave outside of class. He was more than willing to give of his precious time to chat about what criminology was, as well as what is, could, and should be.”

David’s supporters repeatedly mention his commitment to a harmonious relationship between research and academic work. One former student highlights the extent to which Professor Kauzlarich “offers critical insight, forcing students to think beyond the textbook. He has incorporated his research into his lectures, bridging the sometimes difficult gap between research and academia.”

Another student writes: “I am proud to count Dr. Kauzlarich as not only a mentor, colleague, and co-author, but also as a friend. Simply I would not be where I am today were it not for him.”

As one who strongly embraces the teacher-scholar model, Kauzlarich believes that scholarly research should not be done for its own sake; rather it should help educate and inspire others to make their own contributions to understanding the world around them. The SIUE Graduate School and Graduate Faculty applaud Dr. Kauzlarich for his model efforts to incorporate real-time scholarship in the classroom, and we congratulate him on his award.

—Patience Graybill Condellone

Awarded Grants & Contracts: November 1, 2008—December 31, 2008

College of Arts & Sciences

Brown, Venessa Lawrence, Shonda	Social Work	\$87,440	Southern Region Permanency Enhancement Project	Illinois Department of Children & Family Services
Brugam, Richard	Biological Sciences	\$500	Lake Education Assistance Program Grant	Illinois Environmental Protection Agency
Carr, T.R.	Public Administration & Policy Analysis	\$10,350	Internship	Human Development Corporation of Metropolitan St. Louis
	Public Administration & Policy Analysis	\$8,052	Internship	Human Development Corporation of Metropolitan St. Louis
	Public Administration & Policy Analysis	\$6,900	Internship	Alliance of Glen Carbon & Edwardsville
Gay, Pamela	Physics	\$7,500	International Year of Astronomy	American Astronomical Society
Sabby, Jeffrey	Physics	\$4,521	SIUE Automated Observatory	University of Illinois

School of Business

Joplin, Janice	School of Business	\$4,708	Internship	Signature Health Care Foundation
Segal, Madhav Nath	Management & Marketing	\$14,410	MMR—Internship	DMRKYNETEC
Pettit, Mary Anne	Office of Economic Education & Business Research	\$10,000	Economic Education	Illinois Council on Economic Education

School of Dental Medicine

Jain, Poonam	Dental Medicine	\$33,043	Dissemination of Information on Ef- fects of Soft Drinks on Oral Health to School Children in Madison & St. Clair Counties	Daughters of Charity Foundation
Jain, Poonam	Dental Medicine	\$5,000	Early Childhood Caries Community Planning Grant	Illinois Department of Public Health

School of Education

Marlette, Stephen Hasty, Marilyn Lee Voepel, Tammy	Curriculum & Instruction Mathematics & Statistics Mathematics & Statistics	\$35,938	Mathematics and Science Leadership Initiative-2 Secondary Mathematics (MASLI2-SM)	Illinois State Board of Education
--	--	----------	---	-----------------------------------

School of Engineering

Bouvier, Dennis	Computer Science	\$80,005	Collaborative Research: A Network of Disciplinary Commons in Computing Education	National Science Foundation
Lozowski, Andrzej	Electrical & Computer Engineering	\$3,000	Maximum Power Tracking Technique for Multiple Photovoltaic Arrays	National Wildlife Federation
Hubbard, Kevin	Mechanical & Industrial Engineering	\$5,504	Development of a Pathogen Analysis Device	Ag-Defense Systems, Inc.
	Mechanical & Industrial Engineering	\$3,698	Development of Current State Maps for Manufacturing Processes	G.S. Robins & Co.

School of Nursing

Comrie, Rhonda	Primary Care Health System Nursing	\$19,000	Regional Asthma Collaborative Implementation of Evidence-Based Programs	Illinois Department of Public Health
Kethchum, Kathy	Primary Care Health System Nursing	\$22,500	Collaborative Service Agreement	SSM DePaul Health Center

School of Pharmacy

Devraj, Radhika	Pharmacy	\$10,000	Pharmacists' Understanding of Health Literacy	American Association of Colleges of Pharmacy
-----------------	----------	----------	---	--

Academic Affairs

Berry, Sharon Lee	Student Financial Aid	\$608,573	Federal Work Study	U.S. Department of Education
	Student Financial Aid	\$427,426	Federal SEOG	U.S. Department of Education

National Corn to Ethanol Research Center

Caupert, V. John	National Corn to Ethanol Research Center	\$6,000	NCERC Pilot Plant Services-Private Agreements	Private Client
	National Corn to Ethanol Research Center	\$6,931	NCERC Pilot Plant Services-Private Agreements	Private Client
	National Corn to Ethanol Research Center	\$3,075	NCERC Fermentation Lab Services-Private Agreements	Private Client
	National Corn to Ethanol Research Center	\$750	NCERC Workforce Training	Private Client
	National Corn to Ethanol Research Center	\$1,579	NCERC Pilot Plant Services-Private Agreements	Private Client
	National Corn to Ethanol Research Center	\$15,000	NCERC Workforce Training	Private Client
	National Corn to Ethanol Research Center	\$5,172	NCERC Fermentation Lab Services-Private Agreements	Private Client
	National Corn to Ethanol Research Center	\$5,172	NCERC Fermentation Lab Services-Private Agreements	Private Client

Administration

Walker, Richard	Administration—VC	\$500,000	Dental Testing Facility Renovation	Capital Development Board
-----------------	-------------------	-----------	------------------------------------	---------------------------

University Services to East St. Louis

Jamison, Theodore	University Services to East St. Louis	\$3,720	Internship	Illinois Arts Council
Mallory, Hazel	University Services to East St. Louis	\$2,065,597	FY 2008-09 Head Start Basic Grant Balance Funds	Department of Health & Human Services

Submitted Grants & Contracts: November 1, 2008—December 31, 2008

Colleges of Arts & Sciences

Brunkow, Paul	Biological Sciences	\$4,750	Monitoring the Chinese Mystery Snail Along the Great River Road	National Great Rivers Research & Education Center
Crane, Judith	Philosophy	\$45,500	Species & Ethics	American Council of Learned Society (ACLS)
Dimick, Brigham	Art & Design	\$7,000	Illinois Artist Fellowship in Visual Arts	Illinois Arts Council
Duvernell, David	Biological Sciences	\$4,900	Home Range & Movement Patterns of an Abundant Topminnow Species (<i>Fundulus Notatus</i>) in Cahokia Creek, A Small Tributary of the Mississippi River in Madison County, Illinois	National Great Rivers Research & Education Center
Fowler, Thomas Barry, Kelly	Biological Sciences	\$6,000	Molecular Identification Glomeromycete Fungi that Associate with <i>Trillium Recurvatum</i> in the Sweet William Forest, a Mississippi River Bluff Project	National Great Rivers Research & Education Center
Garcia, Hernando	Physics	\$77,724	Materials World Network: Spectrally-Tailored Thin Film Solar Materials by a Deterministic Incorporation of Nanocrystals	National Science Foundation
Guehlstorf, Nicholas	Political Science	\$800	Managing Watersheds-A Comparative Approach to Regional Regulatory Regimes	St. Francis Xavier University
Gurfinkel, Helena	English Language & Literature	\$1,500	Outlaw Fathers: Re-Imagining Patriarchy in British Literature	Northeast Modern Language Association
Kohn, Luci	Biological Sciences	\$4,881	Historical Demography of Alton & Edwardsville, Illinois: 1850-1860	National Great Rivers Research & Education Center
Lu, Yun	Chemistry	\$235,411	Oxidation of Alcohols via Hydride Transfer to Organic Carbocations: Structure-Reactivity-Mechanism	National Science Foundation
Narvarre, Edward	Chemistry	\$35,500	Cottrell College Science Awards	Research Corporation
Shabestary, Nahid	Chemistry	\$182,629	Application of Clay-Gemini Surfactant Complexes in Triphase Catalysis	National Science Foundation

College of Arts & Sciences cont..

Shaw, Michael	Chemistry	\$35,333	The Fundamental Optoelectronic Properties of Luminescent Metallacarborane Complexes	National Science Foundation
	Chemistry	\$247,765	Redox Behavior of Heme-No Models: A Vehicle for Outreach and Discovery	University of Oklahoma
Theodorakis, Chistopher	Biological Sciences	\$27,695	Evolutionary Toxicology & Population Genomic Assessment of Pollution Threats to Genetic Biodiversity of Marine Benthic Invertebrates in New Zealand	Fulbright Foundation—CIES

School of Dental Medicine

Whitson, Stanley	Dental School	\$74,520	Protection and Regeneration of the Dental Pulp	International Association for Dental Research, GSK
------------------	---------------	----------	--	--

School of Education

Bushrow, Kathy Reading, Gloria	Curriculum & Instruction	\$2,000	The Power of Storytelling: A Day of Stories and Strategies	International Reading Association
Cordova, Ralph	Curriculum & Instruction	\$136,809	Cultural Landscapes Collaboratory: Crossing Border, Creating Spaces and Making Local Knowledge Global Resources	American Council of Learned Societies (ACLS)
Kirk, Erik	Kinesiology & Health Education	\$5,166	Resistance Training and Insulin Action in Children	Washington University Institute of Clinical & Translational Sciences
Kirk, Erik Kirk, Stacie Fuchs, Wendy	Kinesiology & Health Education Special Education & Communication Disorders Special Education & Communication Disorders	\$18,291	Promoting Cognitive Development Through Obesity Prevention in Preschool Children	Washington University Institute of Clinical & Translational Sciences

School of Engineering

Krauss, Ryan Bouvier, Dennis	Mechanical & Industrial Engineering Computer Science	\$257,291	Visual Analytics and Interactive Model Generation for Dynamic Systems	National Science Foundation
---------------------------------	---	-----------	---	-----------------------------

Graduate Studies & Research

Brown, Kathleen White, Bradford	Illinois Education Research Council	\$221,815	Who is Leading Illinois Schools? A Comprehensive Analysis of the State's Principals	The Joyce Foundation
Hansen, Stephen	Graduate Studies & Research	\$10,000	Master's Degree in University Research Administration	NCURA

School of Nursing

Arras, Rita	Family Health & Community Health Nursing	\$25,000	Developing an Evaluation Plan for a Community-Based Physical Fitness Initiative	Washington University Insti- tute of Clinical & Transla- tional Sciences
Bernaix, Laura	Family Health & Com- munity Health Nursing	\$200,000	Feasibility of a Paternal Breastfeed- ing Education Hospitalized Preterm Infants	Washington University Insti- tute of Clinical & Transla- tional Sciences
Flick, Louise	Family Health & Com- munity Health Nursing	\$25,000	Development Phase I: Tobacco Use in Pregnancy and Psychiatric Disor- der	Washington University Insti- tute of Clinical & Transla- tional Sciences
Maurer, Marcia Johnson, Kevin Lin, ZhiQing	School of Nursing Chemistry Environmental Sciences	\$99,650	Characterization of Persistent Pollut- ants in Human Cord Blood	Washington University Insti- tute of Clinical & Transla- tional Sciences
Schmidt, Cynthia	Family Health & Com- munity Health Nursing	\$25,000	Parental Practices & Teen Diabetes Self-Management: Survey Develop- ment	Washington University Insti- tute of Clinical & Transla- tional Sciences

National Corn to Ethanol Research Center

Zhang, Yanhong	National Corn to Etha- nol Research Center	\$36,172	Title Study of Tryptophan Digestibil- ity in DDGS Fed to Pigs	Illinois Corn Marketing Board
	National Corn to Etha- nol Research Center	\$58,164	Fate of Lysine and Phytate During the Bioprocess of Making DDGS	National Pork Board
	National Corn to Etha- nol Research Center	\$50,978	Comprehensive Evaluation of Lysine Digestibility in DDGS	National Pork Board

School of Pharmacy

Witt, Ken	Pharmacy	\$286,000	Somatostatin Agonist Treatment for Cognitive Aging and Dementia	National Institute of Aging
-----------	----------	-----------	--	-----------------------------

Administration

Brown, Venessa	Office of the Provost & Vice Chancellor	\$5,400	Terrorism and Counter-Terrorism	Northern Illinois University
----------------	--	---------	---------------------------------	---------------------------------

Awarded Grants & Contracts: January 2009

College of Arts & Sciences

Bush, Richard	Public Administration & Policy Analysis	\$50,000	Drugfree Communities	Chestnut Health Systems
Carr, T.R.	Public Administration & Policy Analysis	\$8,052	Internship	City of O'Fallon
	Public Administration & Policy Analysis	\$5,176	Internship	Madison County Planning
	Public Administration & Policy Analysis	\$5,176	Internship	OnlyLink
	Public Administration & Policy Analysis	\$13,800	Internship	City of Collinsville
Gay, Pamela	Physics	\$98,131	The Universal Zoo: Citizen Science from the Moon to the Early Universe	NASA
Hu, Shunfu	Geography	\$19,995	Orthorectification of Aerial Images from 1983 in Madison County, Illinois (2nd & 3rd Phase)	Chief County Assessment Office, Madison County, Illinois
Pearson, Randall Davis, Nancy	Geography	\$1,390	Putting Illinois on the Map II	Lewis & Clark Library System
Pearson, Randall Davis, Nancy	Geography	\$40,000	Putting Illinois on the Map III	Lewis & Clark Library System

School of Business

Mister, Kwa	School of Business	\$94,500	Illinois Entrepreneurship Network SBDC/ITC FY09	Illinois Department of Commerce & Economic Opportunity
Segal, Madhav Nath	Management & Marketing	\$14,410	MMR—Internship	Unicom-ARC
Segal, Madhav Nath	Management & Marketing	\$14,410	MMR—Internship II	Covedien

National Corn to Ethanol Research Center

Caupert, V. John	National Corn to Ethanol Research Center	\$12,200	NCERC Fermentation Lab Services-Private Agreements	Private Client
------------------	--	----------	--	----------------

University Services to East St. Louis

Jamison, Theodore	University Services to East St. Louis	\$14,000	Youth Arts Program FY08-09	Illinois Arts Council
Mallory, Hazel	University Services to East St. Louis	\$151,009	Reprogram Unobligated Funds From FY2007-2008	Department of Health & Human Services

Administration

Brown, Venessa	Provost & VC	\$5,400	Terrorism & Counter-Terrorism	Northern Illinois University
----------------	--------------	---------	-------------------------------	------------------------------

Submitted Grants & Contracts: January 2009

College of Arts & Sciences

Acheson, Gillian	Geography	\$2,000	Learning & Leadership Grant for GIS Professional Development	The NEA Foundation
Essner, Richard	Biological Sciences	\$6,000	Status of a Small Mammal Forest-Floor Community Assemblage in Southwestern Illinois	National Great Rivers Research & Education Center
Garcia, Hernando Hamad Abdullatif	Physics	\$276,060	MRI: Acquisition of an Ultrafast Laser for Teaching & Research	National Science Foundation
Gay, Pamela	Physics	\$69,967	Investigating Audience Engagement with Citizen Science	Adler Planetarium
Gay, Pamela	Physics	\$83,872	CDI-TYPE II: Zooniverse-Conquering the Data Flood with Citizen Science	Adler Planetarium
Grossman, Michael	Geography	\$3,000	Reconstructing a Typhoon Chronology for Japan in the 19th Century using Historical Documents	Northeast Asia Council of the Association for Asian Studies (NEAC)
Hildebrandt, Mark	Geography	\$1,500	Assessing Climate Change in Cold Environments	American Association of Geographers
Khazaeli, Sadegh Voss, Eric Hamad, Abdullatif Kitz, Dennis Springer, Cathryn	Chemistry Chemistry Physics Biological Sciences Geography	\$299,462	Hands-On Science: Improving Science Teacher Quality	Illinois Board of Higher Education
Minchin, Peter Essner, Richard	Biological Sciences	\$6,000	Effects of White-Tailed Deer on Bottomland Forest Restoration at the Confluence of the Mississippi & Illinois Rivers	National Great Rivers Research & Education Center
O'Brien, Leah	Chemistry	\$74,459	Collaborative RUI: CRIF-ID: Enhanced Resolution, Quantitative Features & Wavelength Coverage for Ultra-Sensitive Molecular Absorption Studies	National Science Foundation
Retzlaff, William	Biological Sciences	\$6,000	Using Native Plant Species in Mid-western Green Roof Systems	National Great Rivers Research & Education Center
Sabby, Jeffrey	Physics	\$10,000	SIUE Automated Observatory "Roboscope"	Illinois Space Grant Consortium (NASA)
Schaefer, Ronald	English Language & Literature	\$50,000	Capacity Assessment and Planning Between University of Ibadan, Nigeria and Southern Illinois University Edwardsville	USAID

College of Arts & Sciences—cont.

Schulz, Kurt	Biological Sciences	\$5,060	Invasive Species Colonization in Old Growth Forest Canopy Openings	National Great Rivers Research & Education Center
Starr, Michael Hu, Shunfu Pearson, Randall	Geography	\$149,997	Evaluating Indiana Bat Habitat Conditions on Surface Coal Mining Sites Using Remote Sensing Technology: Phase 2	U.S. Department of Interior—Office of Surface Mining

School of Education

Cordova, Ralph	Curriculum & Instruction	\$46,000	Piasa Bluff Writing Project	National Writing Project
----------------	--------------------------	----------	-----------------------------	--------------------------

School of Engineering

Cho, Sohyung Lee, H. Felix Hubbard, Kevin Youn, Luis	Mechanical & Industrial Eng. Mechanical & Industrial Eng. Mechanical & Industrial Eng. Electrical & Computer Eng.	\$169,347	MRI: Acquisition of Major Components Required for Constructing Supply Chain Test-Bed	National Science Foundation
Engel, George	Electrical & Computer Eng.	\$38,850	STTR-Blended Clocked & Clockless Integrated Circuit Systems-Phase II	Blended Integrated Circuit Systems, LLC
Fries, Ryan	Civil Engineering	\$199,971	Evaluating Multi-Objective Fault Tree Analysis as a Transportation Infrastructure Security Tool	Department of Homeland Security
Zhou, Huaguo Fries, Ryan	Civil Engineering	\$93,605	Development of a Highway Incident Management Operational & Training Guide	Illinois Center for Transportation

School of Pharmacy

Neumann, Bill	Pharmacy	1,823,588	Orally Available Peroxynitrite Decomposition Catalyst as Novel Non-Narcotic Analgesics Targeting Chronic Neuropathic Pain	National Institutes of Health
Schober, Joseph	Pharmacy	\$5,000	Overcoming Tumor Resistance & Drug Toxicity Through Combined Use of Microtubule & SRC Kinase Inhibitors	American Foundation for Pharmaceutical Education

Directory of Staff

Steve Hansen, Associate Provost for Research and Dean, Graduate School
shansen@siue.edu extension 3018

Ron Schaefer, Associate Dean, Graduate School
rschaefer@siue.edu extension 5264

Christa Johnson, Associate Dean, Graduate School
cjohnaa@siue.edu extension 2171

Jo Barnes, Director, ORP
jbarnes@siue.edu extension 5199

David Bray, Senior Grants Accountant, ORP
dbray@siue.edu extension 3693

Patience Graybill Condellone, Research Administrator, ORP
pgraybi@siue.edu extension 5618

Teri Gullede, Research Administrator, ORP
tgulled@siue.edu extension 3114

Cindy Fulton, Grants and Contracts Administrator, Graduate School
cfulton@siue.edu extensions 3164 and 3010

Chris Kessler, Administrative Secretary, Graduate School
ckessle@siue.edu extension 3117

Gail Munneke, Grants Accountant, ORP
gmunnek@siue.edu extension 3162

Shelly Robinson, Graduate Recruitment Coordinator
michero@siue.edu extension 2811

Trisha Simmons, Grants Accountant, ORP
tsimmon@siue.edu extension 3008

Linda Skelton, Research Administrator/Ethical Compliance, ORP
lskelto@siue.edu extension 2958

Tammy Smart, Grants and Contracts Administrator, ORP
thornbe@siue.edu extension 5364

