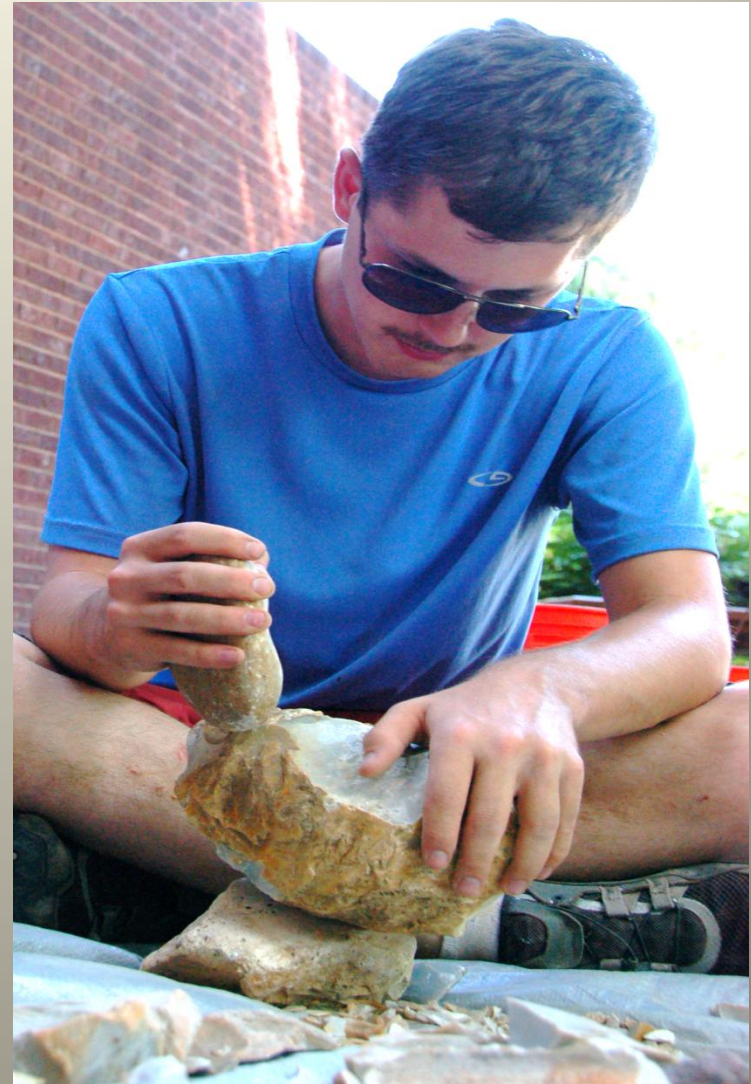


Sourcing Chert Types from the Gehring Site: Analysis of Potential Movement Patterns

James Sanders

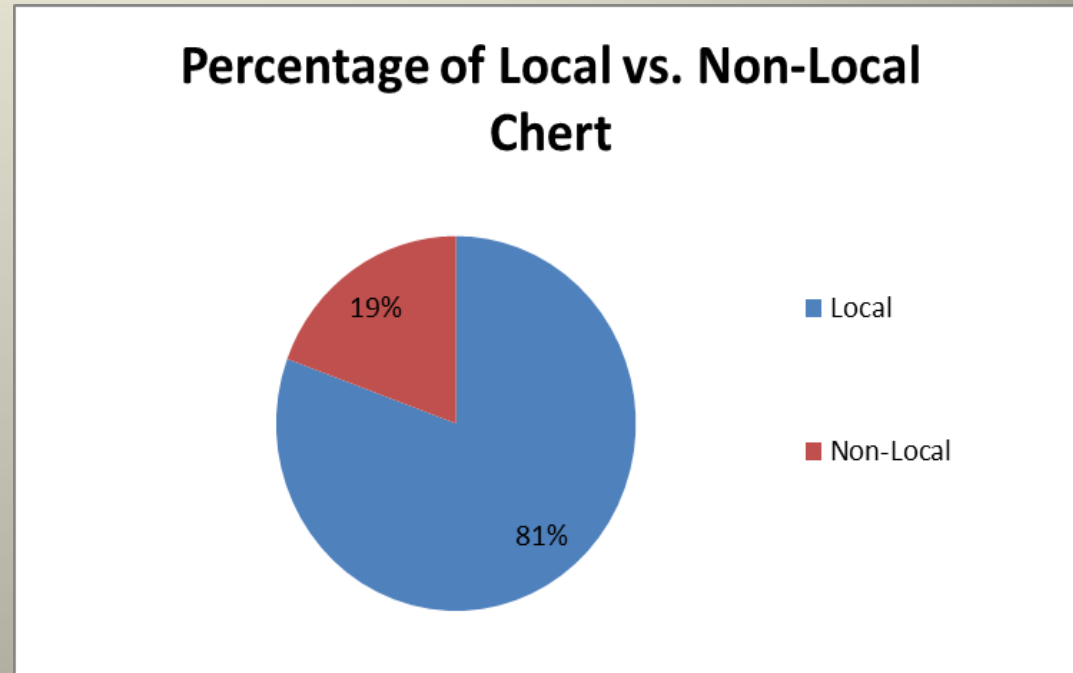
Project Purpose

- Identify source location of lithics found at the Gehring site
- Determine regions of trade or migration
- Source locations give an idea of possible trade or migration routes



Hypothesis

- The most common non-locals cherts are acquired from south of the American Bottom region



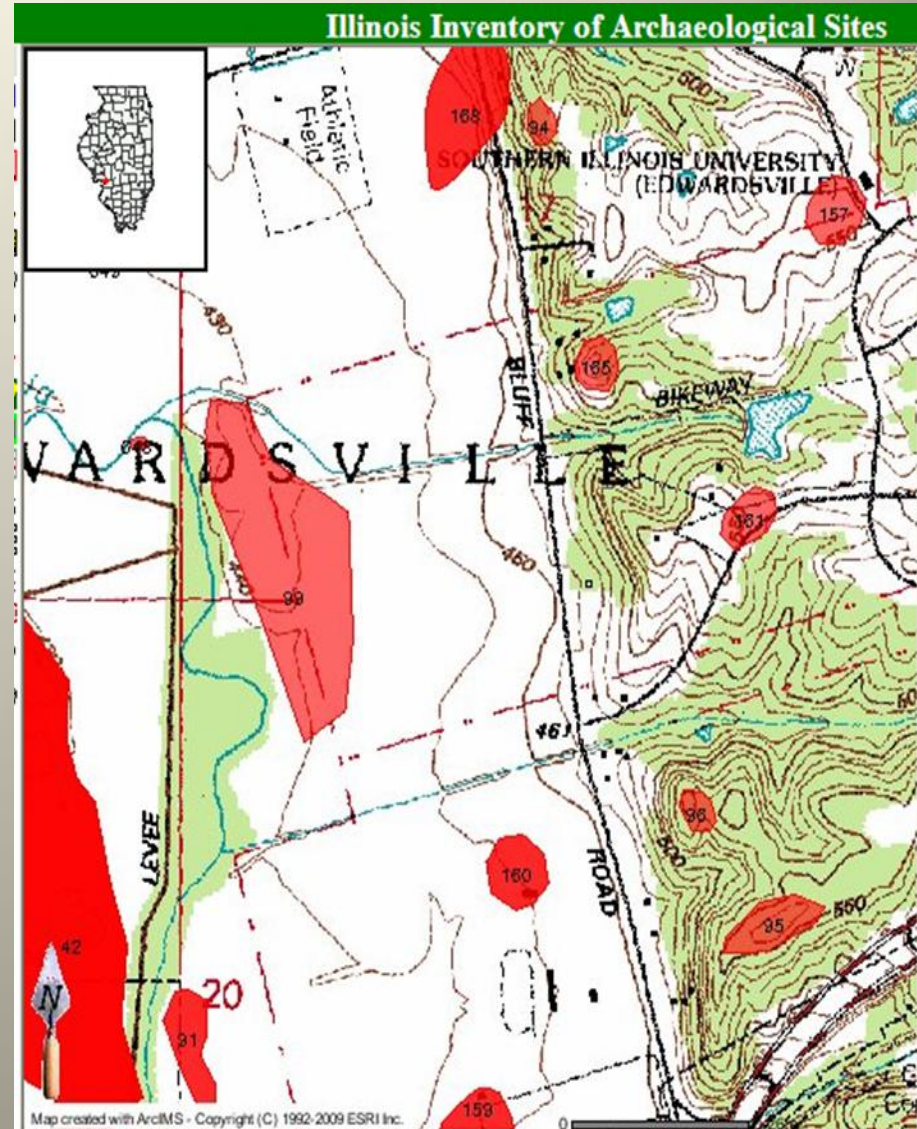
Methods

- Artifact collection and cleaning
- Macroscopic Analysis and Identification
 - Chert type
 - Flake type
- Database creation
- Source identification

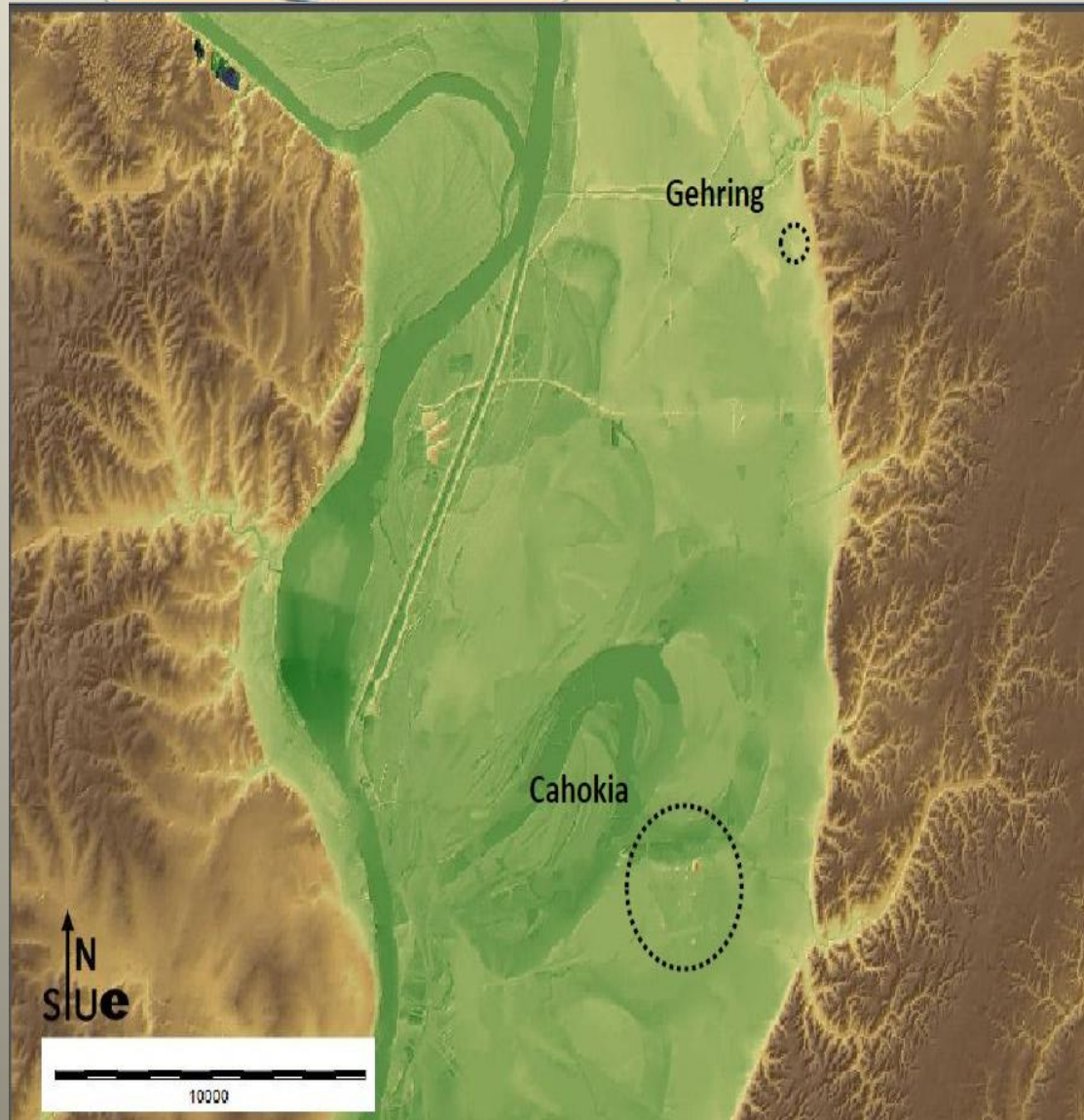


The Gehring Site

- 11MS99
- Excavated in the 1970s, 1990s, 2009, 2010, and 2011
- Occupation from Archaic, Woodland, and Mississippian time periods



Illinois and the American Bottom



www.powellarcgy.org/AmericanBottom.html

Features and Excavation

- Features 161, 171, 182, and 189
- Excavation
 - Shovel and Trowel
 - Screening



Lithic Examples



A

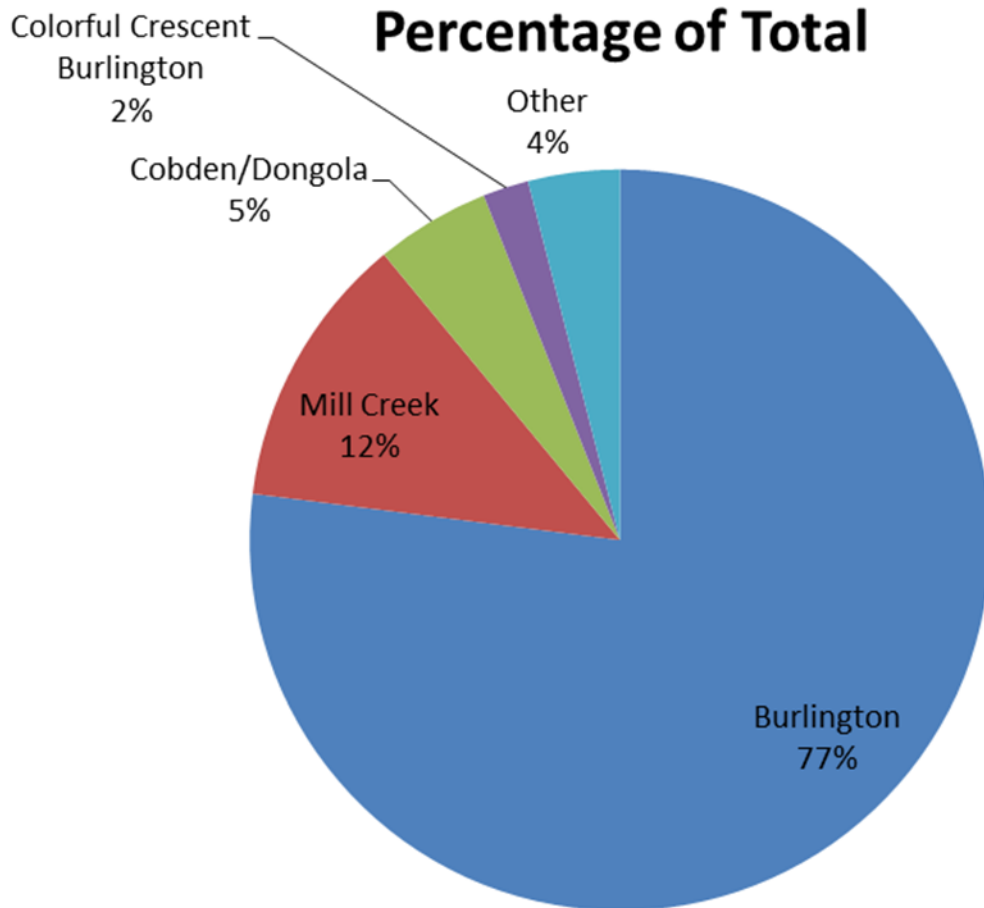


B



C

Chert from Features

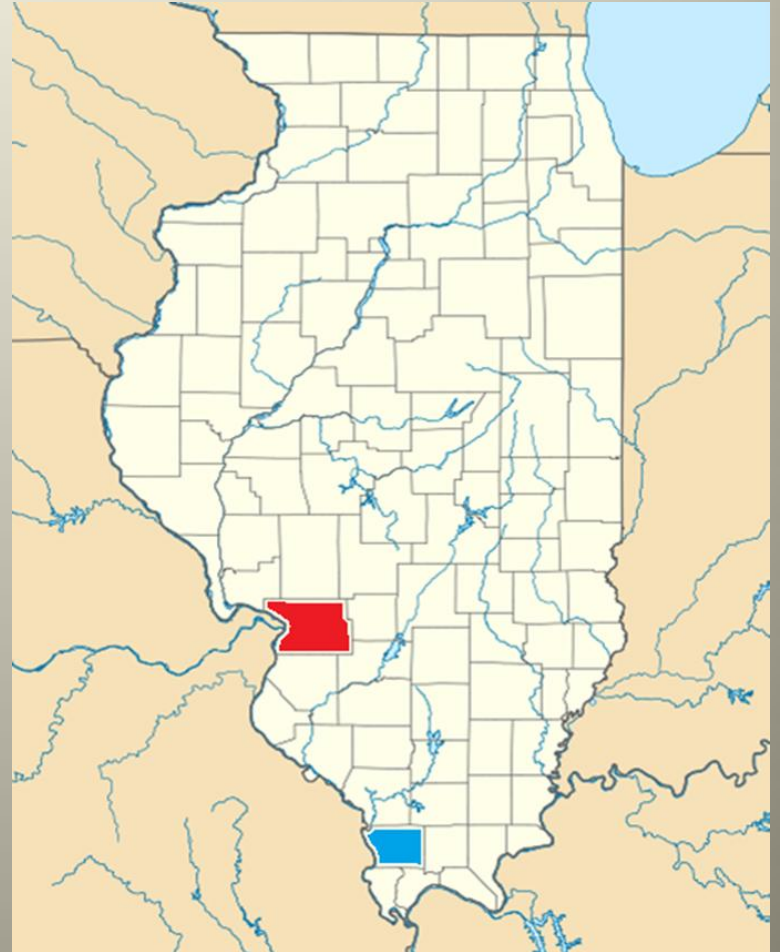


Results

- 77% of chert was Burlington
- 17% of chert was from southern Illinois
- 4% local non-Burlington cherts
- 2% non-local or unknown cherts

Trade or Migration

- Cobden/Dongola and Mill creek originate in Union County
- Over 110 miles away



Conclusion

- Site had some contact with Southern Illinois, Northern Illinois, and Missouri
 - Greatest area of contact in Southern Illinois
- Agricultural Site
- Trade or Migration



Further Study

- More excavation at the site
- Analysis of other sites in the area
- Analysis of more lithic collections



Acknowledgements

- I would like to thank Dr. Julie Holt for her support and advice. Also Dr. Gregory Vogel for conducting the field school. Finally Dan Blodgett for teaching me how to analyze lithics and Matt Wegescheide for helping me with dating the features.