



Surveying the Whiteside Cemetery Using Geophysical Remote Sensing Techniques

Amber Harper

Goals

- Collect historical data about The Whiteside Cemetery
- Conduct a magnetic survey
 - Analyze the data
- Map and document the cemetery
- Public awareness

Anthropological Relevance

- Historical Archaeology
- Noninvasive Archaeological Methods

Loss of Information

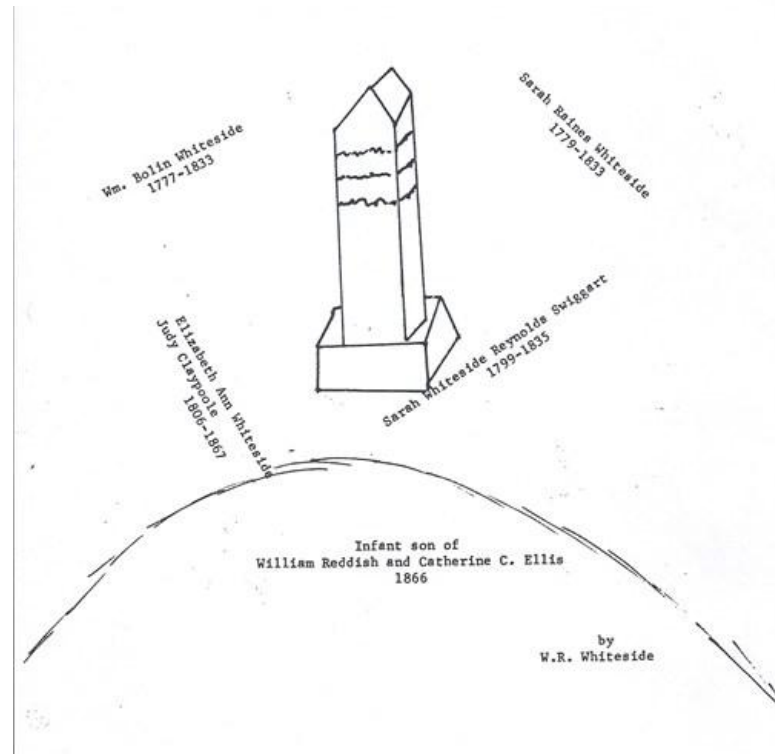
- Cemeteries all over Illinois are in a state of disrepair and many are unprotected
- 2003 – Human long bone was recovered at Whiteside Cemetery

Methods

- Historical Data
 - Ancestry.com, Historical Documents, Newspapers
- Magnetic Survey
 - Mapped 6 Grids, 20x20 Meters
 - Bartington 601 Magnetic Gradiometer

Who's buried at The Whiteside Cemetery?

- William B. Whiteside
- Sarah Raine
- Sarah Whiteside
- Elizabeth Claypoole
- Infant son of William Reddish





William B. Whiteside

1777-1835



Elizabeth Whiteside

1806-1867



Sarah Whiteside

1779-1833



Sarah Swiggart

1799-1835



Infant son of William Reddish

1866 – alive 11 days.

The Whiteside Family

- Traveled to Illinois from North Carolina in 1793
- Settled in the Goshen area
- Captain in the War of 1812
- Captain of the United States Rangers in 1813
- Madison County Sheriff

THE WHITESIDE CEMETERY

MARCH 27, 2012

Post

2 METERS

← N

Post

Stump

762cm

OBELISK

300cm

300cm

LIMESTONE

Stump

250cm

400cm

LIMESTONE

200cm

SMALL LIMESTONE

Posts

Sketch Map of the Cemetery

What does a magnetometer do?

- Measure the earth's magnetic field
- Data can be converted into maps
- Produce positive and negative values
- Anomalies include: graves, pits, hearths, ceramics, bricks, metals, etc.

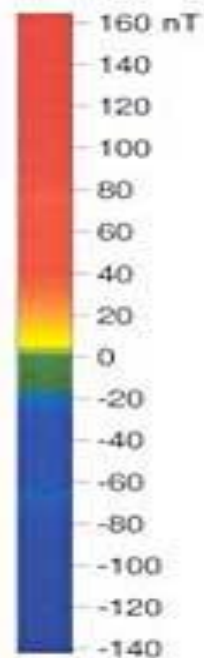
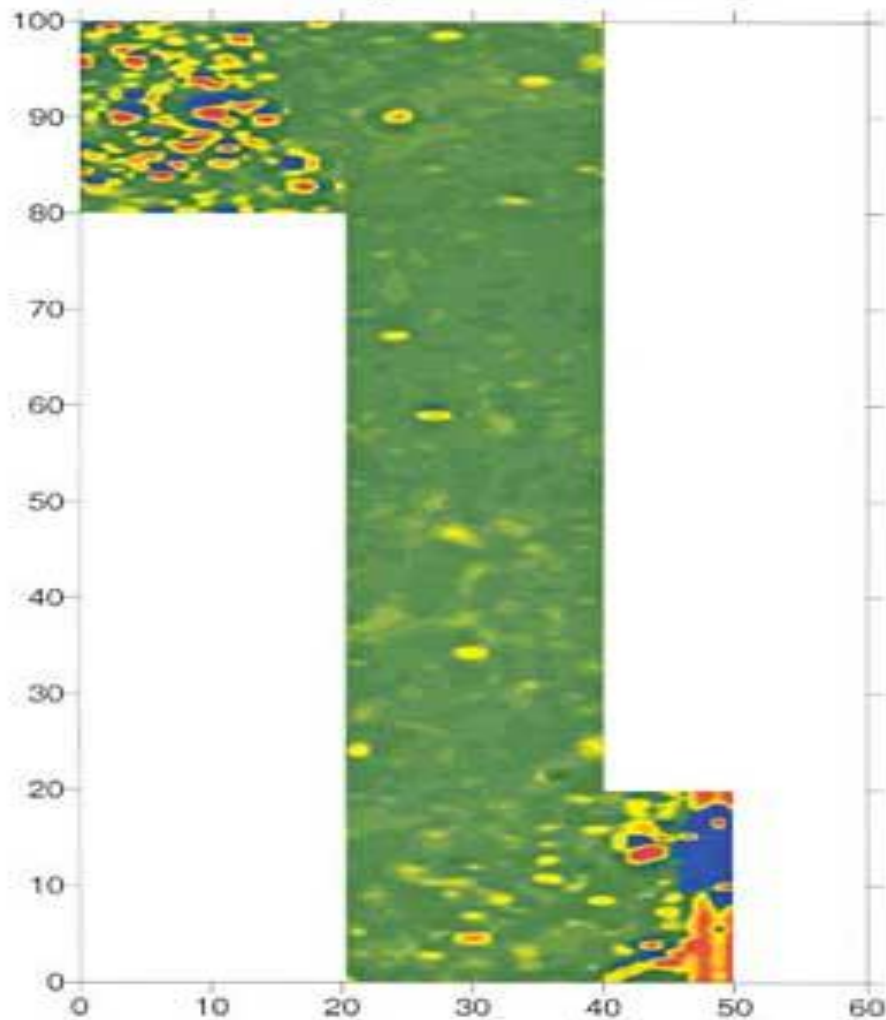


Booker T. Washington National Monument
Franklin County, Virginia
June 22-26, 1998

Magnetic Survey
Burroughs Cemetery and Vicinity



Magnetic
North



0 10 20 30 40 meters

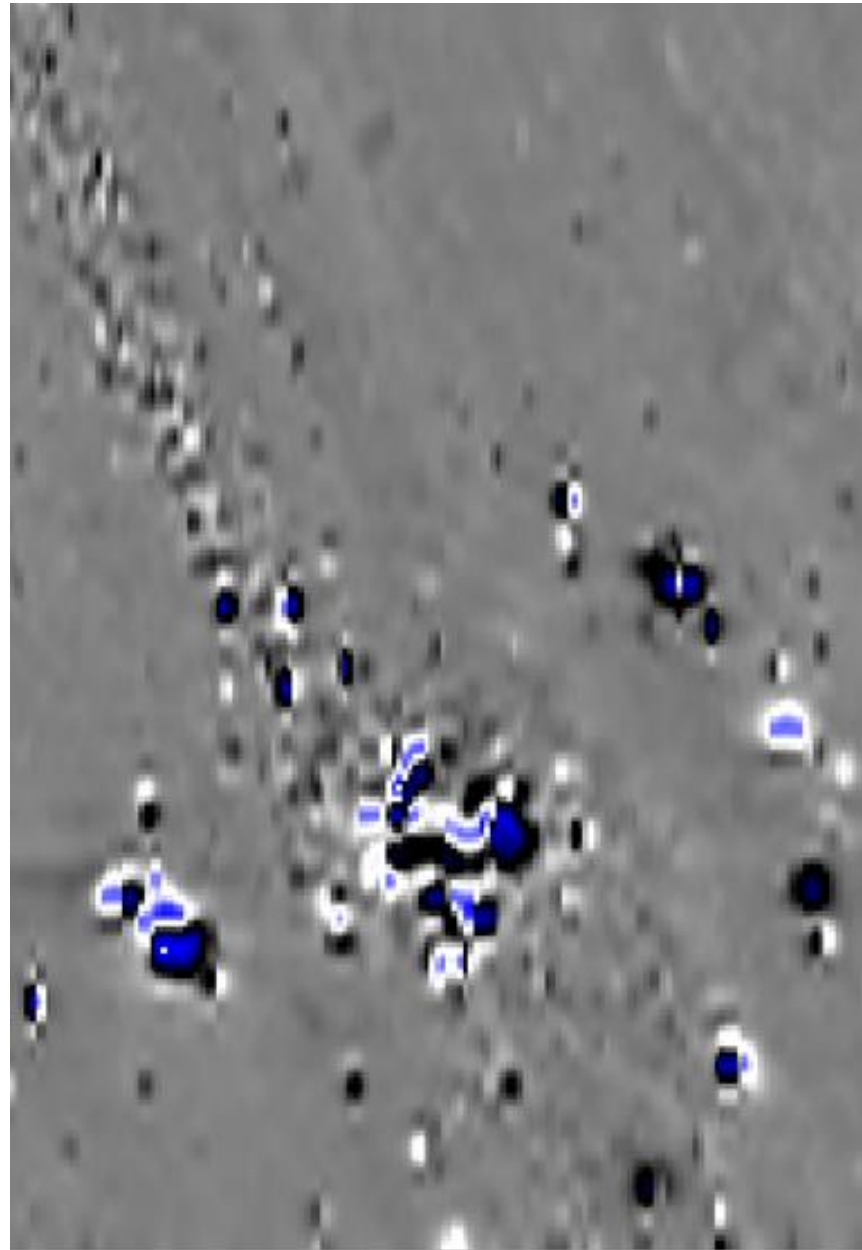
Results

- The magnetic survey showed:
 - Many Anomalies
 - Historic Fence
 - Historic Pathway
- Possible Unmarked Graves?
- Too Much Magnetic Noise!

60 Meters

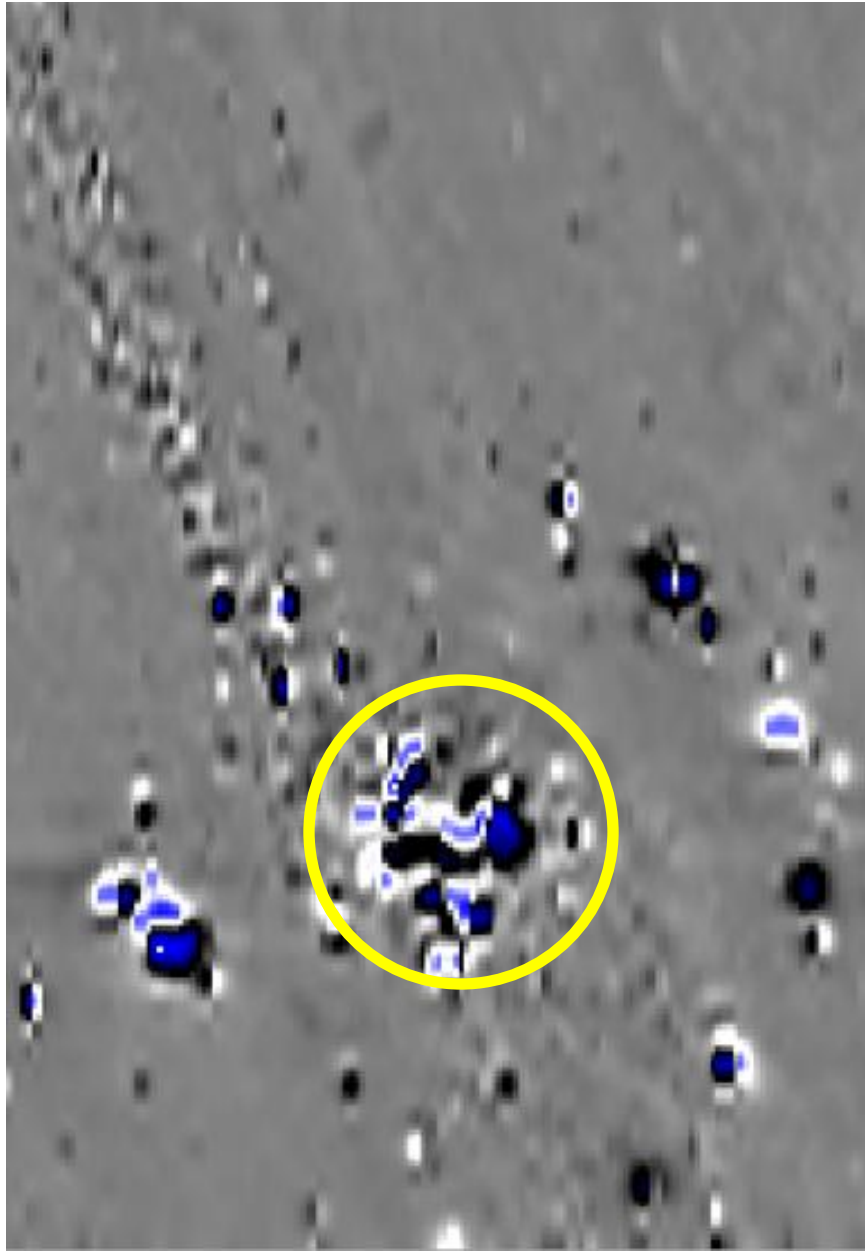


N

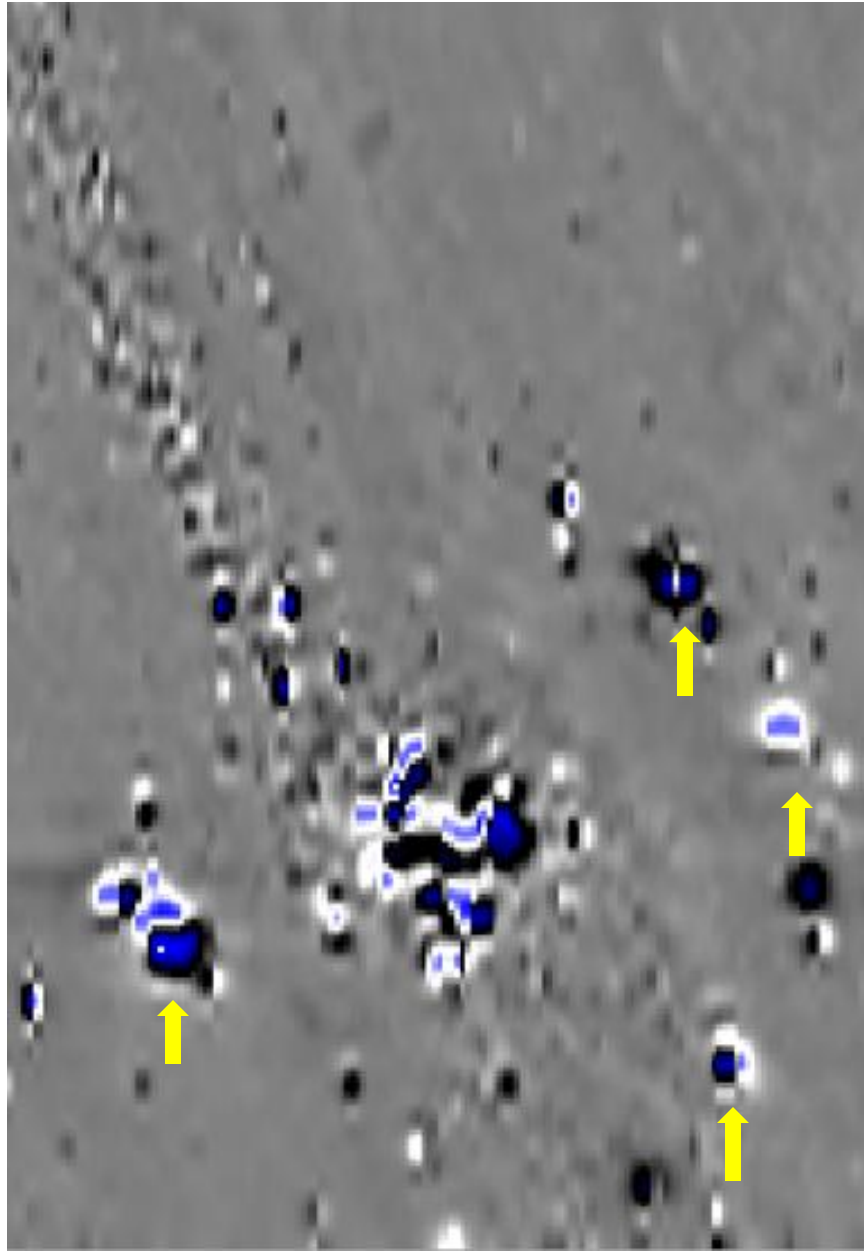


40 Meters

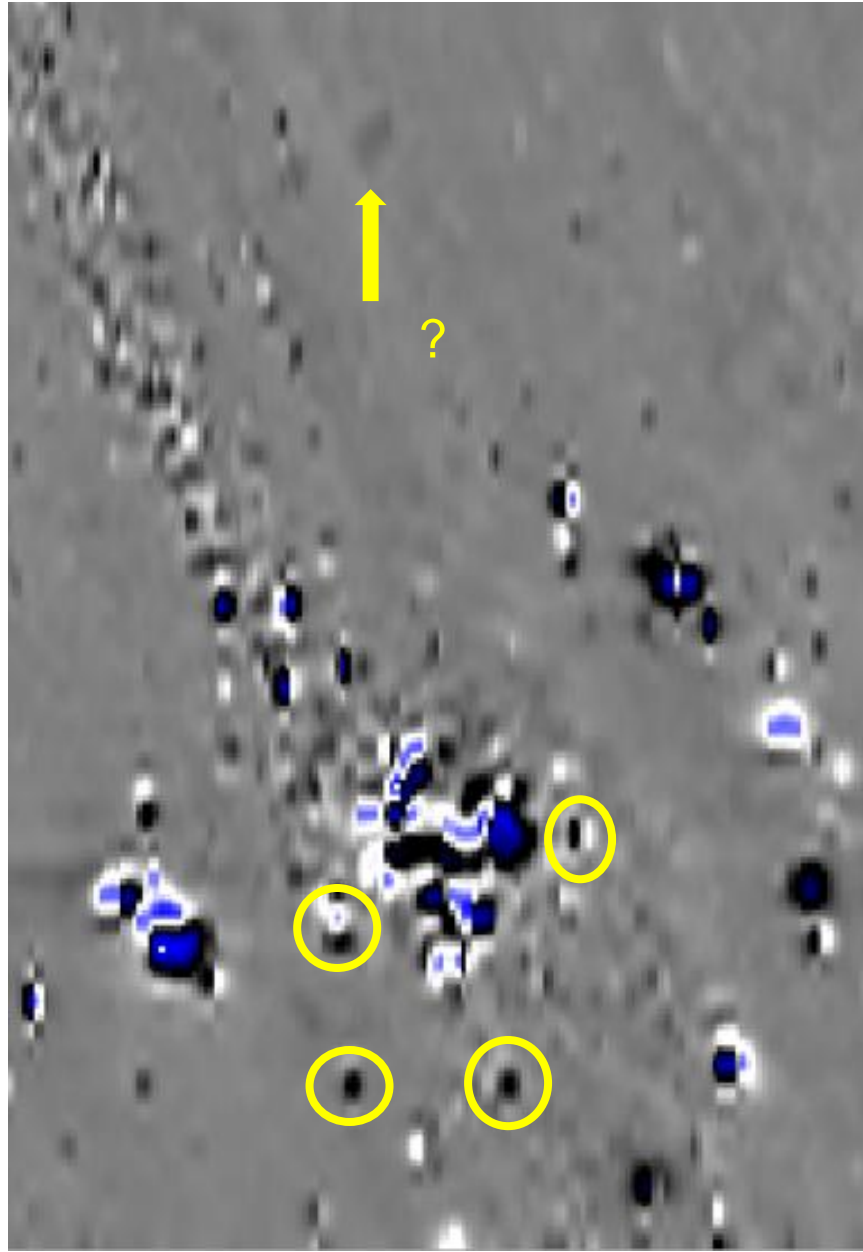
N



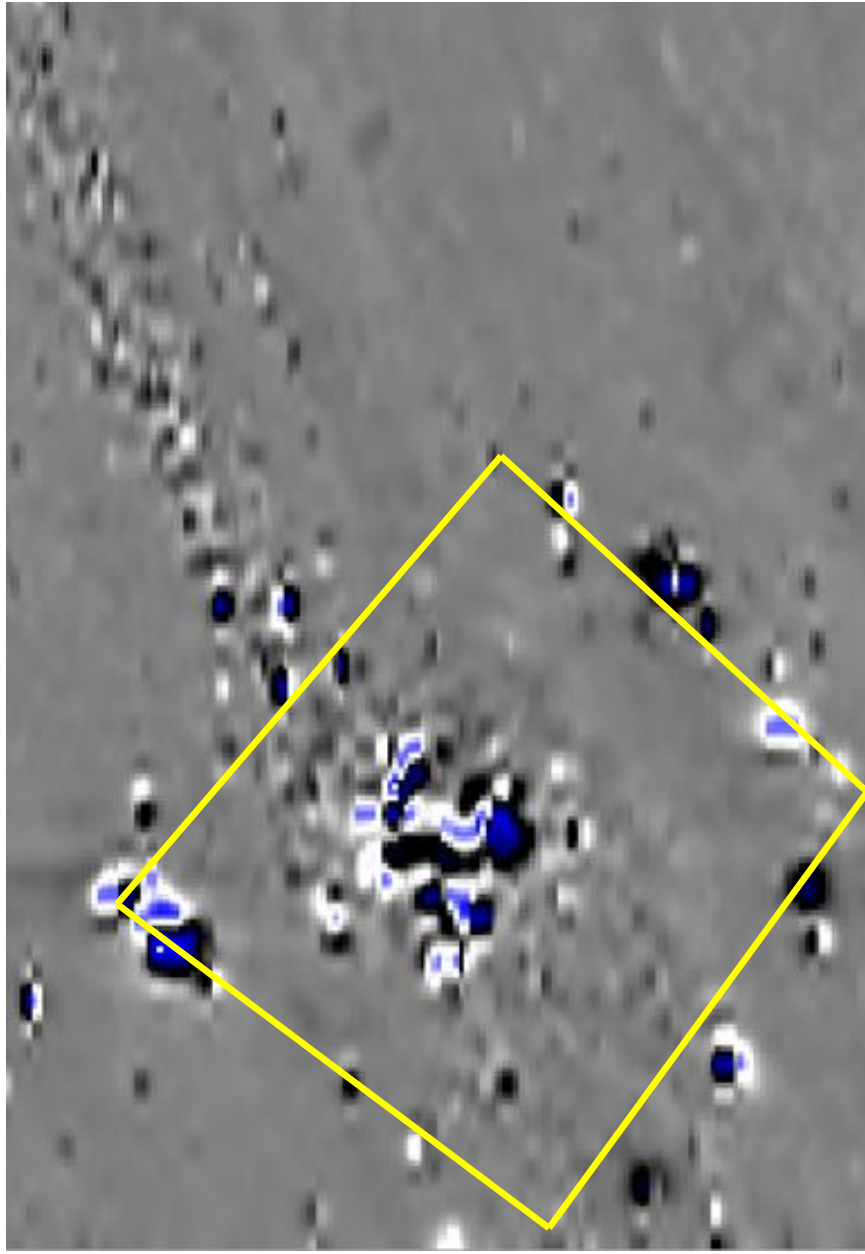
N
↓



N



N
↓



Room For Improvement

- Higher resolution
- Landscape
- Magnetic Cleanliness
 - Site

Conclusion

- Successful documentation of the site
- Magnetic survey of the area
- Sharing information with others