

Dining Mississippian in the Central Illinois River Valley

Zooarchaeological Evidence from a
Mississippian Household in the Cahokian
Hinterlands

By Jessica Wright

Looking at Illinois & the Central Illinois River Valley

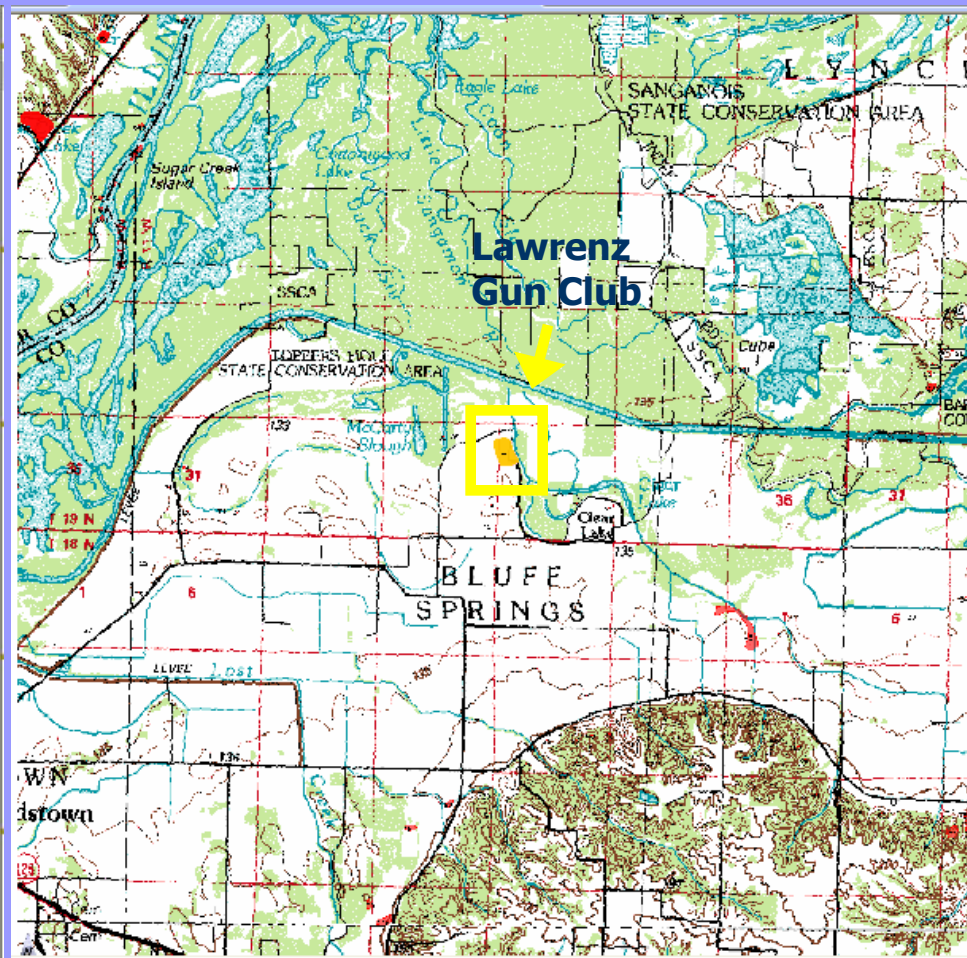


U of I GIS, 3-D Terrain Map of IL
<http://www.isws.illinois.edu/chief/gis/past/illinois3d.aspx>



IL River floodplain today, IDNR
http://www.oftimeandtheriver.org/resources/summaryandfuture/summaryandfuture_03.htm

Lawrenz Gun Club



Central Illinois River Valley



D. Asch, Illinois State Museum-RCC

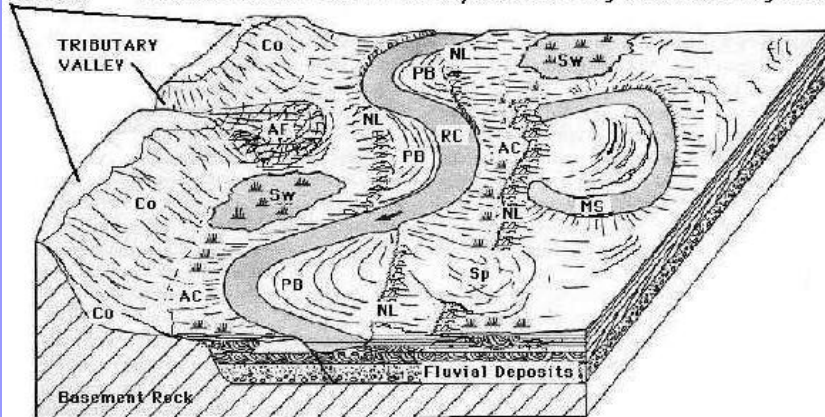
<http://www.museum.state.il.us/RiverWeb/landings/Ambot/prehistory/archives/images/environment/pages/paenv01clr2.html>



By Andrew D. Birrell

<http://www.museum.state.il.us/RiverWeb/landings/Ambot/prehistory/archives/images/environment/pages/illmiss8spot.html>

UPLANDS Landforms Common in Valleys Containing a Meandering River



AC = Abandoned Channel	MS = Meander Scar	RC = River Channel
AF = Alluvial Fan	NL = Natural Levee	Sp = Splay Deposit
Co = Colluvial Deposit	PB = Point Bar	Sw = Swamp/Wetland

Being Mississippian...

- Centralized authority
- Social hierarchy
- Maize agriculture
- Specific ritual areas
e.g. large earthen mounds
- Year-round site habitation



Larson Site as it may have appeared in A.D. 1100; IL State Museum
http://www.museum.state.il.us/muslink/nat_amer/pre/htmls/m_sites.html

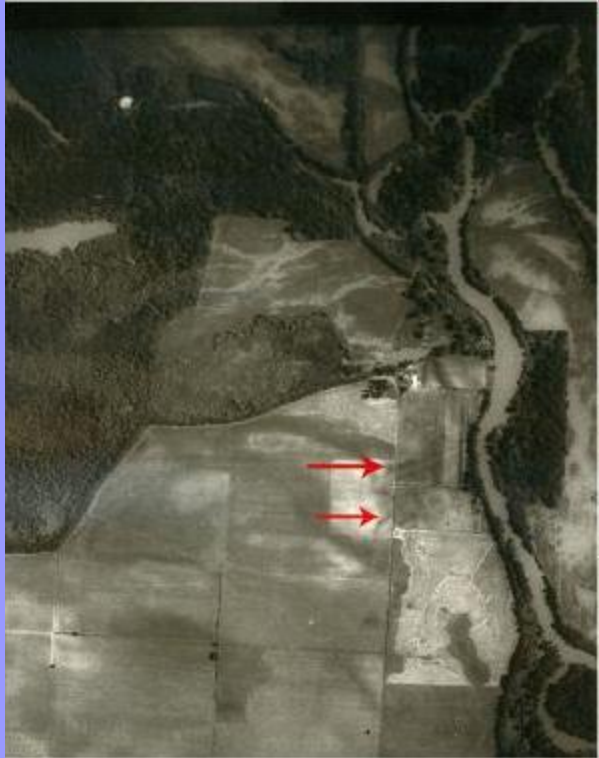
...in the Lands of the Late Woodland

- Migration of American Bottom peoples into the IL River Valley
- Adoption of Mississippian ideologies by Late Woodland Peoples
- *In situ* establishment of Mississippian outposts along trade & travel routes



Map/Graphics by Herb Roe
http://wapedia.mobi/en/File:Mississippian_cultures_HRoe_2010.jpg

LGC Site and Excavation



1938 aerial photo of LGC, by Rich Fishel, ITARP
<http://www.iupui.edu/~anthjjw/2010FieldSchool.htm>



Image of house atop a platform mound at LGC.
<http://www.iupui.edu/~anthjjw/2010FieldSchool.htm>



Unit 10-3, a burnt structure, and students from Western IL University and IUPUI.
http://liberalarts.iupui.edu/anthropology/index.php/news/summer_field_school_2010.



Dr. Wilson and students at work in Unit 10-1 LGC.
http://liberalarts.iupui.edu/anthropology/index.php/news/summer_field_school_2010

LGC Artifacts



Mississippian plate with sunbursts, circles and crosses from the LGC Hanning Collection.
<http://www.iupui.edu/~anthjjw/2010FieldSchool.htm>



Chunky stone from the LGC Hanning Collection.
Dr. Patricia Anderson, Western Illinois University.
<http://www.iupui.edu/~anthjjw/2010FieldSchool.htm>



Millcreek hoe from the LGC Hanning collection,
by Dr. Patricia Anderson, Western Illinois University.
<http://www.iupui.edu/~anthjjw/2010FieldSchool.htm>



Mississippian jar from the LGC Hanning collection
<http://www.iupui.edu/~anthjjw/2010FieldSchool.htm>

Perceiving Mississippian Culture in the Illinois River Valley



Stratigraphy within a Mississippian pit; Illinois State Museum
<http://www.museum.state.il.us/RiverWeb/landings/Ambot/prehistory/archives/images/economy/pages/ptecon30clr2-2.html>



Illinois State Museum Peoples of the Past exhibit
<http://www.museum.state.il.us/RiverWeb/landings/Ambot/prehistory/archives/images/economy/pages/ptecon02clr2.html>

- Environmental use/resource availability
- Population demographics
- Political affiliations
- Rituals and ideology

Faunal Analysis

- Diet
- Menu
- Seasonality
- Household size
- Feasting and Tribute



Modified Swan Bones, IL State Museum
<http://www.museum.state.il.us/RiverWeb/landings/Ambot/prehistory/archives/images/art/pages/ptart11clr2.html>



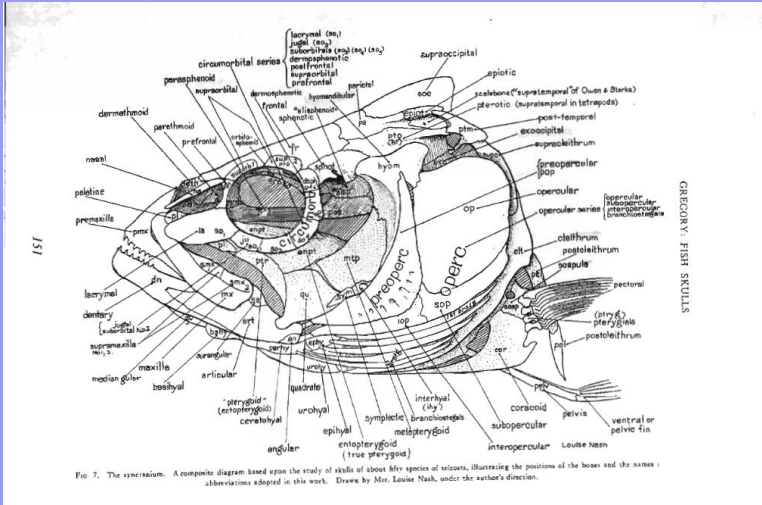
By Richard Grubb
<http://www.richardgrubb.com/ZooArch.htm>



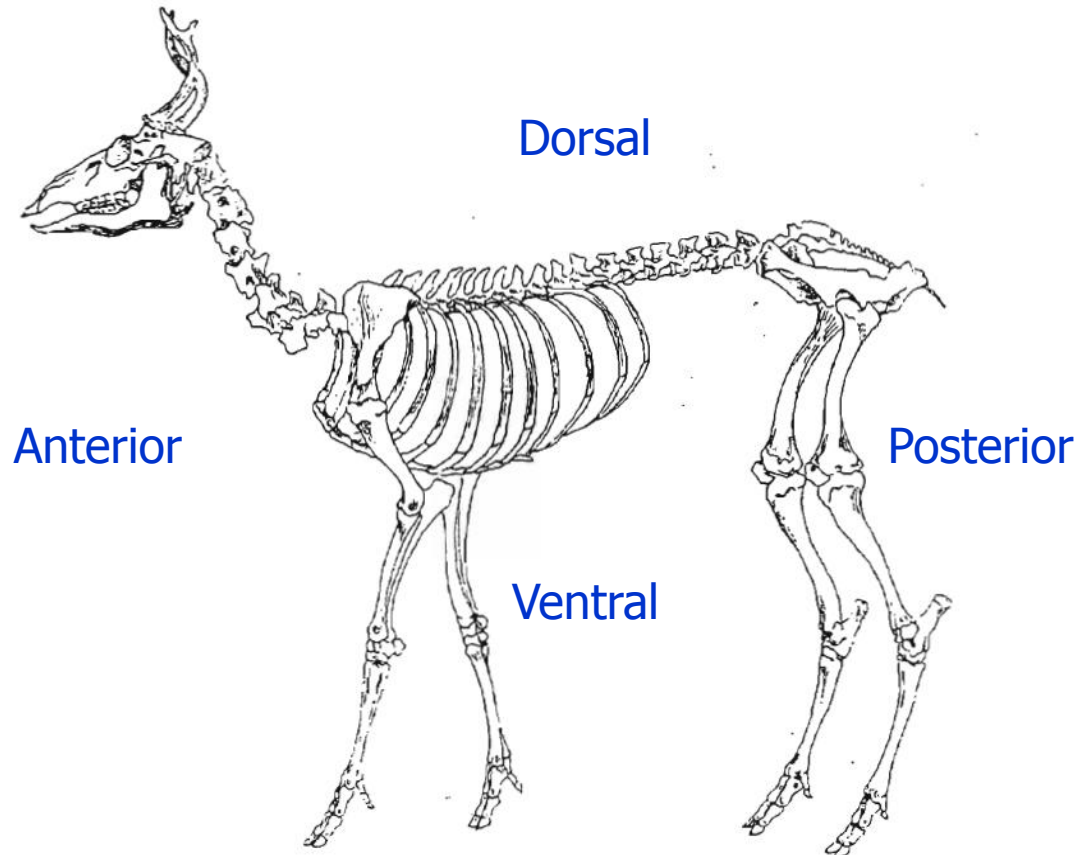
Magnified cut marks on faunal bone

By Richard Grubb <http://www.richardgrubb.com/ZooArch.htm>

Faunal Identifications



By K. White, Illinois State Museum-RCC
<http://www.museum.state.il.us/RiverWeb/landings/Ambot/prehistory/archives/images/economy/pages/pkecon5clr2.html>



- Taxon
- Element
- Side
- Portion

Taxonomic Identification



Image of Bowfin, fish, skull by Digimorph at U of Texas, Austin.
http://digimorph.org/specimens/Amia_calva/head/



Elk (left) and deer (rt) metacarpals/diaphyses. IL State Museum
Technology Archives:patech09clr2.jpg



Image of white tail deer by Digimorph at UT, Austin
http://digimorph.org/specimens/Odocoileus_virginianus/



Image of mallard duck by Digimorph at UT, Austin
http://digimorph.org/specimens/anas_platyrhynchos/skull

Represented Taxa



By K. White, Illinois State Museum-RCC
<http://www.museum.state.il.us/RiverWeb/landings/Ambot/prehistory/hives/images/economy/pages/pkecon6clr2.html>



Deer phalanges drilled for cup and pin game or for decoration.
IL State Museum **Society Archives:pascty01bclr2.jpg**



Resources on the Floodplain



Acknowledgements

Thanks to Dr. Jeremy J Wilson and his students at IUPUI for access to this faunal collection, the associated notes, and photos from field school.

Thanks to Dr. Terry Martin for use of the Illinois State Museum Research and Collection Center comparative collection and for help with identifications. Many thanks to Dr. Carol Colaninno-Meeks for assistance with identifications, advice and access to references. And finally, though most gratefully, thank you to Dr. Julie Holt for the opportunity to conduct this research as well as for her assistance at all levels of analysis, use of her comparative collection, indispensable advice and valuable critiques.