

25th season
2009-2010

arts & issues



SOUTHERN ILLINOIS UNIVERSITY
EDWARDSVILLE
COLLEGE OF ARTS & SCIENCES

Poco | Maya Angelou | Mark Holland/Autumn's Child | Steven Squyres | Carpe Diem Quartet & Peter Soave | Malashock Dance | Count Basie Orchestra | UMO Ensemble

Become an **Arts & Issues Friend** & Enjoy Special Privileges

On the ticket order form, you can designate your own level of support to ensure that *Arts & Issues* continues to offer quality programming to SIUE audiences.

Gifts of \$100 - \$249 receive

- Invitation to VIP reception prior to Maya Angelou (note: Ms. Angelou will not be attending this reception)
- Reserved section seating to the Angelou lecture
- Recognition in the event programs throughout the year

Gifts of \$250 or more receive

- Invitation to VIP reception prior to Maya Angelou (note: Ms. Angelou will not be attending this reception)
- Invitation to VIP reception and book signing with Steven Squyres prior to his lecture
- Reserved section seating for both lectures
- Recognition in the event programs throughout the year

Become an **Arts & Issues Season Subscriber** & Enjoy these Benefits

- A discount on season tickets
- Guaranteed admission to all 8 events - events often sell out
- Advanced subscription opportunities for next season

Alumni Association

Card-carrying SIUE Alumni Association members receive \$2 off each full-price general admission single ticket.

Party of 10 or more?...10% off for groups of 10 or more (\$24 per ticket). Call 618-650-5774 for more information.

♿ Wheelchair seating is available on request, and a sign interpreter is available by advance request.

NONPROFIT ORG.
U.S. POSTAGE
PAID
Permit No. 4678
St. Louis, MO

Ticket Order Form

Name _____ Address _____

City _____ State _____ ZIP _____ (____) _____
Daytime phone _____

Email _____

arts & issues 25 th Anniversary Year Season Tickets	Subscription 5-7 shows	SIUE Staff, retirees and alumni Seniors 65 or older	General single ticket	Students single ticket		Total
Poco September 26, 2009	_____x23	_____x25	_____x27	_____x13	=	\$ _____
Maya Angelou October 4, 2009	_____x23	_____x25	_____x27	_____x13	=	\$ _____
Autumn's Child November 18, 2009	_____x23	_____x25	_____x27	_____x13	=	\$ _____
Carpe Diem Quartet & Peter Soave January 30, 2010	_____x23	_____x25	_____x27	_____x13	=	\$ _____
Steven Squyres February 17, 2010	_____x23	_____x25	_____x27	_____x13	=	\$ _____
Malashock Dance April 1, 2010	_____x23	_____x25	_____x27	_____x13	=	\$ _____
Count Basie Orchestra May 1, 2010	_____x23	_____x25	_____x27	_____x13	=	\$ _____
<small>70 minute performance</small> UMO Ensemble May 15, 2010 2:00 p.m.	_____x23	_____x25	_____x27	_____x13	=	\$ _____
<small>70 minute performance</small> UMO Ensemble May 15, 2010 7:30 p.m.	_____x23	_____x25	_____x27	_____x13	=	\$ _____
Subscription to ALL 8 shows	_____x\$168 (\$21 per ticket) Circle 2:00 p.m. or 7:30 p.m. on UMO show				=	\$ _____
Service fee of \$2.00 for charge card orders only \$						
Total ticket order \$						
My contribution to <i>Arts & Issues</i> \$						
Grand Total \$						

Manner of Payment: (please circle one) MasterCard VISA Discover American Express

Card No. _____ Expiration date _____

Name on card _____ Signature _____

You may also place orders on the website at artsandissues.com. We will call you to take your credit card information and confirm your order. (A \$2.00 handling fee applies to charge orders.)

Mail to: *Arts & Issues* Tickets, SIUE Box 1608, Edwardsville, IL 62026-1608.

Questions? Call the SIUE Fine Arts Box Office at (618)-650-5774 - M-F 10 a.m.-5 p.m.
Need information fast? Go to the website at artsandissues.com.

SOUTHERN ILLINOIS UNIVERSITY
EDWARDSVILLE
COLLEGE OF ARTS & SCIENCES

arts & issues

SIUE Campus Box 1608
Edwardsville, IL 62026-1608

arts & issues official media sponsor
Intelligencer
Edwardsville
arts & issues official hotel sponsor



SOUTHERN ILLINOIS UNIVERSITY
EDWARDSVILLE
FOUNDATION

SOUTHERN ILLINOIS UNIVERSITY
EDWARDSVILLE
GRADUATE SCHOOL

Shaw Memorial Fund

The Alesfle

Ameren

The Arts and Education Council

TheBANK of Edwardsville

Conrad Press Ltd.

Horlica

Edward Chase Garvey Memorial Fund

Illinois Arts Council

Dick H. Mudge, Jr. Endowment

Richards Brick Company

Schwartzkopf Printing

SIUE University Center



Poco

Saturday, September 26, 2009, 7:30 p.m.
Meridian Ballroom, Morris University Center
sponsored by the SIUE Credit Union

The memories linger and the legacy of the Mississippi River Festival continues as Poco returns to campus to kick off the 25th season of SIUE's *Arts & Issues*. The group's Sept. 26 appearance will mark the legendary country rock band's fourth visit to campus; Poco appeared at the MRF in 1975 and 1979, and

also played at the MRF pre-season festival in 1972. This special *Arts & Issues* appearance also coincides with the 40th anniversary of the MRF's inaugural season. Join us for a magical, nostalgia-filled evening with one of rock's most influential bands.

Maya Angelou

"An Afternoon with Maya Angelou"

Sunday, October 4, 2009, 2:00 p.m.
Meridian Ballroom, Morris University Center
sponsored by the SIUE Graduate School and the SIUE Foundation

Hailed as one of the premier voices of contemporary poetry, Maya Angelou is also considered a remarkable Renaissance woman with many facets—poet, educator, historian, best-selling author, actress, playwright, civil rights activist, producer and director. As a world traveler, Angelou spreads her legendary wisdom to captivated audiences who continue to enjoy the vigor and sheer beauty of her words and lyrics. Within the rhythm of her poetry and the elegance of her prose lies Angelou's unique power to connect with those she meets.



Among her many honors are three Grammy Awards, along with nominations for a Tony Award, an Emmy Award and the Pulitzer Prize.



The Carpe Diem Quartet & Peter Soave perform The Music of Aldemaro Romero

Saturday, January 30, 2010, 7:30 p.m.
Dunham Hall Theater LIMITED SEATING

The Carpe Diem String Quartet, whose recent CD was selected for the 2009 Grammy Awards Entry List in four categories, is a musical group that has captured the imagination of audiences around the world. Peter Soave is an internationally acclaimed bandoneon and concert accordionist. Together, they will perform the music of the late Aldemaro Romero.

Aldemaro Romero was an international recording star with RCA Victor and one of the foremost Latin music orchestra leaders in the world. In America, Romero's

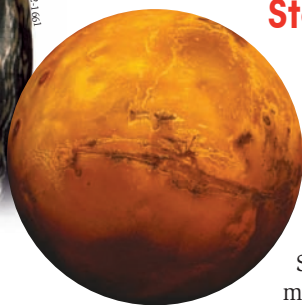
reputation as an arranger-conductor led him to collaborate with popular orchestras and singers such as Dean Martin, big band bandleader Stan Kenton and popular Latin percussionist Tito Puente. Romero was credited with creating a new form of Venezuelan music, known as Onda Nueva (New Wave) that was influenced by Brazilian Bossa Nova rhythms. Aldemaro Romero was also the father of SIUE's new dean of the College of Arts and Sciences, Aldemaro Romero Jr., who will conduct several pieces in this concert along with a special video presentation.

Arts & Issues and The William C. Shaw Lecture Series present

Steven Squyres

"Roving Mars: Spirit, Opportunity and the Exploration of the Red Planet"

Wednesday, February 17, 2010, 7:30 p.m.
Meridian Ballroom, Morris University Center
sponsored by the Shaw Memorial Fund

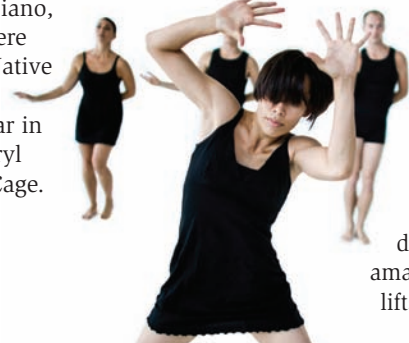


Steven Squyres is the man responsible for taking us to the Red Planet and igniting a new firestorm of interest in space exploration. "Spirit and Opportunity" have always been prominent in the life of Squyres, best known as the face and voice of NASA's spectacular mission to Mars using two high-tech robotic rovers. Spearheading

a team of 3,000 and a budget of \$800 million, the acclaimed scientist and principal investigator of NASA's Mars Exploration Program will detail how he turned what seemed like an improbable dream into a reality. With a compelling voice and never before seen photos, he will discuss the risks taken, the mistakes made and how the project's goals were ultimately achieved.

Malashock Dance

Thursday, April 1, 2010, 7:30 p.m.
Dunham Hall Theater LIMITED SEATING



Dynamic, emotionally charged choreography is Malashock Dance's signature. The magnificently trained dancers never cease to amaze with their leaps, lifts, powerful sustained

movement and artistry. Founded by Emmy-winning choreographer John Malashock in 1988 after years of touring with top companies such as Twyla Tharp Dance, this premier California dance company will charm with its intimate, playful pieces that express the intricacies of human relationships. Michael Mizerany, a product of the SIUE dance program, is the group's associate artistic director.



Arts & Issues and the SIUE Jazz Festival present

The Legendary Count Basie Orchestra

Directed by Bill Hughes

Saturday, May 1, 2010, 7:30 p.m.
Meridian Ballroom, Morris University Center

The legendary big band jazz of the Count Basie Orchestra takes center stage for the *Arts & Issues* series as part of the Annual SIUE Jazz Festival. Widely regarded as one of the most important jazz bandleaders of his day, William "Count" Basie came out of the Kansas City Swing scene in the mid-1930s and assembled a sound that became an anthem for a generation. The group has won every musical award imaginable, including 17 Grammys, and has been named to every respected jazz poll in the world at least once. Some members are

new, yet the majority of sound still swings from musicians handpicked by Count Basie himself.

The SIUE Jazz Festival, presented by the SIUE Department of Music, is a non-competitive, educational event that celebrates jazz innovators. In addition to jam sessions and clinics, performances will include high school and middle school bands plus an appearance by the SIUE Concert Jazz Band.

Arts & Issues and the SIUE Xfest present

UMO Ensemble

"Zen Tales"

Saturday, May 15, 2010, 2:00 p.m. and 7:30 p.m.
Dunham Hall Theater LIMITED SEATING

In the past 23 years, UMO Ensemble has become known as one of the most innovative, compelling and critically acclaimed performance companies based in the Pacific Northwest. The ensemble has performed throughout the United States, Canada and Europe. As its mission, the UMO Ensemble is dedicated to "providing awe, challenge and inspiration" to theater audiences. UMO will not disappoint with its irreverent approach to Zen: share the experience of the red nose monk clowns tackling ancient Buddhist, Zen and Sufi stories through mask, puppetry, live music and laughter.

and theater artists from around the nation will join with the UMO Ensemble to conduct a series of workshops, master classes and performances as part of this festival.



During this entire weekend (May 12-15) the SIUE Department of Theater and Dance, in conjunction with the *Arts & Issues* series, will expand its offerings into the summer and present **SIUE Xfest**: A Festival of Theatrical Experimentation. For four days and nights, several experimental theaters



Autumn's Child featuring Mark Holland

Wednesday, November 18, 2009, 7:30 p.m.
Meridian Ballroom, Morris University Center

Autumn's Child will create a special night of music just for *Arts & Issues*. The group will perform a unique hybrid of world music, jazz, classical and folk music—all referred to by Mark as "Global

Chamber Music"—featuring the haunting beauty of his Native American flute. The instrumentation for the group's *Arts & Issues* appearance will include cello, piano, guitar, percussion, harp and tabla. There will also be a performance by noted Native American hoop dancer Lowery Begay. Some of the musicians who will appear in this concert have performed with Sheryl Crow, Paul Winter and the late John Cage.