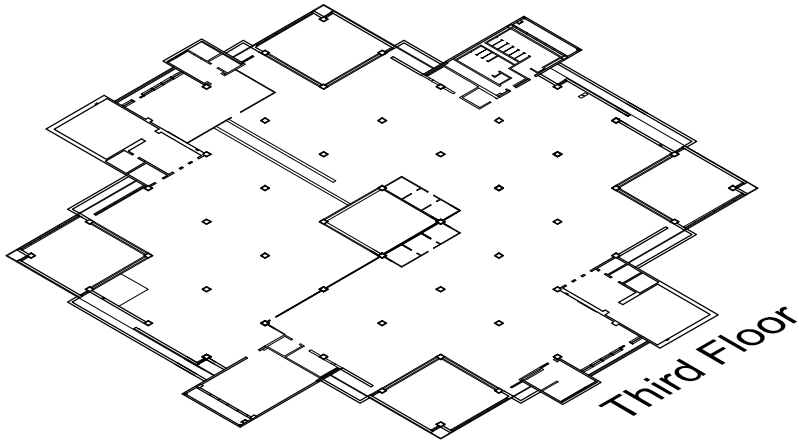
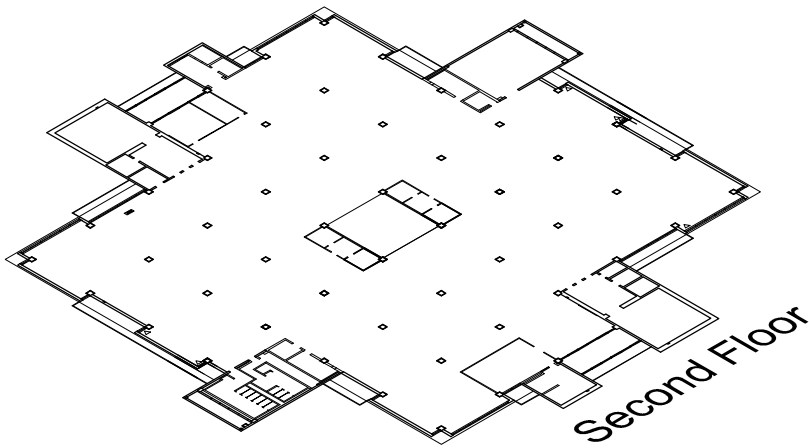


# LOVEJOY LIBRARY



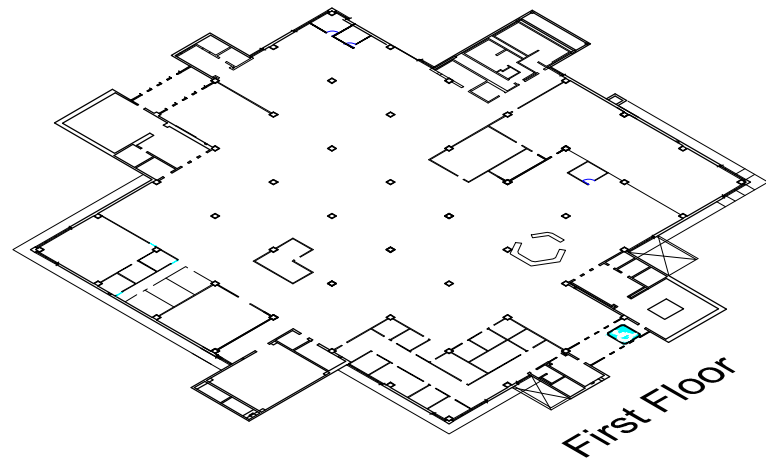
## Third Floor

Conference Room  
Technical Services  
United States Government Documents Stacks



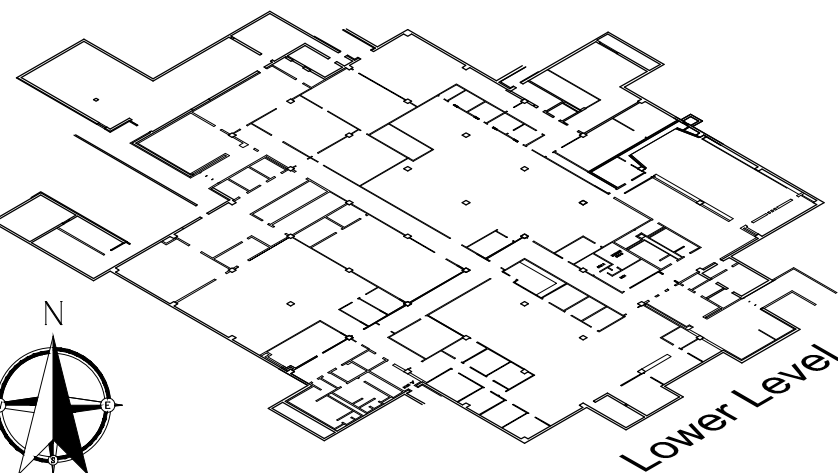
## Second Floor

Conference Room



## First Floor

Access Services

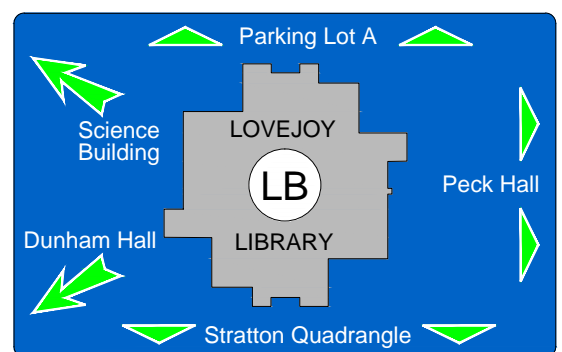


## Lower Level

Campus Services  
Good Buy Book Shop  
Information Technology Services  
John C. Abbott Auditorium  
Receiving  
Technical Services  
University Archives & Special Collections

## EMERGENCY

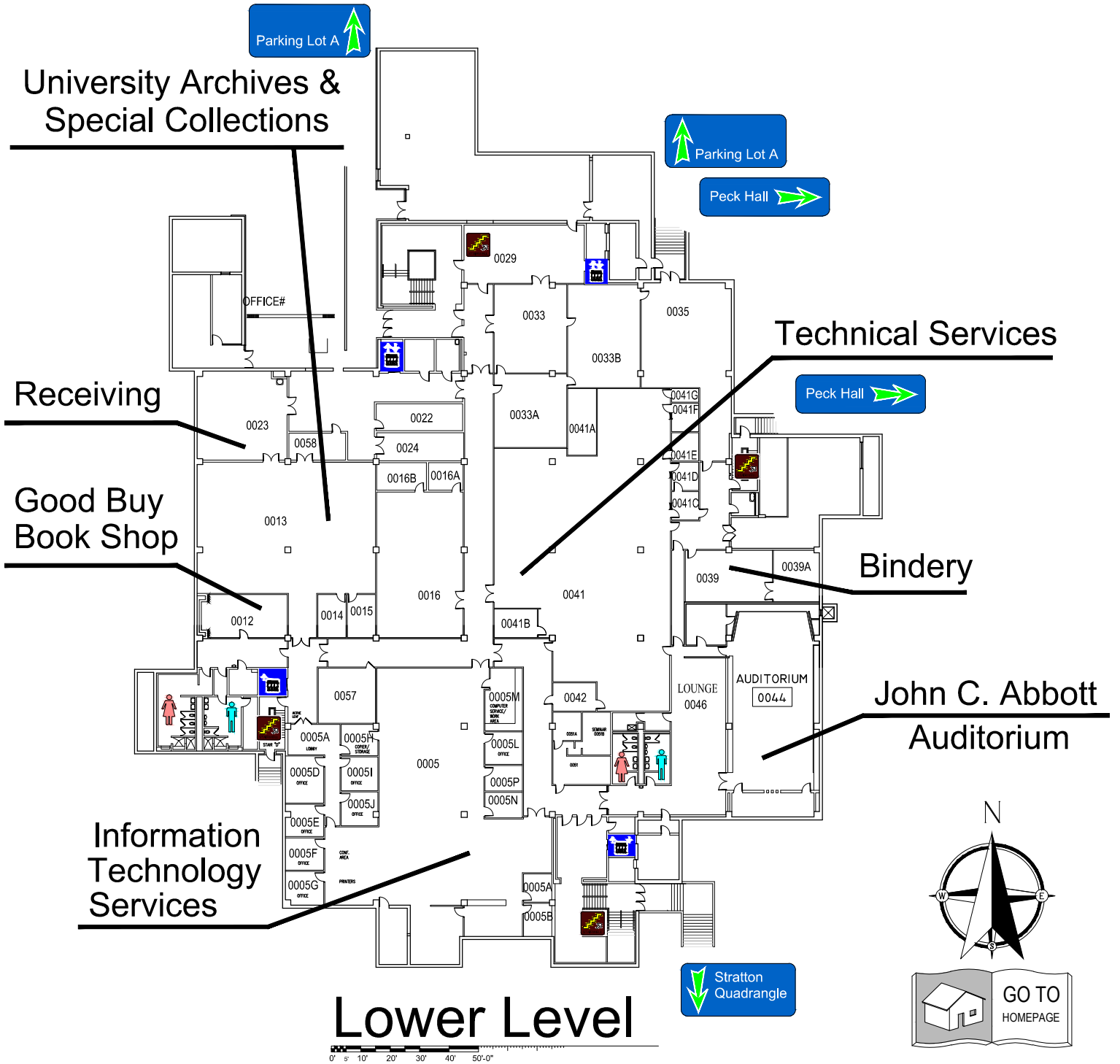
STORM SHELTERS  
&  
EXITS



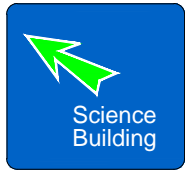
Send Comments on Floor Plan to: [donande@siue.edu](mailto:donande@siue.edu)

# Lovejoy Library

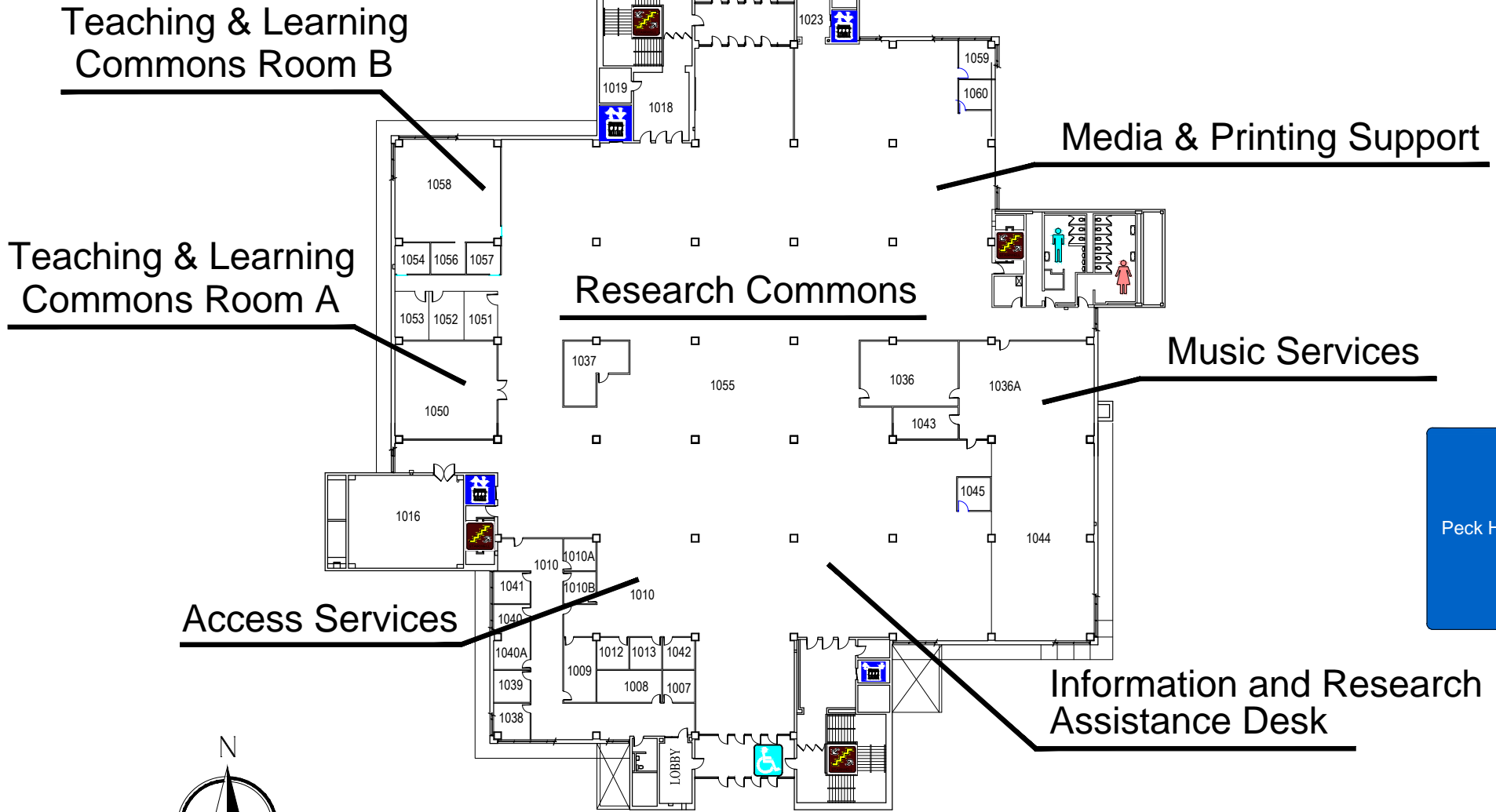
Send Comments on Floor Plan to:  
[donande@siue.edu](mailto:donande@siue.edu)



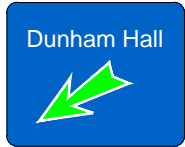
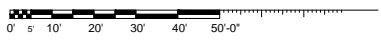
# Lovejoy Library



Send Comments on Floor Plan to:  
[donande@siue.edu](mailto:donande@siue.edu)

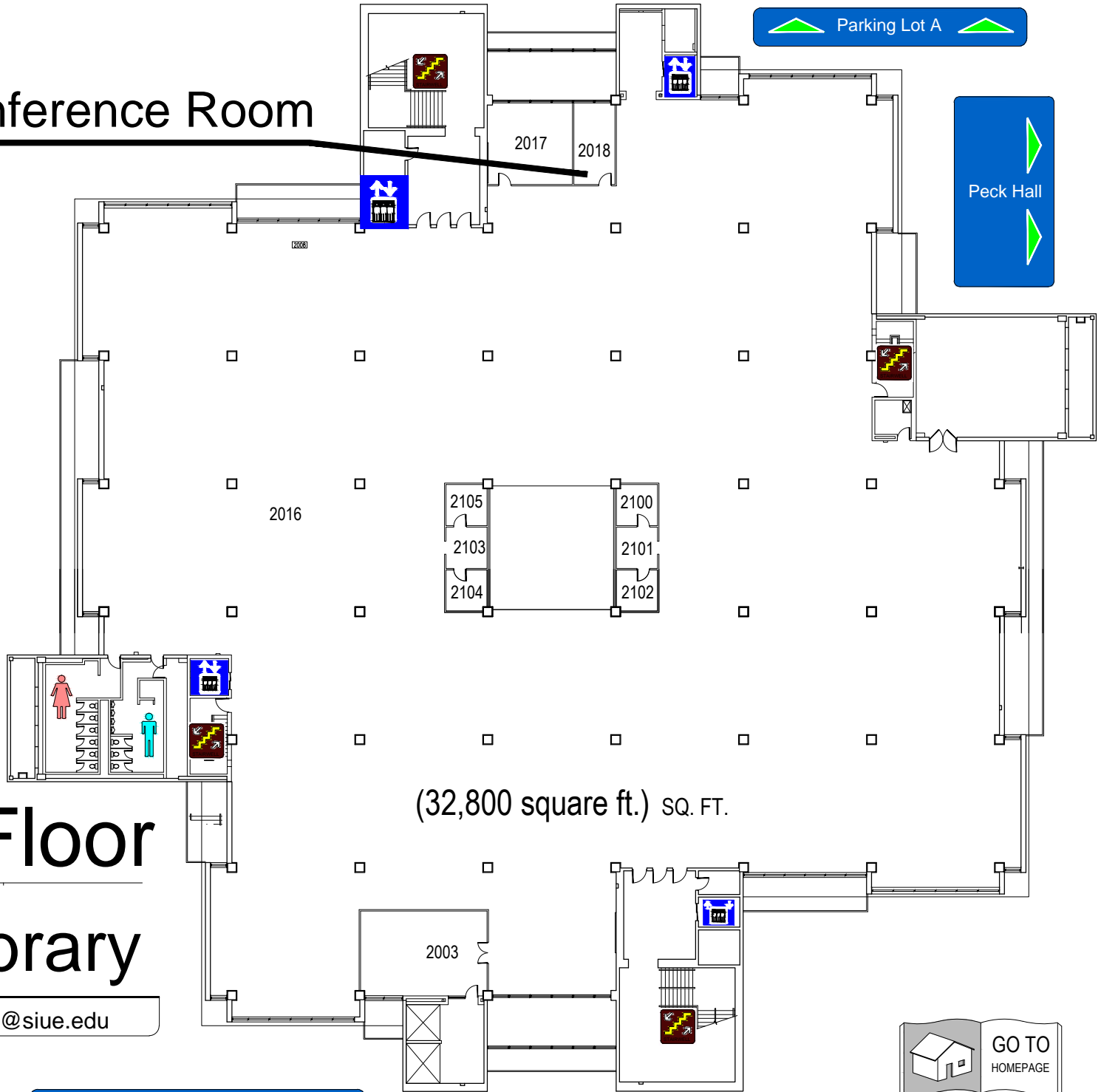


## First Floor



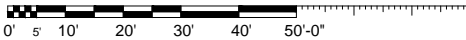


# Conference Room



(32,800 square ft.) SQ. FT.

# Second Floor



# Lovejoy Library

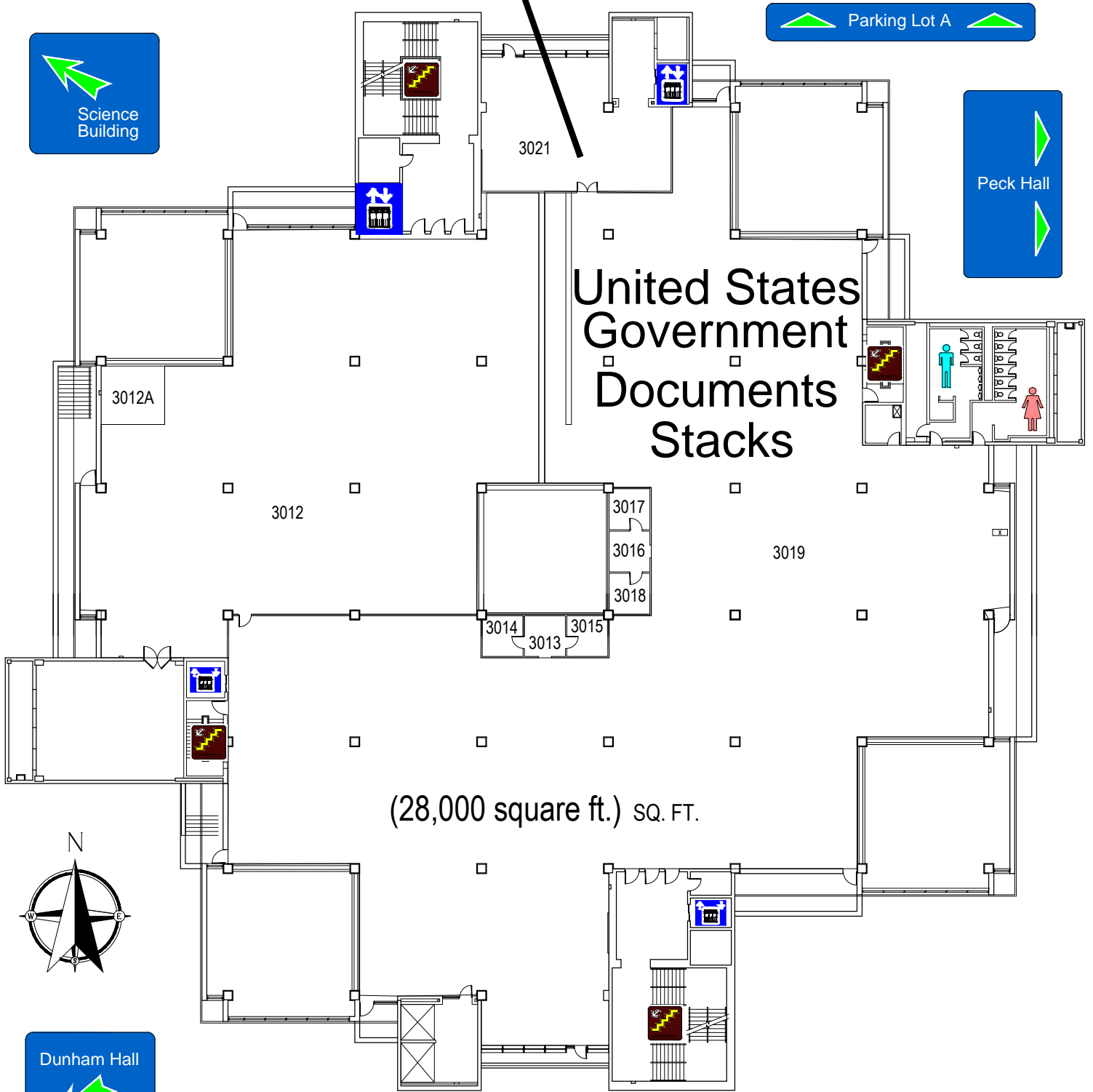
Send Comments on Floor Plan to:  
[donande@siue.edu](mailto:donande@siue.edu)



# Lovejoy Library

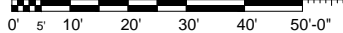
## Conference Room

Send Comments on Floor Plan to:  
[donande@siue.edu](mailto:donande@siue.edu)

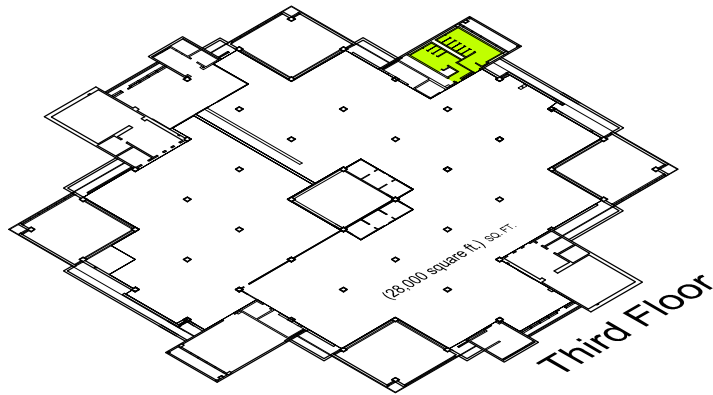


## Third Floor

Stratton Quadrangle



# LOVEJOY LIBRARY



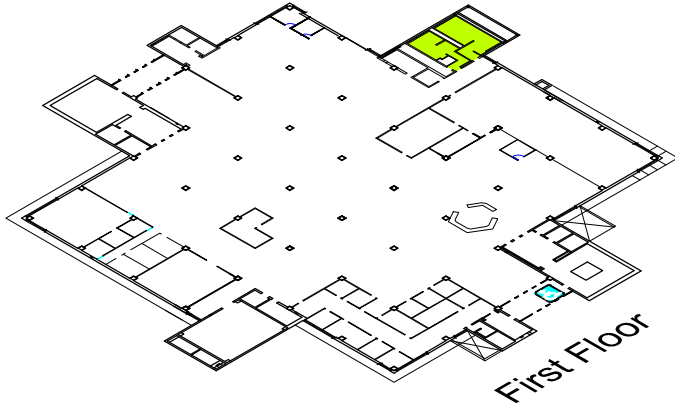
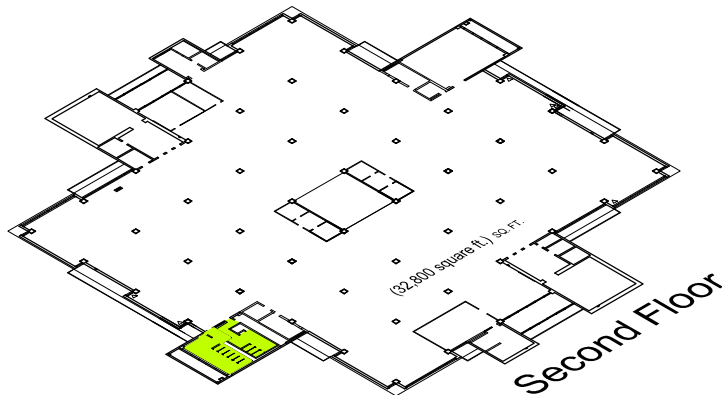
## EMERGENCY STORM SHELTERS

Third Floor

Second Floor

First Floor

Lower Level



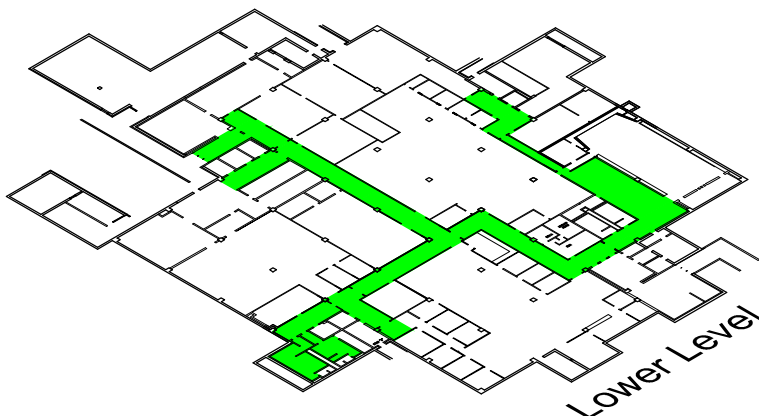
## EMERGENCY EXITS

Third Floor

Second Floor

First Floor

Lower Level



Send Comments on Floor Plan to: [donande@siue.edu](mailto:donande@siue.edu)

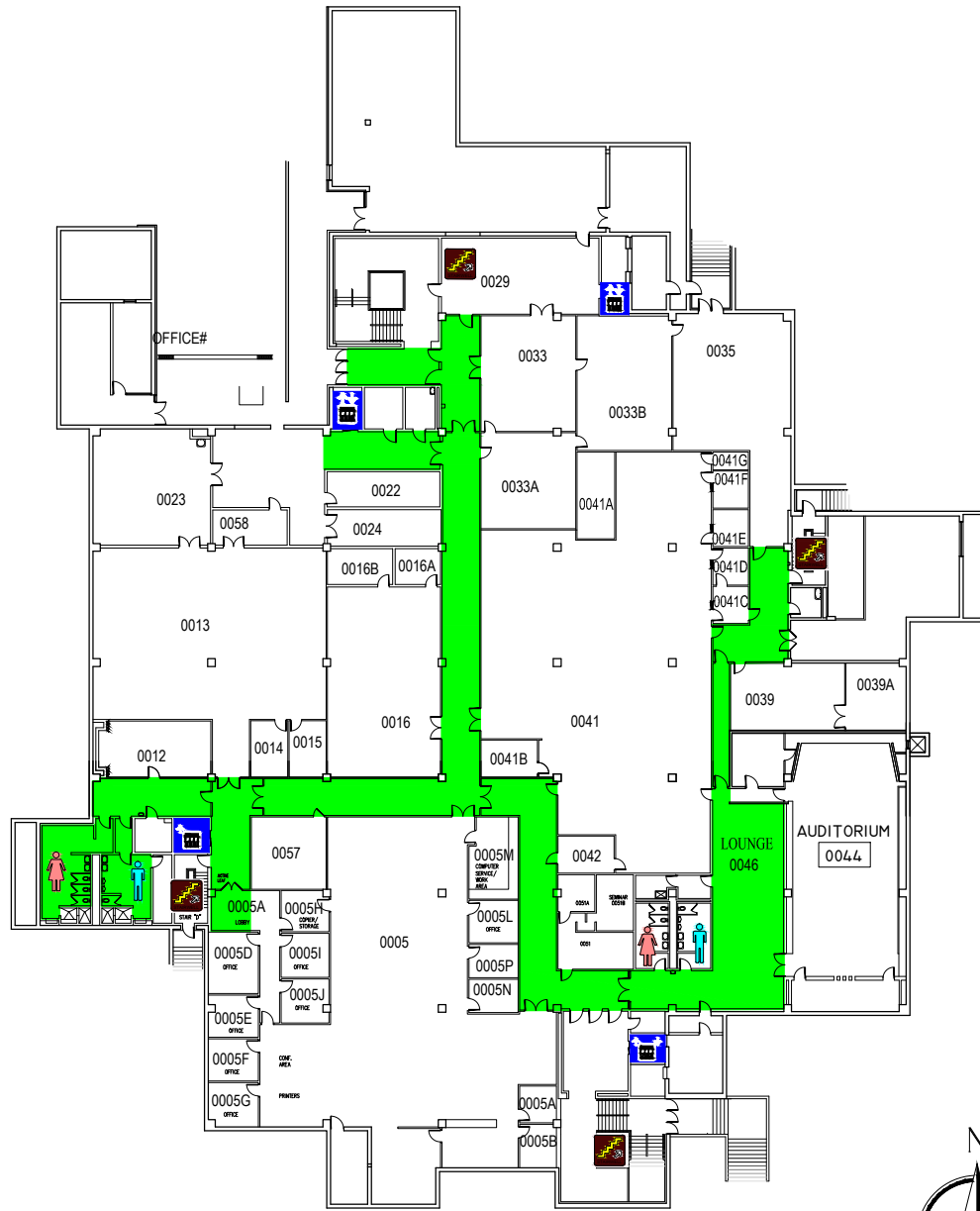


# EMERGENCY STORM SHELTERS

In event of a Tornado Warning everyone should go to a

**PRIMARY STORM SHELTERS**

located here on the lower level

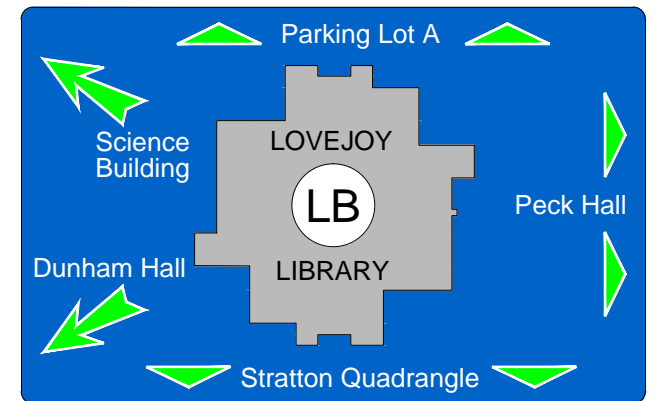


Lower Level

0 5 10 20 30 40 50'-0"



# LOVEJOY LIBRARY

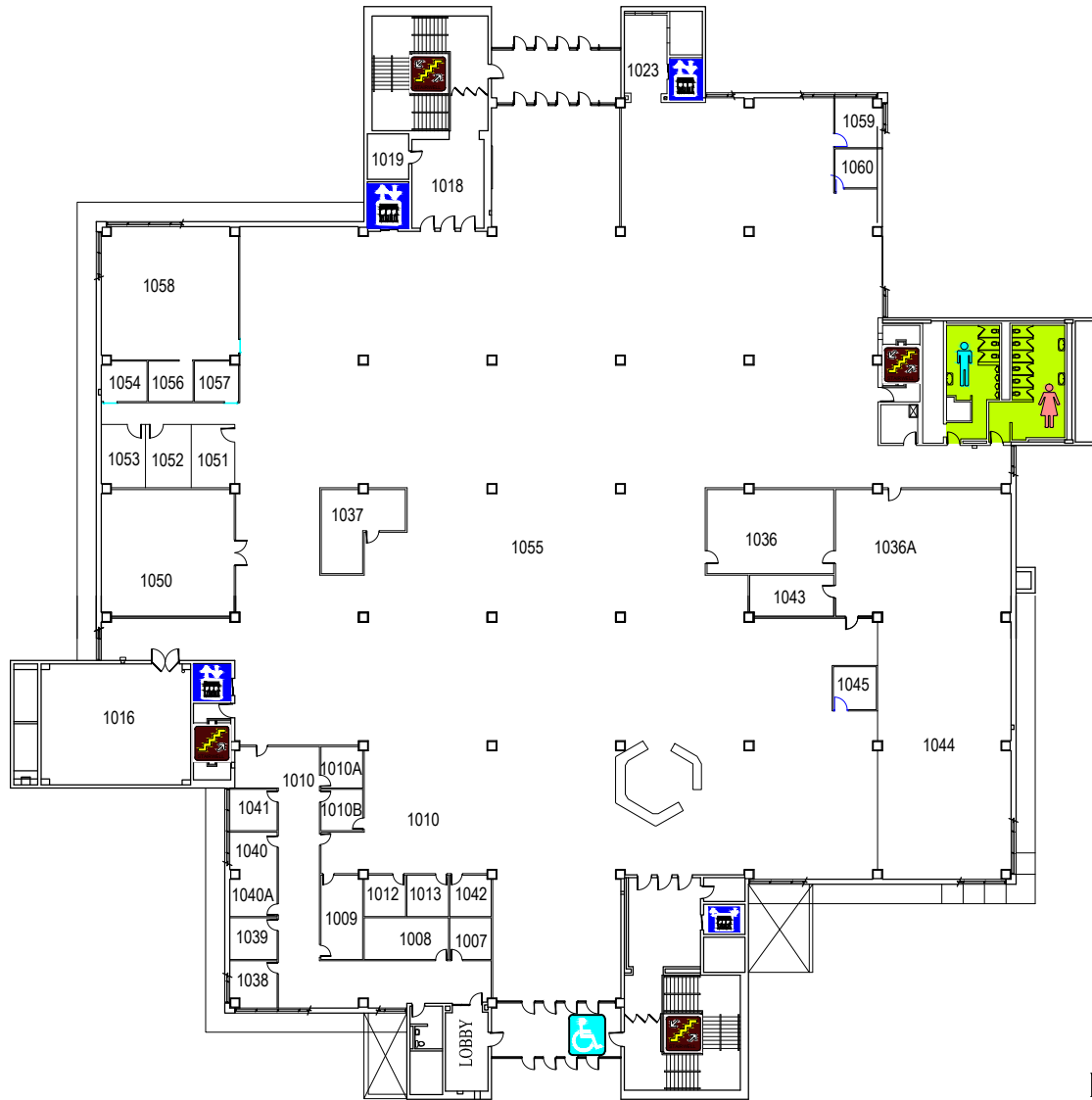


# EMERGENCY STORM SHELTERS

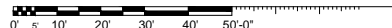
In event of a Tornado Warning everyone should go to a Lower Level **PRIMARY SHELTER**

In event you can not get to a Primary Shelter go to a **SECONDARY STORM SHELTER**

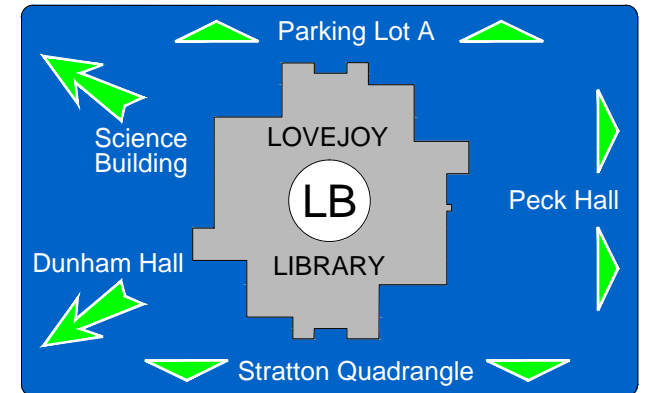
located on 1st, 2nd, & 3rd floors



First Floor



# LOVEJOY LIBRARY



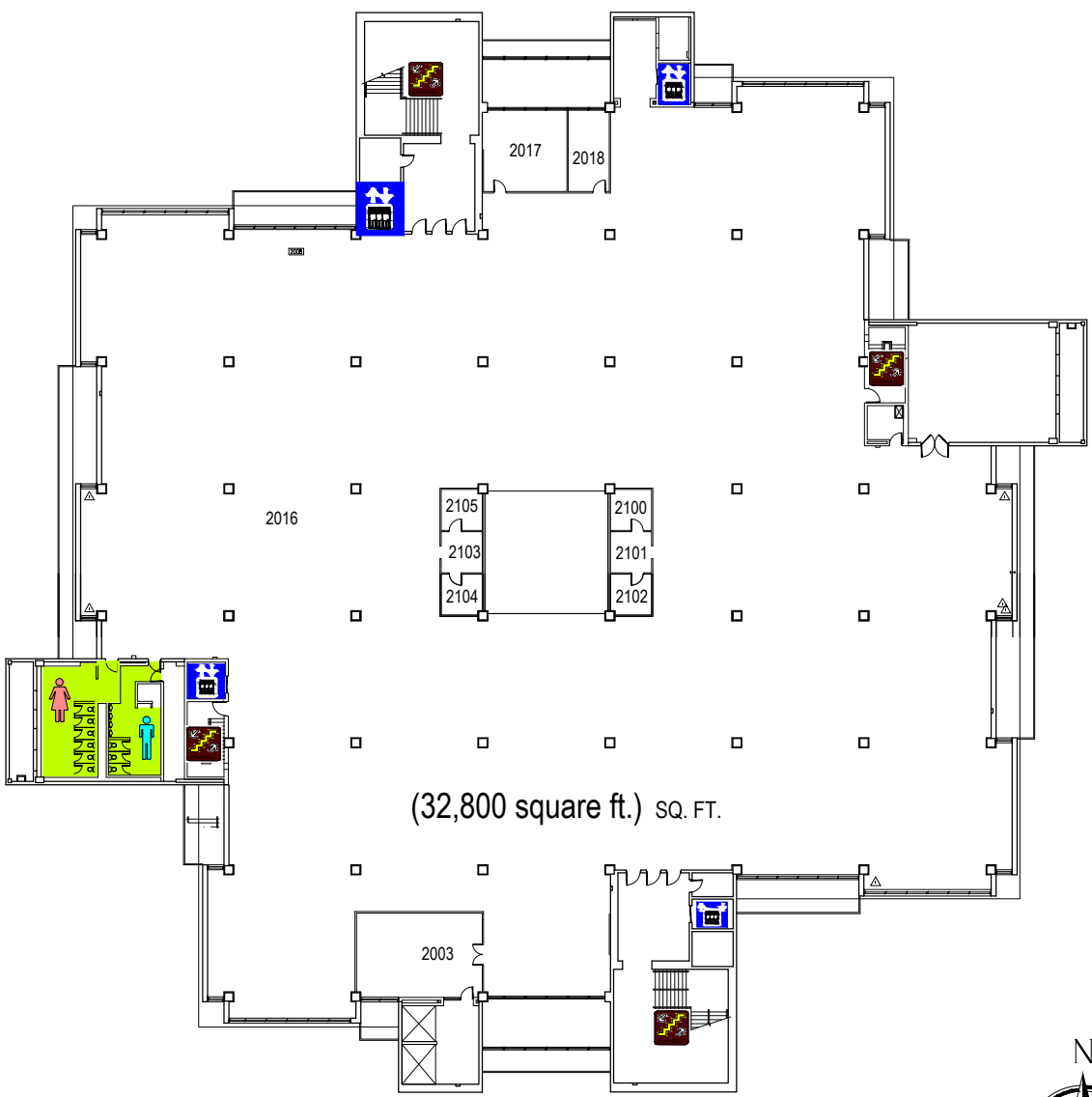


# EMERGENCY STORM SHELTERS

In event of a Tornado Warning everyone should go to a Lower Level **PRIMARY SHELTER**

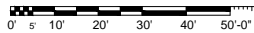
In event you can not get to a Primary Shelter go to a **SECONDARY STORM SHELTER**

located on 1st, 2nd, & 3rd floors

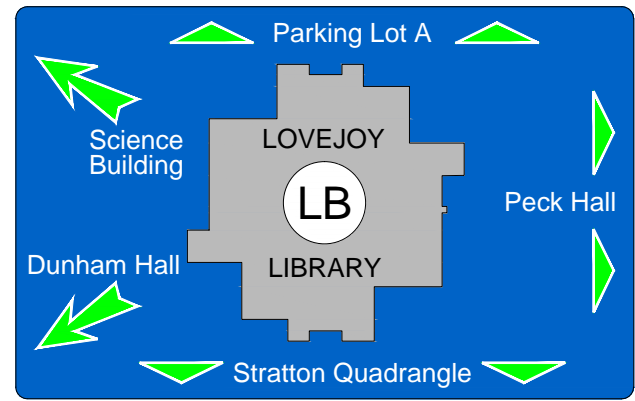


(32,800 square ft.) SQ. FT.

## Second Floor



# LOVEJOY LIBRARY

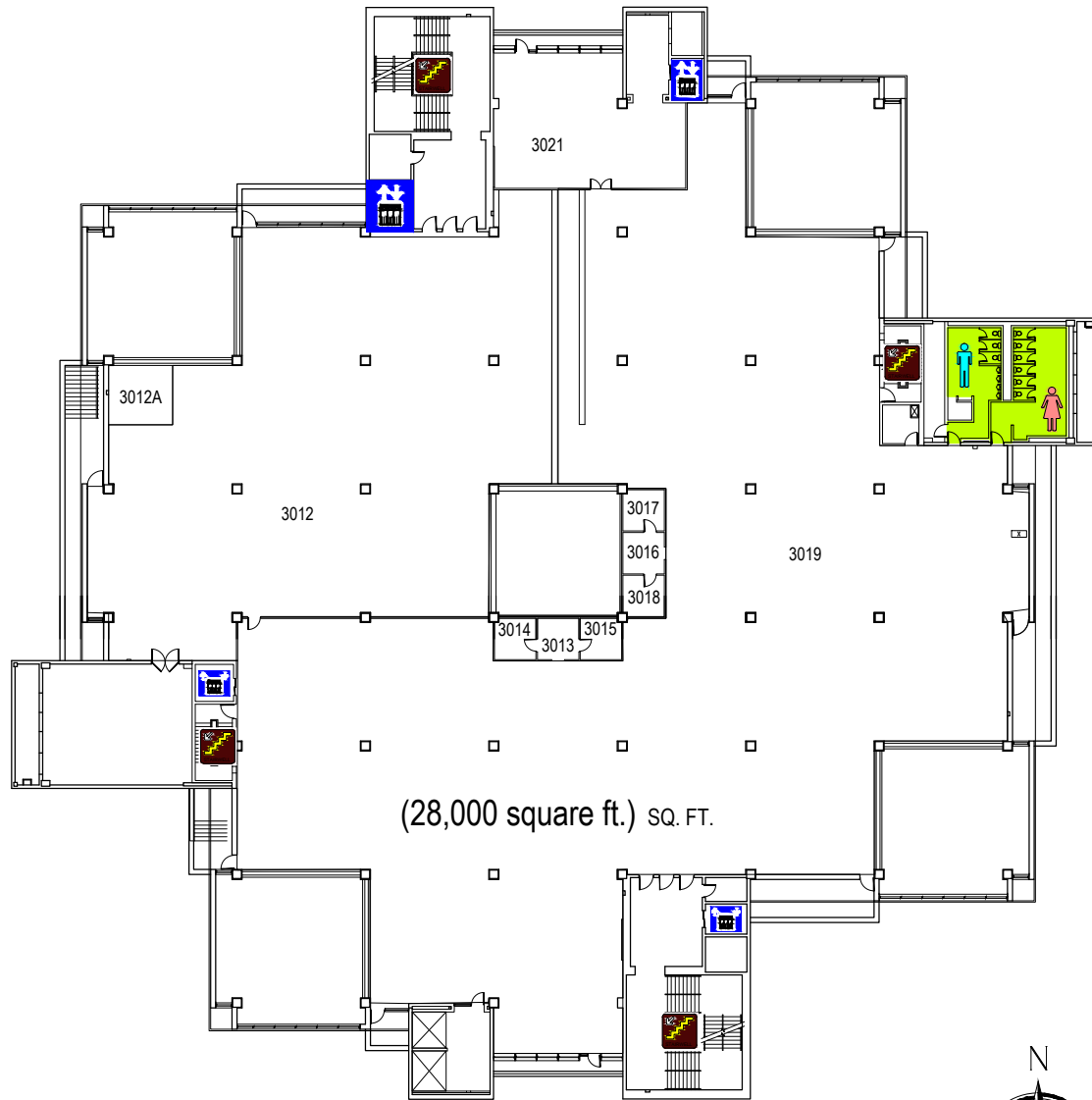


# EMERGENCY STORM SHELTERS

In event of a Tornado Warning everyone should go to a Lower Level **PRIMARY SHELTER**

In event you can not get to a Primary Shelter go to a **SECONDARY STORM SHELTER**

located on 1st, 2nd, & 3rd floors

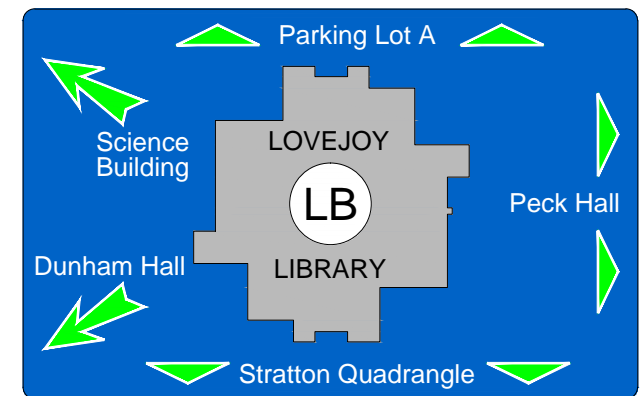


## Third Floor

0' 5' 10' 20' 30' 40' 50'-0"



# LOVEJOY LIBRARY



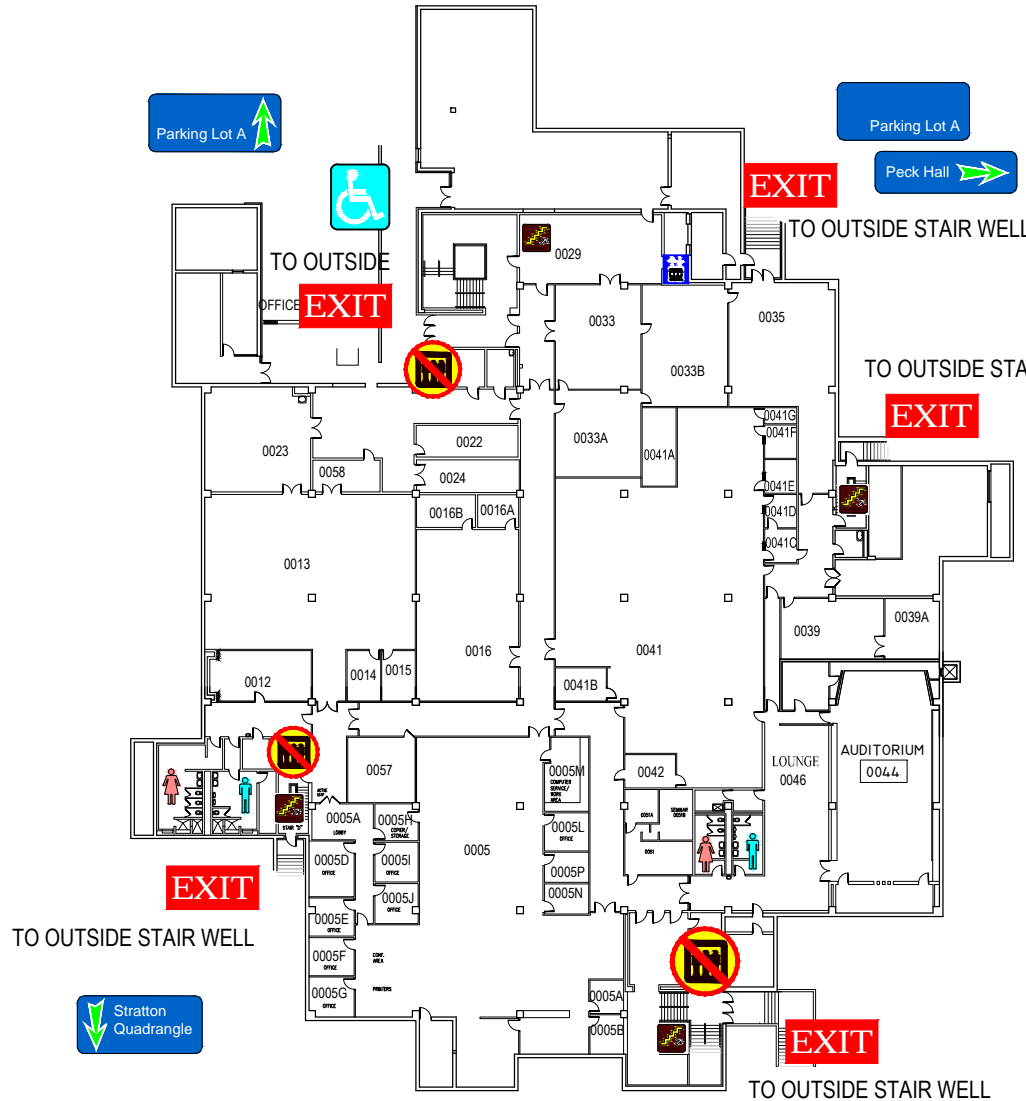
# EMERGENCY EXIT PLAN

**EXIT** IN CASE OF EMERGENCY USE MARKED EXITS **EXIT**

 DO NOT USE ELEVATORS 

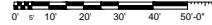


WHEELCHAIR USERS ARE TO GO TO A **EXIT** AND IF POSSIBLE AVOID EXITS ( TO OUTSIDE STAIR WELL)



# LOVEJOY LIBRARY

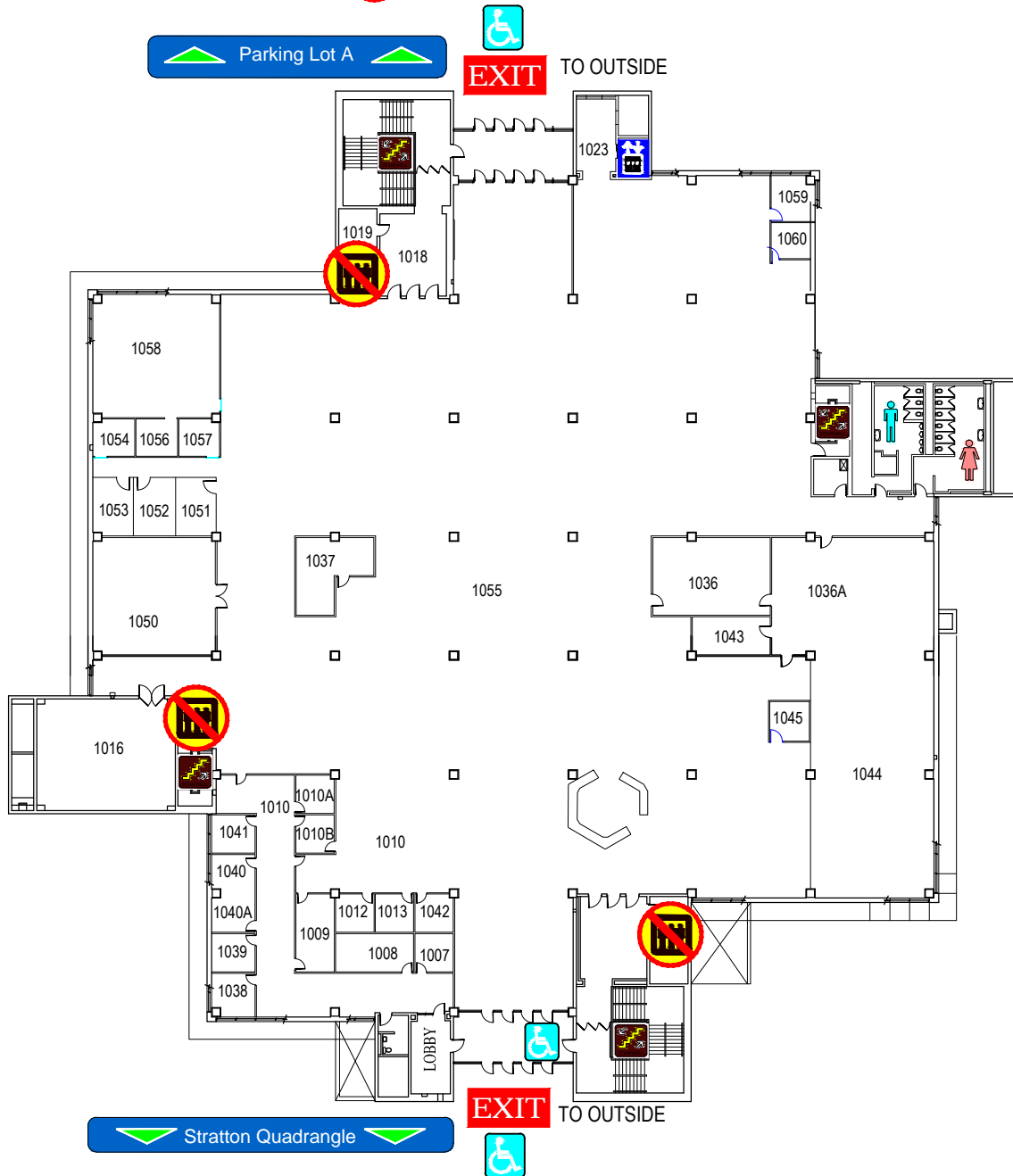
Lower Level



# EMERGENCY EXIT PLAN

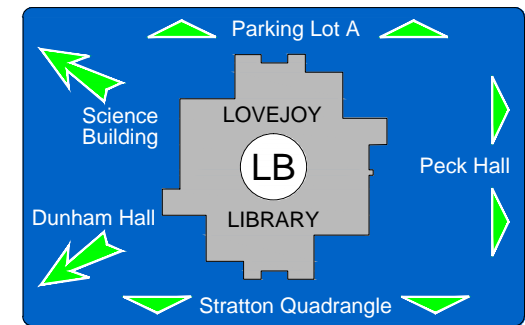
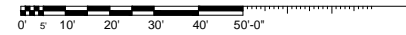
**EXIT** IN CASE OF EMERGENCY USE MARKED EXITS **EXIT**

 DO NOT USE ELEVATORS 



## LOVEJOY LIBRARY

### First Floor



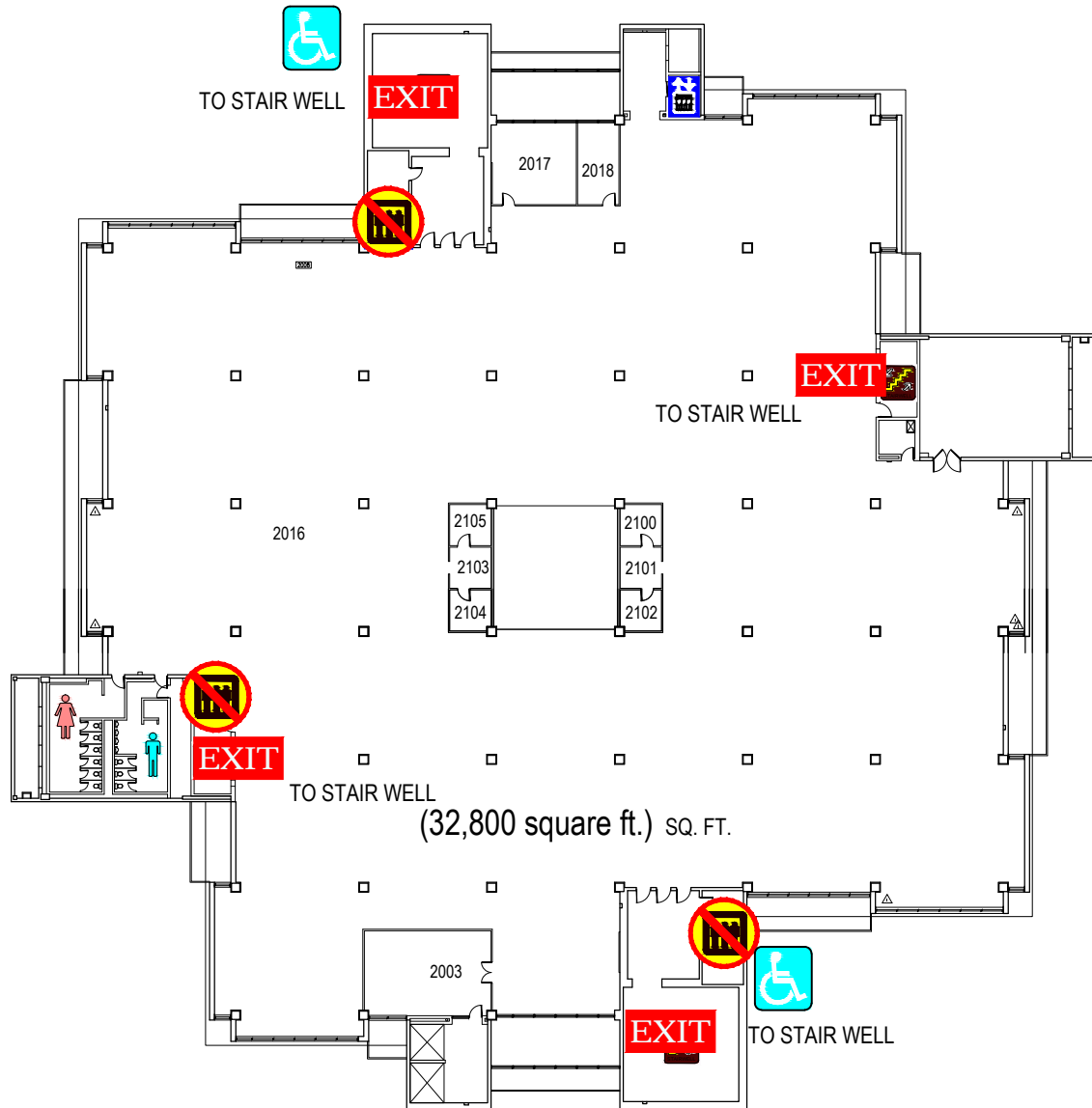
# EMERGENCY EXIT PLAN

**EXIT** IN CASE OF EMERGENCY USE MARKED EXITS **EXIT**

 DO NOT USE ELEVATORS 

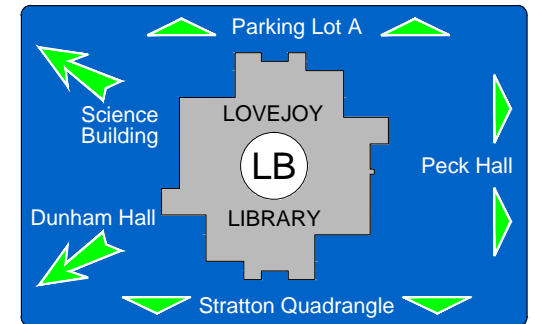


WHEELCHAIR USERS ARE TO GO INTO STAIR WELLS **EXIT** AND WAIT FOR EMERGENCY PERSONNEL.





## LOVEJOY LIBRARY

### Second Floor

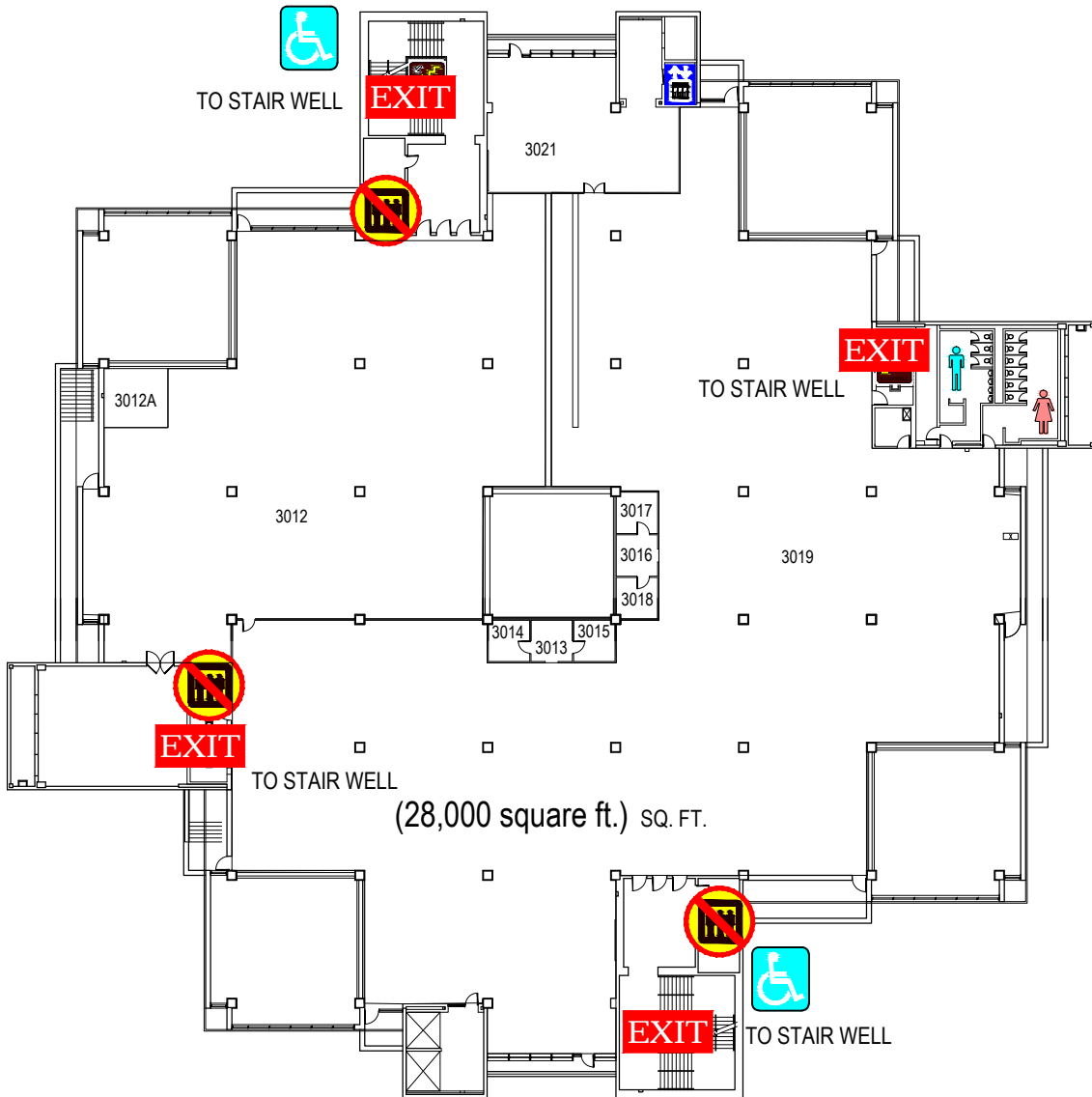


# EMERGENCY EXIT PLAN

**EXIT** IN CASE OF EMERGENCY USE MARKED EXITS **EXIT**

 DO NOT USE ELEVATORS 

 WHEELCHAIR USERS ARE TO GO INTO STAIR WELLS **EXIT** AND WAIT FOR EMERGENCY PERSONNEL. 



## LOVEJOY LIBRARY

### Third Floor

