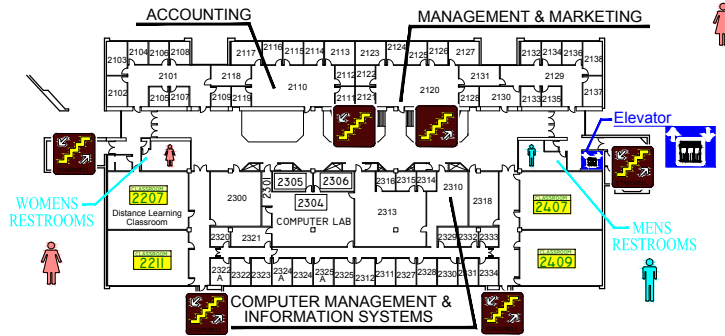
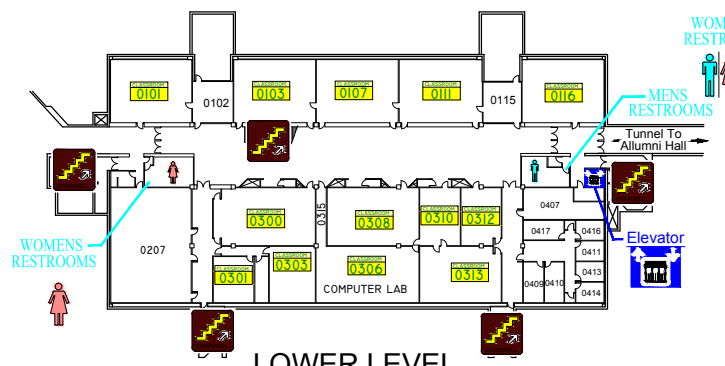


# FOUNDERS HALL

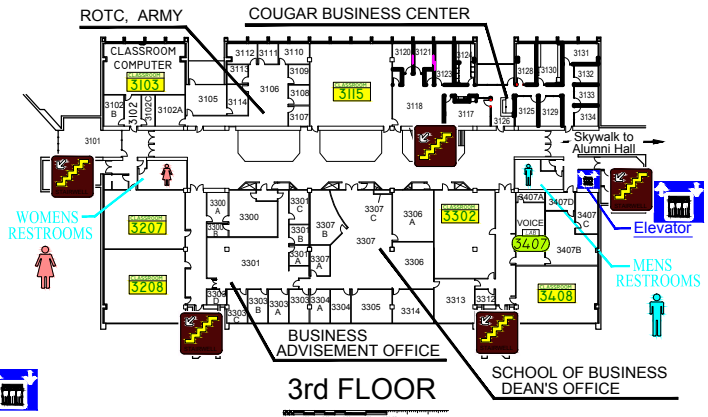
donande@siue.edu



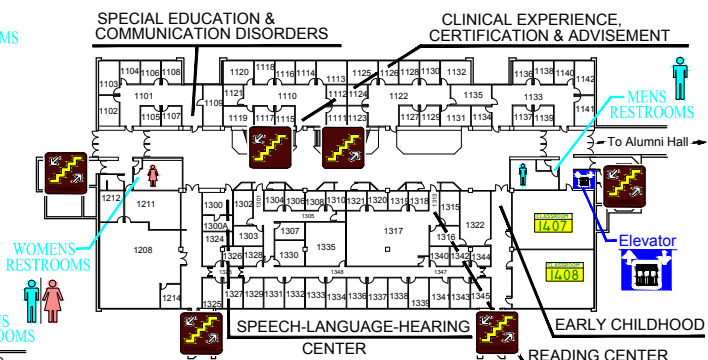
2nd FLOOR



LOWER LEVEL



3rd FLOOR



1st FLOOR

# DIRECTORY

## LOWER LEVEL

CLASSROOMS

**1st FLOOR**

CLINICAL EXPERIENCE, CERTIFICATION & ADVISEMENT 1110

EARLY CHILDHOOD EDUCATION 1131

READING CENTER 1313-1321

SPECIAL EDUCATION & COMMUNICATION DISORDERS 1131

SPEECH-LANGUAGE-HEARING CENTER 1131

## 2nd FLOOR

ACCOUNTING 2110

COMPUTER MANAGEMENT & INFORMATION SYSTEMS 2310

MANAGEMENT & MARKETING 2120

## 3rd FLOOR

ROTC, ARMY 3106

**SCHOOL OF BUSINESS**

ADVISEMENT OFFICE 3301

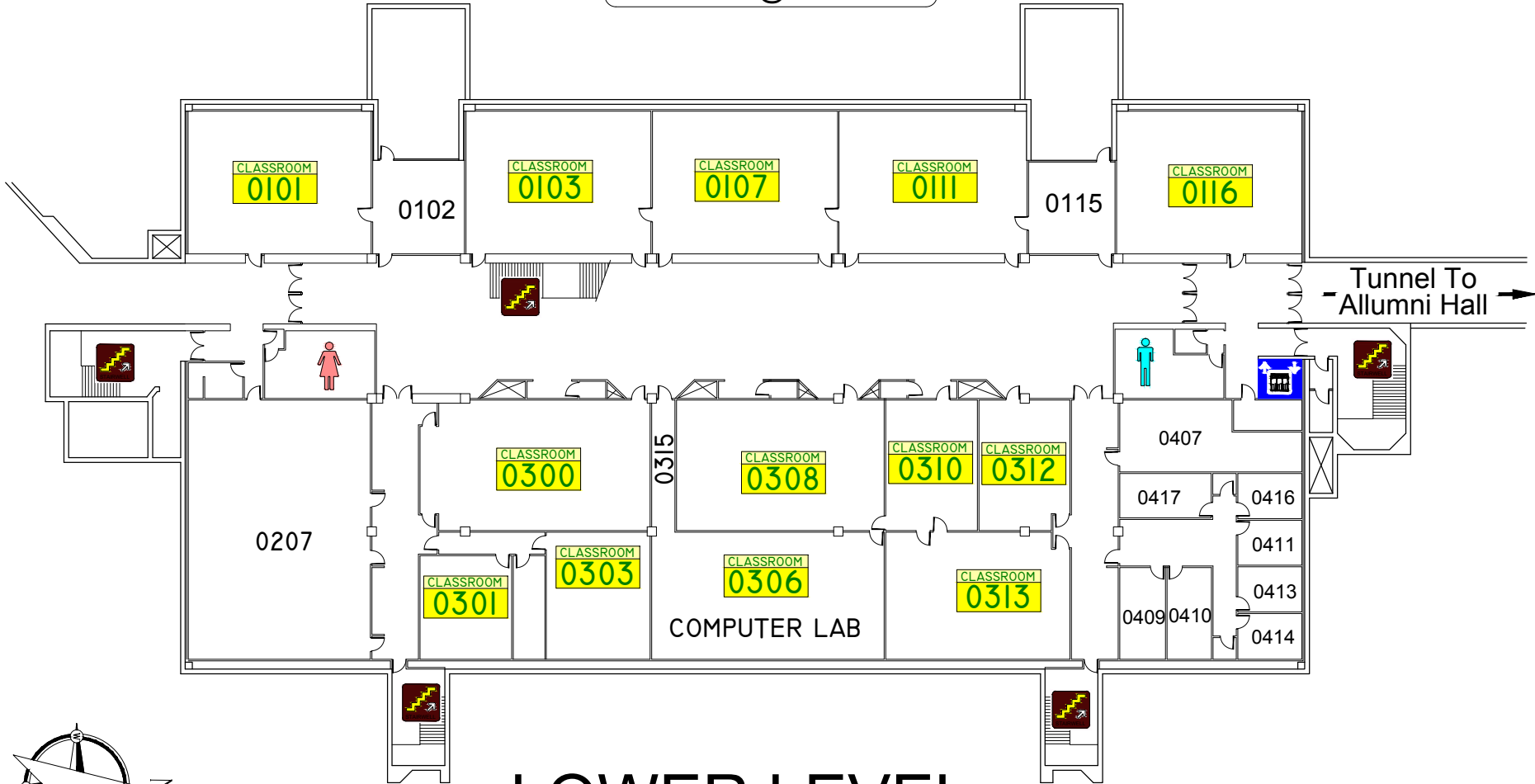
DEAN'S OFFICE 3307

COUGAR BUSINESS CENTER 3126



# FOUNDERS HALL

Send Comments on Floor Plan to:  
[donande@siue.edu](mailto:donande@siue.edu)



## LOWER LEVEL

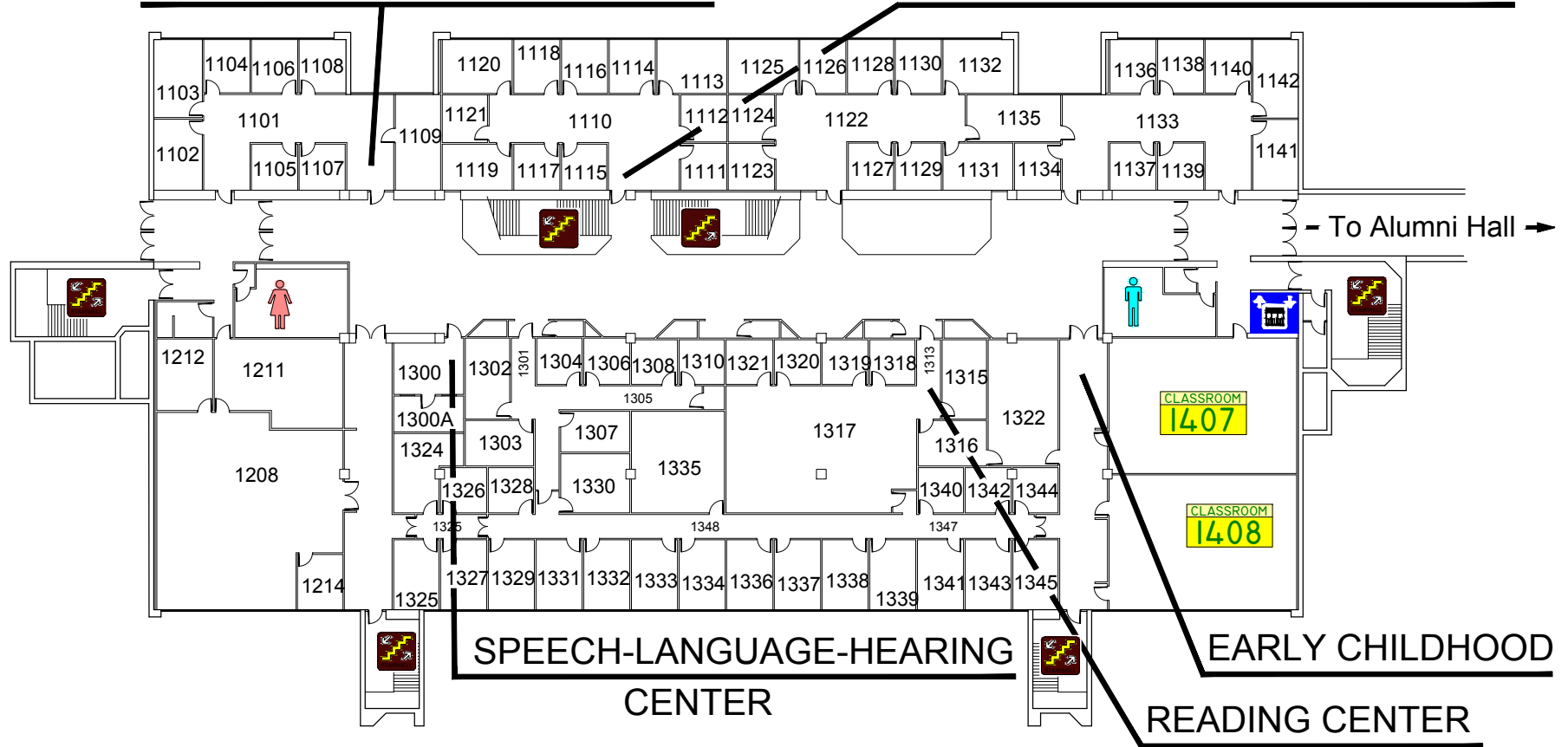
0' 5' 10' 20' 30' 40' 50'-0"

# FOUNDERS HALL

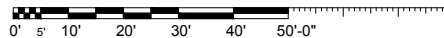
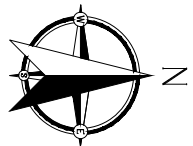
Send Comments on Floor Plan to:  
[donande@siue.edu](mailto:donande@siue.edu)

**SPECIAL EDUCATION &  
COMMUNICATION DISORDERS**

**CLINICAL EXPERIENCE,  
CERTIFICATION & ADVISEMENT**



## 1st FLOOR

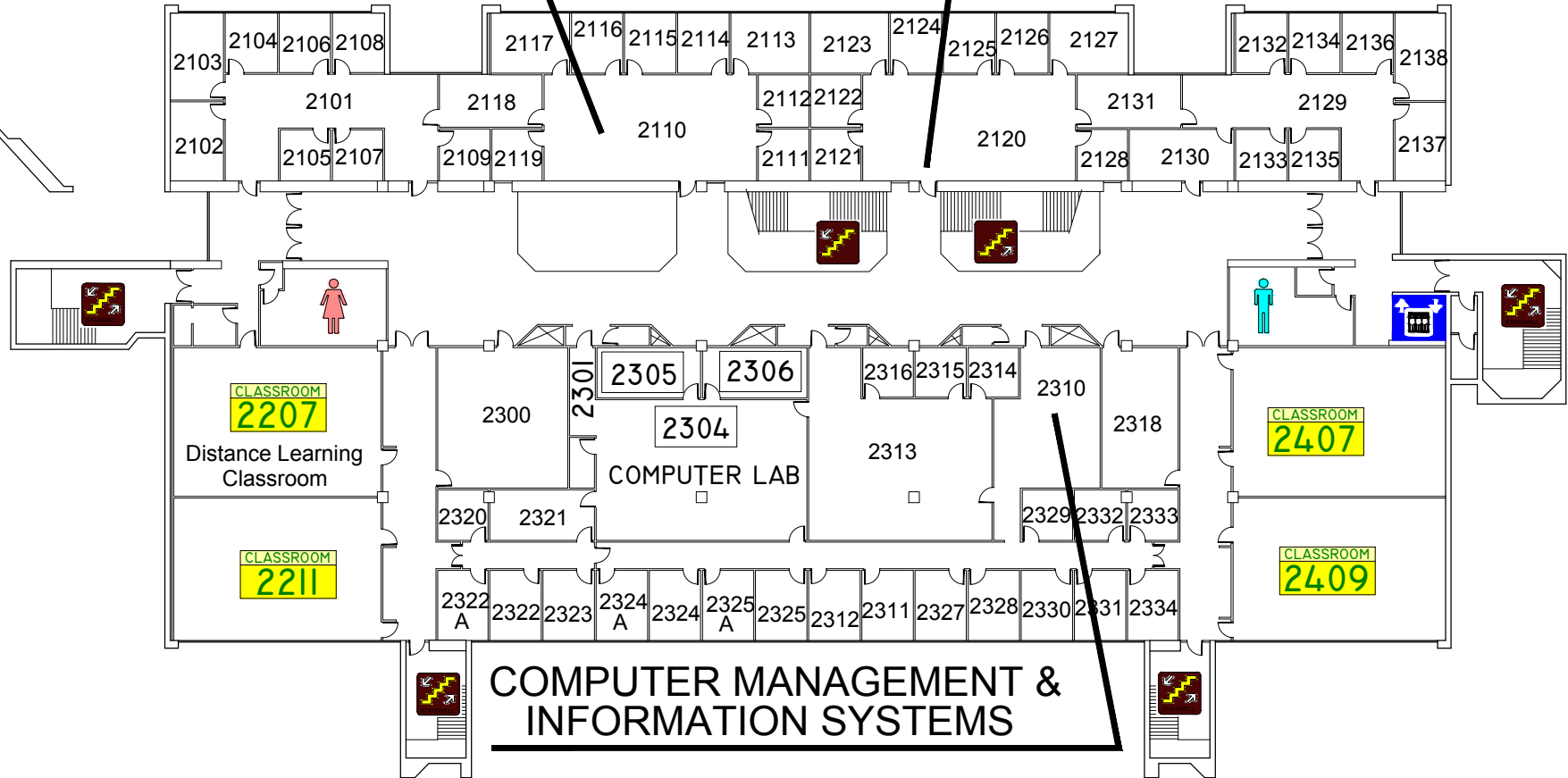


# FOUNDERS HALL

Send Comments on Floor Plan to:  
[donande@siue.edu](mailto:donande@siue.edu)

## ACCOUNTING

## MANAGEMENT & MARKETING



## 2nd FLOOR

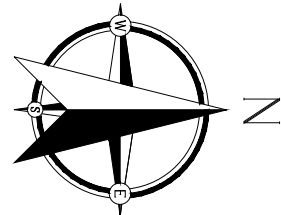
0' 5' 10' 20' 30' 40' 50'-0"

# FOUNDERS HALL

Send Comments on Floor Plan to:  
[donande@siue.edu](mailto:donande@siue.edu)

ROTC, ARMY

COUGAR BUSINESS CENTER



## 3rd FLOOR

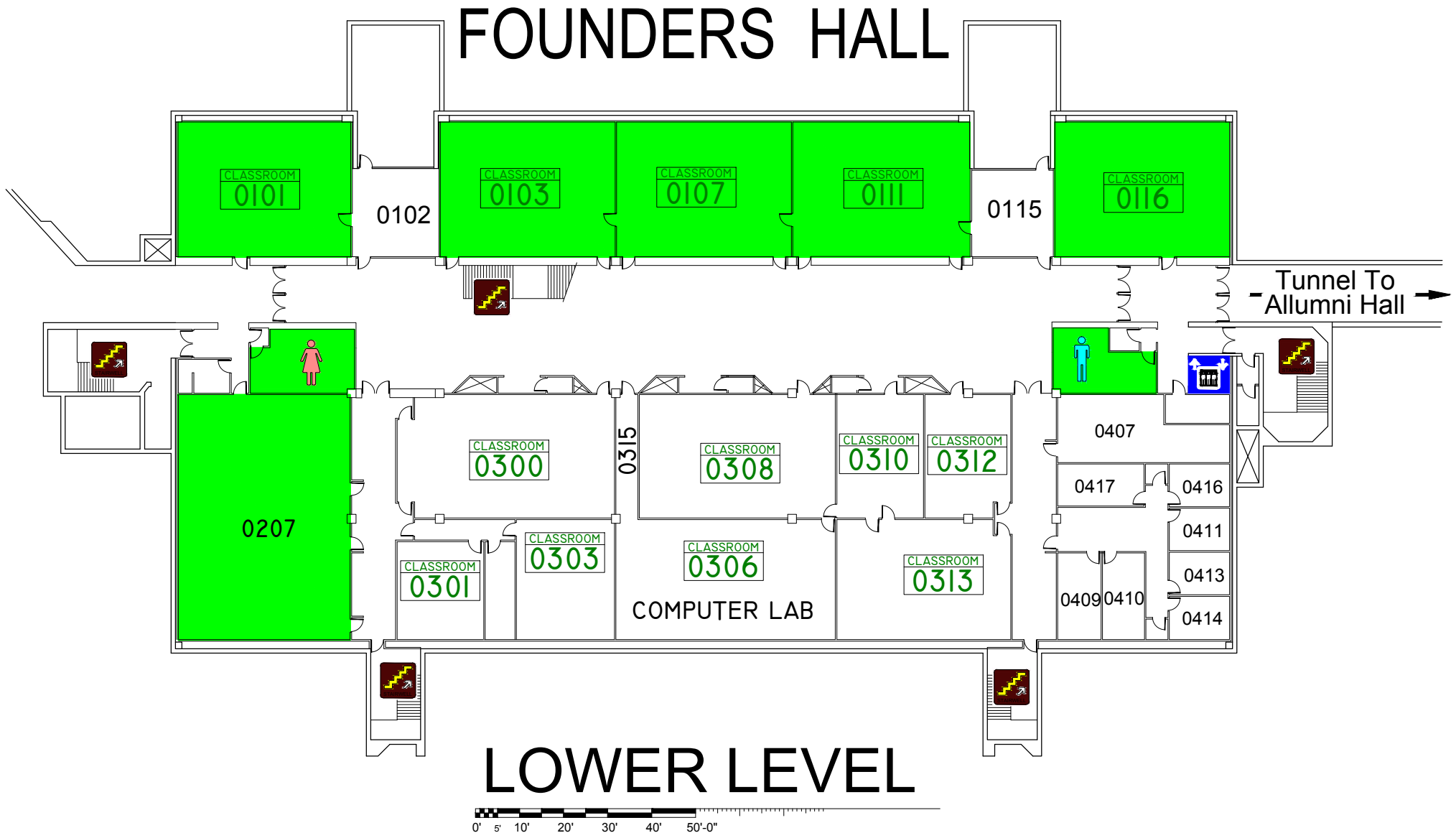


SCHOOL OF BUSINESS  
DEAN'S OFFICE

# EMERGENCY STORM SHELTERS

In event of a Tornado Warning everyone should go to a Lower Level **Primary Storm Shelter**

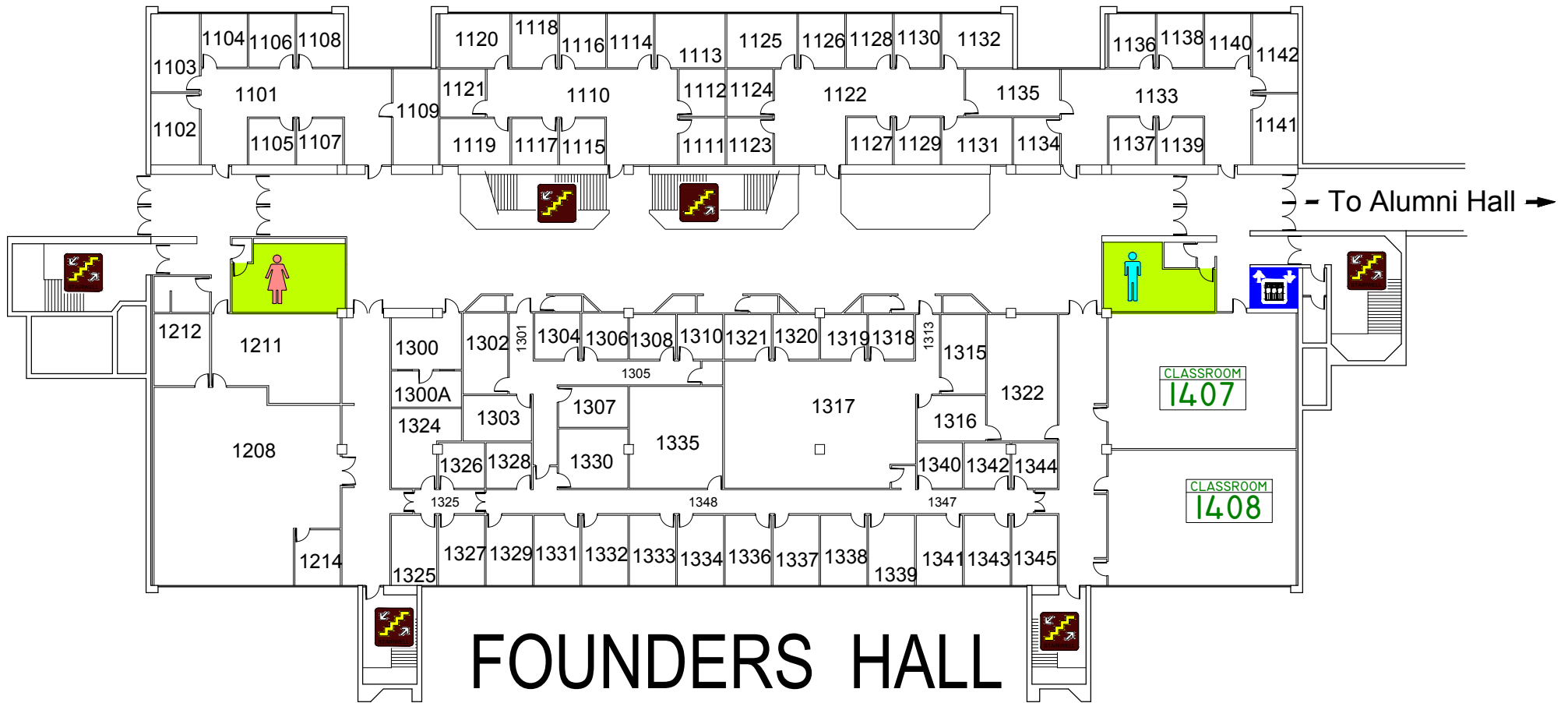
In event you can not get to a Primary Shelter go to a **Secondary Storm Shelter**  
on 1st, 2nd, or 3rd Floor



# EMERGENCY STORM SHELTERS

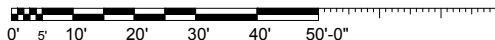
In event of a Tornado Warning everyone should go to a Lower Level **Primary Storm Shelter**

In event you can not get to a Primary Shelter go to a **Secondary Storm Shelter**



FOUNDERS HALL

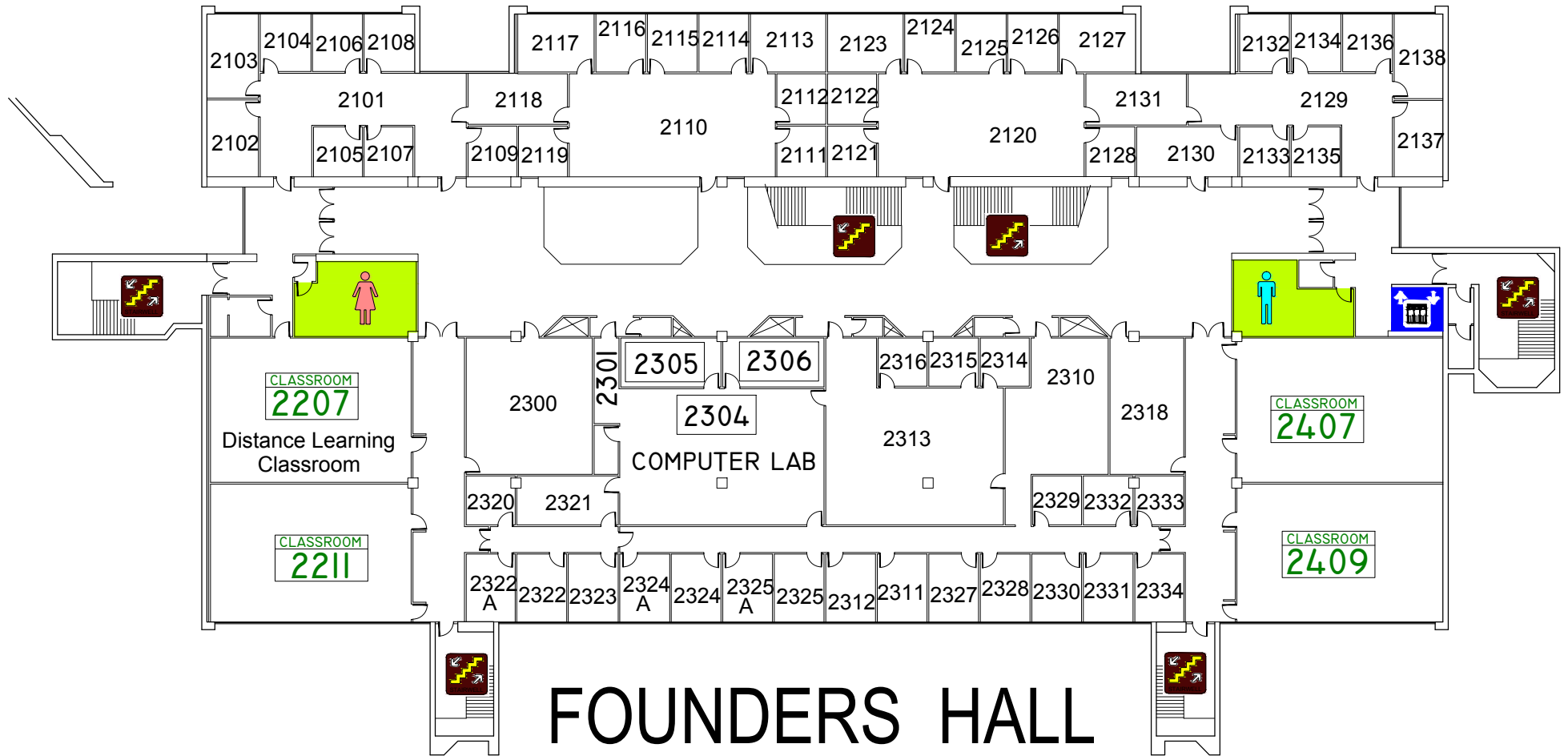
1st FLOOR



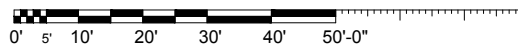
# EMERGENCY STORM SHELTERS

In event of a Tornado Warning everyone should go to a Lower Level **Primary Storm Shelter**

In event you can not get to a Primary Shelter go to a **Secondary Storm Shelter**



**FOUNDERS HALL**  
**2nd FLOOR**

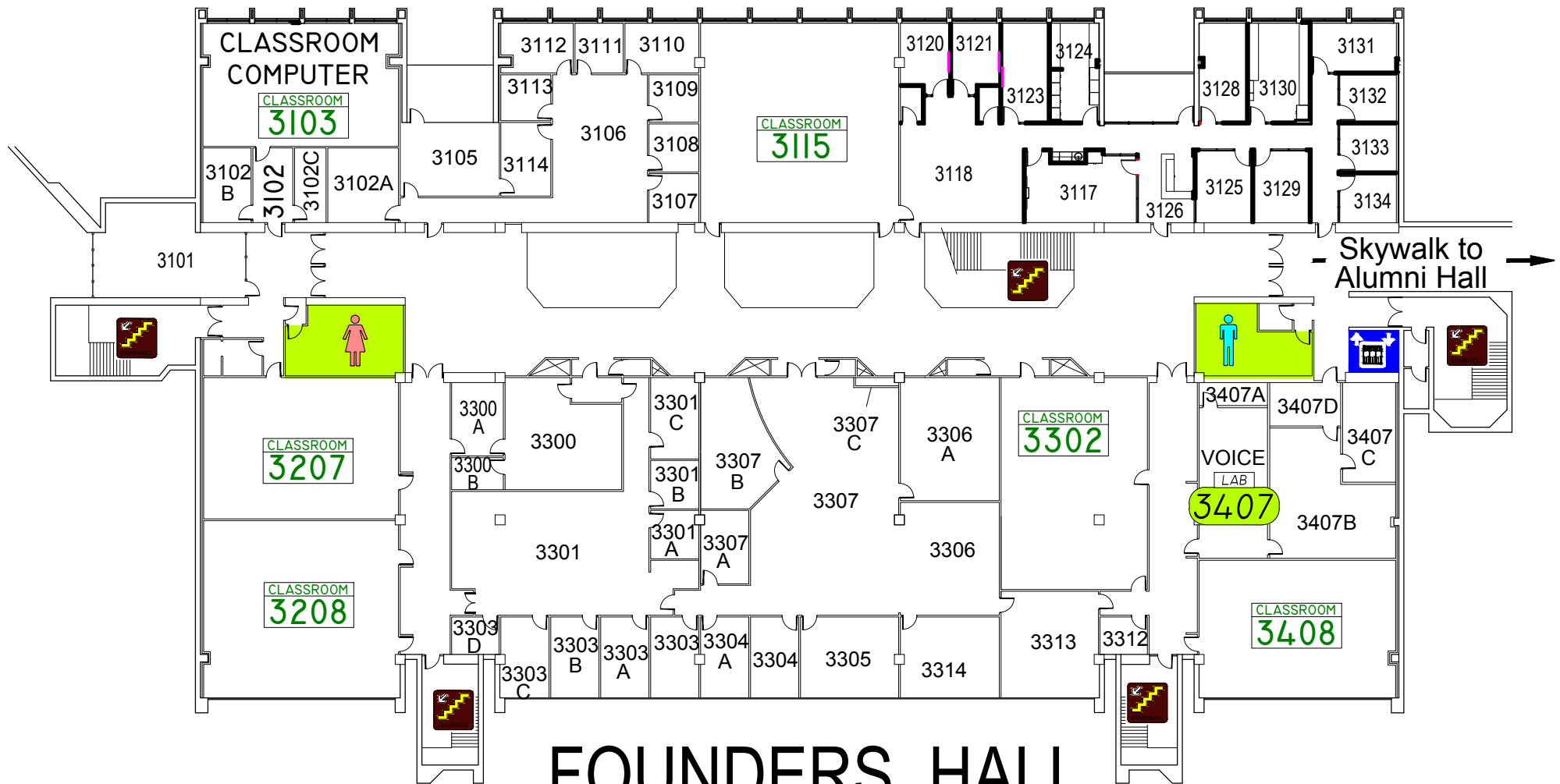




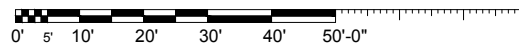
# EMERGENCY STORM SHELTERS

In event of a Tornado Warning everyone should go to a Lower Level **Primary Storm Shelter**

In event you can not get to a Primary Shelter go to a **Secondary Storm Shelter**



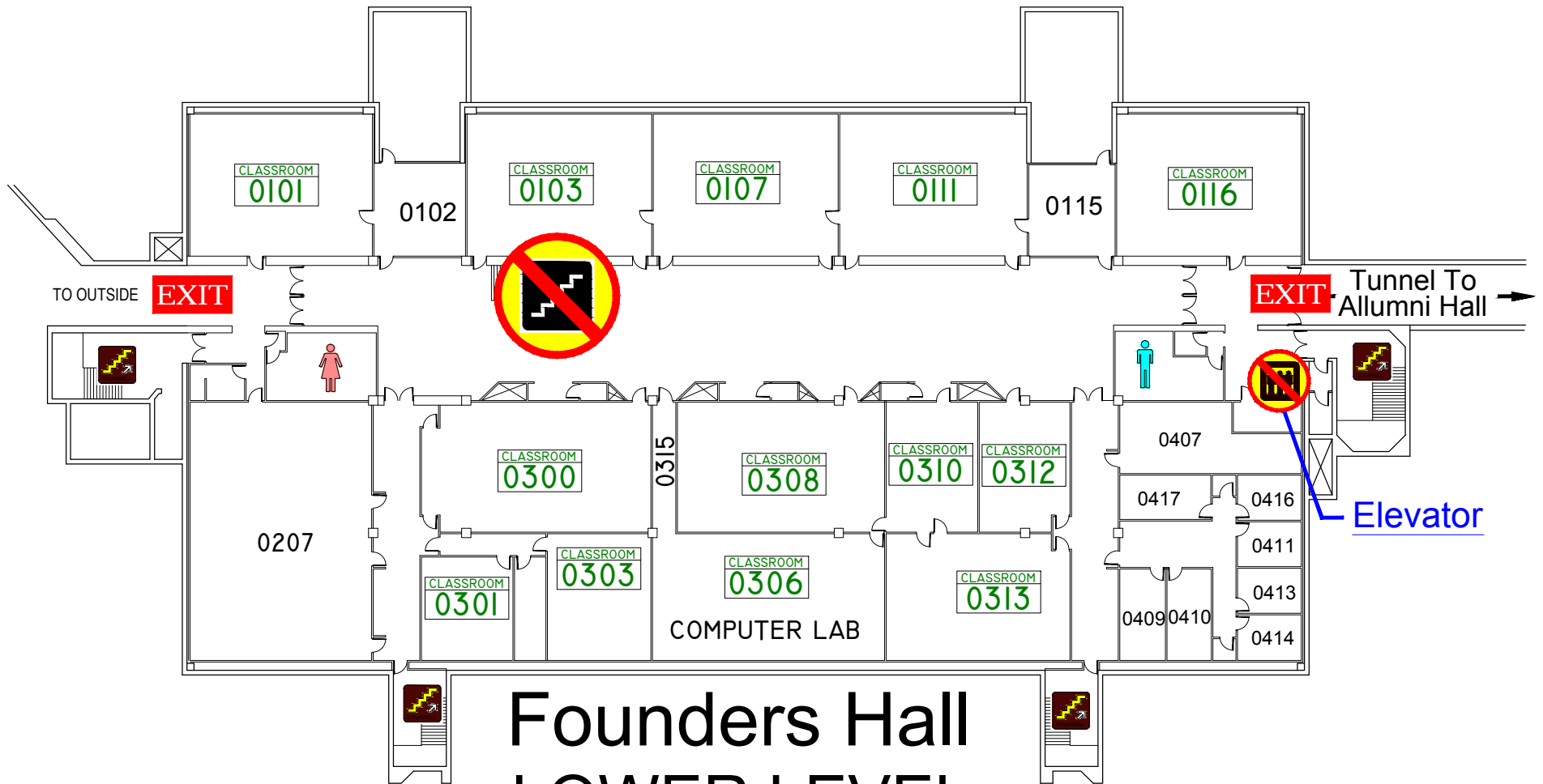
FOUNDERS HALL  
3rd FLOOR



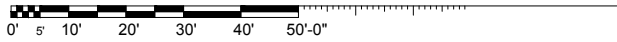
# EMERGENCY EXIT PLAN

**EXIT** IN CASE OF EMERGENCY USE MARKED EXITS **EXIT**

 DO NOT USE OPEN STAIRS OR ELEVATORS 



## Founders Hall LOWER LEVEL



# EMERGENCY EXIT PLAN

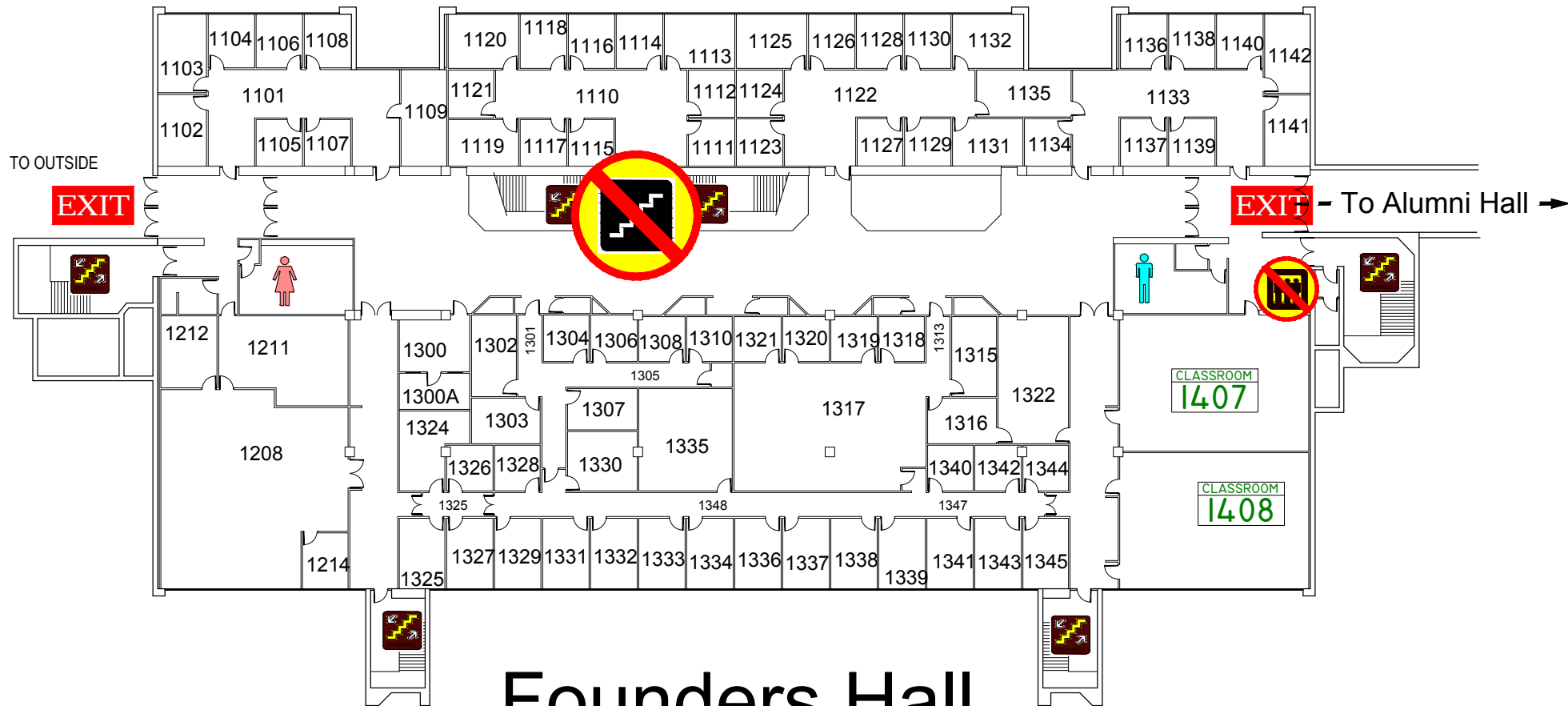
**EXIT**

IN CASE OF EMERGENCY USE MARKED EXITS

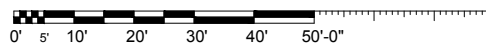
**EXIT**



DO NOT USE OPEN STAIRS OR ELEVATORS



## Founders Hall 1st FLOOR

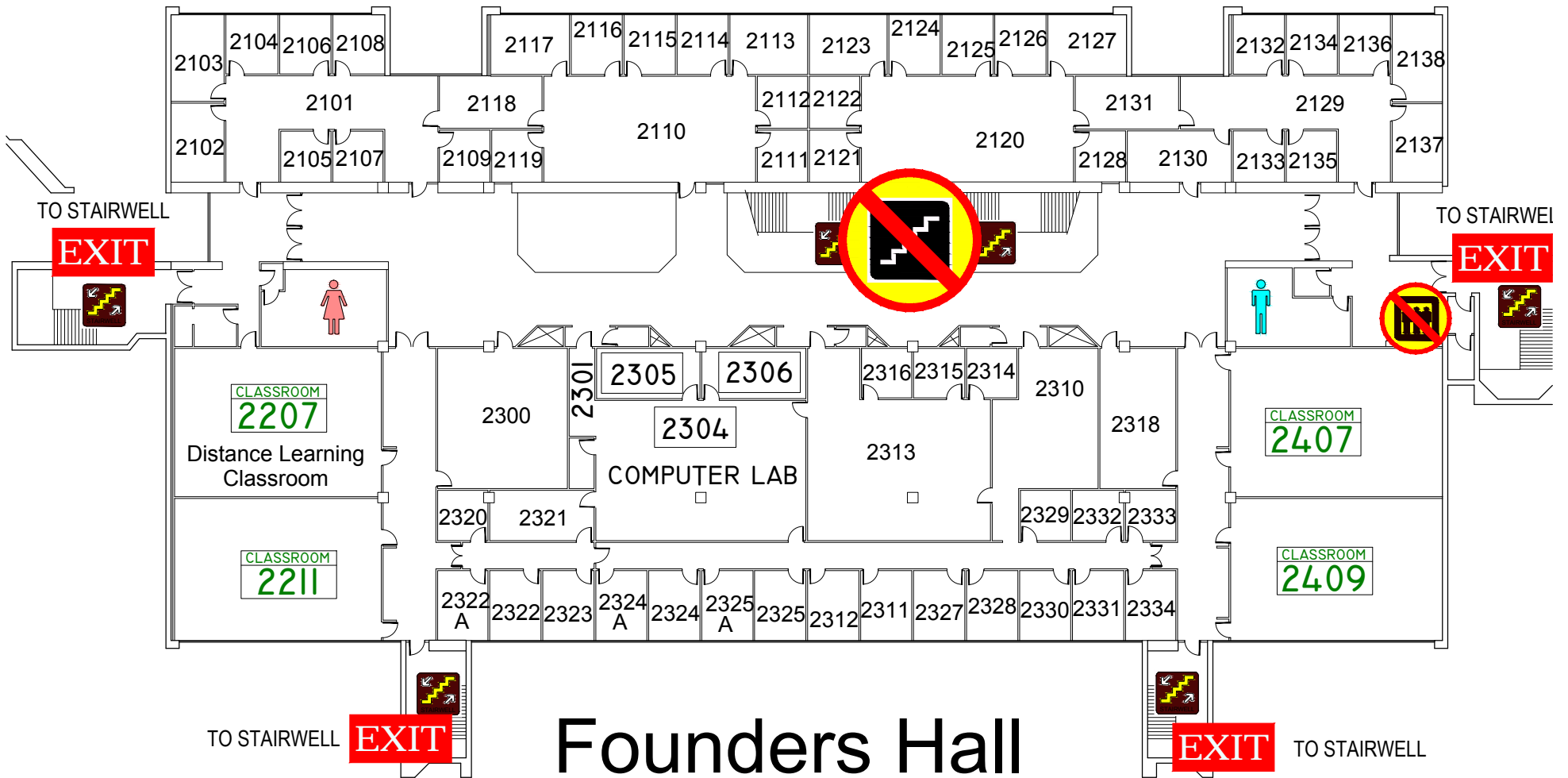


# EMERGENCY EXIT PLAN

**EXIT** IN CASE OF EMERGENCY USE MARKED EXITS **EXIT**

 DO NOT USE OPEN STAIRS OR ELEVATORS 

 WHEELCHAIR USERS ARE TO GO INTO   
STAIR WELLS **EXIT** AND WAIT FOR EMERGENCY PERSONNEL.



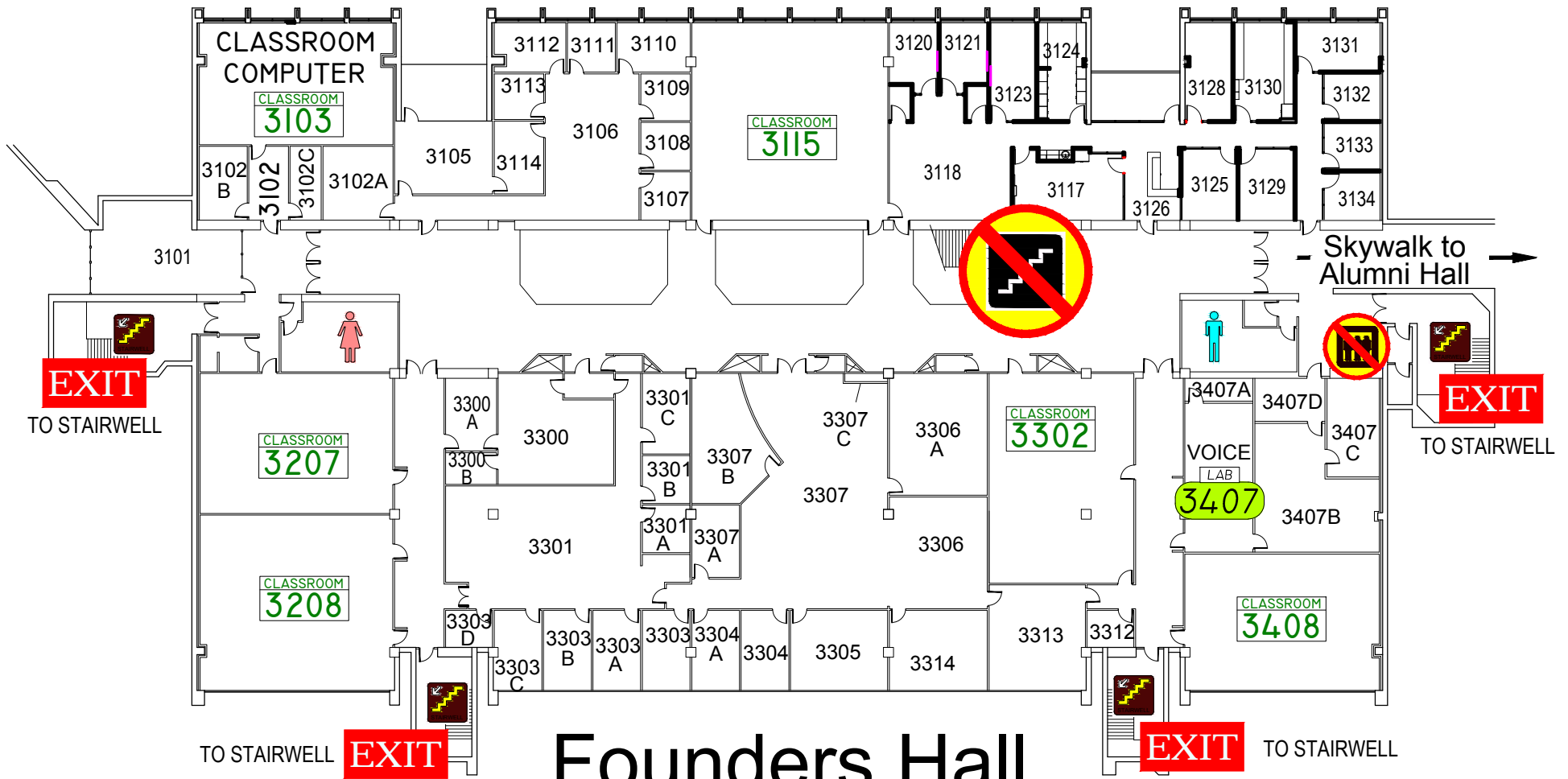
Founders Hall  
2nd FLOOR

# EMERGENCY EXIT PLAN

**EXIT** IN CASE OF EMERGENCY USE MARKED EXITS **EXIT**

 DO NOT USE OPEN STAIRS OR ELEVATORS 

 WHEELCHAIR USERS ARE TO GO INTO   
STAIR WELLS **EXIT** AND WAIT FOR EMERGENCY PERSONNEL.



Founders Hall  
3rd FLOOR