

CONFERENCE AT A GLANCE

# Pathways to Progress



The Southern Illinois Professional Development  
Center

*The 28<sup>th</sup> Annual  
Southern Illinois Fall Conference*

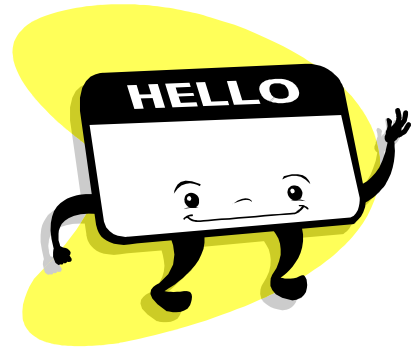
November 4-5, 2009  
Hilton Garden Inn,  
The Regency Conference Center  
O'Fallon, IL

***WEDNESDAY, NOVEMBER 4, 2009***

**REGISTRATION**

**12:30 pm**

**Lobby**



## **Afternoon Session**

**1:00 pm – 4:00 pm**

**“ABCs of Career Clusters/Career Clusters 101”**

*Doug Kueker*  
*States' Career Clusters*

This introductory session is to learn the basics of the Career Clusters model, components, and implementation strategies. Designed for first-time participants and those becoming familiar with Career Clusters, this will give completers the basic knowledge needed to get started using Career Clusters.

***THURSDAY, NOVEMBER 5, 2009***



**REGISTRATION**

**7:45 am – Noon**

**Lobby**

**CONTINENTAL  
BREAKFAST**

**7:45 am – 8:45 am**



**EXHIBITS OPEN**



**7:45 am – 5:00 pm**

***THURSDAY, NOVEMBER 5, 2009***

**Moderators Needed!**

**Moderators** introduce sessions and collect evaluations. Call Pat (618-650-2254) or email her ([pwellen@siue.edu](mailto:pwellen@siue.edu)) if you can help. Thank you.

**This year's conference will provide a total of 9 hours of professional development. Certificates of attendance will be available at the registration table.**

**AS IN YEARS PAST,**

CPDUs will be available for the entire conference. Be sure to look for the sign-up sheets at the sessions you attend!!!

**Visit us on the web:  
<http://www.siue.edu/SIPDC>**

The following presentation schedule for this year's conference is  
***SUBJECT TO CHANGE***

# THURSDAY, NOVEMBER 5, 2009

## ***Session I – (8:45 am – 9:45 am)***

### **Approaches to Recruitment for ESL Learners**

*Nelson Aguiar - Illinois Community College Board, Springfield, IL*

*Intended Audience: ESL & Admin*

Start or expand your ESL program. Learn recruitment strategies, where to find ESL learners, how to advertise, ways to effectively serve and capture performance funds for long-term program benefits.

### **COME ON DOWN! Game Time in Math**

*Curt Phelps - Macon-Piatt Adult Education Center, Decatur, IL*

**Sponsored by IACEA**

*Intended Audience: GED®*

Need something fresh and new for math class? Need a way to capture students' attention and teach necessary math concepts at the same time? This session is for you. Time will be spent on how to bring TV game shows into your math class. The presentation will include examples of how it can be done and the group will play some of the games.

### **Test your DAISI Know-How: Challenges for the DAISI User.**

*Jay Brooks - Illinois Community College Board, Herrin, IL*

*Intended Audience: Technology & Support Staff*

So you've been asked to explain some DAISI data or create a special report. Come to this

## ***Session I – (continued)***

session to test your ability (and pick up tips and tricks) to solve common (or not so common) DAISI dilemmas faced in adult education programs everyday. Be sure to bring your own dilemmas or DAISI stumpers to the session. (TO FULLY PARTICIPATE IN THIS SESSION, BRING YOUR DAISI LOGIN AND PASSWORD.)

### **Career Cluster Tools**

*Doug Kueker - States' Career Clusters, Lincoln, NE*

**Sponsored by Steck-Vaughn**

*Intended Audience: GED/Transition*

Use this session to check out the tools available from Career Clusters. Guides, manuals, brochures, plans of study, free Web site resources, and other tools will be available to try out. Walk away with ideas for using the tools at your site.

### **Don't be Fooled, Acquire the Tools – FL2010**

*Rob Mehan - Illinois Securities Department, Springfield, IL*

*Intended Audience: Global*

Understanding how finances work will greatly affect your life. This session will give you tools to help educate your students about the importance of finances. Financial Literacy 2010 is a curriculum that can be incorporated into many classes such as consumer education, economics, mathematics and government. Help students, regardless of age, develop good financial habits that will carry them through their adult lives.

# THURSDAY, NOVEMBER 5, 2009 (continued)

## Grand Opening of Exhibits

9:45-10:05 am

## Session 2 – (10:05 am – 11:05 am)

### **Every Cent Counts**

*Mike Hughes – Illinois Attorney General's Office, Springfield, IL*

*Intended Audience: Global*

In today's economy, every cent counts. Understanding your rights and options as a consumer is the key to making the most of your dollar and safeguarding your financial future. The Illinois Attorney General's office created the "Every Cent Counts" booklet to help Illinoisans develop that understanding. In the booklet you will find information about dealing with debt collectors, avoiding foreclosure, protecting your credit history, staying away from costly payday loans, and more.

### **Personality Disorders – a General Overview**

*Scott M. Comrie – Alton Mental Health Center, Alton, IL*

*Intended Audience: ABE, SLN, GED*

A review of Personality Disorders as described in the DSM IV. Also a review of several clinical intervention and interaction suggestions potentially helpful when working with these individuals. Meant as a general overview of these disorders.



## Session 2 – (continued)

### **Reach your GED-i Audience**

*Crystal Hack – GED-i, Macomb, IL*

*Intended Audience: GED® & Technology*

Explore strategies to build an online presence to attract GED-i learners to your program. Discover field tested ideas that you can implement immediately when you get back to your office. During this session, there will be time to discuss ideas and plan GED-i marketing strategies.

### **Introduction to the National Center Cluster Knowledge and Skill Statements**

*Doug Kueker - States' Career Clusters, Lincoln, NE*

**Sponsored by McGraw-Hill/Contemporary**

*Intended Audience: GED/Transition*

The Career Cluster Knowledge and Skill Statements can be used to guide and support curriculum revision efforts. The statements are maintained by national advisory committees and were revised in 2008. Take away ideas for use in your programs.

### **The Three A's of "A School"**

*Ginger McBride - Shawnee Community College, Ullin, IL*

*Intended Audience: Alternative Education*

This presentation will focus on how our Alternative High School is structured and why it has been such a success. We will cover the three A's – Attendance, Academics, and Attitude. Best practices as well as lessons learned will be discussed.

## THURSDAY, NOVEMBER 5, 2009 (continued)

### ***Session 3 – (11:15 pm -12:15 pm)***

#### **Using GED® Accommodations to Successfully Transition Students to a GED Completer**

*Jennifer Foster – Illinois Community College Board, Springfield, IL*

*Intended Audience: GED, Admin, & SLN*

What are GED Testing accommodations? How do I know if a student qualifies for GED Testing accommodations? When do students need to apply for accommodations and how long does it take for approval? This session will provide answers to these questions and the latest information available regarding GED Testing.

#### **What's the Problem?**

*Todd Evans – ProLiteracy, St. Louis, MO*

*Intended Audience: ESL, Fam Lit, Workforce, Alt Ed & ABE*

Learn the questioning techniques at the heart of the problem-posing methodology. See how this approach creates robust lessons in which students communicate with purpose, think critically, and apply newly acquired knowledge and language skills to solve problems relevant to their everyday lives. Examples will be drawn from a variety of published materials.

#### **The Use of WorkKeys is Growing in Education and Work Place**

*Cyndie Garcia – Madison County Career & Technical Education System, Edwardsville, IL*

*Intended Audience: GED/Transition, ABE, Admin, Alt Ed, DOC & Workforce*

Join me in a lively discussion of how WorkKeys is growing in the education systems and in the

### ***Session 3 –(continued)***

work place. Leave this session with not only a foundation on WorkKeys but also a strategy or two that can be tailored to assist you in implementing.

#### **Basic Gang Awareness 101**

*Detective Kristopher Thorp – Madison County Sheriff's Office, Edwardsville, IL*

*Intended Audience: Global*

The goal of this presentation is to develop a basic understanding and overall awareness of regional gang culture and trends. An overview of common symbols, hand signs, and graffiti will be provided.

#### **Smart Women and Money**

*Kristen Zueck – Illinois State Treasurer's Office, Springfield, IL*

*Intended Audience: Global*

This presentation will examine some of the myths about money; provide facts about why women need to take charge of their money; and then discuss important steps that women can take to seize control of their finances.

## LUNCH

Will be served from  
12:15 pm to 1:15 pm



## THURSDAY, NOVEMBER 5, 2009 (continued)

### Session 4 – (1:25 pm – 2:25 pm)

#### **Find a Path...or Make One!**

*Linda Sargent – John A. Logan College,  
Carterville, IL*

*Intended Audience: Global*

A session that will enable you to cope with the changes of life. When life gives you lemons...throw them away and go buy some chocolate! It isn't about how many times you get knocked down...it's about how many times you get back up! Join us as we learn how to keep going in spite of what is happening around us.

#### **Developing Partnerships/Collaborations**

*James Darden – Shawnee Community  
College, Ullin, IL*

*Intended Audience: Admin, Workforce, & ABE*

Who, What, When and Where. This session will focus on how to go about developing partnerships and collaborations with local businesses, agencies, and colleges by using what is available to maximize funds and efforts, and effective ways to build pathways to education and careers.

#### **Building the Transition Plan**

*Crystal Hack – GED-i, Macomb, IL*

*Intended Audience: GED® & Workforce*

With over 70% of the fastest-growing jobs requiring certificates and advanced degrees, the GED is the beginning of a career and college pathway for many students. Developing a clear transition plan at the program and classroom level will enable learners to achieve their goals. Join this interactive session to learn strategies applicable to both online and traditional classroom learners, discover online resources, and review a GED-i Transitions Guide. You will walk away with ready to implement ideas.

### Session 4 –( continued)

#### **Problem-Based Learning Instruction Career Cluster**

*Dawn Hughes – Central Illinois Adult  
Education Service Center, Macomb, IL)*

*Intended Audience: GED/Transition*

#### **Direct, Explicit Reading Instruction using KWL-PLUS**

*Linda Cox – Southern Illinois  
Professional Development Center,  
Edwardsville, IL*

*Intended Audience: ABE, Fam Lit, Alt. Ed, DOC,  
& GED*

KWL-PLUS is a simple (and FREE!) evidence-based reading instructional strategy that can be used to 1) deliver direct and explicit reading instruction to help your students develop comprehension skills; 2) provide opportunities for students to practice purposeful reading, reflection, and questioning; 3) act as a springboard to encourage further discussion and additional research into a specific topic, both of which are important skills for successful transitioning to post-secondary education

Break 2:25 pm – 2:45 pm



## THURSDAY, NOVEMBER 5, 2009 (continued)

### ***Session 5 – (2:45 pm – 3:45 pm)***

#### **Career Cluster Programs of Study in the Adult Education Classroom**

*Lynn Reha – Illinois Center for Specialized Professional Support, Normal, IL*

*Aime'e Julian - Illinois Center for Specialized Professional Support, Normal, IL*

*Intended Audience: GED/Transition, ABE, ESL, & Workforce*

This workshop will outline the benefits to the student of Career Clusters Programs of Study. The presenters will suggest strategies for the Adult Education instructor to help make those benefits available by way of the Adult Education classroom and program.

#### **Math Review Smart Packs**

*Karen Schneider – Southwestern Illinois College, Belleville, IL*

*Intended Audience: GED*

The presentation will offer materials and ideas for classroom review prior to testing. It covers concepts determined as problem areas for students taking the GED® Tests.

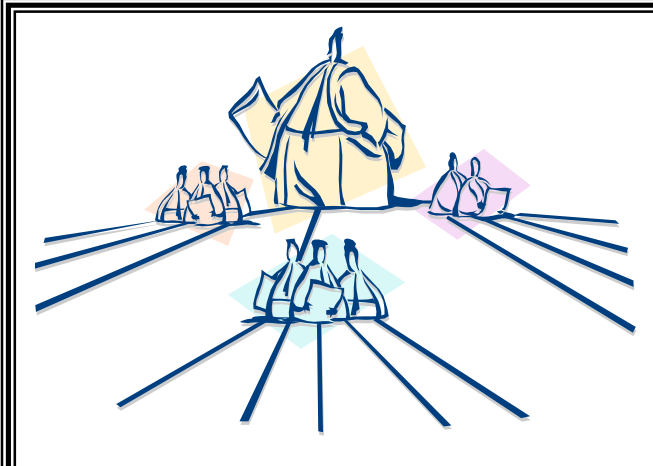
#### **Online Resources for ABE & ASE Classroom Teachers**

*Todd Jorns – Illinois Community College Board – Springfield, IL*

*Intended Audience: ABE, Alt Ed., & GED*

Are you looking for some new and interactive teaching resources? Then stop by and learn more about FREE online resources for teachers

to use in the classroom. Attendees will be guided to various online teaching resources and have time to experience and evaluate the web resources.



**Administrators' Meeting**  
*Illinois Community College Board,  
Springfield, IL*

***This is a double session.***  
***2:45 pm – 5:00 pm***

#### **Developing a Plan of Operation that Gets Money & Results**

*Beth Paoli – Secretary of State Illinois State Library System, Springfield, IL*  
*Sharon Colombo – John A. Logan College, Carterville, IL*

*Intended Audience: ABE, Fam Lit, Admin, ESL, & Workforce*

This interactive session will focus on designing an effective Plan of Operation to guide you in meeting your goals and measuring progress in a meaningful and effective manner. Participants will receive assistance in developing personalized outcome statements, activities and evaluation. This session is applicable to SOS as well as other grants.

# THURSDAY, NOVEMBER 5, 2009

## ***Session 6 – (4:00 pm – 5:00 pm)***

### **TNT – Tools and Techniques for Strengthening Student Success**

*Pat Gallagher, Lincoln Land Community College, Springfield, IL*  
*Denise Smith Lincoln Land Community College, Springfield, IL*

*Intended Audience: ABE, SLN, GED*

Join us for an interactive session that will explode with strategies and techniques from an Intervention Toolbox. This toolbox includes activities for a variety of learning styles, levels and abilities.

### **Starting a Book Club: Successes and Pitfalls**

*Ann Clayton – Southwestern Illinois College, Cahokia Even Start Program*  
*Julie Ford -- Southwestern Illinois College, Cahokia Even Start Program*  
*Jennifer Kohnen -- Southwestern Illinois College, Cahokia Even Start Program*

*Intended Audience: Fam Lit, ABE, ESL*

Three years ago we started a book club with our Family Literacy ABE and ESL parents. There have been great moments and some not so great too. We will share our experiences and give some tips about working with a very diverse group of adults and how we learned from each other and shared our cultures and love of reading.

## ***Session 6– (continued)***

### **Transition to Green: Going Green in the Workforce**

*Rick Marshall – Lewis and Clark Community College, Godfrey, IL*

*Intended Audience: Global*

This presentation will provide an opportunity to discuss the present trends in the American Workforce that reflect a growing demand for workers with skills in *Green* technologies and *Green* construction methods and materials.

### **Writing Can Be Fun**

*Todd Evans ProLiteracy, St. Louis, MO*

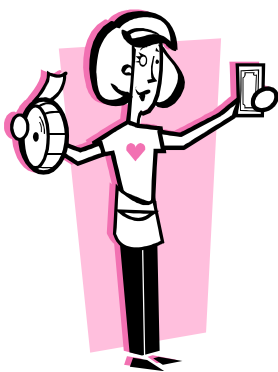
*Intended Audience: ABE, ESL, Att. Ed, & GED*

When students write, they reinforce their reading skills and can dramatically increase their reading gains. However, many students either don't like to write or are afraid of writing. Come and learn fun activities to get students to write. Activities are appropriate for ABE and ESL students at all language levels.

**THIS IS A DRAFT. ALL SESSIONS ARE SUBJECT TO CHANGE. ANY SESSION COULD BE MOVED TO ANOTHER TIME SLOT TO ACCOMADATE PRESENTERS.**

**CHECK THE WEBSITE  
[www.siu.edu/SIPDC](http://www.siu.edu/SIPDC)  
FOR UPDATES**

The goal of this year's conference is to provide an opportunity to learn new ideas to improve services to students in adult education classrooms. It is also our hope that this conference will motivate you in achieving your professional goals.



### **EXHIBITOR DRAWINGS**

**In the Ballroom  
5:00 pm  
Immediately following last  
session Thursday**

**MUST BE PRESENT TO WIN**

Please BYOB (Bring your own BAG) to this year's conference

- Help keep costs down
- Allow more participation
- Let's practice being green



## **NEW LOCATION**

**Conference Site**  
Hilton Garden Inn  
The Regency Conference Center  
400 Regency Park Drive  
O'Fallon, Illinois 62269  
Phone: 618-624-4499  
Fax: 618-624-6699

For additional information, contact Pat at 618-650-2254  
or email her at [pwellen@siue.edu](mailto:pwellen@siue.edu)

