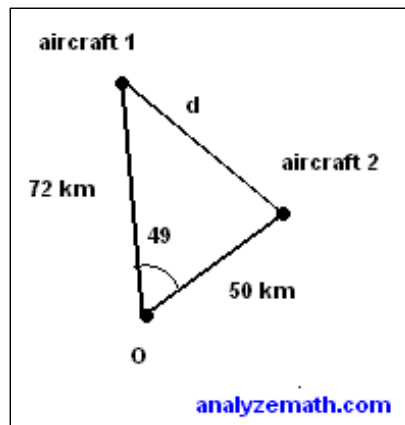


MATH. 125, QUIZ 13 - Section 6.2 (25points = 5% final grade)

You are allowed to use a calculator but you still have to show your work step by step (like in the book) not just write the final answer.

1. (5 points) Sides of a triangle are of length $10ft$, $5ft$, and $7ft$. Find the angle between the two longest sides.(round answers to 1 decimal place).

2. (7 points) An aircraft tracking station determines the distance from a common point O to each aircraft and the angle between the aircrafts. If angle O between the two aircraft is equal to 49° and the distances from point O to the two aircraft are 50 km and 72 km , find distance d between the two aircrafts.(round answers to 1 decimal place).



continue on *the next page*

3. (7 points) A triangle has sides equal to 4 m, 11 m and 8 m. Find its area (round answers to 1 decimal place).

4. (7 points) A ship leaves port at 1 pm traveling north at the speed of 30 miles/hour. At 3 pm, the ship adjusts its course 20 degrees eastward. How far is the ship from the port at 4pm? (round to the nearest unit).

Solution based on the Law of Cos: 89 miles.