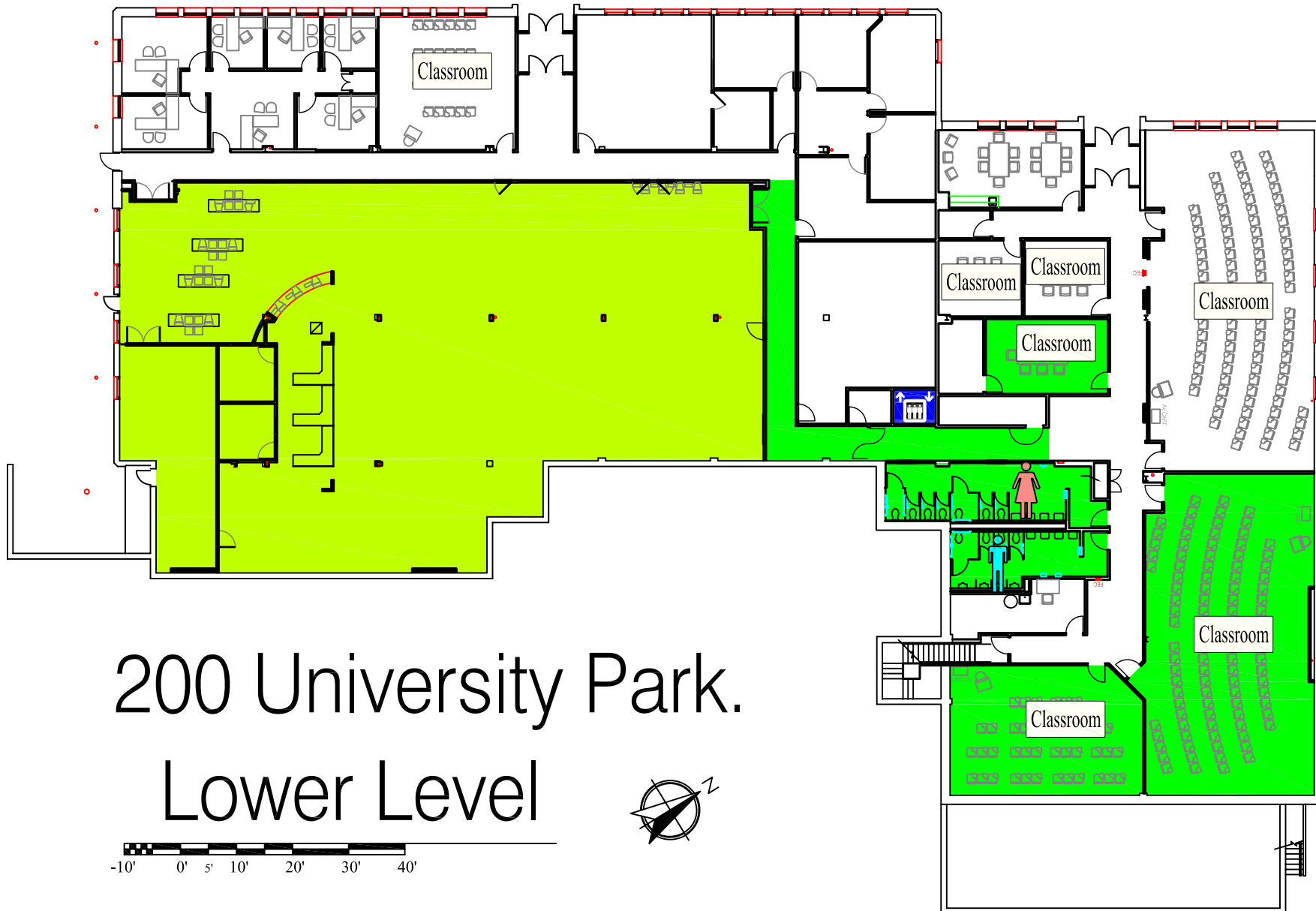


EMERGENCY STORM SHELTERS

In event of a Tornado Warning everyone should go to a Lower Level **PRIMARY SHELTER**

In event you can not get to a Primary Shelter go to a **SECONDARY STORM SHELTER**

located on 2nd floor



200 University Park.

Lower Level

-10' 0' 5' 10' 20' 30' 40'

